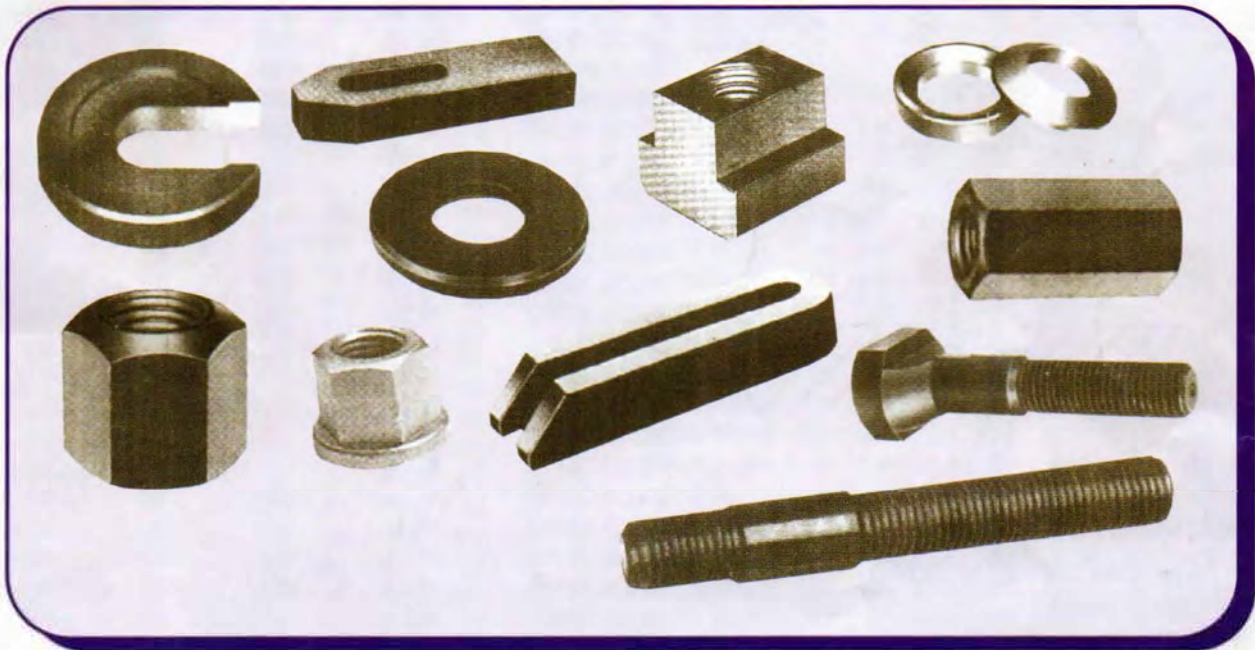


Gokul Traders



Associate of Laddha Group, Estd. 1932

CLAMPING ELEMENTS



INFORMATION ON STRENGTH OF THREADED PRODUCTS

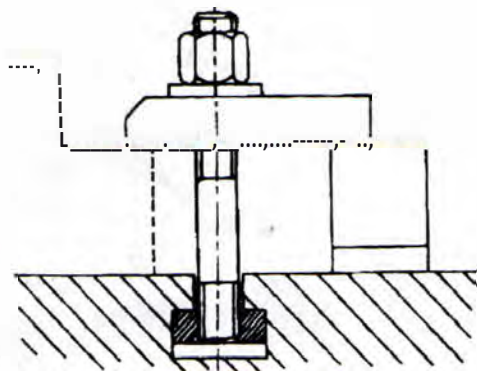
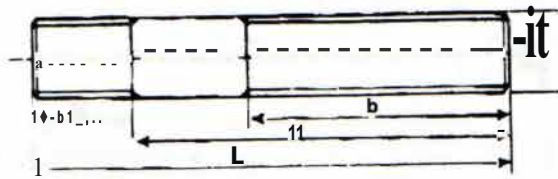
Thread	Strength Class	M8	M10	M12	M16	M20	M24	M30	
Pitch		1.25	1.50	1.75	2.00	2.50	3.00	3.50	
Nuts									
Hardness HRC	8.8	22-28							
T-bolts, Studs									
Hardness HRC	8.8	22-28					22-28		
	10.9	25-32							

E-mail : info@gokultraders.com

CLAMPING

CLAMPING STUD

IS 13178-1991



FEATURES / USES :

- Toughened En8, 22 to 28 HRC.
- Rolled threads.
- Finish - Blackodized.
- Used in jig-fixtures, hydraulic equipments as one of the clamping element

MODEL	d	b	b1	L
BECS 850	M 8	25	11	50
BECS 880	M 8	48	11	80
BECS 8100	M 8	63	11	100
BECS 8160	M 8	95	11	160
BECS 1050	M 10	25	13	50
BECS 1080	M 10	50	13	80
BECS 10100	M 10	63	13	100
BECS 10160	M 10	100	13	160
BECS 10200	M 10	125	13	200
BECS 1250	M 12	25	15	50
BECS 1265	M 12	35	15	65
BECS 1280	M 12	50	15	80
BECS 12100	M 12	63	15	100
BECS 12125	M 12	75	15	125
BECS 12160	M 12	100	15	160
BECS 12200	M 12	125	15	200
BECS 12250	M 12	160	15	150
BECS 12315	M 12	180	15	315
BECS 1665	M 16	40	19	65
BECS 1680	M 16	50	19	80
BECS 16100	M 16	63	19	100
BECS 16125	M 16	75	19	125
BECS 16160	M 16	100	19	160
BECS 16200	M 16	125	19	200
BECS 16250	M 16	160	19	250
BECS 16315	M 16	180	19	315
BECS 2080	M 20	32	27	80
BECS 20100	M 20	45	27	100
BECS 20125	M 20	75	27	125
BECS 20160	M 20	100	27	160
BECS 20200	M 20	125	27	200
BECS 20250	M 20	160	27	250
BECS 20315	M 20	190	27	315
BECS 20400	M 20	250	27	400
BECS 20500	M 20	250	27	500
BECS 24100	M 24	45	35	100
BECS 24125	M 24	45	35	125
BECS 24160	M 24	100	35	160
BECS 24200	M 24	125	35	200
BECS 24250	M 24	160	35	250
BECS 24315	M 24	200	35	315
BECS 24400	M 24	250	35	400
BECS 24500	M 24	250	35	502
BECS 30 x 160	M 30	100	43	160
BECS 30 x 200	M 30	125	43	200
BECS 30 x 250	M 30	160	43	250

DIN 6330-1991

e
I-A

L
D
r
Ls·J

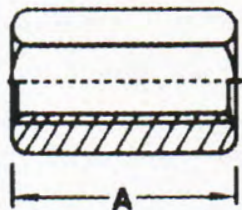


MODEL	D	A	S
BEHN 812	M8	12	13
BEHN 1015	M10	15	17
BEHN 1218	M12	18	19
BEHN 1624	M16	24	24
BEHN 2030	M20	30	30
BEHN 2436	M24	36	36
BEHN 3045	M30	45	45

FEATURES/ USES : C45 Heat treated to 22 to 28 HRC
Finish - Blackodized used in Jig fixtures,
hydraulic equipment

CLAMPING

EXTENSION NUT



MODEL	D	A	S
BEEN 824	M8	24	13
BEEN 1030	M10	30	17
BEEN 1236	M12	36	19
BEEN 1648	M16	48	24
BEEN 2060	M20	60	30
BEEN 2472	M24	72	36
BEEN 3090	M30	90	45

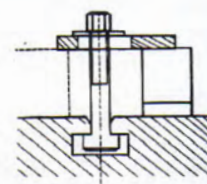
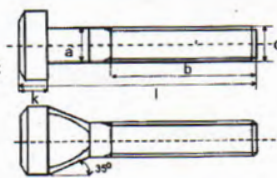
FEATURES / USES : En8 Heat treated to 22 to 28 HRC To couple the stud for the purpose of increasing the length.

T-BOLT FORGED HEAD

IS2014-1996/DIN 787 1991

FEATURES / USES :

- EN8 heat treatment to 22 to 28 HRC
- Finish - Blackodized
- rolled Threads
- Used for machines having 'T' slot's

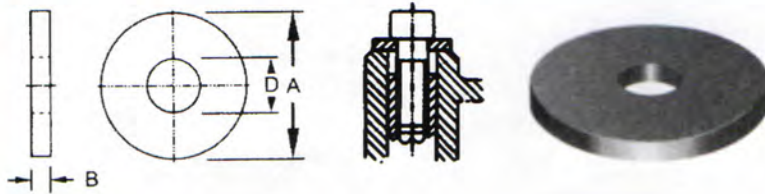


MODEL No. T SLOT	size	l	a	b	d	e	e1	k	MODEL No. T SLOT	size	l	a	b	d	e	e1	k
BETB 1050	10	50	9.6	30	M10	15	19	6	BETB 1880	18	80	17.6	55	M16	28	36	10
BETB 1065	10	65	9.6	45	M10	15	19	6	BETB 18100	18	100	17.6	65	M16	28	36	10
BETB 1080	10	80	9.6	50	M10	15	19	6	BETB 18125	18	125	17.6	65	M16	28	36	10
BETB 10100	10	100	9.6	60	M10	15	19	6	BETB 18160	18	160	17.6	100	M16	28	36	10
BETB 1250	12	50	11.6	35	M12	18	25	7	BETB 18200	18	200	17.6	125	M16	28	36	10
BETB 1265	12	65	11.6	40	M12	18	25	7	BETB 18250	18	250	17.6	150	M16	28	36	10
BETB 1280	12	80	11.6	55	M12	18	25	7	BETB 18315	18	315	17.6	180	M16	28	36	10
BETB 12100	12	100	11.6	65	M12	18	25	7	BETB 2080	20	80	19.6	55	M20	32	40	12
BETB 12125	12	125	11.6	75	M12	18	25	7	BETB 20100	20	100	19.6	65	M20	32	40	12
BETB 12160	12	160	11.6	80	M12	18	25	7	BETB 20125	20	125	19.6	85	M20	32	40	12
BETB 12200	12	200	11.6	120	M12	18	25	7	BETB 20160	20	160	19.6	110	M20	32	40	12
BETB 12250	12	250	11.6	150	M12	18	25	7	BETB 20200	20	200	19.6	125	M20	32	40	12
BETB 12315	12	315	11.6	180	M12	18	25	7	BETB 20250	20	250	19.6	150	M20	32	40	12
BETB 1450	14	50	13.6	35	M12	22	28	8	BETB 20315	20	315	19.6	190	M20	32	40	12
BETB 1465	14	65	13.6	40	M12	22	28	8	BETB 2280	22	80	21.6	55	M20	35	45	14
BETB 1480	14	80	13.6	55	M12	22	28	8	BETB 22100	22	100	21.6	60	M20	35	45	14
BETB 14100	14	100	13.6	65	M12	22	28	8	BETB 22125	22	125	21.6	85	M20	35	45	14
BETB 14125	14	125	13.6	75	M12	22	28	8	BETB 22160	22	160	21.6	100	M20	35	45	14
BETB 14160	14	160	13.6	80	M12	22	28	8	BETB 22200	22	200	21.6	125	M20	35	45	14
BETB 14200	14	200	13.6	120	M12	22	28	8	BETB 22250	22	250	21.6	150	M20	35	45	14
BETB 14250	14	250	13.6	150	M12	22	28	8	BETB 22315	22	315	21.6	190	M20	35	45	14
BETB 1665	16	65	15.6	45	M16	25	32	9	BETB 24100	24	100	23.6	70	M24	40	50	16
BETB 1680	16	80	15.6	55	M16	25	32	9	BETB 24125	24	125	23.6	85	M24	40	50	16
BETB 16100	16	100	15.6	65	M16	25	32	9	BETB 24160	24	160	23.6	110	M24	40	50	16
BETB 16125	16	125	15.6	80	M16	25	32	9	BETB 24200	24	200	23.6	125	M24	40	50	16
BETB 16160	16	160	15.6	100	M16	25	32	9	BETB 24250	24	250	23.6	150	M24	40	50	16
BETB 16200	16	200	15.6	100	M16	25	32	9	BETB 24315	24	315	23.6	190	M24	40	50	16
BETB 16250	16	250	15.6	150	M16	25	32	9	BETB 28100	28	100	27.6	70	M24	44	56	18
BETB 16315	16	315	15.6	180	M16	25	32	9	BETB 28125	28	125	27.6	75	M24	44	56	18
BETB 1865	18	65	17.6	45	M16	28	36	10	BETB 28160	28	160	27.6	110	M24	44	56	18
									BETB 28200	28	200	27.6	125	M24	44	56	18
									BETB 28250	28	250	27.6	150	M24	44	56	18
									BETB 28315	28	315	27.6	160	M24	44	56	18
									BETB 28400	28	400	27.6	250	M24	44	56	18



CLAMPING

PLAIN WASHER DIN 6340-1987



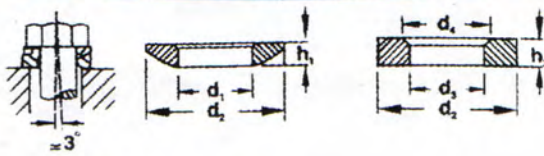
MODEL	A	D	B
BEPW 6	16	6.5	4
BEPW 8	23	8.4	4
BEPW 10	28	10.5	4
BEPW 12	35	13	5
BEPW 16	45	17	6
BEPW 20	50	21	6
BEPW 24	60	25	8
BEPW 30	68	31	10

FEATURES / USES :

- Toughened Cn8 to 22 to 30 HRC
- Finish-Blackodized
- Widely used in most of the clamping system.

SPHERICAL WASHER WITH CONICAL SEAT

IS4297-1996 TYPE A/D IN6319-1991

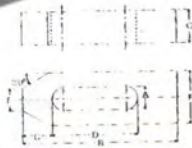


MATERIAL :

- En8, heat treated 22 to 30 HRC
- Blackodized

MODEL No. Bolts	For	d1	d2	h1	d3	d4	h2
BESWCS 8	M 8	8.4	17	3.2	9.6	14.5	3.5
BESWCS 10	M 10	10.5	21	4.0	12	18.5	4.2
BESWCS 12	M 12	13	24	4.6	14.2	20	5.0
BESWCS 16	M 16	17	30	5.3	19	26	6.2
BESWCS 20	M 20	21	36	6.3	23.2	31	7.5
BESWCS 24	M 24	25	44	8.2	28	37	9.5

STRAP CLAMP IS4292-1984



FEATURES / USES :

- En8, 22 to 30 HRC.
- Blackodized finish.
- Used on machine for clamping work pieces.

MODEL No.	For BOLTS	A	B	C	D	E	F	G
BESC 860	M 8	9	60	13	22	10	25	12
BESC 1080	M 10	11	80	15	30	12	30	16
BESC 12100	M 12	14	100	21	40	14	40	20
BESC 12125	M 12	14	125	21	50	14	40	20
BESC 16125	M 16	18	125	26	45	18	50	25
BESC 16160	M 16	18	160	26	65	18	50	25
BESC 20160	M 20	22	160	30	60	22	60	30
BESC 20200	M 20	22	200	30	80	22	60	30
BESC 24200	M 24	26	200	30	80	26	70	40
BESC 24250	M 24	26	250	35	105	26	70	40

MODEL	For BOLT OF	A	B	C	D	E	F
BEOESC 880	M8	9	80	15	8	4	25
BEOESC 10100	M 10	11	100	20	10	5	31
BEOESC 12125	M 12	14	125	25	12	6	38
BEOESC 12160	M 12	14	160	25	12	6	38
BEOESC 12200	M 12	14	220	25	12	6	38
BEOESC 16160	M 16	18	160	30	16	8	50
BEOESC 16200	M 16	18	200	30	16	8	50
BEOESC 16250	M 16	18	250	30	16	8	50
BEOESC 20200	M 20	22	200	40	20	10	62
BEOESC 20250	M 20	22	250	40	20	10	62
BEOESC 20315	M 20	22	315	40	20	10	62
BEOESC 24200	M 24	26	200	40	20	10	66
BEOESC 24250	M 24	26	250	40	20	10	66
BEOESC 24315	M 24	26	315	40	20	10	66

APPLICATION : Widely used for repetitive clamping applications frequent insertion & removal of part being clamped.

OPEN-ENDED STRAP CLAMP - IS-4293-1984



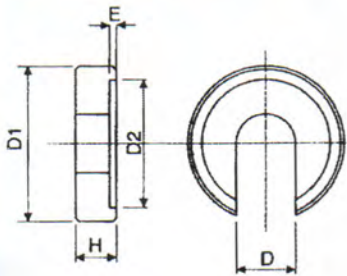
FEATURES / USES :

- En8 22 to 28 HRC. Blackodized finish.

CLAMPING

C-WASHER

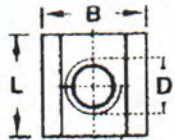
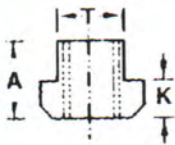
IS 4291 : 1996/DIN 6372-1972



MODEL No.	For BOLTS of	D1	D	H	D2	E
BECW 8	M8	28	8.4	7	21	1
BECW 10	M 10	34	10.5	8	25	1.2
BECW 12	M 12	40	13	9	30	1.8
BECW 16	M 16	56	17	12	37	1.8
BECW 20	M 20	64	21	14	45	2
BECW 24	M 24	75	25	16	52	2
BECW 30	M 30	90	31	18	65	2

FEATURES / USES : Steel heat treated Blackkodized finish.
-In the construction of fixtures having special application as spacer or clamping element because it could be swung out of the way and the part can be inserted or removed quickly.

TNUT IS - 2015-1977



FEATURES / USES :

- En8 heat treated to 22 to 28 HRC
- Blackodized / Zinc Plated Finish

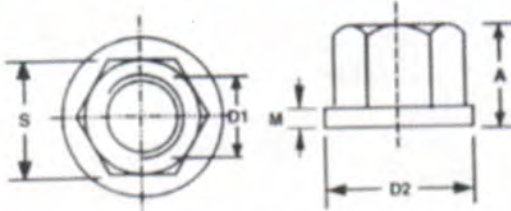
APPLICATION :

- Useful for the machines having 'T' slot, jig-fixures.
- Hydraulic elements, assorted setting elements and adopters. As illustrated.

MODEL No.	T	D	A	K	B	L
BETN 86	8	M 6	10	6	13	13
BETN 108	10	M 8	12	6	15	15
BETN 1210	12	M 10	14	7	18	18
BETN 1412	14	M 12	16	8	22	22
BETN 1612	16	M 12	18	9	25	25
BETN 1816	18	M 16	20	10	28	28
BETN 2016	20	M 16	24	12	32	32
BETN 2220	22	M 20	28	14	35	35
BETN 2420	24	M 20	32	16	40	40
BETN 2824	28	M 24	36	18	44	44
BETN 3630	36	M 30	44	22	54	54
BETN 4236	42	M 36	52	26	65	65

FLANGE NUT

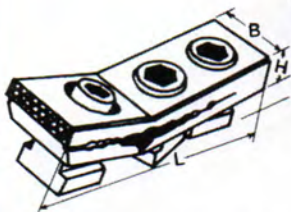
IS : 7795-1975 / DIN : 6331-1991



MODEL No.	D1	D2	M	A	S
BEFHN 812	M 8	18	3.5	12	13
BEFHN 1015	M 10	22	4	15	17
BEFHN 1218	M 12	25	4	18	19
BEFHN 1624	M 16	31	5	24	24
BEFHN 2030	M 20	37	6	30	30
BEFHN 2436	M 24	45	6	36	36
BEFHN 3045	M 30	58	8	45	46
BEFHN 3668	M 36	68	10	54	55

FEATURES / USES : ● Toughened En8, 22 to 28 HRC ● Finish-Blackodized ● Widely used in most of the clamping system.
● Process to be economical in comparison of hex nut & washer.

FLAT CLAMP



Product	T slot	L	B	H	Allen key	Approx. Pressure (kN)
BEFC M8	8	85	25	12	5	10 5
BEFC M10	10	85	25	12	6	10 5
BEFC M12	12	115	30	15	8	15 7.5
BEFC M14	14	115	30	15	10	15 7.5
BEFC M16	16	135	40	20	10	20 10
BEFC M18	18	135	40	20	10	20 10
BEFC M20	20	200	50	25	12	30 15
BEFC M22	22	200	50	25	16	30 15

FEATURES : ● Positive clamping of Flat job, Irrespective of the size. ● Low height and side Clamping, Leaving the entire top surface free for machining. ● Springs are provided for quick release of clamping force & jaw ● Due to low height it is suitable for clamping work piece with small contact area. ● Supplied with screw & T nuts of respective sizes.

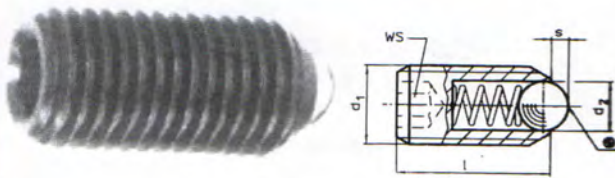
APPLICATION : For side holding of thick plates on milling shaping machine

MATERIAL : Hardened Steel.

FINISH : Black Oxidized.

CLAMPING

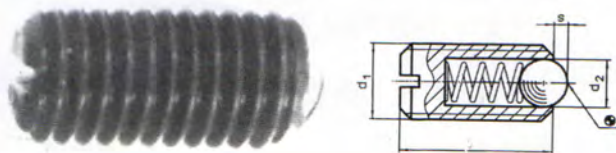
SPRING PLUNGER : Allen Type



Product	d1	d2	L	S	WS	Spring Load	
						F1	F2
BESP 512	M5	3	12	1.0	3	8	14
BESP 617	M6	3.2	17	1.0	3	11	18
BESP 820	M8	4.2	20	1.5	4	18	31
BESP 1025	M10	6.3	25	2.5	5	24	35
BESP 1228	M12	8.0	28	2.5	6	26	49
BESP M16	M16	9.5	35	3.5	8	41	86

APPLICATION : Used in jig fixture, Machine tools, Building, Welding Fixtures, Plastic Moulding Machine, These are required for wiper motor & limit Switches.

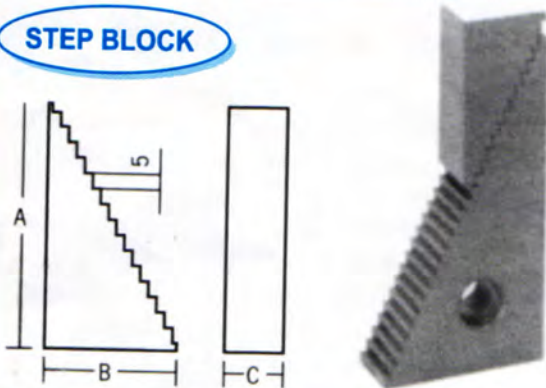
ALLAN TYPE : Body Steel Blackodised, Spring Stainless Steel, Ball Bearing Steel, Heardened.



SPRING PLUNGER : Slotted Type

Product	d1	d2	L	S
BESP 512	M5	3	12	1.0
BESP 614	M6	3.2	14	1.0
BESP 816	M8	4.5	16	1.5
BESP 1019	M10	6.3	19	2.0
BESP 1222	M12	8.0	22	2.5
BESP 1624	M16	9.5	24	3.5

STEP BLOCK



Product	Adjustable Height		C	A	B
	Min	Max			
BESB 50	22	50	30	33	24
BESB 100	38	107	30	66	40
BESB 210	69	208	30	131	73

FEATURES : Used to obtain required supporting heights.

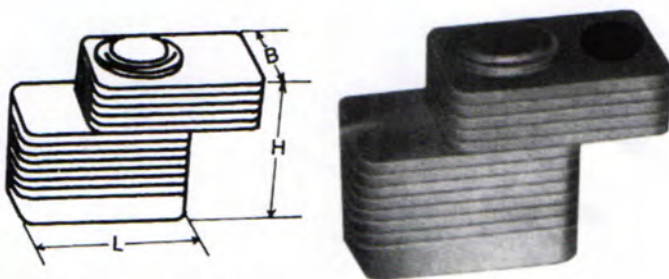
Any combination keeps the accurate parallelism.

APPLICATION : Used as a supporting block on any machine.

MATERIAL : S. G. Iron with high tensile strength.

FINISH : Powder coated

ADJUSTABLE HIGHT PLATE



Product	Single Plate Thickness	H	B	L
BEAHP 225	2	25	35	50
BEAHP 250	2	50	35	50
BEAHP 275	2	75	35	50
BEAHP 2100	2	100	50	60
BEAHP 2125	2	125	50	60
BEAHP 2150	2	150	50	60

FEATURES : Extra heigh could be achieved by stacking the blocks. Economical & save time in getting required spacers every time.

Compact safe & reliable system.

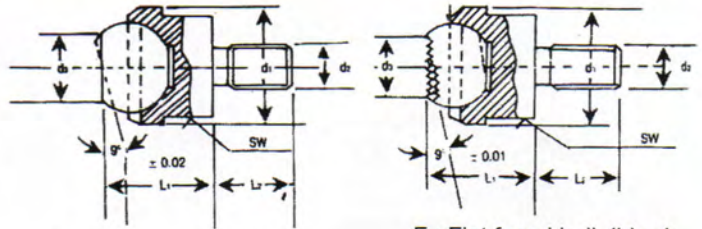
Used with or without exact heigh setter

MATERIAL : Mild Steel

FINISH : Blue Plating

CLAMPING

SALF ALIGNING PAD



C : Flat faced ball plain

F : Flat faced ball ribbed

Product Type C	Type F	d1	d2	d3	L1	L2	BallQ	A/F sw	Max Load Capacity
BESAP m6	BESAP m6	13	m6	7.2	13	8	10	11	10kg
BESAP m8	BESAP m8	13	m8	7.2	13	8	10	11	10kg
BESAP m10	BESAP m10	20	m10	10.5	18	10	16	17	25kg
BESAP m12	BESAP m12	20	m12	10.5	18	12	16	17	25kg
BESAP m16	BESAP m16	30	m16	20	27	16	25	27	90kg
BESAP m20	BESAP m20	50	m20	34.5	35	20	40	41	165kg

FEATURES : Useful for clamping the job from top to bottom.

The ball swivels and provides contact with no damage to surface.

APPLICATION : Used as stops, supports and trust element in j9igs and fixtures.

MATERIAL : Steel Body.

Ball hardened bearing quality.

FINISH : Body blackodised, ball hardened.

Specification in mm

Male Thread type C Flat of F serrated

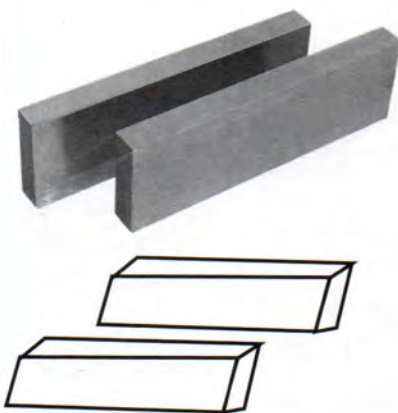
PARALLELS BLOCK

FEATURES :

- Steel Paralles are used to precision packing support workpiece for various machine operations. They can be used for different height combinations. Matched pair ensure equal height support.

- Precision ground in matched pairs.
- Uses heat - treated steel for strength and durability.

Dimensions as per
IS 4241 : 1990

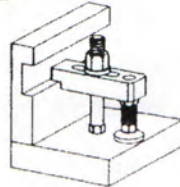
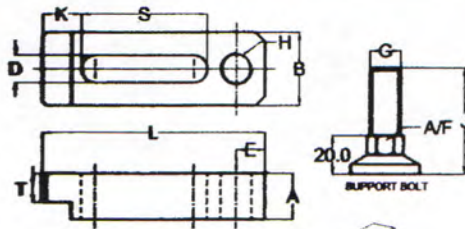


Model :

Product Code	Size	Parallelism	Weight kg/pair
BEPB 20	10 x 20 x 125	0.010	1.400
BEPB 30	15 x 30 x 150		2.600
BEPB 40	20 x 40 x 200		4.500
BEPB 50	25 x 50 x 250	0.012	7.00
BEPB 60	30 x 60 x 300		8.6
BEPB 80	40 x 80 x 350	0.020	17.6
BEPB 100	50 x 100 x 400		32.2

CLAMPING

MOULD CLAMP WITH HEAVY SUPPORT BOLT



Features : Ideally suited to hold mould on Injection Moulding machines & die plates on press platen. Counter height adjustment provided by heavy duty support bolt with hex and round base and lock-nut.

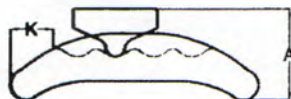
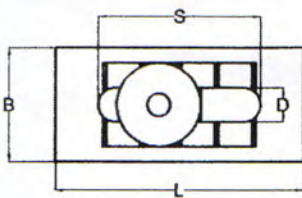
Application : Presses, plastic moulding machines, Milling / Drilling machines and in the design of jigs and fixtures.

Material : Medium carbon steel, heat treated to 8.8 Grade.

Supply : Clamp with support screw and lock-nut. T-Bolt/Stud. Hex nut, Washer optional.

TYPE	BOLT SIZE	A	B	D X L	S	T	K	H	E	SUPPORT BOLT	
										G x J	Hex A/F X Base
BEMC-12115 S	M12	24	38	14 x 115	65	15	20	M16	15	M16 x 55 L	19 x 35
BEMC-12115 L										M16 x 90 L	
BEMC-16130 S	M16	31	48	18 x 130	70	20	25	M20	18	M20 x 60 L	24 x 40
BEMC-16130 L										M20 x 90 L	
BEMC-16160 S	M16	31	48	18 x 160	70	20	30	M20	20	M20 x 60 L	24 x 40
BEMC-16160 L										M20 x 90 L	
BEMC-20140 S	M20	38	60	22 x 140	70	25	35	M24	18	M24 x 60 L	27 x 50
BEMC-20140 L										M24 x 100 L	
BEMC-20160 S	M20	38	60	22 x 160	90	30	35	M24	20	M24 x 60 L	27 x 50
BEMC-20160 L										M24 x 100 L	
BEMC-20200	M20	45	60	22 x 200	110	30	45	M24	22	M24 x 100 L	27 x 50
BEMC-24200	M24	48	78	25 x 200	105	35	45	M24	25	M27 x 100 L	30 x 55

QUICK CLAMP

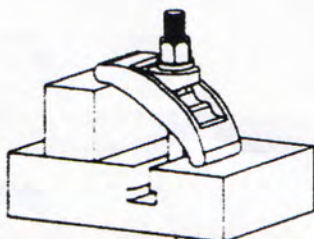


Features : Instant clamping device with self-adjusting design, Multi-locations for saddle offers variable forces.

Application : Presses, plastic moulding machines, milling / drilling machines, CNC machining centers.

Materials : Clamp and saddle made of hi-tensile S G Iron, duly painted. T-Bolt and Flanged Hex Nut heat treated to 24-30 HRC

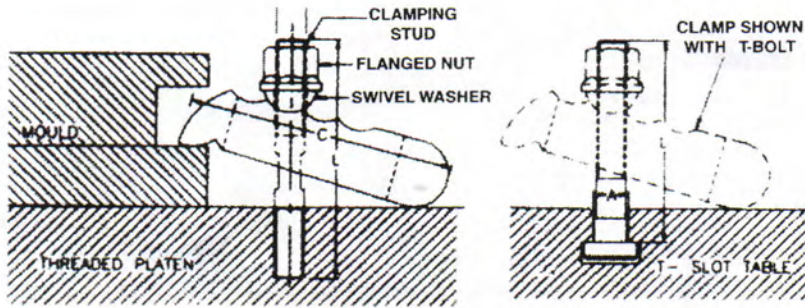
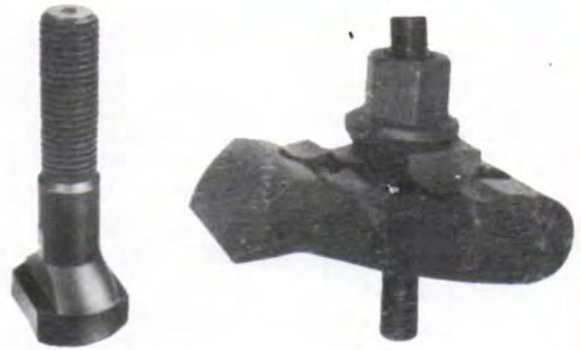
Supply : T-bolt and Flanged Hex-nut standard, Clamping stud optional.



TYPE	SUITABLE FOR T-SLOT	D X S	L X B	A	K	CLAMPING RANGE	T-BOLT SIZE
BEQC - 1/12	12						M 12 x 12 x 125 L
BEQC - 1/14	14	18x85	130x60	50	16	0-60	M 12 x 14 x 125 L
BEQC - 1/16	16						M 16 x 16 x 125 L
BEQC - 2/18	18						M 16 x 18 x 200 L
BEQC - 2/20	20	22x95	160x70	57	32	0-70	M 20 x 20 x 200 L
BEQC - 2/22	22						M 20 x 22 x 200 L
BEQC - 3/24	24						M 24 x 24 x 200 L
BEQC - 3/26	28	26x115	185x80	60	36	0-80	M 24 x 28 x 200 L

CLAMPING

MOULD CLAMP



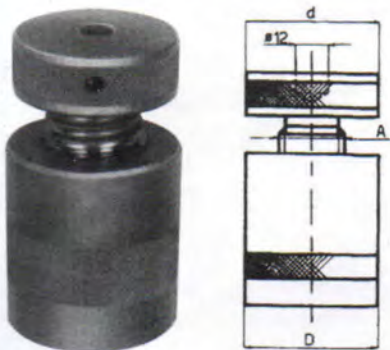
MOULD CLAMP - WITH CLAMPING STUD

MODEL	do x PITCH x L	CLAMPING RANGE B	LENGTH OF CLAMP C	BREADTH OF CLAMP
MC-12	STUD M-12 x 1.75 x 100	0-35	110	50
MC-16	STUD M-16 x 2.0 x 125	0-40	135	60
MC-20	STUD M-20 x 2.5 x 175	0-50	160	70
MC-24	STUD M-24 x 3.0 x 200	0-60	180	80

MOULD CLAMP - WITH T-BOLT

MODEL	do x PITCH x L	T-SLOT SIZE A	CLAMPING RANGE B	LENGTH OF CLAMP C	BREADTH OF CLAMP
MC-12(a)	T-BOLT M-12 x 1.75 x 100	12	0-35	110	50
MC-12(b)	T-BOLT M-12 x 1.75 x 100	14	0-35	110	50
MC-16(a)	T-BOLT M-16 x 2.0 x 130	16	0-40	135	60
MC-16(b)	T-BOLT M-16 x 2.0 x 130	18	0-40	135	60
MC-20(a)	T-BOLT M-20 x 2.5 x 150	20	0-50	160	70
MC-20(b)	T-BOLT M-20 x 2.5 x 150	22	0-50	160	70
MC-24(a)	T-BOLT M-24 x 3.0 x 210	24	0-60	180	80
MC-24(b)	T-BOLT M-24 x 3.0 x 210	28	0-60	180	80

SCREW JACK WITH STEEL BODY :



Type	Range H ₁ H ₂	Base Dia-D0	Base Dia-D1	Static Load Max-Kn	Wt. Kg.
BESJ-40	45-50	32	32	12	0.230
BESJ-50	50-70	50	50	60	0.600
BESJ-70	70-100	50	50	60	0.800
BESJ-100	100-140	70	65	100	2.500
BESJ-140	140-210	80	70	165	4.560
BESJ-190	190-300	98	80	350	9.100

Body and Spindle : Medium carbon Steel, Heat treated, blackened.
Spindal Threads : Trapezoidal self locking with end stop Body.

CLAMPING

RIGID CLAMP

FEATURES :

- For machining of large objects with side clamping.
- Precise Dovetail assures positive compound forward & downward force.
- Side clamping keeps full surface free for complete machining operation in one setting.
- High clamping force sustains heavy cutting forces.
- Mechanical height limit is useful for attaining constant clamping pressure.
- Can be supplied with T bolts & Allen key if ordered.

APPLICATIONS :

- Suitable to use on milling, planing, shaping, lathes, etc.
- Very useful in fixture building for fast clamping & unclamping.
- It is useful for job heights more than 60 mm.

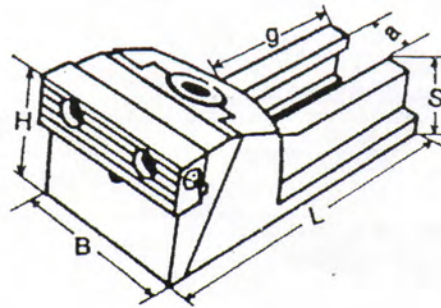
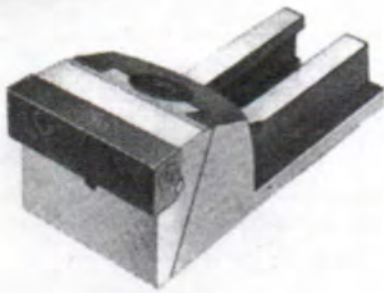
MATERIAL :

- Main body made of S.G. Iron
- Clamping Jaw made of Hardened Steel.

FINISH :

- Powder coated.

Model No.	a	L	B	Min.	Max.	g	s	Approx. Force kN	Allen-key	T-Slot	Weight gms	
BERC-18	18	135	60	55	70	75	28	20	10	8	12 to 18	1500
BERC-26	26	190	80	100	115	120	30	30	15	12	20 to 26	3850
BERC-36	32	255	100	135	170	135	80	50	25	16	28 & above	14250



MOULD CLAMP

FEATURES :

- It is suitable in plastic moulding & press shop.
- It comes as clamp and Nut. Suitable T bolts, Stud, etc. to be added.

MATERIAL :

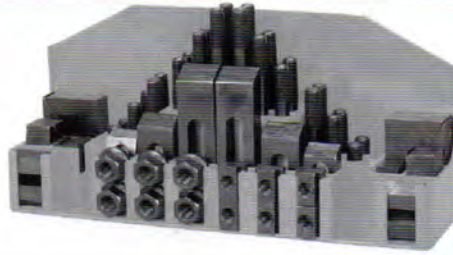
- S.G. Iron



Model No.	A	B	C	E	F	G	H	I	J	K	Wt gms
BEMC - 12	125	75	25	18	53	18	18	38	18	21	900

CLAMPING

CLAMPING KIT



Rack is available for
BECK - 14-12
BECK - 16-12
BECK - 18-12
BECK - 18-16

Type	Suitable For T-Slot X Screw Size	T-Nuts 6 nos each	Clamping Stud Qty : 4 nos. each	Flanged Nuts 6 nos each	Extension Nuts 4 nos each	Stepped Strap Clamps 2 nos. each	Step Blocks SB 2 nos each	Total No. of Pieces
BECK-108	10 x M8	108	875, 8100, 8125 8150, 8175, 8200	M-8	824	865, 8100 8150	SB50 SB210	50
BECK-1210	12 x M10	1210	1075, 10100, 10125 10150, 10175, 10200	M-10	1030	1065, 10100 10150	50, 100 210	52
BECK-1412	14 x M12	1412	1275, 12100, 12125 12150, 12175, 12200	M-12	1236	1265, 12100 12150	50, 100 210	52
BECK-1612	16 x M12	1612	1275, 12100, 12125 12150, 12175, 12200	M-12	1236	1265, 12100 12150	50, 100 210	52
BECK-1812	18 x M12	1812	1275, 12100, 12125 12150, 12175, 12200	M-12	1236	1265, 12100 12150	50, 100 210	52
BECK-1816	18 x M16	1816	1675, 16100, 16125 16150, 16175, 16200	M-16	1648	1665, 16100 16150	50, 100 210	52
BECK-2016	20 x M16	2016	1675, 16100, 16125 16150, 16175, 16200	M-16	1648	1665, 16100 16150	50, 100 210	52
BECK-2220	24 x M20	2220	2075, 20100, 20125 20150, 20175, 20200	M-20	2060	2065, 20100 20150	50, 100 210	52
BECK-2420	24 x M20	2420	2075, 20100, 20125 20150, 20175, 20200	M-20	2060	2065, 20100 20150	50, 100 210	52
BECK-2824	28 x M24	2824	2475, 24100, 24125 24150, 24175, 24200	M-24	2472	2465, 24100 24150	50, 100 210	52

Heel Strap clamp



Heel Strap clamp IS4893-1984/DIN 6316-1980

S.G. iron cast machining, Powder coated.

Item code	D	L	W	E	H	L1	A	B	gm
BEHSC 080	9	80	25	12	25	9	25	25	160
BEHSC 100	11	100	30	15	30	12	32	32	300
BEHSC 120	14	125	40	20	40	16	40	40	680
BEHSC 160	18	160	50	25	50	20	49	49	1400
BEHSC 200	22	200	60	30	60	24	55	55	2500
BEHSC 240	26	250	70	40	70	28	72	72	4300