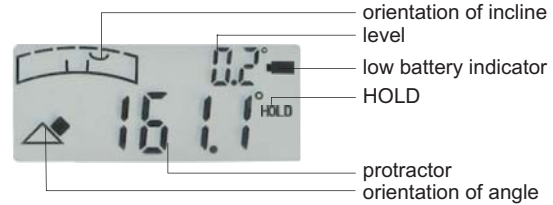
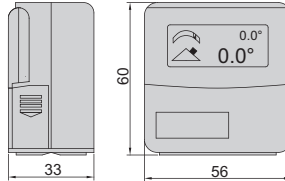


## DIGITAL LEVEL AND PROTRACTOR

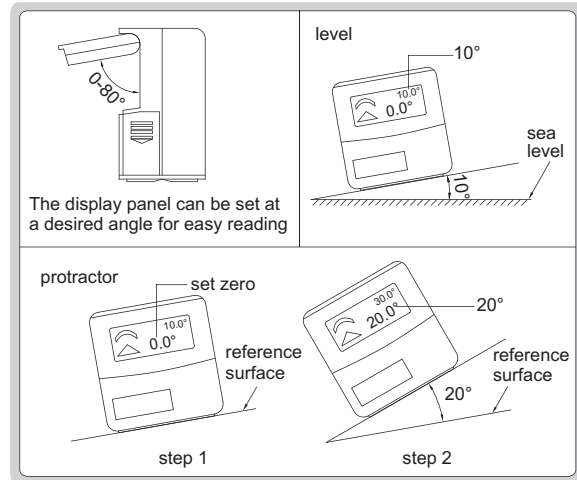


2178-1

Unit: mm



- The display panel can be set at a desired angle for easy reading
- Magnetic bottom with V-groove for shafts
- The sea level is permanently set inside the chip, zero setting is not needed when batteries are replaced
- Buttons: ON/ZERO, HOLD (keep the reading)
- Two AAA batteries
- Automatic power off



Code	Range	Resolution	Accuracy
2178-1	0-180°	0.1° (= 1.745 mm/m)	at 0° and 90°: $\pm 0.1^\circ$ ; others: $\pm 0.2^\circ$