

SHOCKPROOF DIAL INDICATOR

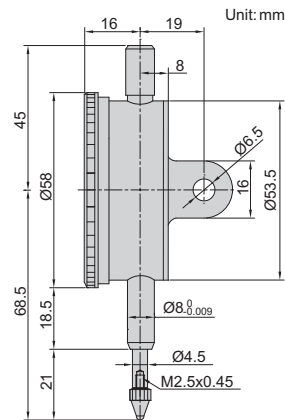
SHOCK
PROOF

JEWELLED
BEARING



2314-10A

- Shockproof
- Jeweled bearing
- Supplied with limit pointers and bezel clamp
- Optional accessory: backs (page 132), contact points (page 128~131)



Code	Range	Graduation	Accuracy	Hysteresis	Range/rev	Dial reading	Remark
2314-3A *	3mm	0.01mm	14 μ m	3 μ m	1mm	0-100	lug back
2314-5A *	5mm	0.01mm	16 μ m	3 μ m	1mm	0-100	lug back
2314-10A *	10mm	0.01mm	20 μ m	3 μ m	1mm	0-100	lug back
2314-3FA *	3mm	0.01mm	14 μ m	3 μ m	1mm	0-100	flat back
2314-5FA *	5mm	0.01mm	16 μ m	3 μ m	1mm	0-100	flat back
2314-10FA *	10mm	0.01mm	20 μ m	3 μ m	1mm	0-100	flat back

* Supplied with manufacturer calibration certificate