

TV DIGITAL MICROSCOPE



ISM-TV200 (with wire)

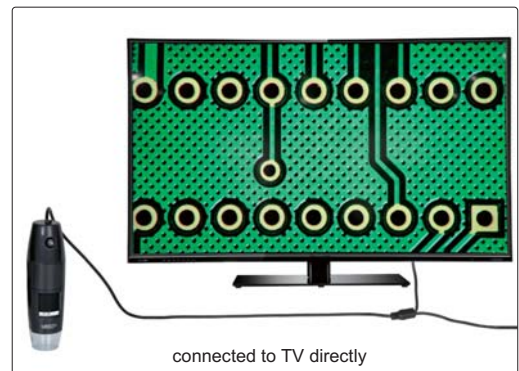


ISM-TV200W (wireless)

STAND (code: ISM-WSTD, optional)



- Connected to TV directly
- For observation, cannot take pictures and videos



connected to TV directly

SPECIFICATION

Code	ISM-TV200	ISM-TV200W
Type	with wire	wireless (maximum transmission distance 5m)
Magnification	10X~200X (on 17" TV)	
Pixel	0.35M	
Illumination	adjustable brightness LED	
Focus	supplied with focus ring, stand (ISM-WSTD) is optional	
Power supply	DC	built-in rechargeable battery

MAGNIFICATION, FOCUS DISTANCE, VIEW FIELD

ISM-TV200			ISM-TV200W		
Magnification	Focus distance	View field	Magnification	Focus distance	View field
50X	21mm	8.1×6.4mm	60X	19mm	6.9×5.2mm
100X	13mm	3.9×3.1mm	80X	16mm	5.0×3.8mm
150X	16mm	2.6×2.1mm	150X	16mm	2.6×2.1mm
200X	19mm	1.8×1.5mm	200X	19mm	1.8×1.5mm