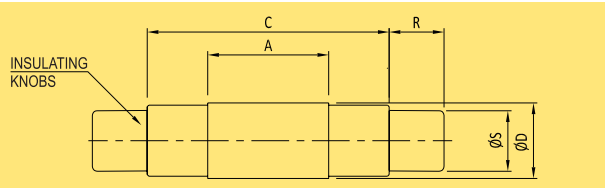
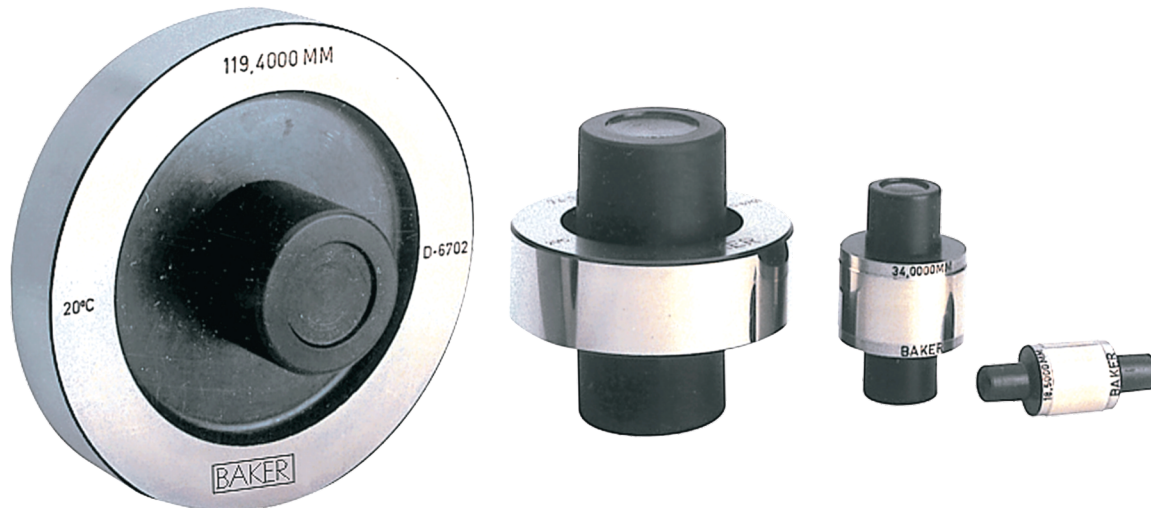


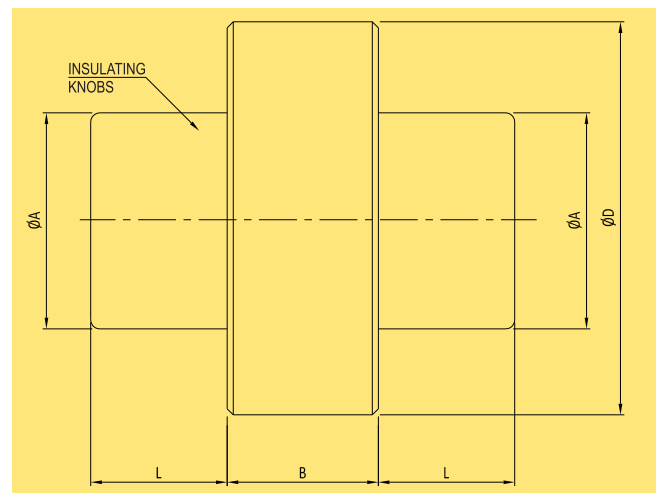
Master Setting Disc



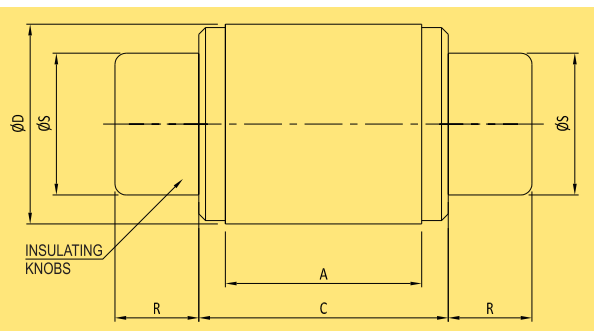
RANGE: 3 - 200 mm



ØD		A	C	R	ØS
ABOVE	UPTO & INCLUDING				
3.0	3.81	9.52	17.46	11.1	2.4
3.81	5.84	11.11	19.05	11.1	3.2
5.84	9.27	12.7	20.64	11.1	5.6



ØD		B	ØA	L
ABOVE	UPTO & INCLUDING			
38.35	51.05	22.2	31.8	15.8
51.05	63.75	22.2	31.8	15.8
63.75	76.45	25.4	38.1	39.8
76.45	89.15	25.4	38.1	39.8
89.15	101.85	25.4	38.1	39.8
101.85	114.55	25.4	38.1	39.8
114.55	127.25	25.4	38.1	39.8
127.25	139.95	25.4	38.1	39.8
139.95	152.65	25.4	38.1	39.8
152.65	165.35	25.4	38.1	39.8
165.35	178.05	25.4	38.1	39.8
178.05	190.75	25.4	38.1	39.8
190.75	200.00	25.4	38.1	39.8



ØD		A	C	R	ØS
ABOVE	UPTO & INCLUDING				
9.27	12.95	14.29	22.22	12.7	8.7
12.95	20.96	15.88	23.81	12.7	12.7
20.96	28.83	17.46	25.4	15.9	19
28.83	38.35	20.64	28.58	15.9	25.4

Nominal Diameter Range (mm)	Size Tolerance (mm)	Roundness & Parallelism
3-20.96	±0.0008	0.0005
20.96-38.35	±0.0011	0.0007
38.35-63.75	±0.0015	0.0010
63.75-114.55	±0.0019	0.0012
114.55-165.35	±0.0024	0.0016
165.35-200	±0.0030	0.0020

Above 200 mm upto 300 mm on request

FEATURES

- Used for setting of measuring instruments like horizontal comparators, length measuring machines for OD checking.
- Made from oil hardened non shrinking gauge steel, hardened and tempered to 60-62 HRC
- Sub-zero treated at -80 °C for long term dimensional stability
- Actual dimensions duly etched
- Calibrated at 20 °C under standards room conditions against national/international traceable standards
- Certificate of calibration is provided along with each master traceable to national/international standards
- Certificate under NABL (as per ISO 17025) as per request
- Manufactured as per ASME B47.1 (blank design) & ASME B89.1.5 (for form tolerance class X, size tolerance class Y & surface finish class XXX)