

Thread Gauge

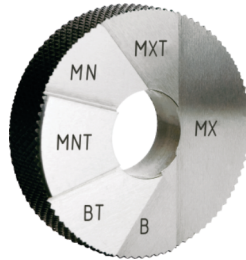
NPTF, ANPT



L1 Ring



L2 Ring



6 Step Crest Check Ring



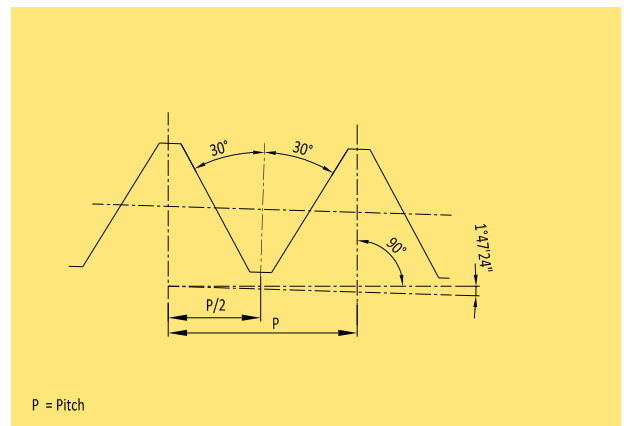
L1 Plug



L3 Plug



6 Step Crest Check Plug

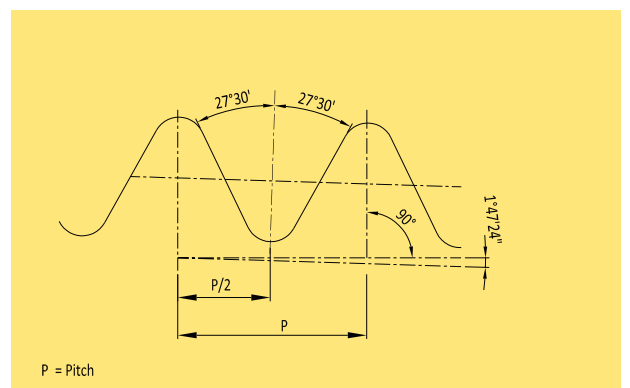
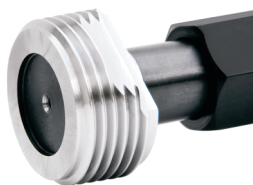


NPTF threads are also known as Dryseal threads as they do not require a sealant to form a leak-proof joint.

Type	Standard	Plug gauges	Ring gauges
NPTF	ANSI/ASME B 1.20.5	Thread plug gauges L1 & L3 (Basic Step or Min/Max Step)	Thread ring gauges L1 & L2 (Basic Step or Min/Max Step)
ANPT	SAE AS71051B	6 Step Crest Check Plug	6 Step Crest Check Ring

- NPTF & ANPT threads require additional gauging as the truncation of these threads should be maintained within specified limits.
- L1 & L3 plug gauges and L1 & L2 Ring gauges are used in combination to verify the size and taper of the component threads along the thread length.
- 6 Step Crest check plug and ring gauges are used to verify the crest diameter and truncation of the component threads along the thread length.

TAPER PIPE THREADS ISO 7-R, BSPT, PT



- These are taper pipe threads where pressure tight joints are made on threads. The thread angle is 55°
- Gauges are manufactured as per ISO 7-2, EN 10226, BS 21, JIS B0253