



# TAPARIA TOOLS LTD.

AN ISO-9001 COMPANY



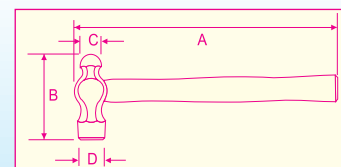
## HAMMERS

- ★ Available in Ball Pein, Cross Pein and Claw version.
- ★ Head drop forged made from high grade steel.
- ★ Head differentially heat treated to ensure safe use.



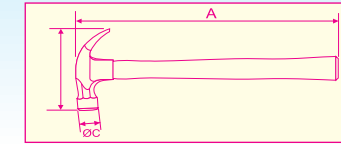
### BALL PEIN & CROSS PEIN HAMMER

PROD. NO	A	B	C	D	WT. GMS
110	260	64	18	20	170
340	315	90	26	28	425
200	300	80	20	25	325
500	330	105	25	30	710
600	375	110	30	35	815
800	375	120	32	40	1050



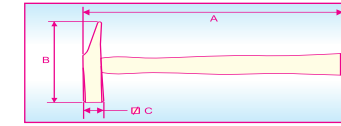
### CLAW HAMMER

PROD. NO	A	B	ØC	WT. GMS
C H 340	350	120	28	510
C H 450	310	127	27	620



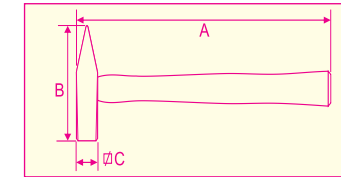
### ELECTRIAN HAMMER WITH HANDLE

PROD. NO	A	B	C	WT. GMS
EH 15	280	140	15	250



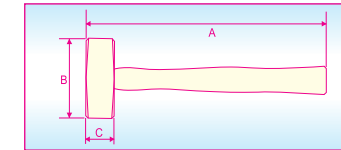
### MACHINIST HAMMER WITH HANDLE

PROD. NO	A	B	ØC	WT. GMS
MH 100	260	85	15	160
MH 200	280	95	19	270
MH 300	300	105	22	430
MH 400	310	115	25	510
MH 500	320	120	27	600



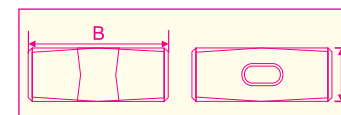
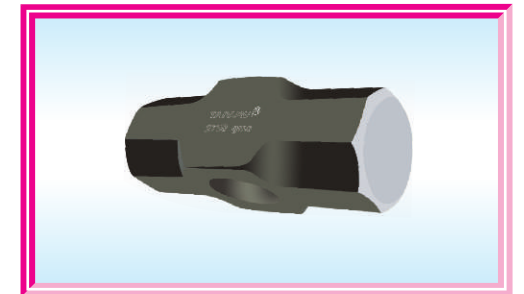
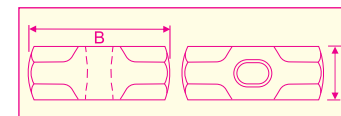
### CLUB HAMMER WITH HANDLE

PROD. NO	A	B	C	WT. GMS
GH 800	250	92	36	950
GH 1000	260	96	38	1150
GH 1200	260	102	42	1400
GH 1500	260	110	44	1650



### SLEDGE & CLUB HAMMER HEAD

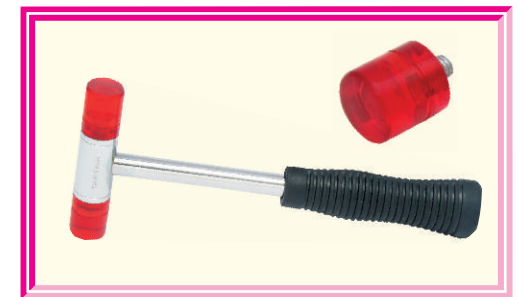
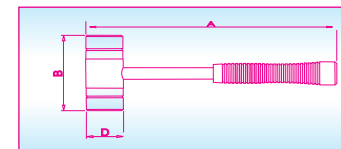
PROD. NO	B	C	WT. GMS
SHH 900	105	36	900
SHH 1350	120	42	1350
SHH 1800	133	46	1800
SHH 2700	155	54	2700
SHH 3600	168	58	3600
GHH 800	92	36	800
GHH 1000	96	38	1000
GHH 1250	102	42	1250
GHH 1500	110	44	1500



### Soft Mallet Hammer

- ★ TAPARIA has launched its range of soft mallet hammers.
- ★ The soft mallet hammers are available in 20mm, 25mm, 30mm, 40mm, & 50mm sizes.
- ★ Taparia will also offer spares for these soft Mallet Hammers.

PROD. NO	A	B	C	D	WT. GMS
SFH 20	272	74	--	20	240
SFH25	272	90	--	25	320
SFH30	272	90	--	30	425
SFH40	330	122	--	40	800
SFH50	330	124	--	50	1120



# TAPARIA TOOLS LTD.



Head Office : 423 / 424, A-2, Shah & Nahar, Lower Parel (W), Mumbai - 400 013. & : 2493 8646 - 50  
 Fax : 91-22-2495 3230. • E-mail : sales@tapariatools.com • Web Site : http://www.tapariatools.com  
 Works : 52-B, M. I. D. C., Satpur, Nashik - 422 007. & : 2350 317 / 318 / 418 • Fax : 0253-2350740



An ISO-9001 Company

TAPARIA® TAPARIA® TAPARIA® TAPARIA® TAPARIA®