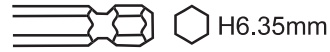


# BM<sup>®</sup> Screwdriver Power Bits

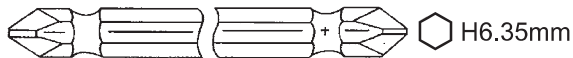
## 1/4" HEX SHANK (SINGLE ENDED BITS)



SLOTTED ⊖	PHILIPS HEAD ⊕	TORX ⚙	ALLEN ●	POZI DRIVE ⊕
Tip x Length (mm)	Tip x Length (mm)	Tip x Length (mm)	Tip x Length (mm)	Tip x Length (mm)
3 x 50 / 75 / 100 4 x 50 / 75 / 100 5 x 50 / 75 / 100 6 x 50 / 75 / 100 8 x 50 / 75 10 x 75	PH00 x 50 PH0 x 50 / 100 PH1 x 50 / 75 / 100 / 150 *PH2 x 50 / 75 / 100 / 150 PH3 x 50 / 75 / 100 / 150 PH4 x 50	T5 / T6 / T7 x 50 T8 / T10 x 50 / 75 / 100 / 150 T15 / T20 x 50 / 75 / 100 / 150 T25 / T30 x 50 / 75 / 100 / 150 T35 / T40 x 50 / 75 / 100 / 150 T45 x 50 / 75	2 x 50 2.5 x 50 / 100 3 x 50 / 65 / 100 4 x 50 / 65 / 100 5 x 50 / 65 / 100 6 x 50 / 65 / 100 8 / 10 x 70	PZ1 x 50 PZ1 x 75 PZ1 x 100 PZ2 x 50 PZ2 x 75 PZ2 x 100 PZ3 x 75 / 100

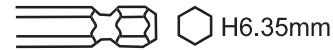
\*Also available in 6mm Dia

## 1/4" HEX SHANK (DOUBLE ENDED BITS)



PHILIPS HEAD ⊕	POZI DRIVE ⊕
Tip x Length (mm)	Tip x Length (mm)
PH1 x 50 / 75 / 100 / 150 PH2 x 50 / 75 / 100 / 150 PH2 x 200 / 250 / 300 PH3 x 50 / 75 / 100 / 150	PZ1 x 75 / 100 PZ2 x 75 / 100 PZ3 x 75 / 100

## 1/4" HEX SHANK - BALL TYPE



ALLEN ●
Tip x Length (mm)
5 x 50 6 x 50 5 x 200 6 x 200

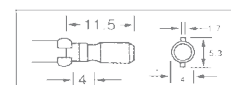
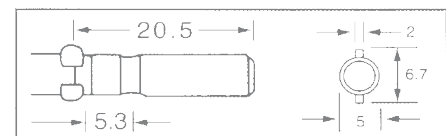
## 1/4" HEX SHANK (INSERT TYPE SCREW BITS)



SLOTTED ⊖	PHILIPS ⊕	TORX ⚙	ALLEN ●	POZI ⊕	TORQ SET ⊕
Tip x Length (mm)	Tip x Length (mm)	Tip x Length (mm)	Tip x Length (mm)	Tip x Length (mm)	Tip x Length (mm)
3 x 25 4 x 25 5 x 25 6 x 25	PH1 x 25 PH2 x 25 PH3 x 25	T6 / T8 x 25 T10 / T15 x 25 T20 / T25 x 25 T30 / T40 x 25	2 / 2.5 x 25 3 / 4 x 25 5 x 25 6 x 25	PZ1 x 25 PZ2 x 25 PZ3 x 25	TS5 x 25 TS6 x 25 TS8 x 25 TS10 x 25

## PHILIPS SCREW BITS

4 mm ROUND SHANK (Single Ended)	5 mm ROUND SHANK (Single Ended)	5 mm HEX SHANK (Double Ended)
Tip x Length (mm)	Tip x Length (mm)	Tip x Length (mm)
PH00 x 40 PH0 x 40 PH1 x 60 PH2 x 60 PH3 x 60	PH00 x 60 PH0 x 60 PH1 x 60 / 100 PH2 x 60 / 100 / 120	PH1 x 70 PH1 x 100 PH2 x 70 PH2 x 100 PH2 x 150





# BM<sup>®</sup> Screwdriver Power Bits

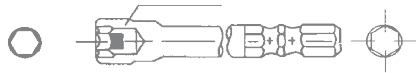
## 1/4" HEX SHANK NUT RUNNERS / BIT SOCKET H6.35mm

Nut runners / Nut setters are socket tools used for fastening nuts & bolts that have hex heads. A magnetic nut runner feature magnetic shafts for holding the fastener & driving hex head sheet metals screws, main features as under:

- High quality hardened steel
- Standard hex design
- Heat treated for strength and durability
- Made to tight tolerances to ensure accurate fit



NON MAGNETIC 	MAGNETIC 
A/F x Length (mm)	A/F x Length (mm)
5 x 65	5 x 65
5.5 x 65 / 100	5.5 x 65
6 x 65	6 x 65
7 x 65 / 100	7 x 65
8 x 65 / 100 / 150	8 x 65
10 x 65 / 100 / 150	10 x 65
11 x 65 / 100	11 x 65
12 x 65 / 100	1/4" x 65
13 x 65 / 100	3/8" x 65
14 x 65 / 100	



1/4" Hex Magnetic Bit Holder (Length 75 mm)

## 1/4" HEX SPRING LOADED SLOTTED BIT FINDER (MAKE CARGO)

We provide spring loaded slotted bit finder extensively used in automobile assembly lines. Spring loaded bit finder plays an important role to easily locate and tighten the screws swiftly.



Part No.	Shank Dia	Tip Size	Length (mm)
FSM040	4 mm	0.6	90
FSM050	4.9 mm	0.7	90
FSM060	6.12 mm	0.9	90

## Impact Quick Change Adaptor

Adapts standard square drive chucks to 1/4" hex drive that are compatible with power bits.

3/8" QC Adaptor



1/2" QC Adaptor



1/2" QC Adaptor



For Single End Bits

## Bit Magnetizer Ring

The powerful magnetic ring slips over & magnetize any 1/4" steel shank.

