



Price List - Drills MC 45

(With effect from 7th December 2018)



Addison & Co Ltd., established in 1873, is India's largest manufacturer of HSS Cutting Tools. The Company's current product range:

I. HSS Tools:

- a) Twist Drills
- b) Centre Drills
- c) Reamers
- d) Taps
- e) End Mills
- f) Counter Bores
- g) Countersinks
- h) Milling Cutters
- i) Tool Bits
- j) Broaches and Hobs

II. Carbide Tools:

- a) Multi-point Carbide-tipped Tools
- b) Solid Carbide Drills
- c) Solid Carbide Centre Drills
- d) Solid Carbide Reamers and
- e) Solid Carbide Endmills

III. Machine Tools:

- a) Tool and Cutter Grinder
 - Manual
 - CNC
- b) Drill Point Grinders
- c) Goniometer (Drill Measuring Instrument) and
- d) Accessories for our machines

At Addison, we have a policy – to build Precise tools which are of highest quality and to extend excellent technical service to the end-users.

Addison, an ISO 9001:2015 and ISO 14001:2015 certified company, manufactures tools with high quality CNC machines, state-of-the art manufacturing technology, a well-equipped metallurgical lab, a Tool Tech Centre (R&D) and Total Quality Control which has put its metal cutting tools on par with the best brands of cutting tools in the world.

The High Speed Steel and carbide rods used for manufacturing the above tools are of highest quality and procured from Europe, Japan and India.

Distribution of the above products in India is primarily done through the network of Authorised Dealers and Sub Dealers.

Addison also exports HSS and Carbide Tools to USA, Canada, Japan, Europe, Australia, Latin America, South East Asia, Middle-East and Africa.



Terms and Conditions

Price

This supersedes all our previous price lists.

Prices given in this pricelist are base prices. Taxes are extra as applicable.

Price given here are for standard products

For unlisted intermediate sizes, the higher price of the nearest listed size will apply.

The prices are for delivery on F.O.R. Destination

The prices are based on the present input costs and are subject to revision without prior notice.

The dealers / stockists are free to sell the goods at prices lower than the prices indicated in this price list.

Minimum Order Quantities (MOQ)

The Minimum Ordering Quantities (MOQ) mentioned against each product in this price list are for each size / length / bore size of that product. Any order for a quantity lesser than MOQ can be supplied with an additional surcharge, which will be furnished on request.

Delivery

Standard deliveries are indicated below, however Special Deliveries can be considered on request based on available load position at the time of Ordering.

*** FMI (Fast Moving Items) – within 6 weeks for MOQ Quantities from the date of Firm Order**

**** SFMI (Semi-fast Moving Items) – within 8 Weeks for MOQ Quantities from the date of Firm Order**

OTHER Items – within 12 Weeks for MOQ Quantities from the date of Firm Order

Other Instructions

The products indicated in this pricelist are confirming to National & International Standards. However, we can manufacture and supply special and customized tools as per the requirement of the customers and end-users on request. For special requirements please send your enquiries to: customersupport@addison.co.in

Quick Spiral and Slow Spiral Drills			
Series	Size	Standard	Surcharge (extra) on listed price indicated in this Price List
Parallel Shank Twist Drills			
Jobber Series	1.0 mm - 3.17 mm (1/8")	IS 5101 - 1991 BS 328 (PART 1) 1986	50%
	Above 3.17 mm (1/8")	IS 5101 - 1991 BS 328 (PART 1) 1986	25%



Stub Series	1.0 mm - 3.17 mm (1/8")	IS 5100 - 1969 BS 328 (PART 1) 1986	50%	
	Above 3.17 mm (1/8")	IS 5100 - 1969 BS 328 (PART 1) 1986	25%	
Long Series	1.0 mm - 3.17 mm (1/8")	IS 5102 - 1969 BS 328 (PART 1) 1986	50%	
	Above 3.17 mm (1/8")	IS 5102 - 1969 BS 328 (PART 1) 1986	25%	
Taper Shank Twist Drills				
All Series of Taper Shank	3.0 mm - 102.0 mm (4")	IS 5103 - 1969 BS 328 (PART 1) 1986	25%	
Extra Long Series				
Parallel Shank	3.0 mm - 12.5 mm (1/2")	IS 7823-2005	25%	
Taper Shank	3.0 mm - 102.0 mm (4")	IS 7822-2005	25%	
Left Hand Drills				
Parallel Shank	Jobber Series	3.0 mm and above	IS 5101 - 1991 BS 328 (PART 1) 1986	35%
	Stub Series	3.0 mm and above	IS 5100 - 1969 BS 328 (PART 1) 1986	25%
	Long Series	3.0 mm and above	IS 5102 - 1969 BS 328 (PART 1) 1986	25%
Taper Shank Twist Drills	3.0 mm - 102 mm (4")	IS 5103 - 1969 BS 328 (PART 1) 1986	25%	
Taper Shank Core Drills	7.0 mm - 76.2 mm (3")	IS 5366 - 1959 BS 328 (PART 1) 1986	25%	
Oversize Taper Shank Drills	Any size	IS 5366 - 1959 BS 328 (PART 1) 1986	10%	



CONTENTS

	Page No.
• Parallel Shank Twist Drills - Jobber Series ...	5 to 10
○ M 2 Forge Formed Drills	
○ M 2 Ground Drills	
○ M 2 Ground Drills with Gold Finish	
○ M 2 Ground Drills TIN Coated	
○ Addsonic series	
○ Addsonic series TIN Coated	
○ M 42	
○ M 42 TIN Coated	
• Parallel Shank Twist Drills - M 2 Stub Series ...	11 and 12
• Parallel Shank Twist Drills - Long Series ...	13 and 14
○ M 2	
○ M 35	
○ M 35 TIN Coated	
○ M 35 TiAlN Coated	
• Parallel Shank Twist Drills - M 2 Extra Long ...	15
• Taper Shank Twist Drills ...	16 to 22
○ M 2	
○ M 35	
○ M 42	
○ M 2 with Crank Shaft Design	
○ M 35 with Crank Shaft Design	
• Taper Shank Twist Drills – M 2 Long Series ...	23 to 24
• Taper Shank Twist Drills – M 2 Extra Long ...	25 to 40
• Shell Drills – M 2 ...	40
• Centre Drills – BS, Type 'A', 'B' and 'R' ...	41
○ M 2	
○ M 35	
○ M 35 TIN Coated	
• Taper Shank Core Drills – M 2 ...	42



HSS PARALLEL SHANK TWIST DRILLS JOBBER SERIES

IS 5101 - 1991
BS 328 (PART 1) 1986

Size		WG / LG	Price Per Ten (Rs.)								MOQ (No)
mm	inch		M2 FFD	M2 Ground	M2 Ground Gold	M2 Ground TIN-Coated	Addsonic	Addsonic TIN-Coated	M42	M42 TIN-Coated	
0.3				3122	3175						200
0.4				3122	3175						200
0.5				3122	3175						200
0.6				3122	3175						200
0.7				1783	1813						200
0.8				1783 **	1813						200
0.9				1783 **	1813						200
1.0			435 *	435	443	757	561	897			200
(1.02)		60	435	435	443						200
(1.04)		59	435	435	443						200
(1.07)		58	435	435	443						200
(1.09)		57	435	435	443						200
1.10			435 **	435	443	757	561	897			200
(1.18)		56	435	435	443						200
(1.19)	3/64		435	435	443		561				200
1.20			435 **	435 **	443	757	561	897			200
1.30			435 **	435	443	757	561	897			200
(1.32)		55	435	435	443						200
1.40		54	435 **	435 **	443	757	561	897			200
1.50			413 *	413 *	421	757	532	897			200
(1.51)		53	413	413	421						200
(1.59)	1/16		413	413	421		532				200
1.60			413 *	413 **	421	757	532	897			200
(1.61)		52	445	445	453						200
1.70			445 **	445	453	793	563	933			200
(1.70)		51	445	445	453						200
(1.78)		50	445	445	453						200
1.80			445 *	445 **	453	793	563	933			200
(1.85)		49	445	445	453						200
1.90			445 **	445 **	453	793	563	933			200
(1.93)		48	445	445	453						200
(1.98)	5/64		445	445	453		563				200
(1.99)		47	445	445	453						200
2.00			445 *	445 *	453	793	563	933			200
(2.06)		46	445	445	453						200
(2.08)		45	445	445	453						200
2.10			445 *	445 **	453	853	563	993			200
(2.18)		44	445	445	453						200
2.20			445 *	445 **	453	853	563 **	993			200
(2.26)		43	445	445	453						200
2.30			445 *	445	453	853	563	993			200
(2.37)		42	445	445	453						200
(2.38)	3/32		445	445	453		563				200
2.40			445 *	445 **	453	853	563	993			200
(2.44)		41	445	445	453						200
(2.49)		40	445	445	453						200
2.50			445 *	445 *	453	853	563	993			200
(2.53)		39	445	445	453						200
(2.58)		38	445	445	453						200
2.60			445 *	445 **	453	853	563	993			200
(2.64)		37	445	445	453						200
2.70			445 *	445 **	453	853	563	993			200
(2.71)		36	445	445	453						200
(2.78)	7/64		445	445	453		575				200
(2.79)		35	486	486	495						200

ADDSONIC DRILLS - Below 3 mm will be supplied without split point

Jobber upto 3mm not recommended for TIN-Coated as price performance ratio does not suits. However if application demands we can supply.

For more details please refer our Drill Catalogue Pages 7 to 22.



HSS PARALLEL SHANK TWIST DRILLS JOBBER SERIES

IS 5101 - 1991
BS 328 (PART 1) 1986

Size		WG / LG	Price Per Ten (Rs.)								MOQ (No)
mm	inch		M2 FFD	M2 Ground	M2 Ground Gold	M2 Ground TIN-Coated	Addsonic	Addsonic TIN-Coated	M42	M42 TIN-Coated	
2.80			486 *	486 **	495	901	575	993	836	1309	200
(2.82)		34	486	486	495						200
(2.87)		33	486	486	495						200
2.90			486 *	486	495	901	575	993	836	1309	200
(2.95)		32	486	486	495						200
3.00			486 *	486 *	495 **	901 **	637	1079	836	1309	200
(3.05)		31	579	579	589		763				200
3.10			579 *	579 **	589	935	763	1126	992	1372	200
(3.17)	1/8		579 *	579 *	589		763				200
3.20			600 *	600 *	611	956	783	1158	1034	1404	200
(3.26)		30	600	600	611		783				200
3.30			600 *	600 **	611	956	783	1158	1034	1404	200
3.40			600 *	600	611	956	783	1158	1034	1404	200
(3.45)		29	600	600	611		783				200
3.50			600 *	600 *	611	956	783	1158	1034	1404	200
(3.57)		28	600	600	611		783				200
(3.57)	9/64		600 *	600 **	611		783				200
3.60			848 *	848	863	1211	1117	1490	1462	1843	200
(3.66)		27	848	848	863		1117				200
3.70			848 *	848 **	863	1211	1117	1490	1462	1843	200
(3.73)		26	848	848	863		1117				200
(3.80)		25	848 *	848	863		1117				200
3.80			848	848 **	863	1211	1117	1490	1462	1843	200
(3.86)		24	848	848	863		1117				200
3.90			848 **	848	863	1211	1117	1490	1462	1843	200
(3.91)		23	848	848	863		1117				200
(3.97)	5/32		848 *	848 **	863		1117				200
(3.99)		22	848	848	863		1117				200
4.00			848 *	848 *	863	1211	1117	1490	1462	1843	200
(4.04)		21	1035	1035	1053		1347				200
(4.09)		20	1035	1035	1053		1347				200
4.10			1035 *	1035 *	1053	1402	1347	1737	1764	2165	200
4.20			1035 *	1035 *	1053 **	1402	1347	1737	1764	2165	200
(4.22)		19	1035	1035	1053		1347				200
4.30			1035 *	1035 **	1053	1402	1347	1737	1764	2165	200
(4.30)		18	1035	1035	1053		1347				200
(4.37)	11/64		1035 *	1035	1053		1347				200
(4.39)		17	1035	1035	1053		1347				200
4.40			1035 *	1035 **	1053	1402	1347	1737	1764	2165	200
(4.50)		16	1355	1355	1379		1775				200
4.50			1355 *	1355 *	1379 **	1732	1775	2165	2317	2723	200
(4.57)		15	1355	1355	1379		1775				200
4.60			1355 **	1355	1379	1732	1775	2165	2317	2723	200
(4.62)		14	1355	1355	1379		1775				200
4.70		13	1355	1355	1379	1732	1775	2165	2317	2723	200
(4.76)	3/16		1355 *	1355 **	1379		1775				200
4.80		12	1355 *	1355 **	1379	1732	1775	2165	2317	2723	200
(4.85)		11	1469	1469	1496		1921				200
4.90			1469 *	1469 **	1496	1848	1921	2326	2517	2927	200
(4.92)		10	1469 **	1469	1496		1921				200
(4.98)		9	1469	1469	1496		1921				200
5.00			1469 *	1469 *	1496 **	1848	1921 **	2326	2517	2927	200
(5.06)		8	1469	1469	1496		1921				100
5.10			1469 *	1469 **	1496	1848	1921	2326	2517	2927	100
(5.11)		7	1469	1469	1496		1921				

Jobber upto 3mm not recommended for TIN-Coated as price performance ratio does not suits. However if application demands we can supply.

For more details please refer our Drill Catalogue Pages 7 to 22.



HSS PARALLEL SHANK TWIST DRILLS JOBBER SERIES

IS 5101 - 1991
BS 328 (PART 1) 1986

Size		WG / LG	Price Per Ten (Rs.)								MOQ (No)
mm	inch		M2 FFD	M2 Ground	M2 Ground Gold	M2 Ground TIN-Coated	Addsonic	Addsonic TIN-Coated	M42	M42 TIN-Coated	
(5.16)	13/64		1469 *	1469 *	1496		1921				100
(5.18)		6	1469	1469	1496		1921				100
5.20			1469 *	1469 *	1496	1848	1921	2326	2517	2927	100
(5.22)		5	1583	1583	1611		2078				100
5.30			1583 *	1583	1611	1965	2078	2487	2715	3141	100
(5.31)		4	1583 **	1583	1611		2078				100
5.40			1583 **	1583 **	1611	1965	2078	2487	2715	3141	100
(5.41)		3	1583	1583	1611		2078				100
5.50			1583 *	1583 *	1611 **	1965	2078	2487	2715	3141	100
(5.56)	7/32		1583 *	1583 **	1611		2078				100
5.60			1583	1583	1611	1965	2078	2487	2715	3141	100
(5.61)		2	1780	1780	1811		2339				100
5.70			1780	1780	1811	2167	2339	2744	3059	3485	100
(5.79)		1	1780 **	1780	1811		2339				100
5.80			1780 *	1780	1811	2167	2339	2744	3059	3485	100
5.90			1780 *	1780	1811	2167	2339	2744	3059	3485	100
(5.94)		A	1780	1780	1811		2339				100
(5.95)	15/64		1780	1780	1811		2339				100
6.00			1780 *	1780	1811 **	2167	2339	2744	3059	3485	100
(6.04)		B	1934	1934 *	1969		2548				100
6.10			1934 *	1934	1969	2432	2548	3056	3331	3859	100
(6.15)		C	1934	1934	1969		2548				100
6.20			1934 *	1934 **	1969	2432 **	2548	3056	3331	3859	100
(6.25)		D	1934	1934	1969		2548				100
6.30			1934 *	1934	1969	2432 **	2548	3056	3331	3859	100
(6.35)	1/4	E	1934 *	1934 *	1969		2548				100
6.40			1934 *	1934 **	1969	2432	2548	3056	3331	3859	100
6.50			2473 *	2473 *	2517 **	2985	3247	3430	4239	4802	100
(6.53)		F	2473	2473	2517		3247				100
6.60			2473 **	2473 **	2517	3028	3247	3827	4239	4856	100
(6.63)		G	2473	2473	2517		3247				100
6.70			2473 *	2473 **	2517	3028	3247	3827	4239	4856	100
(6.75)	17/64		2473 *	2473 **	2517		3247				100
(6.75)		H	2473	2473	2517		3247				100
6.80			2473 *	2473 *	2517 **	3028	3247	3827	4239	4856	100
6.90			2710 *	2710 **	2759	3272	3549	4149	4646	5264	100
(6.90)		I	2710	2710	2759		3549				100
7.00			2710 *	2710 *	2759	3272	3549	4149	4646	5264	100
(7.03)		J	2710	2710	2759		3549				100
7.10			2710 *	2710 **	2759	3272	3549	4149	4646	5264	100

For more details please refer our Drill Catalogue Pages 7 to 22.



**HSS PARALLEL SHANK TWIST DRILLS
JOBBER SERIES**

**IS 5101 - 1991
BS 328 (PART 1) 1986**

Size		WG / LG	Price Per Ten (Rs.)								MOQ (No)
mm	inch		M2 FFD	M2 Ground	M2 Ground Gold	M2 Ground TIN-Coated	Addsonic	Addsonic TIN-Coated	M42	M42 TIN-Coated	
(7.14)		K	2710	2710	2759		3549				100
(7.14)	9/32		2710 *	2710 **	2759		3549				100
7.20			2710 *	2710	2759	3272	3549	4149	4646	5264	100
7.30			2855 *	2855	2906	3420	3749	4353	4907	5532	100
(7.37)		L	2855	2855	2906		3749				100
(7.40)			2855 **	2855 **	2906	3420	3749 **	4353	4907	5532	100
(7.49)		M	2855	2855	2906		3749				100
7.50			2855 *	2855 **	2906	3420	3749	4353	4907	5532	100
(7.54)	19/64		3093	3093	3149		4061				100
7.60			3093 **	3093	3149	3813	4061	4814	5304	6089	100
(7.67)		N	3093	3093	3149		4061				100
7.70			3093	3093 **	3149	3813	4061	4814	5304	6089	100
7.80			3093 *	3093 **	3149	3813	4061	4814	5304	6089	100
7.90			3093 **	3093	3149	3813	4061	4814	5304	6089	100
(7.94)	5/16		3394 *	3394 *	3454		4459				100
8.00			3394 *	3394 *	3454	4122	4459	5221	5826	6625	100
(8.03)		O	3394	3394	3454		4459				100
8.10			3394 *	3394	3454	4122	4459	5221	5826	6625	100
8.20			3394 *	3394	3454	4122	4459	5221	5826	6625	100
(8.20)		P	3394	3394	3454		4459				100
8.30			4117 *	4117 **	4191	4866 *	5397	6196	7058	7890	100
(8.33)	21/64		4117 *	4117 **	4191		5397				100
8.40			4117 *	4117 **	4191	4866	5397	6196	7058	7890	100
(8.43)		Q	4117	4117	4191		5397				100
8.50			4117 *	4117 *	4191 **	4866	5397	6196	7058	7890	100
8.60			4117 *	4117 **	4191	5162	5397	6486	7058	8190	100
(8.61)		R	4117	4117	4191		5397				100
8.70			4117 *	4117 **	4191	5162	5397	6486	7058	8190	100
(8.73)	11/32		4334 *	4334	4412		5691				100
8.80			4334 *	4334 **	4412	5385	5691	6786	7433	8577	100
(8.84)		S	4334	4334	4412		5691				100
8.90			4334 **	4334	4412	5385	5691	6786	7433	8577	100
9.00			4334 *	4334 *	4412	5385	5691	6786	7433	8577	100
(9.09)		T	4521	4521	4602		5940				100
9.10			4521 *	4521	4602	5578	5940	7044	7757	8909	100
(9.13)	23/64		4521	4521	4602		5940				100
9.20			4521 *	4521	4602	5578	5940	7044	7757	8909	100
9.30			4521 **	4521 **	4602	5578	5940	7044	7757	8909	100
(9.34)		U	4521	4521 *	4602		5940				100
9.40			4521 **	4521 **	4602	5578	5940	7044	7757	8909	100
9.50			4521 *	4521 *	4602	5578	5930	7044	7757	8909	100
(9.52)	3/8		5121 *	5121 **	5212		6735				100
(9.58)		V	5121	5121	5212		6735				100
9.60			5121 *	5121 **	5212	6342	6735	8009	8791	10120	100
9.70			5121 *	5121	5212	6342	6735	8009	8791	10120	100
9.80			5121 *	5121 **	5212	6342	6735	8009	8791	10120	100
(9.80)		W	5121	5121	5212		6735				100
9.90			5731 **	5731	5833	6969	7539	8823	9846	11192	100
(9.92)	25/64		5731 **	5731	5833		7539				100

For more details please refer our Drill Catalogue Pages 7 to 22.



**HSS PARALLEL SHANK TWIST DRILLS
JOBBER SERIES**

**IS 5101 - 1991
BS 328 (PART 1) 1986**

Size		WG / LG	Price Per Ten (Rs.)								MOQ (No)
mm	inch		M2 FFD	M2 Ground	M2 Ground Gold	M2 Ground TIN-Coated	Addsonic	Addsonic TIN-Coated	M42	M42 TIN-Coated	
10.00			5731 *	5731 *	5833	6969	7528 **	8823	9846	11192	100
(10.08)		X	5731	5731	5833		7539				100
10.10			5731 *	5731 **	5833	7468	7539	9466	9846	11192	100
10.20			5731 *	5731 *	5833 **	7468	7528	9466	9846	11192	100
(10.26)		Y	6218	6218	6329		8165				100
10.30			6218 *	6218	6329	7468	8165	9466	10670	12039	100
(10.32)	13/32		6218 *	6218	6329		8165				100
10.40			6218 *	6218	6329	7468	8165	9466	10670	12039	100
(10.49)		Z	6218	6218	6329		8165				100
10.50			6218 *	6218 *	6329	7468	8165	9466	10670	12039	100
10.60			6218 *	6218	6329	7935	8165	10066	10670	12146	100
10.70			6580 *	6580	6698	7935	8645	10066	11296	12789	50
(10.72)	27/64		6580 **	6580	6698		8645				50
10.80			6580 *	6580	6698	7935	8645	10066	11296	12789	50
10.90			6580 *	6580 **	6698	7935	8645	10066	11296	12789	50
11.00			6580 *	6580 **	6698	7935	8645	10066	11296	12789	50
11.10			7345 **	7345	7476	9136	9648	11631	12602	14129	50
(11.11)	7/16		7345 *	7345 **	7476		9648				50
11.20			7345	7345	7476	9136	9648	11631	12602	14129	50
11.30			7345 **	7345	7476	9136	9648	11631	12602	14129	50
11.40			7345	7345	7476	9136	9648	11631	12602	14129	50
11.50			7749 *	7749 **	7888	9136	10170	11631	13291	14837	50
(11.51)	29/64		7749 **	7749	7888		10170				50
11.60			7749 **	7749	7888	9677	10170	12350	13291	14837	50
11.70			7749 **	7749	7888	9677	10180	12350	13291	14837	50
11.80			7749 *	7749	7888	9677	10180	12350	13291	14837	50
11.90			8277	8277	8425	9677	10868	12350	14199	15770	50
(11.91)	15/32		8277 **	8277	8425		10868				50
12.00			8277 *	8277 *	8425	9677	10858	12350	14199	15770	50
12.10			8277 *	8277	8425	10198	10868	13025	14199	15770	50
12.20			8277 *	8277	8425	10198	10868	13025	14199	15770	50
12.30			8783 **	8783	8940	10198	11527	13025	15055	16659	50
(12.30)	31/64		8783	8783	8940		11527				50
12.40			8783 **	8783	8940	10198	11527	13025	15055	16659	50
12.50			8783 *	8783 *	8940	10198	11527	13025	15055	16659	50
12.60			8783 **	8783	8940	10941	11527	13937	15055	16906	50
(12.70)	1/2		9270 *	9270 *	9436	10941	12163	13937	15902	17764	50
12.80			9270 **	9270 **	9436	10941	12163	13937	15902	17764	50
12.90			9270 **	9270	9436	10941	12163	13937	15902	17764	50
13.00			9270 *	9270 *	9436	10941	12163	13937	15902	17764	50
(13.10)	33/64		11525	11525	11731						20
13.10			11525 **	11525	11731						20

For more details please refer our Drill Catalogue Pages 7 to 22.



HSS PARALLEL SHANK TWIST DRILLS JOBBER SERIES

IS 5101 - 1991
BS 328 (PART 1) 1986

Size		WG / LG	Price Per Ten (Rs.)								MOQ (No)
mm	inch		M2 FFD	M2 Ground	M2 Ground Gold	M2 Ground TIN-Coated	Addsonic	Addsonic TIN-Coated	M42	M42 TIN-Coated	
13.20			11525 **	11525	11731					20	
13.30			11525 **	11525	11731					20	
13.40			11525 **	11525	11731					20	
(13.49)	17/32		12270 **	12270 **	12489					20	
13.50			12270 *	12270 **	12489	14320				20	
13.60			12270	12270	12489					20	
13.70			12270 **	12270	12489					20	
13.80			12270 **	12270	12489					20	
(13.89)	35/64		13315	13315	13552					20	
13.90			13315	13315	13552					20	
14.00			13315 *	13315 **	13552	15393				20	
14.25			13315	13315	13552					20	
(14.29)	9/16		13966 **	13966	14216					20	
14.50			13966 *	13966	14216	16062				20	
(14.68)	37/64		15053	15053	15322					20	
14.75			15053	15053	15322					20	
15.00			15053 *	15053	15322	17178				20	
(15.08)	19/32		15053	15053	15322					20	
15.25			15053	15053	15322					20	
(15.48)	39/64		16315	16315	16606					20	
15.50			16315 **	16315	16606	18665				20	
15.75			16315	16315	16606					20	
(15.87)	5/8		16315	16315	16606					20	
16.00			16315 *	16315	16606	18665				20	
16.50			16843 **	16843	17143	20003				20	
(16.67)	21/32		16843	16843	17143					20	
17.00			17257 **	17257	17565	20417				20	
(17.46)	11/16		17257 **	17257	17565					20	
17.50			18322 **	18322	18649	21724				20	
18.00			18664 *	18664	18997	22074				20	
(18.26)	23/32		18664	18664	18997					20	
18.50			19553 **	19553	19902	22977				20	
19.00			19750 **	19750	20103	23179				20	
(19.05)	3/4		19750	19750	20103					20	
19.50			22212 **	22212	22608	25707				20	
(19.84)	25/32		22212	22212	22608					20	
20.00			23588 *	23588	24010	27120				20	
(20.64)	13/16		23588	23588	24010					20	
(21.43)	27/32		25088	25088	25536					20	
(22.22)	7/8		25088	25088	25536					20	

For more details please refer our Drill Catalogue Pages 7 to 22.

Set Rate :

1 mm to 13 mm in steps of 0.5 mm

25 Pices with Metal Box Rs. 8,829/-

25 Pieces set with Telescopic Box Rs. 7,754/-

1 mm to 13 mm in steps of 1 mm

13 Pieces Set Telescopic Box Rs. 4084/-



HSS PARALLEL SHANK TWIST DRILLS

IS 5100 - 1969

STUB SERIES

BS 328 (PART 1) 1986

Size		M2 Price Per Ten (Rs.)	MOQ (No.)	Size		M2 Price Per Ten (Rs.)	MOQ (No.)	Size		M2 Price Per Ten (Rs.)	MOQ (No.)
mm	inch			mm	inch			mm	inch		
3.00		486 **	200	9.20		4097	100	16.25		13998	50
(3.17)	1/8	569 *	200	9.50		4097	100	16.50		13998	50
3.20		590	200	(9.52)	3/8	4283 **	100	(16.67)	21/32	13998	50
3.50		590	200	9.80		4283	100	16.75		14277	50
(3.57)	9/64	590 **	200	(9.92)	25/64	5245	100	17.00		14277	50
3.80		818	200	10.00		5245 **	100	17.25		14535	50
(3.97)	5/32	818 *	200	10.20		5245	100	(17.46)	11/16	14535	50
4.00		818 **	200	(10.32)	13/32	5638	100	17.50		14535	50
4.20		911	200	10.50		5638	100	17.75		14732	50
(4.37)	11/64	911	200	(10.72)	27/64	6353	50	18.00		14732 **	50
4.50		1211	200	10.80		6353	50	18.25		14991	50
(4.76)	3/16	1211 **	200	11.00		6353	50	(18.26)	23/32	14991	50
4.80		1211 **	200	(11.11)	7/16	6621	50	18.50		14991	50
5.00		1282 *	200	11.20		6621	50	18.75		15260	50
(5.16)	13/64	1282 **	100	11.50		7076	50	19.00		15260	50
5.20		1282	100	(11.51)	29/64	7076	50	(19.05)	3/4	15260	50
5.50		1397	100	11.80		7076	50	19.25		15519	50
(5.56)	7/32	1397 **	100	(11.91)	15/32	7491	50	19.50		15519	50
5.80		1572	100	12.00		7491 *	50	19.75		15519	50
(5.95)	15/64	1572	100	12.20		7491	50	(19.84)	25/32	15519	50
6.00		1572 **	100	(12.3)	31/64	8142	50	20.00		15788 **	50
6.20		1758	100	12.50		8142	50	20.25		16108	50
(6.35)	1/4	1758 **	100	(12.70)	1/2	8318	50	20.50		16108	50
6.50		2163	100	12.80		8318	50	(20.64)	13/16	16108	50
(6.75)	17/64	2163 **	100	13.00		8318	50	20.75		16760	50
6.80		2163 **	100	13.20		9735	50	21.00		16760	50
7.00		2369 **	100	(13.49)	17/32	9735	50	21.25		16967	50
(7.14)	9/32	2369 **	100	13.50		10377	50	(21.43)	27/32	16967	50
7.20		2369	100	13.80		10377	50	21.50		17536	50
7.50		2462	100	14.00		11297	50	21.75		17763	50
(7.54)	19/64	2710	100	14.25		11297	50	22.00		17763	50
7.80		2710	100	(14.29)	9/16	11297	50	(22.22)	7/8	17763	50
7.94	5/16	2979 *	100	14.50		11763	50	22.25		18891	50
8.00		2979 **	100	14.75		12725	50	22.50		18891	50
8.20		2979	100	15.00		12725	50	22.75		19150	50
(8.33)	21/64	3724	100	(15.08)	19/32	12725	50	23.00		19150	50
8.50		3724 **	100	15.25		12725	50	(23.02)	29/32	19150	25
(8.73)	11/32	3880	100	15.50		13770	50	23.25		20257	25
8.80		3880	100	15.75		13770	50	23.50		20257	25
9.00		3880	100	(15.87)	5/8	13770	50	23.75		20257	25
(9.13)	23/64	4097	100	16.00		13770	50	(23.81)	15/16	20257	25

For more details please refer our Drill Catalogue Pages 23 to 26.



**HSS PARALLEL SHANK TWIST DRILLS
STUB SERIES**

**IS 5100 - 1969
BS 328 (PART 1) 1986**

Size		M2 Price Per Ten (Rs.)	MOQ (No.)	Size		M2 Price Per Ten (Rs.)	MOQ (No.)	Size		M2 Price Per Ten (Rs.)	MOQ (No.)
mm	inch			mm	inch			mm	inch		
24.00		22409	25	(28.57)	1.1/8	32424	25	(34.13)	1.11/32	52732	10
24.25		22409	25	29.00		34027	25	34.50		52732	10
24.50		22409	25	(29.37)	1.5/32	37462	25	(34.92)	1.3/8	52732	10
(24.61)	31/32	22409	25	29.50		37462	25	35.00		57988	10
24.75		24582	25	30.00		37959	25	35.50		58816	10
25.00		24582	25	(30.16)	1.3/16	37959	25	(35.72)	1.13/32	58816	10
25.25		24706	25	30.50		42718	25	36.00		58816	10
(25.40)	1	24706	25	(30.96)	1.7/32	42718	25	36.50		58816	10
25.50		27881	25	31.00		42718	25	(36.51)	1.7/16	58816	10
26.00		27881	25	31.50		43359	25	37.00		63213	10
(26.19)	1.1/32	28523	25	(31.75)	1.1/4	43359	10	(37.31)	1.15/32	64165	10
26.50		28523	25	32.00		44290	10	37.50		64165	10
(26.99)	1.1/16	28855	25	32.50		45677	10	38.00		64165	10
27.00		30406	25	(32.54)	1.9/32	45677	10	(38.10)	1.1/2	64165	10
27.50		30406	25	33.00		45677	10	38.50		71644	10
(27.78)	1.3/32	32175	25	(33.34)	1.5/16	45677	10	39.00		71644	10
28.00		32175	25	33.50		48046	10	39.50		72886	10
28.50		32424	25	34.00		48046	10	40.00		72886	10

For more details please refer our Drill Catalogue Pages 23 to 26.



**HSS PARALLEL SHANK TWIST DRILLS
LONG SERIES**

**IS 5102 - 1969
BS 328 (PART 1) 1986**

Size				Price Per Piece (Rs.)				MOQ (No.)	Size				Price Per Piece (Rs.)				MOQ (No.)
mm	Inch	FL	OAL (mm)	M2	M35	M35 with TIN-Coated	M35 TiAIN Coated		mm	Inch	FL	OAL (mm)	M2	M35	M35 with TIN-Coated	M35 TiAIN Coated	
1.00		33	56	255				50	(5.56)	7/32	91	139	476 **				50
1.10		37	60	255				50	5.80		91	139	519 **				50
(1.19)	3/64	41	65	255				50	(5.95)	15/64	91	139	519				50
1.20		41	65	255				50	6.00		91	139	519 *	647	683	713	50
1.30		41	65	255				50	6.20		97	148	590 **				50
1.40		45	70	255				50	(6.35)	1/4	97	148	538 **	679	726	773	50
1.50		45	70	255 *				50	6.50		97	148	753 **	948	995	1043	50
(1.59)	1/16	50	76	255				50	(6.75)	17/64	102	156	906				50
1.60		50	76	255 **				50	6.80		102	156	906 **				50
1.70		50	76	255				50	7.00		102	156	906 *	1144	1223	1301	50
1.80		53	80	255				50	(7.14)	9/32	102	156	906				50
1.90		53	80	255 **				50	7.20		102	156	906				50
(1.98)	5/64	56	85	255				50	7.50		102	156	906 **	1144	1223	1301	50
2.00		56	85	255 *				50	(7.54)	19/64	109	165	906				50
2.10		56	85	255 **				50	7.80		109	165	906 **				50
2.20		59	90	255 **				50	(7.94)	5/16	109	165	934	1178	1264	1350	50
2.30		59	90	324 **				50	8.00		109	165	934 *	1178	1264	1350	50
(2.38)	3/32	62	95	324				50	8.20		109	165	934 **				50
2.40		62	95	324 **				50	(8.33)	21/64	109	165	934				50
2.50		62	95	324 *				50	8.50		109	165	942 *	1177 *	1273	1360	50
2.60		62	95	324 *				50	(8.73)	11/32	115	175	989				50
2.70		66	100	324 **				50	8.80		115	175	1196				50
(2.78)	7/64	66	100	324				50	9.00		115	175	1039 *	1312	1397	1483	50
2.80		66	100	324				50	(9.13)	23/64	115	175	1175				50
2.90		66	100	324				50	9.20		115	175	1196				50
3.00		66	100	327 *	409	439	465	50	9.50		115	175	1039 **	1312	1397	1483	50
(3.17)	1/8	69	106	327 **	412	439	465	50	(9.52)	3/8	121	184	1039	1312	1397	1483	25
3.20		69	106	327 **				50	9.80		121	184	1202 **				25
3.50		73	112	327 *	412	439	465	50	(9.92)	25/64	121	184	1202				25
(3.57)	9/64	73	112	327				50	10.00		121	184	1089 **	1373	1487	1604	25
3.80		78	119	352				50	10.20		121	184	1202 **				25
(3.97)	5/32	78	119	352				50	(10.32)	13/32	121	184	1089				25
4.00		78	119	352 *	444	469	497	50	10.50		121	184	1306 **	1648	1763	1877	25
4.20		78	119	352 **				50	(10.72)	27/64	128	195	1484				25
(4.37)	11/64	82	126	352				50	10.8		128	195	1484				25
4.50		82	126	352 **	444	469	497	50	11.0		128	195	1366 **	1724	1839	1954	25
(4.76)	3/16	87	132	352 **	444	469	497	50	(11.11)	7/16	128	195	1366	1724	1839	1954	25
4.80		87	132	352				50	11.2		128	195	1588				25
5.00		87	132	414 *	523	553	582	50	11.5		128	195	1406	1773	1888	2004	25
(5.16)	13/64	87	132	414				50	(11.51)	29/64	128	195	1588				25
5.20		87	132	414 **				50	11.8		128	195	1588				25
5.50		91	139	476 **	600	629	660	50	(11.91)	15/32	134	205	1406				25

For more details please refer our Drill Catalogue Pages 27 to 30.



**HSS PARALLEL SHANK TWIST DRILLS
LONG SERIES**

**IS 5102 - 1969
BS 328 (PART 1) 1986**

Size				Price Per Piece (Rs.)				MOQ (No.)	Size				Price Per Piece (Rs.)				MOQ (No.)
mm	Inch	FL	OAL (mm)	M2	M35	M35 with TIN-Coated	M35 TiAIN Coated		mm	Inch	FL	OAL (mm)	M2	M35	M35 with TIN-Coated	M35 TiAIN Coated	
12.0		134	205	1448 **	1827	1948	2069	25	(18.65)	47/64	162	247	2941				25
12.2		134	205	1615				25	18.75		162	247	2971				25
(12.30)	31/64	134	205	1615				25	19.0		162	247	2971	3749	3996	4243	25
12.5		134	205	1448	1827	1948	2069	25	(19.05)	3/4	166	254	2971	3749	3996	4243	25
(12.70)	1/2	134	205	1448	1827	1948	2069	25	19.25		166	254	3140				25
12.8		134	205	2218				25	(19.45)	49/64	166	254	3431				25
13.0		134	205	2012 **	2536	2657	2778	25	19.5		166	254	3140	3961	4239	4516	25
(13.10)	33/64	134	205	2234				25	19.75		166	254	3140				25
13.2		134	205	2234				25	(19.84)	25/32	166	254	3140				25
(13.49)	17/32	140	214	2050				25	20.0		166	254	3332	4204	4481	4758	25
13.5		140	214	2234	2819 *	3004	3191	25	(20.24)	51/64	171	261	3538				25
13.8		140	214	2433				25	20.25		171	261	3332				25
(13.89)	35/64	140	214	2433				25	20.5		171	261	3332	4204	4481	4758	25
14.0		140	214	2234	2819	3004	3191	25	(20.64)	13/16	171	261	3332	4204	4481	4758	25
14.25		144	220	2234				25	20.75		171	261	3431				25
(14.29)	9/16	144	220	2234	2819	3004	3191	25	21.0		171	261	3431	4328	4640	4952	25
14.5		144	220	2342	2955	3157	3361	25	(21.03)	53/64	171	261	3754				25
(14.68)	37/64	144	220	2578				25	21.25		176	268	3538				25
14.75		144	220	2342				25	(21.43)	27/32	176	268	3538				25
15.0		144	220	2342	2955	3157	3361	25	21.5		176	268	3754	4735	5048	5361	25
(15.08)	19/32	149	227	2342				25	21.75		176	268	3754				25
15.25		149	227	2433				25	(21.83)	55/64	176	268	4014				25
(15.48)	39/64	149	227	2657				25	22.0		176	268	3754	4735	5048	5361	25
15.5		149	227	2433	3069	3272	3474	25	(22.22)	7/8	176	268	3754	4735	5048	5361	25
15.75		149	227	2433				25	22.25		176	268	4063				25
(15.87)	5/8	149	227	2433	3069	3272	3474	25	22.5		180	275	4063	5126	5509	5892	25
16.0		149	227	2472	3118	3320	3524	25	(22.62)	57/64	180	275	4341				25
16.25		154	235	2472				25	22.75		180	275	4156				25
(16.27)	41/64	154	235	2748				25	23.0		180	275	4156	5244	5626	6010	25
16.5		154	235	2517	3175	3390	3605	25	(23.02)	29/32	180	275	4156				25
(16.67)	21/32	154	235	2517				25	23.25		180	275	4212				25
16.75		154	235	2578				25	(23.42)	59/64	180	275	4963				25
17.0		154	235	2578	3252	3466	3681	25	23.5		180	275	4610	5815	6198	6582	25
(17.07)	43/64	158	241	2801				25	23.75		185	282	4610				25
17.25		158	241	2578				25	(23.81)	15/16	185	282	4610	5815	6248	6682	25
(17.46)	11/16	158	241	2578	3252	3466	3681	25	24.0		185	282	4806	6063	6495	6928	25
17.5		158	241	2748	3468	3681	3896	25	(24.21)	61/64	185	282	5245				25
17.75		158	241	2748				25	24.25		185	282	4806				25
(17.86)	45/64	158	241	3040				25	24.5		185	282	4806	6063	6495	6928	25
18.0		158	241	2801	3535	3750	3965	25	(24.61)	31/32	185	282	4806				25
18.25		162	247	2801				25	24.75		185	282	5152				25
(18.26)	23/32	162	247	2801				25	25.0	63/64	185	282	5152	6499	6933	7366	25
18.5		162	247	2918	3680	3929	4176	25	(25.40)	1	190	290	5219	6584	7192	7799	25

For more details please refer our Drill Catalogue Pages 27 to 30.



**HSS PARALLEL SHANK TWIST DRILLS
EXTRA LONG**

**FL and OAL as per Addison Standard
All other specifications as per IS 7823 - 2005**

Size		M2 Price Per Piece (Rs.)							MOQ (No.)
		Overall Length in millimeter							
mm	inch	150	175	200	225	250	300	350	
3	1/8	941 **	1152	1304	1551	1828	2281		50
3.5		916 **	1067	1374	1708	2055	2622		50
4	5/32	916 **	1067	1374 **	1708	2055	2622	3615	50
4.5		940	1152	1374	1708	2055	2699	3615	50
5	3/16	939 *	1199 **	1488 **	1827	2158 **	2860 **	3793	50
5.5	7/32	1027	1282	1723	1948	2298	3040	3954	25
6		1027 **	1338	1636 *	1982	2377 *	3113 **	4103 **	25
6.5	1/4	–		1676	–	2423	3261	4104	25
7		–		1859 **	–	2666	3685 **	4607	25
7.5	9/32	–		1893	–	2830 **	3754	4607	25
8	5/16	–		1985 *	–	2950 *	3846 *	4714 **	25
8.5	11/32	–		2049 *	–	3011 **	3916 **	5036	25
9		–		2049 **	–	3011 **	3917	5036	25
9.5	3/8	–		2158	–	3030	4002	5197	25
10		–		2246 **	–	3113 **	4180 **	5431	25
10.5	13/32	–		2324	–	3325	4338	5711	25
11		–		–	–	3441	4470	5892	25
11.5	7/16	–		–	–	3441	4470	5892	25
12	15/32	–		–	–	3612 **	4740 **	6046	25
12.5	1/2	–		–	–	3724	4893	6448	25

For more details please refer our Drill Catalogue Pages 31 and 32.



HSS TAPER SHANK TWIST DRILLS

IS 5103 - 1969
BS 328 (PART 1) 1986

Size		Shank	Price Per Piece (Rs.)					MOQ (No.)
mm	inch		M2	M35	M42	M2 With Crank Shaft Design	M35 With Crank Shaft Design	
3.00		MT1	417 **			562	843	100
(3.17)	1/8	MT1	417			588	882	100
3.20		MT1	435			588	882	100
3.50		MT1	417			562	843	100
(3.57)	9/64	MT1	435			588	882	100
3.80		MT1	435			588	882	100
(3.97)	5/32	MT1	417			562	843	100
4.00		MT1	417			562	843	100
4.20		MT1	561 **			757	1134	100
(4.37)	11/64	MT1	561			757	1134	100
4.50		MT1	561 **			757	1134	100
(4.76)	3/16	MT1	561			779	1167	100
4.80		MT1	577			779	1167	100
5.00		MT1	561 *			757	1134	100
(5.16)	13/64	MT1	577			779	1167	100
5.20		MT1	577 **			779	1167	100
5.50		MT1	561 **			757	1134	100
(5.56)	7/32	MT1	561			779	1167	100
5.80		MT1	577			779	1167	100
(5.95)	15/64	MT1	577			779	1167	100
6.00		MT1	561 **			757	1134	100
6.20		MT1	646			873	1308	100
(6.35)	1/4	MT1	639			941	1411	100
6.50		MT1	697			941	1411	100
(6.75)	17/64	MT1	705 **			952	1431	100
6.80		MT1	705 *			952	1431	100
7.00		MT1	697			941	1411	100
(7.14)	9/32	MT1	697 **			952	1431	100
7.20		MT1	705			952	1431	100
7.50		MT1	697 **			941	1411	100
(7.54)	19/64	MT1	705			952	1431	100
7.80		MT1	705			952	1431	100
(7.94)	5/16	MT1	697			941	1411	100
8.00		MT1	697 *			941	1411	100
8.20		MT1	851 **			1149	1724	100
(8.33)	21/64	MT1	896			1050	1573	100
8.50		MT1	777 *			1050	1573	100
(8.73)	11/32	MT1	851			1263	1894	100

For more details please refer our Drill Catalogue Pages 34 to 39.



HSS TAPER SHANK TWIST DRILLS

IS 5103 - 1969
BS 328 (PART 1) 1986

Size		Shank	Price Per Piece (Rs.)					MOQ (No.)
mm	inch		M2	M35	M42	M2 With Crank Shaft Design	M35 With Crank Shaft Design	
8.80		MT1	936 **			1263	1894	100
9.00		MT1	851 **			1149	1724	100
(9.13)	23/64	MT1	936			1263	1894	100
9.20		MT1	936 **			1263	1894	100
9.50		MT1	851 **			1149	1724	100
(9.52)	3/8	MT1	851			1149	1724	100
9.80		MT1	1004 **			1355	2032	100
(9.92)	25/64	MT1	1004			1226	1840	100
10.00		MT1	885 *	1105	1327	1194	1792	50
10.20		MT1	993 *			1342	2014	50
(10.32)	13/32	MT1	961 **			1592	2387	50
10.50		MT1	1178 *	1473	1767	1592	2387	50
(10.72)	27/64	MT1	1222			1649	2473	50
10.80		MT1	1222 **			1649	2473	50
11.00		MT1	1222 *	1527	1832	1649	2473	50
(11.11)	7/16	MT1	1222 **	1527	1832	1704	2556	50
11.20		MT1	1262			1704	2556	50
11.50		MT1	1262 *	1578	1893	1704	2556	50
(11.51)	29/64	MT1	1262			1704	2556	50
11.80		MT1	1262			1704	2556	50
(11.91)	15/32	MT1	1262 **			1721	2560	50
12.00		MT1	1275 *	1594	1913	1721	2582	50
12.20		MT1	1275 **			1721	2582	50
(12.30)	31/64	MT1	1275 **			1721	2582	50
12.50		MT1	1275 *	1594	1913	1721	2582	50
(12.70)	1/2	MT1	1275 *	1594	1913	2392	3587	50
12.80		MT1	1772			2392	3587	50
13.00		MT1	1772 *	2214	2657	2392	3587	50
(13.10)	33/64	MT1	1849 **			2496	3745	50
13.20		MT1	1849 **			2496	3745	50
(13.49)	17/32	MT1	1849 *			2673	4012	50
13.50		MT1	1980 *	2476	2971	2673	4012	50
13.80		MT1	1980 *			2673	4012	50
(13.89)	35/64	MT1	1980 **			2673	4012	50
14.00		MT1	1980 *	2476 **	2971	2673	4012	50
14.25		MT2	2128 *			2872	4310	50
(14.29)	9/16	MT2	2128 *	2660	3192	2872	4310	50
14.50		MT2	2212 *			2986	4479	50

For more details please refer our Drill Catalogue Pages 34 to 39.



HSS TAPER SHANK TWIST DRILLS

**IS 5103 - 1969
BS 328 (PART 1) 1986**

Size		Shank	Price Per Piece (Rs.)					MOQ (No.)
mm	inch		M2	M35	M42	M2 With Crank Shaft Design	M35 With Crank Shaft Design	
(14.68)	37/64	MT2	2212			2986	4479	50
14.75		MT2	2212 *			2986	4479	50
15.00		MT2	2212 **	2765	3319	2986	4479	50
(15.08)	19/32	MT2	2212 *			2986	4479	50
15.25		MT2	2242 *			3027	4542	50
(15.48)	39/64	MT2	2242			3027	4542	50
15.50		MT2	2242 *	2803	3364	3027	4542	50
15.75		MT2	2242 **			3027	4542	50
(15.87)	5/8	MT2	2242 *	2803	3364	3118	4677	50
16.00		MT2	2309 *	2887	3465	3118	4677	50
16.25		MT2	2309 *			3118	4677	50
(16.27)	41/64	MT2	2309 **			3118	4677	50
16.50		MT2	2454 *	3067	3680	3312	4968	50
(16.67)	21/32	MT2	2454 **			3312	4968	50
16.75		MT2	2454 **			3312	4968	50
17.00		MT2	2454 *	3067	3680	3312	4968	50
(17.07)	43/64	MT2	2494			3312	4968	50
17.25		MT2	2494 *			3367	5050	50
(17.46)	11/16	MT2	2494 *	3118	3741	3493	5242	50
17.5		MT2	2588 *	3236	3883	3493	5242	50
17.75		MT2	2625 **			3545	5318	50
(17.86)	45/64	MT2	2727			3683	5523	50
18.00		MT2	2727 *	3410	4091	3683	5523	50
18.25		MT2	2727 *			3683	5523	50
(18.26)	23/32	MT2	2727 **			3683	5523	50
18.50		MT2	2727 *	3410	4091	3683	5523	50
(18.65)	47/64	MT2	2761 **			3726	5590	50
18.75		MT2	2761 **			3726	5590	50
19.00		MT2	2761 *	3451	4141	3726	5590	50
(19.05)	3/4	MT2	2761 *	3451	4141	3726	5590	50
19.25		MT2	2900 *			3916	5872	50
(19.45)	49/64	MT2	2900			3916	5872	50
19.50		MT2	2900 *	3625	4350	3916	5872	50
19.75		MT2	2900 **			3916	5872	50
(19.84)	25/32	MT2	2900			4209	6313	50
20.00		MT2	3118 *	3898	4676	4209	6313	50

For more details please refer our Drill Catalogue Pages 34 to 39.



HSS TAPER SHANK TWIST DRILLS

IS 5103 - 1969
BS 328 (PART 1) 1986

Size		Shank	Price Per Piece (Rs.)			MOQ (No.)
mm	inch		M2	M35	M42	
(20.24)	51/64	MT2	3155			25
20.25		MT2	3155 *			25
20.50		MT2	3155 *	3944	4733	25
(20.64)	13/16	MT2	3155 **	3944	4733	25
20.75		MT2	3291 **			25
21.00		MT2	3291 *	4114	4936	25
(21.03)	53/64	MT2	3373			25
21.25		MT2	3373 **			25
(21.43)	27/32	MT2	3373 **			25
21.50		MT2	3478 *	4347	5216	25
21.75		MT2	3478			25
(21.83)	55/64	MT2	3541			25
22.00		MT2	3541 *	4426	5311	25
(22.22)	7/8	MT2	3541 *	4426	5311	25
22.25		MT2	3858			25
22.50		MT2	3858 *	4824	5788	25
(22.62)	57/64	MT2	3933			25
22.75		MT2	3933			25
23.00		MT2	3933 *	4917	5900	25
(23.02)	29/32	MT3	4126			25
23.25		MT3	4567 **			25
(23.42)	59/64	MT3	4684			25
23.50		MT3	4684	5854	7025	25
23.75		MT3	4684			25
(23.81)	15/16	MT3	4684	5854	7025	25
24.00		MT3	4822 *	6027	7232	25
(24.21)	61/64	MT3	4903			25
24.25		MT3	4903 **			25
24.50		MT3	4903 *	6129	7354	25
(24.61)	31/32	MT3	4903			25
24.75		MT3	5123 **			25
25.00		MT3	5123 *	6403	7684	25
(25.00)	63/64	MT3	5123			25
25.25		MT3	5191			25
(25.40)	1	MT3	5191 *	6489	7786	25
25.50		MT3	5643 *	7053	8464	25
25.75		MT3	5643			25
(25.80)	1.1/64	MT3	5704			25
26.00		MT3	5704 *	7130	8556	25
(26.19)	1.1/32	MT3	5704			25
26.25		MT3	6111 **			25
26.50		MT3	6111 *	7638	9166	25
(26.59)	1.3/64	MT3	6252			25
26.75		MT3	6252			25
(26.99)	1.1/16	MT3	6252	7815	9378	25
27.00		MT3	6456 *	8070	9684	25
27.25		MT3	6456			25

For more details please refer our Drill Catalogue Pages 34 to 39.



HSS TAPER SHANK TWIST DRILLS

IS 5103 - 1969
BS 328 (PART 1) 1986

Size		Shank	Price Per Piece (Rs.)			MOQ (No.)
mm	inch		M2	M35	M42	
(27.38)	1.5/64	MT3	6477			25
27.50		MT3	6477 *	8098	9717	25
27.75		MT3	6477 **			25
(27.78)	1.3/32	MT3	6477			25
28.00		MT3	7082 *	8852	10623	25
(28.18)	1.7/64	MT3	7103 *			25
28.25		MT3	7103			25
28.50		MT3	7103 *	8878	10653	25
(28.57)	1.1/8	MT3	7103 **	8878	10653	25
28.75		MT3	7318			25
(28.97)	1.9/64	MT3	7437			25
29.00		MT3	7437 *	9296	11156	25
29.25		MT3	7437			25
(29.37)	1.5/32	MT3	7437			25
29.50		MT3	7466	9332	11199	25
29.75		MT3	7466			25
(29.77)	1.11/64	MT3	7622			25
30.00		MT3	7622 *	9527	11432	25
(30.16)	1.3/16	MT3	8048 **	10061	12074	25
30.25		MT3	8667			25
30.50		MT3	8667 *	10834	13001	25
(30.56)	1.13/64	MT3	8807			25
30.75		MT3	8807			25
(30.96)	1.7/32	MT3	8807			25
31.00		MT3	9801 *	12251	14701	25
31.25		MT3	9801			25
(31.35)	1.15/64	MT3	10229			25
31.50		MT3	10229 *	12786	15343	25
(31.75)	1.1/4	MT3	10229 *	12786	15343	25
31.75		MT3	10229 *			25
32.00		MT4	11199 *			25
(32.15)	1.17/64	MT4	11199			25
32.50		MT4	11199 *			25
(32.54)	1.9/32	MT4	11199			25
(32.94)	1.19/64	MT4	11467			25
33.00		MT4	11467 *			25
(33.34)	1.5/16	MT4	11467 **			25
33.50		MT4	11861 **			25
(33.73)	1.21/64	MT4	12083			25
34.00		MT4	12083 *			25
(34.13)	1.11/32	MT4	12597			25
34.50		MT4	13235 **			25
(34.53)	1.23/64	MT4	13356			25
(34.92)	1.3/8	MT4	13356			25
35.00		MT4	13356 *			25
(35.32)	1.25/64	MT4	14156			25
35.50		MT4	14156 **			25

For more details please refer our Drill Catalogue Pages 34 to 39.



HSS TAPER SHANK TWIST DRILLS

**IS 5103 - 1969
BS 328 (PART 1) 1986**

Size		Shank	Price Per Piece (Rs.) M2	MOQ (No.)	Size		Shank	Price Per Piece (Rs.) M2	MOQ (No.)
mm	inch				mm	inch			
(35.72)	1.13/32	MT4	14156	15	(46.83)	1.27/32	MT4	24716	10
36.00		MT4	14363 *	15	47.00		MT4	24716 **	10
(36.12)	1.27/64	MT4	14659	10	(47.23)	1.55/64	MT4	25232	10
36.50		MT4	14659 **	10	47.50		MT4	25232	10
(36.51)	1.7/16	MT4	14659	10	(47.62)	1.7/8	MT4	25232	10
(36.91)	1.29/64	MT4	14659	10	48.00		MT4	27514 *	10
37.00		MT4	15020 *	10	(48.02)	1.57/64	MT4	27514	10
(37.31)	1.15/32	MT4	15020	10	(48.42)	1.29/32	MT4	27514	10
37.50		MT4	15996 **	10	48.50		MT4	27717	10
(37.70)	1.31/64	MT4	16247	10	(48.82)	1.59/64	MT4	27717	10
38.00		MT4	16247 *	10	49.00		MT4	27717 **	10
(38.10)	1.1/2	MT4	16247	10	(49.21)	1.15/16	MT4	27717	10
(38.50)	1.33/64	MT4	16753	10	49.50		MT4	28015 **	10
38.50		MT4	16753	10	(49.61)	1.61/64	MT4	28015	10
(38.89)	1.17/32	MT4	16753	10	50.00		MT4	28015 *	10
39.00		MT4	17742 *	10	(50.01)	1.31/32	MT4	28236	10
(39.29)	1.35/64	MT4	17742	10	(50.40)	1.63/64	MT4	29504	10
39.50		MT4	17742	10	50.50		MT4	29504	10
(39.69)	1.9/16	MT4	17742	10	(50.80)	2	MT4	29504 **	10
40.00		MT4	18199 *	10	51.00		MT5	40058 **	5
(40.08)	1.37/64	MT4	18499	10	51.50		MT5	40058 **	5
(40.48)	1.19/32	MT4	18499	10	(51.59)	2.1/32	MT5	40058	5
40.50		MT4	19238	10	52.00		MT5	40058 *	5
(40.88)	1.39/64	MT4	19238	10	(52.39)	2.1/16	MT5	40058	5
41.00		MT4	19238 *	10	52.50		MT5	52135	5
(41.27)	1.5/8	MT4	19238 **	10	53.00		MT5	52135	5
41.50		MT4	19994	10	(53.18)	2.3/32	MT5	52135	5
(41.67)	1.41/64	MT4	19994	10	53.50		MT5	52135	5
42.00		MT4	19994 *	10	(53.97)	2.1/8	MT5	52135	5
(42.07)	1.21/32	MT4	19994	10	54.00		MT5	52135 **	5
(42.47)	1.43/64	MT4	20505	10	54.50		MT5	54767	5
42.50		MT4	20505 **	10	(54.77)	2.5/32	MT5	54767	5
(42.86)	1.11/16	MT4	20756	10	55.00		MT5	54767 *	5
43.00		MT4	21244 **	10	55.50		MT5	54767	5
(43.26)	1.45/64	MT4	21244	10	(55.56)	2.3/16	MT5	54767	5
43.50		MT4	21244 **	10	56.00		MT5	57068 **	5
(43.66)	1.23/32	MT4	21244	10	(56.36)	2.7/32	MT5	57068	5
44.00		MT4	21995 *	10	56.50		MT5	57068 **	5
(44.05)	1.47/64	MT4	21995	10	57.00		MT5	57068 **	5
(44.45)	1.3/4	MT4	21995	10	(57.15)	2.1/4	MT5	57068	5
44.50		MT4	21995	10	57.50		MT5	62281	5
(44.85)	1.49/64	MT4	22510	10	(57.94)	2.9/32	MT5	62281	5
45.00		MT4	22510 *	10	58.00		MT5	62281 **	5
(45.24)	1.25/32	MT4	22510	10	58.50		MT5	62281	5
45.50		MT4	23529	10	(58.74)	2.5/16	MT5	62281	5
(45.64)	1.51/64	MT4	23529	10	59.00		MT5	63470	5
46.00		MT4	23529	10	59.50		MT5	63470	5
(46.04)	1.13/16	MT4	23529	10	(59.53)	2.11/32	MT5	63470	5
(46.43)	1.53/64	MT4	24716	10	60.00		MT5	63470	5
46.50		MT4	24716	10	(60.32)	2.3/8	MT5	63470 *	5

For more details please refer our Drill Catalogue Pages 34 to 39.



HSS TAPER SHANK TWIST DRILLS

**IS 5103 - 1969
BS 328 (PART 1) 1986**

Size		Shank	M2 Price Per Piece (Rs.)	MOQ (No.)	Size		Shank	M2 Price Per Piece (Rs.)	MOQ (No.)
mm	inch				mm	inch			
60.50		MT5	67464	5	(76.99)	3.1/32	MT6	147536	2
61.00		MT5	67464 **	5	77.00		MT6	147536	2
(61.12)	2.13/32	MT5	67464	5	(77.79)	3.1/16	MT6	147536	2
61.50		MT5	67464	5	78.00		MT6	147536	2
(61.91)	2.7/16	MT5	67464	5	(78.58)	3.3/32	MT6	150479	2
62.00		MT5	67464 **	5	79.00		MT6	150479	2
62.50		MT5	67464	5	(79.37)	3.1/8	MT6	154473	2
(62.71)	2.15/32	MT5	68600	5	80.00		MT6	154473	2
63.00		MT5	68600 **	5	(80.17)	3.5/32	MT6	165222	2
(63.50)	2.1/2	MT5	68600 **	5	(80.96)	3.3/16	MT6	165222	2
64.00		MT5	75820	5	81.00		MT6	165222	2
(64.29)	2.17/32	MT5	75820	5	(81.76)	3.7/32	MT6	169518	2
64.50		MT5	75820	5	82.00		MT6	169518	2
65.00		MT5	75820 **	5	(82.55)	3.1/4	MT6	169518	2
(65.09)	2.9/16	MT5	75820	5	83.00		MT6	173019	2
65.50		MT5	76384	5	(83.34)	3.9/32	MT6	173019	2
(65.88)	2.19/32	MT5	76384	5	84.00		MT6	173019	2
66.00		MT5	76384	5	(84.14)	3.5/16	MT6	175895	2
66.50		MT5	76384	5	(84.93)	3.11/32	MT6	175895	2
(66.67)	2.5/8	MT5	76384 **	5	85.00		MT6	175895	2
67.00		MT5	78247	5	(85.72)	3.3/8	MT6	200636	2
(67.47)	2.21/32	MT5	83993	3	86.00		MT6	200636	2
67.50		MT5	83993	3	(86.52)	3.13/32	MT6	200636	2
68.00		MT5	83993	3	87.00		MT6	200636	2
(68.26)	2.11/16	MT5	83993	3	(87.31)	3.7/16	MT6	204830	2
68.50		MT5	90107	3	88.00		MT6	204830	2
69.00		MT5	91041	3	(88.11)	3.15/32	MT6	204830	2
(69.05)	2.23/32	MT5	91041	3	(88.90)	3.1/2	MT6	204830	2
69.50		MT5	91041	3	89.00		MT6	204830	2
(69.85)	2.3/4	MT5	91041	3	90.00		MT6	209008	2
70.00		MT5	91041 *	3	(90.49)	3.9/16	MT6	216803	2
70.50		MT5	97133	3	91.00		MT6	216803	2
(70.64)	2.25/32	MT5	98189	3	92.00		MT6	216803	2
71.00		MT5	98189	3	(92.07)	3.5/8	MT6	223881	2
(71.44)	2.13/16	MT5	98189	3	93.00		MT6	223881	2
71.50		MT5	98189	3	(93.66)	3.11/16	MT6	232348	2
72.00		MT5	100088	3	94.00		MT6	232348	2
(72.23)	2.27/32	MT5	100088	3	95.00		MT6	232348	2
72.50		MT5	100088	3	(95.25)	3.3/4	MT6	232348	2
73.00		MT5	100088	3	96.00		MT6	240128	2
(73.02)	2.7/8	MT5	100088	3	(96.84)	3.13/16	MT6	240128	2
73.50		MT5	105404	3	97.00		MT6	240128	2
(73.82)	2.29/32	MT5	106519	3	98.00		MT6	244375	2
74.00		MT5	106519 **	3	(98.42)	3.7/8	MT6	247864	2
74.50		MT5	106519	3	99.00		MT6	247864	2
(74.61)	2.15/16	MT5	106519	3	100.00		MT6	247864	2
75.00		MT5	107845 **	3	(100.01)	3.15/16	MT6	252110	2
(75.41)	2.31/32	MT5	107845	3	101.00		MT6	251123	2
75.50		MT5	107845	3	(101.60)	4	MT6	252110	2
76.00		MT5	107845	3	102.00		MT6	252110	2
(76.20)	3	MT5	107845	3					

For more details please refer our Drill Catalogue Pages 34 to 39.



**HSS TAPER SHANK TWIST DRILLS
LONG SERIES**

**IS 8305 - 1976
(Type N)**

mm	Inch	FL (mm)	OAL (mm)	Shank	M2 Price Per Piece (Rs.)	MOQ (No.)	mm	Inch	FL (mm)	OAL (mm)	Shank	M2 Price Per Piece (Rs.)	MOQ (No.)
5	(3/16)	74	155	MT1	1234	25	14		142	223	MT1	3593 **	25
5.2		74	155	MT1	1234	25	14.25		147	245	MT2	4484	25
5.5	(7/32)	80	161	MT1	1374	25	14.5	(9/16)	147	245	MT2	4484	25
5.8		80	161	MT1	1374	25	14.75		147	245	MT2	4583	25
6		80	161	MT1	1374	25	15		147	245	MT2	4583	25
6.2		86	167	MT1	1530	25	15.25		153	251	MT2	4689	25
6.5	(1/4)	86	167	MT1	1530	25	15.5		153	251	MT2	4689	25
6.8		93	174	MT1	1650	25	15.75		153	251	MT2	4808	25
7		93	174	MT1	1650	25	16	(5/8)	153	251	MT2	4808	25
7.2		93	174	MT1	1704	25	16.25		159	257	MT2	4893 **	25
7.5		93	174	MT1	1704	25	16.5		159	257	MT2	4893	25
7.8		100	181	MT1	1800	25	16.75		159	257	MT2	4997	25
8	(5/16)	100	181	MT1	1800 **	25	17		159	257	MT2	4997	25
8.2		100	181	MT1	1838	25	17.25		165	263	MT2	5426	25
8.5		100	181	MT1	1838 **	25	17.5	(11/16)	165	263	MT2	5426	25
8.8		107	188	MT1	1991	25	17.75		165	263	MT2	5439	25
9		107	188	MT1	1991 **	25	18		165	263	MT2	5439 **	25
9.2		107	188	MT1	2040	25	18.25		171	269	MT2	5525	25
9.5	(3/8)	107	188	MT1	2040	25	18.5		171	269	MT2	5525	25
9.8		116	197	MT1	2315	25	18.75		171	269	MT2	5613	25
10		116	197	MT1	2315 **	25	19	(3/4)	171	269	MT2	5613	25
10.2		116	197	MT1	2381	25	19.25		177	275	MT2	5767	25
10.5		116	197	MT1	2381 **	25	19.5		177	275	MT2	5767	25
10.8		125	206	MT1	2433	25	19.75		177	275	MT2	5863	25
11		125	206	MT1	2433	25	20		177	275	MT2	5863	25
11.2		125	206	MT1	2522	25	20.25		184	282	MT2	5961	25
11.5	(7/16)	125	206	MT1	2522	25	20.5		184	282	MT2	5961	25
11.8		125	206	MT1	2522	25	20.75		184	282	MT2	6070	25
12		134	215	MT1	2992	25	21	(13/16)	184	282	MT2	6070	25
12.2		134	215	MT1	3153	25	21.25		191	289	MT2	7052	25
12.5	(1/2)	134	215	MT1	3153	25	21.5		191	289	MT2	7052	25
12.8		134	215	MT1	3153	25	21.75		191	289	MT2	7193	25
13		134	215	MT1	3153	25	22		191	289	MT2	7193	25
13.2		134	215	MT1	3153	25	22.25		191	289	MT2	7682	25
13.5		142	223	MT1	3454	25	22.5	(7/8)	198	296	MT2	7682	25
13.8		142	223	MT1	3593	25	22.75		198	296	MT2	8051	25

For more details please refer our Drill Catalogue Pages 42 to 44.



**HSS TAPER SHANK TWIST DRILLS
LONG SERIES**

**IS 8305 - 1976
(Type N)**

mm	Inch	FL (mm)	OAL (mm)	Shank	M2 Price Per Piece (Rs.)	MOQ (No.)	mm	Inch	FL (mm)	OAL (mm)	Shank	M2 Price Per Piece (Rs.)	MOQ (No.)
23		198	296	MT2	8051	25	32.5		248	397	MT4	20769	10
23.25		198	319	MT3	9836	25	33	(1.5/16)	248	397	MT4	20769	10
23.5		198	319	MT3	9836	25	33.5		248	397	MT4	21674	10
23.75		206	327	MT3	9836	25	34		257	406	MT4	21674	10
24	(15/16)	206	327	MT3	9836	25	34.5		257	406	MT4	22621	10
24.25		206	327	MT3	10266	25	35	(1.3/8)	257	406	MT4	22621	10
24.5		206	327	MT3	10266	25	35.5		257	406	MT4	22621	10
24.75		206	327	MT3	10640	25	36		267	416	MT4	24789	10
25		206	327	MT3	10640 **	25	36.5		267	416	MT4	25716	10
25.25		214	335	MT3	10640	25	37	(1.7/16)	267	416	MT4	25716	10
25.5	(1)	214	335	MT3	10640	25	37.5		267	416	MT4	27849	10
25.75		214	335	MT3	11066	25	38	(1.1/2)	277	426	MT4	27849	10
26		214	335	MT3	11066 **	25	38.5		277	426	MT4	28764	10
26.25		214	335	MT3	11386	25	39		277	426	MT4	28764	10
26.5		214	335	MT3	11386 **	25	39.5		277	426	MT4	29903	10
26.75		222	343	MT3	13493	25	40		277	426	MT4	29903	10
27	(1.1/16)	222	343	MT3	13493	25	40.5		287	436	MT4	29903	10
27.25		222	343	MT3	13924	25	41	(1.5/8)	287	436	MT4	29903	10
27.5		222	343	MT3	13924	25	41.5		287	436	MT4	31432	10
27.75		222	343	MT3	14352	25	42		287	436	MT4	31432	10
28		222	343	MT3	14352	25	42.5		287	436	MT4	33254	10
28.25		230	351	MT3	14814	25	43		298	447	MT4	35724	10
28.5	(1.1/8)	230	351	MT3	14814	25	43.5		298	447	MT4	37659	10
28.75		230	351	MT3	15230	25	44		298	447	MT4	37659	10
29		230	351	MT3	15230	25	44.5		298	447	MT4	39208	10
29.25		230	351	MT3	15651	25	45	(1.3/4)	298	447	MT4	39208	10
29.5		230	351	MT3	15651	25	45.5		310	459	MT4	41338	10
29.75		230	351	MT3	16094	25	46	(1.13/16)	310	459	MT4	41338	10
30	(1.3/16)	230	351	MT3	16094	25	46.5		310	459	MT4	43019	10
30.25		239	360	MT3	16523	25	47		310	459	MT4	43019	10
30.5		239	360	MT3	16523	25	47.5		310	459	MT4	45193	10
30.75		239	360	MT3	16523	25	48	(1.7/8)	321	470	MT4	45193	10
31		239	360	MT3	16523	25	48.5		321	470	MT4	49495	10
31.25		239	360	MT3	16642	25	49	(1.15/16)	321	470	MT4	49495	10
31.5		239	360	MT3	16642	25	49.5		321	470	MT4	49495	10
31.75	(1.1/4)	248	369	MT3	17285	25	50		321	470	MT4	52046	10
32		248	397	MT4	19909	10							

For more details please refer our Drill Catalogue Pages 42 to 44.



**HSS TAPER SHANK TWIST DRILLS
EXTRA LONG**

**FL and OAL as per Addison Standard
All other specifications as per IS 7822 - 2005**

Size		M2 Price Per Piece (Rs.)										MOQ (No.)
		Overall Length in millimetre										
mm	inch	200	225	250	275	300	315	325	350	375	400	
3	1/8	1735	2040	2259	2570	2913		3364				25
3.5		1784	2040	2322	2633	2990		3456				25
4	5/32	1784	2040	2322	2633	2990		3456				25
4.5		1828	2097	2322	2696	3170		3636				25
5	3/16	1828	2097	2322	2696	3170		3636				25
5.5	7/32	1828	2110	2435 **	2855	3237		3733				25
6		1839 **	2110	2461	2855	3237 **	3538	3733				25
6.5	1/4	1865	2178	2473	2999	3364	3649	3844				25
7		2032 **	2288	2569	3056	3521	3873	4035				25
7.5		2055	2345	2643	3112	3613	3958	4113				25
8	5/16	2147 **	2397	2748 **	3224	3705 **	4022	4227				25
8.5		2218 *	2489 **	2802 **	3281	3773 **	4070	4344				25
9		2253 **	2524	2869 **	3298	3802	4178	4380				25
9.5	3/8	2309	2555	2869 **	3389	3898 **	4234	4400				25
10		2315 **	2620 **	2955 **	3449	3973	4338	4523	5061	5706	6347 **	25
10.5		2381	2718 **	3153 **	3645	4178	4524	4751	5432	6103	6878	25
11		2434	2802	3183	3705	4254	4672	4872	5531	6201	6934	25
11.5	7/16	2522	2860	3264	3795	4359	4751	4963	5680	6365	7115	25
12			2992 **	3407	3946	4523	4935	5184	5863	6509	7301 **	25
12.5	1/2		3153	3521	4089	4661	5094	5328	6139	6929	7829	25
13				4178 **	4785	5432	5897	6201	7057	7921	8898	25
13.5				4311	4881	5580	6041	6315	7192	8119	9122	25
14				4455 **	5026	5680	6163	6415	7333 **	8285	9297	25

For more details please refer our Drill Catalogue Pages 46 to 51.



**HSS TAPER SHANK TWIST DRILLS
EXTRA LONG**

**FL and OAL as per Addison Standard
All other specifications as per IS 7822 - 2005**

Size		M2 Price Per Piece (Rs.)										MOQ (No.)
		Overall Length in millimetre										
mm	inch	200	225	250	275	300	315	325	350	375	400	
3	1/8	1735	2040	2259	2570	2913		3364				25
3.5		1784	2040	2322	2633	2990		3456				25
4	5/32	1784	2040	2322	2633	2990		3456				25
4.5		1828	2097	2322	2696	3170		3636				25
5	3/16	1828	2097	2322	2696	3170		3636				25
5.5	7/32	1828	2110	2435 **	2855	3237		3733				25
6		1839 **	2110	2461	2855	3237 **	3538	3733				25
6.5	1/4	1865	2178	2473	2999	3364	3649	3844				25
7		2032 **	2288	2569	3056	3521	3873	4035				25
7.5		2055	2345	2643	3112	3613	3958	4113				25
8	5/16	2147 **	2397	2748 **	3224	3705 **	4022	4227				25
8.5		2218 *	2489 **	2802 **	3281	3773 **	4070	4344				25
9		2253 **	2524	2869 **	3298	3802	4178	4380				25
9.5	3/8	2309	2555	2869 **	3389	3898 **	4234	4400				25
10		2315 **	2620 **	2955 **	3449	3973	4338	4523	5061	5706	6347 **	25
10.5		2381	2718 **	3153 **	3645	4178	4524	4751	5432	6103	6878	25
11		2434	2802	3183	3705	4254	4672	4872	5531	6201	6934	25
11.5	7/16	2522	2860	3264	3795	4359	4751	4963	5680	6365	7115	25
12			2992 **	3407	3946	4523	4935	5184	5863	6509	7301 **	25
12.5	1/2		3153	3521	4089	4661	5094	5328	6139	6929	7829	25
13				4178 **	4785	5432	5897	6201	7057	7921	8898	25
13.5				4311	4881	5580	6041	6315	7192	8119	9122	25
14				4455 **	5026	5680	6163	6415	7333 **	8285	9297	25

For more details please refer our Drill Catalogue Pages 46 to 51.



**HSS TAPER SHANK TWIST DRILLS
EXTRA LONG**

**FL and OAL as per Addison Standard
All other specifications as per IS 7822 - 2005**

Size		M2 Price Per Piece (Rs.)						MOQ (No.)
		Overall Length in millimetre						
mm	inch	250	275	300	315	325	350	
14.5	9/16	4484	5095	5764	6196	6509	7474	25
15		4583	5207	5904 **	6328 **	6667	7623 **	25
15.5		4689	5327	5961 **	6451	6759	7738	25
16	5/8	4808	5416	6080	6543	6881	7850 **	25
16.5		4893	5488	6196	6667	6989	7997	25
17		4997	5621	6261 **	6748	7082	8119	25
17.5	11/16	—	—	6415 **	6878	7220	8275 **	25
18		—	—	6509 **	7031	7333	8408 **	25
18.5		—	—	6612	7115	7466	8482	25
19	3/4	—	—	6731 **	7327	7577	8621 **	25
19.5		—	—	6814	7301	7650	8777	25
20		—	—	6929 **	7421	7797	8878 **	25
20.5		—	—	7057	7556	7906	9026	25
21	13/16	—	—	7184	7702	8039	9220	25
21.5		—	—	7333	7829	8174	9382	25
22		—	—	7494 **	8038	8408	9557 **	25
22.5	7/8	—	—	7692	8208 **	8588	9719	25
23		—	—	8051	8593	8906	10041	25
23.5		—	—	8845	—	9836	10778	25
24	15/16	—	—	8845	—	9836	10885 **	25
24.5		—	—	9122	—	10266	11383	25
25		—	—	—	—	10640	11801 **	25
25.5	1	—	—	—	—	—	12167	25
26		—	—	—	—	—	12662 **	25
26.5		—	—	—	—	—	13040	25
27	1.1/16	—	—	—	—	—	13493	25
27.5		—	—	—	—	—	13924	25
28		—	—	—	—	—	14352	25
28.5	1.1/8	—	—	—	—	—	14814 **	25
29		—	—	—	—	—	15230	25
29.5		—	—	—	—	—	15651	25
30	1.3/16	—	—	—	—	—	16094	25
31	1.1/4	—	—	—	—	—	16523	25
32		—	—	—	—	—	16642	10

For more details please refer our Drill Catalogue Pages 46 to 51.



**HSS TAPER SHANK TWIST DRILLS
EXTRA LONG**

**FL and OAL as per Addison Standard
All other specifications as per IS 7822 - 2005**

Size		M2 Price Per Piece (Rs.)							MOQ (No.)
		Overall Length in millimetre							
mm	inch	375	400	425	450	475	500	525	
14.5	9/16	8429	9460	11122	12414	13970	15667	—	25
15		8547	9615	11073	12564	14109	15826	—	25
15.5		8710	9746	11152	12685	14233	15962	—	25
16	5/8	8845	9943	11384	12905	14405	16139	—	25
16.5		9009	10153	11555	13040	14552	16238	—	25
17		9129	10266	11693	13204	14693	16390	—	25
17.5	11/16	9284	10388	11834	13355	14879	16542	—	25
18		9446	10578	11983	13493	15036	16704	18539	25
18.5		9557	10744	12133	13648	15139	16864	18720	25
19	3/4	9706	10885	12261	13803	15288	16961	18826	25
19.5		9896	11107	12414	13966	15471	17126	19011	25
20		10030	11267	12662	14109	15639	17335	19242	25
20.5		10153	11436	12814	14352	15879	17596	19532	25
21	13/16	10364	11622	13088	14596	16171	17872	19839	25
21.5		10563	11844	13284	14904	16463	18236	20243	25
22		10744	12042 **	13493	15136	16725	18525	20562	25
22.5	7/8	10885	12172	13726	15345	17013	18833 **	20904	25
23		11123	12389 **	13924	15625	17265	19106	21208	25
23.5		11848	12813	14396	16069	17787	19693	21859	25
24	15/16	12002	13260 **	14848	16578	18271	20219	22443	25
24.5		12414	13712	15337	17050	18806	20769	22847	25
25		12905	14136 **	15771	17543	19329	21349	23484	25
25.5	1	13284	14556	16220	18003	19849	21848	24032	25
26		13764	15028	16704	18536	20362	22429	24674	25
26.5		14166	15447	17167	19009	20842	22980	25277	25
27	1.1/16	14662	15905 **	17621	19484	21384	23514	25866	25
27.5		15036	16298	18090	19974	21881	24044	26448	25
28		15471	16775 **	18536	20458	22863	24625 **	27088	25
28.5	1.1/8	15926	17192	18968	20955	22942	25133	27647	25
29		16364	17660	19445	21455	23427	25702	28272	25
29.5		16775	18078	19909	21912	23956	26265	28892	25
30	1.3/16	17226	18525	20362	22404	24460	26783	30005	25
31	1.1/4	17657	18973	20864	22986	25097	27539 **	30017	25
32		18003	19909 **	21881	24099	26265	28815 **	30701	10
33	1.5/16	—	20769 **	22855	25173	27440	30074	32084	10
34		—	21674	23826	26249	28628	31368	33439	10
35	1.3/8	—	22621 **	24871	27330	29826	32647	34789	10
36		—	23514 **	25815	28389	30975	33927	36086	10
37	1.7/16	—	24409	26783	29469	32137	35161	37440	10
38	1.1/2	—	25340 **	27849	30611	33342	36495	38852	10
39		—	26265	29070	31585	34401	37584	40006	10
40		—	27365 **	29903	32696	35562	38817	41268	10
41	1.5/8	—	—	—	—	—	40104	43313	10
42		—	—	—	—	—	41887	45238	10
43		—	—	—	—	—	43744	46806	10
44		—	—	—	—	—	45569	48758	10
45	1.3/4	—	—	—	—	—	47426	50312	10
46	1.13/16	—	—	—	—	—	49433	52399	10
47		—	—	—	—	—	51430	54517	10
48	1.7/8	—	—	—	—	—	53437	56644	10
49	1.15/16	—	—	—	—	—	55402	58726	10
50		—	—	—	—	—	57635 **	61093	10

For more details please refer our Drill Catalogue Pages 46 to 51.



**HSS TAPER SHANK TWIST DRILLS
EXTRA LONG**

**FL and OAL as per Addison Standard
All other specifications as per IS 7822 - 2005**

Size		M2 Price Per Piece (Rs.)						MOQ (No.)
		Overall Length in millimetre						
mm	inch	550	575	600	625	650	675	
14.5	9/16	—	—	—	—	—	—	—
15		—	—	—	—	—	—	—
15.5		—	—	—	—	—	—	—
16	5/8	—	—	—	—	—	—	—
16.5		—	—	—	—	—	—	—
17		—	—	—	—	—	—	—
17.5	11/16	—	—	—	—	—	—	—
18		20378	22215	24052	25890	27727	29565	10
18.5		20573	22429	24285	26139	27994	29849	10
19	3/4	20692	22557	24423	26289	28155	30020	10
19.5		20896	22779	24662	26546	28431	30314	10
20		21149	23055	24964	26870	28777	30684	10
20.5		21467	23402	25338	27273	29210	31145	10
21	13/16	21804	23770	25736	27702	29668	31633	10
21.5		22248	24254	26260	28265	30270	32277	10
22		22600	24638	26675	28713	30751	32789	10
22.5		22976	25047	27119	29191	31261	33333	10
23		23311	25413	27514	29616	31718	33821	10
23.5		24026	26193	28358	30526	32692	34857	10
24	15/16	24667	26891	29117	31341	33565	35788	10
24.5		24923	27000	29285	31569	33853	36138	10
25		25619	27754	29889	32024	34159	36294	10
25.5	1	26217	28402	30587	32771	34956	37141	10
26		26917	29158	31401	33646	35888	38132	10
26.5		27576	29874	32172	34470	36766	39066	10
27	1.1/16	28217	30568	32919	35271	37623	39974	10
27.5		28853	31258	33662	36066	38471	40876	10
28		29550	32014	34476	36939	39400	41863	10
28.5	1.1/8	30159	32673	35186	37699	40212	42726	10
29		30843	33413	35982	38554	41123	43693	10
29.5		31518	34144	36770	39397	42024	44650	10
30	1.3/16	32140	34819	37452	40174	42852	45531	10
31	1.1/4	32495	34974	37496	40349	42916	45640	10
32		33158	35614	38069	40525	42981	46400	10
33	1-5/16	34651	37215	39782	42349	44916	47482	10
34		36114	38788	41465	44139	46815	49489	10
35	1-3/8	37573	40357	43140	45922	48705	51489	10
36	1-7/16	38974	41860	44747	47632	50521	53407	10
37		40435	43431	46426	49422	52417	55413	10
38	1-1/2	41960	45068	48176	51285	54393	57501	10
39		43207	46407	49608	52809	56009	59209	10
40		44568	47870	51172	54472	57775	61076	10
41	1-5/8	46520	49729	52938	56146	59354	62563	10
42		48588	51940	55291	58642	61992	65180	10
43		49869	52930	55992	59054	62117	65344	10
44		51949	55139	58330	61519	64709	67898	10
45	1-3/4	54066	57384	60705	64025	67229	70196	10
46	1-13/16	55365	58332	61296	64263	67344	70664	10
47		57602	60688	63774	66861	69945	73033	10
48	1-7/8	59851	63056	66263	69470	72675	75882	10
49	1-15/16	62050	65374	68697	72022	75346	78670	10
50		64551	68009	71466	74926	78383	81842	10

For more details please refer our Drill Catalogue Pages 46 to 51.



**HSS TAPER SHANK TWIST DRILLS
EXTRA LONG**

**FL and OAL as per Addison Standard
All other specifications as per IS 7822 - 2005**

Size		M2 Price Per Piece (Rs.)						MOQ (No.)
		Overall Length in millimetre						
mm	inch	700	725	750	775	800	825	
14.5	9/16	—	—	—	—	—	—	—
15		—	—	—	—	—	—	—
15.5		—	—	—	—	—	—	—
16	5/8	—	—	—	—	—	—	—
16.5		—	—	—	—	—	—	—
17		—	—	—	—	—	—	—
17.5	11/16	—	—	—	—	—	—	—
18		31401	33239	35077	36914	38751	40589	5
18.5		31704	33560	35413	37268	39125	40979	5
19	3/4	31885	33752	35616	37483	39348	41215	5
19.5		32198	34082	35967	37850	39734	41618	5
20		32590	34497	36404	38311	40218	42124	5
20.5		33080	35017	36952	38888	40822	42758	5
21	13/16	33600	35564	37530	39497	41462	43428	5
21.5		34284	36289	38296	40301	42307	44313	5
22		34826	36864	38902	40939	42978	45015	5
22.5		35405	37476	39547	41620	43691	45761	5
23		35921	38023	40317	42227	44327	46430	5
23.5		37024	39191	41357	43522	45689	47855	5
24	15/16	38013	40237	42460	44686	46909	49134	5
24.5		38320	40499	42681	44759	46938	49146	5
25		38428	40564	42698	44834	46968	49158	5
25.5	1	39327	41512	43696	45881	48065	50250	5
26		40374	42617	44860	47103	49346	51589	5
26.5		41364	43662	45959	48256	50556	52854	5
27	1.1/16	42326	44676	47029	49381	51731	54083	5
27.5		43279	45685	48088	50493	52898	55301	5
28		44325	46789	49251	51714	54177	56638	5
28.5	1.1/8	45239	47752	50266	52779	55292	57805	5
29		46263	48834	51404	53974	56544	59115	5
29.5		47276	49903	52529	55157	57783	60408	5
30	1.3/16	48209	50887	53566	56146	58922	61601	5
31	1.1/4	48533	51010	53667	56245	59345	61823	5
32		48856	51312	53768	57310	59767	62223	5
33	1-5/16	50049	52616	55182	57749	60315	62882	5
34		52164	54839	57514	60190	62864	65540	5
35	1-3/8	54273	57056	59839	62621	65405	68189	5
36	1-7/16	56295	59181	62068	64954	67843	70728	5
37		58407	61402	64398	67394	70389	73384	5
38	1-1/2	60609	63718	66825	69933	73041	76149	5
39		62411	65611	68811	72012	75212	78412	5
40		64378	67679	70980	74282	77582	80884	5
41	1-5/8	65771	68980	72187	75396	78604	81814	5
42		68242	72045	75396	78748	82099	85449	5
43		68695	73161	76432	79703	82973	86243	5
44		71088	74278	77468	80659	83848	87037	5
45	1-3/4	73161	77305	80624	83944	87265	90583	5
46	1-13/16	73984	78254	81219	84187	88021	90987	5
47		76119	79204	82290	85376	88787	91874	5
48	1-7/8	79088	82294	85500	88706	91913	95119	5
49	1-15/16	81994	85318	88642	91967	95291	98615	5
50		85300	88758	92217	95675	99132	102591	5

For more details please refer our Drill Catalogue Pages 46 to 51.



**HSS TAPER SHANK TWIST DRILLS
EXTRA LONG**

**FL and OAL as per Addison Standard
All other specifications as per IS 7822 - 2005**

Size		M2 Price Per Piece (Rs.)							MOQ (No.)
		Overall Length in millimetre							
mm	inch	850	875	900	925	950	975	1000	
14.5	9/16	—	—	—	—	—	—	—	—
15		—	—	—	—	—	—	—	—
15.5		—	—	—	—	—	—	—	—
16	5/8	—	—	—	—	—	—	—	—
16.5		—	—	—	—	—	—	—	—
17		—	—	—	—	—	—	—	—
17.5	11/16	—	—	—	—	—	—	—	—
18		42426	44262	46100	—	—	—	—	—
18.5		42834	44689	46544	—	—	—	—	—
19	3/4	43080	44946	46812	—	—	—	—	—
19.5		43502	45386	47270	—	—	—	—	—
20		44032	45938	47845	—	—	—	—	—
20.5		44694	46629	48564	—	—	—	—	—
21	13/16	45394	47360	49327	—	—	—	—	—
21.5		46319	48325	50331	—	—	—	—	—
22		47053	49091	51128	53166	55204	57242	59280	5
22.5		47834	49905	51976	54048	56120	58191	60263	5
23		48532	50634	52735	54836	56939	59041	61525	5
23.5		50021	52189	54355	56521	58687	60854	63020	5
24	15/16	51358	53581	55806	58029	60254	62478	64702	5
24.5		51379	53613	55820	58053	60260	62576	64809	5
25		51401	53645	55834	58076	60266	62674	64916	5
25.5	1	52434	54619	56804	58988	61174	63358	65544	5
26		53832	56075	58318	60562	62804	65047	67290	5
26.5		55152	57449	59746	62046	64343	66641	68939	5
27	1.1/16	56435	58785	61137	63488	65839	68191	70542	5
27.5		57707	60110	62514	64920	67324	69728	72132	5
28		59101	61564	64026	66488	68952	71413	73876	5
28.5	1.1/8	60318	62832	65346	67857	70372	72885	75398	5
29		61684	64256	66825	69395	71966	74536	77106	5
29.5		63035	65661	68289	70915	73540	76168	78794	5
30	1.3/16	64279	66780	69591	72091	74679	77204	79558	5
31	1.1/4	64303	66958	69614	72200	74725	77227	79705	5
32		64679	67135	69635	72269	74771	77357	79813	5
33	1-5/16"	65448	68016	70582	73149	75715	78282	80849	5
34		68215	70890	73565	76240	78915	81590	84267	5
35	1-3/8"	70972	73755	76537	79321	82104	84887	87671	5
36	1-7/16"	73615	76502	79389	82275	85164	88050	90937	5
37		76380	79373	82369	85364	88360	91355	94350	5
38	1-1/2"	79258	82366	85474	88582	91689	94798	97906	2
39		81612	84813	88014	91214	94415	97616	100817	2
40		84187	87488	90789	94090	97392	100694	103994	2
41	1-5/8"	85020	88230	91438	94646	97854	101062	104271	2
42		85817	89168	92519	95799	98862	101924	104987	2
43		86615	89676	92738	95871	99151	102502	105276	2
44		90227	93417	96608	99796	102987	106176	109367	2
45	1-3/4"	93903	96919	99884	103205	106475	109491	112810	2
46	1-13/16"	93953	97223	100544	103508	106525	109939	113474	2
47		94958	98045	101130	104217	107302	110388	115519	2
48	1-7/8"	98325	101531	104738	107943	111150	114356	117562	2
49	1-15/16"	101939	105263	108587	111912	115236	118560	121883	2
50		106048	109506	112965	116423	119880	123339	126796	2

For more details please refer our Drill Catalogue Pages 46 to 51.



**M2 HSS TAPER SHANK TWIST DRILLS
EXTRA LONG**

**FL and OAL as per Addison Standard
All other specifications as per IS 7822 - 2005**

Size		M2 Price Per Piece (Rs.)								MOQ (No.)
		Overall Length in millimetre								
mm	inch	400	425	450	475	500	525	550	575	
50.50		43855	48238	52623	57009	61395	65781	70166	74551	2
50.8	2	43855	48238	52623	57009	61395	65781	70166	74551	2
51.00		—	—	57556	61525	65495	69464	73433	77403	2
51.50		—	—	57556	61525	65495	69464	73433	77403	2
51.59	2.1/32	—	—	57556	61525	65495	69464	73433	77403	2
52.00		—	—	57556	61525	65495	69464	73433	77403	2
52.39	2.1/16	—	—	57556	61525	65495	69464	73433	77403	2
52.50		—	—	61992	67159	72324	77491	82657	87823	2
53.00		—	—	61992	67159	72324	77491	82657	87823	2
53.18	2.3/32	—	—	61992	67159	72324	77491	82657	87823	2
53.50		—	—	61992	67159	72324	77491	82657	87823	2
53.97	2.1/8	—	—	61992	67159	72324	77491	82657	87823	2
54.00		—	—	61992	67159	72324	77491	82657	87823	2
54.50		—	—	65121	70549	75976	81404	86830	92257	2
54.77	2.5/32	—	—	65121	70549	75976	81404	86830	92257	2
55.00		—	—	65121	70549	75976	81404	86830	92257	2
55.50		—	—	65121	70549	75976	81404	86830	92257	2
55.56	2.3/16	—	—	65121	70549	75976	81404	86830	92257	2
56.00		—	—	67859	73515	79169	84825	90480	96135	2
56.36	2.7/32	—	—	67859	73515	79169	84825	90480	96135	2
56.50		—	—	67859	73515	79169	84825	90480	96135	2
57.00		—	—	67859	73515	79169	84825	90480	96135	2
57.15	2.1/4	—	—	67859	73515	79169	84825	90480	96135	2
57.50		—	—	70972	80228	86399	92571	98743	104914	2
57.94	2.9/32	—	—	70972	80228	86399	92571	98743	104914	2
58.00		—	—	70972	80228	86399	92571	98743	104914	2
58.50		—	—	70972	80228	86399	92571	98743	104914	2
58.74	2.5/16	—	—	70972	80228	86399	92571	98743	104914	2
59.00		—	—	72326	81760	88050	94339	100629	106917	2
59.50		—	—	72326	81760	88050	94339	100629	106917	2
59.53	2.11/32	—	—	72326	81760	88050	94339	100629	106917	2
60.00		—	—	72326	81760	88050	94339	100629	106917	2
60.32	2.3/8	—	—	72326	81760	88050	94339	100629	106917	2
60.50		—	—	78884	85570	92254	98940	105625	112309	2
61.00		—	—	78884	85570	92254	98940	105625	112309	2
61.12	2.13/32	—	—	78884	85570	92254	98940	105625	112309	2
61.50		—	—	78884	85570	92254	98940	105625	112309	2
61.91	2.7/16	—	—	78884	85570	92254	98940	105625	112309	2
62.00		—	—	78884	85570	92254	98940	105625	112309	2
62.50		—	—	78884	85570	92254	98940	105625	112309	2
62.71	2.15/32	—	—	80213	87009	93808	100605	107404	114201	2
63.00		—	—	80213	87009	93808	100605	107404	114201	2
63.5	2.1/2	—	—	80213	87009	93808	100605	107404	114201	2
64.00		—	—	87151	93162	100675	106684	114197	120208	2
64.29	2.17/32	—	—	87151	93162	100675	106684	114197	120208	2
64.50		—	—	87151	93162	100675	106684	114197	120208	2
65.00		—	—	87151	93162	100675	106684	114197	120208	2
65.09	2.9/16	—	—	87151	93162	100675	106684	114197	120208	2
65.50		—	—	87799	93855	101424	107479	115048	121103	2
65.88	2.19/32	—	—	87799	93855	101424	107479	115048	121103	2
66.00		—	—	87799	93855	101424	107479	115048	121103	2
66.50		—	—	87799	93855	101424	107479	115048	121103	2
66.67	2.5/8	—	—	87799	93855	101424	107479	115048	121103	2
67.00		—	—	89940	96143	103897	110100	117854	124056	2
67.47	2.21/32	—	—	—	103205	109863	116521	124844	133167	2



**M2 HSS TAPER SHANK TWIST DRILLS
EXTRA LONG**

**FL and OAL as per Addison Standard
All other specifications as per IS 7822 - 2005**

Size		M2 Price Per Piece (Rs.)								MOQ (No.)
		Overall Length in millimetre								
mm	inch	600	625	650	675	700	725	750	775	
50.50		78936	83321	87707	92093	96478	100864	105249	109635	2
50.80	2	78936	83321	87707	92093	96478	100864	105249	109635	2
51.00		81371	85341	89311	93279	97250	101219	109157	113127	2
51.50		81371	85341	89311	93279	97250	101219	109157	113127	2
51.59	2.1/32	81371	85341	89311	93279	97250	101219	109157	113127	2
52.00		81371	85341	89311	93279	97250	101219	109157	113127	2
52.39	2.1/16	81371	85341	89311	93279	97250	101219	109157	113127	2
52.50		92989	98155	103321	108487	113652	118819	123985	129152	2
53.00		92989	98155	103321	108487	113652	118819	123985	129152	2
53.18	2.3/32	92989	98155	103321	108487	113652	118819	123985	129152	2
53.50		92989	98155	103321	108487	113652	118819	123985	129152	2
53.97	2.1/8	92989	98155	103321	108487	113652	118819	123985	129152	2
54.00		92989	98155	103321	108487	113652	118819	123985	129152	2
54.50		97684	103111	108537	113964	119390	124817	130245	135672	2
54.77	2.5/32	97684	103111	108537	113964	119390	124817	130245	135672	2
55.00		97684	103111	108537	113964	119390	124817	130245	135672	2
55.50		97684	103111	108537	113964	119390	124817	130245	135672	2
55.56	2.3/16	97684	103111	108537	113964	119390	124817	130245	135672	2
56.00		101790	107444	113100	118755	124408	130064	135719	141375	2
56.36	2.7/32	101790	107444	113100	118755	124408	130064	135719	141375	2
56.50		101790	107444	113100	118755	124408	130064	135719	141375	2
57.00		101790	107444	113100	118755	124408	130064	135719	141375	2
57.15	2.1/4	101790	107444	113100	118755	124408	130064	135719	141375	2
57.50		111086	117257	123428	129600	135771	141942	148113	154286	2
57.94	2.9/32	111086	117257	123428	129600	135771	141942	148113	154286	2
58.00		111086	117257	123428	129600	135771	141942	148113	154286	2
58.50		111086	117257	123428	129600	135771	141942	148113	154286	2
58.74	2.5/16	111086	117257	123428	129600	135771	141942	148113	154286	2
59.00		113207	119496	125786	132075	138364	144654	150942	157232	2
59.50		113207	119496	125786	132075	138364	144654	150942	157232	2
59.53	2.11/32	113207	119496	125786	132075	138364	144654	150942	157232	2
60.00		113207	119496	125786	132075	138364	144654	150942	157232	2
60.32	2.3/8	113207	119496	125786	132075	138364	144654	150942	157232	2
60.50		118994	125681	132365	139050	145736	152421	159105	165791	2
61.00		118994	125681	132365	139050	145736	152421	159105	165791	2
61.12	2.13/32	118994	125681	132365	139050	145736	152421	159105	165791	2
61.50		118994	125681	132365	139050	145736	152421	159105	165791	2
61.91	2.7/16	118994	125681	132365	139050	145736	152421	159105	165791	2
62.00		118994	125681	132365	139050	145736	152421	159105	165791	2
62.50		118994	125681	132365	139050	145736	152421	159105	165791	2
62.71	2.15/32	120998	127796	134594	141391	148189	154987	161785	168581	2
63.00		120998	127796	134594	141391	148189	154987	161785	168581	2
63.5	2.1/2	120998	127796	134594	141391	148189	154987	161785	168581	2
64.00		126218	132228	138239	144249	150260	156270	162280	169063	2
64.29	2.17/32	126218	132228	138239	144249	150260	156270	162280	169063	2
64.50		126218	132228	138239	144249	150260	156270	162280	169063	2
65.00		126218	132228	138239	144249	150260	156270	162280	169063	2
65.09	2.9/16	126218	132228	138239	144249	150260	156270	162280	169063	2
65.50		127159	133214	139269	145323	151379	157434	163489	169544	2
65.88	2.19/32	127159	133214	139269	145323	151379	157434	163489	169544	2
66.00		127159	133214	139269	145323	151379	157434	163489	169544	2
66.50		127159	133214	139269	145323	151379	157434	163489	169544	2
66.67	2.5/8	127159	133214	139269	145323	151379	157434	163489	169544	2
67.00		130259	136462	142664	148867	155071	161273	167476	173678	2
67.47	2.21/32	141490	149813	158136	166459	174783	183104	191428	199751	2



**M2 HSS TAPER SHANK TWIST DRILLS
EXTRA LONG**

**FL and OAL as per Addison Standard
All other specifications as per IS 7822 - 2005**

Size		M2 Price Per Piece (Rs.)									MOQ (No.)
		Overall Length in millimetre									
mm	inch	800	825	850	875	900	925	950	975	1000	
50.50		114019	118405	122791	127176	131561	135946	140332	144716	149102	2
50.8	2	114019	118405	122791	127176	131561	135946	140332	144716	149102	2
51.00		117096	121065	125035	129005	132973	136942	140913	144882	150836	2
51.50		117096	121065	125035	129005	132973	136942	140913	144882	150836	2
51.59	2.1/32	117096	121065	125035	129005	132973	136942	140913	144882	150836	2
52.00		117096	121065	125035	129005	132973	136942	140913	144882	150836	2
52.39	2.1/16	117096	121065	125035	129005	132973	136942	140913	144882	150836	2
52.50		134317	139483	144649	149815	154981	160148	165313	170480	175645	2
53.00		134317	139483	144649	149815	154981	160148	165313	170480	175645	2
53.18	2.3/32	134317	139483	144649	149815	154981	160148	165313	170480	175645	2
53.50		134317	139483	144649	149815	154981	160148	165313	170480	175645	2
53.97	2.1/8	134317	139483	144649	149815	154981	160148	165313	170480	175645	2
54.00		134317	139483	144649	149815	154981	160148	165313	170480	175645	2
54.50		141098	146525	151953	157379	162807	168233	173659	179086	184513	2
54.77	2.5/32	141098	146525	151953	157379	162807	168233	173659	179086	184513	2
55.00		141098	146525	151953	157379	162807	168233	173659	179086	184513	2
55.50		141098	146525	151953	157379	162807	168233	173659	179086	184513	2
55.56	2.3/16	141098	146525	151953	157379	162807	168233	173659	179086	184513	2
56.00		147029	152685	158340	163994	169650	175305	180958	186613	192269	2
56.36	2.7/32	147029	152685	158340	163994	169650	175305	180958	186613	192269	2
56.50		147029	152685	158340	163994	169650	175305	180958	186613	192269	2
57.00		147029	152685	158340	163994	169650	175305	180958	186613	192269	2
57.15	2.1/4	147029	152685	158340	163994	169650	175305	180958	186613	192269	2
57.50		160457	166629	172800	178972	185143	191314	197485	203656	209828	2
57.94	2.9/32	160457	166629	172800	178972	185143	191314	197485	203656	209828	2
58.00		160457	166629	172800	178972	185143	191314	197485	203656	209828	2
58.50		160457	166629	172800	178972	185143	191314	197485	203656	209828	2
58.74	2.5/16	160457	166629	172800	178972	185143	191314	197485	203656	209828	2
59.00		163522	169810	176100	182389	188677	194968	201256	207546	213835	2
59.50		163522	169810	176100	182389	188677	194968	201256	207546	213835	2
59.53	2.11/32	163522	169810	176100	182389	188677	194968	201256	207546	213835	2
60.00		163522	169810	176100	182389	188677	194968	201256	207546	213835	2
60.32	2.3/8	163522	169810	176100	182389	188677	194968	201256	207546	213835	2
60.50		172477	179161	185846	192531	199216	205902	212587	219272	225957	2
61.00		172477	179161	185846	192531	199216	205902	212587	219272	225957	2
61.12	2.13/32	172477	179161	185846	192531	199216	205902	212587	219272	225957	2
61.50		172477	179161	185846	192531	199216	205902	212587	219272	225957	2
61.91	2.7/16	172477	179161	185846	192531	199216	205902	212587	219272	225957	2
62.00		172477	179161	185846	192531	199216	205902	212587	219272	225957	2
62.50		172477	179161	185846	192531	199216	205902	212587	219272	225957	2
62.71	2.15/32	175380	182177	188974	195773	202570	209368	216167	222963	229761	2
63.00		175380	182177	188974	195773	202570	209368	216167	222963	229761	2
63.5	2.1/2	175380	182177	188974	195773	202570	209368	216167	222963	229761	2
64.00		175489	184068	192333	198343	204354	210364	216374	222384	228393	2
64.29	2.17/32	175489	184068	192333	198343	204354	210364	216374	222384	228393	2
64.50		175489	184068	192333	198343	204354	210364	216374	222384	228393	2
65.00		175489	184068	192333	198343	204354	210364	216374	222384	228393	2
65.09	2.9/16	175489	184068	192333	198343	204354	210364	216374	222384	228393	2
65.50		175598	185438	193766	199820	205875	211931	217986	224040	230094	2
65.88	2.19/32	175598	185438	193766	199820	205875	211931	217986	224040	230094	2
66.00		175598	185438	193766	199820	205875	211931	217986	224040	230094	2
66.50		175598	185438	193766	199820	205875	211931	217986	224040	230094	2
66.67	2.5/8	175598	185438	193766	199820	205875	211931	217986	224040	230094	2
67.00		179882	186084	192490	198490	204490	210490	216490	222490	228490	2
67.47	2.21/32	208074	216396	224719	233043	241366	249688	258012	266334	274658	2



**M2 HSS TAPER SHANK TWIST DRILLS
EXTRA LONG**

**FL and OAL as per Addison Standard
All other specifications as per IS 7822 - 2005**

Size		M2 Price Per Piece (Rs.)					MOQ (No.)
		Overall Length in millimetre					
mm	inch	475	500	525	550	575	
67.50		103205	109863	116521	124844	133167	2
68.00		103205	109863	116521	124844	133167	2
68.26	2.11/16	103205	109863	116521	124844	133167	2
68.50		108931	116075	123217	130360	137504	2
69.00		110061	117279	124496	131713	138930	2
69.05	2.23/32	110061	117279	124496	131713	138930	2
69.50		110061	117279	124496	131713	138930	2
69.85	2.3/4	110061	117279	124496	131713	138930	2
70.00		110061	117279	124496	131713	138930	2
70.50		115500	123200	130900	138599	146300	2
70.64	2.25/32	116756	124541	132325	140108	147892	2
71.00		116756	124541	132325	140108	147892	2
71.44	2.13/16	116756	124541	132325	140108	147892	2
71.50		116756	124541	132325	140108	147892	2
72.00		119013	126946	134880	142815	150750	2
72.23	2.27/32	119013	126946	134880	142815	150750	2
72.50		119013	126946	134880	142815	150750	2
73.00		119013	126946	134880	142815	150750	2
73.02	2.7/8	119013	126946	134880	142815	150750	2
73.50		123247	131601	139957	148314	156669	2
73.82	2.29/32	124551	132993	141438	149882	158327	2
74.00		124551	132993	141438	149882	158327	2
74.50		124551	132993	141438	149882	158327	2
74.61	2.15/16	124551	132993	141438	149882	158327	2
75.00		126100	134649	143198	151748	160297	2
75.41	2.31/32	126100	134649	143198	151748	160297	2
75.50		126100	134649	143198	151748	160297	2
76.00		126100	134649	143198	151748	160297	2
76.20	3	126100	134649	143198	151748	160297	2
76.99	3.1/32	—	—	—	157890	169587	2
77.00		—	—	—	157890	169587	2
77.79	3.1/16	—	—	—	157890	169587	2
78.00		—	—	—	157890	169587	2
78.58	3.3/32	—	—	—	161039	172967	2
79.00		—	—	—	161039	172967	2
79.37	3.1/8	—	—	—	165315	177560	2
80.00		—	—	—	165315	177560	2
80.17	3.5/32	—	—	—	176819	189915	2
80.96	3.3/16	—	—	—	176819	189915	2
81.00		—	—	—	176819	189915	2
81.76	3.7/32	—	—	—	181414	194853	2
82.00		—	—	—	181414	194853	2
82.55	3.1/4	—	—	—	181414	194853	2
83.00		—	—	—	185162	198877	2
83.34	3.9/32	—	—	—	185162	198877	2
84.00		—	—	—	185162	198877	2
84.14	3.5/16	—	—	—	188241	202185	2
84.93	3.11/32	—	—	—	188241	202185	2
85.00		—	—	—	188241	202185	2
85.72	3.3/8	—	—	—	214716	230621	2
86.00		—	—	—	214716	230621	2
86.52	3.13/32	—	—	—	214716	230621	2
87.00		—	—	—	214716	230621	2



**M2 HSS TAPER SHANK TWIST DRILLS
EXTRA LONG**

**FL and OAL as per Addison Standard
All other specifications as per IS 7822 - 2005**

Size		M2 Price Per Piece (Rs.)								MOQ (No.)
		Overall Length in millimetre								
mm	inch	600	625	650	675	700	725	750	775	
67.50		141490	149813	158136	166459	174783	183104	191428	199751	2
68.00		141490	149813	158136	166459	174783	183104	191428	199751	2
68.26	2.11/16	141490	149813	158136	166459	174783	183104	191428	199751	2
68.50		144646	151790	158931	167130	174898	187504	194647	201790	2
69.00		146148	153365	160582	167798	175016	189450	196666	203884	2
69.05	2.23/32	146148	153365	160582	167798	175016	189450	196666	203884	2
69.50		146148	153365	160582	167798	175016	189450	196666	203884	2
69.85	2.3/4	146148	153365	160582	167798	175016	189450	196666	203884	2
70.00		146148	153365	160582	167798	175016	189450	196666	203884	2
70.50		154000	161700	169400	177101	184800	192500	200200	207899	2
70.64	2.25/32	155674	163460	171244	179026	186810	194594	202377	210161	2
71.00		155674	163460	171244	179026	186810	194594	202377	210161	2
71.44	2.13/16	155674	163460	171244	179026	186810	194594	202377	210161	2
71.50		155674	163460	171244	179026	186810	194594	202377	210161	2
72.00		158684	166619	174552	182486	190421	198355	206289	214224	2
72.23	2.27/32	158684	166619	174552	182486	190421	198355	206289	214224	2
72.50		158684	166619	174552	182486	190421	198355	206289	214224	2
73.00		158684	166619	174552	182486	190421	198355	206289	214224	2
73.02	2.7/8	158684	166619	174552	182486	190421	198355	206289	214224	2
73.50		165025	173380	181737	190091	198447	206804	215159	223515	2
73.82	2.29/32	166770	175215	183658	192102	200547	208991	217435	225879	2
74.00		166770	175215	183658	192102	200547	208991	217435	225879	2
74.50		166770	175215	183658	192102	200547	208991	217435	225879	2
74.61	2.15/16	166770	175215	183658	192102	200547	208991	217435	225879	2
75.00		168846	177395	185945	194494	203043	211592	220140	228689	2
75.41	2.31/32	168846	177395	185945	194494	203043	211592	220140	228689	2
75.50		168846	177395	185945	194494	203043	211592	220140	228689	2
76.00		168846	177395	185945	194494	203043	211592	220140	228689	2
76.2	3	168846	177395	185945	194494	203043	211592	220140	228689	2
76.99	3.1/32	181282	192977	204673	216368	228064	239760	251456	263151	2
77.00		181282	192977	204673	216368	228064	239760	251456	263151	2
77.79	3.1/16	181282	192977	204673	216368	228064	239760	251456	263151	2
78.00		181282	192977	204673	216368	228064	239760	251456	263151	2
78.58	3.3/32	184896	196825	208756	220685	232613	244542	256470	268399	2
79.00		184896	196825	208756	220685	232613	244542	256470	268399	2
79.37	3.1/8	189805	202051	214297	226542	238787	251032	263280	275524	2
80.00		189805	202051	214297	226542	238787	251032	263280	275524	2
80.17	3.5/32	203012	216111	229208	242306	255404	268501	281598	294696	2
80.96	3.3/16	203012	216111	229208	242306	255404	268501	281598	294696	2
81.00		203012	216111	229208	242306	255404	268501	281598	294696	2
81.76	3.7/32	208290	221730	235166	248605	262043	275482	288919	302359	2
82.00		208290	221730	235166	248605	262043	275482	288919	302359	2
82.55	3.1/4	208290	221730	235166	248605	262043	275482	288919	302359	2
83.00		212593	226308	240025	253740	267456	281172	294887	308603	2
83.34	3.9/32	212593	226308	240025	253740	267456	281172	294887	308603	2
84.00		212593	226308	240025	253740	267456	281172	294887	308603	2
84.14	3.5/16	216129	230073	244016	257960	271902	285846	299790	313733	2
84.93	3.11/32	216129	230073	244016	257960	271902	285846	299790	313733	2
85.00		216129	230073	244016	257960	271902	285846	299790	313733	2
85.72	3.3/8	246527	262431	278336	294241	310145	326050	341955	357860	2
86.00		246527	262431	278336	294241	310145	326050	341955	357860	2
86.52	3.13/32	246527	262431	278336	294241	310145	326050	341955	357860	2
87.00		246527	262431	278336	294241	310145	326050	341955	357860	2



**M2 HSS TAPER SHANK TWIST DRILLS
EXTRA LONG**

**FL and OAL as per Addison Standard
All other specifications as per IS 7822 - 2005**

Size		M2 Price Per Piece (Rs.)									MOQ (No.)
		Overall Length in millimetre									
mm	inch	800	825	850	875	900	925	950	975	1000	
67.50		208074	216396	224719	233043	241364	249688	258012	266334	274658	2
68.00		208074	216396	224719	233043	241364	249688	258012	266334	274658	2
68.26	2.11/16	208074	216396	224719	233043	241364	249688	258012	266334	274658	2
68.50		208934	217357	225128	233933	245541	250005	258935	267864	275705	2
69.00		211102	218319	225537	236361	247003	252601	261622	269384	277492	2
69.05	2.23/32	211102	218319	225537	236361	247003	252601	261622	269384	277492	2
69.50		211102	218319	225537	236361	247003	252601	261622	269384	277492	2
69.85	2.3/4	211102	218319	225537	236361	247003	252601	261622	269384	277492	2
70.00		211102	218319	225537	236361	247003	252601	261622	269384	277492	2
70.50		215600	223300	230999	238700	248586	254100	261800	269499	278094	2
70.64	2.25/32	217946	225729	233513	241296	249081	256864	264648	272432	280216	2
71.00		217946	225729	233513	241296	249081	256864	264648	272432	280216	2
71.44	2.13/16	217946	225729	233513	241296	249081	256864	264648	272432	280216	2
71.50		217946	225729	233513	241296	249081	256864	264648	272432	280216	2
72.00		222158	230092	238026	245960	253894	261828	269763	277697	285631	2
72.23	2.27/32	222158	230092	238026	245960	253894	261828	269763	277697	285631	2
72.50		222158	230092	238026	245960	253894	261828	269763	277697	285631	2
73.00		222158	230092	238026	245960	253894	261828	269763	277697	285631	2
73.02	2.7/8	222158	230092	238026	245960	253894	261828	269763	277697	285631	2
73.50		231870	240225	248582	256937	265293	273648	282005	290360	298715	2
73.82	2.29/32	234322	242768	251212	259655	268099	276544	284987	293432	301876	2
74.00		234322	242768	251212	259655	268099	276544	284987	293432	301876	2
74.50		234322	242768	251212	259655	268099	276544	284987	293432	301876	2
74.61	2.15/16	234322	242768	251212	259655	268099	276544	284987	293432	301876	2
75.00		237238	245787	254337	262885	271435	279984	288534	297082	305632	2
75.41	2.31/32	237238	245787	254337	262885	271435	279984	288534	297082	305632	2
75.50		237238	245787	254337	262885	271435	279984	288534	297082	305632	2
76.00		237238	245787	254337	262885	271435	279984	288534	297082	305632	2
76.2	3	237238	245787	254337	262885	271435	279984	288534	297082	305632	2
76.99	3.1/32	274847	286542	298237	309934	321629	333324	345019	—	—	2
77.00		274847	286542	298237	309934	321629	333324	345019	—	—	2
77.79	3.1/16	274847	286542	298237	309934	321629	333324	345019	—	—	2
78.00		274847	286542	298237	309934	321629	333324	345019	—	—	2
78.58	3.3/32	280328	292256	304186	316114	328044	339973	351901	—	—	2
79.00		280328	292256	304186	316114	328044	339973	351901	—	—	2
79.37	3.1/8	287769	300016	312260	324507	336753	348998	361243	—	—	2
80.00		287769	300016	312260	324507	336753	348998	361243	—	—	2
80.17	3.5/32	307794	320891	333991	347088	360184	373283	386380	—	—	2
80.96	3.3/16	307794	320891	333991	347088	360184	373283	386380	—	—	2
81.00		307794	320891	333991	347088	360184	373283	386380	—	—	2
81.76	3.7/32	315795	329234	342672	356111	369547	382986	396424	—	—	2
82.00		315795	329234	342672	356111	369547	382986	396424	—	—	2
82.55	3.1/4	315795	329234	342672	356111	369547	382986	396424	—	—	2
83.00		322319	336035	349750	363466	377181	390897	404612	—	—	2
83.34	3.9/32	322319	336035	349750	363466	377181	390897	404612	—	—	2
84.00		322319	336035	349750	363466	377181	390897	404612	—	—	2
84.14	3.5/16	327677	341621	355565	369509	383452	397396	411340	—	—	2
84.93	3.11/32	327677	341621	355565	369509	383452	397396	411340	—	—	2
85.00		327677	341621	355565	369509	383452	397396	411340	—	—	2
85.72	3.3/8	373765	389670	405576	421481	437385	453290	469195	—	—	2
86.00		373765	389670	405576	421481	437385	453290	469195	—	—	2
86.52	3.13/32	373765	389670	405576	421481	437385	453290	469195	—	—	2
87.00		373765	389670	405576	421481	437385	453290	469195	—	—	2



**M2 HSS TAPER SHANK TWIST DRILLS
EXTRA LONG**

**FL and OAL as per Addison Standard
All other specifications as per IS 7822 - 2005**

Size		M2 Price Per Piece (Rs.)								MOQ (No.)
		Overall Length in millimetre								
mm	inch	400	425	450	475	500	525	550	575	
87.31	3.7/16	—	—	—	—	—	—	219206	235444	2
88.00		—	—	—	—	—	—	219206	235444	2
88.11	3.15/32	—	—	—	—	—	—	219206	235444	2
88.90	3.1/2	—	—	—	—	—	—	219206	235444	2
89.00		—	—	—	—	—	—	219206	235444	2
90.00		—	—	—	—	—	—	223675	240244	2
90.49	3.9/16	—	—	—	—	—	—	232018	249204	2
91.00		—	—	—	—	—	—	232018	249204	2
92.00		—	—	—	—	—	—	232018	249204	2
92.07	3.5/8	—	—	—	—	—	—	239595	257341	2
93.00		—	—	—	—	—	—	239595	257341	2
93.66	3.11/16	—	—	—	—	—	—	248657	267075	2
94.00		—	—	—	—	—	—	248657	267075	2
95.00		—	—	—	—	—	—	248657	267075	2
95.25	3.3/4	—	—	—	—	—	—	248657	267075	2
96.00		—	—	—	—	—	—	256981	276016	2
96.84	3.13/16	—	—	—	—	—	—	256981	276016	2
97.00		—	—	—	—	—	—	256981	276016	2
98.00		—	—	—	—	—	—	261526	280898	2
98.42	3.7/8	—	—	—	—	—	—	265260	284909	2
99.00		—	—	—	—	—	—	265260	284909	2
100.00		—	—	—	—	—	—	265260	284909	2
100.01	3.15/16	—	—	—	—	—	—	269804	289788	2
101.00		—	—	—	—	—	—	269804	289788	2
101.6	4	—	—	—	—	—	—	269804	289788	2
102.00		—	—	—	—	—	—	269804	289788	2



**M2 HSS TAPER SHANK TWIST DRILLS
EXTRA LONG**

**FL and OAL as per Addison Standard
All other specifications as per IS 7822 - 2005**

Size		M2 Price Per Piece (Rs.)								MOQ (No.)
		Overall Length in millimetre								
mm	inch	600	625	650	675	700	725	750	775	
87.31	3.7/16	251681	267919	284155	300392	316631	332867	349104	365343	2
88.00		251681	267919	284155	300392	316631	332867	349104	365343	2
88.11	3.15/32	251681	267919	284155	300392	316631	332867	349104	365343	2
	3.1/2	251681	267919	284155	300392	316631	332867	349104	365343	2
89.00		251681	267919	284155	300392	316631	332867	349104	365343	2
90.00		256814	273382	289950	306518	323088	339657	356224	372793	2
90.49	3.9/16	266391	283577	300766	317952	335139	352325	369512	386698	2
91.00		266391	283577	300766	317952	335139	352325	369512	386698	2
92.00		266391	283577	300766	317952	335139	352325	369512	386698	2
92.07	3.5/8	275090	292837	310584	328332	346080	363828	381575	399324	2
93.00		275090	292837	310584	328332	346080	363828	381575	399324	2
93.66	3.11/16	285495	303912	322332	340751	359169	377589	396007	414427	2
94.00		285495	303912	322332	340751	359169	377589	396007	414427	2
95.00		285495	303912	322332	340751	359169	377589	396007	414427	2
95.25	3.3/4	285495	303912	322332	340751	359169	377589	396007	414427	2
96.00		295053	314088	333123	352159	371195	390229	409267	428303	2
96.84	3.13/16	295053	314088	333123	352159	371195	390229	409267	428303	2
97.00		295053	314088	333123	352159	371195	390229	409267	428303	2
98.00		300271	319642	339015	358388	377759	397133	416504	435876	2
98.42	3.7/8	304556	324205	343855	363504	383152	402801	422449	442099	2
99.00		304556	324205	343855	363504	383152	402801	422449	442099	2
100.00		304556	324205	343855	363504	383152	402801	422449	442099	2
100.01	3.15/16	309774	329758	349745	369731	389715	409702	429686	449671	2
101.00		309774	329758	349745	369731	389715	409702	429686	449671	2
101.6	4	309774	329758	349745	369731	389715	409702	429686	449671	2
102.00		309774	329758	349745	369731	389715	409702	429686	449671	2



**M2 HSS TAPER SHANK TWIST DRILLS
EXTRA LONG**

**FL and OAL as per Addison Standard
All other specifications as per IS 7822 - 2005**

Size		M2 Price Per Piece (Rs.)							MOQ (No.)
		Overall Length in millimetre							
mm	inch	800	825	850	875	900	925	950	
87.31	3.7/16	381580	397817	414055	430292	446529	462767	479004	2
88.00		381580	397817	414055	430292	446529	462767	479004	2
88.11	3.15/32	381580	397817	414055	430292	446529	462767	479004	2
88.9	3.1/2	381580	397817	414055	430292	446529	462767	479004	2
89.00		381581	397818	414056	430293	446532	462768	479005	2
90.00		389361	405931	422499	439067	455636	472204	488774	2
90.49	3.9/16	403884	421071	438258	455445	472631	489817	507004	2
91.00		403884	421071	438258	455445	472631	489817	507004	2
92.00		403884	421071	438258	455445	472631	489817	507004	2
92.07	3.5/8	417071	434819	452567	470314	488061	505810	523557	2
93.00		417071	434819	452567	470314	488061	505810	523557	2
93.66	3.11/16	432846	451265	469683	488102	506521	524941	543359	2
94.00		432846	451265	469683	488102	506521	524941	543359	2
95.00		432846	451265	469683	488102	506521	524941	543359	2
95.25	3.3/4	432846	451265	469683	488102	506521	524941	543359	2
96.00		447337	466372	485409	504444	523480	542516	561551	2
96.84	3.13/16	447337	466372	485409	504444	523480	542516	561551	2
97.00		447337	466372	485409	504444	523480	542516	561551	2
98.00		455249	474621	493994	513367	532738	552110	571482	2
98.42	3.7/8	461747	481396	501045	520694	540343	559991	579640	2
99.00		461747	481396	501045	520694	540343	559991	579640	2
100.00		461747	481396	501045	520694	540343	559991	579640	2
100.01	3.15/16	469657	489643	509628	529613	549599	569585	589569	2
101.00		469657	489643	509628	529613	549599	569585	589569	2
101.6	4	469657	489643	509628	529613	549599	569585	589569	2
102.00		469657	489643	509628	529613	549599	569585	589569	2

HSS SHELL DRILLS

BS: 122 (PART 2) 1964

(TAPER HOLE 1 IN 96) RH Cutting with RH Helical Flutes

Dia Inch	M2 Price Per Piece (Rs.)	MOQ (No.)	Dia Inch	M2 Price Per Piece (Rs.)	MOQ (No.)	Dia Inch	M2 Price Per Piece (Rs.)	MOQ (No.)
1	3243	5	1.11/16	6036	5	2.3/4	15070	3
1.1/16	3423	5	1.3/4	6174	5	2.7/8	16746	3
1.1/8	3627	5	1.13/16	6416	5	3	18394	3
1.3/16	3849	5	1.7/8	6611	5	3.1/8	20623	3
1.1/4	4021	5	1.15/16	6929	5	3.1/4	22616	3
1.5/16	4215	5	2	7165	5	3.3/8	24324	3
1.3/8	4454	5	2.1/8	7919	5	3.1/2	36388	3
1.7/16	4651	5	2.1/4	8667	5	3.5/8	30856	3
1.1/2	4819	5	2.3/8	9697	5	3.3/4	32280	3
1.9/16	5095	5	2.1/2	11792	5	3.7/8	37365	3
1.5/8	5317	5	2.5/8	13701	3	4	41292	3



HSS CENTRE DRILLS

TYPE - A IS 6708-1977

Pilot Dia mm	Body Dia mm	M2		M35		
		Price Per Piece (Rs.)	MOQ (No.)	Price Per Piece (Rs.)	Price Per Piece (Rs.)	MOQ (No.)
		Without TIN-Coated		Without TIN-Coated	TIN-Coated	
1	3.15	217 **	50	253	315	300
1.25	3.15	217 **	50	253	315	300
1.6	4	217 *	50	253	320	300
2	5	217 *	50	253	328	300
2.5	6.3	251 *	50	291	384	300
3.15	8	389 *	50	451	577	300
4	10	477 *	50	554	726	300
5	12.5	808 *	50	936	1142	300
6.3	16	955 *	50	1109	1354	300
8	20	1474 *	50	1739	2020	300
10	25	1898 **	50	2356	2972	300

TYPE - B IS 6709-1977

1.6	6.3	444 **	50	516	608	300
2	8	628 *	50	730	855	300
2.5	10	801 *	50	930	1101	300
3.15	11.2	1065 *	50	1238	1443	300
4	14	1429 *	50	1701	1942	200
5	18	2042 *	50	2471	2750	200
6.3	20	2405 *	50	2790	3070	200
8	25	3110 *	50	3765	4383	200

TYPE - R IS 6710-1977

1	3.15	217	50	253	315	300
1.25	3.15	217	50	253	315	300
1.6	4	217	50	253	320	300
2	5	217 **	50	253	328	300
2.5	6.3	251 **	50	291	384	300
3.15	8	389 **	50	451	577	300
4	10	477 **	50	554	726	300
5	12.5	808	50	936	1142	300
6.3	16	955	50	1109	1354	300
8	20	1474	50	1739	2020	300
10	25	1898	50	2356	2972	300

BS 328 (PART 2) 1950

"Size BS No."	Pilot Dia. Inch	"Body Dia. Inch"	M2	MOQ	M35 Without TIN-Coated	M35 TIN-Coated	MOQ
BS 1	3/64	1/8	217 **	50	253	315	300
BS 2	1/16	3/16	217 *	50	253	320	300
BS 3	3/32	1/4	251 *	50	291	384	300
BS 4	1/8	5/16	389 *	50	451	577	300
BS 5	3/16	7/16	507 *	50	588	793	300
BS 6	1/4	5/8	955 *	50	1109	1354	300
BS 7	5/16	3/4	1474 *	50	1755	2035	300

For more details refer our Drill Catalogue Pages 54 to 57



HSS TAPER SHANK CORE DRILLS

IS 5366 - 1978

BS 328 (PART 1) - 1959

Size		M2 Price Per Piece (Rs.)	MOQ (No.)	Size		M2 Price Per Piece (Rs.)	MOQ (No.)	Size		M2 Price Per Piece (Rs.)	MOQ (No.)
mm	inch			mm	inch			mm	inch		
7.00		1216	35	(26.99)	1.1/16	7398	35	51.00		36401	5
(7.14)	9/32	1216	35	27.00		7398	35	52.00		40088	5
7.50		1298	35	(27.78)	1.3/32	7679	35	(52.39)	2.1/16	40088	5
(7.94)	5/16	1294	35	28.00		8136	35	53.00		46830	5
8.00		1298	35	(28.57)	1.1/8	8137	35	(53.97)	2.1/8	46830	5
8.50		1323	35	29.00		8517	35	54.00		46830	5
(8.73)	11/32	1298	35	(29.37)	1.5/32	8517	35	55.00		49085	5
9.00		1328	35	30.00		9046	35	(55.56)	2.3/16	49085	5
(9.52)	3/8	1427	35	(30.16)	1.3/16	9046	35	56.00		51165	5
10.00		1427	35	(30.96)	1.7/32	9389	35	57.00		51165	5
(10.32)	13/32	1427	35	31.00		10556	35	(57.15)	2.1/4	51165	5
11.00		1429	35	(31.75)	1.1/4	11020	35	58.00		55913	5
(11.11)	7/16	1429	35	32.00		12077	20	(58.74)	2.5/16	55913	5
(11.91)	15/32	1528	35	(32.54)	1.9/32	12077	20	59.00		56947	5
12.00		1528	35	33.00		12331	20	60.00		56947	5
(12.70)	1/2	1614	35	(33.34)	1.5/16	12331	20	(60.32)	2.3/8	56947	5
13.00		2184	35	34.00		13525	20	61.00		60688	5
(13.49)	17/32	2391	35	(34.13)	1.11/32	13525	20	(61.91)	2.7/16	60688	5
14.00		2391	35	(34.92)	1.3/8	14282	20	62.00		60688	5
(14.29)	9/16	2460	35	35.00		14282	20	63.00		62435	5
15.00		2566	35	(35.72)	1.13/32	15362	20	(63.50)	2.1/2	62435	5
(15.08)	19/32	2566	35	36.00		15362	20	64.00		68169	5
15.87	5/8	2626	35	(36.51)	1.7/16	16205	20	65.00		68169	3
16.00		2626	35	37.00		16205	20	(65.09)	2.9/16	68169	3
(16.67)	21/32	2767	35	(37.31)	1.15/32	16666	20	66.00		71475	3
17.00		2767	35	38.00		17832	20	(66.67)	2.5/8	71475	3
(17.46)	11/16	2988	35	(38.10)	1.1/2	17832	20	67.00		74457	3
18.00		3213	35	39.00		19553	20	68.00		78074	3
(18.26)	23/32	3213	35	(39.69)	1.9/16	19553	20	(68.26)	2.11/16	78074	3
19.00		3673	35	40.00		19553	20	69.00		81888	3
(19.05)	3/4	3673	35	41.00		21551	20	(69.85)	2.3/4	83423	3
(19.84)	25/32	3687	35	(41.27)	1.5/8	21551	20	70.00		83423	3
20.00		3687	35	42.00		22189	20	71.00		85073	3
(20.64)	13/16	3945	35	(42.86)	1.11/16	22903	20	(71.44)	2.13/16	85073	3
21.00		3945	35	43.00		22903	20	72.00		88963	3
(21.43)	27/32	4169	35	44.00		24209	20	73.00		92260	3
22.00		4169 **	35	(44.45)	1.3/4	24209	20	(73.02)	2.7/8	92260	3
(22.22)	7/8	4424	35	45.00		25065	20	74.00		95750	3
23.00		4685	35	46.00		25993	10	(74.61)	2.15/16	95750	3
(23.02)	29/32	4685	35	(46.04)	1.13/16	25993	10	75.00		99277	3
(23.81)	15/16	5112	35	47.00		27009	10	76.00		104045	3
24.00		5366	35	(47.62)	1.7/8	28403	10	(76.20)	3	104045	3
(24.61)	31/32	5366	35	48.00		28403	10				
25.00		6210	35	49.00		30329	10				
(25.40)	1	6210	35	(49.21)	1.15/16	30329	10				
26.00		6701	35	50.00		32637	10				
(26.19)	1.1/32	6701	35	(50.80)	2	36088	5				

Size upto 25/32" (20 mm) with 3 flutes and above 25/32" (20 mm) and upto 75 mm with 4 flutes and above 75.0 mm will be supplied with 6 flutes.

We can also manufacture and supply

"Hurricane"[®]
HARDWARE DRILLS



"TURBO"[®]
MASONRY DRILLS



HSS REAMERS



HSS TAPS



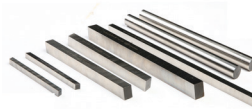
HSS END MILLS



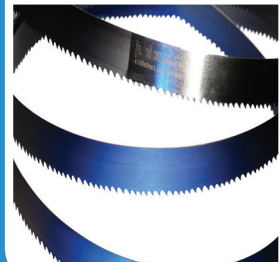
HSS MILLING CUTTERS



HSS TOOL BITS



ADDISON junior[®]
BI-METAL BAND
SAW BLADES



HSS BROACHES & HOBS



SOLID CARBIDE TOOLS



Addison & Co., Ltd.

(A member of the Amalgamations Group)

Registered Office : 803, Anna Salai, Chennai - 600 002. India. Telephone : +91-44-3027 7037 | E-mail: mpm@addison.co.in

Works : F65B, "SIPCOT" Industrial Park, Irungattukottai, Sriperumpudur Taluk, Kanchipuram Dist. Tamil Nadu - 602 117.
Phone: +91-44-3718 0067 & +91-44-3718 0035

For quotations: customersupport@addison.co.in, For other queries: customerservice@addison.co.in

www.addison.co.in

GSTIN NO. 33AAACA5199H1ZP