

RTDLS/RNTDLS RTDFH/RNTDFH

Torque Screwdriver
with Tightening Verification Signal



RTDLS120CN



RNTDLS500CN



RTDFH120CN



RNTDFH500CN



CNA-4mk3



R-FH256

- Rotary slip function prevents over-torque
- Toggle clutch torque detection mechanism for enhanced durability
- Upon reaching set torque, a completion signal is sent to counter/receiver
- Establish a torque verification system on your assembly line by connecting the signals to a PLC



Specifications

RTDLS/RNTDLS Wired Error-proofing Torque Screwdriver

RoHS

2 wire contact output when set torque is reached

Accuracy +/-3%



RTDLS120CN



RNTDLS500CN

Model	Min.-Max.	1 Grad.
	cN·m	
RTDLS120CN	20-120	1
RTDLS260CN	60-260	2
RTDLS500CN	100-500	5
RNTDLS120CN	40-120	
RNTDLS260CN	100-260	-
RNTDLS500CN	200-500	

RTDFH/RNTDFH Wireless Error-proofing Torque Screwdriver

IEC 61340-5-1:2007 CE RoHS

2.4 GHz Frequency Hopping Signal ensures reliable reception

Accuracy +/-3%



RTDFH120CN



RNTDFH500CN



Figure of OK, NG LED

Model	Min.-Max.	1 Grad.
	cN·m	
RTDFH120CN	20-120	1
RTDFH260CN	60-260	2
RTDFH500CN	100-500	5
RNTDFH120CN	40-120	
RNTDFH260CN	100-260	-
RNTDFH500CN	200-500	

Optional Equipment



I/O-FH256
4 port I/O
* Option



SB-FH256
Setting box
* Option



R-FH256
Receiver
* Required

Frequency band	2.4GHz (2.402 to 2.479GHz)
Battery	DC3V CR2032 Coin type battery
Communication distance	Approx. 10 to 20m, 30-60 FT

* Contact Tohnichi for status of the wireless equipment certification acquisition.

NOTE RTDLS/RTDFH models are adjustable type. RNTDLS/RNTDFH as preset type. Bit is sold separately. Refer to Tohnichi's Catalog or Websites, for additional RTDLS/RTDFH models in Metric and English units.

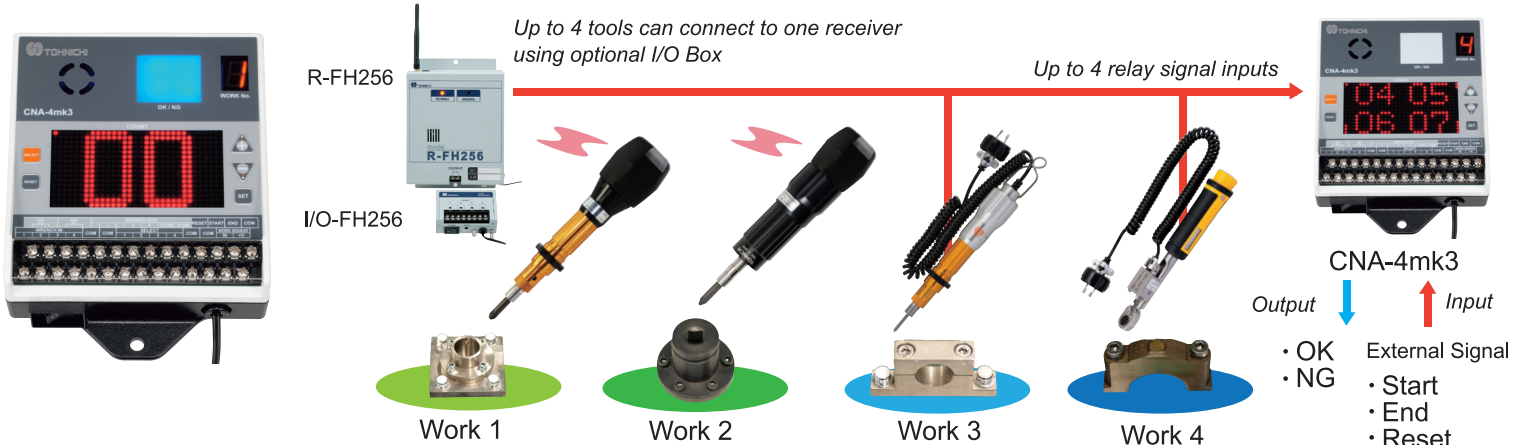
Optional Equipment

CNA-4mk3 Count Checker

Example of System Configuration

CE RoHS

For tightening count verification and production management



Max. Counter	99 counts
Timer	Double count prevention, Auto reset, Interval
Power Supply	AC 100- 240V +/-10% 50/60Hz

YouTube Product movies are available. Visit Tohnichi TV.
<https://www.youtube.com/c/TohnichiTV>

TOHNICHI MFG. CO., LTD.
 URL <http://www.global-tohnichi.com>
 E-mail overseas@tohnichi.co.jp
 N.V. TOHNICHI EUROPE S.A.
 E-mail tohnichi-europe@online.be
 TOHNICHI AMERICA CORP.
 URL <http://www.tohnichi.com>
 E-mail inquiry@tohnichi.com
 TOHNICHI SHANGHAI MFG. CO., LTD.
 URL <http://www.tohnichi-sh.com>
 E-mail sales@tohnichi-sh.com

Your Torque Partner
TOHNICHI