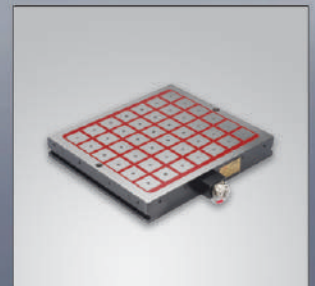


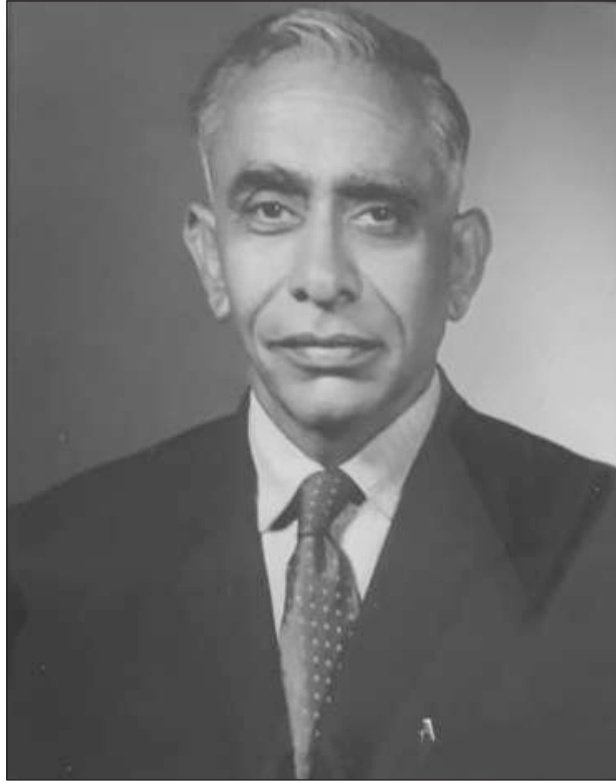


PRICE LIST

TELSHA



Inspection Instruments, Magnetic Tools & Machine Shop Aids



(L) Mr. S.R.Khurana
1915-1999

The company was founded in 1963 by our Late Mr. S.R.Khurana and developed under the leadership of Mr. B.L.Khurana and Mr. H.K.L.Khurana to design and manufacture Magnetic Working Holding Clamping Tools, Magnetic Lifting Systems, Inspection Instruments and Machine Shop Aids. Today the company is run by third generation siblings Mr. Vishal Khurana (B.E.Mechanical from D.Y.Patil College of Engineering, Pune) and Mr. Varun Khurana.

Our products mainly Magnetic Chucks are being used for clamping components during grinding on grinding machines and EPM Chucks for machining purpose on VMC's, HMC's, Plano Millers and Conventional Milling Machines. Furthermore, Our Magnetic Lifters are used in Steel Plants and Rolling Mills for lifting and handling of Plates, Billets, Slabs, Blooms, Pipes, Machine Beds, Blanks, Rounds, Moulds and Dies.

1 MAGNETIC V BLOCKS (TOP V HARDENED & GROUND)



- Used for Grinding, Light Milling, Drilling & Inspection of Round & Square Jobs.
- Accuracy for Flatness, Squareness and Parallelism within 0.005mm upto 150 L & 0.010mm for 200 L of "V"block
- The Bigger V angle & bottom holding surface are equipped with hardened strips for wear resistance.
- Uniform and strong magnetic pull to all three magnetic surfaces Top, Bottom & V face.
- Hardness of V face is 60±2 Rc.
- Easy ON- OFF facility.
- 120° " V " angle also available.

Sr. No.	Art No.	Size (mm)	Range (mm)	Pull	Price (Rs.)
1.	201.01 Soft	40 L x 40 W x 50 H [2"]	Ø 3 - Ø 25	25 kg	3500 Pair
2.	201.01 Hard	40 L x 40 W x 50 H [2"]	Ø 3 - Ø 25	25 kg	3800 Pair
3.	201.02 Soft	75 L x 56 W x 75 H [3"]	Ø 5 - Ø 40	75 kg	6800 Pair
4.	201.02 Hard	75 L x 56 W x 75 H [3"]	Ø 5 - Ø 40	75 kg	7600 Pair
5.	201.03 Soft	100 L x 70 W x 95 H [4"]	Ø 5 - Ø 65	100 kg	10400 Pair
6.	201.03 Hard	100 L x 70 W x 95 H [4"]	Ø 5 - Ø 65	100 kg	12400 Pair
7.	201.04 Soft	150 L x 75 W x 100 H [6"]	Ø 5 - Ø 70	125 kg	18000 Pair
8.	201.04 Hard	150 L x 75 W x 100 H [6"]	Ø 5 - Ø 70	125 kg	20800 Pair
9.	201.05 Soft	200 L x 125 W x 150 H [8"]	Ø 10 - Ø 140	175 kg	32000 Pair
10.	201.05 Hard	200 L x 125 W x 150 H [8"]	Ø 10 - Ø 140	175 kg	35000 Pair

2 MAGNETIC V BLOCKS (ALL SIDES HARDENED & GROUND)



- All sides are hardened & ground.
- Used for Grinding, Light Milling, Drilling & Inspection of Round & Square Jobs.
- Accuracy for Flatness, Squareness and Parallelism within 0.005mm upto 150 L & 0.010mm for 200 L of "V"block
- The Bigger V angle & bottom holding surface are equipped with hardened strips for wear resistance.
- Uniform and strong magnetic pull to all three magnetic surfaces Top, Bottom & V face.
- Hardness of V face is 60±2 Rc.
- Easy ON- OFF facility.
- 120° " V " angle also available.

Sr. No.	Art No.	Size (mm)	Range (mm)	Pull	Price (Rs.)
1.	201.06 Hard	40 L x 40 W x 50 H [2"]	Ø 3 - Ø 25	25 kg	4250 Pair
2.	201.07 Hard	75 L x 56 W x 75 H [3"]	Ø 5 - Ø 40	75 kg	8100 Pair
3.	201.08 Hard	100 L x 70 W x 95 H [4"]	Ø 5 - Ø 65	100 kg	13250 Pair
4.	201.09 Hard	150 L x 75 W x 100 H [6"]	Ø 5 - Ø 70	125 kg	22250 Pair
5.	201.10 Hard	200 L x 125 W x 150 H [8"]	Ø 10 - Ø 140	175 kg	39000 Pair

3 LEAKPROOF MAGNETIC "V" BLOCKS



- Used for EDM operations on EDM Machines
- Used for Grinding, Light Milling, Drilling & Inspection of Round & Square Jobs.
- Accuracy for Flatness, Squareness and Parallelism within 0.005mm upto 120 L & 0.010mm for 170 L of "V"block
- The Bigger V angle & bottom holding surface are equipped with hardened strips for wear resistance.
- Uniform and strong magnetic pull to all three magnetic surfaces Top, Bottom & V face.
- Hardness of V face is 60±2 Rc.
- Easy ON- OFF facility.
- 120° " V " angle also available.

Art No.	Size (mm)	Range (mm)	Pull	Price (Rs.)
201.11 Hard	120 L x 70 W x 95 H	Ø 5 - Ø 65	100 kg	15200 Pair
201.12 Hard	170 L x 75 W x 100 H	Ø 5 - Ø 70	125 kg	26400 Pair

4 MAGNETIC CARBIDE V BLOCKS



- These V Blocks have carbide strips on Top V for longer life
- Used for Grinding, Light Milling, Drilling & Inspection of Round & Square Jobs.
- Accuracy for Flatness, Squareness and Parallelism within 0.005mm upto 150 L & 0.010mm for 200 L of "V"block
- Uniform and strong magnetic pull to all three magnetic surfaces Top, Bottom & V face.
- Easy ON- OFF facility.
- 120° " V " angle also available.

Sr. No.	Art No.	Size (mm)	Range (mm)	Pull	Price (Rs.)
1.	201.08 Hard	100 L x 70 W x 95 H [4"]	Ø 5 - Ø 65	100 kg	33100 Pair
2.	201.09 Hard	150 L x 75 W x 100 H [6"]	Ø 5 - Ø 70	125 kg	55600 Pair

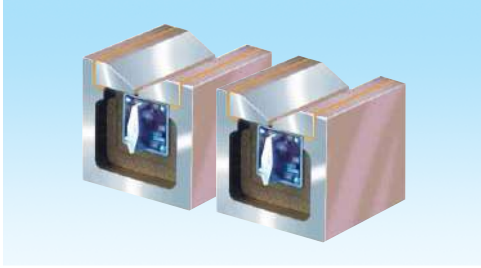
5 MAGNETIC V BLOCKS



- Used for Grinding, Light Milling, Drilling & Inspection of Round & Square Jobs.
- Accuracy for Flatness, Squareness and Parallelism within 0.005mm.
- Uniform magnetic pull along with Easy On-Off facility.
- Supplied in perfectly matched pair.
- The working surface of Hard "V" block is equipped with hardened strips for wear resistance.

Sr. No.	Art No.	Size (mm)	Range (mm)	Pull	Price (Rs.)
1.	202.01 Soft	110 L x 55 W x 75 H	Ø 5 - Ø 65	50 kg	9650 Pair
2.	202.01 Hard	110 L x 55 W x 75 H	Ø 5 - Ø 65	50 kg	13180 Pair
3.	202.02 Soft	150 L x 65 W x 100 H	Ø 5 - Ø 75	75 kg	16060 Pair
4.	202.02 Hard	150 L x 65 W x 100 H	Ø 5 - Ø 75	75 kg	18290 Pair

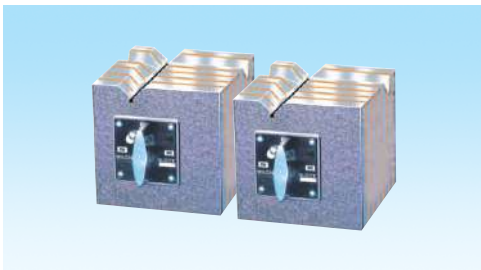
6 MAGNETIC SQUARE BLOCKS WITH 1 VEE



- Used for Grinding, Light Milling, Drilling & Inspection of Round & Square Jobs.
- Accuracy for Flatness, Squareness and Parallelism within $\pm 0.005\text{mm}$
- The V angle is equipped with hardened strips for wear resistance.
- Magnetic force on top surface & 'V' Angle
- 'V' Angle is 120°

Sr. No.	Art No.	Size (mm)	Range (mm)	Pull	Price (Rs.)
1.	201.13	75 L x 75 W x 75 H [3"]	$\emptyset 8 - \emptyset 75$	75 kg	10500 Each
2.	201.14	100 L x 100 W x 100 H [4"]	$\emptyset 10 - \emptyset 80$	100 kg	13500 Each
3.	201.15	150 L x 150 W x 150 H [6"]	$\emptyset 10 - \emptyset 110$	125 kg	14700 Each

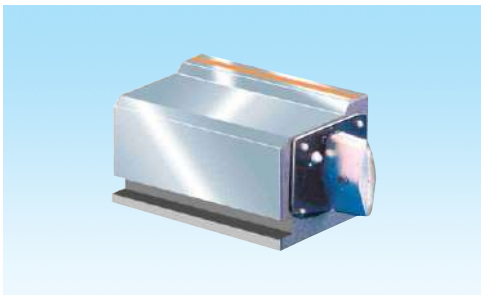
7 MAGNETIC SQUARE BLOCKS WITH 2 VEE



- Used for Grinding, Light Milling, Drilling & Inspection of Round & Square Jobs.
- Accuracy for Flatness, Squareness and Parallelism within $\pm 0.005\text{mm}$
- The V angle is equipped with hardened strips for wear resistance.
- Magnetic force is on three faces Top, Bottom and Sides.
- 'V' Angle is 120°

Sr. No.	Art No.	Size (mm)	Width of 'V' (W1)	Pull	Price (Rs.)
1.	201.16	100 L x 100 W x 100 H [4"]	20 mm	75 kg	13000 Each
2.	201.17	150 L x 150 W x 150 H [6"]	20 mm	75 kg	17850 Each

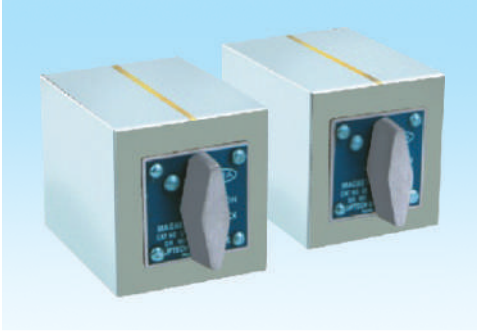
8 MAGNETIC UNIVERSAL BLOCKS



- These may be used as single, in pairs or three at a time as the application requires.
- Magnetic Universal Blocks are precision ground, accuracy for flatness, parallelism and Squareness is within 0.005 mm.

Sr. No.	Art No.	Size (mm)	Pull	Price (Rs.)
1.	201.18	75 L x 50 W x 60 H [3"]	75 kg	14000 Each

9 MAGNETIC RECTANGULAR BLOCKS



- Used for Grinding, Light Milling, Drilling & Inspection of Round & Square Jobs.
- Accuracy for Parallelism is within $\pm 0.005\text{mm}$.
- Provided with ON-OFF switch except for 1" block.
- Supplied in perfect matched pair. Harden Strips provided in hard pair.

Sr. No.	Art No.	Size (mm)	Price (Rs.)
1.	206.01 Soft	25 L x 25 W x 25 H	5800 Pair
2.	206.02 Soft	75 L x 56 W x 60 H	6300 Pair
3.	206.03 Soft	100 L x 70 W x 70 H	9900 Pair
4.	206.04 Soft	150 L x 70 W x 85 H	18400 Pair
5.	206.02 Hard	75 L x 56 W x 60 H	7500 Pair
6.	206.03 Hard	100 L x 70 W x 70 H	12000 Pair
7.	206.04 Hard	150 L x 70 W x 85 H	20500 Pair

10 ROLLER BEARING V BLOCK



- Used for checking heavy and odd shaped round jobs.
- Perfectly matched pair having accuracy 0.005mm.
- Included angle of rollers is 90°.
- Standard bearings are used which are replaceable.
- Jobs don't get damaged due to bearing on top.
- Special sizes suitable for different diameter can also be manufactured.

Art No.	Size (mm)	Range (mm)	Load Capacity	Price (Rs.)
253.01	150 L x 60W x 100 H	$\varnothing 03 - \varnothing 55$	1000 Kg	15000 Pair
253.02	150 L x 80W x 100 H	$\varnothing 25 - \varnothing 70$	500 Kg	17500 Pair
253.03	230 L x 100W x 150 H	$\varnothing 70 - \varnothing 200$	1000 Kg	19200 Pair

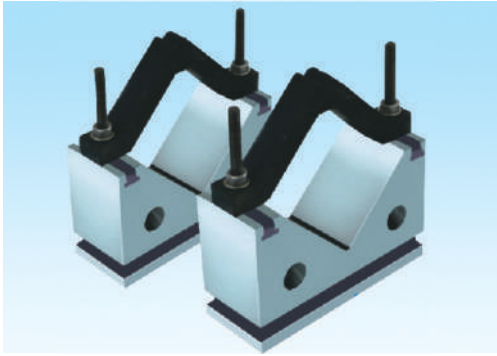
11 HARDENED & GROUND V BLOCKS



- Used for supporting of round and square jobs during Light machining, Grinding, Drilling & Inspection.
- Accuracy for Flatness, Squareness and Parallelism within $\pm 0.003\text{mm}$.
- Hardness 60 \pm 2 Rc.
- Supplied in perfect matched pair.
- Supplied with clamp.
- Can also be used for end face, side face and right angle Grinding

Art No.	Size (mm)	Range (mm)	Price (Rs.)
208.01	25 L x 20 W x 20 H	$\varnothing 3 - \varnothing 20$	5000 Pair
208.02	50 L x 40 W x 40 H	$\varnothing 5 - \varnothing 30$	6000 Pair
208.03	80 L x 63 W x 63 H	$\varnothing 7 - \varnothing 63$	7000 Pair
208.04	100 L x 80 W x 80 H	$\varnothing 7 - \varnothing 80$	8000 Pair

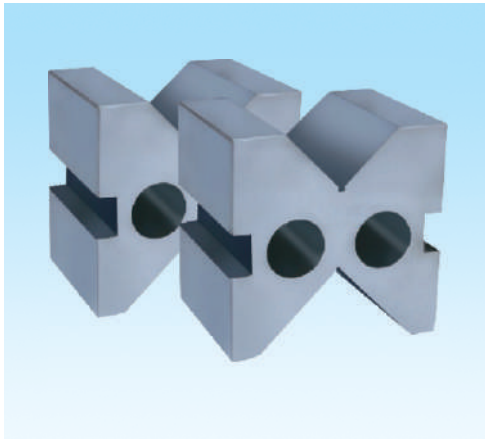
12 HARDENED & GROUND V BLOCKS



- Used for Grinding, Light Milling, Drilling & Inspection of Round & Square Jobs.
- Accuracy for Flatness, Squareness and Parallelism within $\pm 0.005\text{mm}$.
- Hardness $60\pm 2\text{ Rc}$.
- Supplied in perfect matched pair.
- Supplied with clamp which can be used from both sides to suit job dimensions.
- Holds & Clamps the heavy jobs rigidly.
- Can also be used for end face, side face and right angle Grinding

Art No.	Size (mm)	Range (mm)	Price (Rs.)
209.01	65 L x 150W x 75 H	$\varnothing 5 - \varnothing 100$	11750 Pair
209.02	65 L x 175 W x 100 H	$\varnothing 5 - \varnothing 125$	15250 Pair
209.03	75 L x 200 W x 125 H	$\varnothing 5 - \varnothing 150$	23000 Pair

13 HARDENED & GROUND V BLOCK WITH CLAMP



- Used for Grinding, Light Milling, Drilling & Inspection of Round & Square Jobs.
- Hardness $60\pm 2\text{ Rc}$.
- Supplied in perfect matched pair.
- End face grinding, square with sides can be possible.
- Two 90° "V" angle for different capacities.
- Special sizes can also be manufactured.
- Supplied with Clamp.
- 300 X 300 X 300 'V' Block made from hard cast iron

Sr. No.	Art No.	Size (mm)	Range (mm)	Price (Rs.)
1.	211.01	50 L x 40 W x 40 H	$\varnothing 5 - \varnothing 40$	6000 Pair
2.	211.02	50 L x 50 W x 50 H	$\varnothing 5 - \varnothing 50$	6500 Pair
3.	211.03	63 L x 50 W x 50 H	$\varnothing 5 - \varnothing 50$	7000 Pair
4.	211.04	63 L x 80 W x 80 H	$\varnothing 7 - \varnothing 80$	7500 Pair
5.	211.05	63 L x 100 W x 100 H	$\varnothing 8 - \varnothing 100$	9200 Pair
6.	211.06	70 L x 140 W x 140 H	$\varnothing 9 - \varnothing 140$	18500 Pair
7.	211.07	80 L x 63 W x 63 H	$\varnothing 7 - \varnothing 63$	7000 Pair
8.	211.08	100 L x 80 W x 80 H	$\varnothing 7 - \varnothing 80$	8000 Pair
9.	211.09	150 L x 200 W x 200 H	$\varnothing 10 - \varnothing 200$	60000 Pair
10.	211.10	200 L x 200 W x 200 H	$\varnothing 10 - \varnothing 200$	75000 Pair
11.	211.11	300 L x 300 W x 300 H	$\varnothing 10 - \varnothing 300$	90000 Pair

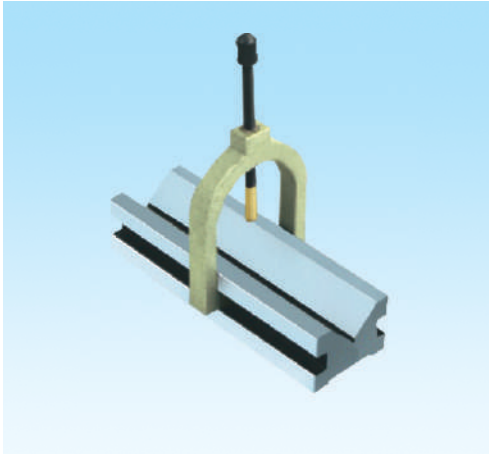
14 UNIVERSAL "V" BLOCK



- Used for Grinding, Light Milling, Drilling & Inspection of Round & Square Jobs.
- Grade A - made from alloy steel material & Hardness is $60\pm 2\text{ Rc}$.
- Grade B - made from hard cast iron & scrapped.
- Four different 90° V opening to suit various sizes.
- Supplied in perfect matched pair.
- Also available to suite your specifications.

Sr. No.	Art No.	Size (mm)	Grade A	Grade B
1.	212.01	63 L x 100 W x 100 H	9200 Pair	On Request
2.	212.02	80 L x 160 W x 160 H	18850 Pair	On Request
3.	212.03	100 L x 200 W x 200 H	28350 Pair	On Request
4.	212.04	125 L x 300 W x 300 H	60000 Pair	On Request
5.	212.05	120 L x 120 W x 60 H	11100 Pair	On Request
6.	212.06	150 L x 150 W x 75 H	16000 Pair	On Request
7.	212.07	190 L x 190 W x 90 H	23600 Pair	On Request

15 ELONGATED "V" BLOCKS



- Used for Grinding, Light Milling, Drilling & Inspection of Round & Square Jobs.
- Hardness 60±2 Rc.
- Supplied with clamps.
- Supplied in perfect matched pair.

Sr. No.	Art No.	Size (mm)	Price (Rs.)
1.	213.01	160 L x 50W x 35 H	9950 Pair
2.	213.02	200 L x 63 W x 50 H	11500 Pair
3.	213.03	300 L x 100 W x 63 H	22000 Pair
4.	213.04	100 L x 40 W x 30 H	8750 Pair
5.	213.05	200 L x 70 W x 50 H	12800 Pair
6.	213.06	300 L x 100 W x 65 H	22500 Pair

16 HARDENED & GROUND TOOL ROOM V BLOCK



- Used for Grinding, Light Milling, Drilling & Inspection of Round & Square Jobs.
- Accuracy for Flatness, Squareness and Parallelism within ±0.005mm.
- Can be used on its base, the ends & on either side.
- Hardness 60±2 Rc.
- M10 tapping at base M8 tapping on side for clamping on angle plate or face plate or on magnetic chuck.
- A clamp with cap & adjustable screws prevents tilting of block.
- A clearance hole at centre for drilling or removing of dowel pins.
- The "V" at stepped end at right angle to the base provides a handy means for holding shouldered studs, round pins etc.

Art No.	Size (mm)	Range (mm)	Price (Rs.)
214.01	48 square x 90 L.	Ø 5 - Ø 33	8000 Each

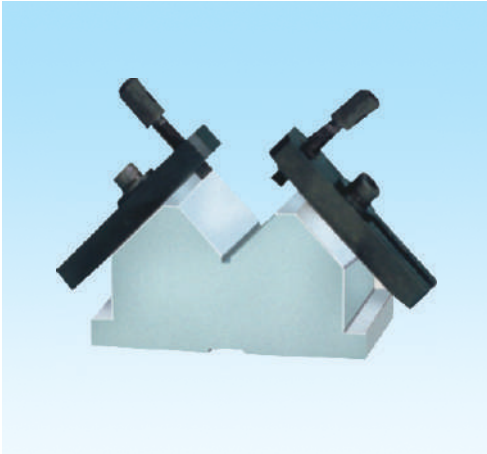
17 HARDENED & GROUND V BLOCKS



- Used for Grinding, Light Milling, Drilling & Inspection of Round & Square Jobs.
- Accuracy for Flatness, Squareness and Parallelism within 0.005mm.
- It can be used on the base, ends & sides.
- Hardness 60±2 Rc & supply in perfect matched pair.
- Clamps has tapping holes at 45° & 90° for clamping the square & round jobs.
- Stepped groove design permits clamping of small or large jobs.

Art No.	Size (mm)	Range (mm)	Price (Rs.)
215.01	65 L x 70W x 50H	Ø 5 - Ø 50 round 35 mm square.	9000 Pair

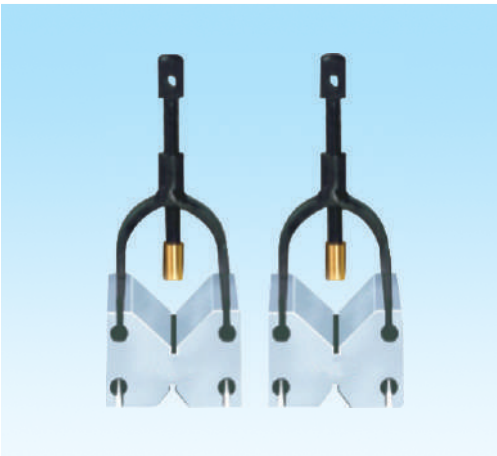
18 HARDENED & GROUND V BLOCKS



- Used for Grinding, Light Milling, Drilling & Inspection of Round & Square Jobs.
- Accuracy for Flatness, Squareness and Parallelism within $\pm 0.005\text{mm}$.
- Tenon slot (16x3) at bottom can be used for clamping on machine bed.
- Hardness $60\pm 2\text{ Rc}$.
- Entire top of V is accessible due to unique design.
- Supplied in perfect matched pair.

Art No.	Size (mm)	Range (mm)	Price (Rs.)
210.01	75 L x 120W x 60H	$\text{Ø } 5 - \text{Ø } 50$	9800 Pair
210.02	100 L x 150W x 75H	$\text{Ø } 5 - \text{Ø } 75$	14750 Pair
210.03	125 L x 200W x 100H	$\text{Ø } 5 - \text{Ø } 100$	28725 Pair

19 HARDENED & GROUND TOOL ROOM V BLOCK



- Used for Grinding, Light Milling, Drilling & Inspection of Round & Square Jobs.
- Accuracy for Flatness, Squareness and Parallelism within $\pm 0.003\text{mm}$.
- It can be used on the base, ends & sides.
- Hardness $60\pm 2\text{ Rc}$ & supplied in perfect matched pair.
- Sturdy clamps for better clamping of jobs.
- End face grinding, right angle with sides is possible.

Art No.	Size (mm)	Range (mm)	Price (Rs.)
207.01	40 L x 35 H x 45W	$\text{Ø } 3 - \text{Ø } 25$	5750 Pair
207.02	55 L x 40 H x 55 W	$\text{Ø } 3 - \text{Ø } 40$	6900 Pair
207.03	65 L x 45 H x 70 W	$\text{Ø } 5 - \text{Ø } 50$	10500 Pair
207.04	90 L x 70 H x 125 W	$\text{Ø } 5 - \text{Ø } 60$	16000 Pair

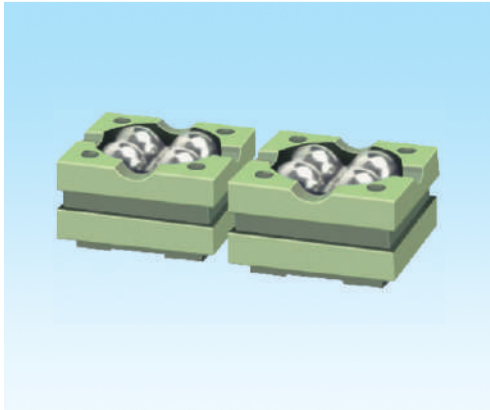
20 HARDENED & GROUND V BLOCKS WITH CLAMP



- Used for Grinding, Light Milling, Drilling & Inspection of Round & Square Jobs.
- Accuracy $\pm 0.005\text{mm}$.
- Hardness $60\pm 2\text{ Rc}$.
- Supplied in perfect matched pair
- Top angle 120°
- Bottom angle 90°
- Suitable for checking of lobbing.
- Sturdy clamps for better clamping of the job

Art No.	Size (mm)	Range (mm)	Price (Rs.)
2118.01	45 L x 120 W x 75 H	$\text{Ø } 9 - \text{Ø } 125$	8000 Pair

21 B (BALL) BLOCKS WITH CLAMP



- Used for checking of heavy round & cylindrical jobs.
- Supplied in perfectly matched pair having accuracy 0.005mm.
- Four hard steel balls on top face provides self-aligning, hard wearing, accurate support.
- Total contact area as compared to v block is more.
- Ball wearing is even, so accuracy doesn't get affected.
- Ball can be replaced and readjusted with minimum effort & cost

Art No.	Size (mm)	Load Capacity	Price (Rs.)
282.01	55 L x 55 W x 35 H	100 Kg	13500 Pair
282.02	85 L x 85 W x 45 H	500 Kg	18340 Pair
282.03	120 L x 120 W x 70 H	1000 Kg	22660 Pair

22 MAGNETIC HOLDER



- Used for holding flat & round jobs during Inspection, Grinding and Welding.
- Accuracy for Flatness, Squareness & parallelism within 0.005mm.
- ON-OFF is done by rotation of handle.
- Provides angle reference of 45°, 90° and 120°.
- Strong magnetic pull on all ground portions.
- Hardened strips provided on all working surfaces in hard blocks for wear resistance.

Art No.	Size (mm)	Pull (on "V")	Pull (on plain)	Price (Rs.)
266.01 Soft	110 L x 110 W x 140 H	100 Kg.	125 Kg.	11400 Each
266.01 Hard	110 L x 110 W x 140 H	75 Kg.	100 Kg.	14500 Each

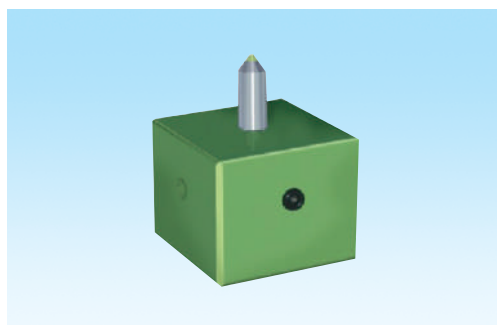
23 MAGNETIC DIAMOND DRESSER HOLDER



- Small & compact size
- Powerful holding of the magnet on the machine table.
- Easy holding of the diamond dresser.

Art No.	Size (mm)	Magnetic Pull	Price (Rs.)
2119.01	80 L x 50 W x 70 H	70 Kg.	4500 Each

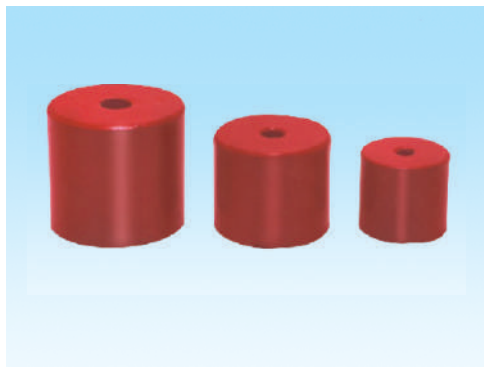
24 DIAMOND DRESSER



- Small & compact size
- Easy holding of the diamond dresser.
- To be used on grinding machine with magnetic chuck.
- Hardened & ground.

Art No.	Size (mm)	Price (Rs.)
2120.01	70 L x 70 W x 50 H	1600 Each

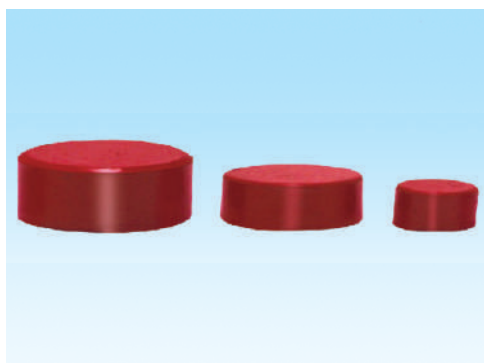
25 POT MAGNET



- Used for lifting holding & locating of ferrous parts.
- Compact design with very strong magnetic pull.
- Tapped hole on rear of magnetic face for lifting arrangement.
- Special sizes can also be manufactured.

Art No.	Size (mm)	Tapping	Pull	Price (Rs.)
268.01	Ø 18 x 16 H	M6	5 kg	On Request
268.02	Ø 22 x 20 H	M6	7 kg	On Request
268.03	Ø 27 x 25 H	M8	10 kg	On Request
268.04	Ø 35 x 30 H	M8	15 kg	On Request

26 BUTTON MAGNET



- Used for lifting holding & locating of ferrous parts.
- Compact design with very strong magnetic pull.
- Special sizes can also be manufactured.

Art No.	Size (mm)	Pull	Price (Rs.)
269.01	Ø 12 x 10 H	3 kg	On Request
269.02	Ø 20 x 12 H	5 kg	On Request
269.03	Ø 25 x 25 H	10 kg	On Request

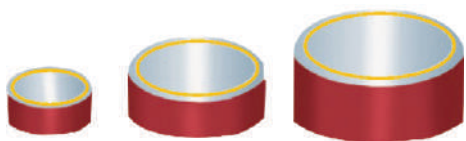
27 MAGNETIC HOLDFAST



- Used for lifting holding & locating of ferrous parts.
- The Jack-off screw also serves as a handle.
- Eye bolt for lifting.
- Special sizes can also be manufactured.

Art No.	Size (mm)	Pull	Price (Rs.)
270.01	Ø 45 x 45 H	30 kg	On Request
270.02	Ø 55 x 50 H	40 kg	On Request
270.03	Ø 70 x 65 H	50 kg	On Request
270.04	Ø 100 x 75 H	75 kg	On Request

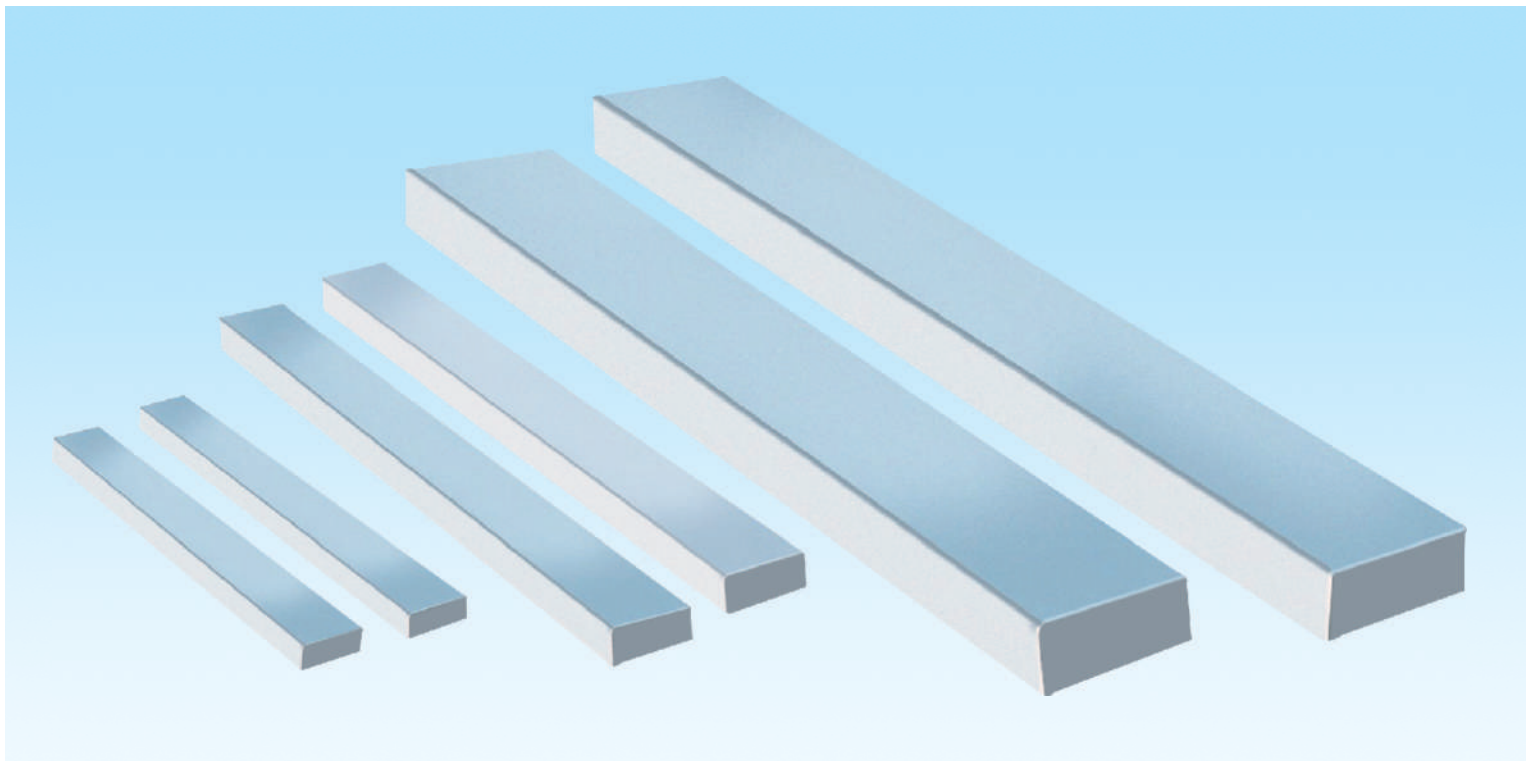
28 MAGNETIC BALANCING WEIGHT



- Used for balancing purpose.
- Compact design.
- Strong Rare Earth magnets.
- One side magnetic face.
- Weight is engraved

Art No.	Capacity	Price (Rs.)
252.01	5 gms - 2 kg	on request

29 PARALLEL BLOCKS (Sizes are nominal)



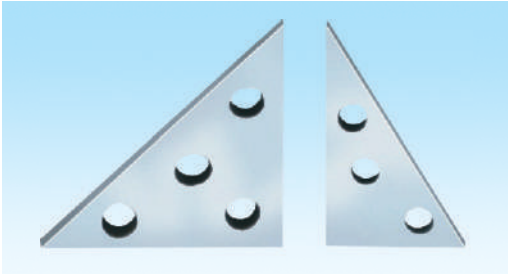
- Used for accurate supporting of jobs
Made from special quality alloy steel material.
- Hardness 60 ± 2 Rc.

- Accuracy for Parallelism, Squareness & flatness is 0.005mm upto 200mm L & 0.010mm upto 450mm L
- **Special sizes can also be manufactured.**

Sr. No.	Art No.	Size (mm)	Price (Rs.)
1	289.01	100 L x 10 W x 5 H	4500 Pair
2	289.02	100 L x 12 W x 5 H	4500 Pair
3	289.03	100 L x 15 W x 5 H	4500 Pair
4	289.04	100 L x 20 W x 5 H	4500 Pair
5	289.05	150 L x 10 W x 6 H	5500 Pair
6	289.06	150 L x 12 W x 6 H	5500 Pair
7	289.07	150 L x 15 W x 6 H	5500 Pair
8	289.08	150 L x 20 W x 6 H	5500 Pair
9	289.09	150 L x 10 W x 10 H	5500 Pair
10	289.10	150 L x 12 W x 10 H	5500 Pair
11	289.11	150 L x 15 W x 10 H	5500 Pair
12	289.12	150 L x 20 W x 10 H	5500 Pair
13	289.13	150 L x 15 W x 15 H	5500 Pair
14	289.14	150 L x 20 W x 15 H	5500 Pair
15	289.15	150 L x 25 W x 15 H	5500 Pair
16	289.16	150 L x 30 W x 15 H	5500 Pair
17	289.17	200 L x 20 W x 15 H	6500 Pair
18	289.18	200 L x 25 W x 15 H	6500 Pair
19	289.19	200 L x 30 W x 20 H	6500 Pair
20	289.20	200 L x 40 W x 20 H	6500 Pair
21	289.21	200 L x 20 W x 25 H	6500 Pair
22	289.22	200 L x 30 W x 25 H	6500 Pair
23	289.23	200 L x 40 W x 25 H	6500 Pair
24	289.24	200 L x 50 W x 25 H	6500 Pair
25	289.25	250 L x 15 W x 20 H	7500 Pair
26	289.26	250 L x 20 W x 20 H	7500 Pair

Sr. No.	Art No.	Size (mm)	Price (Rs.)
27	289.27	250 L x 25 W x 20 H	7500 Pair
28	289.28	250 L x 30 W x 20 H	7500 Pair
29	289.29	250 L x 40 W x 25 H	7500 Pair
30	289.30	250 L x 50 W x 25 H	7500 Pair
31	289.31	250 L x 50 W x 30 H	7500 Pair
32	289.32	250 L x 60 W x 30 H	7500 Pair
33	289.33	300 L x 25 W x 25 H	8500 Pair
34	289.34	300 L x 30 W x 25 H	8500 Pair
35	289.35	300 L x 40 W x 25 H	8500 Pair
36	289.36	300 L x 50 W x 25 H	8500 Pair
37	289.37	300 L x 40 W x 35 H	8500 Pair
38	289.38	300 L x 50 W x 35 H	8500 Pair
39	289.39	300 L x 60 W x 35 H	8500 Pair
40	289.40	300 L x 70 W x 35 H	8500 Pair
41	289.41	350 L x 30 W x 40 H	9500 Pair
42	289.42	350 L x 40 W x 40 H	9500 Pair
43	289.43	350 L x 50 W x 40 H	9500 Pair
44	289.44	350 L x 70 W x 40 H	9500 Pair
45	289.45	400 L x 50 W x 50 H	10500 Pair
46	289.46	400 L x 60 W x 50 H	10500 Pair
47	289.47	400 L x 75 W x 50 H	10500 Pair
48	289.48	400 L x 100 W x 50 H	10500 Pair
49	289.49	450 L x 50 W x 50 H	13500 Pair
50	289.50	450 L x 60 W x 50 H	13500 Pair
51	289.51	450 L x 75 W x 50 H	13500 Pair
52	289.52	450 L x 100 W x 50 H	13500 Pair

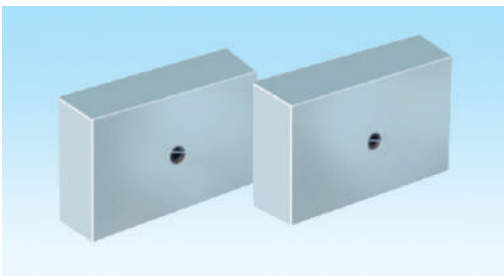
30 ANGLE BLOCKS



- Used for accurate & quick angle setting during Inspection, tool setting & machining.
- Made from special quality alloy steel material.
- Hardness 60 ± 2 Rc

Art No.	Size (mm)	Angle	Price (Rs.)
292.01	75 W x 75 H x 8T	45° & 90°	5970 Each
292.02	50 W x 85 H x 8T	30° & 60°	5970 Each

31 1-2-3 BLOCKS WITH 1 HOLE



- Used for accurate mounting & quick setting during Inspection, tool setting & machining.
- Made from alloy steel material.
- Hardness 60 ± 2 Rc.
- Accuracy for Parallelism & Squareness within 0.005mm. M8 tapped hole provided at centre.

Sr. No.	Art No.	Size (mm)	Price (Rs.)
1.	293.01	75 L x 50 W x 25 T	5890 Each

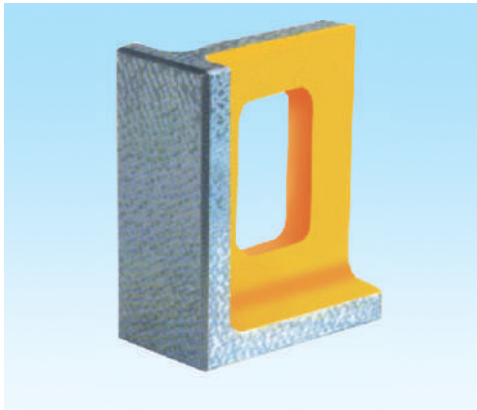
32 SUPPORT SCREW JACK



- Used for supporting the job.
- Made from good quality alloy steel material.
- Safe & reliable adjustment of height.
- Locknut for adjustment.
- Can be used with different pads.

Sr. No.	Art No.	Size (mm)	Range (mm)	Price (Rs.)
1.	256.01	Jack Ø 40	50 - 70	2990 Each
2.	256.02	Jack Ø 50	100 - 150	4100 Each
3.	256.03	Jack Ø 60	150 - 250	6200 Each
4.	256.04	Pad Ø 25	-----	1150 Each
5.	256.05	Pad Ø 25	-----	1150 Each
6.	256.06	Pad Ø 25	-----	1150 Each
7.	256.07	Pad Ø 25	-----	1150 Each
8.	256.08	Pad Ø 25	-----	1150 Each
9.	256.09	Pad Ø 25	-----	1150 Each
10.	256.10	Pad Ø 60	-----	1250 Each

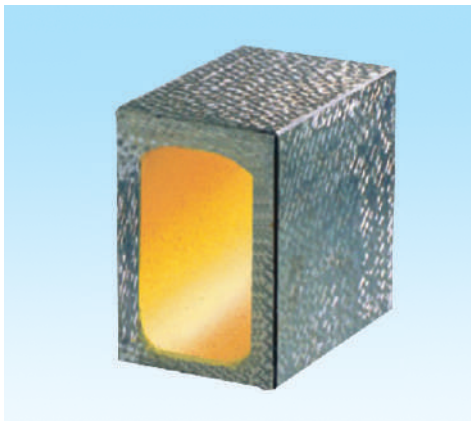
33 RIGHT ANGLE KNEE



- Used for right angle Inspection & setting of components.
- Made from dense & hard cast iron.
- Accuracy for Parallelism & Squareness within 0.005mm.
- All checking surfaces are scraped.

Art No.	Size (mm)	Price (Rs.)
258.01	200 x 150 x 80	On request
258.02	300 x 250 x 100	On request
258.03	500 x 250 x 150	On request

34 BOX PARALLEL



- Used for right angle Inspection & setting of components.
- Made from dense & hard cast iron.
- Accuracy for Parallelism & Squareness within 0.005mm.
- All checking surfaces are scraped.

Art No.	Size (mm)	Price (Rs.)
257.01	150 L x 100 W x 150 H	On request
257.02	200 L x 120 W x 300 H	On request
257.03	100 L x 100 W x 100 H	On request
257.04	150 L x 150 W x 150 H	On request
257.05	200 L x 200 W x 200 H	On request
257.06	250 L x 250 W x 250 H	On request

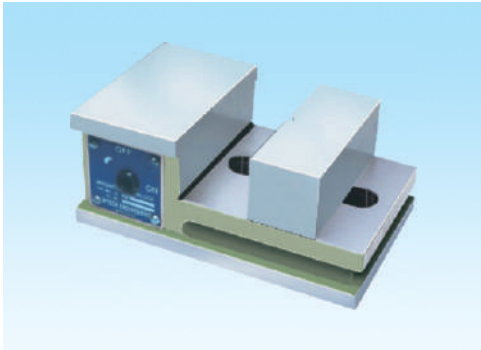
35 TOOL MAKERS PARALLEL CLAMP



- Used for holding jobs together.
- Made from hardened steel & precision ground for parallelism
- Designed for maximum strength & rigidity.
- A retaining strip hold loose job in alignment when clamp is tightened or loosened.
- The ends of the jaws are rounded to permit clamping under shoulder or in recess

Art No.	Jaw Length (mm)	Jaw Opening (mm)	Price (Rs.)
259.01	38	17	3200 Each
259.02	50	25	3300 Each
259.03	75	40	3400 Each
259.04	100	65	3700 Each
259.05	125	90	3960 Each
259.06	150	125	5040 Each
259.07	200	150	6030 Each
259.08	250	200	6840 Each
259.09	300	250	7380 Each

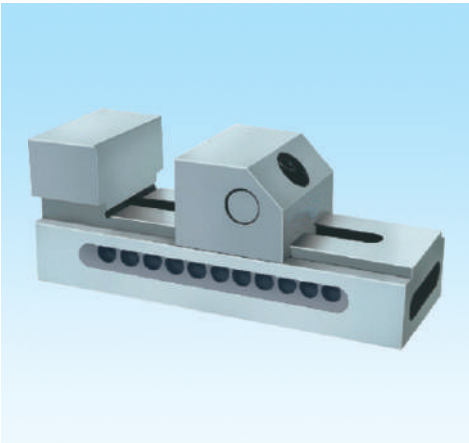
36 MAGNETIC VICE



- Used for holding flat squared & round jobs.
- Accuracy for Flatness, Squareness & parallelism within 0.005mm.
- "V" on moveable jaw facilitates end face grinding.
- Job is clamped only by resting between fixed & moveable jaw and operating On-Off switch.
- ON-OFF facility by allen key.

Art No.	Size (mm)	Jaw-Holding Area (mm) ²	Price (Rs.)
264.01	110 x 180 x 75	100 x 65	18150 Each
264.02	160 x 225 x 90	150 x 75	22250 Each

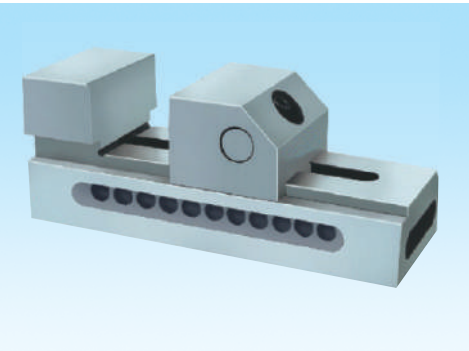
37 HARDENED AND GROUND PRECISION GRINDING VICE



- Used for holding the jobs, spark erosion operation, right angle grinding & Light machining.
- Made from high quality alloy steel.
- Accuracy for Square ness, Flatness & Parallelism within ± 0.005 mm.
- Jaw pressure on work piece is forward & downward for repeatable positioning & maximum holding power.
- All sides can be used as reference.
- Hardness 60 ± 2 Rc & Tempered.
- "V" on moveable jaw for better gripping of round jobs.

Art No.	Size (mm)	Jaw-Holding Area (mm) ²	Price (Rs.)
263.01	150 L x 48 W x 60 H	0 - 75	7000 Each
263.02	180 L x 63 W x 70 H	0 - 90	7600 Each
263.03	200 L x 73 W x 80 H	0 - 100	8850 Each
263.04	235 L x 96 W x 96 H	0 - 125	14400 Each

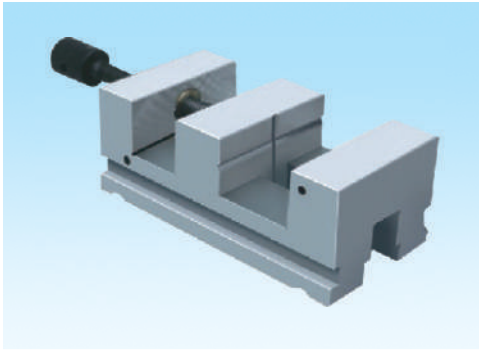
38 HARDENED AND GROUND STAINLESS STEEL GRINDING VICE



- Made from stainless steel.
- Used for holding the jobs, spark erosion operation, right angle grinding & Light machining.
- Accuracy for Square ness, Flatness & Parallelism within ± 0.005 mm.
- Jaw pressure on work piece is forward & downward for repeatable positioning & maximum holding power.
- All sides can be used as reference.
- Hardness 55 ± 2 Rc.
- "V" on moveable jaw for better gripping of round jobs.

Art No.	Size (mm)	Jaw-Holding Area (mm) ²	Price (Euro)
263.05	150 L x 48 W x 60 H	0 - 75	7200 Each
263.06	180 L x 63 W x 70 H	0 - 90	11200 Each
263.07	200 L x 73 W x 80 H	0 - 100	12700 Each
263.08	235 L x 96 W x 96 H	0 - 125	20000 Each

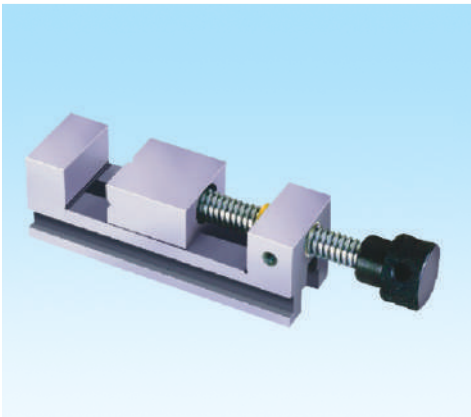
39 HARDENED AND GROUND PRECISION GRINDING (SCREW TYPE)



- Used for holding the jobs, right angle grinding & Light machining.
- Made from high quality alloy steel.
- Accuracy for Squareness, Flatness & Parallelism within $\pm 0.005\text{mm}$.
- Hardness $60 \pm 2 \text{ Rc}$ & Tempered.
- Wear Plate at bottom to prevent lifting of Jaw
- Hardened clamping screw with square thread & gun metal nut
- Tenon at bottom to allow easy alignment with machine bed

Sr. No.	Art No.	Size (mm)	Opening (mm)	Price (Rs.)
1.	2121.01	150 L x 48 W x 60 H	0 - 75	9900 Each
2.	2121.02	180 L x 63 W x 70 H	0 - 90	10750 Each
3.	2121.03	200 L x 73 W x 80 H	0 - 100	12500 Each
4.	2121.04	235 L x 96 W x 96 H	0 - 125	20300 Each

40 STAINLESS STEEL GRINDING VICE (SCREW TYPE)



- Made from Stainless steel.
- Used for holding the jobs, right angle grinding & Light machining.
- Accuracy for Squareness, Flatness & Parallelism within $\pm 0.005\text{mm}$.
- Hardness $55 \pm 2 \text{ Rc}$.
- Wear Plate at bottom to prevent lifting of Jaw.
- Hardened clamping screw with square thread & gun metal nut.
- Tenon at bottom to allow easy alignment with machine bed.

Sr. No.	Art No.	Size (mm)	Opening (mm)	Price (Rs.)
1.	2121.05	150 L x 48 W x 60 H	0 - 75	10500 Each
2.	2121.06	180 L x 63 W x 70 H	0 - 90	13800 Each
3.	2121.07	200 L x 73 W x 80 H	0 - 100	17200 Each
4.	2121.08	235 L x 96 W x 96 H	0 - 125	30800 Each

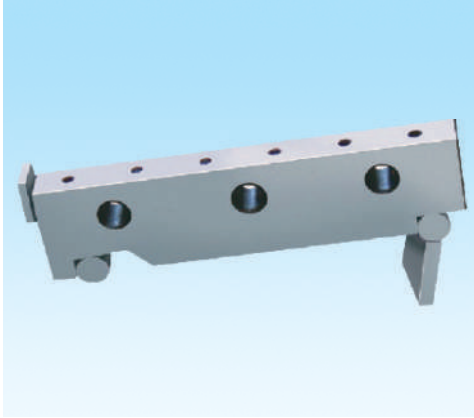
41 SINE VICE



- Used for Precision measurement, setting of angles, Right angle grinding & light machining.
- Made from high quality alloy steel.
- Accuracy for Squareness, Flatness & Parallelism is $\pm 0.005\text{mm}$ upto 200L & 0.010mm upto 350L
- Angular accuracy within ± 5 seconds.
- Centre distance between rollers is within $\pm 0.005\text{mm}$
- Hardness $60 \pm 2 \text{ Rc}$ & Tempered

Art No.	Size (mm)	C.D. (mm)	Opening (mm)	Price (Rs.)
2122.01	150 L x 48W x 88 H	125	0- 75	12300 Each
2122.02	180 L x 63W x 98 H	150	0- 90	16600 Each
2122.03	200 L x 73W x 108 H	175	0-100	19500 Each
2122.04	235 L x 96W x 130 H	200	0-125	26100 Each

42 SINE BAR



- Used for Precision measurement, setting of angles.
- Made from high quality alloy steel.
- Accuracy for Squareness, Flatness & Parallelism is within 0.005mm upto 200mm & 0.010mm upto 350mm
- Centre distance between rollers is within ± 0.003 mm
- Hardness - 60 ± 2 Rc & Tempered
- Accuracy as per IS Standards IS - 5359 - 1987

Art No.	Size (mm)	C.D (in mm)	Price (Rs.)
2123.01	130 L x 25W x 30 H	100	13500 Pair
2123.02	245 L x 40W x 60 H	200	16500 Pair
2123.03	350 L x 55W x 80 H	300	19500 Pair

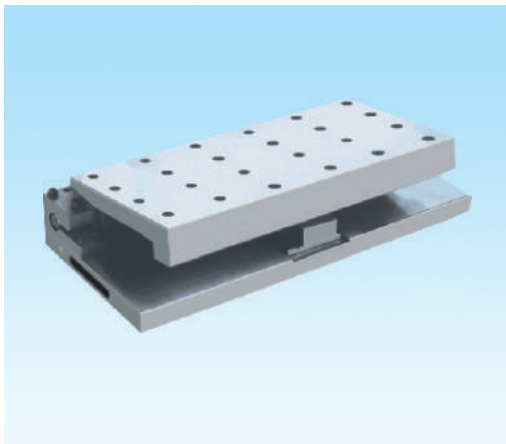
43 MAGNETIC SINE BAR



- Used for Precision measurement, setting of angles.
- Made from high quality alloy steel.
- Accuracy for Squareness, Flatness & Parallelism is within 0.005mm upto 200mm & 0.010mm upto 350mm
- Centre distance between rollers is within ± 0.003 mm
- Hardness - 60 ± 2 Rc & Tempered.
- Top surface is provided with magnet.
- Accuracy as per IS Standards IS - 5359 - 1987

Art No.	Size (mm)	C.D (in mm)	Price (Rs.)
2124.01	130 L x 25W x 30 H	100	16500 Pair
2124.02	245 L x 40W x 60 H	200	19500 Pair
2124.03	350 L x 55W x 80 H	300	22500 Pair

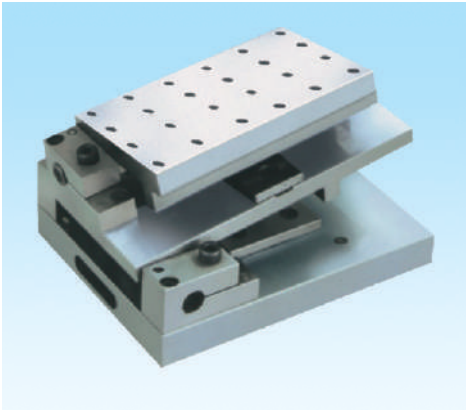
44 SINE TABLE



- Used for Precision measurement, setting of angles utilizing slip gauge & light machining.
- Accuracy for squareness, Parallelism & flatness is 0.005mm upto 200L & 0.010mm upto 450L.
- Angle can be set within ± 5 seconds.
- Centre Distance between rollers is within 0.005mm.
- Made from high quality alloy steel
- Hardness 60 ± 2 Rc & Tempered.
- Firm hinged clamp to reduce possibility of distortion.
- M6 & M8 tapped holes for job clamping.

Art No.	Size (mm)	Centre Distance (mm)	Inclination	Price (Rs.)
247.01	150 L x 120 W x 85 H	70	0 - 45°	14000 Each
247.02	250 L x 150 W x 85 H	100	0 - 45°	24900 Each
247.03	300 L x 150 W x 85 H	100	0 - 45°	34250 Each
247.04	450 L x 150 W x 85 H	100	0 - 45°	47250 Each

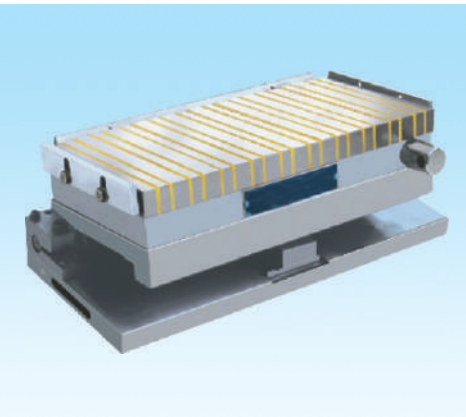
45 COMPOUND SINE TABLE



- **Compound Angle facility.**
- Used for Precision measurement, setting of angles & Light machining.
- Accuracy for Squareness, Flatness & Parallelism within 0.005mm upto 200L & 0.010mm upto 450L.
- Angle can be set within ± 5 seconds.
- Centre Distance between rollers is within 0.005mm.
- Made from high quality alloy steel.
- Hardness 60 ± 2 Rc & Tempered.
- Firm hinged clamp to reduce possibility of distortion.
- M6 & M8 tapped holes for job clamping.

Art No.	Size (mm)	Bottom C.D.	Top C.D.	Price (Rs.)
248.01	150 L x 100 W x 125 H	100 mm	70/50 mm	25000 Each
248.02	250 L x 150 W x 125 H	200/150 mm	100 mm	38000 Each
248.03	300 L x 150 W x 125 H	200 mm	100 mm	50000 Each
248.04	450 L x 150 W x 125 H	300 mm	100 mm	58000 Each

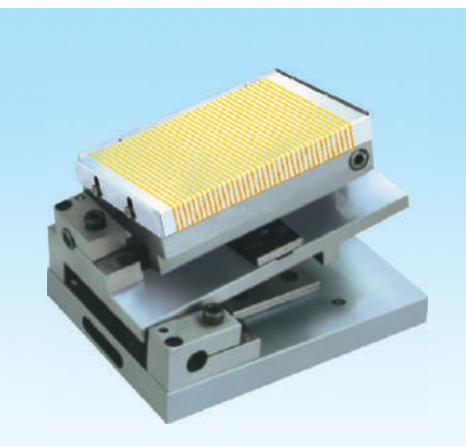
46 MAGNETIC SINE TABLE



- Used for Precision measurement, setting of angles & Light machining.
- Accuracy for Squareness, Flatness & Parallelism within 0.005mm upto 200L & 0.010mm upto 450L.
- Angle can be set within ± 5 seconds.
- Centre Distance between roller is within 0.005mm.
- Made from high quality alloy steel
- Hardness 60 ± 2 Rc & Tempered.
- **Magnetic Table for job holding.**
- Firm hinged clamp to reduce possibility of distortion.

Art No.	Size (mm)	Centre Distance	Inclination	Price (Rs.)
249.01	150 L x 120 W x 140 H	70 mm	0 - 45°	29250 Each
249.02	250 L x 150 W x 140 H	100 mm	0 - 45°	37000 Each
249.03	300 L x 150 W x 140 H	100 mm	0 - 45°	44900 Each
249.04	450 L x 150 W x 140 H	100 mm	0 - 45°	54250 Each
249.05	400 L x 200 W x 140 H	150 mm	0 - 45°	65790 Each

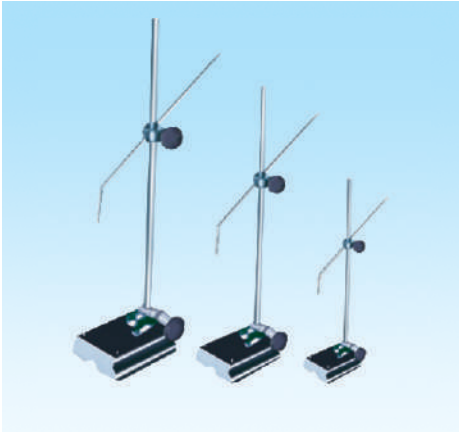
47 MAGNETIC COMPOUND SINE TABLE



- **Compound Angle facility.**
- Used for Precision measurement, setting of angles & Light machining.
- Accuracy for Squareness, Flatness & Parallelism within 0.005mm upto 200L & 0.010mm upto 450L.
- Angle can be set within ± 5 seconds.
- Centre Distance between rollers is within 0.005mm.
- Made from high quality alloy steel
- Hardness 60 ± 2 Rc & Tempered.
- Magnetic Table for job holding.
- Firm hinged clamp to reduce possibility of distortion.

Art No.	Size (mm)	Bottom C.D. (mm)	Top C.D. (mm)	Price (Rs.)
250.01	150 L x 100 W x 170 H	100	50/70	35500 Each
250.02	250 L x 150 W x 170 H	150/200	100	52500 Each
250.03	300 L x 150 W x 170 H	200	100	56900 Each
250.04	450 L x 150 W x 170 H	300	100	70000 Each
250.05	400 L x 200 W x 170 H	250/300	150	86500 Each

48 UNIVERSAL SURFACE GAUGE



- Used for marking & transferring measurement.
- Ground base for accurate reference surfaces.
- V groove on the front end which allows the spindle to adjust to any angle above or below the base.
- V groove in the base for cylindrical work.
- A very positive fine adjustment through a rocker arm that makes smooth & accurate setting.
- Grooves on the side of the base for a sure & easy grip.
- Dial indicator can also be used.
- Two gauge pins facilitate easy linear marking.

Art No.	Size (mm)	Height (mm)	Price (Rs.)
218.01	80 L x 65 W x 300 H [12"]	300	2300 Each
218.02	100 L x 85 W x 450 H [18"]	450	3400 Each
218.03	110 L x 90 W x 600 H [24"]	600	5450 Each

49 HEAVY DUTY SURFACE GAUGE



- Used for marking & transferring measurement.
- Base & scriber are made from hardened steel.
- Robust construction.
- Fine adjustment for smooth & accurate setting.
- Dial indicator can also be used.

Art No.	Size (mm)	Height (mm)	Price (Rs.)
219.01	130 L x 105 W x 35 H	600 mm	9150 Each
219.02	160 L x 130 W x 40 H	1000 mm	14680 Each

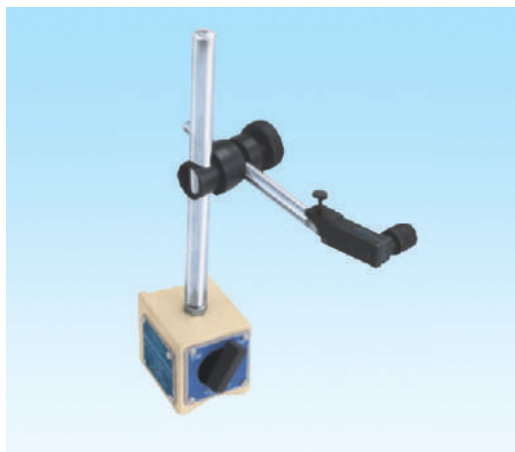
50 HEAVY DUTY DIAL INDICATOR STAND



- Used as holding device for dial indicator.
- Heavy & rigid construction.
- Column can move to & fro to full base length.
- Fine adjustment for accurate setting.
- Both faces of base can be used.

Art No.	Base Size (mm)	Height of Column (mm)	Max. Horizontal Ext. (mm)	Price (Rs.)
220.01	250 L x 45 W	300	350	7500 Each
220.02	300 L x 100 W	300	350	9000 Each
220.03	300 L x 100 W	500	350	12500 Each
220.04	350 L x 100 W	800	350	15500 Each

51 MAGNETIC BASE



- Used as holding device for dial indicator
- Base "V" can be clamped to shaft of $\varnothing 20$ to $\varnothing 120$.
- Fine adjustment for accurate settings.
- Powerful magnetic base holds firmly to ferrous surfaces vertically, horizontally, upside-down.
- ON - OFF facility.

Art No.	Base Size (mm)	Overall Height (mm)	Pull	Price (Rs.)
222.01	65 L x 48 W x 55 H	275	55 kg	3000 Each

52 MAGNETIC BASES



- Used as holding device for dial indicator.
- Heavy & rigid construction.
- Fine adjustment for accurate setting.
- Can hold 8mm & 6mm stem diameter of dial.
- Powerful magnetic base holds firmly to ferrous surfaces vertically, horizontally, upside-down.
- Push button turns magnetic force ON- OFF for quick, one-hand set-up and take-down.
- Clamp assembly made out of phosphor bronze

Art No.	Base Size (mm)	Overall Height (mm)	Pull	Price (Rs.)
225.01	63 L x 63 W x 75 H	235 mm	55 kg	8200 Each

53 MAGNETIC BASES



- Used as holding device for dial indicator.
- Heavy & rigid construction.
- Base V can be clamped to shaft of $\varnothing 20$ to $\varnothing 120$
- Fine adjustment for accurate setting.
- Can Hold 8mm & 6mm stem diameter of dial.
- Powerful magnetic base holds firmly to ferrous surfaces vertically, horizontally, upside-down.
- ON - OFF facility.

Art No.	Base Size (mm)	Overall Height (mm)	Pull	Price (Rs.)
221.01	56 L x 70 W x 70 H	220 mm	70 kg	6500 Each

54 MAGNETIC BASES



- Used as holding device for dial indicator.
- Heavy & rigid construction of base & column.
- Four strong magnetic faces.
- Base V can be clamped to shaft of $\varnothing 20$ to $\varnothing 150$
- Fine adjustment for accurate setting.
- Can hold 8mm dial.
- ON - OFF facility.

Art No.	Base Size (mm)	Main Column	Extension Arm	Pull	Price (Rs.)
226.01	65 L x 56 W x 70 H	$\varnothing 18 \times 200$ mm	$\varnothing 18 \times 220$ mm	90 kg	9500 Each

55 MAGNETIC BASES



- Used as holding device for dial indicator.
- Heavy & rigid construction.
- Base V can be clamped to shaft of $\varnothing 20$ to $\varnothing 120$
- Fine adjustment for accurate setting.
- Can hold 8mm & 6mm stem diameter of dial.
- Two extension arm gives more flexibility in inspection.

Art No.	Base Size (mm)	Overall Height	Main Shaft	Pull	Price (Rs.)
224.01	70 L x 48 W x 64 H	275 mm	$\varnothing 18 \times 210$ mm	70 kg	4500 Each

56 MAGNETIC BASES



- Used as holding device for dial indicator.
- Push button type ON-OFF switch.
- Can hold 8mm & 6mm stem diameter of dial.
- Light duty dial stand.

Art No.	Base Size (mm)	Overall Height	Main Shaft	Pull	Price (Rs.)
223.01	48 L x 42 W x 49 H	220 mm	$\varnothing 12.7 \times 185$ mm	40 kg	2000 Each

57 MAGNETIC BASES



- Used as holding device for dial indicator.
- Permanent magnet base without ON-OFF.
- Can hold 6mm & 8mm stem diameter of dial.
- Light duty dial stand.
- 227.01 has an extension arm.

Art No.	Base Size (mm)	Overall Height	Main Shaft	Pull	Price (Rs.)
227.01	Ø 41 x 38 H	220 mm	Ø12.5 x 180 mm	25 kg	2000 Each
228.01	Ø 28 x 25 H	90 mm	-----	15 kg	2000 Each
230.01	Ø 28 x 25 H	90 mm	-----	10 kg	2000 Each

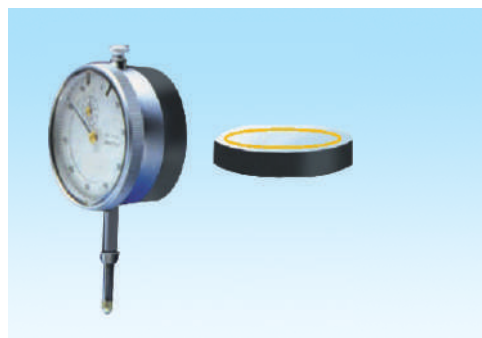
58 MAGNETIC LAMP



- Heavy & rigid construction of base.
- Can be locked to any position.
- Base "V" can be clamped to shaft of Ø 20 to Ø 120.
- ON - OFF facility.

Art No.	Base Size (mm)	Overall Height	Pull	Price (Rs.)
2125.01	120 L x 85 W x 130 H	350	70 kg	7500 Each

59 MAGNETIC BASES



- Used as holding device for dial indicator.
- The magnetic base is directly mounted at the back of dial & this assembly can be clamped to any fixed position.

Art No.	Base Size (mm)	Pull	Price (Rs.)
229.01	Ø 56 x 15 T	10 kg	2500 Each

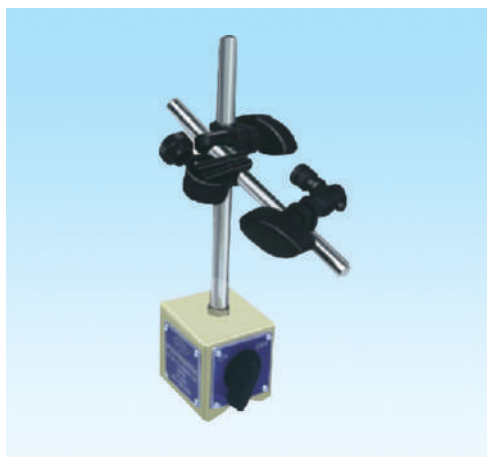
60 MAGNETIC BASES



- Used as holding device for dial indicator.
- Base V can be clamped to shaft of Ø20 to Ø120 .
- Strong magnetic field, so it can be clamped to any part vertically & horizontally.
- ON-OFF facility.

Art No.	Base Size (mm)	Overall Height	Main Shaft	Pull	Price (Rs.)
231.01	60 L x 50 W x 55 H	230 mm	Ø12 x 180 mm	50 kg	2600 Each

61 MAGNETIC BASES WITH FINE ADJUSTMENT



- Used as holding device for dial indicator.
- Heavy & rigid construction of base & column.
- Base V can be clamped to shaft.
- Fine adjustment for accurate setting.
- ON - OFF facility.

Art No.	Base Size (mm)	Overall Height	Main Shaft	Pull	Price (Rs.)
232.01	60 L x 50 W x 55 H	230 mm	Ø12 x 180 mm	50 kg	3000 Each

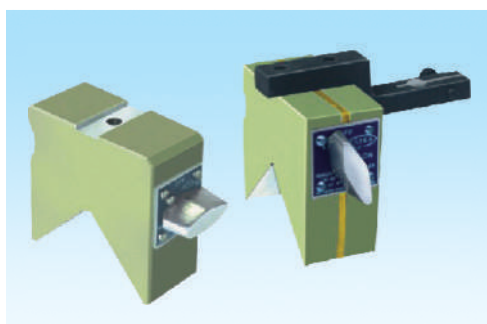
62 UNIVERSAL CLAMPING MAGNETIC BASE WITH FINE ADJUSTMENT



- Used as holding device for dial indicator.
- Heavy & rigid construction of base & column.
- Can be locked to any position in 360° by a Central lock.
- Dovetail slot for lever type dial.
- Fine adjustment for accurate setting.
- Base V can be clamped to shaft of Ø20 to Ø120.
- Can Hold 8mm & 6mm stem diameter of dial.

Art No.	Base Size (mm)	Overall Height	Pull	Price (Rs.)
233.01	60L x 50 W x 55 H	230	50 kg	3950 Each
234.01	70 L x 48 W x 64 H	230	70 kg	4950 Each

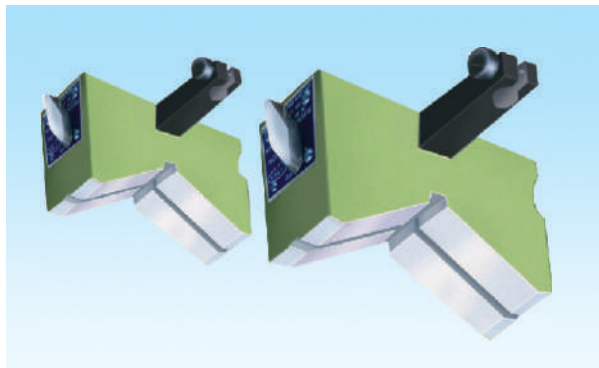
63 MAGNETIC TOOL SETTING GAUGE



- Used with boring bar for presetting of cutting tool.
- Change in setting of the tool measures variation in bore dimension.
- Suitable clamp is provided for holding dial indicator (for 285.01 & 285.02)
- Powerful magnet with ON-OFF facility.
- "V" is hardened & ground within 5 microns.
- The included angle of V is 90°.
- Hardness 52 - 56 Rc.
- Can be manufactured as per customer's requirement.

Sr. No.	Art No.	Size (mm)	Slot (mm)	Range (mm)	Price (Rs.)
1.	284.01	72 L x 68 H x 35 T	14 x 2	Ø 25 - Ø 70	9170 Each
2.	284.02	76 L x 75 H x 35 T	14 x 2	Ø 35 - Ø 90	9530 Each
3.	284.03	80 L x 75 H x 40 T	14 x 2	Ø 40 - Ø 105	9890 Each
4.	285.01	100 L x 85 H x 40 T	14 x 2	Ø 40 - Ø 125	10260 Each
5.	285.02	120 L x 90 H x 40 T	14 x 2	Ø 110 - Ø 180	10630 Each

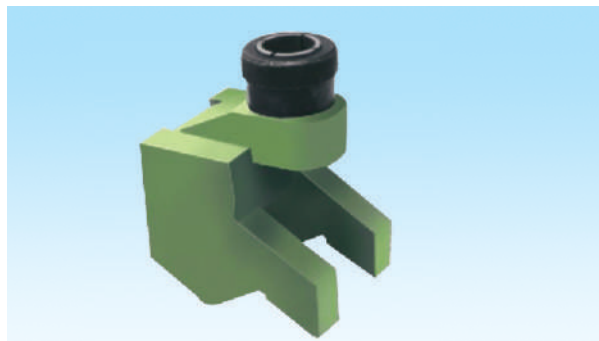
64 MAGNETIC TOOL SETTING GAUGE



- Used with boring bar for presetting of cutting tool.
- Change in setting of the tool measures variation in bore dimension.
- Suitable clamp is provided for holding dial indicator.
- Powerful magnet with ON-OFF facility.
- "V" is hardened & ground within 5 micron.
- The included angle of V is 120°.
- Hardness 52 - 56 Rc.
- Can be manufactured as per customer's requirement.

Sr. No.	Art No.	Base Size (mm)	Range (mm)	Price (Rs.)
1.	283.01	60 L x 60 H x 30 T	Ø 10 - Ø 50	9600 Each
2.	283.02	80 L x 80 H x 30 T	Ø 10 - Ø 90	9750 Each
3.	283.03	100 L x 100 H x 35 T	Ø 10 - Ø 110	9900 Each

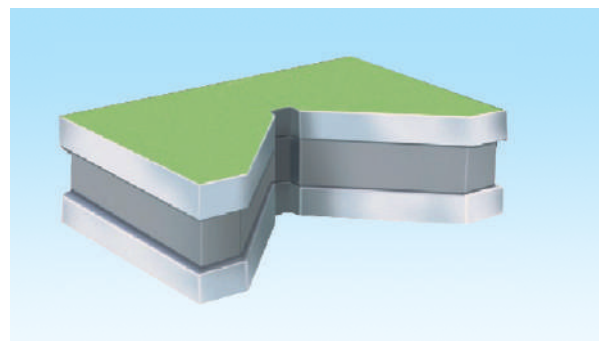
65 MAGNETIC TOOL SETTING GAUGE



- Used with boring bar for presetting of cutting tool.
- Change in setting of the tool measures variation in bore dimension.
- Powerful magnet without ON-OFF facility.
- "V" is hardened & ground within 5 micron.
- The included angle of V is 90°.
- Hardness 52 - 56 Rc.
- Dial bore is ground in one central line.

Sr. No.	Art No.	Size (mm)	Range (mm)	Price (Rs.)
1.	287.01	50 L x 60 H x 50 T	Ø 15 - Ø 60	9000 Each

66 MAGNETIC TOOL SETTING GAUGE



- Used with boring bar for presetting of cutting tool
- Change in setting of the tool measures variation in bore dimension.
- Powerful magnet without ON-OFF facility.
- "V" is hardened & ground within 5 micron.
- The included angle of V is 120°.
- Hardness 52 - 56 Rc.
- Can be manufactured as per customer's requirement.

Sr. No.	Art No.	Size (mm)	Range (mm)	Price (Rs.)
1.	288.01	100 L x 50 H x 25 T	Ø 20 - Ø 90	7500 Each
2.	288.02	110 L x 45 H x 22 T	Ø 20 - Ø 75	8500 Each
3.	288.03	90 L x 40 H x 22 T	Ø 45 - Ø 100	9500 Each

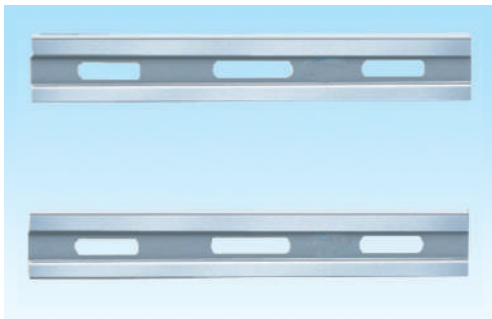
67 HARDENED & GROUND KNIFE-EDGE STRAIGHT EDGE



- Used for checking flatness & straightness of surfaces.
- Made from high quality tool steel.
- Knife edge provides an excellent visual line contact with the work piece.
- Hardness 60 ± 2 Rc.
- Packed in individual wooden box.

Sr. No.	Art No.	Size (mm)	Price (Rs.)
1	295.01	50L x 30W x 8T [2"]	3900 Each
2	295.02	75L x 35W x 8T [3"]	4900 Each
3	295.03	100L x 40W x 10T [4"]	5900 Each
4	295.04	150L x 40W x 10T [6"]	7900 Each
5	295.05	200L x 50W x 12T [8"]	8900 Each
6	295.06	250L x 50W x 12T [10"]	9900 Each
7	295.07	300L x 60W x 12T [12"]	11000 Each
8	295.08	500L x 50W x 15T [20"]	12000 Each
9	295.09	600L x 60W x 20T [24"]	14500 Each

68 HARDENED & GROUND STEEL STRAIGHT EDGE



- Used for checking flatness & straightness of surfaces.
- Made from high quality tool steel.
- Hardness 60 ± 2 Rc.
- Plastic head insulator.
- Packed in individual wooden box.

Sr. No.	Art No.	Size (mm)	Price (Rs.)
1.	296.01	100 L x 15 H x 5 T [4"]	5900 Each
2.	296.02	160 L x 20 H x 8 T [6"]	7900 Each
3.	296.03	300 L x 35 H x 12 T [12"]	9900 Each
4.	296.04	500 L x 50 H x 15 T [20"]	11700 Each
5.	296.05	800 L x 80 H x 20 T [32"]	15000 Each
6.	296.06	1000 L x 100 H x 20 T [40"]	21000 Each

69 HARDENED & GROUND TRY-SQURE FLAT EDGE WITHOUT STOCK



- Used for checking Squareness & straightness.
- Made from single piece high quality tool steel.
- Hardness 60 ± 2 Rc.
- A groove on the inner corner of the stock, aids in the clearance of burr or dirt.
- Packed in individual wooden box.

Sr. No.	Art No.	Size (mm)	Price (Rs.)
1	235.01	50 L x 30 H x 4 T [2"]	6020 Each
2	235.02	75 L x 50 H x 4.5 T [3"]	6460 Each
3	235.03	100 L x 70 H x 5 T [4"]	6820 Each
4	235.04	150 L x 100 H x 6 T [6"]	7100 Each
5	235.05	200 L x 140 H x 7 T [8"]	9400 Each
6	235.06	250 L x 165 H x 8 T [10"]	10000 Each
7	235.07	300 L x 200 H x 8 T [12"]	11700 Each
8	235.08	400 L x 250 H x 10 T [16"]	14500 Each

70 HARDENED & GROUND BEVELLED EDGE (TRY-SQUARE)



- Used for checking Square ness & straightness.
- Made from single piece high quality tool steel.
- Inner & outer edges of blade are bevelled at 60° angle .
- Bevelled edge provides an excellent visual line contact with the workpiece.
- Hardness 60 ± 2 Rc.
- A groove on the inner corner of the stock, aids in the clearance of burr or dirt.
- Packed in individual wooden box.

Sr. No.	Art No.	Size (mm)	Price (Rs.)
1.	236.01	50 L x 35 W x 4 T [2"]	6150 Each
2.	236.02	75 L x 50 W x 4.5 T [3"]	6620 Each
3.	236.03	100 L x 70 W x 5 T [4"]	7025 Each
4.	236.04	150 L x 100 W x 6 T [6"]	7400 Each
5.	236.05	200 L x 140 W x 7 T [8"]	9800 Each
6.	236.06	250 L x 165 W x 8 T [10"]	10500 Each
7.	236.07	300 L x 200 W x 8 T [12"]	12250 Each
8.	236.08	400 L x 250 W x 10 T [16"]	15000 Each

71 HARDENED & GROUND WITH STOCK TRY-SQUARE



- Used for checking Squareness & straightness.
- Made from single piece high quality tool steel.
- Hardness 60 ± 2 Rc.
- A groove on the inner corner of the stock, aids in the clearance of burr or dirt.
- Packed in individual wooden box.

Sr. No.	Art No.	Size (mm)	Price (Rs.)
1.	237.01	100 L x 70 W x 10 T [4"]	6820 Each
2.	237.02	150 L x 100 W x 12 T [6"]	7100 Each
3.	237.03	200 L x 140 W x 15 T [8"]	9250 Each
4.	237.04	250 L x 165 W x 20 T [10"]	9900 Each
5.	237.05	300 L x 200 W x 20 T [12"]	11600 Each
6.	237.06	400 L x 250 W x 25 T [16"]	13800 Each
7.	237.07	500 L x 300 W x 25 T [20"]	20500 Each
8.	237.08	700 L x 450 W x 30 T [28"]	27500 Each
9.	237.09	1000 L x 750 W x 40 T [40"]	57000 Each

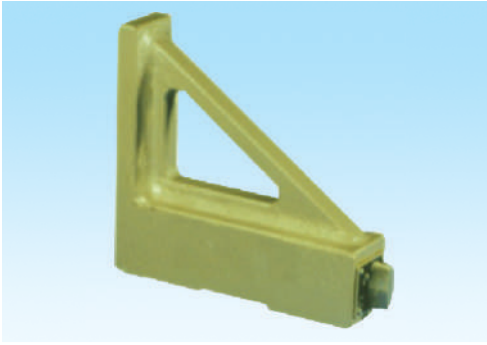
72 HARDENED & GROUND FLANGED BEAM TRY-SQUARE



- Used to check Squareness & straightness.
- Accuracy for Squareness & Flatness is within ±0.005 mm.
- Made from single piece high quality tool steel.
- Inside & outside are accurate right angles.
- A groove on the inner corner of the stock, aids in the clearance of burr or dirt.
- Hardness 60 ± 2 Rc.
- Packed in individual wooden box

Art No.	Beam Size (mm)	Cross Section (mm) ²	Price (Rs.)
238.01	100 x 70	20 x 5	4300 Each
238.02	150 x 100	26 x 6	5200 Each
238.03	200 x 130	32 x 7	8900 Each
238.04	300 x 200	40 x 8	13800 Each

73 MAGNETIC TRY SQUARE



- Used to check Squareness & straightness.
- Made from high quality tool steel
- Beam & blade are perfectly at right angle within 5 microns.
- Powerful magnet with ON-OFF facility.
- Packed in individual box.

Art No.	Size (mm)	Price (Rs.)
239.01	200 L x 50 W x 60 H	13000 Each

74 PERMANENT MAGNETIC SWEEPER



- Used for collecting ferrous particles & scrap from floor space.
- Good quality strong magnets are used.
- Wheels for easy movement on floor.
- Particles are released just by creating gap between bottom plate & magnetic assembly.
- Long handle for easy working.

Art No.	Size (mm)	Price (Rs.)
2126.01	300 x 150	13500 Each
2126.02	450 x 150	16500 Each
2126.03	600 x 150	19500 Each

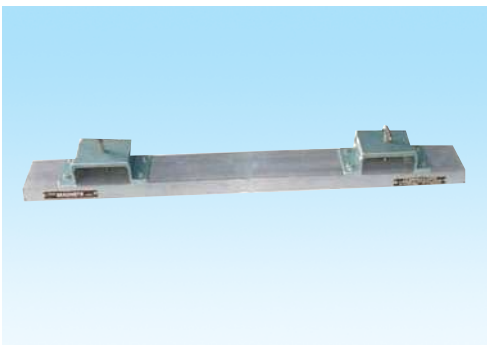
75 HEAVY DUTY PERMANENT MAGNETIC SWEEPER



- Used for collecting ferrous particles & scrap from floor space.
- Good quality strong magnets are used.
- Wheels for easy movement on floor.
- Can lift the job from 150mm
- Useful for the shop floor & scrap yard.
- Hydraulic jack for easy releasing.

Art No.	Size (mm)	Price (Rs.)
2127.01	450 x 300	On Request
2127.02	600 x 300	On Request
2127.03	900 x 300	On Request

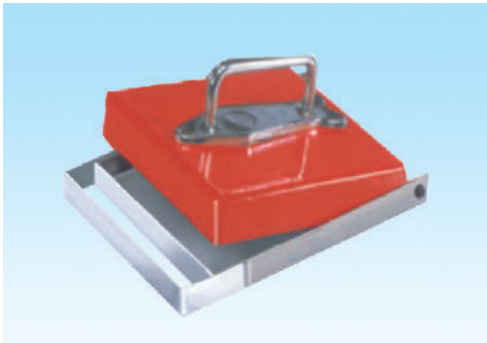
76 FORKLIFT OPERATED PERMANENT MAGNETIC SWEEPER



- Used for collecting ferrous particles & scrap from floor space.
- Good quality strong magnets are used.
- Particles are detached by separating lower plate from upper body.
- Magnetic Sweeper can fit to any fork lift
- Useful for scrap yard.

Art No.	Size (mm)	Price (Rs.)
2150.01	800 x 250	On Request
2150.02	1000 x 250	On Request
2150.03	1200 x 250	On Request
2150.04	1500 x 250	On Request
2150.05	1800 x 250	On Request
2150.06	2000 x 250	On Request

77 PLATE TYPE MAGNETIC SEPARATOR



- Used for lifting & handling of ferromagnetic particles.
- Strong magnetic field to lift large quantity of particles.
- Particles are detached by separating lower plate form upper magnetic body.

Art No.	Size (mm)	Price (Rs.)
271.01	175 x 120 x 11	1600 Each
271.02	195 x 135 x 14	1800 Each

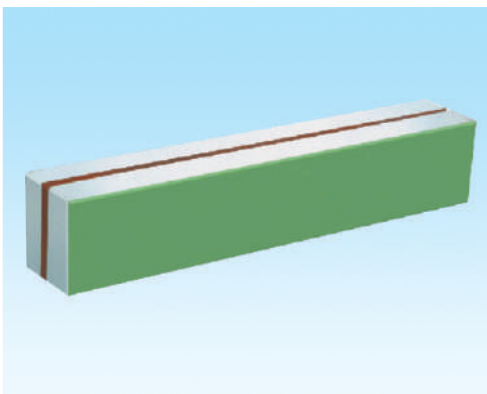
78 MAGNETIC SEPARATOR



- Used for removing or collecting fine ferrous or ferromagnetic contaminants from oil tank or coolant tank.
- Powerful magnet allows large collection of particles.
- Stainless steel body for rust prevention.
- Handle or eye bolt on top for easy handling.
- Available in different diameter & length.

Art No.	Dia (inch.)	Length (inch.)	Price (Rs.)/ inch Length
272.01	1"	4, 5, 6, 7, 8	On Request
272.02	2"	6, 8, 10, 12, 14	On Request
272.03	4"	6, 8, 10, 12, 16	On Request
272.04	6"	8, 16, 24, 30, 36	On Request

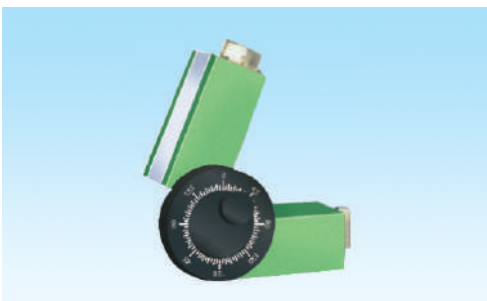
79 MAGNETIC RACKS



- Useful in workshops, Garages, Assembly shops for keeping various hand tools.
- Compact design with strong magnetic field.
- Protected from rust & corrosion.
- Can also be used for small lifting & holding.
- Easy for handling & storage.

Art No.	Size (mm)	Price (Rs.)
278.01	150 L x 25 W x 30 H	1800 Each
278.02	225 L x 25 W x 30 H	2700 Each
278.03	300 L x 25 W x 30 H	3600 Each

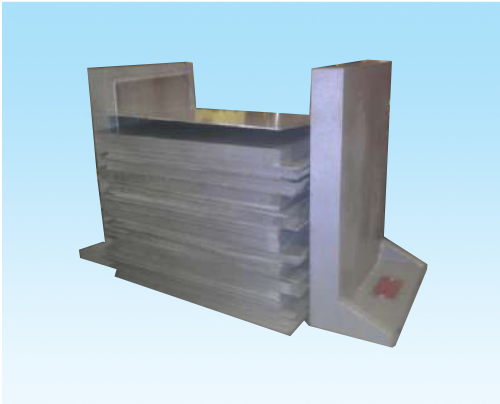
80 MAGNETIC ANGLE SETTER



- Used to clamp or set steel parts or sheets at different positions.
- Magnetic blocks can be positioned by tightening a locking nut.
- Round Dial indicates Angular positioning.
- Hold flat as well as round jobs.
- Strong magnetic power with ON - OFF facility.

Art No.	Size (mm)	Price (Rs.)
275.01	190 L x 50 W x 55 H	13000 Each
275.02	275 L x 50 W x 55 H	15000 Each
275.03	166 L x 50 W x 55 H	12000 Each

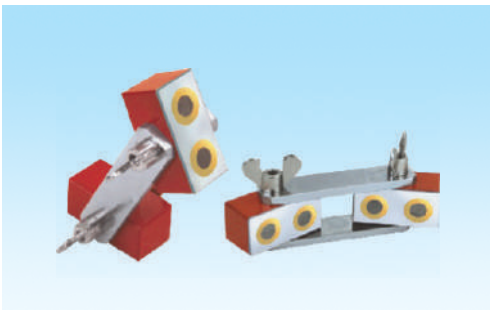
81 MAGNETIC SHEET SEPARATOR (FLOATER)



- Used for creating gap between thin sheets & thus, removing sheets one by one easily from stacks.
- They induce similar pole force to each plate in a stack, there by creating repelling forces in consecutive plates, causing for separation.
- Can separate oil stuck sheets or heavily piled-up sheets with less efforts & less time.
- Any size & shape of sheets can be separated by using number of floaters at certain interval.
- Compact design with strong magnetic field.
- Can be attached to machine or tighten to table.
- For better results - used in pair.

Art No.	Size (mm)	Price (Rs.)
279.01	150 W x 300 H	On Request
279.02	250 W x 300 H	On Request
279.03	300 W x 300 H	On Request
279.04	150 W x 400 H	On Request
279.05	250 W x 400 H	On Request
279.06	300 W x 400 H	On Request

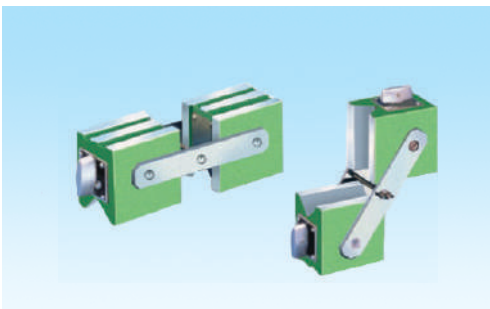
82 MAGNETIC ADJUSTABLE LINK



- A twin magnetic unit possessing a multi angle setting for Welding.
- It can be quickly locked at any angle by turning of wing nut, thus providing the simplest & most rapid means of clamping together.
- When Connected in series, complex arrangement is possible for holding sheets & strips.

Art No.	Size (mm)	Length (mm)	Magnetic Pull on each block	Price (Rs.)
273.01	50 x 25 x 25	125	15 kg	4500 Set

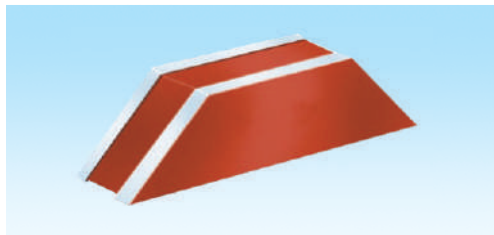
83 MAGNETIC POSITIONER



- Used to clamp or set steel parts or sheets at different positions.
- Two magnetic housing connected laterally by a pair of side strips.
- Magnetic housings can be positioned by tightening a wing nut.
- Hold flat as well as round jobs.
- Strong magnetic power with ON - OFF facility.

Art No.	Size (mm)	Overall Length	Magnetic Pull	Price (Rs.)
274.01	75 x 75 x 56	220 mm	75 kg	7500 Set

84 MAGNETIC RIGHT ANGLE SETTER DEVICE

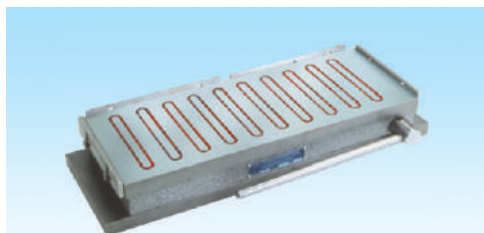


- Quick means for setting or clamping of sheet metals at right angle.
- Precision ground for parallelism & angle.
- Compact design, allows it to use at confined space.
- Powerful permanent magnet.
- Available in soft & hard working surface.
- Supplied in perfect matched pair.
- Number of sheets can be hold in most complicated arrangement by using it in multiple.

Sr. No.	Art No.	Size (mm)	Price (Rs.)
1.	276.01 Soft	50L x 30W x 30H	On Request
2.	276.01 Hard	50L x 30W x 30H	On Request
3.	276.02 Soft	100L x 40W x 40H	On Request
4.	276.02 Hard	100L x 40W x 40H	On Request

Sr. No.	Art No.	Size (mm)	Price (Rs.)
5.	276.03 Soft	150L x 50W x 50H	On Request
6.	276.03 Hard	150L x 50W x 50H	On Request
7.	276.04 Soft	200L x 50W x 50H	On Request
8.	276.04 Hard	200L x 50W x 50H	On Request

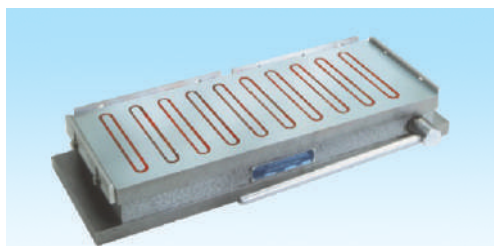
85 PERMANENT MAGNETIC CHUCK (HEAVY DUTY) (STANDARD POLE)



- Holding device for surface grinding machine, Tool & cutter grinder, Spark erosion machines & also for light milling.
- The working face & bottom face are perfectly parallel.
- Assembled with powerful Magnets.
- Poles individually magnetized for full loading power.
- Bottom plate has suitable extension to clamp on table.
- Better magnetic grip due to close poles.
- Suitable to hold thin & small jobs. ■ Easy operated ON-OFF lever.

Sr. No.	Art No.	Size (mm)	Pole Gap (mm)	Pole Pitch (mm)	Price (Rs.)
1.	2100.01	150 L x 100 W x 60 H	19	35	8000 Each
2.	2100.02	175 L x 125 W x 60 H	19	35	8500 Each
3.	2100.03	200 L x 100 W x 60 H	19	35	9000 Each
4.	2100.04	200 L x 150 W x 60 H	19	35	9500 Each
5.	2100.05	250 L x 150 W x 60 H	19	35	10000 Each
6.	2100.06	300 L x 150 W x 60 H	19	35	12000 Each
7.	2100.07	300 L x 200 W x 65 H	19	35	16000 Each
8.	2100.08	350 L x 150 W x 65 H	19	35	14000 Each
9.	2100.09	400 L x 150 W x 65 H	19	35	17700 Each
10.	2100.10	450 L x 150 W x 65 H	19	35	18500 Each
11.	2100.11	450 L x 200 W x 70 H	19	35	24400 Each
12.	2100.12	500 L x 200 W x 70 H	19	35	27100 Each
13.	2100.13	600 L x 200 W x 70 H	19	35	32500 Each
14.	2100.14	450 L x 250 W x 70 H	19	35	32000 Each
15.	2100.15	450 L x 300 W x 70 H	19	35	37000 Each
16.	2100.16	600 L x 250 W x 70 H	19	35	41800 Each
17.	2100.17	600 L x 300 W x 70 H	19	35	56100 Each
18.	2100.18	750 L x 250 W x 70 H	19	35	57500 Each
19.	2100.19	350 L x 200 W x 65 H	19	35	17000 Each
20.	2100.20	400 L x 200 W x 65 H	19	35	21700 Each
21.	2100.21	500 L x 250 W x 70 H	19	35	34000 Each
22.	2100.22	750 L x 300 W x 70 H	19	35	69000 Each
23.	2100.23	900 L x 300 W x 80 H (Two Handles)	19	35	On Request
24.	2100.24	1000 L x 250 W x 80 H (Two Handles)	19	35	On Request
25.	2100.25	1000 L x 300 W x 80 H (Two Handles)	19	35	On Request

86 PERMANENT MAGNETIC CHUCK (HEAVY DUTY) (CLOSE POLE)



- Holding device for surface grinding machine, Tool & cutter grinder, Spark erosion machines & also for light milling.
- The working face & bottom face are perfectly parallel.
- Assembled with powerful Magnets.
- Poles individually magnetized for full loading power.
- Bottom plate has suitable extension to clamp on table.
- Better magnetic grip due to close poles.
- Suitable to hold thin & small jobs. ■ Easy operated ON-OFF lever.

Sr. No.	Art No.	Size (mm)	Pole Gap (mm)	Pole Pitch (mm)	Price (Rs.)
1.	2101.01	250 L x 150 W x 65H	14	30	13900 Each
2.	2101.02	300 L x 150 W x 65H	14	30	15000 Each
3.	2101.03	300 L x 200 W x 65H	14	30	19800 Each
4.	2101.04	350 L x 150 W x 65H	14	30	18500 Each
5.	2101.05	400 L x 150 W x 65H	14	30	21300 Each
6.	2101.06	450 L x 150 W x 70H	14	30	23250 Each
7.	2101.07	450 L x 200 W x 70H	14	30	30000 Each
8.	2101.08	500 L x 200 W x 70H	14	30	33000 Each
9.	2101.09	600 L x 200 W x 70H	14	30	39700 Each
10.	2101.10	450 L x 250 W x 70H	14	30	43000 Each
11.	2101.11	450 L x 300 W x 70H	14	30	48900 Each
12.	2101.12	600 L x 250 W x 70H	14	30	53850 Each
13.	2101.13	600 L x 300 W x 70H	14	30	72700 Each
14.	2101.14	750 L x 250 W x 70H	14	30	73500 Each
15.	2100.15	350 L x 200 W x 65 H	14	30	24700 Each
16.	2100.16	400 L x 200 W x 65 H	14	30	28400 Each
17.	2100.17	500 L x 250 W x 70 H	14	30	41250 Each
18.	2100.18	750 L x 300 W x 70 H	14	30	88200 Each
19.	2100.19	900 L x 300 W x 80 H (Two Handles)	14	30	On Request
20.	2100.20	1000 L x 250 W x 80 H (Two Handles)	14	30	On Request
21.	2100.21	1000 L x 300 W x 80 H (Two Handles)	14	30	On Request

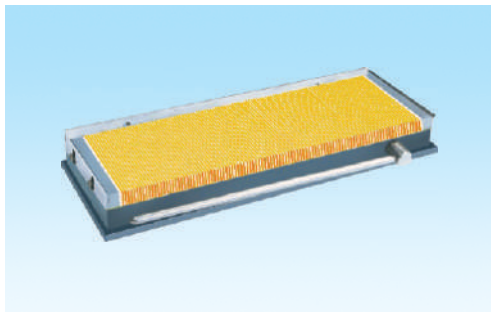
87 PERMANENT MAGNETIC CHUCK (HEAVY DUTY) (FINE PITCH)



- Ideal for Tool Room applications
- Provides powerful holding for thin and thick work pieces.
- Suitable for grinding and light to medium milling operations.
- Adjustable for wide range of work pieces.
- Steel and brass laminated top plate.
- Poles individually magnetized.
- Double magnet system for maximum power.
- Use of powerful magnets ensures that the magnetic force will always remain.
- Low magnetic field no magnetization of tools.
- Smooth and Simple actuating mechanism.
- Rugged construction - exceptional longevity.

Sr. No.	Art No.	Size (mm)	Pole Pitch (mm)	Price (Rs.)
1.	2144.01	150 L x 100 W x 70H	9.9	9600 Each
2.	2144.02	200 L x 100 W x 70H	9.9	12500 Each
3.	2144.03	200 L x 150 W x 70H	9.9	15000 Each
4.	2144.04	250 L x 150 W x 70H	9.9	19000 Each
5.	2144.05	300 L x 150 W x 70H	9.9	20000 Each
6.	2144.06	300 L x 200 W x 70H	9.9	24600 Each
7.	2144.07	350 L x 150 W x 70H	9.9	24000 Each
8.	2144.08	400 L x 150 W x 70H	9.9	26500 Each
9.	2144.09	450 L x 150 W x 70H	9.9	30000 Each
10.	2144.10	450 L x 200 W x 70H	9.9	38000 Each
11.	2144.11	500 L x 200 W x 70H	9.9	45000 Each
12.	2144.12	600 L x 200 W x 70H	9.9	52300 Each
13.	2144.13	800 L x 200 W x 70 H (Two Handles)	9.9	On Request
14.	2144.15	1000 L x 200 W x 70 H (Two Handles)	9.9	On Request

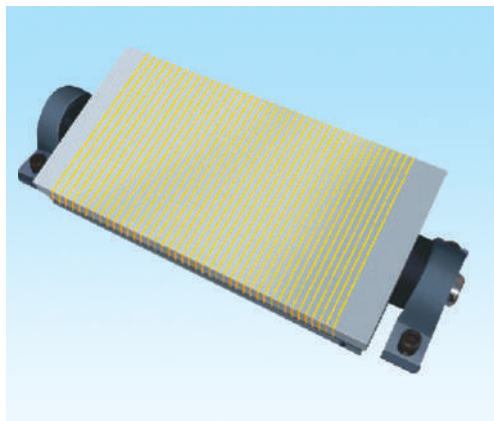
88 MICRO FINE PITCH PERMANENT MAGNETIC CHUCK



- Holding device for surface grinding machine, Tool & cutter grinder, Spark erosion machines.
- Fine Pitch (1 + 0.5) makes it suitable to hold very thin & small jobs.
- The working face & bottom face is perfectly parallel.
- Poles individually magnetized for full loading power.
- Suitable to hold thin & small jobs.
- Bottom plate has suitable extension to clamp on table.
- Better magnetic grip due to close pole.
- Easy operated ON-OFF lever

Sr. No.	Art No.	Size (mm)	Pole Pitch (mm)	Price (Rs.)
1.	2128.01	200 L x 150 W x 60 H	1.5	17580 Each
2.	2128.02	250 L x 150 W x 60 H	1.5	19920 Each
3.	2128.03	300 L x 150 W x 60 H	1.5	22160 Each
4.	2128.04	350 L x 150 W x 60 H	1.5	27650 Each
5.	2128.05	400 L x 150 W x 60 H	1.5	30925 Each
6.	2128.06	450 L x 150 W x 60 H	1.5	34790 Each
7.	2128.07	450 L x 200 W x 60 H	1.5	46400 Each
8.	2128.08	450 L x 250 W x 60 H	1.5	51500 Each
9.	2128.09	500 L x 250 W x 60 H	1.5	57250 Each
10.	2128.10	600 L x 250 W x 60 H	1.5	68700 Each
11.	2128.11	450 L x 300 W x 60 H	1.5	61800 Each
12.	2128.12	500 L x 300 W x 60 H	1.5	68700 Each
13.	2128.13	600 L x 300 W x 60 H	1.5	82500 Each

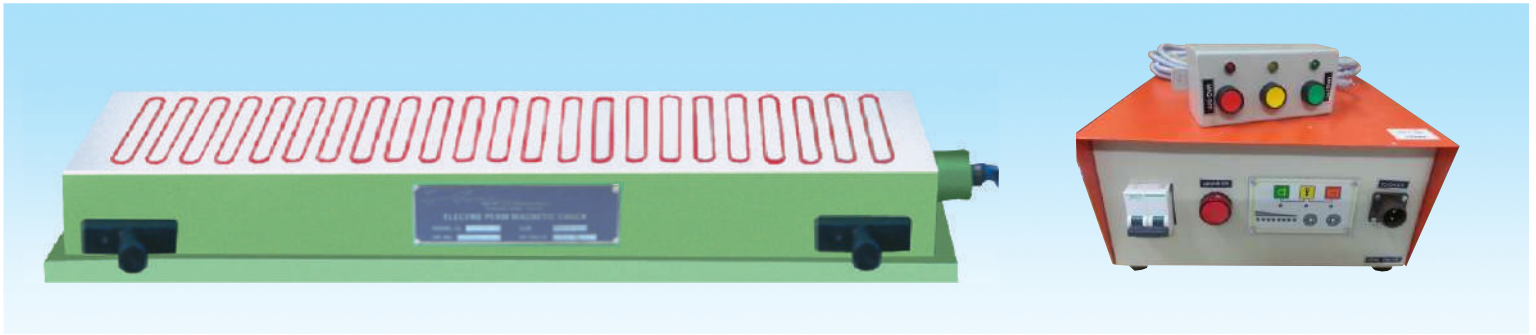
89 PERMANENT MAGNETIC CHUCK ROTARY TYPE



- Suitable for angle grinding on grinding machine
- Suitable for Heavy & Light Grinding
- Champing lugs are Provided.
- Better Magnetic grip due to close pole.
- Chuck is easily attached & ensures high precision works.

Art No.	Size (mm)	Overall Length	Price (Rs.)
2132.01	150 x 250	365	on request
2132.02	150 x 300	450	on request
2132.03	150 x 350	465	on request
2132.04	150 x 450	565	on request

90 HEAVY DUTY MULTICOIL ELECTROMAGNETIC RECTANGULAR CHUCK (STANDARD POLE)



- Work holding device for surface grinding machines.
- Each pole is having separate coil, as such very strong & even magnetic flux is generated.
- Mag - D - Mag with variable control unit allows to neutralize the residual magnetism precisely, using a microprocessor based control circuitry.
- Variable supply to vary power which helps in alignment & removing of warpings of thin jobs.
- Chuck is tested for Slipping force, Waterproof test, temperature rise test, Electrical & Demagnetizing tests.
- Also available in Longitudinal Poles.
- We also manufacture Special chucks to suit individual requirements.
- Good quality & standard electrical accessories.

Sr. No.	Art No.	Size (mm)	Pole Gap (mm)	Pole Pitch	Price (Rs.)
1.	2106.01	450 L x 150 W x 100H	15	40	23650 Each
2.	2106.02	500 L x 200 W x 100 H	15	40	28100 Each
3.	2106.03	600 L x 200 W x 100 H	15	40	32400 Each
4.	2106.04	600 L x 250 W x 100 H	15	40	40500 Each
5.	2106.05	750 L x 250 W x 100 H	15	40	58450 Each
6.	2106.06	900 L x 250 W x 100 H	15	40	63620 Each
7.	2106.07	600 L x 300 W x 100 H	15	40	46800 Each
8.	2106.08	750 L x 300 W x 100 H	15	40	63890 Each
9.	2106.09	900 L x 300 W x 100 H	15	40	71000 Each
10.	2106.10	1000 L x 250 W x 110 H	15	40	71500 Each
11.	2106.11	1000 L x 300 W x 110 H	15	40	85700 Each
12.	2106.12	1500 L x 250 W x 110 H	15	40	97500 Each
13.	2106.13	1500 L x 300 W x 110 H	15	40	121500 Each
14.	2106.14	1500 L x 400 W x 110 H	15	40	162000 Each
15A	2106.15	MAG D-MAG WITH VARIABLE CONTROL UNIT		Upto 1000L 2 Amp. Upto 1500L 3 Amp.	On Request On Request
15B	2106.16	MAG D-MAG WITH VARIABLE CONTROL UNIT & BATTERY BACK-UP (20 minutes)		Upto 1000L 2 Amp. Upto 1500L 3 Amp.	On Request On Request

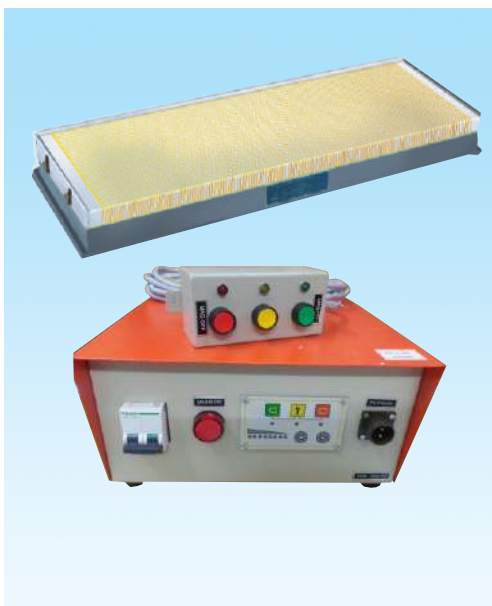
91 HEAVY DUTY MULTICOIL ELECTROMAGNETIC RECTANGULAR CHUCK (FINE PITCH)



- Work holding device for surface grinding machines.
- Each pole is having separate coil, as such very strong & even magnetic flux is generated.
- Fine Pitch (4 + 1) makes it suitable to hold thin & small jobs.
- Mag - D - Mag with variable control unit allows to neutralize the residual magnetism precisely , using a microprocessor based control circuitry.
- Variable supply to vary power which helps in alignment & removing of warpages of thin jobs.
- Chuck is tested for Slipping force, Waterproof test, Temperature rise test, electrical & demagnetizing tests.
- Also available in Longitudinal Poles.

Sr. No.	Art No.	Size (mm)	Pole Gap (mm)	Price (Rs.)
1.	2108.01	450 L x 150 W x 100H	4+1	33800 Each
2.	2108.02	500 L x 200 W x 100 H	4+1	40150 Each
3.	2108.03	600 L x 200 W x 100 H	4+1	46800 Each
4.	2108.04	600 L x 250 W x 100 H	4+1	57000 Each
5.	2108.05	750 L x 250 W x 100 H	4+1	83500 Each
6.	2108.06	900 L x 250 W x 100 H	4+1	90700 Each
7.	2108.07	600 L x 300 W x 100 H	4+1	82150 Each
8.	2108.08	750 L x 300 W x 100 H	4+1	91250 Each
9.	2108.09	900 L x 300 W x 100 H	4+1	105000 Each
10.	2108.10	1000 L x 250 W x 110 H	4+1	98100 Each
11.	2108.11	1000 L x 300 W x 110 H	4+1	116700 Each
12.	2108.12	1500 L x 250 W x 110 H	4+1	145325 Each
13.	2108.13	1500 L x 300 W x 110 H	4+1	176250 Each
		1500 L x 400 W x 110 H	4+1	195750 Each
14.	2108.14	MAG D-MAG WITH VARIABLE CONTROL UNIT	Upto 1000L 2 Amp.	On Request
15	2108.15	MAG D-MAG WITH VARIABLE CONTROL UNIT	Upto 1500L 3 Amp.	On Request
15A	2108.16	MAG D-MAG WITH VARIABLE CONTROL UNIT & BATTERY BACK-UP (20 minutes)	Upto 1000L 2 Amp. Upto 1500L 3 Amp.	On Request On Request

92 MULTICOIL ELECTROMAGNETIC RECTANGULAR CHUCK (MICRO FINE PITCH)



- Work holding device for surface grinding machines.
- Each pole is having separate coil, as such very strong & even magnetic flux is generated
- Fine Pitch (1 + 0.5) makes it suitable to hold very thin & small jobs.
- Mag - D - Mag with variable control unit allows to neutralize the residual magnetism precisely , using a microprocessor based control circuitry.
- Variable supply to vary power which helps in alignment & removing of warpages of thin jobs.
- Chuck is tested for Slipping force, Waterproof test, Temperature rise test, Electrical & Demagnetizing tests.
- Good quality & standard electrical accessories.
- We also manufacture Special chucks to suit individual requirement.

Sr. No.	Art No.	Size (mm)	Pole Pitch (mm)	Price (Rs.)
1.	2133.01	450L x 150W x 100H	1.5	50600 Each
2.	2133.02	450L x 200W x 100H	1.5	67450 Each
3.	2133.03	500L x 200W x 100H	1.5	74950 Each
4.	2133.04	600L x 200W x 100H	1.5	90000 Each
5.	2133.05	750L x 250W x 100H	1.5	140000 Each
15 A	2133.06	MAG D-MAG WITH VARIABLE CONTROL UNIT	2Amp.	On Request
15 B		MAG D MAG WITH VARIABLE CONTROL 2 AMP UNI & BATTERY BACK-UP (20 minutes)	2Amp.	On Request

93 FINE PITCH ELECTROPERM MAGNETIC CHUCK (FOR GRINDING MACHINE)



- Work holding device for surface grinding machines.
- COLD DEVICE as it doesn't require power continuously except for short period of activation & deactivation.
- Parallelism & flatness is 0.010mm/300mm.
- Suitable for thin & small jobs.
- Economical for operation & maintenance.
- Uniform clamping force all over surface.
- Negligible power consumption.
- No accidents due to power failure.
- Slipping force is 2.5 Kg/cm².
- Vertical Lifting Force is 35 - 40 Kg/cm².
- Variable supply unit to vary power which helps in alignment & removing of warpages of thin jobs.
- Chuck is tested for Slipping force, Waterproof test, Temperature rise test, Electrical & Demagnetizing tests.
- Good quality & standard electrical accessories.
- We also manufacture Special chucks to suit individual requirement.

Sr. No.	Art No.	Size (mm)	Pole Pitch (mm)	Price (Rs.)
1.	2113.01	450 L x 150 W x 100 H	4 + 1	On Request
2.	2113.02	500 L x 200 W x 100 H	4 + 1	On Request
3.	2113.03	600 L x 200 W x 100 H	4 + 1	On Request
4.	2113.04	600 L x 250 W x 100 H	4 + 1	On Request
5.	2113.05	750 L x 250 W x 100 H	4 + 1	On Request
6.	2113.06	900 L x 250 W x 100 H	4 + 1	On Request
7.	2113.07	600 L x 300 W x 100 H	4 + 1	On Request
8.	2113.08	750 L x 300 W x 100 H	4 + 1	On Request
9.	2113.09	900 L x 300 W x 100 H	4 + 1	On Request
10.	2113.10	1000 L x 250 W x 110 H	4 + 1	On Request
11.	2113.11	1000 L x 300 W x 110 H	4 + 1	On Request
12.	2113.12	1500 L x 250 W x 110 H	4 + 1	On Request
13.	2113.13	1500 L x 300 W x 110 H	4 + 1	On Request
14.	2113.14	1500 L x 400 W x 110 H	4 + 1	On Request
15.	2113.15	Control Unit with variable supply		On Request

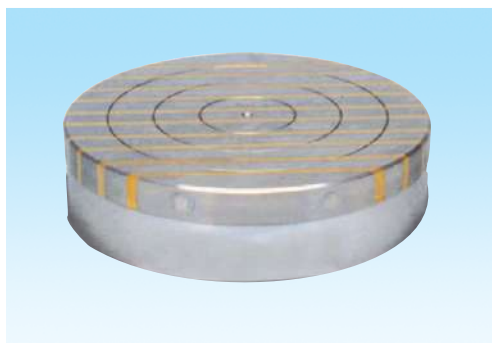
94 ROUND PERMANENT MAGNETIC CHUCK (STANDARD POLE)



- Holding device for Rotary surface grinding and also for Lathe & cylindrical grinding machines.
- Assembled with powerful Magnets.
- ON-OFF by Allen key.

Sr. No.	Art No.	Size (mm)	Pole Gap (mm)	Price (Rs.)
1.	2102.01	Ø 100 x 60 H	19	9000 Each
2.	2102.02	Ø 150 x 60 H	19	9500 Each
3.	2102.03	Ø 160 x 60 H	19	9500 Each
4.	2102.04	Ø 175 x 60 H	19	9900 Each
5.	2102.05	Ø 200 x 65 H	19	12500 Each
6.	2102.06	Ø 225 x 65 H	19	14200 Each
7.	2102.07	Ø 250 x 70 H	19	17000 Each
8.	2102.08	Ø 315 x 70 H	19	24400 Each
9.	2102.09	Ø 375 x 70 H	19	29000 Each
10.	2102.10	Ø 400 x 70 H	19	35200 Each
11.	2102.11	Ø 450 x 70 H	19	45000 Each
12.	2102.12	Ø 500 x 70 H	19	58000 Each
13.	2102.13	Ø 600 x 70 H	19	77000 Each
14.	2102.14	Ø 800 x 70 H	19	On Request
15.	2102.15	Ø 1000 x 70 H	19	On Request
16.	2102.16	Ø 1200 x 70 H	19	On Request

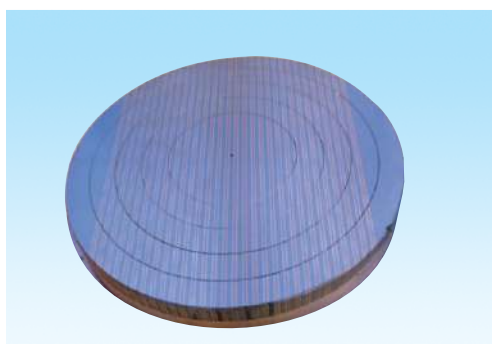
95 ROUND PERMANENT MAGNETIC CHUCKS (UNIVERSAL POLE) (POLE PITCH : 16+3 mm)



- Holding device for Rotary surface grinding, light machining, also for Lathe & cylindrical grinding machines.
- The working face & bottom face is perfectly parallel.
- Assembled in powerful Magnets.
- Suitable for medium and big components for grinding and light turning operations.
- Easily operated with detachable handle.
- Having End to End Magnetic Power.

Sr. No.	Art No.	Size (mm)	Price (Rs.)
1.	2147.01	Ø 75 x 70 H	On Request
2.	2147.02	Ø 100 x 70 H	On Request
3.	2147.03	Ø 150 x 70 H	On Request
4.	2147.04	Ø 175 x 70 H	On Request
5.	2147.05	Ø 200 x 70 H	On Request
6.	2147.06	Ø 250 x 70 H	On Request
7.	2147.07	Ø 300 x 70 H	On Request
8.	2147.08	Ø 400 x 70 H	On Request
9.	2147.09	Ø 450 x 70 H	On Request
10.	2147.10	Ø 500 x 70 H	On Request
11.	2147.11	Ø 600 x 70 H	On Request

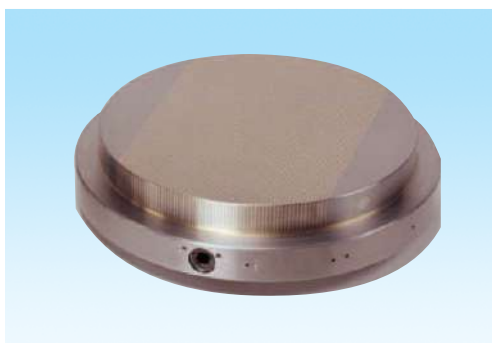
96 ROUND PERMANENT MAGNETIC CHUCKS (FINE POLE) (POLE PITCH : 10 mm)



- Holding device for Rotary surface grinding, light machining for Lathe
- Powerful and suitable for grinding and turning operation
- Suitable for Thin & Thick work pieces
- Top plate is made of Steel and Brass.
- Double Magnetic system for maximum power
- Having End to End Magnetic Power.

Sr. No.	Art No.	Size (mm)	Price (Rs.)
1.	2148.01	200 Dia x 80 H	On Request
2.	2148.02	250 Dia x 80 H	On Request
3.	2148.03	300 Dia x 80 H	On Request
4.	2148.04	350 Dia x 80 H	On Request
5.	2148.05	400 Dia x 80 H	On Request
6.	2148.06	450 Dia x 80 H	On Request

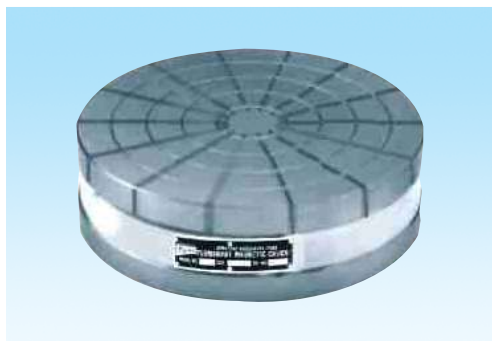
97 ROUND PERMANENT MAGNETIC CHUCKS (MICRO FINE PITCH) (POLE PITCH : 1.5 mm)



- Holding device for Rotary surface grinding machines
- Powerful and suitable for grinding and turning operation
- Suitable for Small to Large & Thin to Thick work pieces like bushes and washers
- Top plate is made of Steel and Brass.
- Having End to End Magnetic Power.
- Made with super powerful rare earth magnets.

Sr. No.	Art No.	Size (mm)	Price (Rs.)
1.	2149.01	150 Dia x 80 H	On Request
2.	2149.02	200 Dia x 80 H	On Request
3.	2149.03	250 Dia x 80 H	On Request
4.	2149.04	300 Dia x 80 H	On Request
5.	2149.05	350 Dia x 80 H	On Request
6.	2149.06	400 Dia x 80 H	On Request
7.	2149.07	450 Dia x 80 H	On Request
8.	2149.08	500 Dia x 80 H	On Request

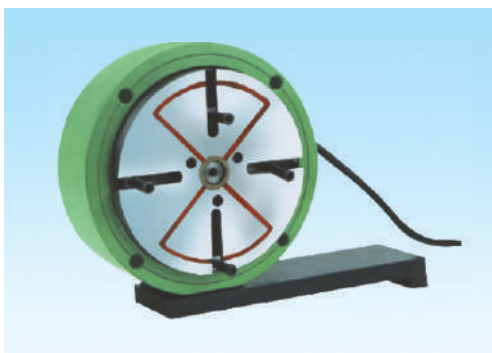
98 ROUND PERMANENT MAGNETIC CHUCKS (RADIAL POLE)



- Suitable for components for all sizes for grinding, light turning & cylindrical grinders
- Powerful and suitable for grinding and turning operation.
- Ideal for discs and ring shaped components.
- Supplied with detachable handle for easy use.

Sr. No.	Art No.	Size (mm)	Price (Rs.)
1.	2130.01	150 Dia x 60 H	On Request
2.	2130.02	200 Dia x 60 H	On Request
3.	2130.03	250 Dia x 60 H	On Request
4.	2130.04	300 Dia x 60 H	On Request
5.	2130.05	350 Dia x 60 H	On Request
6.	2130.06	400 Dia x 60 H	On Request
7.	2130.07	450 Dia x 60 H	On Request
8.	2130.08	500 Dia x 60 H	On Request
9.	2130.09	600 Dia x 60 H	On Request

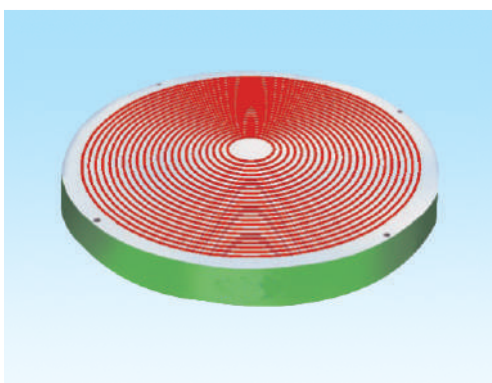
99 ELECTRO MAGNETIC CHUCK FOR CYLINDRICAL GRINDING



- Work holding device on Cylindrical Grinding m/c to grind outer diameter & face component as bearing recess, flanges, collet bushes, discs etc.
- Can also be used on Lathe machine.
- Mag - D - Mag with variable control unit allows to neutralize the residual magnetism precisely.
- Magnetic Coil (outer body) remains stationary & middle part (Round body) will rotate with spindle through adaptor sleeve.
- Variable supply is useful to true the job.
- 4 T-slots for easy location of job.
- Chuck is tested for Slipping force, Temperature rise, Waterproof,
- Electrical & Demagnetizing tests.
- Good quality & standard electrical accessories.
- Battery Back-up unit is also available on request

Sr. No.	Art No.	Size (mm)	Price (Rs.)
1.	2117.01	Ø 100 [4"]	On Request
2.	2117.02	Ø 150 [6"]	On Request
3.	2117.03	Ø 200 [8"]	On Request

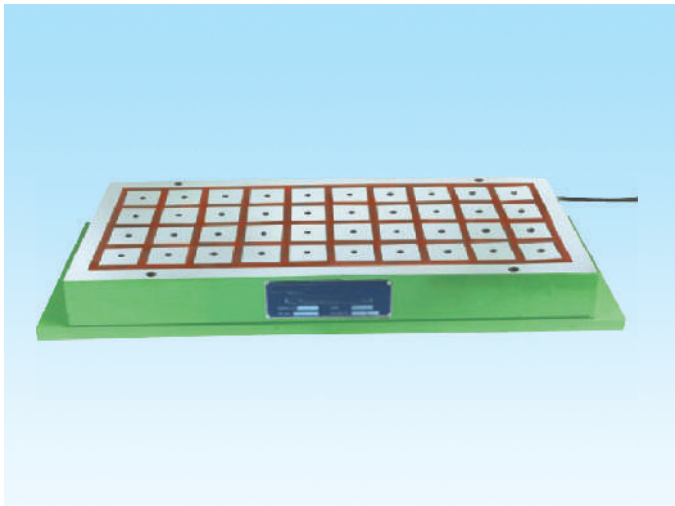
100 ELECTRO MAGNETIC ROUND CHUCK (FOR ROTARY SURFACE GRINDERS)



- Work holding device for Rotary surface grinding machine & lathe machines.
- Each pole is having separate coil, as such very strong & even magnetic flux is generated.
- Mag - D - Mag with variable control unit allows to neutralize the residual magnetism precisely, using a microprocessor based control circuitry.
- Variable supply for varying power which helps in alignment & removing of warpages of thin jobs.
- The chuck is also useful for second operation
- Chuck is tested for Slipping force, Waterproof test,

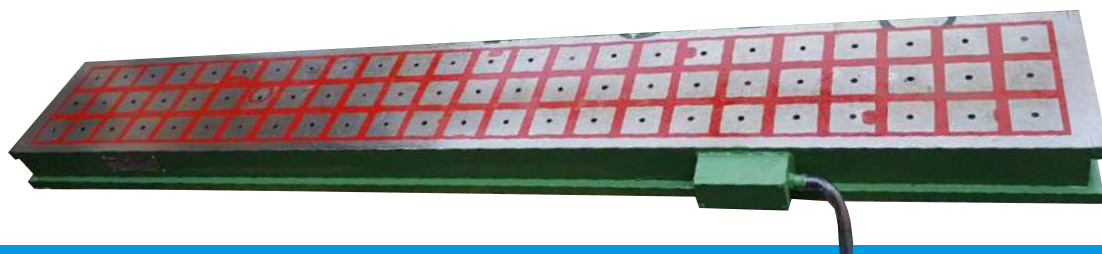
Sr. No.	Art No.	Size (mm)	Circular Pole Gap (mm)	Price (Rs.)
1.	2110.01	Ø 300 x 100 H	10 + 4	On Request
2.	2110.02	Ø 450 x 100 H	10 + 4	On Request
3.	2110.03	Ø 600 x 100 H	10 + 4	On Request
4.	2110.04	Ø 750 x 100 H	10 + 4	On Request
5.	2110.05	Ø 1000 x 100 H	10 + 4	On Request
5A	2110.06	Mag Demag with variable control unit	2Amp	On Request
5B	2110.07	Mag Demag with variable control unit	2Amp. & above	On Request

101 ELECTRO PERMANENT MAGNETIC CHUCK HAVING 50X50 QUARD POLE FOR MILLING

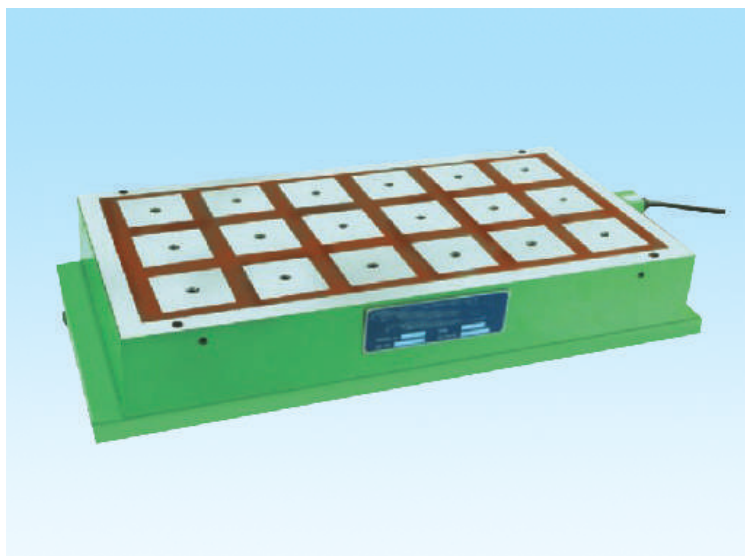


- Work holding device for Milling machines.
- COLD DEVICE as it doesn't require power continuously except for short period of activation & deactivation.
- Suitable for light milling i.e. 1-3 mm depth of cut at recommended speed & feed.
- Maximum material removal is possible.
- Economical for operation & maintenance.
- No accidents due to power failure.
- Slipping force is 2.5 - 3 Kg/cm².
- Vertical Lifting Force is 35 - 40 Kg/cm².
- Variable supply unit to vary power which helps in alignment of jobs.
- Chuck is tested for Slipping force, Waterproof test, Temperature rise test, Electrical & Demagnetizing tests.
- Good quality & standard electrical accessories.
- We also manufacture Special chucks to suit individual requirement.

Sr. No.	Art No.	Size (mm)	Price (Rs.)	Sr. No.	Art No.	Size (mm)	Price (Rs.)
1.	2136.01	300L x 200W x 80H	On Request	24.	2136.24	600L x 400W x 80H	On Request
2.	2136.02	1000L x 200W x 90H	On Request	25.	2136.25	800L x 400W x 90H	On Request
3.	2136.03	250L x 250W x 80H	On Request	26.	2136.26	900L x 400W x 90H	On Request
4.	2136.04	300L x 250W x 80H	On Request	27.	2136.27	1000L x 400W x 90H	On Request
5.	2136.05	350L x 250W x 80H	On Request	28.	2136.28	1200L x 400W x 90H	On Request
6.	2136.06	400L x 250W x 80H	On Request	29.	2136.29	1500L x 400W x 90H	On Request
7.	2136.07	600L x 250W x 80H	On Request	30.	2136.30	400L x 500W x 80H	On Request
8.	2136.08	800L x 250W x 90H	On Request	31.	2136.31	600L x 500W x 80H	On Request
9.	2136.09	900L x 250W x 90H	On Request	32.	2136.32	800L x 500W x 90H	On Request
10.	2136.10	1000L x 250W x 90H	On Request	33.	2136.33	900L x 500W x 90H	On Request
11.	2136.11	1500L x 250W x 90H	On Request	34.	2136.34	1000L x 500W x 90H	On Request
12.	2136.12	300L x 300W x 80H	On Request	35.	2136.35	1500L x 500W x 90H	On Request
13.	2136.13	350L x 300W x 80H	On Request	36.	2136.36	600L x 600W x 80H	On Request
14.	2136.14	400L x 300W x 80H	On Request	37.	2136.37	800L x 600W x 90H	On Request
15.	2136.15	600L x 300W x 80H	On Request	38.	2136.38	900L x 600W x 90H	On Request
16.	2136.16	800L x 300W x 90H	On Request	39.	2136.39	1000L x 600W x 90H	On Request
17.	2136.17	900L x 300W x 90H	On Request	40.	2136.40	1200L x 600W x 90H	On Request
18.	2136.18	1000L x 300W x 90H	On Request	41.	2136.41	1000L x 700W x 90H	On Request
19.	2136.19	1500L x 300W x 90H	On Request	42.	2136.42	1200L x 700W x 90H	On Request
20.	2136.20	600L x 350W x 80H	On Request	43.	2136.43	800L x 800W x 90H	On Request
21.	2136.21	1000L x 350W x 90H	On Request	44.	2136.44	1000L x 800W x 90H	On Request
22.	2136.22	1200L x 350W x 90H	On Request	45.	2136.45	1100L x 800W x 90H	On Request
23.	2136.23	400L x 400W x 80H	On Request	46.	2136.46	1200L x 800W x 90H	On Request

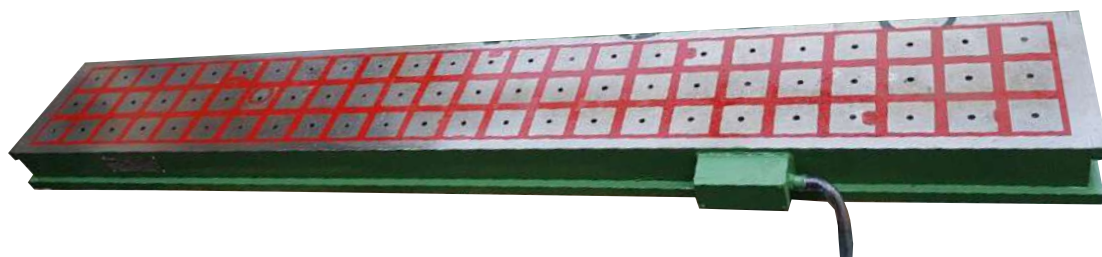


102 ELECTRO PERMANENT MAGNETIC CHUCK HAVING 70x70 QUARD POLE FOR MILLING

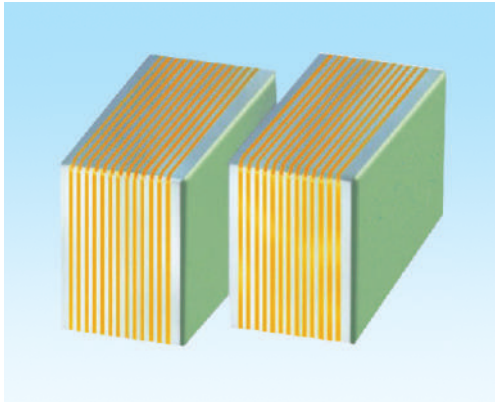


- Work holding device for conventional & CNC milling m/c.
- COLD DEVICE as it doesn't require power continuously except for short period of activation & deactivation.
- Suitable for light milling i.e. 3-6 mm depth of cut at recommended speed & feed.
- Maximum material removal is possible.
- Economical for operation & maintenance.
- No accidents due to power failure.
- Slipping force is 2.5 - 3.5 Kg/cm².
- Vertical Lifting Force is 40 - 45 Kg/cm².
- Variable supply unit to vary power which helps in alignment of jobs.
- Chuck is tested for Slipping force, Waterproof test, Temperature rise test, Electrical & Demagnetizing tests.
- Good quality & standard electrical accessories.
- We also manufacture Special chucks to suit individual requirement

Sr. No.	Art No.	Size (mm)	Price (Rs.)	Sr. No.	Art No.	Size (mm)	Price (Rs.)
1.	2115.01	400L x 250W x 80H	On Request	13.	2115.13	400L x 500W x 80H	On Request
2.	2115.02	600L x 250W x 80H	On Request	14.	2115.14	500L x 500W x 80H	On Request
3.	2115.03	800L x 250W x 90H	On Request	15.	2115.15	600L x 500W x 80H	On Request
4.	2115.04	1000L x 250W x 90H	On Request	16.	2115.16	800L x 500W x 90H	On Request
5.	2115.05	400L x 300W x 80H	On Request	17.	2115.17	1000L x 500W x 90H	On Request
6.	2115.06	600L x 300W x 80H	On Request	18.	2115.18	600L x 600W x 80H	On Request
7.	2115.07	800L x 300W x 90H	On Request	19.	2115.19	700L x 600W x 90H	On Request
8.	2115.08	1000L x 300W x 90H	On Request	20.	2115.20	800L x 600W x 90H	On Request
9.	2115.09	400L x 400W x 80H	On Request	21.	2115.21	1000L x 600W x 90H	On Request
10.	2115.10	600L x 400W x 80H	On Request	22.	2115.22	1200L x 600W x 90H	On Request
11.	2115.11	800L x 400W x 90H	On Request	23.	2115.23	800L x 800W x 90H	On Request
12.	2115.12	1000L x 400W x 90H	On Request	24.	2115.24	1000L x 1000W x 90H	On Request



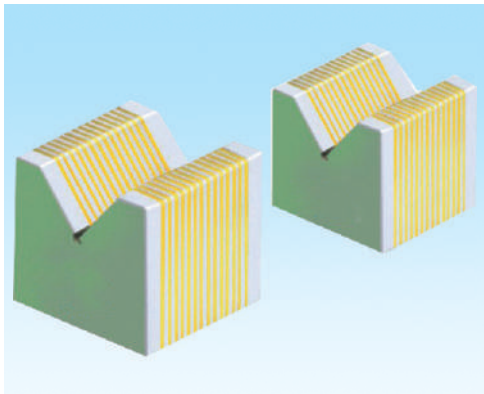
103 TRANSFER BLOCKS



- Used as an accessory for magnetic chuck to clamp thin & odd shaped jobs.
- Simplest method of extending the magnetic flux of magnetic chuck with parallel poles to support the job.
- Maximum flux transformation when placed parallel to pole lines.
- Perfectly ground within 5 Micron & supplied in matched pair.

Sr. No.	Art No.	Size (mm)	Price (Rs.)
1	2103.01	50 L x 35 H x 100 W	7500 Pair
2	2103.02	60 L x 30 H x 75 W	7500 Pair
3	2103.03	50 L x 75 H x 75 W	7500 Pair
4	2103.04	50 L x 50 H x 100 W	7500 Pair
5	2103.05	80 L x 25 H x 120 W	7500 Pair
6	2103.06	60 L x 25 H x 100 W	7500 Pair
7	2103.07	50 L x 20 H x 100 W	7500 Pair

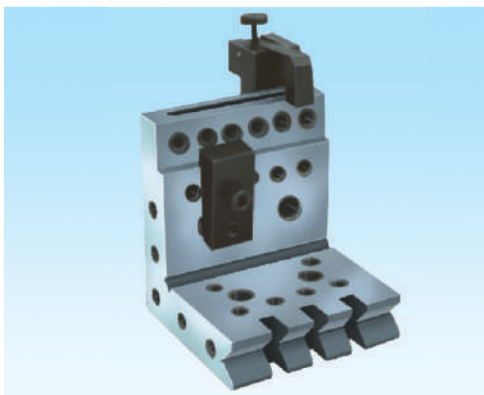
104 V TYPE TRANSFER BLOCKS



- Used as an accessory for magnetic chuck to clamp thin & odd shape jobs.
- Simplest method of extending the magnetic flux of magnetic chuck with parallel poles to support the job.
- Maximum flux transformation when placed parallel to pole lines.
- 90° V provided for round job.
- Perfectly ground within 5 micron & supplied in matched pair.

Sr. No.	Art No.	Size (mm)	Price (Rs.)
1	2104.01	50 L x 60 H x 45 W	9000 Pair
2	2104.02	110 L x 60 H x 45 W	9000 Pair
3	2104.03	75 L x 65 H x 35 W	9000 Pair
4	2104.04	100 L x 65 H x 35 W	9000 Pair
5	2104.05	60 L x 60 H x 45 W	9000 Pair

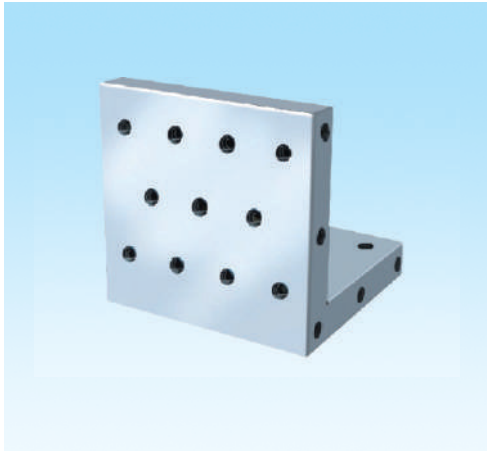
105 HARDENED & GROUND PRECISION ANGLE PLATE



- These angle plates are invaluable for accurate work in Tool room, right angle machining & grinding.
- Made from single piece high quality alloy steel.
- Accuracy for Square ness, Flatness & Parallelism Within 0.005 mm.
- Hardness - 60 ± 2 Rc.
- Unique design to hold small cylindrical parts also.
- M6 & M8 tapped holes for clamping.
- Three clamps provided for different clamping.

Art No.	Size (mm)	Price (Rs.)
261.01	100 x 100 x 115	On Request

106 HARDENED & GROUND PRECISION ANGLE PLATE



- These angle plates are invaluable for accurate work in Tool room, right angle machining & grinding.
- Made from single piece high quality alloy steel.
- Accuracy for Square ness, Flatness & Parallelism is within 0.005mm upto 150L & within 0.010mm upto 300L.
- M6 & M8 tapped holes for clamping.
- Hardness - 60 ± 2 Rc.

Art No.	Size (mm)	Price (Rs.)
262.01	115 x 150 x 150	9950 Each
262.02	150 x 150 x 150	12500 Each
262.03	150 x 150 x 225	16000 Each
262.04	150 x 225 x 300	28750 Each

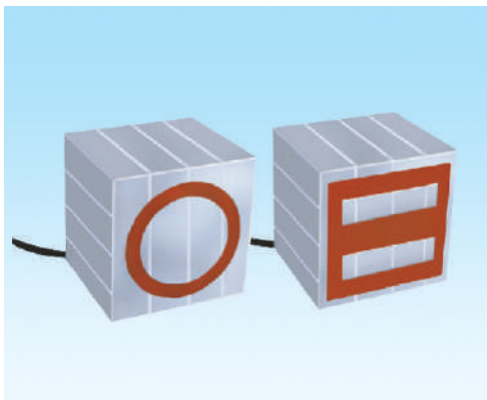
107 ELECTRO MAGNETIC ANGLE PLATE



- Used as a workpiece holding device for Squareness grinding, inspection & light machining.
- Accuracy for Squareness & parallelism is within 0.005mm.
- Operates on 24 VDC, controlled by Mag-D-Mag with variable control unit.
- Easy to operate.
- Saves time as mechanical clamps are avoided.
- DEMAG switch for easy removal of jobs.
- Battery back-up unit is also available on request.

Art No.	Size (mm)	Magnetic Pull	Price (Rs.)
2130.01	150 x 150 x 160	125 Kg	On Request
MAG D-MAG WITH VARIABLE CONTROL UNIT			On Request

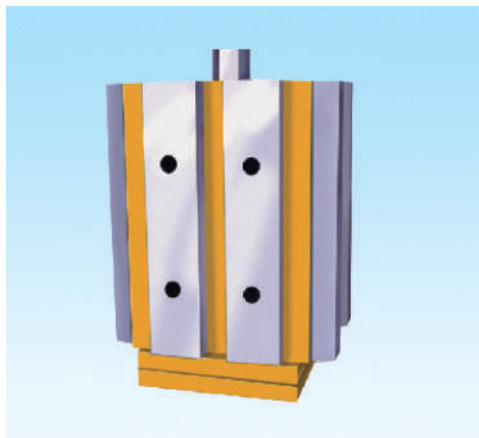
108 ELECTRO MAGNETIC SQUARE BLOCK



- Used as a workpiece holding device for Squareness grinding inspection & light machining.
- Accuracy for Squareness & parallelism is within 0.005mm.
- Front is magnetic face.
- Hardened strips provided on all face except back of magnetic face for wear resistance.
- Operates on 24 VDC, controlled by Mag-D-Mag with variable control unit.
- Easy to operate.
- Saves time as mechanical clamps are avoided.
- DEMAG switch for easy removal of jobs.
- Battery back-up unit is also available on request.

Art No.	Size (mm)	Magnetic Pull	Price (Rs.)
2131.01	110 x 110 x 110	125 Kg	On Request
MAG D-MAG WITH VARIABLE CONTROL UNIT			On Request

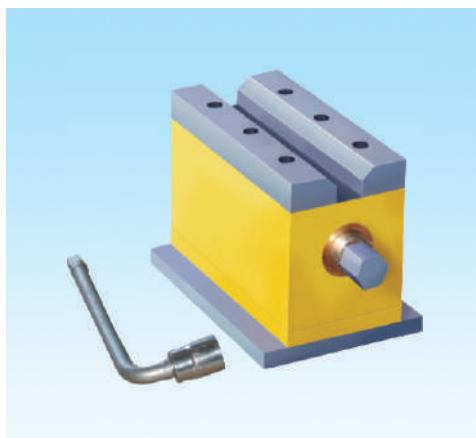
109 MAGNETIC SQUARE BLOCK



- Used as workpiece holding device for squareness grinding, inspection & for light machining.
- Accuracy for squareness & parallelism is within 0.005 mm.
- Hardened strips provided on all faces for wear resistance.
- Easy to operate.
- Time saving as mechanical clamps are avoided.

Art No.	Size (mm)	Magnetic Pull	Price (Rs.)
2130.01	195 L x 125 H x 145 W	200 kg	On request

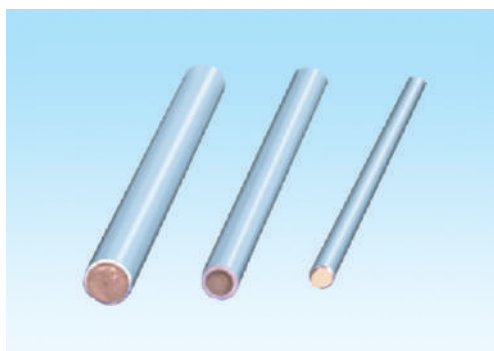
110 MAGNETIC CLAMPING BLOCK



- Suitable for drilling & light Machining.
- Easy to operate.
- Saves time as mechanical clamps are avoided.
- Economical for operation & maintenance.
- Powerful holding with the magnet.
- Vertical lifting force is 35 to 40 kg per cm sq.

Art No.	Size (mm)	Price (Rs.)
2131.01	120 L x 85 W x 130 H	On request

111 MAGNETIC STICKS

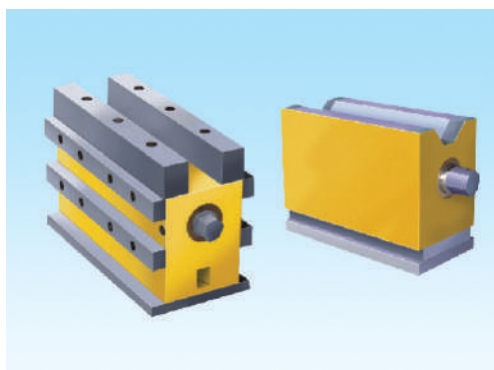


- Used for removing ferrous chips or particles from blind or tapping holes, corners or slots of machine table.
- Compact design, uses strong magnets.
- Magnet depth is 25mm from one end.
- Stainless steel body to avoid corrosion.
- Special sizes can also be manufactured.

Sr. No.	Art No.	Size (mm)	Price (Rs.)
1.	267.01	Ø 3 x 150 L	On request
2.	267.02	Ø 5 x 150 L	On request
3.	267.03	Ø 6 x 150 L	On request
4.	267.04	Ø 8 x 150 L	On request
5.	267.05	Ø 10 x 150 L	On request

Sr. No.	Art No.	Size (mm)	Price (Rs.)
6.	267.06	Ø 12 x 150 L	On request
7.	267.07	Ø 14 x 150 L	On request
8.	267.08	Ø 15 x 150 L	On request
9.	267.09	Ø 16 x 150 L	On request
10.	267.10	Ø 18 x 150 L	On request

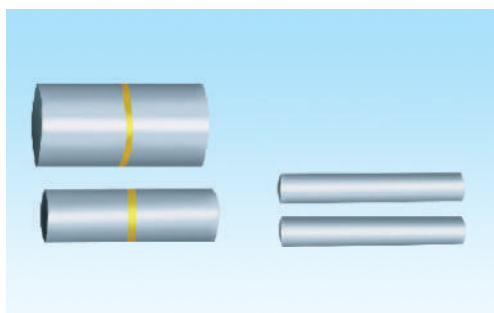
112 HEAVY DUTY MAGNETIC HOLDER



- All surfaces are hardened & ground for Art No. 2134.01
- Suitable for conventional & CNC Milling.
- Suitable for milling 1 to 3mm
- Economical for operation & maintenance.
- No accidents due to power failure.
- Slipping force 2.5 kg / cm²
- Vertical lifting force is 35 - 40 kg / cm²

Art No.	Size (mm)	Price (Rs.)
2134.01	230 L x 115 W x 160 H	On request
2134.02	175 L x 85 W x 130 H	On request

113 MAGNETIC PIN



- Used for checking run-out of gear.
- Manufactured from powerful magnets.
- Available in different lengths & diameter.
- Precisely ground as per customer's requirement.

Art No.	Size (mm)	Price (Rs.)
2135.01	Ø 3 to 20	on request

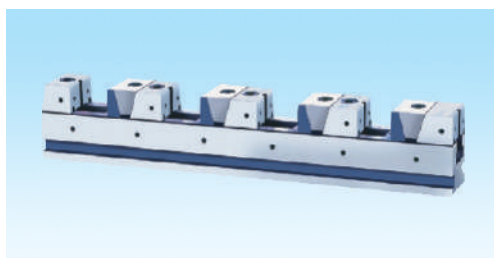
114 STAINLESS STEEL EDM VICE



- **Made from stainless steel.**
- Useful for holding purpose on wire cut machine.
- Suitable for mounting on machine belt.
- Suitable for round job.
- Hardness 55± 2 Rc.

Art No.	Size (mm)	Price (Rs.)
2138.01	270 L x 22 W x 145 H	on request

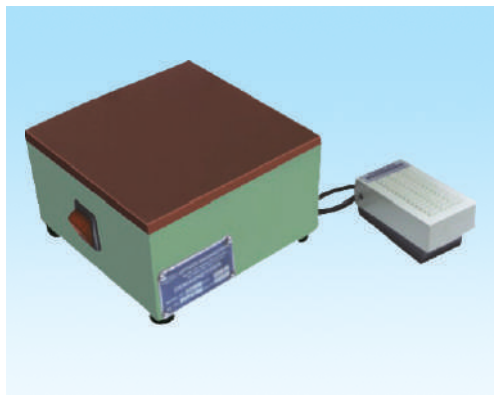
115 UNIT VICE



- Useful for holding purpose on drilling machine & CNC machine.
- Made from alloy steel
- Hardness 60 ± 2 Rc.
- Suitable ferrous & non ferrous material.

Art No.	Size (mm)	Price (Rs.)
2139.01	200 L x 60 W x 90 H	on request
2139.02	400 L x 100 W x 120 H	on request

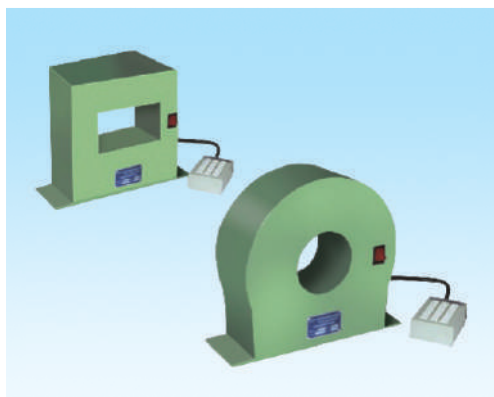
116 DEMAGNETISERS



- Used for removing surface residual magnetism.
- Operate on 220V single phase AC supply.
- Suitable for all types of steel such as HSS, Nickel chrome, spring steel, die steel etc.
- Foot switch for easy & safely operation.
- Fibre top allows scratch free demagnetization.

Sr. No.	Art No.	Size (mm)	Price (Rs.)
1.	240.01	150 x 100	6900 Each
2.	240.02	150 x 150	7900 Each
3.	240.03	150 x 225	8900 Each
4.	240.04	150 x 300	12000 Each
5.	240.05	350 x 350	23900 Each

117 COIL TYPE DEMAGNETISERS



- Used for removing surface residual magnetism of round & cylindrical jobs.
- Operate on 220V single phase AC supply.
- Suitable for all types of steel such as HSS, Nickel chrome, spring steel, die steel etc.
- Foot switch for easy & safely operation.
- Fibre body allows scratch free demagnetization.

Sr. No.	Art No.	Size (mm)	Price (Rs.)
1	241.01	Ø 100 bore	12000 Each
2	241.02	Ø 150 bore	16500 Each
3	241.03	Ø 200 bore	20800 Each
4	241.04	Ø 300 bore	29000 Each
5	241.05	100 L X 100 W X 50 H	15800 Each
6	241.06	200 L X 200 W X 50 H	35700 Each
7	241.07	200 L X 200 W X 50 H	53000 Each

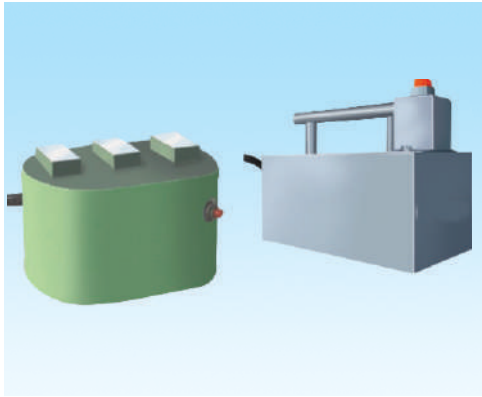
118 TUNNEL TYPE DEMAGNETISER



- Used for removing surface residual magnetism of round & square job.
- Operated on 415 volt 2 phase A/c supply.
- Suitable for continuous duty cycle.
- Current 10 amps.
- Fibre body is used for scratch free demagnetising.
- MCB is provided for safety.
- Special sizes are manufactured as per requirement.

Sr. No.	Art No.	Size (mm)	Price (Rs.)
1.	2140.01	200 L x 200 W x 80 H	on request

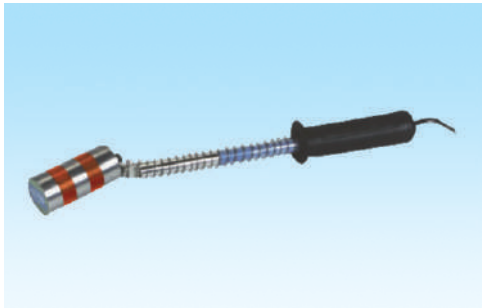
119 MINI DEMAGNETISERS



- Used to remove surface residual magnetism from specific area of Dies & moulds parts, punches etc.
- Operates on 220V single phase AC supply.
- Compact design & easy to operate.
- It demagnetizes just by sliding over the surface by pressing single pole momentary switch .

Sr. No.	Art No.	Size (mm)	Price (Rs.)
1	242.01	90 L x 45 W x 45 H	On Request
2	242.02	80 L x 60 W x 55 H	On Request
3	242.03	150 L x 80 W x 80 H	On Request

120 ROUND TYPE DEMAGNETISERS



- Used to remove surface residual magnetism from holes of Press tools, Dies & moulds parts, punches etc.
- Operates on 220V single phase AC supply.
- Compact design & easy to operate.
- It demagnetizes just by sliding over the surface.

Art No.	Size (mm)	Handle Length (mm)	Price (Rs.)
243.01	Dia 40 x 80L	200	On Request

121 PORTABLE DEMAGNETISERS



- Used for removing surface residual magnetism.
- Operated on 220 V single phase AC supply.
- Suitable for all types of steel such as HSS, Nickel chrome, spring steel, die steel etc.
- Fiber top allows scratch free demagnetiser.
- ON - OFF button portable.
- Suitable handle.

Art No.	Size (mm)	Price (Rs.)
2142.01	150 x 100	12500 Each

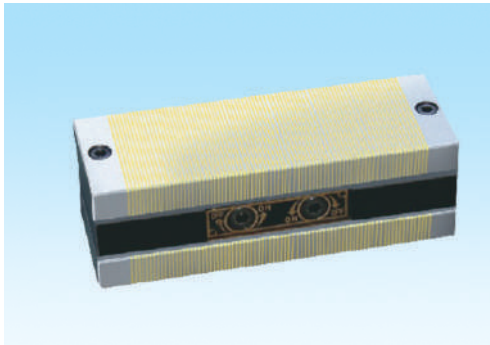
122 ELECTROMAGNETIC SHEET METAL LIFTER



- Used for lifting & handling of steel sheets & blanks from stacks & press machine.
- Operates on 24 VDC.
- Convenient, easy for loading & unloading of sheets.
- Two pot magnets can be positioned at desired distance for handling different sizes of sheets.
- Light weight & easy to use.

Art No.	Pot Magnet (mm)	Handle length(mm)	Handle width(mm)	Range (mm)	Magnetic Force	Price (Rs.)
2141.01	Ø25 x 20H	250	30	25 - 200	3 Kg.	On Request
2141.02	Ø40 x 20H	300	30	40 - 250	5 Kg.	On Request
2141.03	Ø50 x 25H	300	30	40 - 250	8 Kg.	On Request
	Power Supply Unit					On Request

123 MAGNETIC BLOCK



- Both side can hold work pieces & can be turn ON-OFF individually
- They are shear to the work table by turning ON-OFF magnet
- The side face can also hold work piece.
- Light Weight for easy positional adjustment.
- Removable On-OFF Handle.
- Suitable for grinding machine & EDM Machine.

Art No.	Size (mm)	Price (Rs.)
2137.01	150 L x 50 W x 50 H	on request

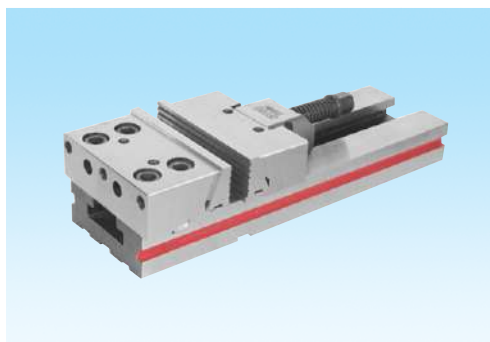
124 HYDRAULIC MACHINE VICE



- Vice body is made of ductile iron.
- Clamping force 3500 KGF
- Accuracy in squareness within 0.02/100 mm
- Hydraulic cylinder of alloy steel hardened, ground and lapped
- Jaws made of alloy steel properly hardened
- Fixed Jaws is provided with vertical and horizontal V grooves to hold the round jobs firmly

Specifications	Art. No.1014.01 Fixed Base	Art. No.1014.02 Fixed Base	Art. No.1014.03 Swivel Base	Art. No.1014.04 Swivel Base
A Width of Jaws	150 mm	150 mm	150 mm	150 mm
B Opening of Jaws	300 mm	200 mm	300 mm	200 mm
C Depth of Jaws	60 mm	60 mm	60 mm	60 mm
D Length overall	585 mm	475 mm	585 mm	475 mm
E Height overall	155 mm	155 mm	195 mm	195 mm
F Width overall	250 mm	250 mm	320 mm	320 mm
G Tenon slot size	20 mm	20 mm	20 mm	20 mm
H Weight Approx.	46 Kg	42 Kg	60 Kg	55 Kg
I Price	Rs.42500	Rs.39500	Rs.47500	Rs.44500

125 MODULAR PRECISION MACHINE VICE



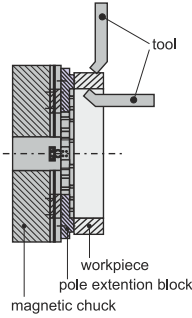
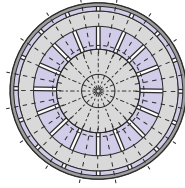
- High Accuracy 0.01/100 mm
- Unlimited Clamping Range
- High Quality Alloy Steel
- Hardened & Ground
- Can be Used Multiple Style
- No Length Height Limitations
- No Jaw Lift
- Low Profile
- All vises are matched

Specifications	Art. No.1024.01	Art. No.1024.02	Art. No.1024.03
Size in Inches	4"	6"	8"
A Width of Jaws	100 mm	150 mm	200 mm
B Opening of Jaws	130 mm	225 mm	300 mm
C Depth of Jaws	30 mm	50 mm	60 mm
D Length overall	325 mm	420 mm	555 mm
E Height overall	71 mm	98 mm	118 mm
F Width overall	102 mm	150 mm	203 mm
G Tenon slot size	16 mm	16 mm	16 mm
H Weight Approx.	9 Kg	28 Kg	48 Kg
I Price	Rs.32750	Rs.51450	Rs.60600

126 ELECTROPERM MAGNETIC ROUND CHUCK FOR TURNING



Continues Power
Not Required.



APPLICATION-

1. Use in vertical and horizontal turning of Plates.
2. Radially movable location blocks will help to position and secure work pieces. For Heavy Turning
3. Double magnet is available for heavy duty operations on seamless rolled rings, turning flanges and machining plates.

ID, OD and face machining in one setup

FEATURE-

1. ID, OD & Face Machining In One Setup which no other work-holder will provide.
2. Detachable Bayonet Plug for power supply.
3. Poles Individually Magnetized for full loading power. Also Simple Pole Extensions allows tool clearance for rings.
4. Assembled with power full magnets. So heavy cuts can be taken.
5. Setup is easy & downtime for different work pieces will be minimal.
6. Clamp force is consistent & predictable. Work holder does not distort the work piece.
7. Unclamping is on the tip of a button, which increases productivity.
8. No Heat is generated by integrating coil when magnet is activated, as power supply is disconnected during machining being Electro Perm Magnetism.
9. Full Machining Capacity can be Exploited with better tolerances & repeatability.

Sr. No.	Art No.	Size (mm)
1.	2145.01	Ø 300 x 100 H
2.	2145.02	Ø 450 x 100 H
3.	2145.03	Ø 500 x 100 H
4.	2145.04	Ø 600 x 100 H
5.	2145.05	Ø 800 x 100 H
6.	2145.06	Ø 1000 x 100 H
7.	2145.07	Ø 1250 x 100 H
8.	2145.08	Ø 1500 x 100 H

VARIABLE CONTROL UNIT

EXTENSION BLOCK

EXTENSION JAWS (Movable)

127 ELECTROPERM MAGNETIC ROUND CHUCK FOR GRINDING



Continues Power
Not Required.



FEATURE-

1. Continuous Electricity is not required. 100% safe in used.
2. Power for all poles transferred to ring / plates to hold the job firmly.
3. Assembled with power full magnets. So heavy cut can taken
4. Poles individually magnetized for full loading power

APPLICATION-

1. Use in vertical and horizontal grinding Machine.
2. Radially movable location blocks will help to position and secure work pieces. This is also necessary for wheel clearance .

Sr. No.	Art No.	Size (mm)
1.	2146.01	Ø 300 x 100 H
2.	2146.02	Ø 450 x 100 H
3.	2146.03	Ø 500 x 100 H
4.	2146.04	Ø 600 x 100 H
5.	2146.05	Ø 800 x 100 H
6.	2146.06	Ø 1000 x 100 H
7.	2146.07	Ø 1250 x 115 H
	2146.08	Ø 1500 x 115 H

VARIABLE CONTROL UNIT FOR ABOVE CHUCKS

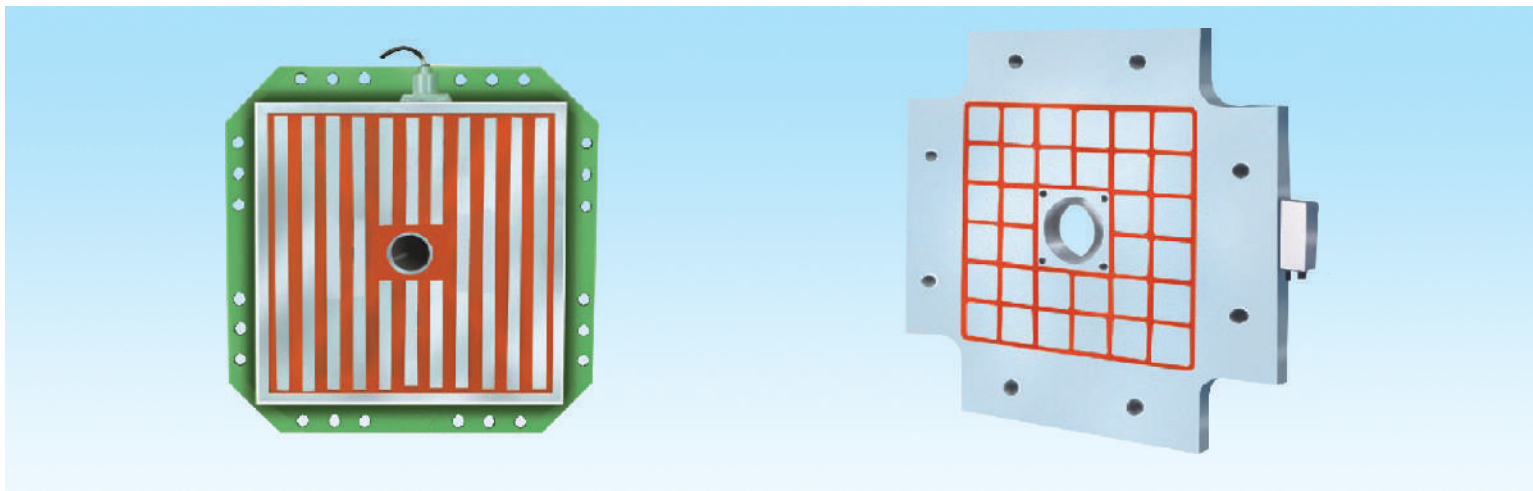
EXTENSION BLOCK

EXTENSION JAWS (Movable)

ON REQUEST

ON REQUEST

128 MAGNETIC PLATEN



Introduction:

Ultra Magnetic Platen used for very fast, safe & easy clamping of moulds on Injection moulding machine. This advanced technology eliminates hydraulic & mechanical clamping system & provides quick mould change (QMC) and just in time (JIT)moulding.

Operating Principal

Magnetic Platen works on the ELECTRO PERMANENT MAGNETIC SYSTEM that develops very high magnetic force. The electrical control equipment is only to activate & de-activate the magnets inside the platen i.e. it will not loose it's magnetic power in case of power failure. It doesn't requires power once it is magnetized.

Operation

To mount a mould, the operator has to match the mould base to the locator ring on stationery platen, then bring the moving platen in until it touches the rear mould plate. Now, the operator has to magnetize the mould, remove the straps holding the mould halves together and then pull the moving platen back. The machine and mould are now ready for production.

A typical magnetic mould change involves bringing both mould halves together, securing the mould halves; demagnetizing the platen & then lifting the mould out of the press by suitable means.

Salient Features

Universal :

- Compatibility with all existing machines
- Full utilization of active area of the platen ● Maintenance Free

Saving:

- Drastic reduction of downtime
- Virtually zero operating cost, no power consumption
- Very fast return of investment

Reliable :

- Total demagnetization of moulds & plates when switched off.
- No deformation ● Fast Clamping

Safe :

- Working on ELECTRO PERMANENT MAGNETIC SYSTEM
- Uniform clamping force across the entire rear of mould
- Uniform magnetic field.

Art No.	Size (mm)	Max. Working Temp (°C)	Clamping Force (Kg/Cm ²)	Thickness	Price (Rs.)
2143.01	Depends on Machine Platen Size	0 - 130	25 - 30	60 -65 mm	on request
2143.02	Depends on Machine Platen Size	130 - 240	25 - 30	60 - 65 mm	on request
2143.03	Control Unit for Above Magnetic Platen Power Supply Unit				on request

129 ELECTRO MAGNETIC CIRCULAR LIFTER



Features

- Easy & speedy handling of solids and scraps.
- Compact and Light weight models are available with optimum load carrying capacity.
- Optimum cross section combined with high magnetic flux produced ensures maximum lifting capacity with respect to the magnet self weight.
- Special Heavy Steel Mill Duty Series with Heavy Duty Manganese Casting Bumper Plate also available with deep field design, Higher Duty Cycle for enhanced Magnetic Operation and Higher Lifting Capacity.
- Manufactured with Cast Steel body and/or Fabricated structure.
- Duty Cycle 50%/ 60%/ 75% per 10 minute.
- Aluminium/Copper/Anodised Aluminium Conductor wound coil, special "H" or "C" Class insulation.
- Completely sealed with thermal conductive compound and protected terminal box.
- Supplied along with standard three-fall chain suspension with bull ring.
- Non Linear Resistors for surge suppression (optional).
- Operates on 220 Volts DC, other voltage on request.
- Compact Heavy duty control panel with easy maintenance.
- Lead Acid/Ni-cd Battery Back-up with Charger.
- Cable Reeling Drums in various types are available.

Application

- Loading/unloading of steel scraps/pig irons/ cast iron/boring/turning/broken steel.
- Handles slabs, blooms and ingots.
- Handle plates/angle/channels.
- Used in smelt mixing operation.
- Can be used with mobile cranes.
- Direct feeding in the furnace.
- Sweeping/cleaning of mill area.

TECHNICAL SPECIFICATION

Type	Dia of Magnet	Magnet Weight (Kgs.)	Current Amps.		Solid Ingot	LIFTING CAPACITY (Kgs.)			Turnings
			Cold	Hot		Skull Cracker Ball	Heavy Scrap	Boring	
SM 30 C*	760	600	13	9	5,000	2,000	250	100	50
SM 30 A*	760	730	15	10	4,000	1,500	200	80	40
SM 36 C	915	900	16	11	7,000	2,500	300	170	100
SM 36 A	915	1,040	20	13	6,000	2,000	250	150	80
SM 40 C	1015	1,220	22	15	8,000	2,700	350	200	150
SM 40 A	1015	1,310	25	17	7,000	2,200	300	170	125
SM 45 C	1145	1,600	35	23	10,000	3,000	470	300	175
SM 45 A	1145	1,520	40	27	8,000	2,500	440	250	150
SM 48 C	1220	1,750	40	27	12,000	3,500	500	320	200
SM 48 A	1220	1,670	45	30	10,000	3,000	450	270	175
SM 52 C	1320	2,100	50	32	14,000	5,000	970	450	250
SM 52 A	1320	2,000	60	40	12,000	4,000	900	400	225
SM 55 C	1400	2,300	50	32	17,000	5,000	1000	450	250
SM 55 A	1400	2,200	60	40	15,000	4,000	920	400	225
SM 60 C	1525	3,000	55	36	18,000	6,000	1200	500	275
SM 60 A	1525	2,800	65	42	16,000	5,000	1000	450	250
SM 65 C	1650	4,200	75	50	22,000	8,000	1500	800	500
SM 65 A	1650	3,800	80	53	20,000	7,000	1400	750	450
SM 72 C	1830	5,000	90	60	30,000	10,000	1800	1100	800
SM 72 A	1830	4,500	95	63	27,000	9,000	1600	1000	700
SM 80 C	2030	6,500	110	76	40,000	12,000	2200	1400	1000
SM 80 A	2030	6,000	120	80	36,000	10,000	2000	1300	900

C* - Copper Wound A* - Aluminium Wound - Economical

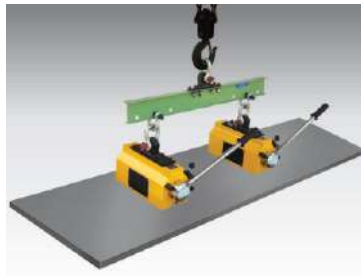
Lifting Capacities are based on tests carried out under optimum conditions. Performances will vary with specific operation depending on type, quality of load as well as stacking factor. As the lifting capacities depend on the quality and bulk volume density of the material lifted, the figures given for scrap handling are based on the following densities of the material :-

1. Heavy Scrap - 3.0 T/m³
2. Borings - 2.2 T/m³
3. Steel Turnings - 1 T/m³

130 PERMANENT MAGNETIC LIFTER



- Used for lifting & handling of steel plates, heavy block & castings as well as heavy round or cylindrical parts.
- The 1 : 3 safety factor of the recommended load to the test load ensures use at optimal working conditions even with substantial air gaps & surface conditions.
- Compact design, strong magnetic pull, total work safety
- Easy operated lever for ON-OFF.
- Spring loaded block at side for safety feature.
- Suitable for Flat & Round jobs.
- No damage on job during operation.



Sr. No.	Art No.	Size (mm) (Height is without hook)	Lifting Capacity	Tested Capacity	Weight	Price (Rs.)
0.	244.01	95 L x 70 W x 80 H	100 Kg	300 Kg	2.5 Kg	9600 Each
1.	244.02	160 L x 100 W x 120 H	200 Kg	600 Kg	9 Kg	15250 Each
2.	244.03	160 L x 100 W x 120 H	250 Kg	750 Kg	9 Kg	17500 Each
3.	244.04	180 L x 100 W x 120 H	300 Kg	900 Kg	14 Kg	19900 Each
4.	245.05	205 L x 125 W x 150 H	500 Kg	1350 Kg	14 Kg	30500 Each
5.	246.06	230 L x 125 W x 150 H	600 Kg	1800 Kg	28 Kg	36500 Each
6.	247.07	280 L x 135 W x 150 H	700 Kg	2100 Kg	30 Kg	41200 Each
7.	248.08	280 L x 180 W x 200 H	1000 Kg	3000 Kg	65 Kg	53500 Each
8.	249.09	300 L x 200 W x 210 H	1500 Kg	4500 Kg	78 Kg	86500 Each
9.	244.10	380 L x 200 W x 210 H	2000 Kg	6000 Kg	90 Kg	90600 Each
10.	244.11	560 L x 250 W x 230 H	3000 Kg	9000 Kg	205 Kg	On Request
11.	244.12	570 L x 300 W x 280 H	5000 Kg	10000 Kg	320 Kg	On Request

ELECTRO PERMANENT MAGNETIC LIFTERS FOR HANDLING OF PLATES & BILLETS



TELSHA





KRISHNA INTERNATIONAL

Works :

Plot No. 374, Sector-7 (II), IMT, Manesar, Gurgaon, Haryana

Head Office :

32, Community Centre, Industrial Area, Wazirpur, Ring Road, Delhi-110052 (INDIA)
Contact Person : Varun Khurana (7982917377, 9910394382) Vishal Khurana (9810300499)
Phones : (91)-11-27376966, 27377066 Fax: (91)-11-27372052
E-mail: vishalkhurana77@hotmail.com, granite@bol.net.in
Website : www.krishnamagnets.com