



2013

KTA SPINDLE TOOLINGS

TOOL HOLDERS FOR CNC LATHE





INDEX

Sr. No.	CONTENTS	PAGE
1	Cylindrical Collet Chuck With M Nuts	1
2	ER Cylindrical Collet Chuck With Standard Nuts	1
3	Quick Change Tapping Chuck: Type KWFLK & KWES	2
3	Revolving Center	3-4
4	Bar Pullers (For CNC Lathes)	5-6
5	Floating Reamer Holder (FRH)	7-8
6	Reduction Bush For Boring Bar Holder	9
7	Work Holding Collet Chuck Assembly	9

The information in this catalog is believed to be correct . KTA Spindle Toolings , however, assumes no responsibility for any errors , inaccuracies or omissions that may appear in this catalog. Information in this catalog is subject to change without notice and should not be taken as a commitment by KTA Spindle Toolings or it's subsidiaries .

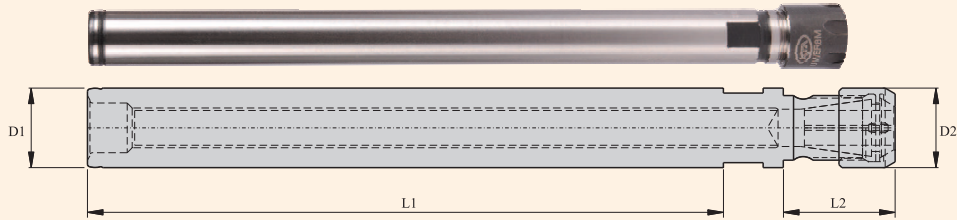
ER COLLET CHUCKS



CYLINDRICAL COLLET CHUCK WITH M NUTS

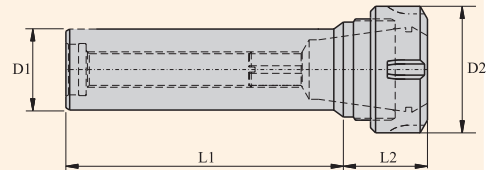
Maximum runout of the internal taper in relation to the external diameter 0.005 mm

CYL BABY COLLET CHUCKS



Item Name	Item Code	D1	L1	L2	D2 for M Type Nut	Clamping Capacity	Suitable Collet	Suitable Spanner	Price INR
D08L070ER08M	KHD080700408	8	70	21	12	0.5-5	ER 8	E8M	2090
D08L125ER08M	KHD081250408	8	125	21	12	0.5-5	ER 8	E8M	2420
D12L125ER08M	KHD121250408	12	125	16	12	0.5-5	ER 8	E8M	2200
D12L125ER11M	KHD121250411	12	125	27	16	0.5-7	ER11	E11M	2420
D12L150ER11M	KHD121500411	16	150	19	16	0.5-7	ER11	E11M	2420
D12L150ER16M	KHD121500416	12	150	36	22	0.5-10	ER16	E16M	2530
D16L150ER11M	KHD121500411	16	150	36	22	0.5-10	ER11	E11M	2420
D20L150ER16M	KHD201500416	20	150	36	22	0.5-10	ER16	E16M	2530
D20L200ER16M	KHD202000416	20	200	36	22	0.5-10	ER16	E16M	3190
D20L150ER20M	KHD201500420	20	150	37	28	1-13	ER20	E20M	2640
D20L150ER25M	KHD201500425	20	150	46	35	1-16	ER25	E25M	2750
D25L150ER16M	KHD201500416	25	150	36	22	0.5-10	ER16	E16M	3080
D25L150ER20M	KHD251500420	25	150	37	28	1-13	ER20	E20M	3080

ER CYLINDRICAL COLLET CHUCK WITH STANDARD NUTS



Maximum runout of the internal taper in relation to the external diameter 0.005

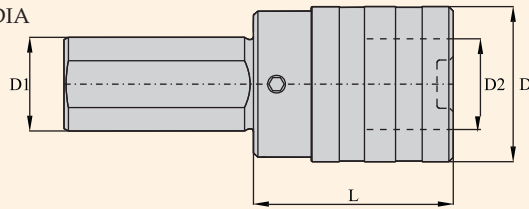
Item Name	Item Code	D1	L1	L2	D2	Clamping Capacity	Suitable Collet	Suitable Spanner	Price INR
D16L060ER16	KHD160600116	16	60	36	28	0.5-10	ER16	Gs25	2090
D16L100ER16	KHD161000116	16	100	36	28	0.5-10	ER16	Gs25	2200
D16L150ER16	KHD161500116	16	150	36	28	0.5-10	ER16	Gs25	2420
D20L100ER16	KHD201000116	20	100	36	28	0.5-10	ER16	Gs25	2200
D20L150ER16	KHD201500116	20	150	36	28	0.5-10	ER16	Gs25	2420
D20L100ER20	KHD201000120	20	100	37	34	1-13	ER20	Gs30	2200
D20L150ER20	KHD201500120	20	150	37	34	1-13	ER20	Gs30	2400
D25L050ER25	KHD250500125	25	50	39	42	1-16	ER25	E25	2200
D32L050ER25	KHD320600125	32	50	39	42	1-16	ER25	E25	2310
D32L060ER32	KHD320600132	32	60	40	50	2-20	ER32	E32	2310
D40L090ER25	KHD400900125	40	90	46	42	1-16	ER25	E25	2640
D40L090ER32	KHD400900125	40	90	52	50	2-20	ER32	E32	2860
D40L090ER40	KHD400900140	40	90	60	63	3-26	ER40	E40	3080



QUICK CHANGE TAPPING CHUCK

TYPE KWFLK SIZE : 1, 2, 3 & 4

Quick Change Tapping Chuck Type KWFLK /DIA

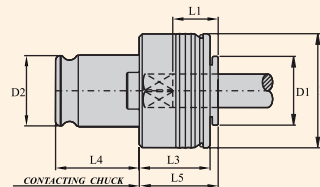


Ordering Example : KWFLK2/DIA 32 = 2Nos.

Chuck Designation Size	Item Code	For Taps Size	Suitable Adaptors	Length Comp.		D dia.	D dia.	D dia.	L	Price INR
				Compr.	Expan.					
KWFLK1/DIA	K11176233193	M3 - M12	KWES1B	7.50	7.50	36	20	19	40	5545
KWFLK1/DIA	K11177233193	M3 - M12	KWES1B	7.50	7.50	36	25	19	40	5545
KWFLK1/DIA	K11178233193	M3 - M12	KWES1B	7.50	7.50	36	32	19	40	5545
KWFLK2/DIA	K11177234193	M8 - M20	KWES2B	12.50	12.50	53	25	31	63	6925
KWFLK2/DIA	K11178234193	M8 - M20	KWES2B	12.50	12.50	53	32	31		6369
KWFLK2/DIA	K11179234193	M8 - M20	KWES2B	12.50	12.50	53	40	31	63	6925
KWFLK3/DIA	K11178235193	M14 - M33	KWES3B	20.00	20.00	78	32	60	125	13165
KWFLK3/DIA	K11179235193	M14 - M33	KWES3B	20.00	20.00	78	40	60	125	13165
KWFLK4/DIA	K11179236193	M22 - M48	KWES2B	22.50	22.50	96	40	60	126	22680
KWFLK4/DIA	K11180236193	M22 - M48	KWES2B	22.50	22.50	96	50	60	126	23400

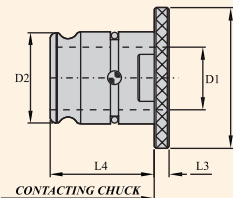
TYPE KWES SIZE : 1, 2, 3 & 4

Quick Change Tapping Chuck Type KWES/B



Ordering Example : TAP ADAPTOR : KWES/1B M8 0 10X8sq. = 2Nos.

Item Name	For Taps		Suitable for Chuck Size	D dia.	D1 dia.	D2 dia.	l1	l3	l4	l5	Approx. Weight kgs	Price INR
	Thread	Shank										
WES 0B	M1 - M10	2.5 - 7.2	0	23	13	13	15	20	19.5	21	0.060	1330
WES 1B	M3 - M12	3.5 - 11.3	1	32	19	19	17	25	21.5	25	0.150	1330
WES 2B	M8 - M20	7.0 - 18.0	2	50	30	31	30	31	35.0	34	0.550	1750
WES 3B	M14 - M33	11.0 - 28.0	3	72	48	48	44	41	55.5	45	1.700	4990
WES 4B	M22 - M48	18.0 - 36.0	4	95	60	60	71	61	63.0	68	3.300	8315



Ordering Example : REDUCER : KWRE 2/1/ = 2Nos.

Item Name	Suitable for Chuck size	Adaptor size	D dia.	D1 dia.	D2 dia.	L3	L4	Price INR
KWRE 2/1	2	1	48	19	31	5	35.0	755
KWRE 3/1	3	1	70	19	48	6	55.5	1510
KWRE 3/2	3	2	70	31	48	6	55.5	1510
KWRE 4/2	4	2	92	31	60	13	60.0	4320
KWRE 4/3	4	3	92	48	60	13	60.0	4320

REVOLVING CENTER

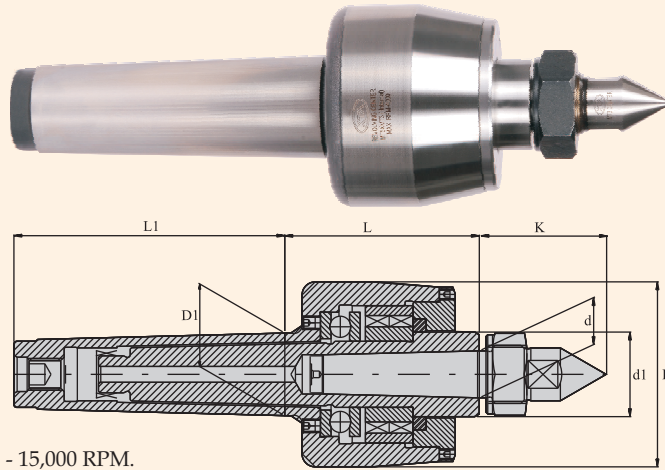
FEATURES:

- Three bearings construction
- Life long lubricated with special grease isoflex NBU15
- Main body & sleeve hardened & ground.
- Operator friendly design for dismantling & assembling. The user can change the bearings after long use or wear within few hours , all details are shown in schematic drawing.
- Being standard MT2 & MT3 internal tapers in MT4 & MT5 revolving centers respectively, easy to replace centers of standard angle to, 30 degrees angle to pipe center . OR....
- Maximum permissible R.P.M
For MT4 revolving center: 4000 RPM
For MT5 revolving center: 3000 RPM
- Accuracy :On master mandrel within 0.010 MM MAX.





REVOLVING CENTER

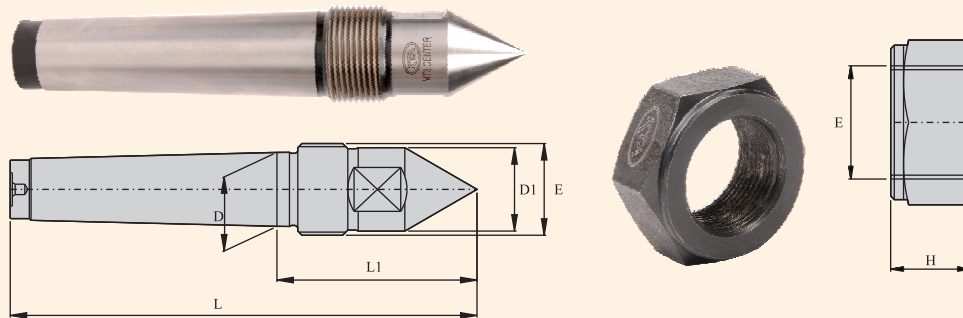


Balanced to G 6.3 - 15,000 RPM.

Item Name	Item Code	D	D1	d	d1	L	L1	K	Price INR
Mt3 Revolving Center with External Mt1 Taper	K10042290306127	6.0	23.8.5	Mt1 Internal 12.07	25	60	81	49	8300
Mt4 Revolving Center with External Mt2 Taper	K10143290303127	70.00	31.267	Mt2 Internal 17.78	32.00	73.50	102.50	48.00	10050
Mt5 Revolving Center with External Mt3 Taper	K10144290299127	87.50	44.399	Mt3 Internal 23.825	40.00	94.00	129.50	57.00	12800

CENTER

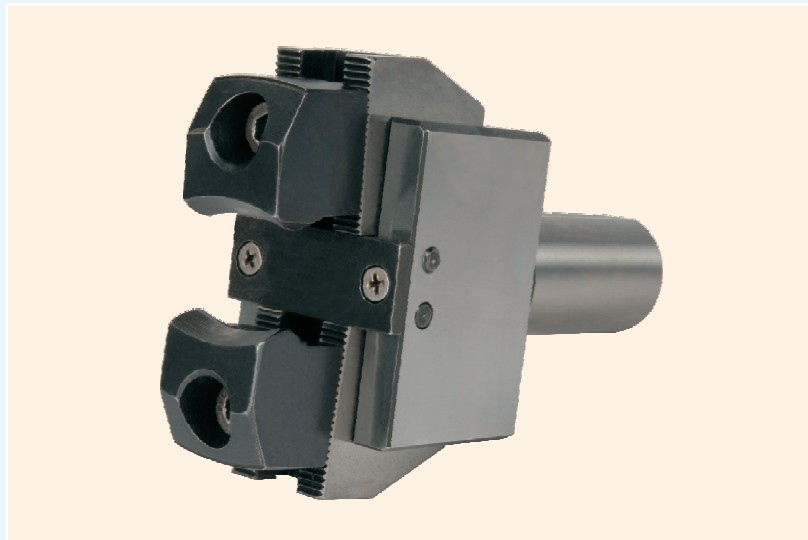
EXTRACTOR NUT



Balanced to G 6.3 - 15,000 RPM.

Item Name	Item Code	D	D1	L	L1	H	E	Price INR
MT 1 Center	K10147364301127	12.07	17.50	100.28	48	15.00	M16X1.5P	600
MT 2 Center	K10147368301127	17.78	20.00	112.00	48.00	15.00	M22X1.5P	800
MT 3 Center	K10147366301127	32.825	24.00	138.00	57.00	17.50	M27X1.5P	1000

BAR PULLERS (FOR CNC LATHES)

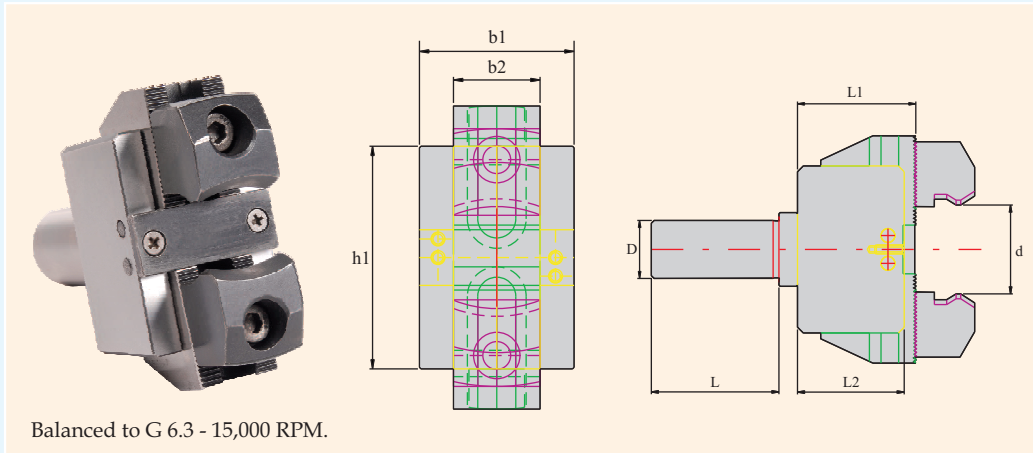


FEATURES:

- 'KTA' BAR PULLER is unique with bar pulling capacity from 6.0 mm to 50.0 mm.
- This occupies only one station in the Turret.
- This is very good for small to medium sizes batch production.
- In many cases you can avoid bar feeders which occupies lot of space.
- This is available in standard cylindrical dia. 20, 25, 32, & 40 as per Din 1835 B+E (VDI & spl mounting on request).
- Please go through the schematric diagram which shows the simplicity of the holder function.
- Most suitable for CNC Lathes; CNC Turn - Mill Centers.



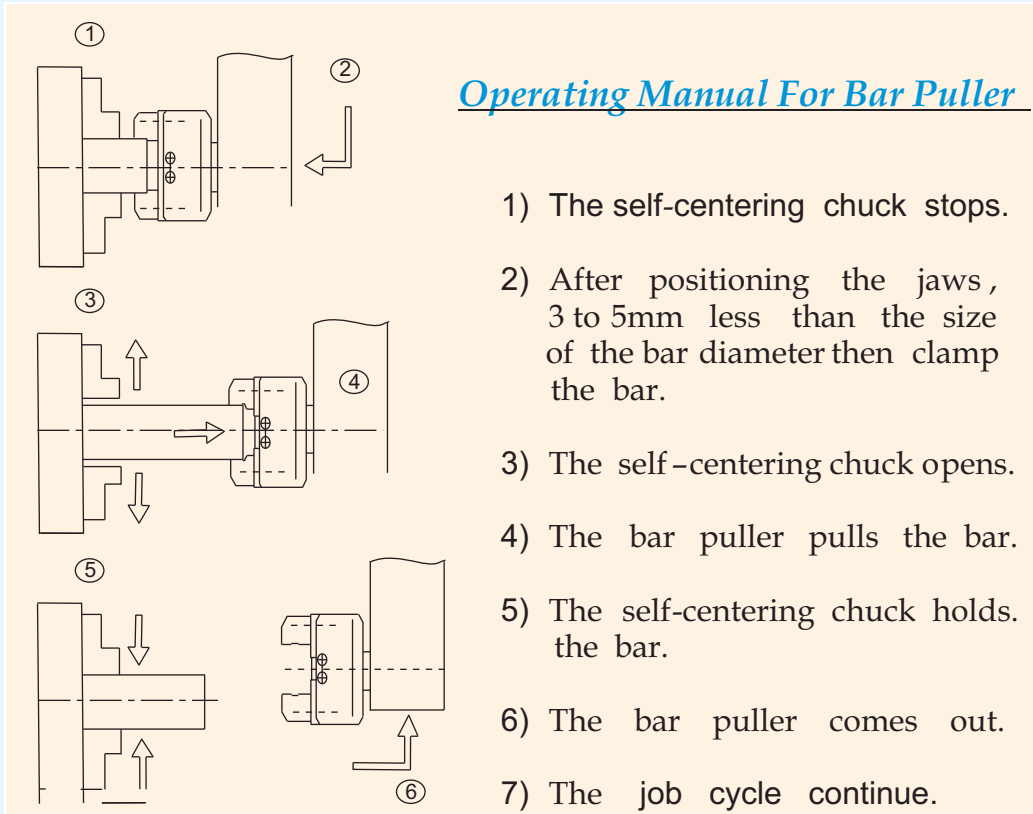
BAR PULLER



Balanced to G 6.3 - 15,000 RPM.

BAR PULLER	Item Code	d	D	L	L1	L2	b1	b2	h1	Price INR
Dia. 25 BAR PULLER	K10161367301127	6-50	25	55	51	46	50	28	72	24,000
Dia. 32 BAR PULLER	K10162367301127	6-50	32	55	51	46	50	28	72	24,000

'D': DIFFERENT SHANKS LIKE DIA40, VDI30, VDI40, & ANY SPECIALS POSSIBLE.



Operating Manual For Bar Puller

- 1) The self-centering chuck stops.
- 2) After positioning the jaws , 3 to 5mm less than the size of the bar diameter then clamp the bar.
- 3) The self-centering chuck opens.
- 4) The bar puller pulls the bar.
- 5) The self-centering chuck holds the bar.
- 6) The bar puller comes out.
- 7) The job cycle continue.

Balanced to G 6.3 - 15,000 RPM.

FLOATING REAMER HOLDER

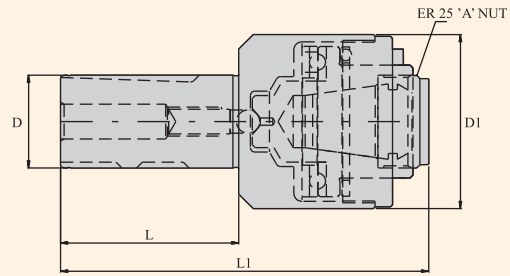
FEATURES:

- This is a short length Floating Reamer Holder with radial parallel float of 1.0 mm.
- This has got a special mechanism of weight balancing ; at the end.
- This Reamer Holder is with (ER 25A collet chuck) Capacity 2.0 to 16.0 mm.
- This can be used on any CNC Lathe ; This is available with cylindrical shank Dia 20, 25 & 32mm as per DIN 1835 B+E. (VDI spl mounting on request)
- This solves almost all Reaming problems such as ; over size cutting; bell-mouth; surface finish.
- So it is best for correct size with repeatability ; with very good Surface finish.





FLOATING REAMER HOLDER (FRH)



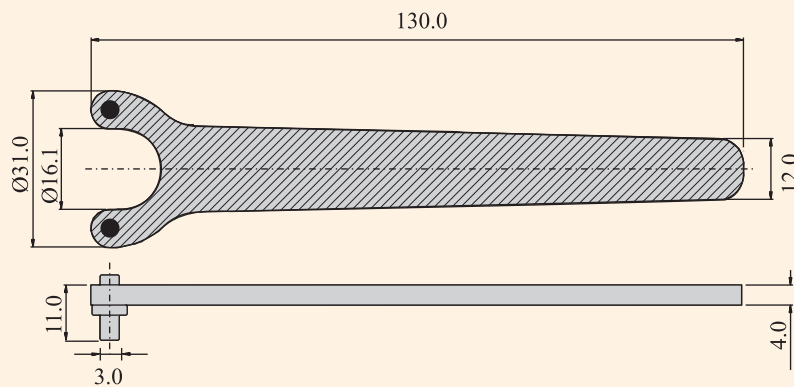
CAPACITY = FROM 2.0MM TO 16.0MM

FLOAT RADIAL PARALLEL = 1.0MM

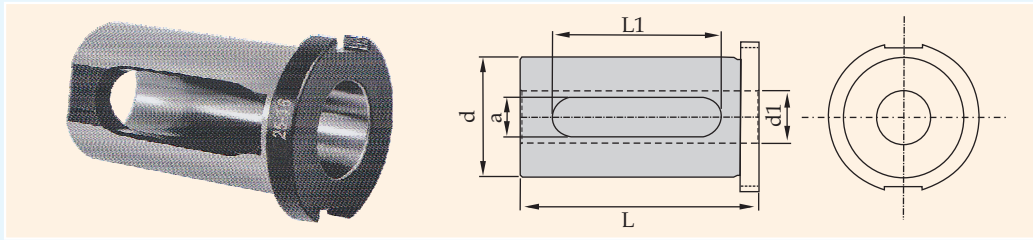
COLLETS REQUIRED ER 25

Item Name	Item Code	D	L	D1	L1	Price INR
Dia. 20 FRH X ER 25 A	K10160289302127	20.0	51.0	60.0	116.0	6930
Dia. 25 FRH X ER 25 A	K10161289302127	25.0	56.0	60.0	121.0	6930
Dia. 32 FRH X ER 25 A	K10162289302127	32.0	61.0	60.0	126.0	6930

ER25 A-TYPE NUT SPANNER



REDUCTION BUSH FOR BORING BAR HOLDER



Item Name	Item Code	d	d1	L	a	L1	Price INR
RB 02506	K10258222338127	25	6	50	10.5	35	530
RB 02508	K10258222339127	25	8	50	10.5	35	530
RB 02510	K10258222340127	25	10	50	10.5	35	530
RB 02512	K10258222341127	25	12	50	10.5	35	530
RB 02514	K10258222473127	25	14	50	10.5	35	530
RB 02516	K10258222272127	25	16	50	10.5	35	530
RB 03206	K10258229338127	32	6	70	10.5	45	620
RB 03208	K10258229339127	32	8	70	10.5	45	620
RB 03210	K10258229340127	32	10	70	10.5	45	620
RB 03212	K10258229341127	32	12	70	10.5	45	620
RB 03214	K10258229473127	32	14	70	10.5	45	620
RB 03216	K10258229272127	32	16	70	10.5	45	620
RB 03220	K10258229273127	32	20	70	10.5	45	620
RB 03225	K10258229274127	32	25	70	10.5	45	620
RB 04006	K10258378338127	40	6	80	12.5	52	800
RB 04008	K10258378339127	40	8	80	12.5	52	800
RB 04010	K10258378340127	40	10	80	12.5	52	800
RB 04012	K10258378341127	40	12	80	12.5	52	800
RB 04014	K10258378473127	40	14	80	12.5	52	800
RB 04016	K10258378272127	40	16	80	12.5	52	800
RB 04020	K10258378273127	40	20	80	12.5	52	800
RB 04025	K10258378274127	40	25	80	12.5	52	800
RB 04032	K10258378275127	40	32	80	12.5	52	800

WORK HOLDING COLLET CHUCK ASSEMBLY



Item Name	Item Code	D	D1	D2	D3	D4	D5	L	L1	L2	G	Price INR
Collet Chuck A-25/ A2-5	K10257484471127	132	104.8	110	32	34.5	11x6Nos	119	15.5	25	M58x1.5P	18400
Collet Chuck A-42/ A2-5	K10257485471127	132	104.8	110	48	51.5	11x6Nos	121	20	25	M58x1.5P	24200
Collet Chuck A-60/ A2-6	K10257486472127	165	133	132.5	66	73.5	13x6Nos	135	20	25	M80x1.2P	30400

Item Name	Item Code	Price INR
CONVERSION KIT A-42/ A-25	K10259485475127	10200
CONVERSION KIT A-60/ A-42	K10259486476127	13800



KTA Spindle Toolings
Corporate Office &
Works : Pune

KTA Spindle Toolings

Works : 246/9, Hinjewadi, Near Tata Johnson,
Tal. Mulshi, Dist. Pune. Pin - 411 057.
(MAHARASHTRA) INDIA.

Tel. Works :+91 20 - 64001283, 66740039, 20270680

Fax Works:+91 20 - 66740038

E-mail : info@ktaspindletoolings.com,
sales@ktaspindletoolings.com

Visit us at : www.ktaspindletoolings.com

DEALERS