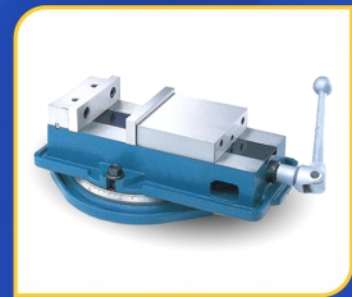




SINCE 1995

AN ISO 9001 : 2015 CERTIFIED CO.



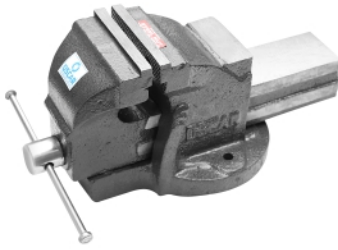
Price List No. 135 (w.e.f. 1st June 2021)



M/S AMBAY TOOLS CO. (INDIA)

CATALOGUE

Code No. 840
HSN CODE 82057000



BENCH VICE DOUBLE RIB
Fixed Base

| Size in Inches | Prices ₹ C.I. | Prices ₹ S.G. Iron |
|----------------|---------------|--------------------|
| 3 | | |
| 3 1/2 | | |
| 4 | | |
| 4 1/2 | | |
| 5 | | |
| 6 | | |
| 8 | | |
| 10 | | |
| 12 | | |

Code No. 840 S
HSN CODE 82057000



BENCH VICE DOUBLE RIB
Swivel Base

| Size in Inches | Prices ₹ Fixed Base |
|----------------|---------------------|
| 3 | |
| 3 1/2 | |
| 4 | |
| 4 1/2 | |
| 5 | |
| 6 | |
| 8 | |
| 10 | |
| 12 | |

Code No. 841
HSN CODE 82057000



BENCH VICE SINGLE RIB

| Size in Inches | Prices ₹ Fixed Base | Prices ₹ Fixed Base |
|----------------|---------------------|---------------------|
| 2 1/2 | | |
| 3 | | |
| 3 1/2 | | |
| 4 | | |
| 4 1/2 | | |
| 5 | | |
| 6 | | |
| 8 | | |
| 10 | | |
| 12 | | |

Code No. 843
HSN CODE 82057000



BENCH VICE ECONOMY

| Size in Inches | Prices ₹ Fixed Base |
|----------------|---------------------|
| 3 | |
| 4 | |
| 5 | |
| 6 | |
| 8 | |
| 10 | |
| 12 | |

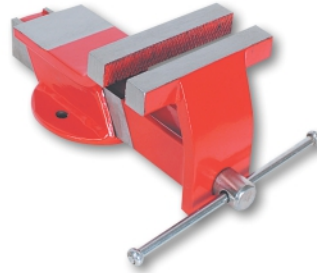
Code No. 843 S
HSN CODE 82057000



BENCH VICE ECONOMY S.G. BODY

| Size in Inches | Prices ₹ Fixed Base |
|----------------|---------------------|
| 3 | |
| 4 | |
| 5 | |
| 6 | |
| 8 | |
| 10 | |
| 12 | |

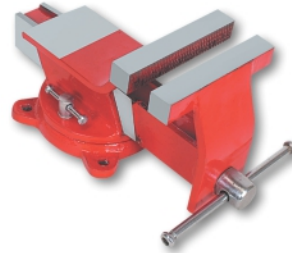
Code No. 805
HSN CODE 82057000



BENCH VICE ALL STEEL

| Size in Inches | Prices ₹ Fixed Base |
|----------------|---------------------|
| 3 | |
| 4 | |
| 5 | |
| 6 | |
| 8 | |
| 10 | |
| 12 | |

Code No. 805 S
HSN CODE 82057000



BENCH VICE ALL STEEL (SWIVEL)

| Size in Inches | Prices ₹ Fixed Base |
|----------------|---------------------|
| 3 | |
| 4 | |
| 5 | |
| 6 | |
| 8 | |

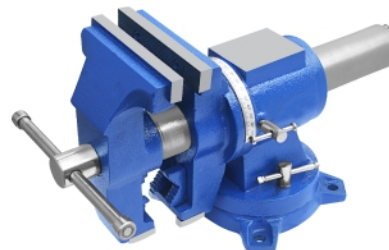
Code No. 844
HSN CODE 82057000



PRECISION MACHINIST BENCH VICE

| Size in Inches | Prices ₹ Fixed Base |
|----------------|---------------------|
| 4 | |
| 5 | |
| 6 | |

Code No. 887
HSN CODE 82057000



MULTIPURPOSE VICE

| Size in Inches | Prices ₹ Fixed Base |
|----------------|---------------------|
| 4 | |
| 5 | |
| 6 | |

Code No. 839
HSN CODE 82057000

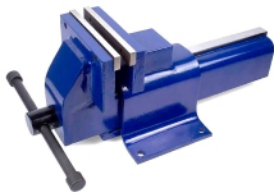


QUICK ACTION BENCH VICE

| Size in Inches | Prices ₹ Fixed Base |
|----------------|---------------------|
| 4 | |
| 5 | |
| 6 | |

Code No. 842
HSN CODE 82057000

BENCH VICE - FABRICATED



| Size in Inches | Prices ₹ |
|----------------|----------|
| 4 | |
| 5 | |
| 6 | |
| 8 | |

Code No. 830
HSN CODE 84669390

3 WAY TILTING & SWIVELING VICE



| Size in Inches | Prices ₹ |
|----------------|----------|
| 3 | |
| 4 | |
| 6 | |

Code No. 845
HSN CODE 82057000

LEG VICE



| Size in Inches | Prices ₹ |
|----------------|----------|
| 4 | |
| 6 | |

Code No. 801
HSN CODE 84669390

UNIVERSAL MACHINE VICE (S.G. IRON BODY)



| Size in Inches | Prices ₹ |
|----------------|----------|
| 2 | |
| 3 | |
| 4 | |
| 6 | |

Code No. 800
HSN CODE 84669390

TILTING & SWIVELING VICE



| Size in Inches | Prices ₹ |
|----------------|----------|
| 4 | |
| 5 | |
| 6 | |
| 8 | |

Code No. 802P
HSN CODE 84669390

SHAPER MACHINE VICE Fixed Base



| Size in Inches | Prices ₹ |
|----------------|----------|
| 6 | |
| 8 | |
| 10 | |
| 12 | |
| 16 | |

Code No. 800 S
HSN CODE 84669390

TILTING & SWIVELING VICE (S.G. BODY)



| Size in Inches | Prices ₹ |
|----------------|----------|
| 2 | |
| 3 | |
| 4 | |
| 5 | |
| 6 | |
| 8 | |

Code No. 802
HSN CODE 84669390

SHAPER MACHINE VICE Swivel Base



| Size in Inches | Prices ₹ |
|----------------|----------|
| 6 | |
| 8 | |
| 10 | |
| 12 | |
| 16 | |

Code No. 851
HSN CODE 84669390

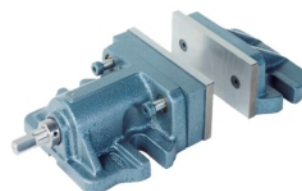
TILTING & SWIVELING VICE (J&S TYPE)



| Size in Inches | Prices ₹ |
|----------------|----------|
| 4 | |
| 6 | |

Code No. 905
HSN CODE 84669390

TWO PIECE ADJUSTABLE MILLING VICE



| Size in Inches | Prices ₹ |
|----------------|----------|
| 6 | |
| 8 | |

Code No. 803P
HSN CODE 84669390



MILLING MACHINE VICE
Fixed Base

| Size in Inches | Prices ₹ |
|----------------|----------|
| 4" | |
| 5" | |
| 6" | |
| 8" | |
| 10" | |
| 12" | |

Code No. 850P
HSN CODE 84669390



MILLING MACHINE VICE
Fixed Base
J & S Type

| Size in Inches | Prices ₹ |
|----------------|----------|
| 4" | |
| 6" | |
| 8" | |

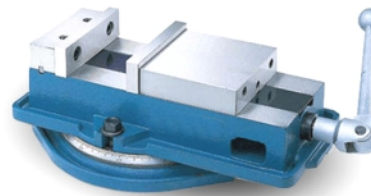
Code No. 803
HSN CODE 84669390



MILLING MACHINE VICE
Swivel Base

| Size in Inches | Prices ₹ |
|----------------|----------|
| 4" | |
| 5" | |
| 6" | |
| 8" | |
| 10" | |
| 12" | |

Code No. 852
HSN CODE 84669390



TILT LOCK MACHINE VICE
Swivel Base

| Size in Inches | Prices ₹ |
|----------------|----------|
| 4" | |
| 5" | |
| 6 x 6" | |
| 6 x 8" | |
| 8 x 8" | |
| 8 x 10" | |

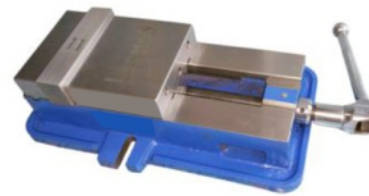
Code No. 803S
HSN CODE 84669390



MILLING MACHINE VICE
Swivel Base
S.G. Iron Body

| Size in Inches | Prices ₹ |
|----------------|----------|
| 2" | |
| 3" | |
| 4" | |
| 5" | |
| 6" | |
| 8" | |

Code No. 852P
HSN CODE 84669390



TILT LOCK MACHINE VICE
Fixed Base

| Size in Inches | Prices ₹ |
|----------------|----------|
| 4" | |
| 5" | |
| 6 x 6" | |
| 6 x 8" | |
| 8 x 8" | |
| 8 x 10" | |

Code No. 803PS
HSN CODE 84669390



MILLING MACHINE VICE
Fixed Base
S.G. Iron Body

| Size in Inches | Prices ₹ |
|----------------|----------|
| 2" | |
| 3" | |
| 4" | |
| 5" | |
| 6" | |
| 8" | |

Code No. 804
HSN CODE 84669390



HYDRAULIC MACHINE VICE
Swivel Base

| Size | Prices ₹ |
|---------|----------|
| 6 x 200 | |
| 6 x 300 | |

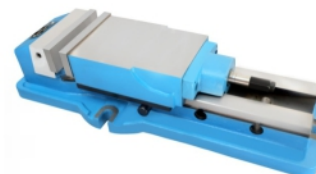
Code No. 850
HSN CODE 84669390



MILLING MACHINE VICE
Swivel Base
J & S Type

| Size in Inches | Prices ₹ |
|----------------|----------|
| 4" | |
| 6" | |
| 8" | |

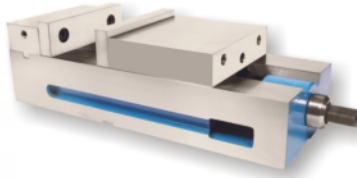
Code No. 804P
HSN CODE 84669390



HYDRAULIC MACHINE VICE
Fixed Base

| Size | Prices ₹ |
|---------|----------|
| 6 x 200 | |
| 6 x 300 | |

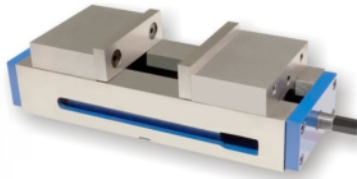
Code No. 835V
HSN CODE 84669390



PRECISION TILT LOCK MACHINE VICE

| Size in Inches | Prices ₹ |
|----------------|----------|
| 6" | |

Code No. 835SCV
HSN CODE 84669390



SELF CENTERING TILT LOCK MACHINE VICE

| Size in Inches | Prices ₹ |
|----------------|----------|
| 6" | |

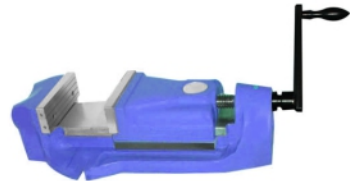
Code No. 888
HSN CODE 84669390



HEAVY DUTY PRECISION MACHINE VICE Swivel Base S.G. Iron Body

| Size in Inches | Prices ₹ |
|----------------|----------|
| 6" | |

Code No. 888P
HSN CODE 84669390



HEAVY DUTY PRECISION MACHINE VICE Fixed Base S.G. Iron Body

| Size in Inches | Prices ₹ |
|----------------|----------|
| 6" | |

Code No. 821
HSN CODE 84669390



UNIVERSAL COMPOUND VICE S.G. Iron Body

| Size in Inches | Prices ₹ |
|----------------|----------|
| 6" | |

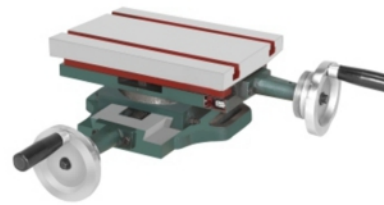
Code No. 808S
HSN CODE 84669390



SINGLE SLIDING TABLE

| Size in Inches | Prices ₹ |
|----------------|----------|
| 6 x 6" | |
| 8 x 8" | |

Code No. 808
HSN CODE 84669390



COMPOUND SLIDING TABLE

| Size in Inches | Prices ₹ |
|----------------|----------|
| 6 x 6" | |
| 8 x 8" | |
| 12 x 8" | |
| 12 x 12" | |
| 12 x 20" | |
| 16 x 16" | |

Code No. 902
HSN CODE 84669390



SWIVEL ANGLE TABLE

| Size in Inches | Prices ₹ |
|----------------|----------|
| 5 x 6" | |
| 6 x 8" | |
| 8 x 10" | |
| 10 x 12" | |
| 12 x 15" | |

Code No. 903
HSN CODE 84669390



TILTING TABLE

| Size in Inches | Prices ₹ |
|----------------|----------|
| 5 x 7" | |
| 7 x 10" | |
| 10 x 15" | |

Code No. 904
HSN CODE 84669390



UNIVERSAL TILTING TABLE

| Size in Inches | Prices ₹ |
|----------------|----------|
| 4 x 5" | |
| 6 x 8" | |
| 8 x 10" | |

Code No. 808VS
HSN CODE 84669390



VERTICAL SLIDING TABLE Fixed & Swivel Base

| Size in Inches | Prices ₹ |
|----------------|----------|
| 5 x 4"- Fixed | |
| 5 x 4"- Swivel | |

Code No. 811
HSN CODE 84669390

ROTARY MILLING TABLE
Horizontal & Vertical
Without Indexing Device



| Size in Inches | Prices ₹ |
|----------------|----------|
| 6" | |
| 8" | |
| 10" | |
| 12" | |
| 15" | |
| 18" | |
| 20" | |

Code No. 811ID
HSN CODE 84669390

ROTARY MILLING TABLE
Horizontal & Vertical
With Indexing Device



| Size in Inches | Prices ₹ |
|----------------|----------|
| 6" | |
| 8" | |
| 10" | |
| 12" | |
| 15" | |
| 18" | |
| 20" | |

Code No. 815
HSN CODE 84669390

ROTARY MILLING TABLE
Horizontal
Without Indexing Device



| Size in Inches | Prices ₹ |
|----------------|----------|
| 6" | |
| 8" | |
| 10" | |
| 12" | |
| 15" | |
| 18" | |
| 20" | |

Code No. 815
HSN CODE 84669390

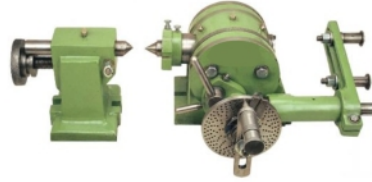
ROTARY MILLING TABLE
Horizontal
With Indexing Device



| Size in Inches | Prices ₹ |
|----------------|----------|
| 6" | |
| 8" | |
| 10" | |
| 12" | |
| 15" | |
| 18" | |
| 20" | |

Code No. 848
HSN CODE 84669390

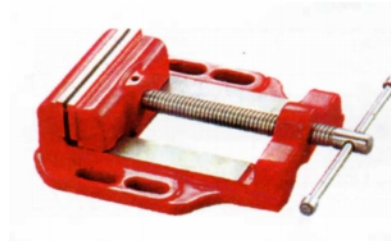
DIVIDING HEAD WITH COMPLETE GEAR SET



| Size in Inches | Prices ₹ |
|----------------|----------|
| 4-1/2" | |
| 5-1/2" | |
| 6-1/2" | |
| 7-1/2" | |

Code No. 825
HSN CODE 82057000

DRILL VICE COMMERCIAL DUTY



| Size in Inches | Prices ₹ |
|----------------|----------|
| 2" | |
| 3" | |
| 4" | |
| 5" | |
| 6" | |

S.G. Iron Body

| | |
|----|--|
| 3" | |
| 4" | |
| 5" | |
| 6" | |

Code No. 813
HSN CODE 82057000

DRILL VICE HEAVY DUTY



| Size in Inches | Prices ₹ |
|----------------|----------|
| 3" | |
| 4" | |
| 5" | |
| 6" | |
| 8" | |
| 12" | |

Code No. 813S
HSN CODE 82057000

DRILL VICE HEAVY DUTY

S.G. Iron Body

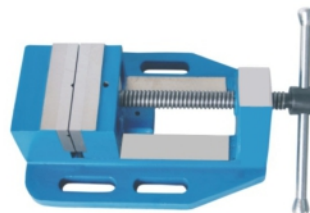


| Size in Inches | Prices ₹ |
|----------------|----------|
| 3" | |
| 4" | |
| 5" | |
| 6" | |
| 8" | |
| 10" | |
| 12" | |

Code No. 860S
HSN CODE 82057000

DRILL VICE EXTRA HEAVY DUTY

S.G. Iron Body



| Size in Inches | Prices ₹ |
|----------------|----------|
| 4" | |
| 6" | |

C.I. Body

| | |
|----|--|
| 3" | |
| 4" | |
| 6" | |

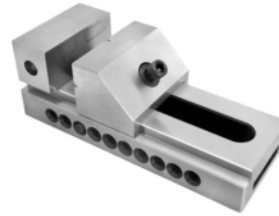
Code No. 812
HSN CODE 82057000



DRILL VICE SUPER DELUXE

| Size in Inches | Prices ₹ |
|----------------|----------|
| 4" | |
| 6" | |
| 8" | |

Code No. 896
HSN CODE 82057000



PRECISION SCREWLESS VICE

| Size in Inches | Prices ₹ |
|----------------|----------|
| 2" | |
| 3" | |
| 4" | |
| 6" | |

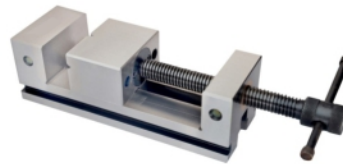
Code No. 822
HSN CODE 82057000



DRILL VICE PRECISION

| Size in Inches | Prices ₹ |
|----------------|----------|
| 3" | |
| 4" | |
| 5" | |
| 6" | |

Code No. 897
HSN CODE 82057000



PRECISION GRINDING VICE

| Size in Inches | Prices ₹ |
|----------------|----------|
| 2" | |
| 3" | |
| 4" | |
| 6" | |

Code No. 826
HSN CODE 82057000



PRECISION DRILL VICE

| Size in Inches | Prices ₹ |
|----------------|----------|
| 4" | |
| 6" | |

Code No. 898S
HSN CODE 82057000



PRECISION SINE VICE - SCREWLESS

| Size in Inches | Prices ₹ |
|----------------|----------|
| 3" | |
| 4" | |

Code No. 827
HSN CODE 82057000



PRECISION UNIGRIP VICE

| Size in Inches | Prices ₹ |
|----------------|----------|
| 3" | |
| 4" | |
| 5" | |

Code No. 898
HSN CODE 82057000



PRECISION SINE VICE

| Size in Inches | Prices ₹ |
|----------------|----------|
| 3" | |
| 4" | |

Code No. 827U
HSN CODE 82057000



3 WAY PRECISION UNIGRIP VICE

| Size in Inches | Prices ₹ |
|----------------|----------|
| 4" | |

Code No. 899
HSN CODE 82057000



ARMATURE DRILL VICE

| Size in Inches | Prices ₹ |
|----------------|----------|
| 4" | |

Code No. 810
HSN CODE 82057000



UNIGRIP MACHINE VICE

| Size in Inches | Prices ₹ |
|----------------|----------|
| 3" | |
| 4" | |
| 6" | |

Code No.
HSN CODE 82057000

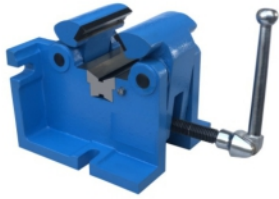


SELF CENTERING CORNER WELDING VICE

| Size in Inches | Prices ₹ |
|----------------|----------|
| 4" | |
| 5" | |

Code No. 853
HSN CODE 84669390

SELF CENTERING SHAFT VICE



| Size | Prices ₹ |
|----------|-------------|
| 10 - 80 | |
| 50 - 150 | |

Code No. 814S
HSN CODE 82057000

SELF CENTERING VICE



| Size in Inches | Prices ₹ |
|----------------|-------------|
| 4" | |
| 6" | |

Code No. 855
HSN CODE 73082011

GIANT SLOTTED ANGLE PLATE



| Size | Prices ₹ |
|-------------|-------------|
| 400x300x225 | |
| 500x400x300 | |
| 600x500x450 | |

Code No. 858 **WOODWORKING VICE COMMERCIAL DUTY**
HSN CODE 82057000



| Size in Inches | Prices ₹ |
|----------------|-------------|
| 6 | 1560.00 |
| 7 | 1840.00 |
| 8 | 2160.00 |
| 9 | 2560.00 |
| 10 | 3240.00 |
| 12 | 4320.00 |

Code No. 858 H **WOODWORKING VICE HEAVY DUTY**
HSN CODE 82057000



| Size in Inches | Prices ₹ |
|----------------|-------------|
| 6 | |
| 7 | |
| 8 | |
| 9 | |

Code No. 858 QR **WOODWORKING VICE QUICK RELEASE**
HSN CODE 82057000



| Size in Inches | Prices ₹ |
|----------------|-------------|
| 7 | |
| 8 | |
| 9 | |

Code No. 828 **PIPE VICE OPEN TYPE - C.I.BODY**
HSN CODE 82057000



| Size in Inches | Prices ₹ |
|----------------|-------------|
| 1/8x1/4 | |
| 14x2 | |
| 1/4x3 | |
| 1/4x4 | |
| 2x6 | |
| 2x8 | |
| 2x10 | |

Code No. 820 S **PIPE VICE OPEN TYPE - S.G.BODY**
HSN CODE 82057000



| Size in Inches | Prices ₹ |
|----------------|-------------|
| 1/4x2 | |
| 1/4x3 | |
| 1/4x4 | |

Code No. 829 **PIPE VICE OPEN TYPE - FABRICATED STEEL**
HSN CODE 82057000



| Size in Inches | Prices ₹ |
|----------------|-------------|
| 2 | |
| 3 | |
| 4 | |

Code No. 831 **PIPE VICE SQUARE PILLAR**
HSN CODE 82057000



| Size in Inches | Prices ₹ |
|----------------|-------------|
| 1.1/2 | |
| 2 | |
| 3 | |
| 4 | |
| 6 | |
| 8 | |
| 12 | |

Code No. 832 **PIPE VICE ROUND PILLAR**
HSN CODE 82057000



| Size in Inches | Prices ₹ |
|----------------|-------------|
| 1.1/2 | |
| 2 | |
| 3 | |
| 4 | |

Code No. 833
HSN CODE 82057000

SELF LOCKING PIPE VICE



| Size in Inches | Prices ₹ |
|----------------|----------|
| 1.1/2 | |
| 2 | |
| 2.1/2 | |
| 3.1/2 | |
| 4.1/2 | |
| 6 | |

Code No. 818 D
HSN CODE 82057000

BABY VICE WITH CLAMP-DELUXE MODEL



| Size in mm | Prices ₹ |
|------------|----------|
| 30 | |
| 40 | |
| 50 | |
| 60 | |
| 75 | |
| 100 | |

Code No. 834
HSN CODE 82057000

CHAIN PIPE VICE



| Size in Inches | Prices ₹ |
|----------------|----------|
| 2 | |
| 3 | |
| 4 | |
| 6 | |
| 8 | |

Code No. 818 DS
HSN CODE 82057000

BABY VICE CLAMP SWIVEL-DELUXE MODEL



| Size in mm | Prices ₹ |
|------------|----------|
| 30 | |
| 40 | |
| 50 | |
| 60 | |
| 75 | |

Code No. 835
HSN CODE 82057000

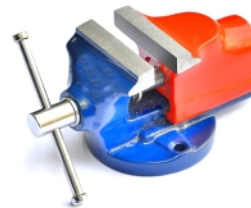
CHAIN VICE FOR HAND PUMP



| Size in Inches | Prices ₹ |
|----------------|----------|
| 2 | |
| 3 | |

Code No. 819
HSN CODE 82057000

BABY VICE FIXED-DELUXE MODEL



| Size in mm | Prices ₹ |
|------------|----------|
| 30 | |
| 40 | |
| 50 | |
| 60 | |
| 75 | |

Code No. 836
HSN CODE 82057000

HAND VICE



| Size in Inches | Prices ₹ |
|----------------|----------|
| 3 | |
| 4 | |
| 5 | |
| 6 | |
| 8 | |

Code No. 819 S
HSN CODE 82057000

BABY VICE SWIVEL-DELUXE MODEL



| Size in mm | Prices ₹ |
|------------|----------|
| 30 | |
| 40 | |
| 50 | |
| 60 | |
| 75 | |

Code No. 837
HSN CODE 82057000

DRAW VICE



| Size in Inches | Prices ₹ |
|----------------|----------|
| 6 | |
| 8 | |
| 10 | |
| 12 | |

Code No. 818
HSN CODE 82057000

BABY VICE ORDINARY



| Size in mm | Prices ₹ |
|------------|----------|
| 30 | |
| 40 | |
| 50 | |
| 60 | |
| 75 | |
| 100 | |

Code No. 686
HSN CODE 82057000

TAP HANDLE - DROP FORGED



| Size in inches | Prices ₹ |
|----------------|----------|
| 1/4 | |
| 3/8 | |
| 1/2 | |
| 3/4 | |
| 1 | |

Code No. 681DF / SG
HSN CODE 82057000



G-CLAMP HEAVY DUTY S.G. IRON

| Size in mm | Prices ₹ Drop Forged | Prices ₹ S.G. Iron |
|------------|----------------------|--------------------|
| 50 | | |
| 75 | | |
| 100 | | |
| 150 | | |
| 200 | | |
| 250 | | |
| 300 | | |

Code No. 682
HSN CODE 82057000



G-CLAMP Forged Steel

| Size in mm | Prices ₹ |
|------------|----------|
| 50 | |
| 75 | |
| 100 | |
| 150 | |
| 200 | |
| 250 | |
| 300 | |
| 350 | |
| 400 | |
| 450 | |
| 600 | |

Code No. 930
HSN CODE 82057000



CLAMPING KIT (34 PCS.)

| Model | Size in M | Prices ₹ |
|-------|-----------|----------|
| 930-1 | 14-12 | 8800.00 |
| 930-2 | 16-12 | 8900.00 |
| 930-3 | 18-12 | 9000.00 |
| 930-4 | 18-16 | 10980.00 |

Code No. 931
HSN CODE 82057000



CLAMPING KIT (58 PCS.)

| Model | Size in M | Prices ₹ |
|-------|-----------|----------|
| 930-1 | 14-12 | |
| 930-2 | 16-12 | |
| 930-3 | 18-12 | |
| 930-4 | 18-16 | |

Code No. 909
HSN CODE 90318000



SINGLE PLATE WITH MAGNETIC CHUCK

| Size in Inches | Length mm | Width mm | Prices ₹ |
|----------------|-----------|----------|----------|
| 6X4 | 150 | 100 | |
| 6X6 | 150 | 150 | |
| 8X6 | 200 | 200 | |

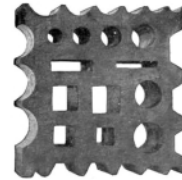
Code No. 910
HSN CODE 90318000



MAGNETIC ANGLE PLATE

| Length mm | Width mm | Height mm | Prices ₹ |
|-----------|----------|-----------|----------|
| 150 | 180 | 95 | |
| 200 | 180 | 95 | |

Code No. 906
HSN CODE 82055930



Swage Block

| Size in Inches | Prices ₹ |
|----------------|----------|
| 12x12x4 | |
| 12x12x5 | |
| 14x14x5 | |

Code No. 905
HSN CODE 82058020



Anvil

| Size in Kgs. | Prices ₹ |
|--------------|----------|
| 5 | |
| 10 | |
| 15 | |
| 20 | |
| 25 | |
| 50 | |
| 75 | |
| 100 | |
| 150 | |
| 200 | |

Code No. 689
HSN CODE 82057000



BEARING PULLER Drop Forged

| Size in inches | Prices ₹ 2 Leg | Prices ₹ 3 Leg | 3 Leg Extra Heavy |
|----------------|----------------|----------------|-------------------|
| 3 | | | |
| 4 | | | |
| 6 | | | |
| 8 | | | |
| 10 | | | |
| 12 | | | |

Code No. 690
HSN CODE 82057000



BEARING PULLER Forged Steel

| Size in inches | Prices ₹ |
|----------------|----------|
| 14 | |
| 16 | |
| 18 | |
| 20 | |
| 24 | |
| 30 | |
| 36 | |

Code No. 601
DOUBLE OPEN END SPANNER



HSN CODE 82041110

| Metric MM | Prices ₹ Per Pc. | Metric MM Special Sizes | Prices ₹ Per Pc. |
|-----------|------------------|-------------------------|------------------|
| 6 x 7 | | 27 x 32 | |
| 8 x 9 | | 30 x 36 | |
| 10 x 11 | | 32 x 36 | |
| 12 x 13 | | 34 x 36 | |
| 14 x 15 | | 34 x 38 | |
| 16 x 17 | | 35 x 37 | |
| 18 x 19 | | 36 x 38 | |
| 20 x 22 | | 36 x 41 | |
| 21 x 23 | | 41 x 46 | |
| 24 x 26 | | 46 x 50 | |
| 24 x 27 | | 50 x 55 | |
| 25 x 28 | | 55 x 60 | |
| 30 x 32 | | 60 x 65 | |
| | | 65 x 70 | |
| | | 70 x 75 | |
| | | 75 x 80 | |

| English WW | Prices ₹ Per Pc. |
|---------------|------------------|
| 3/4 x 7/8 | |
| 7/8 x 1 | |
| 7/8 x 1.1/8 | |
| 1 x 1-1/8 | |
| 1-1/8 x 1-1/4 | |
| 1-1/8 x 1-3/8 | |
| 1-1/4 x 1-3/8 | |

Code No. 602
DOUBLE OPEN END SPANNER SET



Cr-V Steel HSN CODE 82041110

| Size in MM | No. of Pcs. | Prices ₹ Per Pc. |
|-------------|-------------|------------------|
| 6x7 - 16x17 | 6 Pcs. | |
| 6x7 - 20x22 | 8 Pcs. | |
| 6x7 - 24x27 | 10 Pcs. | |
| 6x7 - 30x32 | 12 Pcs. | |

Code No. 603
BI-HEXAGONAL RING SPANNER SET



Cr-V Steel HSN CODE 82041110

| Size in MM | No. of Pcs. | Prices ₹ Per Pc. |
|-------------|-------------|------------------|
| 6x7 - 16x17 | 6 Pcs. | |
| 6x7 - 20x22 | 8 Pcs. | |
| 6x7 - 24x27 | 10 Pcs. | |
| 6x7 - 30x32 | 12 Pcs. | |

Code No. 604
BI-HEXAGONAL RING SPANNER



Cr-V HSN CODE 82041110

| Metric MM | Prices ₹ Per Pc. | Metric MM Special Sizes | Prices ₹ Per Pc. |
|-----------|------------------|-------------------------|------------------|
| 6 x 7 | | 32 x 36 | |
| 8 x 9 | | 34 x 36 | |
| 10 x 11 | | 34 x 38 | |
| 12 x 13 | | 35 x 37 | |
| 14 x 15 | | 36 x 38 | |
| 16 x 17 | | 36 x 41 | |
| 18 x 19 | | 41 x 46 | |
| 20 x 22 | | 46 x 50 | |
| 21 x 23 | | 50 x 55 | |
| 24 x 27 | | 55 x 60 | |
| 25 x 28 | | 60 x 65 | |
| 30 x 32 | | 65 x 70 | |
| | | 70 x 75 | |
| | | 75 x 80 | |

| English WW | Prices ₹ Per Pc. |
|---------------|------------------|
| 3/4 x 7/8 | |
| 7/8 x 1 | |
| 7/8 x 1.1/8 | |
| 1 x 1-1/8 | |
| 1-1/8 x 1-1/4 | |
| 1-1/8 x 1-3/8 | |

Code No. 605
BI-HEXAGONAL RING SPANNER



Cr-V Steel HSN CODE 82041110

| Metric MM | Prices ₹ Per Pc. |
|-----------|------------------|
| 33 | |
| 34 | |
| 35 | |
| 36 | |
| 38 | |
| 41 | |
| 46 | |
| 50 | |
| 55 | |
| 60 | |
| 65 | |
| 70 | |

Code No. 606
COMBINATION SPANNER SET



Cr-V Steel HSN CODE 82041110

| Size in MM | No. of Pcs. | Prices ₹ Per Pc. |
|------------------------------------|-------------|------------------|
| 8,9,10,11,13,17 mm | 6 Pcs. | |
| 6,8,10,11,13,14,17,19 mm | 8 Pcs. | |
| 6,7,8,9,10,11,12,13,14,17,19,22 mm | 12 Pcs. | |
| 6-32 mm | 25 Pcs. | |

Code No. 607
SLOGGING SPANENR



Open End HSN CODE 82041110

| Metric MM | Prices ₹ Per Pc. | Metric MM | Prices ₹ Per Pc. |
|-----------|------------------|-----------|------------------|
| 22 | | 80 | |
| 24 | | 85 | |
| 27 | | 90 | |
| 30 | | 95 | |
| 32 | | 100 | |
| 34 | | 105 | |
| 36 | | 110 | |
| 38 | | 115 | |
| 41 | | 120 | |
| 46 | | 125 | |
| 50 | | 130 | |
| 55 | | 135 | |
| 60 | | 140 | |
| 65 | | 145 | |
| 70 | | 150 | |
| 75 | | | |

Code No. 608
SLOGGING SPANENR



Cr-V Steel Ring End HSN CODE 82041110

| Metric MM | Prices ₹ Per Pc. | Metric MM | Prices ₹ Per Pc. |
|-----------|------------------|-----------|------------------|
| 22 | | 80 | |
| 24 | | 85 | |
| 27 | | 90 | |
| 30 | | 95 | |
| 32 | | 100 | |
| 34 | | 105 | |
| 36 | | 110 | |
| 38 | | 115 | |
| 41 | | 120 | |
| 46 | | 125 | |
| 50 | | 130 | |
| 55 | | 135 | |
| 60 | | 140 | |
| 65 | | 145 | |
| 70 | | 150 | |
| 75 | | | |

Code No. 601F
FISH BOLT SPANNER - DROP FORGED



Generally Confirming to JUS - 4835 HSN CODE 82041110

| Metric MM | Prices ₹ Per Pc. |
|-----------|------------------|
| 36 x 41 | |
| 41 x 46 | |

Code No. 609
SINGLE OPEN END SPANNER



HSN CODE 82041110

| Metric MM | Prices ₹ Per Pc. | Metric MM | Prices ₹ Per Pc. |
|-----------|------------------|-----------|------------------|
| 24 | | 70 | |
| 30 | | 75 | |
| 32 | | 80 | |
| 34 | | 85 | |
| 36 | | 90 | |
| 38 | | 95 | |
| 41 | | 100 | |
| 46 | | 105 | |
| 50 | | 110 | |
| 55 | | 115 | |
| 60 | | 120 | |
| 65 | | | |

Code No. 610
TUBULAR BOX SPANNER



HSN CODE 82041110

| Metric MM | Prices ₹ Per Pc. | Metric MM | Prices ₹ Per Pc. |
|------------------------|------------------|-----------|------------------|
| 6 x 7 | | 24 x 27 | |
| 8 x 9 | | 25 x 28 | |
| 10 x 11 | | 30 x 32 | |
| 12 x 13 | | 32 x 36 | |
| 14 x 15 | | 36 x 41 | |
| 16 x 17 | | 41 x 46 | |
| 17 x 19 | | 46 x 50 | |
| 18 x 19 | | 50 x 55 | |
| 20 x 22 | | 55 x 60 | |
| 21 x 23 | | 60 x 65 | |
| 22 x 24 | | 65 x 70 | |
| 24 x 26 | | 70 x 75 | |
| Spare Tommy Bar | | | |
| 12x250 | | | |

Code No. 611
TUBULAR BOX SPANNER SET



HSN CODE 82041110

| Metric MM | Prices ₹ Per Pc. |
|-------------------------|------------------|
| Set of 8 (6x7 - 20x22) | |
| Set of 12 (6x7 - 30x32) | |

Code No. 617
SLIDING BAR



Cr-V Steel HSN CODE 82042000

| Size | Prices ₹ Per Pc. |
|-----------|------------------|
| 1/2 X 12" | |
| 3/4 X 20" | |

Code No. 613
WHEEL SPANNER



HSN CODE 82041120

| Metric MM | Prices ₹ Per Pc. | Metric MM | Prices ₹ Per Pc. |
|--|------------------|-----------|------------------|
| 24 x 27 | | 33 x 33 | |
| 27 x 27 | | 32 x 32 | |
| 27 x 30 | | 30 x 32 | |
| 27 x 32 | | 30 x 32 | |
| 30 x 30 | | 30 x 33 | |
| 32 x 33 | | 32 x 36 | |
| Spare Tommy Bar (18") 1200 mm : 1120.00 | | | |

Code No. 614
4 WAY WHEEL SPANNER



HSN CODE 82041120

| Size | Prices ₹ Per Pc. |
|----------------|------------------|
| 17, 18, 19, 21 | |
| 17, 19, 21, 23 | |
| 10, 11, 13, 14 | |

Code No. 615
L - SPANNER



HSN CODE 82041120

| Size | Suitable for | Prices ₹ Per Pc. |
|-----------------|--------------|------------------|
| 17 mm | ---- | |
| 18 mm | Indica | |
| 19 mm | Maruti | |
| 20.8 mm (13/16) | Jeep | |

Code No. 616
T - SPANNER



HSN CODE 82041120

| Metric mm | Prices ₹ Ordinary | Prices ₹ Insulated |
|-----------|-------------------|--------------------|
| 8 | | |
| 9 | | |
| 10 | | |
| 11 | | |
| 12 | | |
| 13 | | |
| 14 | | |

Code No. 618
L - HANDLE



Cr-V Steel HSN CODE 82052000

| Size | Prices ₹ Per Pc. |
|-----------|------------------|
| 1/2 x 8" | |
| 1/2 x 10" | |
| 1/2 x 12" | |
| 3/4 x 18" | |
| 3/4 x 20" | |

Code No. 619
EXTENSION BAR



Cr-V Steel HSN CODE 82042000

| Size | Prices ₹ Per Pc. |
|-----------|------------------|
| 3" | |
| 5" | |
| 10" | |
| 3/4 x 8" | |
| 3/4 x 16" | |

Code No. 638
COMBINATION PLIER



Cr-V Steel Taparia Type HSN CODE 82032000

| Size | Prices ₹ Per Pc. |
|------|------------------|
| 8" | |

Code No. 636
SIDE CUTTING PLIER



HSN CODE 82032000

| Size | Prices ₹ Per Pc. |
|------|------------------|
| 6" | |
| 8" | |

Code No. 635
LONG NOSE PLIER



HSN CODE 82032000

| Size | Prices ₹ Per Pc. |
|------|------------------|
| 6" | |
| 8" | |

Code No. 640
CIRCLIP PLIER



HSN CODE 82032000

| Size | Prices ₹ Forged Steel | Prices ₹ Powder Paint |
|------|--------------------------|--------------------------|
| 8" | | |
| 6" | | |
| 7" | | |
| 8" | | |
| 9" | | |
| 10" | | |
| 12" | | |
| 15" | | |
| 18" | | |
| 24" | | |

Code No. 639
SLIP JOINT PLIER



HSN CODE 82032000

| Size | Prices ₹ Per Pc. |
|------|---------------------|
| 6" | |
| 8" | |

Code No. 686
PINCER



HSN CODE 82032000

| Size | Prices ₹ Per Pc. |
|------|---------------------|
| 8" | |

Code No. 637
TOP CUTTER



HSN CODE 82032000

| Size | Prices ₹ Per Pc. |
|--------------|---------------------|
| 6" Insulated | |

Code No. 644
WIRE STRIPPER



HSN CODE 82032000

| Size | Prices ₹ Per Pc. |
|------|---------------------|
| 5" | |

Code No. 687
TOP CUTTER



HSN CODE 82032000

| Size | Prices ₹ Per Pc. |
|------|---------------------|
| 6" | |

Code No. 703
BOLT CUTTER



HSN CODE 82033000

| Size | Prices ₹ Per Pc. |
|------|---------------------|
| 8" | |
| 12" | |
| 14" | |
| 18" | |
| 24" | |
| 36" | |
| 42" | |
| 48" | |

Code No. 646
DESI TIN CUTTER



HSN CODE 82033000

| Size | Prices ₹ Per Pc. |
|------|---------------------|
| 6" | |
| 8" | |
| 10" | |
| 12" | |
| 14" | |
| 16" | |
| 18" | |
| 24" | |
| 36" | |

Code No. 647
TIN CUTTER



Drop Forged HSN CODE 82043000

| Size | Prices ₹ Per Pc. |
|------|---------------------|
| 8" | |
| 10" | |
| 12" | |
| 14" | |



Code No. 641
VICE GRIP PLIER



HSN CODE 82032000

| Size | Prices ₹ Per Pc. |
|------|---------------------|
| 10" | |

Code No. 649
CROSS PEIN HAMMER



Drop Forged With Handle HSN CODE 82052000

| Size in Gms. | Prices ₹ Per Pc. |
|--------------|---------------------|
| 100 | |
| 200 | |
| 300 | |
| 500 | |
| 600 | |
| 800 | |
| 1000 | |

Code No. 650
MACHINIST HAMMER



Drop Forged With Handle HSN CODE 82052000

| Size in Gms. | Prices ₹ Per Pc. |
|--------------|---------------------|
| 100 | |
| 200 | |
| 300 | |
| 500 | |
| 600 | |
| 800 | |
| 900 | |
| 1000 | |
| 1500 | |
| 2000 | |

Code No. 651

CLAW HAMMER TUBULAR



Drop Forged With Handle HSN CODE 82052000

| Size in Gms. | Prices ₹ Per Pc. |
|--------------|------------------|
| 225 | |
| 500 | |

Code No. 652

CLAW HAMMER



Forged Steel HSN CODE 82052000

| Size | Prices ₹ Per Pc. |
|--------|------------------|
| 3/4 LB | 200.00 |
| 1 LB | 220.00 |

Code No. 653

CLAW HAMMER

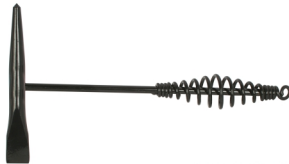


With Steel Pipe Handle HSN CODE 82052000

| Size | Prices ₹ Per Pc. |
|--------|------------------|
| 3/4 LB | |
| 1 LB | |

Code No. 654

CHIPPING HAMMER



HSN CODE 82052000

| Size in Gms. | Prices ₹ Per Pc. |
|--------------|------------------|
| 300 | |
| 500 | |

Code No. 655

SLEDGE HAMMER



HSN CODE 82052000

| Size in Gms. | Prices ₹ Per Kgs. |
|--------------------|-------------------|
| 500 Gms to 15 Kgs. | |

Code No. 655

SLEDGE HAMMER



Drop Forged HSN CODE 82052000

| Size in Lbs. | Prices ₹ Per Pc. |
|--------------|------------------|
| 2 Lb | |
| 3 Lb | |
| 4 Lb | |
| 6 Lb | |
| 8 Lb | |
| 10 Lb | |

Code No. 656

SLEDGE HAMMER

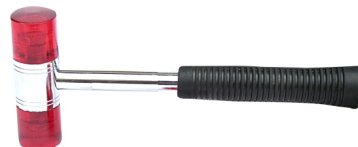


HSN CODE 82052000

| Size in Gms. | Prices ₹ Per Pc. |
|--------------|------------------|
| 1000 | |
| 1500 | |
| 2000 | |
| 2500 | |
| 3000 | |
| 4000 | |
| 5000 | |
| 6000 | |
| 8000 | |
| 10000 | |

Code No. 657

SOFT FACE MALLET HAMMER



HSN CODE 82052000

| Size in Mm | Prices ₹ Per Pc. |
|------------|------------------|
| 20 | |
| 25 | |
| 30 | |
| 40 | |
| 50 | |

Code No. 658

SPARE MALLET



HSN CODE 82052000

| Size in Mm | Prices ₹ Per Pc. |
|------------|------------------|
| 20 | |
| 25 | |
| 30 | |
| 40 | |
| 50 | |

Code No. 699

BRASS HAMMER WITH FIBERGLASS HANDLE



HSN CODE 82052000

| Size | Prices ₹ Per Pc. |
|------------|------------------|
| 500 Gms. | |
| 1000 Gms. | |
| 1500 Gms. | |
| 2000 Gms. | |
| 2500 Gms. | |
| 3000 Gms. | |
| 4000 Gms. | |
| 5000 Gms. | |
| 10000 Gms. | |

Code No. 700

COPPER HAMMER



HSN CODE 82052000

| Size | Prices ₹ Per Pc. |
|-----------|------------------|
| 500 Gms. | |
| 1000 Gms. | |
| 1500 Gms. | |
| 2000 Gms. | |
| 4000 Gms. | |
| 5000 Gms. | |

Code No. 656

SLEDGE HAMMER WITH FIBERGLASS HANDLE



HSN CODE 82052000

| Size in Gms. | Prices ₹ Per Pc. |
|--------------|------------------|
| 1000 | |
| 1500 | |
| 2000 | |
| 2500 | |
| 3000 | |
| 4000 | |
| 5000 | |
| 6000 | |
| 8000 | |
| 10000 | |

Code No. 659

RUBBER MALLET HAMMER



HSN CODE 82052000

| Size | Prices ₹ Per Pc. |
|--------|------------------|
| 1.1/4" | |
| 1.1/2" | |
| 2" | |
| 2.1/2" | |

Code No. 660
PEIN HAMMER



HSN CODE 82052000

| Size in Mm | Prices ₹ Per Pc. |
|------------|------------------|
| 100 Gms. | |

Code No. 629
PIPE WRENCH



Rigid Type HSN CODE 82041220

| Size in Inch | Prices ₹ Per Pc. |
|--------------|------------------|
| 14 | |
| 18 | |
| 24 | |
| 36 | |
| 48 | |

Code No. 630
PIPE WRENCH



Stillson Type D/F Heavy Duty HSN CODE 82041220

| Size in Inch | Prices ₹ Per Pc. |
|--------------|------------------|
| 8 | |
| 10 | |
| 12 | |
| 14 | |
| 18 | |
| 24 | |
| 36 | |
| 48 | |

Code No. 631
ADJUSTABLE WRENCH



Drop Forged HSN CODE 82041220

| Size in Inch | Prices ₹ Per Pc. |
|--------------|------------------|
| 6 | |
| 8 | |
| 10 | |
| 12 | |
| 15 | |
| 18 | |
| 24 | |

Code No. 703
ADJUSTABLE WRENCH WITH PLASTIC GRIP



HSN CODE 82033000

| Size | Prices ₹ Per Pc. |
|------|------------------|
| 8" | |
| 10" | |
| 12" | |

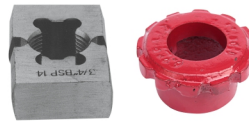
Code No. 673
PIPE DIE SET COMPLETE



HSN CODE 82055990

| Size | Prices ₹ Per Pc. |
|------------|------------------|
| 1/2 - 1" | |
| 1.1/4 - 2" | |
| 2.1/2 - 3" | |
| 3.1/2 - 4" | |
| 4" | |

Code No. 674
SPARE BUSH & DIES IN BSP & BSC



HSN CODE 82055990

| Size | Prices ₹ Bush | Prices ₹ Dies |
|------------|---------------|---------------|
| 1/2 - 1" | | |
| 1.1/4 - 2" | | |
| 2.1/2 - 3" | | |

Code No. 678
CHAIN PIPE WRENCH



Heavy Duty with Kamani Steel Jaws & Drop Forged Rod HSN CODE 82041220

| Size | Prices ₹ Per Pc. |
|------|------------------|
| 2" | |
| 3" | |
| 4" | |
| 6" | |
| 8" | |
| 10" | |
| 12" | |
| 14" | |
| 16" | |
| 18" | |
| 24" | |

Code No. 675
RATCHET PIPE THREADER



HSN CODE 82055990

| Size | Prices ₹ Per Pc. |
|------------|------------------|
| 1/2 - 1" | |
| 1.1/4 - 2" | |
| 2.1/2 - 3" | |
| 4" | |

Code No. 676
SPARE CHASER & COLLET FOR DIE HEAD



HSN CODE 82055990

| Size | Prices ₹ Chaser | Prices ₹ Die Head |
|------------|-----------------|-------------------|
| 1/2 - 1" | | |
| 1.1/4 - 2" | | |
| 2.1/2 - 3" | | |
| 4" | | |

Code No. 679
SPARE CHAIN & PLATES FOR CHAIN WRENCH



HSN CODE 82041220

| Size | Prices ₹ Chain | Prices ₹ Plates |
|------|----------------|-----------------|
| 2" | | |
| 3" | | |
| 4" | | |
| 6" | | |
| 8" | | |
| 10" | | |
| 12" | | |
| 14" | | |

Code No. 694
TAP DRILL



HSN CODE 82051000

| Size | Prices ₹ Per Pc. |
|------|------------------|
| 1/2" | |
| 3/4" | |
| 1" | |

Code No. 703
TUBE CUTTER



HSN CODE 82033000

| Size | Prices ₹ Per Pc. |
|--------------------|------------------|
| 1/8 - 1.1/8 | |
| Spare Wheel (C.S.) | |
| Spare Wheel (HSS) | |

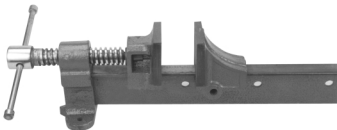
Code No. 703
PIPE CUTTER



HSN CODE 82033000

| Size | Prices ₹ Per Pc. |
|------|------------------|
| 1" | |
| 2" | |
| 3" | |
| 4" | |
| 6" | |

Code No. 667
T-BAR CRAMP



HSN CODE 82057000

| Size | Prices ₹ Per Pc. 2"T | Prices ₹ Per Pc. 2.1/2"T |
|------|----------------------|--------------------------|
| 36" | | |
| 48" | | |
| 60" | | |
| 72" | | |
| 96" | | |

Code No. 704
JACK PLANE WITH BRASS NUT



HSN CODE 82053000

| Size | Prices ₹ Per Pc. |
|-------|------------------|
| No. 4 | |
| No. 5 | |
| No. 6 | |
| No. 7 | |
| No. 8 | |

Code No. 704
SPARE BLADES



HSN CODE 82055990

| Size | Prices ₹ Per Pc. |
|-------|------------------|
| No. 4 | |
| No. 5 | |
| No. 6 | |
| No. 7 | |
| No. 8 | |

Code No. 695
PLUMBOB WITH PLASTIC HEAD



HSN CODE 82055990

| Size | Prices ₹ Per Pc. |
|-------|------------------|
| No. 1 | |
| No. 2 | |
| No. 5 | |

Code No. 704
CARPENTER RATCHET BRACE



HSN CODE 82057000

| Description | Prices ₹ Per Pc. |
|--------------|------------------|
| Stanley Type | 760.00 |
| Ordinary | 460.00 |

Code No. 620
TYRE LEVER



HSN CODE 82055990

| Size | Prices ₹ Per Pc. |
|---------|------------------|
| 1 x 15" | |
| 1 x 18" | |
| 1 x 24" | |

Code No. 621
MULTI PURPOSE TOOL BOX



HSN CODE 82059000

| Size | No. of Trays | Prices ₹ Powder Paint |
|--------------|--------------|-----------------------|
| 16.5 x 8 x 6 | 3 | |
| 16.5 x 8 x 8 | 5 | |
| 21 x 8 x 6 | 3 | |
| 21 x 8 x 8 | 5 | |

Code No. 684
FIRMER CHISEL



HSN CODE 82053000

| Size | Prices ₹ Per Pc. |
|--------|------------------|
| 1" | |
| 1.1/4" | |
| 1.1/2" | |

Code No. 685
MORTISE CHISEL



HSN CODE 82053000

| Size | Prices ₹ Per Pc. |
|--------|------------------|
| 1" | |
| 1.1/4" | |
| 1.1/2" | |

Code No. 622
TROLLEY JACK



HSN CODE 84254200

| Size | Prices ₹ Per Pc. |
|---------|------------------|
| 1.5 Ton | |
| 2 Ton | |
| 2.5 Ton | |
| 3 Ton | |
| 5 Ton | |
| 10 Ton | |

Code No. 626
SCISSOR JACK



HSN CODE 84254200

| Size in Ton | Prices ₹ Per Pc. |
|-------------|------------------|
| 12 PATTI | |
| MARUTI CAR | |
| MARUTI VAN | |
| ZEN | |
| TATA SUMO | |
| TATA INDICA | |

Code No.
CHASIS JACK



HSN CODE 84254200

| Size in inches | Prices ₹ Per Pc. |
|----------------|------------------|
| 24 | |
| 36 | |

Code No. 624
HYDRAULIC J



HSN CODE 84254200

| Size in Ton | Prices ₹ Per Pc. |
|-------------|------------------|
| 8 | |
| 15 | |
| 35 | |
| 50 | |
| 75 | |
| 100 | |

Code No. 628
MECHANICAL JACK



Steel Body Without Rod HSN CODE 84254200

| Metric MM | Prices ₹ Per Pc. |
|-----------|------------------|
| 2 TON | |
| 3 TON | |
| 5 TON | |
| 10 TON | |
| 15 TON | |
| 25 TON | |
| 35 TON | |
| 50 TON | |
| 65 TON | |
| 100 TON | |

Code No. 625
SPARE ROD FOR MECHANICAL JACK



HSN CODE 84254200

| Size in Ton | Prices ₹ Per Pc. |
|-------------|------------------|
| 20MMX36" H | |
| 20MMX48" R | |

Code No. 633
OIL FILTER WRENCH



HSN CODE 82055990

| Size | Prices ₹ Per Pc. |
|--------|------------------|
| 57-73 | |
| 65-83 | |
| 75-95 | |
| 92-111 | |

Code No. 634
FILTER WRENCH DROP FOEGED



With Strap HSN CODE 82055990

| Size | Prices ₹ Per Pc. |
|------|------------------|
| 8" | |

Code No. 688
STRAP WRENCH



HSN CODE 82055990

| Size | Prices ₹ Per Pc. |
|------|------------------|
| 12" | |

Code No. 693
SPEED BRACE SWIVEL HANDLE



HSN CODE 82055990

| Size | Prices ₹ Per Pc. |
|-----------|------------------|
| 1/2"x 250 | |
| 1/2"x 380 | |
| 1/2"x 500 | |

Code No. 692
SPEED BRACE



HSN CODE 82055990

| Size | Prices ₹ Per Pc. |
|----------------|------------------|
| 1/2" Sq. Drive | |

Code No. 696
RAWAL BIT & HOLDER



HSN CODE 82054000

| Size | Prices ₹ Per Pc. |
|--------|------------------|
| No. 8 | |
| No. 10 | |
| No. 12 | |
| No. 14 | |

Code No. 701
ALLEN KEY



HSN CODE 82041120

| Size in mm | Prices ₹ Per Pc. | Size in mm | Prices ₹ Per Pc. |
|------------|------------------|------------|------------------|
| 1.5 | | 18 | |
| 2 | | 19 | |
| 2.5 | | 20 | |
| 3 | | 21 | |
| 4 | | 22 | |
| 5 | | 24 | |
| 6 | | 27 | |
| 7 | | 30 | |
| 8 | | 32 | |
| 9 | | 36 | |
| 10 | | 38 | |
| 11 | | 41 | |
| 12 | | 46 | |
| 13 | | 50 | |
| 14 | | 55 | |
| 16 | | 60 | |
| 17 | | | |

Code No. 698
ALLEN KEY SET



HSN CODE 82041120

| Size | Prices ₹ Per Pc. |
|--------------------------------------|------------------|
| 1.5, 2, 2.5, 3, 4, 5, 6, 7, 8, 9, 10 | |

Code No. 704
BODY FENDER TOOL KIT



HSN CODE 82052000

| Description | Prices ₹ Per Pc. |
|---------------|------------------|
| Set of 8 Pcs | |
| Set of 16 Pcs | |

Code No. 704
PISTON RING COMPRESSOR



HSN CODE 82055990

| Description | Prices ₹ Per Pc. |
|-------------|------------------|
| RC-3 | |
| RC-4 | |
| RC-5 | |

Code No. 704
CLUTCH NUT



HSN CODE 87149990

| Description | Prices ₹ Per Pc. |
|-------------|------------------|
| Pulsar | |
| Star City | |
| Hero Honda | |
| Splendor | |

Code No. 634
FILTER WRENCH CHAIN TYPE



HSN CODE 82055990

| Size | Prices ₹ Per Pc. |
|----------|------------------|
| 60 x 140 | |

Code No. 663
MAGNET PULLER



HSN CODE 82079090

| Size | Prices ₹ Per Pc. |
|------------|------------------|
| Hero Honda | |
| Victor | |
| Pulsar | |
| Eterno | |
| Freedon | |
| Discover | |
| Hunk | |
| Unicorn | |
| Achirver | |
| 10 in 1 | |

Code No. 632
BARREL PUMP



HSN CODE 84139190

| Size | Prices ₹ Per Pc. |
|------|------------------|
| 1" | |

Code No. 689
OIL CAN



HSN CODE 82055190

| Size | Prices ₹ Per Pc. |
|------|------------------|
| 1/4" | |
| 1/2" | |

Code No. 690
GREASE GUN



HSN CODE 82055910

| Size | Prices ₹ Per Pc. |
|-------|------------------|
| 8 Oz | |
| 10 Oz | |
| 15 Oz | |

Code No. 691
GREASE BUCKET



HSN CODE 84131110

| Size | Prices ₹ Per Pc. |
|-------|------------------|
| 8 Oz | |
| 10 Oz | |
| 15 Oz | |

Code No. 668
HACKSAW FRAME



Fixed Poland Type HSN CODE 82029910

| Size | Prices ₹ Per Pc. |
|-------|------------------|
| Heavy | |

Code No. 669
HACKSAW FRAME



Fixed HSN CODE 82029910

| Size | Prices ₹ Per Pc. |
|------|------------------|
| 6 | |

Code No. 670
HACKSAW FRAME



Adjustable Tubular HSN CODE 82029910

| Size | Prices ₹ Per Pc. |
|--------|------------------|
| 10-12" | |

Code No. 671
HACKSAW FRAME



Square Tubular HSN CODE 82029910

| Size | Prices ₹ Per Pc. |
|--------|------------------|
| 10-12" | |

Code No. 672
HACKSAW FRAME



Junior HSN CODE 82029910

| Size | Prices ₹ Per Pc. |
|-------------|------------------|
| 6 mm (C.P.) | |

Code No. 697
HACKSAW BLADE



HSN CODE 82029910

| Size | Prices ₹ Per Pc. |
|-------------|------------------|
| 24 x 18 TPI | |
| 24 x 24 TPI | |
| 12 x 18 TPI | |
| 12 x 24 TPI | |

Code No. 698
JUNIOR HACKSAW BLADE



HSN CODE 82029910

| Size | Prices ₹ Per Pc. |
|-----------|------------------|
| 6 mm x 6" | |

Code No. 663
BAR BENDER TOOL



Drop Forged HSN CODE 82079090

| Size in mm | Prices ₹ Per Pc. |
|------------|------------------|
| 6 | |
| 8 | |
| 10 | |
| 12 | |
| 16 | |
| 20 | |
| 25 | |

Code No. 612
LEATHER TOOL APRON



HSN CODE 82055930

| Metric MM | Prices ₹ Per Pc. |
|-----------|------------------|
| 11 Pocket | |

Code No. 680
ARMATURE BEARING PULLER



HSN CODE 82055990

| Size | Prices ₹ Per Pc. |
|------|------------------|
| | |

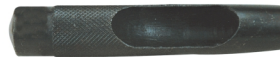
Code No. 648
TOOL POST KEY



HSN CODE 84661010

| Size | Prices ₹ Per Pc. |
|------|------------------|
| 5/16 | |
| 3/8 | |
| 7/16 | |
| 1/2 | |
| 5/8 | |
| 3/4 | |

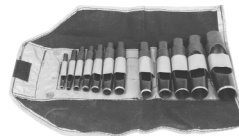
Code No. 665
BELT PUNCH



HSN CODE 82079090

| Size | Prices ₹ Per Pc. | Size | Prices ₹ Per Pc. |
|------|------------------|------|------------------|
| 1 | | 34 | |
| 2 | | 36 | |
| 4 | | 38 | |
| 6 | | 40 | |
| 8 | | 42 | |
| 10 | | 44 | |
| 12 | | 46 | |
| 14 | | 48 | |
| 16 | | 50 | |
| 18 | | 52 | |
| 20 | | 54 | |
| 22 | | 56 | |
| 24 | | 58 | |
| 26 | | 60 | |
| 28 | | 62 | |
| 30 | | 64 | |
| 32 | | | |

Code No. 664
BELT PUNCH KIT



HSN CODE 82059090

| Size | Prices ₹ Per Pc. |
|------|------------------|
| 4-20 | |
| 4-24 | |
| 4-32 | |

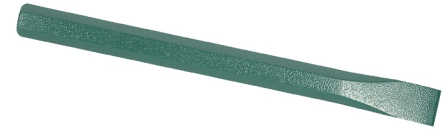
Code No. 704
NAIL PULLER



HSN CODE 82055990

| Description | Prices ₹ Per Pc. |
|-------------|------------------|
| S Type | |

Code No. 662
CHISELS



Octagonal HSN CODE 82053000

| Size | Prices ₹ Per Pc. | Size | Prices ₹ Per Pc. |
|-----------|------------------|-----------|------------------|
| 3/8 x 3" | | 5/8 x 10" | |
| 3/8 x 4" | | 5/8 x 12" | |
| 3/8 x 6" | | 3/4 x 4" | |
| 3/8 x 8" | | 3/4 x 6" | |
| 1/2 x 4" | | 3/4 x 8" | |
| 1/2 x 6" | | 3/4 x 10" | |
| 1/2 x 8" | | 3/4 x 12" | |
| 1/2 x 10" | | 1 x 4" | |
| 1/2 x 12" | | 1 x 6" | |
| 5/8 x 4" | | 1 x 8" | |
| 5/8 x 6" | | 1 x 10" | |
| 5/8 x 8" | | 1 x 12" | |

Code No. 703
CHISEL FLAT - DROP FORGED



HSN CODE 82033000

| Size | Prices ₹ Per Pc. |
|------|------------------|
| 6" | |
| 8" | |
| 10" | |
| 12" | |

Code No. 703
BRICK BLOSTER



HSN CODE 82033000

| Size | Prices ₹ Per Pc. |
|--------|------------------|
| 2.1/4" | |
| 3" | |
| 4" | |

Code No. 684
TAPS & DIES SET

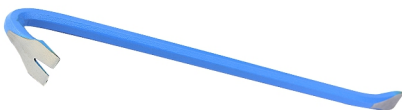


HSN CODE 87089900

| Size | Prices ₹ Per Pc. |
|--|------------------|
| 1/4, 5/16, 3/8, 7/16, 1/2 BSW | |
| 1/4, 5/16, 3/8, 7/16, 1/2 BSF | |
| 1/4, 5/16, 3/8, 7/16, 1/2 UNF | |
| 1/4, 5/16, 3/8, 7/16, 1/2, 5/8, 3/4 BSW | |
| 1/4, 5/16, 3/8, 7/16, 1/2, 5/8, 3/4 BSF | |
| 1/4, 5/16, 3/8, 7/16, 1/2, 5/8, 3/4 UNF | |
| 1/4, 5/16, 3/8, 7/16, 1/2, 5/8, 3/4, 7/8, 1 BSW | |
| 1/4, 5/16, 3/8, 7/16, 1/2, 5/8, 3/4, 7/8, 1 BSF | |
| 1/4, 5/16, 3/8, 7/16, 1/2, 5/8, 3/4, 7/8, 1 UNF | |
| 1/4, 5/16, 3/8, 7/16, 1/2, 5/8, 3/4, 7/8, 1, 1 1/4 BSW | |
| 1/4, 5/16, 3/8, 7/16, 1/2, 5/8, 3/4, 7/8, 1, 1 1/4 BSF | |

| Size | Prices ₹ Per Pc. |
|--|------------------|
| 2, 3, 4, 5, 6 MM (DIN) | |
| 2, 3, 4, 5, 6, 7, 8, 9, 10 MM (S.I.) | |
| 3, 4, 5, 6, 7, 8, 10, 12 MM (S.I.) | |
| 6, 7, 8, 10, 12 MM (S.I.) | |
| 6, 8, 10, 12, 14, 16, 18 MM (S.I.) | |
| 6, 8, 10, 12, 14, 16, 18, 20 MM (S.I.) | |
| 6, 8, 10, 12, 14, 16, 18, 20, 22, 24 MM (S.I.) | |
| 0, 1, 2, 3, 4, 5, 6, 7, 8, 9, 10 MM (B.A.) | |
| 1/8, 1/4, 3/8, 1/2, 3/4, 1 BSP | |
| 1/8, 1/4, 3/8, 1/2, 3/4, 1, 1 1/4 BSP | |
| 1/8, 1/4, 3/8, 1/2, 3/4, 1, 1 1/4 NPT | |
| 1/8, 1/4, 3/8, 1/2, 3/4, 1, 1 1/4 NPT | |
| 1/8, 1/4, 3/8, 1/2, 3/4, 1, 1 1/4 NPT | |

Code No. 666
WRECKING BAR



HSN CODE 82057000

| Size | Prices ₹ Per Pc. |
|----------|------------------|
| 25 x 18" | |
| 28 x 18" | |
| 30 x 18" | |
| 25 x 24" | |
| 28 x 24" | |
| 30 x 24" | |

Code No. 666
DRILL CHUCK WITH KEY



HSN CODE 82057000

| Size | Prices ₹ Per Pc. |
|------|------------------|
| 1/2" | |
| 3/4" | |

Code No. 663
CENTER PUNCH



HSN CODE 82079090

| Size | Prices ₹ Per Pc. |
|----------|------------------|
| 3/8 x 4" | |
| 3/8 x 5" | |
| 3/8 x 6" | |
| 1/2 x 4" | |
| 1/2 x 5" | |
| 1/2 x 6" | |
| 1/2 x 8" | |

Code No. 703
SCREWDRIVER - FLAT TIP & PHILIPS



HSN CODE 82033000

| Size | Prices ₹ Per Pc. Flat Tip | Prices ₹ Per Pc. Philips |
|----------|---------------------------|--------------------------|
| 3 x 65 | | |
| 3 x 100 | | |
| 3 x 150 | | |
| 4 x 100 | | |
| 4 x 150 | | |
| 4 x 200 | | |
| 5 x 100 | | |
| 5 x 150 | | |
| 5 x 200 | | |
| 5 x 250 | | |
| 5 x 300 | | |
| 6 x 100 | | |
| 6 x 150 | | |
| 6 x 200 | | |
| 6 x 250 | | |
| 6 x 300 | | |
| 8 x 150 | | |
| 8 x 200 | | |
| 8 x 250 | | |
| 8 x 300 | | |
| 10 x 200 | | |
| 10 x 250 | | |
| 10 x 300 | | |
| 10 x 400 | | |
| 10 x 450 | | |

Code No. 703
NEON TESTER



HSN CODE 82033000

| Size | Prices ₹ Per Pc. |
|----------|------------------|
| Standard | |

Code No. 703
SCREWDRIVER 2 IN 1



HSN CODE 82033000

| Size | Prices ₹ Per Pc. |
|---------|------------------|
| 6 x 100 | |
| 6 x 150 | |
| 6 x 200 | |
| 6 x 250 | |

Code No. 703
NUT DRIVER



HSN CODE 82033000

| Size | Prices ₹ Per Pc. |
|---------|------------------|
| 6 x 75 | |
| 6 x 100 | |
| 6 x 125 | |
| 6 x 150 | |
| 6 x 175 | |
| 6 x 200 | |

Code No. 703
SCREWDRIVER KIT - SET OF 8 PCS.



HSN CODE 82033000

| Size | Prices ₹ Per Pc. |
|----------|------------------|
| Standard | |

Warranty

We therefore undertake to replace any piece of **HUGO** Tools & Vices in case of any Manufacturing Defect provided the same is returned to us without misuse and careless handling.

Authorized Stockist