



MACHINE TOOL ACCESSORIES



PRICE LIST

EFFECTIVE FROM DATE : 01/01/2022

FOR THE PEOPLE WHO CARE ABOUT QUALITY

REVOLVING CENTER

M.T. No.	STANDARD MALE POINT	FEMALE POINT	EXTRA HEAVY DUTY FOUR BEARING	SUPER EXTRA HEAVY DUTY
MT-1	1900	2200	—	—
MT-2	1900	2200	—	—
MT-3	1850	2150	3600	—
MT-4	2090	2500	3800	7000
MT-5	3880	4600	7200	11100
MT-6	15980	17000	18200	

REVOLVING CENTER (CARBIDE TIPPED)

M.T. No.	CARBIDE TIP DIAMETER	STANDARD CARBIDE	EXTRA HEAVY DUTY FOUR BEARING(C.T.)
MT-1	5 MM	2800	—
MT-2	8 MM	2800	—
MT-3	11 MM	2700	5100
MT-4	14 MM	3700	6100
MT-5	18 MM	5800	9100
MT-6	18 MM	18100	22400

SPARE POINT

M.T. No.	STANDARD MALE POINT	FEMALE POINT	EXTRA HEAVY DUTY FOUR BEARING	CARBIDE TIP DIAMETER	STANDARD CARBIDE	EXTRA HEAVY DUTY CARBIDE
MT-1	350	380	—	5 MM	1250	—
MT-2	350	380	—	8 MM	1250	—
MT-3	310	360	1100	11 MM	1200	2200
MT-4	400	430	1200	14 MM	1550	2400
MT-5	520	600	2100	18 MM	2900	4000
MT-6	1580	1600	4000	18 MM	5300	6200

SPARE POINT SPECIAL FEMALE CNC H/D R MODEL INTERCHANGEABLE POINT

FEMALE SIZE	MT SIZE	PRICE
6,8,10,12,14,16,18 MM	MT-4	550

WEDGE

SIZE	PRICE	SIZE	PRICE
MT-3, MT-4	260	MT-5	350



STUB POINT



INTERCHANGEABLE PROFILED



INTERCHANGEABLE EXTENDED



INTERCHANGEABLE STUB POINT

**REVOLVING CENTER
CNC HEAVY DUTY R MODEL**

M.T. No.	STUB	EXTENDED	PROFILED	STUB CARBIDE	EXTENDED CARBIDE	PROFILED CARBIDE
MT-3	5600	5600	5600	7350	7350	7350
MT-4	5900	5900	5900	7600	7600	7600
MT-5	9450	9450	9450	11600	11600	11600

**REVOLVING CENTER
CNC H/D R MODEL WITH INTERCHANGEABLE POINT**

M.T. No.	STUB	EXTENDED	PROFILED	STUB CARBIDE	EXTENDED CARBIDE	PROFILED CARBIDE
MT-3	6200	6200	6200	7950	7950	7950
MT-4	6500	6500	6500	8250	8250	8250
MT-5	10500	10500	10500	12200	12200	12200

**SPARE POINT
CNC HEAVY DUTY R MODEL**

M.T. No.	STUB	EXTENDED	PROFILED	STUB CARBIDE	EXTENDED CARBIDE
MT-3	800	800	800	1650	1650
MT-4	950	950	950	1800	1800
MT-5	1300	1300	1300	3000	3000

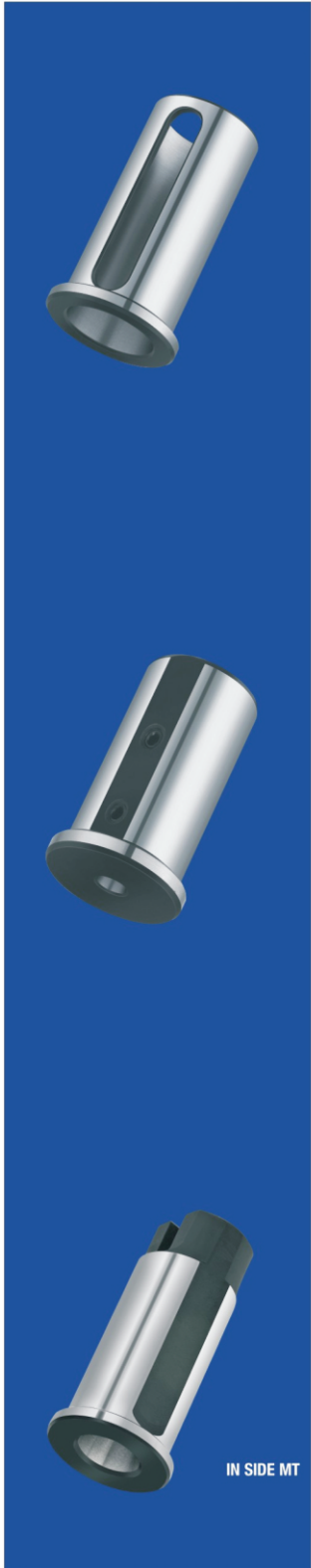
**SPARE POINT
CNC H/D R MODEL INTERCHANGEABLE POINT**

M.T. No.	STUB	EXTENDED	PROFILED	STUB CARBIDE	EXTENDED CARBIDE
MT-3	430	430	430	1300	1300
MT-4	470	470	470	1600	1600
MT-5	750	750	750	2850	2850

**SPARE POINT SPECIAL BLUNT CNC
H/D R MODEL INTERCHANGEABLE POINT**

BLUNT SIZE	MT-3	MT-4	MT-5
20-40	1450	1450	1800
40-60	1650	1650	2000
60-80	1950	1950	2400
80-100	—	2400	3100
100-125	—	—	4400

TURRET SLEEVE UNIVERSAL (WITH COLLAR)



SIZE	PRICE	SIZE	PRICE
OD20 X ID6 X 55L	500	OD40 X ID6 X 65L	650
OD20 X ID8 X 55L	500	OD40 X ID8 X 85L	650
OD20 X ID10 X 55L	500	OD40 X ID10 X 85L	650
OD20 X ID12 X 55L	500	OD40 X ID12 X 85L	650
OD20 X ID14 X 55L	500	OD40 X ID14 X 85L	650
OD20 X ID16 X 55L	500	OD40 X ID16 X 90L	650
20 X MT-1	500	OD40 X ID18 X 90L	650
OD25 X ID6 X 55L	500	OD40 X ID20 X 90L	650
OD25 X ID8 X 55L	500	OD40 X ID25 X 90L	650
OD25 X ID10 X 55L	500	OD40 X ID32 X 90L	650
OD25 X ID12 X 55L	500	40 X MT-1	650
OD25 X ID14 X 55L	500	40 X MT-2	650
OD25 X ID16 X 55L	500	40 X MT-3	650
OD25 X ID18 X 55L	500	40 X MT-4	650
OD25 X ID20 X 55L	500	OD50 X ID8 X 100L	1580
25 X MT-1, 25 X MT-2	500	OD50 X ID10 X 100L	1580
OD32 X ID6 X 65L	550	OD50 X ID12 X 100L	1580
OD32 X ID8 X 65L	550	OD50 X ID14 X 100L	1580
OD32 X ID10 X 65L	550	OD50 X ID16 X 100L	1580
OD32 X ID12 X 65L	550	OD50 X ID18 X 100L	1580
OD32 X ID14 X 65L	550	OD50 X ID20 X 100L	1580
OD32 X ID16 X 65L	550	OD50 X ID25 X 100L	1580
OD32 X ID18 X 65L	550	OD50 X ID32 X 100L	1580
OD32 X ID20 X 65L	550	OD50 X ID40 X 100L	1580
OD32 X ID25 X 65L	550	50 X MT-1	1580
32 X MT-1	550	50 X MT-2	1580
32 X MT-2	550	50 X MT-3	1580
32 X MT-3	550	50 X MT-4	1580
OD60 X 110L X ID : 16, 20, 25, 32, 40, 50			2000

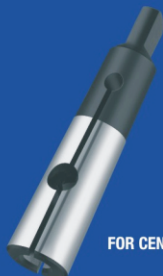


PIPE CENTER						
CAPACITY		MT - 2	MT - 3	MT - 4	MT - 5	MT - 6
BLUNT	POINTED					
25-50	—	2350	2350	2650	3350	—
—	0-2"	2400	2400	2700	3400	—
30-65	—	2630	2630	2930	3700	—
—	0-2" 1/2"	2700	2700	3000	3800	—
40-75	—	2800	2800	3150	4000	—
—	0-3"	2900	2900	3250	4100	—
50-90	—	—	3250	3550	4400	8600
—	0-3" 1/2"	—	3350	3650	4500	8800
65-100	—	—	3700	4000	5500	9800
—	0-4"	—	3800	4100	5650	10000
75-125	—	—	6500	6900	8600	11100
35-125	—	—	7600	7950	9950	13500
—	0-5"	—	8300	8650	10900	15600
75-150	—	—	9300	9500	10700	15800
100-175	—	—	—	16300	17000	20800
100-200	—	—	—	20600	21650	26300
100-230	—	—	—	26500	27000	30900
200-275	—	—	—	—	70500	71000

DRILL CHUCK ARBOUR		
M.T. No.	SIZE	PRICE
MT-1	JT-1(1/4"), JT-2 (3/8") JT-6 (1/2")	160
MT-2	JT-1(1/4"), JT-2 (3/8") JT-6 (1/2")	160
MT-2	JT-3 (3/4")	265
MT-3	JT-2(3/8"), JT-6 (1/2") JT-3 (3/4")	190
MT-4	JT-6 (1/2") JT-3 (3/4")	550
MT-5	JT-6 (1/2") JT-3 (3/4")	1080



FOR TAPS & DRILLS



FOR CENTER DRILLS

QUICK CHANGE CHUCK

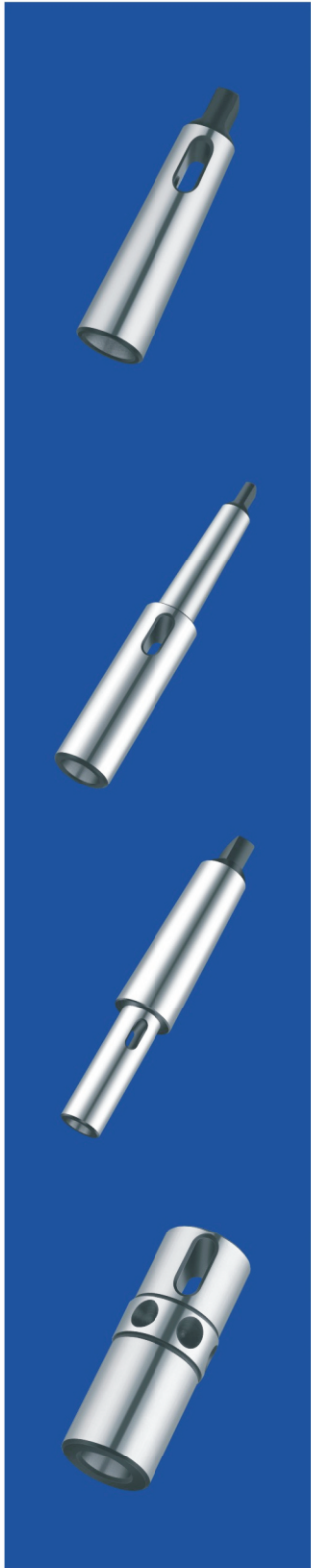
M.T. No.	MT-2	MT-3	MT-4	MT-5
PRICE	1900	2300	3700	5650

QUICK CHANGE CHUCK COLLET

SIZE					PRICE
CO-21	CO-22	—	—	—	630
CO-31	CO-32	CO-33	—	—	690
CO-41	CO-42	CO-43	CO-44	—	1000
CO-51	CO-52	CO-53	CO-54	CO-55	2150

SPLIT SLEEVE

M.T. No.	SIZE		PRICE
MT-1	TAP SIZE	M-3, M-4, M-5, M-6, M-7, M-8, M-10, M-12 3/16", 1/4", 5/16", 3/8", 7/16", 1/2"(BSW/UNC)	410
MT-1	DRILL SIZE	1.5 MM TO 8.5 MM, 1/8" TO 21/64"	560
MT-1	CENTER DRILL	BS-1, BS-2, BS-3, BS-4	560
MT-2	TAP SIZE	M-4, M-5, M-6, M-7, M-8, M-10, M-12, M-14, M-16, M-18, M-20 3/16", 1/4", 5/16", 3/8", 7/16", 1/2", 5/8", 3/4"(BSW/UNC)	420
MT-2	BSP TAP	1/8", 1/4", 3/8"	570
MT-2	DRILL SIZE	4 MM TO 14 MM, 3/16" TO 35/64"	570
MT-2	CENTER DRILL	BS-2, BS-3, BS-4, BS-5	570
MT-3	TAP SIZE	M-8, M-10, M-12, M-14, M-16, M-18, M-20, M-22, M-24 5/16", 3/8", 7/16", 1/2", 5/8", 3/4", 7/8", 1"	640
MT-3	BSP TAP	1/8", 1/4", 3/8", 1/2",	800
MT-3	DRILL SIZE	8 MM TO 16 MM, 3/8" TO 5/8"	800
MT-3	CENTER DRILL	BS-4, BS-5, BS-6	800
MT-4	TAP SIZE	M-12, M-14, M-16, M-18, M-20, M-22, M-24, M-27, M-30, M-33 (BSP 1/2", 3/4")	1380
MT-5	TAP SIZE	M-24, M-27, M-30, M-33, M-36, M-42, M-45 (BSP 1/2", 3/4", 1", 1 1/4")	2100



DRILL SLEEVE

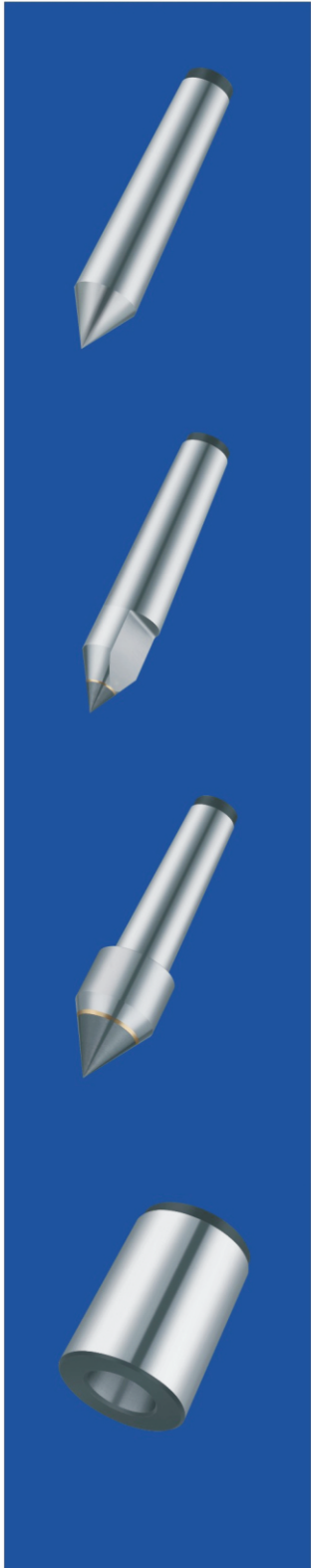
M.T. No.	PRICE	M.T. No.	PRICE
0-1	500	1-5	1050
1-2	275	1-6	4100
2-3	295	2-4	500
3-4	425	2-5	930
4-5	900	2-6	4100
5-6	3050	3-5	900
1-3	350	3-6	3600
1-4	540	4-6	3400

EXTENSION SOCKET

M.T. No.	PRICE	M.T. No.	PRICE
1-1	850	4-1	1520
1-2	1000	4-2	1550
2-1	1140	4-3	1550
2-2	1160	4-4	2150
2-3	1300	4-5	3050
3-1	1180	5-1	1950
3-2	1380	5-2	2350
3-3	1410	5-3	2550
3-4	1750	5-4	2750
—	—	5-5	3400

FLOATING REAMER HOLDER

SIZE					PRICE
FR-21	FR-22	—	—	—	950
FR-31	FR-32	FR-33	—	—	1100
FR-41	FR-42	FR-43	FR-44	—	1450
FR-51	FR-52	FR-53	FR-54	FR-55	2800



DEAD CENTER

M.T. No.	PLAIN DEAD (FULL)	HALF DEAD	FEMALE DEAD	CARBIDE TIP DIAMETER	CARBIDE TIPPED FULL	CARBIDE TIPPED HALF
MT-1	280	400	380	5 MM	760	910
MT-2	280	400	380	8 MM	800	920
MT-3	280	400	380	11 MM	1040	1350
MT-4	435	600	570	14 MM	1650	2100
MT-5	1120	1500	1450	18 MM	3400	3950
MT-6	3250	4600	4100	18 MM	6400	7700

DEAD CENTER (CARBIDE TIPPED SPECIAL)

TIP DIAMETER	MT - 2	MT - 3	MT - 4	MT - 5
11 MM	1450	—	—	—
14 MM	2150	2150	—	—
18 MM	3000	3000	3550	—
22 MM	5750	5750	5950	7000
25 MM	6850	6850	7150	8400
28 MM	8350	8350	8400	9800
32 MM	—	9800	10100	11550
35 MM	—	11700	12200	13100

LATHE SLEEVE

M.T. No.	SIZE	PRICE
MT-3-5	STANDARD : 4' LATHE	580
MT-4-6	FOR HEAVY DUTY LATHE	730

MORSE TAPER COLLET CHUCK

MT-2 X ER-32	1600	MT-2 X ER-40 / E-40	2000
MT-3 X ER-32	1600	MT-3 X ER-40 / E-40	2000
MT-4 X ER-32	1600	MT-4 X ER-40 / E-40	2000



COLLET CHUCK

SIZE	PRICE	SIZE	PRICE
BT-40 ER- 16 X 70	1700	BT-40 ER- 32 X 200	3400
BT-40 ER- 16 X 100	1900	BT-40 ER- 32 X 250	4300
BT-40 ER- 16 X 130	2200	BT-40 ER- 32 X 300	5200
BT-40 ER- 16 X 160	2500	BT-40 ER- 40 X 70	1950
BT-40 ER- 16 X 200	3350	BT-40 ER- 40 X 100	2150
BT-40 ER- 16 X 250	4300	BT-40 ER- 40 X 130	2450
BT-40 ER- 16 X 300	5200	BT-40 ER- 40 X 160	2750
BT-40 ER- 20 X 70	1700	BT-40 ER- 40 X 200	3600
BT-40 ER- 20 X 100	1900	BT-40 ER- 40 X 250	4300
BT-40 ER- 20 X 130	2200	BT-40 ER- 40 X 300	5200
BT-40 ER- 20 X 160	2500	BT-50 ER- 25 X 80	3900
BT-40 ER- 20 X 200	3350	BT-50 ER- 25 X 100	4250
BT-40 ER- 20 X 250	4300	BT-50 ER- 25 X 130	4750
BT-40 ER- 20 X 300	5200	BT-50 ER- 25 X 160	5350
BT-40 ER- 25 X 70	1750	BT-50 ER- 25 X 200	6200
BT-40 ER- 25 X 100	1950	BT-50 ER- 32 X 80	3900
BT-40 ER- 25 X 130	2250	BT-50 ER- 32 X 100	4250
BT-40 ER- 25 X 160	2550	BT-50 ER- 32 X 130	4750
BT-40 ER- 25 X 200	3400	BT-50 ER- 32 X 160	5350
BT-40 ER- 25 X 250	4300	BT-50 ER- 32 X 200	6200
BT-40 ER- 25 X 300	5200	BT-50 ER- 40 X 80	4000
BT-40 ER- 32 X 70	1750	BT-50 ER- 40 X 100	4350
BT-40 ER- 32 X 100	1950	BT-50 ER- 40 X 130	4850
BT-40 ER- 32 X 130	2250	BT-50 ER- 40 X 160	5450
BT-40 ER- 32 X 160	2550	BT-50 ER- 40 X 200	6300

MILLING REDUCTION SOCKET

SIZE	PRICE	SIZE	PRICE
BT-40 MT- 1 X 50	1650	BT-50 MT- 2 X 50	3550
BT-40 MT- 2 X 50	1650	BT-50 MT- 3 X 60	3750
BT-40 MT- 3 X 75	1800	BT-50 MT- 4 X 90	4250
BT-40 MT- 4 X 95	2100	BT-50 MT- 5 X 115	5000
BT-40 MT- 1 X 120	2450	BT-50 MT- 1 X 120	4900
BT-40 MT- 2 X 120	2450	BT-50 MT- 2 X 135	4900
BT-40 MT- 3 X 145	2700	BT-50 MT- 3 X 150	5400
BT-40 MT- 4 X 170	3100	BT-50 MT- 4 X 180	6000
BT-50 MT- 1 X 50	3550	BT-50 MT- 5 X 220	7000

STUB MILLING ARBOUR

SIZE	PRICE	SIZE	PRICE
BT-40 16 X 50, 22 X 50	1750	BT-50 16 X 60, 22 X 60	4100
BT-40 16 X 100, 22 X 100	2150	BT-50 16 X 100, 22 X 100	4700
BT-40 16 X 160, 22 X 160	2800	BT-50 16 X 160, 22 X 160	5750
BT-40 16 X 200, 22 X 200	3600	BT-50 16 X 200, 22 X 200	6800
BT-40 27 X 50	1800	BT-50 27 X 60	4100
BT-40 27 X 100	2200	BT-50 27 X 100	4700
BT-40 27 X 160	2850	BT-50 27 X 160	5750
BT-40 27 X 200	3650	BT-50 27 X 200	6800
BT-40 32 X 60	2000	BT-50 32 X 70	4400
BT-40 32 X 100	2350	BT-50 32 X 100	4900
BT-40 32 X 160	2950	BT-50 32 X 160	6000
BT-40 32 X 200	4300	BT-50 32 X 200	7100
BT-40 40 X 60	2350	BT-50 40 X 70	4550
BT-40 40 X 100	2600	BT-50 40 X 100	5100
BT-40 40 X 160	3500	BT-50 40 X 160	6200
BT-40 40 X 200	4500	BT-50 40 X 200	7400

SIDE LOCK HOLDER

SIZE	PRICE	SIZE	PRICE
BT-40 10, 12, 16MM	1700	BT-50 10, 12, 14, 16, 18MM	3900
BT-40 20, 25MM (SLIMLINE)	1900	BT-50 20, 25MM	4300
BT-40 32MM (SLIMLINE)	1950	BT-50 32, 40MM	4500
BT-40 40MM (SLIMLINE)	2100	BT-50 50MM	5200

SPARES

SIZE	PRICE	SIZE	PRICE
NUT ER-16	220	NUT ER-25	300
NUT ER-16 M TYPE	220	NUT ER-32	340
NUT ER-20	240	NUT ER-40	450
NUT ER-20 M TYPE	240	NUT E-40	420

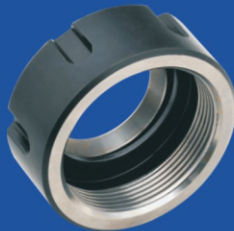
EDGE FINDER 4 & 10 MECHANICAL

270

LOCKING DEVICE

LOCKING DEVICE BT - 40

2300





CYLINDRICAL SHANK COLLET CHUCK

SIZE	PRICE	SIZE	PRICE
CSCC Ø 16 X 60LX ER-16	900	CSCC Ø 32 X 65LX ER-32	1200
CSCC Ø 16 X 60LX ER-20	900	CSCC Ø 32 X 65LX ER-40	1700
CSCC Ø 20 X 60LX ER-20	900	CSCC Ø 40 X 85LX ER-25	1350
CSCC Ø 20 X 60LX ER-25	1000	CSCC Ø 40 X 85LX ER-32	1350
CSCC Ø 25 X 60LX ER-20	900	CSCC Ø 40 X 85LX ER-40	1800
CSCC Ø 25 X 60LX ER-25	1000	CSCC Ø 20 X 100LX ER-16 M TYPE	900
CSCC Ø 25 X 60LX ER-32	1250	CSCC Ø 20 X 150LX ER-16 M TYPE	1050
CSCC Ø 32 X 65LX ER-25	1100	CSCC Ø 20 X 200LX ER-16 M TYPE	1350

SPANNER

SIZE	PRICE
ER-16 MULTI HOOK	220
ER-20 MULTI HOOK	220
ER-25 MULTI HOOK	250
ER-32 MULTI HOOK	300
ER-40 MULTI HOOK	350
ER-25 'C' HOOK	200
ER-32 'C' HOOK	220
ER-40 'C' HOOK	230
—	—

PULL STUD

SIZE	PRICE
BT-40 45°	140
BT-40 45° (THROUGH COOLANT HOLE)	155
BT-40 60°	155
BT-40 60° (THROUGH COOLANT HOLE)	170
BT-40 90°	155
BT-40 90° (THROUGH COOLANT HOLE)	170
BT-50 45°	350
BT-50 45° (THROUGH COOLANT HOLE)	370
SK-40	180

ISO COLLET CHUCK

SIZE	PRICE
ISO-40 E-40 COLLET ADAPTOR	1850
ISO-40 ER-32 X 50	1900
ISO-40 ER-40 X 55	2000

ISO MILLING REDUCTION SOCKET

SIZE	PRICE
ISO-40 MT-1, MT-2	1700
ISO-40 MT-3	1900
ISO-40 MT-4	2200

ISO SIDE LOCK HOLDER

SIZE	PRICE
ISO-40 16, 20MM	2100
ISO-40 25, 32MM	2200
ISO-40 40 MM	2500

ISO STUB MILLING ARBOUR

SIZE	PRICE
ISO-40 16, 22, 27MM	1900
ISO-40 32 MM	2100
ISO-40 40 MM	2250



MACHINE TOOL ACCESSORIES



Manufactured By:

ULTRA TOOLS INDUSTRY Pvt. Ltd.

Rajkot (Gujarat) INDIA.