

# BAKER

*....a passion for precision*

---

## PRICE LIST

### EFFECTIVE 01-04-2023

---

## BAKER GAUGES INDIA PRIVATE LIMITED



### BMI DIVISION

#### CORPORATE OFFICE & FACTORY

33 - 1 - 2, NAGAR ROAD,  
PUNE - 411 014. INDIA.



### HIP DIVISION

#### HEAD OFFICE & FACTORY

37 - 40, NAGAR ROAD,

AN ISO 9001:2015 CERTIFIED COMPANY

# BAKER GAUGES INDIA PRIVATE LIMITED

CORPORATE OFFICE & FACTORY

BMI DIVISION

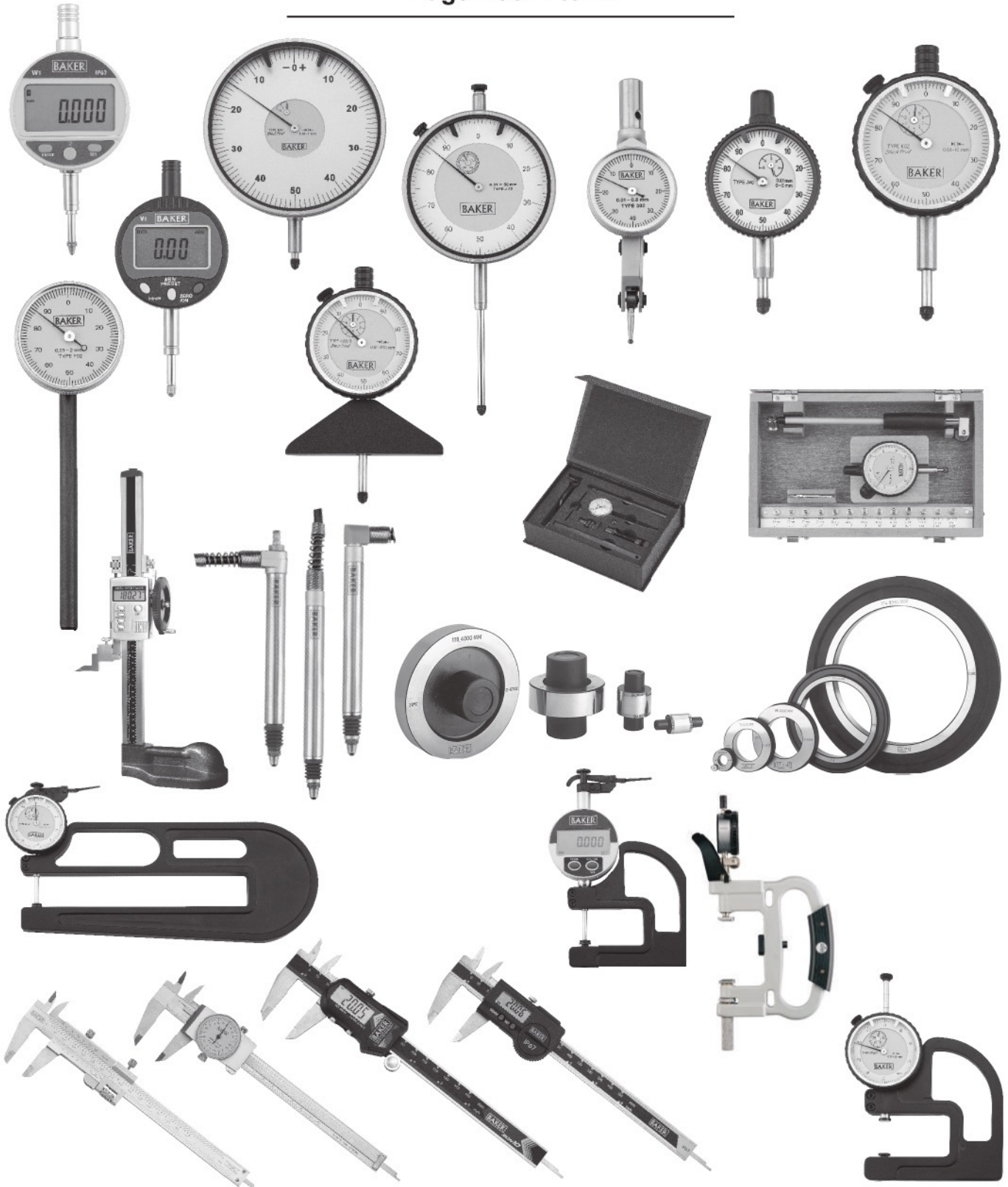


# BAKER

*...a passion for precision*

## BAKER BMI DIVISION PRICE LIST

Page Nos. 1 to 42





DESCRIPTION	PAGE NO.
Plunger Type Dial Gauges	3
New IP67 Digital Dial Gauges (Plunger Type)	4
Valueline Digital Dial Gauges (Plunger Type)	4 - 5
Tyre Tread Depth Gauges	5
Crankshaft Gauges	5
Precision Measuring Instruments Set	5
Hardness Tester Dial Gauges	5
Comparator Stand	5
Magnetic Stand	6
Universal Magnetic Stand	6
Check Master	6
Std. Anvil Set for ID and OD measurement	6
Micrometer Stand	6
Dial Snap Gauges	6
Lever Type Dial Gauges	6 - 7
Back Plunger Dial Gauges	7
Universal Test Sets	7
Dial Bore Gauges	7 - 8
Dial Bore Gauges (Old Design - Shallow Type)	8
Bore Gauge Assembly (without Dial Gauge)	8 - 9
Digital Dial Bore Gauge	9
Dial Depth Gauges	9
Digital Dial Depth Gauges	10
Dial Thickness Gauges	10
Digital Dial Thickness Gauges	10
Dial Gauges and Instruments Accessories	11
Internal Groove Caliper Accessories	12
Height Gauge Accessories	12
Surface Roughness Tester Accessories	12
Dial Gauge Spares	13 - 25
Digital Calipers	26
Digital Depth Calipers	27
Dial Calipers	27
Vernier Calipers	27
Digital Height Gauges	28
Vernier Height Gauges	28
Double Column Digital Height Gauge	28
Surface Roughness Tester SRT100	28
Universal Bevel Protractor	28
Precision Spirit Level	28
Slip Gauges - Steel and Carbide	28
Electronic Probes	29
Master Setting Rings	30
Carbide Master Setting Rings	31
Master Setting Discs	31
Terms & Conditions (for products)	31
Calibration Charges For Master Setting Rings	32
Calibration Charges For Master Setting Discs / Plain Plug Gauges	32
Calibration Charges For Plain Taper Gauges (Male / Female)	32
Calibration Charges For Roundness Measurement (Internal & External Diameter)	33
Calibration Charges For Roundness Masters	33
Calibration Charges For Surface Finish Measurement / Roughness Masters	33
Calibration Charges For Dial Gauges	33
Calibration Charges For Electronic Products	33
Calibration Charges For Digital Dial Gauges	33
Calibration Charges For Digital Calipers / Dial Calipers / Vernier Calipers	33
Calibration Charges For Height Gauges	34
Calibration Charges For Three Point Micrometers	34
Calibration Charges For Slip Gauges	34
Terms & Conditions (for services)	34
Calibration Services	35
NABL Certificate of Accreditation	36
NABL Scope of Accreditation	37 - 41

**PLUNGER TYPE DIAL GAUGES (MODEL 40)**

PRODUCT CODE	TYPE	READING	RANGE	GRADUATION	UNIT RATE ₹
D01469000	K39	0.01 mm	5.0 mm	0-50-0	2,420.00
D01459000	K40	0.01 mm	5.0 mm	0-100	2,420.00
D06259000	K35	0.1 mm	10 mm	0-10	2,790.00
D01349000	K40Z	0.01 mm	0.8 mm	0-40-0	2,670.00
D01319000	K36	0.01 mm	5.0 mm	0-50	2,910.00
D11139000	K41	0.001 inch	0.25 inch	0-50-0	2,660.00
D11129000	K42	0.001 inch	0.25 inch	0-100	2,660.00
D05519000	K43	0.0005 inch	0.25 inch	0-50	2,920.00

**PLUNGER TYPE DIAL GAUGES (MODEL 56)**

PRODUCT CODE	TYPE	READING	RANGE	GRADUATION	UNIT RATE ₹
D01399000	KZ	0.01 mm	0.8 mm	40-0-40	1,680.00
D01359000	KO1	0.01 mm	10.0 mm	0-50-0	1,550.00
D01099000	KO2	0.01 mm	10.0 mm	0-100	1,550.00
D01369000	KO3	0.01 mm	5.0 mm	0-50-0	1,610.00
D01379000	KO4	0.01 mm	5.0 mm	0-100	1,610.00
D06119000	KO5	0.1 mm	10.0 mm	0-10	1,520.00
D06159000	KO6A	0.1 mm	25.0 mm	0-10	2,130.00
D01479000	KO8A	0.01 mm	25.0 mm	0-100	2,110.00
D01429000	KO7	0.01 mm	30.0 mm	0-100	3,380.00
D23129000	KO9	0.002 mm	2.0 mm	0-10-0	3,380.00
D23139000	K10	0.002 mm	2.0 mm	0-20	3,380.00
D23149000	K11	0.002 mm	5.0 mm	0-10-0	4,030.00
D23119000	K12	0.002 mm	5.0 mm	0-20	2,850.00
D23309000	K13A	0.002 mm	12.0 mm	0-10-0	6,530.00
D23319000	K14A	0.002 mm	12.0 mm	0-20	6,530.00
D28089000	K17S	0.001 mm	1.0 mm	0-100-0	3,280.00
D01279000	K20	0.010 mm	50.0 mm	0-100	5,570.00
D11119000	KY	0.001 inch	0.08 inch	40-0-40	1,850.00
D11099000	K51	0.001 inch	0.5 inch	0-50-0	2,230.00
D11109000	K52	0.001 inch	0.5 inch	0-100	2,230.00
D11089000	K50	0.001 inch	1.0 inch	0-100	2,930.00
D16059000	K53	0.0005 inch	0.5 inch	0-25-0	2,730.00
D16069000	K54	0.0005 inch	0.5 inch	0-50	2,730.00
D25099000	K61	0.0001 inch	0.2 inch	0-50-0	4,900.00
D25109000	K62	0.0001 inch	0.2 inch	0-100	4,900.00
D25159000	K63A	0.0001 inch	0.5 inch	0-50-0	7,900.00
D25169000	K64A	0.0001 inch	0.5 inch	0-100	7,900.00
D11179000	K21	0.001 inch	2.0 inch	0-100	5,570.00

**PLUNGER TYPE DIAL GAUGES (MODEL 88)**

PRODUCT CODE	TYPE	READING	RANGE	GRADUATION	UNIT RATE ₹
D01269000	K72	0.01 mm	50.0 mm	0-100	7,480.00
D11149000	K76	0.001 inch	2.0 inch	0-100	7,910.00

**PLUNGER TYPE DIAL GAUGES (0-100mm)**

PRODUCT CODE	TYPE	READING	RANGE	GRADUATION	UNIT RATE ₹
D05509000	K100	0.01 mm	100 mm	0-100	22,930.00

**PLUNGER TYPE DIAL GAUGES (MODEL 105)**

PRODUCT CODE	TYPE	READING	RANGE	GRADUATION	UNIT RATE ₹
D01409000	K101	0.01 mm	2.0 mm	0-50-0	7,090.00

# DIAL GAUGES & INSTRUMENTS



## NEW IP67 DIGITAL DIAL GAUGES (PLUNGER TYPE)

PRODUCT CODE	DESCRIPTION	UNIT RATE ₹
E61089000	BAKER Water Resistant Digital Dial Gauge, <b>Type W1</b> with metric & inch capability & RS232 data output, conforming to IP67. Reading : 0.001 mm / 0.00005 inch Range : 12.5 mm / 0.5 inch	20,640.00
E61099000	BAKER Water Resistant Digital Dial Gauge, <b>Type W2</b> with metric & inch capability & RS232 data output, conforming to IP67. Reading : 0.001 mm / 0.00005 inch Range : 25 mm / 1.0 inch	21,680.00
E61189000	BAKER Water Resistant Digital Dial Gauge, <b>Type W3</b> with metric & inch capability & RS232 data output, conforming to IP67. Reading : 0.001 mm / 0.00005 inch Range : 50 mm / 2.0 inch	37,210.00
E61199000	BAKER Water Resistant Digital Dial Gauge, <b>Type W1A</b> (with advance features) with metric & inch capability & RS232 data output, conforming to IP67. Reading : 0.001 mm / 0.00005 inch Range : 12.5 mm / 0.5 inch	21,950.00
E61299000	BAKER Water Resistant Digital Dial Gauge, <b>Type W2A</b> (with advance features) with metric & inch capability & RS232 data output, conforming to IP67. Reading : 0.001 mm / 0.00005 inch Range : 25 mm / 1.0 inch	22,910.00
E61179000	BAKER Water Resistant Digital Dial Gauge, <b>Type W3A</b> (with advance features) with metric & inch capability & RS232 data output, conforming to IP67. Reading : 0.001 mm / 0.00005 inch Range : 50 mm / 2.0 inch	38,480.00
E62211005	BAKER <b>Proximity Cable</b> for RS232 interface suitable for W1, W2, W3, W1A, W2A & W3A Digital Dial Gauges.	7,210.00
E62211004	BAKER <b>Proximity Cable</b> for USB interface suitable for W1, W2, W3, W1A, W2A & W3A Digital Dial Gauges.	7,210.00
E61081028	Lugback with screws for W1, W2, W3, W1A, W2A & W3A Digital Dial Gauges	950.00

## VALUELINE DIGITAL DIAL GAUGES (PLUNGER TYPE)

PRODUCT CODE	DESCRIPTION	UNIT RATE ₹
E61109000	BAKER Digital Dial Gauge, <b>Type V1</b> with metric & inch capability Reading : 0.01 mm / 0.0005 inch Range : 12.5 mm / 0.5 inch	6,680.00
E61119000	BAKER Digital Dial Gauge, <b>Type V2</b> with metric & inch capability Reading : 0.01 mm / 0.0005 inch Range : 25 mm / 1.0 inch	8,360.00
E61129000	BAKER Digital Dial Gauge, <b>Type V3</b> with metric & inch capability Reading : 0.01 mm / 0.0005 inch Range : 50 mm / 2.0 inch	22,170.00



## VALUELINE DIGITAL DIAL GAUGES (PLUNGER TYPE)

PRODUCT CODE	DESCRIPTION	UNIT RATE ₹
E61209000	BAKER Digital Dial Gauge, <b>Type V1P</b> with metric & inch capability Reading : 0.001 mm / 0.00005 inch Range : 12.5 mm / 0.5 inch	12,890.00
E61219000	BAKER Digital Dial Gauge, <b>Type V2P</b> with metric & inch capability Reading : 0.001 mm / 0.00005 inch Range : 25 mm / 1.0 inch	15,490.00
E61101009	Lugback for V1, V2, V3, V1P, V2P Digital Dial Gauges	790.00

## TYRE TREAD DEPTH GAUGES

PRODUCT CODE	TYPE	READING	RANGE	GRADUATION	UNIT RATE ₹
D06579000	TTG01	0.1 mm	8.0 mm	-	2,055.00
D06599000	TTG02	0.004 inch	0.32 inch	-	2,260.00

## CRANKSHAFT GAUGES

D45579000	CS1	0.01 mm	60 - 600 mm	0-50	7,490.00
D45589000	CS2	0.0005 inch	2.4 - 23.6 inch	0-20	8,230.00

## PRECISION MEASURING INSTRUMENTS SET

D01579000	PMI-3	Set consisting of BAKER Digital Caliper SDN10, Dial Gauge KO2 & Micrometer MMC25			7,600.00
-----------	-------	---	--	--	----------

## HARDNESS TESTER DIAL GAUGES

PRODUCT CODE	DESCRIPTION	UNIT RATE ₹
D04329000	BAKER Hardness Tester Dial Gauge (Rockwell) Standard	3,200.00

## COMPARATOR STAND

D82039000	BAKER Comparator Stand - Type CS150 Gauging Height : 150mm	7,650.00
D82009000	BAKER Comparator Stand - Type CS 200 Gauging Height : 200 mm	9,210.00
D81019000	<b>BAKER Comparator Stand Serrated Base</b> Type CS-150-S (SIZE : 90X95) Gauging Height : 150mm	7,950.00
D82019000	<b>BAKER Comparator Stand Serrated Base</b> Type CS-200-S (SIZE : 150X100) Gauging Height : 200mm	9,800.00

# DIAL GAUGES & INSTRUMENTS



## MAGNETIC STAND

D83019000	BAKER Magnetic Stand - Type MS	1,700.00
D83029000	BAKER Magnetic Stand with Fine Adjustment - Type MSF	1,820.00
D83059000	BAKER Universal Magnetic Stand - Type UMS	3,590.00

## CHECK MASTER

D93009000	<b>Check Master</b> Table Size 270 X164 mm for ID & OD Comparator	65,000.00
-----------	---	-----------

## STANDARD ANVIL SET

D93001000	<b>Standard Anvil</b> Set for ID & OD Measurement	7,500.00
-----------	---	----------

## MICROMETER STAND

M03189000	<b>Micrometer Stand</b> BMS 100	1,270.00
-----------	---------------------------------	----------

## DIAL SNAP GAUGES

PRODUCT CODE	DESCRIPTION	UNIT RATE ₹
D89009000	BAKER Type DS25 Dial Snap Gauge (without Dial Gauge) Range : 0 - 25 mm	7,550.00
D89019000	BAKER Type DS50 Dial Snap Gauge (without Dial Gauge) Range : 25 - 50 mm	7,800.00
D89029000	BAKER Type DS75 Dial Snap Gauge (without Dial Gauge) Range : 50 - 75 mm	8,890.00
D89039000	BAKER Type DS100 Dial Snap Gauge (without Dial Gauge) Range : 75 - 100 mm	9,320.00
D83049000	BAKER Type DS125 Dial Snap Gauge (without Dial Gauge) Range : 100 - 125 mm	10,820.00
D83059000	BAKER Type DS150 Dial Snap Gauge (without Dial Gauge) Range : 125 - 150 mm	11,610.00
D83069000	BAKER Type DS175 Dial Snap Gauge (without Dial Gauge) Range : 150 - 175 mm	13,920.00
D83079000	BAKER Type DS200 Dial Snap Gauge (without Dial Gauge) Range : 175 - 200 mm	15,120.00

## LEVER TYPE DIAL GAUGES (MODEL 29)

PRODUCT CODE	TYPE	READING	RANGE	GRADUATION	UNIT RATE ₹
D30259000	302P	0.01 mm	0.8 mm	0-40-0	4,630.00
D34009000	304	0.002 mm	0.2 mm	0-10-0	6,570.00
D32009000	301	0.0005 inch	0.03 inch	0-15-0	6,260.00
D35009000	303	0.0001 inch	0.008 inch	0-4-0	10,380.00

Supplied with 2mm Ø T.C. Ball Stylus fitted to the gauge and 1mm Ø T.C. Ball Stylus, Height Gauge Adaptor, Ø 4mm & 8mm Dovetail Spigot Assembly and Universal Clamp as standard accessories in a box.

D30289000	302AP	0.01 mm	0.8 mm	0-40-0	3,670.00
D34509000	304A	0.002 mm	0.2 mm	0-10-0	5,840.00
D32519000	301A	0.0005 inch	0.03 inch	0-15-0	5,440.00
D35519000	303A	0.0001 inch	0.008 inch	0-4-0	9,510.00

Supplied with 2mm Ø T.C. Ball Stylus & 8mm Dovetail Spigot Assembly fitted to the gauge.

## LEVER TYPE DIAL GAUGES WITH LONG STYLUS (MODEL 29)

PRODUCT CODE	TYPE	READING	RANGE	GRADUATION	UNIT RATE ₹
D30039000	302L	0.01 mm	0.8 mm	0-40-0	6,480.00
D32039000	301L	0.0005 inch	0.03 inch	0-15-0	7,600.00

Supplied with 33mm long 2mm Ø T.C. Ball Stylus fitted to the gauge, Height Gauge Adaptor, Ø 4mm & 8mm Dovetail Spigot Assembly and Universal Clamp as standard accessories in a box.

D30519000	302AL	0.01 mm	0.8 mm	0-40-0	5,640.00
D33009000	301AL	0.0005 inch	0.03 inch	0-15-0	6,470.00

Supplied with 33mm long 2mm Ø T.C. Ball Stylus & 8mm Dovetail Spigot Assembly fitted to the Gauge.

## LEVER TYPE DIAL GAUGES (MODEL 38)

PRODUCT CODE	TYPE	READING	RANGE	GRADUATION	UNIT RATE ₹
D30279000	306P	0.01 mm	0.8 mm	0-40-0	5,290.00
D34029000	308	0.002 mm	0.2 mm	0-10-0	8,180.00
D32029000	305	0.0005 inch	0.03 inch	0-15-0	6,870.00
D35029000	307	0.0001 inch	0.008 inch	0-4-0	10,380.00

Supplied with 2mm Ø T.C. Ball Stylus fitted to the gauge and 1mm Ø T.C. Ball Stylus, Height Gauge Adaptor, Ø 4mm & 8mm Dovetail Spigot Assembly and Universal Clamp as standard accessories in a box.

D30299000	306AP	0.01 mm	0.8 mm	0-40-0	4,040.00
D34519000	308A	0.002 mm	0.2 mm	0-10-0	7,330.00
D32529000	305A	0.0005 inch	0.03 inch	0-15-0	5,980.00
D35539000	307A	0.0001 inch	0.008 inch	0-4-0	9,500.00

Supplied with 2mm dia. T.C. Ball Stylus & 8mm Dovetail Spigot Assembly fitted to the gauge.

## LEVER TYPE DIAL GAUGES WITH LONG STYLUS (MODEL 38)

PRODUCT CODE	TYPE	READING	RANGE	GRADUATION	UNIT RATE ₹
D30049000	306L	0.01 mm	0.8 mm	0-40-0	7,090.00
D32049000	305L	0.0005 inch	0.03 inch	0-15-0	8,330.00

Supplied with 33mm long 2mm Ø T.C. Ball Stylus fitted to the gauge, Height Gauge Adaptor, Ø 4mm & 8mm Dovetail Spigot Assembly and Universal Clamp as standard accessories in a box.

D30599000	306AL	0.01 mm	0.8 mm	0-40-0	6,240.00
D32549000	305AL	0.0005 inch	0.03 inch	0-15-0	7,070.00

Supplied with 33mm long 2mm Ø T.C. Ball Stylus & 8mm Dovetail Spigot Assembly fitted to the Gauge.

## BACK PLUNGER DIAL GAUGES (MODEL 38)

D40019000	FO1	0.01 mm	2.0 mm	0-50-0	2,480.00
D40009000	FO2	0.01 mm	2.0 mm	0-100	2,480.00
D42019000	F51	0.001 inch	0.1 inch	0-50-0	2,780.00
D42009000	F52	0.001 inch	0.1 inch	0-100	2,780.00

## UNIVERSAL TEST SETS

D46019000	UI01	0.01 mm	2.0 mm	0-50-0	4,070.00
D46009000	UI02	0.01 mm	2.0 mm	0-100	4,070.00
D47019000	UI51	0.001 inch	0.1 inch	0-50-0	4,480.00
D47009000	UI52	0.001 inch	0.1 inch	0-100	4,480.00

## DIAL BORE GAUGES

Range 4 - 6 mm (0.160" - 0.236")

PRODUCT CODE	TYPE	READING	BORE DEPTH	GRADUATION	UNIT RATE ₹
D71009000	K439	0.01 mm	35 mm	0-50-0	25,870.00

Range 6 - 10 mm (0.236" - 0.4")

D72009000	K539	0.01 mm	48 mm	0-50-0	13,545.00
-----------	------	---------	-------	--------	-----------



# DIAL GAUGES & INSTRUMENTS



## Range 10 - 18 mm (0.4" - 0.7")

PRODUCT CODE	TYPE	READING	BORE DEPTH	GRADUATION	UNIT RATE ₹
D77039000	K639	0.01 mm	100 mm	0-50-0	8,970.00
D77049000	K641	0.001 inch	4 inch	0-50-0	9,180.00

## Range 18 - 50 mm (0.7" - 2")

D73059000	K703	0.01 mm	150 mm	0-50-0	8,880.00
D73069000	K709	0.002 mm	150 mm	0-10-0	10,720.00
D73119000	K717	0.001 mm	150 mm	0-100-0	11,010.00
D73079000	K753	0.0005 inch	6 inch	0-25-0	10,140.00
D73089000	K761	0.0001 inch	6 inch	0-50-0	11,430.00

## Range 50 - 150 mm (2" - 6")

D75059000	K803	0.01 mm	150 mm	0-50-0	9,680.00
D75069000	K809	0.002 mm	150 mm	0-10-0	11,460.00
D75129000	K817	0.001 mm	150 mm	0-100-0	11,730.00
D75079000	K853	0.0005 inch	6 inch	0-25-0	11,370.00
D75089000	K861	0.0001 inch	6 inch	0-50-0	12,660.00

## DIAL BORE GAUGES (OLD DESIGN - SHALLOW TYPE)

### Range: 50 - 150 mm (2" - 6")

D75059000	K803S	0.01 mm	250 mm	0-50-0	10,750.00
D75059000	K809S	0.002 mm	250 mm	0-10-0	12,750.00
D75039000	K853S	0.0005"	10 inch	0-25-0	12,100.00
D75049000	K861S	0.0001"	10 inch	0-50-0	14,100.00

## DIAL BORE GAUGES

### Range 150 - 250 mm (6" - 10")

D78019000	K903	0.01 mm	150 mm	0-50-0	18,450.00
D78029000	K909	0.002 mm	150 mm	0-10-0	20,030.00
D78039000	K917	0.001 mm	150 mm	0-100-0	20,440.00
D78049000	K953	0.0005"	6 inch	0-25-0	19,250.00
D78059000	K961	0.0001"	6 inch	0-50-0	20,100.00

### Range 250 - 450 mm (10" - 18")

D79019000	K1003	0.01 mm	250mm	0-50-0	23,020.00
D79029000	K1009	0.002 mm	250mm	0-10-0	24,770.00
D79039000	K1017	0.001 mm	250mm	0-100-0	25,220.00
D79049000	K1053	0.0005"	10 inch	0-25-0	23,910.00
D79059000	K1061	0.0001"	10 inch	0-50-0	25,790.00

## BORE GAUGE ASSEMBLY (WITHOUT DIAL GAUGE)

### Range: 10 - 18 mm (0.4" - 0.7")

PRODUCT CODE	DESCRIPTION	UNIT RATE ₹
D77009000	BAKER Bore Gauge Assembly (Without Dial Gauge)	6,470.00

### Range: 18 - 50 mm (0.7" - 2")

D73009000	BAKER Bore Gauge Assembly (Without Dial Gauge)	7,740.00
-----------	--	----------

### Range: 50 - 150 mm (2" - 6")

D75009000	BAKER Bore Gauge Assembly (Without Dial Gauge)	8,930.00
-----------	--	----------

**BORE GAUGE ASSEMBLY OLD DESIGN SHALLOW TYPE (WITHOUT DIAL GAUGE)**
**Range: 50 - 150 mm (2" - 6")**

PRODUCT CODE	DESCRIPTION	UNIT RATE ₹
D75009000	BAKER Bore Gauge Assembly (Without Dial Gauge)	9,370.00

**BORE GAUGE ASSEMBLY (WITHOUT DIAL GAUGE)**
**Range: 150 - 250 mm (6" - 10")**

PRODUCT CODE	DESCRIPTION	UNIT RATE ₹
D78009000	BAKER Bore Gauge Assembly (Without Dial Gauge)	17,160.00

**Range: 250 - 450 mm (10" - 18")**

PRODUCT CODE	DESCRIPTION	UNIT RATE ₹
D79009000	BAKER Bore Gauge Assembly (Without Dial Gauge)	21,940.00

**DIGITAL DIAL BORE GAUGES**
**Range: 10 - 18 mm (0.4" - 0.7")**

PRODUCT CODE	TYPE	READING	BORE DEPTH	UNIT RATE ₹
D77059000	K60/D	0.01 mm / 0.0005 inch	100 mm	14,210.00

**Range: 18 - 50 mm (0.7" - 2")**

D73099000	K70/D	0.01 mm / 0.0005 inch	150 mm	14,790.00
D73109000	K70/DP	0.001 mm / 0.00005 inch	150 mm	19,290.00

**Range: 50 - 150 mm (2" - 6")**

D75099000	K80/D	0.01 mm / 0.0005 inch	150 mm	15,070.00
D75159000	K80/DP	0.001 mm / 0.00005 inch	150 mm	19,310.00

**DIGITAL DIAL BORE GAUGES (OLD DESIGN - SHALLOW TYPE)**
**Range: 50 - 150 mm (2" - 6")**

-	K80DS	0.01 mm/0.0005 inch	250 mm	16,050.00
-	K80DPS	0.001 mm/0.00005 inch	250 mm	22,260.00

**DIGITAL DIAL BORE GAUGES**
**Range 150-250 mm (6" - 10")**

D78069000	K90/D	0.01 mm/0.0005 inch	250 mm	24,420.00
D78079000	K90/DP	0.001 mm/0.00005 inch	250 mm	29,890.00

**Range 250-450 mm (10" - 17")**

D79069000	K10/D	0.01 mm/0.0005 inch	250 mm	28,990.00
D79079000	K10/DP	0.001 mm/0.00005 inch	250 mm	34,460.00
D75759000	200 mm Bore Gauge Depth Extension (50-150 mm)			1,350.00

**DIAL DEPTH GAUGES**

PRODUCT CODE	TYPE	READING	RANGE	GRADUATION	UNIT RATE ₹
D50019000	K158/0	0.1 mm	0-200 mm	10-0	3,010.00
D51049000	K158/3	0.01 mm	0-200 mm	100-0	3,410.00
D52039000	K158/1	0.001 inch	0-8 inch	100-0	3,750.00

# DIAL GAUGES & INSTRUMENTS



## DIGITAL DIAL DEPTH GAUGES

PRODUCT CODE	TYPE	READING	RANGE	GRADUATION	UNIT RATE ₹
D51079000	K158/D	0.01mm / 0.0005 inch	0-200 mm / 0-8 inch	-	9,300.00
D51089000	K158/DP	0.001mm / 0.00005 inch	0-200 mm / 0-8 inch	-	13,580.00

## DIAL THICKNESS GAUGES 130 Series (Throat Depth: 30 mm)

PRODUCT CODE	TYPE	READING	RANGE	GRADUATION	UNIT RATE ₹
D60159000	K130/0	0.1 mm	10.0 mm	0-10	2,460.00
D61159000	K130/3	0.01 mm	10.0 mm	0-100	2,550.00
D63039000	K130/6	0.002 mm	2.0 mm	0-20	4,290.00
D63049000	K130/7	0.002 mm	5.0 mm	0-20	4,740.00
D62109000	K130/1	0.001 inch	0.5 inch	0-100	2,890.00
D64039000	K130/8	0.0001 inch	0.05 inch	0-100	4,710.00
D64049000	K130/9	0.0001 inch	0.2 inch	0-100	5,220.00

## 142 Series (Throat Depth: 100 mm)

D60229000	K142/0	0.1 mm	10.0 mm	0-10	2,890.00
D61149000	K142/3	0.01 mm	10.0 mm	0-100	3,010.00
D62129000	K142/1	0.001 inch	0.5 inch	0-100	3,290.00

## 138 Series (Push Down Type) (Throat Depth: 50 mm)

D60219000	K138/0	0.1 mm	25.0 mm	0-10	4,200.00
D61139000	K138/3	0.01 mm	25.0 mm	0-100	4,480.00
D62139000	K138/1	0.001 inch	1.0 inch	0-100	4,920.00

## 138 Series (Throat Depth: 50 mm)

D60249000	K138/0L	0.1 mm	25.0 mm	0-10	4,570.00
D61179000	K138/3L	0.01 mm	25.0 mm	0-100	4,840.00
D62119000	K138/1L	0.001 inch	1.0 inch	0-100	5,330.00

## 145 Series (Throat Depth: 200 mm)

D60139000	K145/0	0.1 mm	10.0 mm	0-10	3,530.00
D61119000	K145/3	0.01 mm	10.0 mm	0-100	3,640.00
D62089000	K145/1	0.001 inch	0.5 inch	0-100	3,940.00

## 150 Series (Throat Depth: 200 mm)

D60149000	K150/0	0.1 mm	25.0 mm	0-10	5,210.00
D61129000	K150/3	0.01 mm	25.0 mm	0-100	5,500.00
D62099000	K150/1	0.001 inch	1.0 inch	0-100	5,990.00

## DIGITAL DIAL THICKNESS GAUGES 130 Series (Throat Depth: 30 mm)

PRODUCT CODE	TYPE	READING	RANGE	GRADUATION	UNIT RATE ₹
D60209000	K130/D	0.001 mm / 0.00005 inch	12.5 mm / 0.5 inch	-	19,100.00

## 142 Series (Throat Depth: 100 mm)

D60179000	K142/D	0.001 mm / 0.00005 inch	12.5 mm / 0.5 inch	-	19,310.00
-----------	--------	-------------------------	--------------------	---	-----------

## 138 Series (Throat Depth: 50 mm)

D60169000	K138/D	0.001 mm / 0.00005 inch	25 mm / 1.0 inch	-	22,060.00
-----------	--------	-------------------------	------------------	---	-----------

## 145 Series (Throat Depth: 200 mm)

D60189000	K145/D	0.001 mm / 0.00005 inch	12.5 mm / 0.5 inch	-	19,860.00
-----------	--------	-------------------------	--------------------	---	-----------

## 150 Series (Throat Depth: 200 mm)

D60199000	K150/D	0.001 mm / 0.00005 inch	25 mm / 1.0 inch	-	22,610.00
-----------	--------	-------------------------	------------------	---	-----------



**ACCESSORIES FOR 'K' SERIES**

PRODUCT CODE	DESCRIPTION	UNIT RATE RS.
D01009109	Tungsten Carbide Ball Anvil	120.00
D01009104	Saphire Ball Anvil	210.00
D01009103	Ruby Ball Anvil	390.00
D01009131	Flat Anvil 5 mm dia.	180.00
D60007020	Flat Anvil 10 mm dia.	240.00
D01009170	Flat Anvil 20 mm dia.	340.00
D46009030	Hemispherical Anvil	210.00
D01009141	Chisel Anvil	240.00
D01009151	Needle Anvil	220.00
D01009133	Stylus Anvil	240.00
D01009160	Conical Anvil	220.00
D01009135	Long Conical Point Anvil	275.00
D50009923	Rack Extension 25 mm	80.00
D50009924	Rack Extension 50 mm	100.00
D50009925	Rack Extension 100 mm	140.00
D01099910	Centre Lugback Cover	80.00
D01099913	Flat Back Cover	80.00
D01099912	Offset Lugback cover	80.00
D01099914	Sliding Back-Female	360.00
D01099915	Sliding Back-Male	330.00
D01099900	Sliding Back-Male with Spigot	440.00
D60009300	Lifting Lever- New	220.00
D01009940	Rubber Bellow	80.00

- "Certificate of Inspection" is provided with each gauge, traceable to National/International Length Standards.
- For NABL (National Accreditation Board for Testing & Calibration Laboratories) Certification, extra charges will be applicable, which can be made available on request. For NABL Scope of Accreditation, please refer page 27 & 28
- All Model 40 & Model 56 Plunger Type Dial Gauges are supplied fitted with Flat Back and a spare Central Lug Back in a plastic box.
- All Dial Gauges are supplied with Tungsten Carbide Ball Anvil.

**INTERNAL GROOVE CALIPERS ACCESSORIES**

PRODUCT CODE	DESCRIPTION	UNIT RATE ₹
D93069140	Contact Anvil 3 mm Lg	250.00
D93069141	Contact Anvil 4 mm Lg	250.00
D93069142	Contact Anvil 5 mm Lg	250.00
D93069143	Contact Anvil 6 mm Lg	250.00
D93069144	Contact Anvil 7 mm Lg	250.00
D93069145	Contact Anvil 8 mm Lg	250.00
D93069146	Contact Anvil 9 mm Lg	250.00
D93069147	Contact Anvil 10 mm Lg	250.00
D93069148	Contact Anvil 2 mm Lg	250.00
D93069201	Contact Anvil 2 mm IGC-SPT2-1	250.00
D93069202	Contact Anvil 3 mm IGC-SPT2-2	250.00
D93069203	Contact Anvil 4 mm IGC-SPT2-3	250.00
D93069204	Contact Anvil 5 mm IGC-SPT2-4	250.00
D93069205	Contact Anvil 6 mm IGC-SPT2-5	250.00
D93069206	Contact Anvil 7 mm IGC-SPT2-6	250.00
D93069207	Contact Anvil 8 mm IGC-SPT2-7	250.00
D93069208	Contact Anvil 9 mm IGC-SPT2-8	250.00
D93069209	Contact Anvil 10 mm IGC-SPT2-9	250.00
D93069211	Contact Anvil 2 mm IGC-SPT3-1	250.00
D93069212	Contact Anvil 3 mm IGC-SPT3-2	250.00
D93069213	Contact Anvil 4 mm IGC-SPT3-3	250.00
D93069214	Contact Anvil 5 mm IGC-SPT3-4	250.00
D93069215	Contact Anvil 6 mm IGC-SPT3-5	250.00
D93069216	Contact Anvil 7 mm IGC-SPT3-6	250.00
D93069217	Contact Anvil 8 mm IGC-SPT3-7	250.00
D93069218	Contact Anvil 9 mm IGC-SPT3-8	250.00
D93069219	Contact Anvil 10 mm IGC-SPT3-9	250.00

**HEIGHT GAUGE ACCESSORIES**

PRODUCT CODE	DESCRIPTION	UNIT RATE ₹
D63459000	Height Gauge Adaptor for Bevel Protractor	990.00

**SURFACE ROUGHNESS TESTER ACCESSORIES**

PRODUCT CODE	DESCRIPTION	UNIT RATE ₹
E63081001	Adjustable Height Support Feet	1395.00
E63081002	Magnetic Stand Adapter	1950.00
E63081003	Height Gauge Adapter	5550.00
E63081004	Measurement Stand Small Size Aluminum Plate Lifting Height - 200mm	22230.00
E63081005	Measurement Stand Marble Plate Lifting Height - 350mm	49995.00
E63081006	Extension Rod (50mm)	8340.00
E63081007	Small Hole Sensor	83340.00
E63081008	Curved Surface Sensor	83340.00
E63081009	Extra Small Hole Sensor	83340.00
E63081010	Deep Groove Sensor	88890.00
E63081011	Nosepiece for Flat Surface	1395.00
E63081012	Nosepiece for Cylindrical Surface	1395.00
E63081013	Miniature Thermal Printer	13890.00

Spare parts list for Type : K01, K02, K03, K04, KY & KZ

REF NO.	PART NO.	PART DESCRIPTION	USED ON	UNIT RATE ₹
1	D01009060	TOLERANCE POINTER	K02,K01,K03,K04,KZ,KY	50.00
2	D01099050	CRYSTAL	K02,K01,K03,K04,KZ,KY	35.00
3	D01094020	OUTER DIAL SPACER	K02,K01,K03,K04,KZ,KY	35.00
4	D01094010	OUTER DIAL	K02, K04,	80.00
	D01354010	OUTER DIAL	K01,K03	80.00
	D01394010	OUTER DIAL	KZ,KY	80.00
5	D01006000	SMALL POINTER ASSLY.	K02,K01,K03,K04,KZ,KY	80.00
6	D01005000	LARGE POINTER ASSY	K02,K01,K03,K04,KZ,KY	80.00
7	D01093020	INNER DIAL	GIVE TYPE NO	100.00
8	D01003010	O RING	K02,K01,K03,K04,KZ,KY	20.00
9	D01099040	K02 BEZEL AL BLACK	K02,K01,K03,K04,KZ,KY	100.00
10	D01091082	BOTTOM PLATE SCREW (M2x6MM Lg)	K02,K01,K03,K04,KZ,KY	20.00
11	D01009010	B/Z RETAINING WASHER F/R	K02,K01,K03,K04,KZ,KY	20.00
12	D01009020	B/Z RETAINING WASHER H/R	K02,K01,K03,K04,KZ,KY	20.00
13	D01131100	BOTTOM PLATE SUB ASSY	K02,K01,K03,K04,KZ,KY	350.00
14	D01001010	BACKLASH HAIR SPRING PIN	K02,K01,K03,K04,KZ,KY	30.00
15	D01091020	CENTER PINION	K02,K01,K03,K04,KZ,KY	145.00
16	D01001400	RACK WHEEL & BOSS ASSY	K02,K01,K03,K04,KZ,KY	150.00
17	D01091200	B/L SPINDLE & WHEEL ASSY	K02,K01,K03,K04,KZ,KY	110.00
18	D01091500	RACK PINION & PIN ASSY	K02,K01,K03,K04,KZ	110.00
19	D01091300	BACKLASH HAIR SPRING	K02,K01,K03,K04,KZ,KY	90.00
20	D01091900	TOP PLATE & HOUSING ASSLY	K02,K01,K03,K04,KZ,KY	70.00
21	D01001080	PH CHEESE HD SCREW(M2x4MM Lg)	K02,K01,K03,K04,KZ,KY	20.00
22	D01009613	TOP SCREW FOR FLOATING TOP CAP	K02,K01,K03,K04,KZ,KY	40.00
23	D01009603	FLOATING TOP CAP	K02,K01,K03,K04,KZ,KY	40.00
24	D01002062	TOP KNOB AND BEZEL CLAMP BLACK	K02,K01,K03,K04,KZ,KY	35.00
25	D01099071	BEZEL CLAMP	K02,K01,K03,K04,KZ,KY	30.00
26	D01002130	TOP BRG PLAIN	K02,K01,K03,K04,KZ,KY	35.00
27	D01092101	CASE & BEARING ASSLY	K02,K01,K03,K04,KZ,KY	480.00
28	D01092040	TENSION SPRING	K02,K01,K03,K04,KZ,	35.00
29	D01099910	CENTER LUGBACK COVER	K02,K01,K03,K04,KZ,KY	80.00
30	D01099913	FLAT BACK	K02,K01,K03,K04,KZ,KY	80.00
31	D01001080	PH CHEESE HD SCREW(M2x4MM Lg)	K02,K01,K03,K04,KZ,KY	20.00
32	D01092170	BOTTOM BEARING LINER	K02,K01,K03,K04,KZ,KY	30.00
33	D01002010	PLUNGER	K02,K01	210.00
	D01022010	PLUNGER	K03,K04,KZ	210.00
	D25002010	PLUNGER	KY	440.00
34	D01002050	PLUNGER STOP SCREW	K02,K01,K03,K04,KZ,KY	20.00
35	D01092020	PLUNGER GUIDE PIN	K02,K01,K03,K04,KZ,KY	25.00
36	D01009109	T.C. BALL ANVIL	K02,K01,K03,K04,KZ,KY	120.00



# DIAL GAUGE SPARES



Spare parts list for Type : K06, K06A, K08, K49, K50, K57, K58

REF NO.	PART NO.	PART DESCRIPTION	USED ON	UNIT RATE ₹
1	D01009060	TOLERANCE POINTER	K06,K08,K50,K49,K57,K58	50.00
2	D01099050	CRYSTAL	K06,K08,K50,K49,K57,K58	35.00
3	D01094020	OUTER DIAL SPACER	K06,K08,K50,K49,K57,K58	35.00
4	D01094010	OUTER DIAL	K08,K50	80.00
	D06114010	OUTER DIAL	k06	80.00
	D16054010	OUTER DIAL	k57	80.00
	D16064010	OUTER DIAL	k49,k58	80.00
5	D01006000	SMALL POINTER ASSLY.	K06,K08,K50,K49,K57,K58	80.00
6	D01005000	LARGE POINTER ASSY	K06,K08,K50,K49,K57,K58	80.00
7	D01383020	INNER DIAL	GIVETYPENO	100.00
8	D01003010	O RING	K06,K08,K50,K49,K57,K58	20.00
9	D01099040	K02 BEZEL AL BLACK	K06,K08,K50,K49,K57,K58	100.00
10	D01091082	BOTTOM PLATE SCREW (M2x6MM Lg)	K06,K08,K50,K49,K57,K58	20.00
11	D01009010	B/Z RETAINING WASHER F/R	K06,K08,K50,K49,K57,K58	20.00
12	D01009020	B/Z RETAINING WASHER H/R	K06,K08,K50,K49,K57,K58	20.00
13	D01091100	BOTTOM PLATE SUB ASSY	K06,K08,K50,K49,K57,K58	350.00
14	D01001010	BACKLASH HAIR SPRING PIN	K06,K08,K50,K49,K57,K58	30.00
15	D01091020	CENTER PINION	K08,K57,K58	145.00
	D06111020	CENTER PINION	K06	145.00
	D11081020	CENTER PINION	K50,K49,	145.00
	D06151020	CENTER PINION	K06A	145.00
16	D01381800	B/L INT PINION & WHEEL ASSY	K08,K57,K58	200.00
	D11081800	B/L INT PINION & WHEEL ASSY	K50,K49,	200.00
17	D01381600	RACK PINION & WHEEL ASSEMBLY	K08	255.00
	D06111600	RACK PINION & WHEEL ASSEMBLY	K06	255.00
	D11081600	RACK PINION & WHEEL ASSEMBLY	K50,K49,	255.00
	D16051600	RACK PINION & WHEEL ASSEMBLY	K57,K58	255.00
	D01381200	B/L SPINDLE & WHEEL ASSY	K08,K57,K58	110.00
18	D06111200	B/L SPINDLE & WHEEL ASSY	K06	110.00
	D11081200	B/L SPINDLE & WHEEL ASSY	K50,K49	110.00
	D06151200	B/L SPINDLE & WHEEL ASSY	K06A	110.00
19	D01091300	BACKLASH HAIR SPRING	K06,K08,K50,K49,K57,K58	90.00
20	D01091900	TOP PLATE & HOUSING ASSLY	K06,K08,K50,K49,K57,K58	70.00
21	D01001080	PH CHEESE HD SCREW(M2x4MM Lg)	K06,K08,K50,K49,K57,K58	20.00
22	D01009613	TOP SCREW FOR FLOATING TOP CAP	K06,K08,K50,K49,K57,K58	40.00
23	D01009603	FLOATING TOP CAP	K06,K08,K50,K49,K57,K58	40.00
24	D01002062	TOP KNOB AND BEZEL CLAMP BLACK	K06,K08,K50,K49,K57,K58	35.00
25	D01099071	BEZEL CLAMP	K06,K08,K50,K49,K57,K58	30.00
26	D01002130	TOP BRG PLAIN	K06,K08,K50,K49,K57,K58	35.00
27	D01382101	CASE & BEARING ASSLY	K06,K08,K50,K49,K57,K58	480.00
28	D01382030	PLUNGER GUIDE	K06,K08,K50,K49,K57,K58	210.00
29	D01382090	K08 RACK/SPRING SCREW	K06,K08,K50,K49,K57,K58	30.00
30	D01002041	TENSION SPRING	K06,K08,K50,K49,K57,K58	35.00
31	D01099910	CENTER LUGBACK COVER	K06,K08,K50,K49,K57,K58	80.00
32	D01001080	PH CHEESE HD SCREW(M2x4MM Lg)	K06,K08,K50,K49,K57,K58	20.00
33	D01099913	FLAT BACK	K06,K08,K50,K49,K57,K58	80.00
35	D01132010	PLUNGER	K08	320.00
	D06012010	PLUNGER	K06	210.00
	D11032010	PLUNGER	K50,K49,K57,K58	385.00
36	D01002050	PLUNGER STOP SCREW	K06,K08,K50,K49,K57,K58	20.00
37	D01382020	PLUNGER GUIDE PIN 1"	K06,K08,K50,K49,K57,K58	25.00
38	D01009109	T.C. BALL ANVIL	K06,K08,K50,K49,K57,K58	120.00

Spare parts list for Type : K05, K45, K46, K51, K52, K53, K54 & K55

REF NO.	PART NO.	PART DESCRIPTION	USED ON	UNIT RATE ₹
1	D01009060	TOLERANCE POINTER	K05,K45,K46,K51,K52,K55,K56,K53,K54	50.00
2	D01099050	CRYSTAL	K05,K45,K46,K51,K52,K55,K56,K53,K54	35.00
3	D01094020	OUTER DIAL SPACER	K05,K45,K46,K51,K52,K55,K56,K53,K54	35.00
4	D06114010	OUTER DIAL	K05,	80.00
	D01354010	OUTER DIAL	K45,K51,	80.00
	D01094010	OUTER DIAL	K46,K52,	80.00
	D16054010	OUTER DIAL	K55,K53,	80.00
	D16064010	OUTER DIAL	K56,K54	80.00
5	D01006000	SMALL POINTER ASSLY.	K05,K45,K46,K51,K52,K55,K56,K53,K54	80.00
6	D01005000	LARGE POINTER ASSY	K05,K45,K46,K51,K52,K55,K56,K53,K54	80.00
7	D01093020	INNER DIAL	GIVE TYPE NO.	100.00
8	D01003010	O RING	K05,K45,K46,K51,1`K55,K56,K53,K54	20.00
9	D01099040	K02 BEZEL AL BLACK	K05,K45,K46,K51,K52,K55,K56,K53,K54	100.00
10	D01091082	BOTTOM PLATE SCREW (M2x6MM Lg)	K05,K45,K46,K51,K52,K55,K56,K53,K54	20.00
11	D01009010	B/Z RETAINING WASHER F/R	K05,K45,K46,K51,K52,K55,K56,K53,K54	20.00
12	D01009020	B/Z RETAINING WASHER H/R	K05,K45,K46,K51,K52,K55,K56,K53,K54	20.00
13	D01131100	BOTTOM PLATE SUB ASSY	K05,K45,K46,K51,K52,K55,K56,K53,K54	350.00
14	D01001010	BACKLASH HAIR SPRING PIN	K05,K45,K46,K51,K52,K55,K56,K53,K54	30.00
15	D01091020	CENTER PINION	K55,K56,K53,K54	145.00
	D06111020	CENTER PINION	K05,	145.00
	D11081020	CENTER PINION	K45,K46,K51,K52,	145.00
16	D06111600	RACK PINION & WHEEL ASSEMBLY	K05,	320.00
	D11081600	RACK PINION & WHEEL ASSEMBLY	K45,K46,K51,K52,	320.00
	D16051600	RACK PINION & WHEEL ASSEMBLY	K55,K56,K53,K54	320.00
17	D01091200	B/L SPINDLE & WHEEL ASSY	K55,K56,K53,K54	110.00
	D06111200	B/L SPINDLE & WHEEL ASSY	K05,	110.00
	D11091200	B/L SPINDLE & WHEEL ASSY	K45,K46,K51,K52,	110.00
18	D01091300	BACKLASH HAIR SPRING	K05,K45,K46,K51,K52,K55,K56,K53,K54	90.00
19	D01001080	PH CHEESE HD SCREW(M2x4MM Lg)	K05,K45,K46,K51,K52,K55,K56,K53,K54	20.00
20	D01091900	TOP PLATE & HOUSING ASSLY	K05,K45,K46,K51,K52,K55,K56,K53,K54	70.00
21	D01009613	TOP SCREW FOR FLOATING TOP CAP	K05,K45,K46,K51,K52,K55,K56,K53,K54	40.00
22	D01009603	FLOATING TOP CAP	K05,K45,K46,K51,K52,K55,K56,K53,K54	40.00
23	D01002062	TOP KNOB AND BEZEL CLAMP BLACK	K05,K45,K46,K51,K52,K55,K56,K53,K54	35.00
24	D01099071	BEZEL CLAMP	K05,K45,K46,K51,K52,K55,K56,K53,K54	30.00
25	D01002130	TOP BRG PLAIN	K05,K45,K46,K51,K52,K55,K56,K53,K54	35.00
26	D01092101	CASE & BEARING ASSLY	K45,K46,K51,K52,K55,K56,K53,K54	480.00
	D06112101	CASE & BEARING ASSLY	K05,	480.00
27	D01092040	TENSION SPRING	K05,K45,K46,K51,K52,K55,K56,K53,K54	35.00
28	D01099910	CENTER LUGBACK COVER	K05,K45,K46,K51,K52,K55,K56,K53,K54	80.00
29	D01001080	PH CHEESE HD SCREW(M2x4MM Lg)	K05,K45,K46,K51,K52,K55,K56,K53,K54	20.00
30	D01099913	FLAT BACK	K05,K45,K46,K51,K52,K55,K56,K53,K54	80.00
31	D01092170	BOTTOM BEARING LINER	K05,K45,K46,K51,K52,K55,K56,K53,K54	30.00
32	D06002010	PLUNGER	K05,	210.00
	D11012010	PLUNGER	K45,K46,K51,K52,K55,K56,K53,K54	210.00
33	D01002050	PLUNGER STOP SCREW	K05,K45,K46,K51,K52,K55,K56,K53,K54	20.00
34	D01092020	PLUNGER GUIDE PIN	K05,K45,K46,K51,K52,K55,K56,K53,K54	25.00
35	D01009109	T.C. BALL ANVIL	K05,K45,K46,K51,K52,K55,K56,K53,K54	120.00



# DIAL GAUGE SPARES



Spare parts list for Type : K09, K10, K11, K12, K13, K14, K61, K62, K63, K64

REF NO.	PART NO.	PART DESCRIPTION	USED ON	UNIT RATE ₹
1	D01009060	TOLERANCE POINTER	K12, K09, K10, K11, K13, K14, K62, K61, K63, K64	50.00
2	D01099050	CRYSTAL	K12, K09, K10, K11, K13, K14, K62, K61, K63, K64	35.00
3	D01094020	OUTER DIAL SPACER	K12, K09, K10, K11, K13, K14, K62, K61, K63, K64	35.00
4	D23114010	OUTER DIAL	K12, K09, K10, K14	80.00
	D23124010	OUTER DIAL	K11, K13	80.00
	D01094010	OUTER DIAL	K62, K64	80.00
	D01354010	OUTER DIAL	K61, K63	80.00
5	D01006000	SMALL POINTER ASSLY.	K12, K09, K10, K11, K13, K14, K62, K61, K63, K64	80.00
6	D01005000	LARGE POINTER ASSY	K12, K09, K10, K11, K13, K14, K62, K61, K63, K64	80.00
7	D23113020	INNER DIAL	GIVE TYPE NO	100.00
8	D01003010	O RING	K12, K09, K10, K11, K13, K14, K62, K61, K63, K64	20.00
9	D01099040	K02 BEZEL AL BLACK	K12, K09, K10, K11, K13, K14, K62, K61, K63, K64	100.00
10	D01091082	BOTTOM PLATE SCREW (M2x6MM Lg)	K12, K09, K10, K11, K13, K14, K62, K61, K63, K64	20.00
11	D01009010	B/Z RETAINING WASHER F/R	K12, K09, K10, K11, K13, K14, K62, K61, K63, K64	20.00
12	D01009020	B/Z RETAINING WASHER H/R	K12, K09, K10, K11, K13, K14, K62, K61, K63, K64	20.00
13	D23111101	BOTTOM PLATE SUB ASSY	K12, K09, K10, K11, K13, K14, K62, K61, K63, K64	400.00
14	D01001010	BACKLASH HAIR SPRING PIN	K12, K09, K10, K11, K13, K14, K62, K61, K63, K64	30.00
15	D01091020	CENTER PINION	K12, K09, K10, K11, K13, K14, K62, K61, K63, K64	145.00
16	D01381800	B/L INT PINION & WHEEL ASSY	K12, K09, K10, K11, K13, K14, K62, K61, K63, K64	200.00
17	D23111600	RACK PINION & WHEEL ASSEMBLY	K12, K09, K10, K11, K13, K14	300.00
	D25091600	RACK PINION & WHEEL ASSEMBLY	K62, K61	300.00
	D25111600	RACK PINION & WHEEL ASSEMBLY	K63, K64	300.00
18	D23111200	B/L SPINDLE & WHEEL ASSY	K12, K09, K10, K11, K62, K61	110.00
	D23151200	B/L SPINDLE & WHEEL ASSY	K13, K14, K63, K64	110.00
19	D01091300	BACKLASH HAIR SPRING	K12, K09, K10, K11, K13, K14, K62, K61, K63, K64	90.00
20	D23111700	INTER PINION & WHEEL ASSLY.	K12, K09, K10, K11, K13, K14, K62, K61, K63, K64	200.00
21	D23111900	TOP PLATE ASSLY BETA K SERIES	K12, K09, K10, K11, K13, K14, K62, K61, K63, K64	85.00
22	D30001720	JEWEL	K12, K09, K10, K11, K13, K14, K62, K61, K63, K64	50.00
23	D01001080	PH CHEESE HD SCREW(M2x4MM Lg)	K12, K09, K10, K11, K13, K14, K62, K61, K63, K64	20.00
24	D01009613	TOP SCREW FOR FLOATING TOP CAP	K12, K09, K10, K11, K13, K14, K62, K61, K63, K64	40.00
25	D01009603	FLOATING TOP CAP	K12, K09, K10, K11, K13, K14, K62, K61, K63, K64	40.00
26	D01002062	TOP KNOB AND BEZEL CLAMP BLACK	K12, K09, K10, K11, K13, K14, K62, K61, K63, K64	35.00
27	D01099071	BEZEL CLAMP	K12, K09, K10, K11, K13, K14, K62, K61, K63, K64	30.00
28	D01002130	TOP BRG PLAIN	K12, K09, K10, K11, K13, K14, K62, K61, K63, K64	35.00
29	D23112101	CASE & BEARING ASSLY	K12, K09, K10, K11, K13, K14, K62, K61, K63, K64	180.00
30	D23112040	TENSION SPRING	K12, K09, K10, K11, K13, K14, K62, K61, K63, K64	35.00
31	D01099910	CENTER LUGBACK COVER	K12, K09, K10, K11, K13, K14, K62, K61, K63, K64	80.00
32	D01001080	PH CHEESE HD SCREW(M2x4MM Lg)	K12, K09, K10, K11, K13, K14, K62, K61, K63, K64	20.00
33	D01099913	FLAT BACK	K12, K09, K10, K11, K13, K14, K62, K61, K63, K64	80.00
34	D01092170	BOTTOM BEARING LINER	K12, K09, K10, K11, K13, K14, K62, K61, K63, K64	30.00
35	D23012010	PLUNGER	K09, K10	440.00
	D23002010	PLUNGER	K12, K11	440.00
	D23082010	PLUNGER	K13, K14	440.00
	D25002010	PLUNGER	K62, K61	440.00
	D11012010	PLUNGER	K63, K64	210.00
36	D01002050	PLUNGER STOP SCREW	K12, K09, K10, K11, K13, K14, K62, K61, K63, K64	20.00
37	D01092020	PLUNGER GUIDE PIN	K12, K09, K10, K11, K13, K14, K62, K61, K63, K64	25.00
38	D01009109	T.C. BALL ANVIL	K12, K09, K10, K11, K13, K14, K62, K61, K63, K64	120.00



Spare parts list for Type : K17S

REF NO.	PART NO.	PART DESCRIPTION	UNIT RATE ₹
1	D01009060	TOLERANCE POINTER	50.00
2	D01099050	CRYSTAL	35.00
3	D01094020	OUTER DIAL SPACER	35.00
4	D28074010	OUTER DIAL	80.00
5	D01005000	LARGE POINTER ASSY	80.00
6	D01006000	SMALL POINTER ASSLY.	80.00
7	D28083020	INNER DIAL	100.00
8	D01003010	O RING	20.00
9	D01099040	K02 BEZEL AL BLACK	100.00
10	D01091082	BOTTOM PLATE SCREW (M2x6MM Lg)	20.00
11	D01009010	B/Z RETAINING WASHER F/R	20.00
12	D01009020	B/Z RETAINING WASHER H/R	20.00
13	D28081100	BOTTOM PLATE SUB ASSY	400.00
15	D01001010	BACKLASH HAIR SPRING PIN	30.00
14	D28081020	CENTER PINION	145.00
16	D28081600	RACK PINION & WHEEL ASSEMBLY	240.00
17	D28081200	B/L SPINDLE & WHEEL ASSY	110.00
18	D28081300	BACKLASH HAIR SPRING	80.00
19	D28081900	TOP PLATE & JEWEL ASSLY	150.00
20	D01001080	PH CHEESE HD SCREW(M2x4MM Lg)	20.00
21	D28081180	ADJUSTABLE STOPPER	10.00
22	D40002060	SCREW FOR ADJUSTABLE STOPPER	10.00
23	D30031720	OLIVE JEWEL	50.00
24	D28081060	CAM ADJUSTMT SCREW	45.00
25	D28081800	CAM & PIN ASSLY	150.00
26	D28081050	CAM SCREW	10.00
27	D28081401	SEGMENT & SPINDLE ASSLY	85.00
28	D30001700	JEWEL HOUSING ASSY	85.00
29	D01009570	TOP CAP	30.00
30	D01002061	TOP SCREW	30.00
31	D01002062	TOP KNOB AND BEZEL CLAMP BLACK	35.00
32	D01099071	BEZEL CLAMP	30.00
33	D28082100	CASE & BEARING ASSLY	480.00
34	D28082040	TENSION SPRING	35.00
35	D01099913	FLAT BACK	80.00
36	D01099910	CENTER LUGBACK COVER	80.00
37	D01001080	PH CHEESE HD SCREW(M2x4MM Lg)	20.00
38	D01002050	PLUNGER STOP SCREW	20.00
39	D28082071	SEGMENT PIN	50.00
40	D01092020	PLUNGER GUIDE PIN	25.00
41	D28082010	PLUNGER	210.00
42	D01009109	T.C. BALL ANVIL	120.00
43	D30001712	LOCKING RING	30.00
44	D01002061	TOP SCREW	30.00

# DIAL GAUGE SPARES



Spare parts list for Type : K35, K36, K39, K40, K40Z, K41, K42, K43

REF NO.	PART NO.	PART DESCRIPTION	USED ON	UNIT RATE ₹
1	D01459060	TOLERANCE POINTER	K40,K39,K41,K42,K35,K36,K43,K40Z	20.00
2	D01459050	CRYSTAL	K40,K39,K41,K42,K35,K36,K43,K40Z	25.00
3	D01454020	DIAL SPACER	K40,K39,K41,K42,K35,K36,K43,K40Z	15.00
4	D01454010	OUTER DIAL	K40,K42	80.00
4	D06254010	OUTER DIAL	K35	80.00
4	D01464010	OUTER DIAL	K39,K41,	80.00
4	D05514010	OUTER DIAL	K36,K43	80.00
4	D01344010	OUTER DIAL	K40Z	80.00
5	D01456000	SMALL POINTER ASSLY.	K40,K39,K41,K42,K35,K36,K43,K40Z	30.00
6	D04755000	LARGE POINTER ASSY	K40,K39,K41,K42,K35,K36,K43,K40Z	30.00
7	D01453020	INNER DIAL		100.00
8	D01003010	O RING	K40,K39,K41,K42,K35,K36,K43,K40Z	20.00
9	D01459040	BEZEL	K40,K39,K41,K42,K35,K36,K43,K40Z	100.00
10	D01001080	PH CHEESE HD SCREW(M2x4MM Lg)	K40,K39,K41,K42,K35,K36,K43,K40Z	20.00
11	D01451100	BOTTOM PLATE SUB ASSY	K40,K39,K41,K42,K35,K36,K43,K40Z	350.00
12	D01001010	BACKLASH HAIR SPRING PIN	K40,K39,K41,K42,K35,K36,K43,K40Z	30.00
13	D01451200	B/L SPINDLE & WHEEL ASSY	K40,K39,K36K43,K40Z	110.00
13	D11121200	B/L SPINDLE & WHEEL ASSY	K41,K42	110.00
14	D01451600	RACK PINION & WHEEL ASSEMBLY	K40,K39,	255.00
14	D11121600	RACK PINION & WHEEL ASSEMBLY	K41,K42	255.00
14	D06251600	RACK PINION & WHEEL ASSEMBLY	K35	255.00
14	D01311600	RACK PINION & WHEEL ASSEMBLY	K36	255.00
14	D05511600	RACK PINION & WHEEL ASSEMBLY	K43	255.00
14	D01341500	RACK PINION & PIN ASSLY	K40Z	95.00
14	D01341400	RACK WHEEL & BOSS ASSY	K40Z	150.00
15	D01451020	CENTER PINION	K40,K39,K36,K43,K40Z	145.00
15	D11121020	CENTER PINION	K41,K42	145.00
15	D06251020	CENTER PINION	K35	145.00
16	D01451300	BACKLASH SPRING	K40,K39,K41,K42,K35,K36,K43,K40Z	25.00
17	D01451900	TOP PLATE & HOUSING ASSLY	K40,K39,K41,K42,K35,K36,K43,K40Z	60.00
18	D01091080	CHEESE HEAD SCREW M2 X 6MM	K40,K39,K41,K42,K35,K36,K43,K40Z	20.00
19	D01459613	SCREW FOR FLOATING TOP CAP	K40,K39,K41,K42,K35,K36,K43,K40Z	20.00
20	D01459603	FLOATING TOP CAP	K40,K39,K41,K42,K35,K36,K43,K40Z	20.00
21	D01002062	TOP KNOB AND BEZEL CLAMP BLACK	K40,K39,K41,K42,K35,K36,K43,K40Z	35.00
22	D01099071	BEZEL CLAMP	K40,K39,K41,K42,K35,K36,K43,K40Z	30.00
23	D01452040	TENSION SPRING	K40,K39,K41,K42,K35,K36,K43,K40Z	35.00
24	D01459910	CENTER LUGBACK COVER	K40,K39,K41,K42,K35,K36,K43,K40Z	25.00
25	D01459911	FLAT BACK	K40,K39,K41,K42,K35,K36,K43,K40Z	15.00
26	D01001080	PH CHEESE HD SCREW(M2x4MM Lg)	K40,K39,K41,K42,K35,K36,K43,K40Z	20.00
27	D01452100	CASE & BEARING ASSLY	K40,K39,K41,K42,K35, K43,K40Z	720.00
27	D01312100	CASE & BEARING ASSLY	K36	720.00
28	D01452170	BOTTOM BEARING LINER	K40,K39,K41,K42,K35,K36,K43,K40Z	10.00
29	D01452050	STOP SCREW	K40 K40,K39,K41,K42,K35,K36,K43,K40Z	20.00
30	D01452020	RACK GUIDE PIN	K40,K39,K41,K42,K35,K36,K43,K40Z	25.00
31	D01452010	PLUNGER	K40,K39,K36,K40Z	210.00
31	D11122010	PLUNGER	K41,K42,K43	210.00
31	D06252010	PLUNGER	K35	210.00
32	D01009109	T.C. BALL ANVIL	K40,K39,K41,K42,K35,K36,K43,K40Z	120.00
33	D01311700	INTER PINION & WHEEL ASSLY.	K36	200.00

Spare parts list for Type : J72 & J76

REF NO.	PART NO.	PART DESCRIPTION	USED ON	UNIT RATE ₹
1	D01149060	TOLERANCE POINTER	J72,J76,	275.00
2	D01149050	CRYSTAL	J72,J76,	125.00
3	D01144020	SPACER	J72,J76,	200.00
4	D01006000	SMALL POINTER ASSLY.	J72,J76,	80.00
5	D01145000	LARGE POINTER ASSY	J72,J76,	85.00
6	D01144010	OUTER DIAL	GIVE TYPE NO	160.00
7	D01143021	INNER DIAL	GIVE TYPE NO	195.00
8	D01003010	O RING	J72,J76,	20.00
9	D01149040	BEZEL	J72,J76,	430.00
10	D01091082	BOTTOM PLATE SCREW (M2x6MM Lg)	J72,J76,	20.00
11	D01009010	B/Z RETAINING WASHER F/R	J72,J76,	20.00
12	D01009020	B/Z RETAINING WASHER H/R	J72,J76,	20.00
13	D01002061	TOP SCREW	J72,J76,	30.00
14	D01141100	BOTTOM PLATE SUB ASSY	J72,	350.00
	D11041100	BOTTOM PLATE SUB ASSY	J76,	350.00
15	D01001010	BACKLASH HAIR SPRING PIN	J72,J76,	30.00
16	D01001200	B/L SPINDLE & WHEEL ASSY	J72,	110.00
	D11041200	B/L SPINDLE & WHEEL ASSY	J76,	110.00
17	D01001020	CENTER PINION	J72,	145.00
	D11001020	CENTER PINION	J76,	145.00
18	D01041600	RACK PINION & WHEEL ASSEMBLY	J72,	255.00
	D11001600	RACK PINION & WHEEL ASSEMBLY	J76,	255.00
19	D01141800	B/L INT PINION & WHEEL ASSY	J72,	110.00
	D11041800	B/L INT PINION & WHEEL ASSY	J76,	110.00
20	D01141300	BACKLASH HAIR SPRING	J72,J76,	90.00
21	D01141030	TOP PLATE	J72,	55.00
	D11041030	TOP PLATE	J76,	55.00
22	D01002061	TOP SCREW	J72,J76,	30.00
23	D01141040	CENTER PLATE	J72,	100.00
	D11041040	CENTER PLATE	J76,	100.00
24	D01001080	PH CHEESE HD SCREW(M2x4MM Lg)	J72,J76,	20.00
25	D01142070	CSK HEAD SCREW	J72,J76,	20.00
26	D01142061	TOP KNOB	J72,J76,	30.00
27	A95010007	O RING	J72,J76,	20.00
28	D73009043	WASHER	J72,J76,	20.00
29	D01002062	TOP KNOB AND BEZEL CLAMP BLACK	J72,J76,	35.00
30	D01002170	BOTTOM BEARING LINER	J72,J76,	30.00
31	D01009070	BEZEL CLAMP	J72,J76,	30.00
32	D01142100	CASE & BEARING ASSLY	J72,J76,	1800.00
33	D01142040	TENSION SPRING	J72,J76,	35.00
34	D01142200	PLUNGER GUIDE ASSEMBLY	J72,J76,	385.00
35	D01149910	CENTRE BACKLUG COVER	J72,J76,	155.00
36	D01042070	RETAINING SCREW TENSION SPRING	J72,J76,	20.00
37	D01001080	PH CHEESE HD SCREW(M2x4MM Lg)	J72,J76,	20.00
38	D01149911	FLAT BACK	J72,J76,	155.00
39	D01142010	PLUNGER	J72,	510.00
	D11042010	PLUNGER	J76,	510.00
	D11572010	PLUNGER	jb76	510.00
40	D01142020	PLUNGER GUIDE PIN	J72,J76,	25.00
41	D01009109	T.C. BALL ANVIL	J72,J76,	120.00



# DIAL GAUGE SPARES



Spare parts list for Type : K101

REF NO.	PART NO.	PART DESCRIPTION	UNIT RATE ₹
1	D01069060	TOLERANCE POINTER	90.00
2	D01069050	CRYSTAL	35.00
3	D01064020	SPACER M100	100.00
4	D01064010	OUTER DIAL	80.00
5	D01006000	SMALL POINTER ASSLY.	80.00
6	D01065000	LARGE POINTER ASSY	25.00
7	D01403020	INNER DIAL	100.00
8	D01003010	O RING	20.00
9	D01409040	BEZEL	880.00
10	D01091082	BOTTOM PLATE SCREW (M2x6MM Lg)	20.00
11	D01009010	B/Z RETAINING WASHER F/R	20.00
12	D01009020	B/Z RETAINING WASHER H/R	20.00
13	D01131100	BOTTOM PLATE SUB ASSY	350.00
14	D01001010	BACKLASH HAIR SPRING PIN	30.00
15	D01091020	CENTER PINION	145.00
16	D01001400	RACK WHEEL & BOSS ASSY	150.00
17	D01091200	B/L SPINDLE & WHEEL ASSY	110.00
18	D01091500	RACK PINION & PIN ASSY	110.00
19	D01091300	BACKLASH HAIR SPRING	90.00
20	D01091900	TOP PLATE & HOUSING ASSLY	70.00
21	D01001080	PH CHEESE HD SCREW(M2x4MM Lg)	20.00
22	D01009613	TOP SCREW FOR FLOATING TOP CAP	40.00
23	D01009603	FLOATING TOP CAP	40.00
24	D01062060	TOP KNOB AND BEZEL CLAMP BLACK	5.00
25	D01099071	BEZEL CLAMP	30.00
26	D01002130	TOP BRG PLAIN	35.00
27	D01092101	CASE & BEARING ASSLY	480.00
28	D01092040	TENSION SPRING	35.00
29	D01099910	CENTER LUGBACK COVER	80.00
30	D01099913	FLAT BACK	80.00
31	D01001080	PH CHEESE HD SCREW(M2x4MM Lg)	20.00
32	D01092170	BOTTOM BEARING LINER	30.00
33	D01062140	SLEEVE	70.00
34	D01002010	PLUNGER	210.00
35	D01002050	PLUNGER STOP SCREW	20.00
36	D01092020	PLUNGER GUIDE PIN	25.00
37	D01009921	EXTENSION 13MM	55.00
38	D01009109	T.C. BALL ANVIL	120.00

Spare parts list for Type : K100

REF NO.	PART NO.	PART DESCRIPTION	UNIT RATE ₹
1	D05509010	CRYSTAL	240.00
2	D01009109	MEASURING POINTER	100.00
3	D05509910	BACK PLATE	240.00
4	D05509020	TOLERANCE POINTER	100.00

# DIAL GAUGE SPARES



Spare parts list for Type : A51, A52, F01, F02, F51, F52

REF NO.	PART NO.	PART DESCRIPTION	USED ON	UNIT RATE ₹
1	D40001020	CRYSTAL M40	F02,F01,F51,F52,A51,A52,	30.00
2	D40001010	BEZEL FOR M40	F02,F01,F51,F52,A51,A52,	75.00
3	D40009020	BEZEL RETAINING C CLIP M40	F02,F01,F51,F52,A51,A52,	15.00
4	D40003000	POINTER ASSY	F02,F01,F51,F52,A51,A52,	25.00
5	D40009011	DIAL F02, YELLOW	F02,	90.00
6	D40009040	DIAL SPRING M40	F02,F01,F51,F52,A51,A52,	15.00
7	D40002060	CHEESE HD SCREW M2X2.5 LG.	F02,F01,F51,F52,A51,A52,	10.00
8	D40002050	TOP PLATE	F02,F01,F51,F52,A51,A52,	40.00
9	D40002430E	BACKLASH SPRING	F02,F01,F51,F52,A51,A52,	180.00
10	D40002400	B/L SPINDLE & WHEEL ASSY	F02,F01,	65.00
	D42002400	B/L SPINDLE & WHEEL ASSY	F51,F52,A51,A52,	65.00
11	D40002200	WORM & WHEEL ASSY	F02,F01,	150.00
	D42002200	WORM & WHEEL ASSY	F51,F52,A51,A52,	150.00
12	D40002040	CENTER PINION	F02,F01,	75.00
	D42002040	CENTER PINION	F51,F52,A51,A52,	85.00
13	D40002080	CHEESE HD SCREW M2X8.1 LG.	F02,F01,F51,F52,A51,A52,	10.00
14	D40002011	RACK GUIDE	F02,F01,	150.00
	D42002011	RACK GUIDE	F51,F52,A51,A52,	150.00
15	D40002030	RETURN SPRING	F02,F01,F51,F52,A51,A52,	10.00
16	D40002020	PLUNGER STOP SCREW	F02,F01,F51,F52,A51,A52,	10.00
17	D40002100	CASE & BEARING SUB ASSY	F02,F01,F51,F52,	750.00
	D42502100	CASE & BEARING SUB ASSY 3/8"	A51,A52,	750.00
18	D40002310	PLUNGER M2.5	F02,F01,F51,F52,	50.00
	D42502310	PLUNGER 4-48	A51,A52,	50.00
19	D40002321	PLUNGER PIN NEW	F02,F01,F51,F52,A51,A52,	30.00
20	D01009109	T.C. BALL ANVIL M 2.5	F02,F01,F51,F52,A51,A52,	120.00
21	D40009030	STEM	F02,F01,F51,F52,A51,A52,	30.00



Spare parts list for Type : 301, 301A, 301L, 301AL, 302, 302A, 302L, 302AL, 303, 303A, 303L, 303AL, 304, 304A, 304L, 304AL, 305, 305A, 305L, 305AL, 306, 306A, 306L, 306AL, 307, 307A, 307L, 307AL, 308, 308A, 308L, 308AL

REF NO.	PART NO.	PART DESCRIPTION	USED ON	UNIT RATE ₹
	D30004020	CRYSTAL	302, 302A, 301, 301A, 304, 304A, 303, 303A, 302L, 302AL 301L, 301AL,	35.00
	D40001020	CRYSTAL	306,306A,305, 305A 308,308A, 307, 307A 306,306AL 305L, 305AL,	40.00
	D30004010	BEZEL	302, 302A, 301, 301A, 304, 304A, 303, 303A, 302L, 302AL 301L, 301AL,	80.00
	D30014010	BEZEL	306,306A,305, 305A 308,308A, 307, 307A 306,306AL 305L, 305AL,	100.00
	D30003000	POINTER SUB ASSY	302, 302A, 301, 301A, 304, 304A, 303, 303A, 302L, 302AL 301L, 301AL,	155.00
	D30013000	POINTER SUB ASSY	306,306A,305, 305A 308,308A, 307, 307A 306,306AL 305L, 305AL,	155.00
4	D30009031	DIAL		70.00
	D30009020	DIAL SPRING	302, 302A, 301, 301A, 304, 304A, 303, 303A, 302L, 302AL 301L, 301AL,	40.00
	D30019020	DIAL SPRING	306,306A,305, 305A 308,308A, 307, 307A 306,306AL 305L, 305AL,	55.00
6	U90120200	CHEESE HEAD SCREW M1.6 X 3	302, 302A, 301, 301A, 304, 304A, 303, 303A, 306,306A,305, 305A 308,308A, 307, 307A 302L, 302AL 301L, 301AL, 306,306AL 305L, 305AL,	20.00
7	D30002130	TOP PLATE	302, 302A, 301, 301A, 304, 304A, 303, 303A, 306,306A,305, 305A 308,308A, 307, 307A 302L, 302AL 301L, 301AL, 306,306AL 305L, 305AL,	21.00
8	D30009050	CHEESE HEAD SCREW M1.6 X 5	302, 302A, 301, 301A, 304, 304A, 303, 303A, 306,306A,305, 305A 308,308A, 307, 307A 302L, 302AL 301L, 301AL, 306,306AL 305L, 305AL,	20.00
	D30002020	CENTER PINION	302, 302A, 301, 301A, 306,306A,305, 305A 302L, 302AL 301L, 301AL, 306,306AL 305L, 305AL,	100.00
	D34002020	CENTER PINION	304, 304A, 303, 303A, 308,308A, 307, 307A	230.00
	D30002110	BEZEL BODY ASSY-ALPHA	302, 302A, 301, 301A, 306,306A,305, 305A 302L, 302AL 301L, 301AL, 306,306AL 305L, 305AL,	175.00
	D34002110	BEZEL BODY ASSY-BETA	304, 304A, 303, 303A, 308,308A, 307, 307A	590.00
11	D30019060	SPACER	306,306A,305, 305A 308,308A, 307, 307A 306,306AL 305L, 305AL,	70.00
	D30009040	BEZEL RETAINING C CLIP M300	302, 302A, 301, 301A, 304, 304A, 303, 303A, 302L, 302AL 301L, 301AL,	20.00
	D30019040	BEZEL RETAINING C CLIP M300	306,306A,305, 305A 308,308A, 307, 307A 306,306AL 305L, 305AL,	25.00
13	D30009010	BEZEL BODY SHIM	302, 302A, 301, 301A, 304, 304A, 303, 303A, 306,306A,305, 305A 308,308A, 307, 307A 302L, 302AL 301L, 301AL, 306,306AL 305L, 305AL,	35.00
	D30002200	BACKLASH SPINDLE & WHEEL ASSY	302, 302A, 301, 301A, 306,306A,305, 305A 302L, 302AL 301L, 301AL, 306,306AL 305L, 305AL,	100.00
	D34002200	BACKLASH SPINDLE & WHEEL ASSY	304, 304A, 303, 303A, 308,308A, 307, 307A	100.00

# DIAL GAUGE SPARES



REF NO.	PART NO.	PART DESCRIPTION	USED ON	UNIT RATE ₹
15	D30002030	BACKLASH HAIR SPRING	302, 302A, 301, 301A, 304, 304A, 303, 303A, 306, 306A, 305, 305A 308, 308A, 307, 307A 302L, 302AL 301L, 301AL, 306, 306AL 305L, 305AL,	140.00
16	D30002010	BACKLASH SPRING RET CLIP	302, 302A, 301, 301A, 304, 304A, 303, 303A, 306, 306A, 305, 305A 308, 308A, 307, 307A 302L, 302AL 301L, 301AL, 306, 306AL 305L, 305AL,	30.00
17	D30001140	MAIN BODY SCREW 1.6 X 6LG	302, 302A, 301, 301A, 304, 304A, 303, 303A, 306, 306A, 305, 305A 308, 308A, 307, 307A 302L, 302AL 301L, 301AL, 306, 306AL 305L, 305AL,	20.00
18	D40529020	SLOTTED GRUB SCREW M1.6X4 LG.	304, 304A, 303, 303A, 308, 308A, 307, 307A 302L 302AL 301L, 301AL, 306, 306AL 305L, 305AL,	25.00
	D30001010	RETURN SPRING	302, 302A, 301, 301A, 306, 306A, 305, 305A 302L, 302AL 301L, 301AL, 306, 306AL 305L, 305AL,	30.00
	D34001010	RETURN SPRING	304, 304A, 303, 303A, 308, 308A, 307, 307A	40.00
20	D30001020	WASHER	302, 302A, 301, 301A, 304, 304A, 303, 303A, 306, 306A, 305, 305A 308, 308A, 307, 307A 302L, 302AL 301L, 301AL, 306, 306AL 305L, 305AL,	20.00
21	D30001030	CH.HD.SCREW-ALPHA	302, 302A, 301, 301A, 304, 304A, 303, 303A, 306, 306A, 305, 305A 308, 308A, 307, 307A 302L, 302AL 301L, 301AL, 306, 306AL 305L, 305AL,	30.00
	D30001500	FIRST PINION SUB ASSY	302, 302A, 301, 301A, 306, 306A, 305, 305A 302L, 302AL 301L, 301AL, 306, 306AL 305L, 305AL,	100.00
	D34001500	FIRST PINION SUB ASSY	304, 304A, 303, 303A, 308, 308A, 307, 307A	300.00
	D30031500	FIRST PINION SUB ASSY	302L, 302AL 301L, 301AL, 306, 306AL 305L, 305AL,	165.00
	D30001120	COVER	302, 302A, 301, 301A, 306, 306A, 305, 305A 302L, 302AL 301L, 301AL, 306, 306AL 305L, 305AL,	75.00
	D34001120	COVER	304, 304A, 303, 303A, 308, 308A, 307, 307A	85.00
	D30001700	JEWEL HOUSING ASSLY	302, 302A, 301, 301A, 306, 306A, 305, 305A 302L, 302AL 301L, 301AL, 306, 306AL 305L, 305AL,	100.00
	D30001600	BALL RACE ASSY	304, 304A, 303, 303A, 308, 308A, 307, 307A	230.00
25	D30001710	LOCKING RING	302, 302A, 301, 301A, 304, 304A, 303, 303A, 306, 306A, 305, 305A 308, 308A, 307, 307A 302L, 302AL 301L, 301AL, 306, 306AL 305L, 305AL,	55.00
26	D30001600	BALL RACE ASSY	302, 302A, 301, 301A, 304, 304A, 303, 303A, 306, 306A, 305, 305A 308, 308A, 307, 307A 302L, 302AL 301L, 301AL, 306, 306AL 305L, 305AL,	230.00
27	D30001320	LEVER	302, 302A, 301, 301A, 304, 304A, 303, 303A, 306, 306A, 305, 305A 308, 308A, 307, 307A 302L, 302AL 301L, 301AL, 306, 306AL 305L, 305AL,	255.00
	D30001330	STYLUS SPINDLE	302, 302A, 301, 301A, 306, 306A, 305, 305A	385.00
	D34001330	STYLUS SPINDLE	304, 304A, 303, 303A, 308, 308A, 307, 307A, 302L, 302AL 301L, 301AL, 306, 306AL 305L, 305AL,	385.00
29	D30001350	SLOTTED HEAD GRUB SCREW	302, 302A, 301, 301A, 306, 306A, 305, 305A	10.00
30	D30001340	BUSH FOR STYLUS SPINDLE	302, 302A, 301, 301A, 306, 306A, 305, 305A	25.00
31	D30039940	EXTENSION FOR STYLUS	302L, 302AL 306, 306AL	100.00
	D32039940	EXTENSION FOR STYLUS	301L, 301AL, 305L, 305AL,	100.00
32	D30009935	STYLUS 1MM CARBIDE	302306, 306A, 302L306, 306A, L	320.00
	D30009934	STYLUS 2MM CARBIDE	302306, 306A, 302L306, 306A, L	280.00
	D32009935	STYLUS 1MM CARBIDE	301, 301A, 305, 305A 301L, 301AL, 305L, 305AL,	320.00
	D32009934	STYLUS 2MM CARBIDE	301, 301A, 305, 305A 301L, 301AL, 305L, 305AL,	280.00
	D34009935	STYLUS 1MM CARBIDE	304, 304A, 308, 308A,	320.00
	D34009934	STYLUS 2MM CARBIDE	304, 304A, 308, 308A,	320.00
	D35009935	STYLUS 1MM CARBIDE	303, 303A, 307, 307A	320.00
	D35009934	STYLUS 2MM CARBIDE	303, 303A, 307, 307A	320.00



## DIAL GAUGE SPARES

REF NO.	PART NO.	PART DESCRIPTION	USED ON	UNIT RATE ₹
33	D30001400	SEGMENT SPINDLE SUB ASSY	302, 302A, 301, 301A, 306,306A,305, 305A	200.00
	D34001400	SEGMENT SPINDLE SUB ASSY	304, 304A, 303, 303A, 308,308A, 307, 307A	410.00
	D30031400	SEGMENT SPINDLE SUB ASSY	302L,302AL 301L, 301AL, 306,306AL 305L, 305AL,	275.00
34	D30001110	MAIN BODY	302, 302A, 301, 301A, 306,306A,305, 305A	500.00
	D34001110	MAIN BODY	304, 304A, 303, 303A, 308,308A, 307, 307A	550.00
	D30031110	MAIN BODY	302L,302AL 301L, 301AL, 306,306AL 305L, 305AL,	550.00
35	D30001140	MAIN BODY SCREW 1.6 X 6LG	302, 302A, 301, 301A, 304, 304A, 303, 303A, 306, 306A,305, 305A 308,308A, 307, 307A 302L,302AL 301L, 301AL, 306,306AL 305L, 305AL,	20.00
36	D37001003	UNIVERSAL CLAMP ASSY 8MM	302, 302A, 301, 301A, 304, 304A, 303, 303A, 306, 306A,305, 305A 308,308A, 307, 307A 302L,302AL 301L, 301AL, 306,306AL 305L, 305AL,	350.00
37	D37002001	HT. GAUGE ADAPTOR ASSLY LOCAL	302, 302A, 301, 301A, 304, 304A, 303, 303A, 306,306A,305, 305A 308,308A, 307, 307A 302L, 302AL 301L, 301AL, 306,306AL 305L, 305AL,	255.00
38	D37003010	SPIGOT DIA 8MM	302, 302A, 301, 301A, 304, 304A, 303, 303A, 306,306A,305, 305A 308,308A, 307, 307A 302L, 302AL 301L, 301AL, 306,306AL 305L, 305AL,	230.00
39	D37003014	SPIGOT DIA 4MM	302, 302A, 301, 301A, 304, 304A, 303, 303A, 306,306A,305, 305A 308,308A, 307, 307A 302L, 302AL 301L, 301AL, 306,306AL 305L, 305AL,	230.00
40	D37003020	DOVETAIL	302, 302A, 301, 301A, 304, 304A, 303, 303A, 306,306A,305, 305A 308,308A, 307, 307A 302L, 302AL 301L, 301AL, 306,306AL 305L, 305AL,	65.00
41	D30009983	SPANNER	302, 302A, 301, 301A, 304, 304A, 303, 303A, 306,306A,305, 305A 308,308A, 307, 307A 302L, 302AL 301L, 301AL, 306,306AL 305L, 305AL,	10.00



# CALIPERS



## DIGITAL CALIPERS

PRODUCT CODE	DESCRIPTION	UNIT RATE ₹
E62219000	BAKER Water Resistant Digital Caliper <b>Type ZD10</b> , with metric & inch capability and RS232 data output, conforming to IP67. Reading : 0.01 mm / 0.0005 inch Range : 0 - 150 mm / 0 - 6 inch	9,280.00
E62229000	BAKER Water Resistant Digital Caliper <b>Type ZD20</b> , with metric & inch capability and RS232 data output, conforming to IP67. Reading : 0.01 mm / 0.0005 inch Range : 0 - 200 mm / 0 - 8 inch	12,320.00
E62239000	BAKER Water Resistant Digital Caliper <b>Type ZD30</b> , with metric & inch capability and RS232 data output, conforming to IP67. Reading : 0.01 mm / 0.0005 inch Range : 0 - 300 mm / 0 - 12 inch	15,350.00
E62211005	BAKER <b>Proximity Cable</b> for RS232 interface suitable for BAKER ZD series IP67 Digital Calipers	7,210.00
E62211004	BAKER <b>Proximity Cable</b> for USB interface suitable for BAKER ZD series IP67 Digital Calipers	7,210.00
E62189000	BAKER Digital Caliper <b>Type SDN10</b> , with metric & inch capability. Reading : 0.01 mm / 0.0005 inch Range : 0 - 150 mm / 0 - 6 inch	5,830.00
E62199000	BAKER Digital Caliper <b>Type SDN20</b> , with metric & inch capability. Reading : 0.01 mm / 0.0005 inch Range : 0 - 200 mm / 0 - 8 inch	7,730.00
E62209000	BAKER Digital Caliper <b>Type SDN30</b> , with metric & inch capability. Reading : 0.01 mm / 0.0005 inch Range : 0 - 300 mm / 0 - 12 inch	10,160.00
E62319000	BAKER IP66 Large Diameter Digital Caliper <b>Type SDN50</b> , with metric & inch capability. Reading : 0.01 mm / 0.0005 inch Range : 0 - 500 mm / 0 - 20 inch	24,000.00
E62329000	BAKER IP66 Large Diameter Digital Caliper <b>Type SDN60</b> , with metric & inch capability. Reading : 0.01 mm / 0.0005 inch Range : 0 - 600 mm / 0 - 24 inch	32,500.00
E62339000	BAKER IP66 Large Diameter Digital Caliper <b>Type SDN80</b> , with metric & inch capability. Reading : 0.01 mm / 0.0005 inch Range : 0 - 800 mm / 0 - 32 inch	46,900.00
E62349000	BAKER IP66 Large Diameter Digital Caliper <b>Type SDN100</b> , with metric & inch capability. Reading : 0.01 mm / 0.0005 inch Range : 0 - 1000 mm / 0 - 40 inch	61,000.00
E63159000	BAKER IP65 Digital Caliper <b>Type SDN150</b> , with metric & inch capability. Reading : 0.01 mm / 0.0005 inch Range : 0 - 1500 mm / 0 - 60 inch	88,600.00
E63169000	BAKER IP65 Digital Caliper <b>Type SDN200</b> , with metric & inch capability. Reading : 0.01 mm / 0.0005 inch Range : 0 - 2000 mm / 0 - 80 inch	1,66,000.00
E64019000	BAKER Digital Caliper <b>Type ED10</b> , with metric & inch capability. Reading : 0.01 mm / 0.0005 inch Range : 0 - 150 mm / 0 - 6 inch	3,620.00
E64029000	BAKER Digital Caliper <b>Type ED20</b> , with metric & inch capability. Reading : 0.01 mm / 0.0005 inch Range : 0 - 200 mm / 0 - 8 inch	5,450.00
E64039000	BAKER Digital Caliper <b>Type ED30</b> , with metric & inch capability. Reading : 0.01 mm / 0.0005 inch Range : 0 - 300 mm / 0 - 12 inch	7,370.00

## DIGITAL DEPTH CALIPERS

E71009000	BAKER Digital Depth Caliper <b>Type DDC10</b> , with metric & inch capability. Reading : 0.01 mm / 0.0005 inch Range : 0 - 150 mm / 0 - 6 inch	4,940.00
E72009000	BAKER Digital Depth Caliper <b>Type DDC20</b> , with metric & inch capability. Reading : 0.01 mm / 0.0005 inch Range : 0 - 200 mm / 0 - 8 inch	6,050.00
E73009000	BAKER Digital Depth Caliper <b>Type DDC30</b> , with metric & inch capability. Reading : 0.01 mm / 0.0005 inch Range : 0 - 300 mm / 0 - 12 inch	11,100.00
D93069000	BAKER Internal Groove Caliper <b>Type IGC10</b> Reading : 0.010 mm Range : 10-120 mm	20,770.00

## DIAL CALIPERS

PRODUCT CODE	DESCRIPTION	UNIT RATE ₹
D85049000	BAKER Dial Caliper <b>Type DC10</b> with adjustable Bezel. Reading : 0.02 mm Range : 0 - 150 mm	3,590.00
D85059000	BAKER Dial Caliper <b>Type DC20</b> with adjustable Bezel. Reading : 0.02 mm Range : 0 - 200 mm	6,020.00
D85069000	BAKER Dial Caliper <b>Type DC30</b> with adjustable Bezel. Reading : 0.02 mm Range : 0 - 300 mm	8,010.00

## VERNIER CALIPERS

PRODUCT CODE	DESCRIPTION	UNIT RATE ₹
D85079000	BAKER Vernier Caliper <b>Type VC10</b> with metric & inch capability Reading : 0.02 mm / 0.001 inch Range : 0 - 150 mm / 0 - 6 inch	2,020.00
D85089000	BAKER Vernier Caliper <b>Type VC20</b> with metric & inch capability Reading : 0.02 mm / 0.001 inch Range : 0 - 200 mm / 0 - 8 inch	3,220.00
D85099000	BAKER Vernier Caliper <b>Type VC30</b> with metric & inch capability Reading : 0.02 mm / 0.001 inch Range : 0 - 300 mm / 0 - 12 inch	6,430.00
D85019000	BAKER Vernier Caliper <b>Type VCF10</b> with fine adjustment and metric & inch capability Reading : 0.02 mm / 0.001 inch Range : 0 - 130 mm / 0 - 5 inch	2,310.00
D85029000	BAKER Vernier Caliper <b>Type VCF20</b> with fine adjustment and metric & inch capability Reading : 0.02 mm / 0.001 inch Range : 0 - 180 mm / 0 - 7 inch	3,420.00
D85039000	BAKER Vernier Caliper <b>Type VCF30</b> with fine adjustment and metric & inch capability Reading : 0.02 mm / 0.001 inch Range : 0 - 280 mm / 0 - 11 inch	6,710.00
D85109000	BAKER Vernier Caliper <b>Type VCF45</b> with fine adjustment and metric & inch capability Reading : 0.02 mm / 0.001 inch Range : 0 - 430 mm / 0 - 17 inch	19,750.00
D85119000	BAKER Vernier Caliper <b>Type VCF60</b> with fine adjustment and metric & inch capability Reading : 0.02 mm / 0.001 inch Range : 0 - 580 mm / 0 - 23 inch	24,310.00
D85129000	BAKER Vernier Caliper <b>Type VCF80</b> with fine adjustment and metric & inch capability Reading : 0.02 mm / 0.001 inch Range : 0 - 780 mm / 0 - 31 inch	36,590.00
D85139000	BAKER Vernier Caliper <b>Type VCF100</b> with fine adjustment and metric & inch capability Reading : 0.02 mm / 0.001 inch Range : 0 - 980 mm / 0 - 39 inch	47,680.00
D85249000	BAKER Vernier Caliper <b>Type VCF150</b> with fine adjustment and metric & inch capability Reading : 0.02 mm / 0.001 inch Range : 0 - 1500 mm / 0 - 60 inch	87,000.00
D85259000	BAKER Vernier Caliper <b>Type VCF200</b> with fine adjustment and metric & inch capability Reading : 0.02 mm / 0.001 inch Range : 0 - 2000 mm / 0 - 80 inch	1,39,000.00

# DIGITAL HEIGHT GAUGES



## DIGITAL HEIGHT GAUGES

PRODUCT CODE	DESCRIPTION	UNIT RATE ₹
E63029000	BAKER Feed Wheel Type Digital Height Gauge <b>Type DH300</b> with metric & inch capability, supplied with tungsten carbide tipped scriber. Reading : 0.01 mm / 0.0005 inch Range : 0 - 300 mm / 0 - 12 inch	23,420.00
E63039000	BAKER Feed Wheel Type Digital Height Gauge <b>Type DH600</b> with metric & inch capability, supplied with tungsten carbide tipped scriber. Reading : 0.01 mm / 0.0005 inch Range : 0 - 600 mm / 0 - 24 inch	44,240.00
E62049000	BAKER Digital Height Gauge <b>Type DH1000</b> with metric & inch capability, supplied with tungsten carbide tipped scriber. Reading : 0.01 mm / 0.0005 inch Range : 0 - 1000 mm / 0 - 40 inch	74,690.00

## VERNIER HEIGHT GAUGES

PRODUCT CODE	DESCRIPTION	UNIT RATE ₹
D90049000	BAKER Vernier Height Gauge <b>Type VH300</b> mm with metric & inch capability, supplied with tungsten carbide tipped scriber and magnifying glass Reading : 0.02 mm / 0.001 inch Range : 0 - 300 mm / 0 - 12 inch	14,940.00
D90059000	BAKER Vernier Height Gauge <b>Type VH600</b> mm with metric & inch capability, supplied with tungsten carbide tipped scriber and magnifying glass Reading : 0.02 mm / 0.001 inch Range : 0 - 600 mm / 0 - 24 inch	25,360.00
E63069000	BAKER Double Column Digital Height Gauge <b>Type DCDH300</b> . Reading : 0.010 mm/0.0005" Range : 0-300 mm/0-12"	35,620.00
E63099000	BAKER Double Column Digital Height Gauge <b>Type DCDH600</b> Reading : 0.010 mm/0.0005" Range : 0-600 mm/0-24"	53,430.00

## SURFACE ROUGHNESS TESTER

E63089000	BAKER Portable Surface Roughness Tester SRT100	1,10,000.00
-----------	--	-------------

## UNIVERSAL BEVEL PROTRACTOR

D88019000	BAKER Precision Universal Bevel Protractor	5990.00
-----------	--	---------

## PRECISION SPIRIT LEVEL

PRODUCT CODE	DESCRIPTION	UNIT RATE ₹
D89409000	Spirit Level Type BSL 150 (150 x 0.02 mm)	8,990.00
D89419000	Spirit Level Type BSL 200 (200 x 0.02 mm)	9,400.00
D89429000	Spirit Level Type BSL 300 (300 x 0.02 mm)	11,700.00

## SLIP GAUGES - STEEL AND CARBIDE

PRODUCT CODE	DESCRIPTION	UNIT RATE ₹
D89259000	Slip Gauge Set - Steel M112/1 in Grade-0 (112 Pcs set)	1,10,000.00
D89279000	Slip Gauge Set - Steel M112/1 in Grade-1 (112 Pcs set)	98,000.00
D89299000	Slip Gauge Set - Steel M83 in Grade-2 (83 Pcs set)	16,600.00
D89269000	Slip Gauge Set - Carbide M112/1 in Grade-0 (112 Pcs set)	1,65,000.00
D89289000	Slip Gauge Set - Carbide M112/1 in Grade-1 (112 Pcs set)	1,52,000.00



**ELECTRONIC PROBES**

PRODUCT CODE	DESCRIPTION	UNIT RATE ₹
E41149000	BAKER Electronic Axial Probe <b>Type 2940</b> Half-Bridge type inductive probe with 2 Mtr. Length Polyurethane Cable and with Tungsten Carbide Ball Anvil. Range : $\pm 2$ mm	13,200.00
E41219000	BAKER Electronic Axial Probe with Right Angle Cap <b>Type 2940R</b> Half-Bridge type inductive probe with 2 Mtr. Length Polyurethane Cable and with Tungsten Carbide Ball Anvil. Range : $\pm 2$ mm	13,200.00
E41229000	BAKER Electronic Vacuum Retract Axial Probe <b>Type 2940V</b> Half-Bridge type inductive probe with 2 Mtr. Length Polyurethane Cable and with Tungsten Carbide Ball Anvil. Range : $\pm 2$ mm	18,470.00
E41289000	BAKER Electronic Short Body (60mm) Axial Probe <b>Type 2910</b> Half-Bridge type inductive probe with 2 Mtr. Length Polyurethane Cable and with Tungsten Carbide Ball Anvil. Range : $\pm 1$ mm	15,860.00
E41329000	BAKER Electronic Axial Probe <b>Type 2940L</b> LVDT type inductive probe with 2 Mtr. Length Polyurethane Cable and with Tungsten Carbide Ball Anvil. Range : $\pm 2$ mm	13,200.00
E41369000	BAKER Electronic Axial Probe with Right Angle Cap <b>Type 2940RL</b> LVDT type inductive probe with 2 Mtr. Length Polyurethane Cable and with Tungsten Carbide Ball Anvil. Range : $\pm 2$ mm	13,200.00
E41349000	BAKER Electronic Vacuum Retract Axial Probe <b>Type 2940VL</b> LVDT type inductive probe with 2 Mtr. Length Polyurethane Cable and with Tungsten Carbide Ball Anvil. Range : $\pm 2$ mm	18,470.00
E41379000	BAKER Electronic Short Body (60mm) Axial Probe <b>Type 2910L</b> LVDT type inductive probe with 2 Mtr. Length Polyurethane Cable and with Tungsten Carbide Ball Anvil. Range : $\pm 1$ mm	15,860.00
E43009000	BAKER Electronic Lever Probe <b>Type 2952</b> with 2 Mtr. Length Polyurethane Cable	62,320.00
E433590003	BAKER Electronic Axial Probe <b>Type 2950</b> Half-Bridge type inductive probe with 2 Mtr. Length Polyurethane Cable and with Tungsten Carbide Ball Anvil. Range : $\pm 5$ mm	23,800.00
E41399000	BAKER Electronic Axial Probe <b>Type 2900 (Dia 6mm)</b> Half-Bridge type inductive probe with 2 Mtr. Length Polyurethane Cable and with Tungsten Carbide Ball Anvil. Range : $\pm 0.3$ mm	18,690.00
E41189000	BAKER Electronic Axial Probe Model 2920 with 2 meter cable Range : $\pm 1$ mm	13,200.00

# MASTER SETTING RINGS

NOMINAL DIAMETER RANGE						UNIT RATE ₹
MM			INCH			
Above	Upto & Including		Above	Upto & Including		
1.5	-	2.5	0.06	-	0.10	3620.00
2.5	-	5.0	0.10	-	0.20	2360.00
5.0	-	20.0	0.20	-	0.79	1610.00
20.0	-	40.0	0.79	-	1.57	1650.00
40.0	-	60.0	1.57	-	2.36	1870.00
60.0	-	80.0	2.36	-	3.15	2900.00
80.0	-	100.0	3.15	-	3.94	3940.00
100.0	-	120.0	3.94	-	4.72	4920.00
120.0	-	140.0	4.72	-	5.51	6060.00
140.0	-	150.0	5.51	-	5.90	7220.00
150.0	-	160.0	5.90	-	6.30	8750.00
160.0	-	170.0	6.30	-	6.70	10280.00
170.0	-	180.0	6.70	-	7.09	10990.00
180.0	-	190.0	7.09	-	7.48	12330.00
190.0	-	200.0	7.48	-	7.87	13110.00
200.0	-	212.0	7.87	-	8.35	16410.00
212.0	-	224.0	8.35	-	8.82	18580.00
224.0	-	236.0	8.82	-	9.29	23940.00
236.0	-	250.0	9.29	-	9.84	26280.00
250.0	-	265.0	9.84	-	10.43	32870.00
265.0	-	280.0	10.43	-	11.02	37290.00
280.0	-	300.0	11.02	-	11.81	42120.00
300.0	-	315.0	11.81	-	12.40	47750.00
315.0	-	325.0	12.40	-	12.80	58960.00
325.0	-	340.0	12.80	-	13.39	64110.00
340.0	-	350.0	13.39	-	13.78	66800.00
350.0	-	360.0	13.78	-	14.17	76090.00
360.0	-	370.0	14.17	-	14.57	96500.00
370.0	-	380.0	14.57	-	14.96	98680.00
380.0	-	390.0	14.96	-	15.35	103550.00
390.0	-	400.0	15.35	-	15.75	107770.00
400.0	-	410.0	15.75	-	16.14	123590.00
410.0	-	420.0	16.14	-	16.54	125960.00
420.0	-	430.0	16.54	-	16.93	133360.00
430.0	-	440.0	16.93	-	17.32	135820.00
440.0	-	450.0	17.32	-	17.72	140940.00
450.0	-	460.0	17.72	-	18.11	160220.00
460.0	-	470.0	18.11	-	18.50	165920.00
470.0	-	480.0	18.50	-	18.90	169610.00
480.0	-	490.0	18.90	-	19.29	182070.00
490.0	-	500.0	19.29	-	19.69	184980.00

- "Certificate of Inspection" is provided with each gauge, traceable to National/International Length Standards.
- For NABL (National Accreditation Board for Testing & Calibration Laboratories) Certification, extra charges will be applicable, which can be made available on request. For NABL Scope of Accreditation, please refer page 27 & 28

**Technical Notes :**

1. Master Setting Rings will be manufactured as per DIN - 2250C.
2. Technical supply conditions as per DIN 2239, with surface finish as per Class - I.
3. Made from Oil Hardening Non-Shrinking Gauge Steel Hardened & Tempered to 700 HV.
4. Sub-zero treated at -80° C for dimensional stability.
5. Calibrated at 20° C under Standards Room conditions.
6. Actual dimensions duly etched.

## CARBIDE MASTER SETTING RINGS

NOMINAL DIAMETER RANGE						UNIT RATE ₹
MM			INCH			
Above	Upto & Including		Above	Upto & Including		
5.0	-	10.0	0.12	-	0.39	3660.00
10.0	-	15.0	0.39	-	0.59	2930.00
15.0	-	20.0	0.59	-	0.79	2930.00
20.0	-	25.0	0.79	-	0.98	4390.00
25.0	-	32.0	0.98	-	1.26	5240.00
32.0	-	40.0	1.26	-	1.57	6460.00
40.0	-	50.0	1.57	-	1.97	6650.00
50.0	-	60.0	1.97	-	2.36	11500.00
60.0	-	70.0	2.36	-	2.76	12670.00
70.0	-	80.0	2.76	-	3.15	13840.00
80.0	-	90.0	3.15	-	3.54	15210.00
90.0	-	100.0	3.54	-	3.94	16590.00

## MASTER SETTING DISCS

NOMINAL DIAMETER RANGE						UNIT RATE ₹
MM			INCH			
Above	Upto & Including		Above	Upto & Including		
3.0	-	10.0	0.12	-	0.39	1250.00
10.0	-	24.0	0.39	-	0.95	960.00
24.0	-	40.0	0.95	-	1.58	1130.00
40.0	-	65.0	1.58	-	2.56	1300.00
65.0	-	80.0	2.56	-	3.15	1500.00
80.0	-	100.0	3.15	-	3.94	1760.00
100.0	-	120.0	3.94	-	4.72	2170.00
120.0	-	140.0	4.72	-	5.51	3100.00
140.0	-	150.0	5.51	-	5.90	4030.00
150.0	-	160.0	5.90	-	6.30	4670.00
160.0	-	175.0	6.30	-	6.89	5160.00
175.0	-	190.0	6.89	-	7.48	5910.00
190.0	-	200.0	7.48	-	7.87	6810.00

- "Certificate of Inspection" is provided with each gauge, traceable to National/International Length Standards.
- For NABL (National Accreditation Board for Testing & Calibration Laboratories) Certification, extra charges will be applicable, which can be made available on request. For NABL Scope of Accreditation, please refer page 27 & 28

#### Technical Notes :

1. The Gauge blanks will be as per ANSI-B47.1 - 1988.
2. Tolerances followed as per Class - X of ASME B89.1.5 - 1998.
3. Made from Oil Hardening Non-Shrinking Gauge Steel Hardened & Tempered to 700 HV.
4. Sub-zero treated at -80° C for dimensional stability.
5. Calibrated at 20° C under Standards Room conditions.
6. Actual dimensions duly.

#### TERMS & CONDITIONS (for products)

1. PRICE : Ex-Works, Pune.
2. PACKING & FORWARDING : EXTRA @ 3%
3. GST : Extra as applicable.
4. PAYMENT : 25% Advance alongwith order and balance against Proforma Invoice.
5. DESPATCH : Courier Service.
6. FREIGHT : Extra at Actual.
7. INSURANCE : To be arranged by you.
8. This price list is subject to alteration without any notice & cancels all our previous price lists.



# CALIBRATION CHARGES

- Calibration Charges mentioned below (Page 32 to 34) are for providing our standard Certificate of Calibration with each gauge traceable to National / International Length Standards.
- However, for providing NABL (National Accreditation Board for Testing & Calibration Laboratories) Certification (which can be made available on request), 25% extra charges will be applicable on the charges mentioned below.
- For economical transaction we need a minimum order value of Rs. 500/-. Hence for order value of less than Rs. 500/-, Handling charges of Rs. 250/- will be applicable extra.

## CALIBRATION CHARGES FOR MASTER SETTING RINGS

NOMINAL DIAMETER RANGE						UNIT RATE ₹
MM			INCH			
Above	Upto & Including		Above	Upto & Including		
1.0	-	1.5	0.04	-	0.06	460.00
1.5	-	6.0	0.06	-	0.24	330.00
6.0	-	30.0	0.24	-	1.18	310.00
30.0	-	60.0	1.18	-	2.36	430.00
60.0	-	80.0	2.36	-	3.15	550.00
80.0	-	100.0	3.15	-	3.94	660.00
100.0	-	120.0	3.94	-	4.72	730.00
120.0	-	200.0	4.72	-	7.87	910.00
200.0	-	315.0	7.87	-	12.40	1,460.00

## CALIBRATION CHARGES FOR MASTER SETTING DISCS / PLAIN PLUG GAUGES

NOMINAL DIAMETER RANGE						UNIT RATE ₹
MM			INCH			
Above	Upto & Including		Above	Upto & Including		
1.0	-	65.0	0.04	-	2.56	310.00
65.0	-	100.0	2.56	-	3.94	430.00
100.0	-	200.0	3.94	-	7.87	610.00

## CALIBRATION CHARGES FOR PLAIN TAPER GAUGES (MALE / FEMALE)

NOMINAL DIAMETER RANGE						UNIT RATE ₹
MM			INCH			
Above	Upto & Including		Above	Upto & Including		
4.0	-	25.0	0.16	-	0.98	1,460.00
25.0	-	50.0	0.98	-	1.97	2,060.00
50.0	-	75.0	1.97	-	2.95	3,030.00
75.0	-	100.0	2.95	-	3.94	3,880.00
100.0	-	120.0	3.94	-	4.72	4,480.00

- Calibration of Plain Taper Gauges will be done at two levels (Major & Minor Dias.)
- Internal taper measurement will be done upto diameter 100mm only.
- Internal taper calibration is not covered under NABL Accreditation.
- Calibration charges External / Internal Taper Gauges above size 120mm can be quoted on request.

## CALIBRATION CHARGES

### CALIBRATION CHARGES FOR ROUNDNESS MEASUREMENT (INTERNAL & EXTERNAL DIAMETERS)

NOMINAL DIAMETER RANGE						UNIT RATE ₹
MM			INCH			
Above	Upto & Including		Above	Upto & Including		
3.0	-	315.0	0.12	-	12.40	2420.00

- Maximum weight of the Master should not exceed 18 Kgs.
- Roundness will be checked at one level. If roundness is required at more than one level, charges will be 25% extra of the basic charge per level.

### CALIBRATION CHARGES FOR ROUNDNESS MASTERS

DESCRIPTION	UNIT RATE ₹
ROUNDNESS MASTERS	2420.00

### CALIBRATION CHARGES FOR SURFACE FINISH MEASUREMENT / ROUGHNESS MASTERS

DESCRIPTION	UNIT RATE ₹
ROUGHNESS MASTER (UPTO 0.006MM Ra, ONLY UNDER NABL)	1820.00 Per Surface
SURFACE ROUGHNESS MEASUREMENT	610.00 Per Parameter

### CALIBRATION CHARGES FOR DIAL GAUGES

DESCRIPTION	UNIT RATE ₹
PLUNGER TYPE DIAL GAUGES	250.00
LEVER TYPE DIAL GAUGES	490.00
DIAL BORE GAUGES ( 18 - 300 mm )	850.00
DIAL THICKNESS GAUGES	250.00

### CALIBRATION CHARGES FOR ELECTRONIC PRODUCTS

DESCRIPTION	UNIT RATE ₹
TWIN CHANNEL ELECTRONIC COMPARATOR.	2,730.00
SINGLE CHANNEL ELECTRONIC COMPARATOR.	1,820.00

### CALIBRATION CHARGES FOR DIGITAL DIAL GAUGES

DESCRIPTION	UNIT RATE ₹
DIGITAL DIAL GAUGES	
Range : 12.5 mm	610.00
Range : 25.0 mm	910.00
Range : 50.0 mm	1,210.00

### CALIBRATION CHARGES FOR DIGITAL CALIPERS / DIAL CALIPERS / VERNIER CALIPERS

DESCRIPTION	UNIT RATE ₹
DIGITAL CALIPERS / DIAL CALIPERS / VERNIER CALIPERS	
Range : 0 - 150 mm	610.00
Range : 0 - 200 mm	610.00
Range : 0 - 300 mm	730.00

# CALIBRATION CHARGES



## CALIBRATION CHARGES FOR BAKER HEIGHT GAUGES (WITH NABL ACCREDITATION CERTIFICATE)

DESCRIPTION	UNIT RATE ₹
BAKER HEIGHT GAUGES	
Baker Digital Height Gauge - Type DH 300	1050.00
Baker Digital Height Gauge - Type DH 600	1380.00
Baker Vernier Height Gauge - Type VH 300	1050.00
Baker Vernier Height Gauge - Type VH 600	1380.00

## CALIBRATION CHARGES FOR THREE POINT MICROMETERS (WITH NABL ACCREDITATION CERTIFICATE)

DESCRIPTION	UNIT RATE ₹
Range : 6 - 25 mm	1,030.00
Range : 25 - 50 mm	1,210.00
Range : 50 - 100 mm	1,460.00
Range : 100 - 200 mm	1,820.00
Range : 200 - 300 mm	3,030.00

## CALIBRATION CHARGES FOR SLIP GAUGES

DESCRIPTION	UNIT RATE ₹
SLIP GAUGE CALIBRATION RANGE 0.5 TO 100 MM (METRIC ONLY)	90.00 EACH SLIP

### TERMS & CONDITIONS (for services)

1. PRICE : Ex-Works, Pune.
2. PACKING & FORWARDING : Extra as applicable.
3. DESPATCH : Courier Service / Speed Post.
4. FREIGHT : Extra at Actual.
5. GST : Extra as applicable.
6. PAYMENT : Full payment to be made along with order / against proforma Invoice.
7. INSURANCE : To be arranged by you.
8. This price list is subject to alteration without any notice & cancels all our previous price lists.



# BAKER GAUGES INDIA PRIVATE LIMITED

HEAD OFFICE & FACTORY

37 - 40, NAGAR ROAD, PUNE - 411 014

☎ : 020 - 66250 600 FAX : 020 - 66250 786

E-mail : bakerhip@bakergauges.com

Website : www.bakergauges.com

HIP DIVISION

## BAKER

*...a passion for precision*



## HIP DIVISION PRICE LIST

Page Nos. 45 to 78



DESCRIPTION	PAGE NO.
ISO METRIC THREAD GAUGES	45 - 48
SET OF METRIC THREAD GAUGES (M3 - M12)	49
UNIFIED THREAD GAUGES	50 - 52
ISO PARALLEL PIPE THREAD GAUGES (BSP)	53
BSPT TAPER THREAD GAUGES	53
FORM (B.S. CYCLE SCREW GAUGE)	54
SCREW GAUGE (BSW/BSF)	54
B.A. SCREW GAUGE	55
THREAD DEPTH GAUGE	55
3/4 NGT, ISO 7R & NPT CORE TAPER THREAD GAUGES	56
NPT TAPER THREAD GAUGES	57
NPTF TAPER THREAD GAUGES	57
ANPT TAPER THREAD GAUGES	57
EXTERNAL MICROMETERS	58 - 59
MICROMETERS WITH INTERCHANGEABLE ANVILS	58 - 59
EXTERNAL MICROMETER WITH ADD ON EXTENSION ANVIL	58 - 59
MICROMETER HEADS	58 - 59
DEPTH MICROMETERS	58 - 59
SETS OF MECHANICAL MICROMETERS	60
SETS OF DIGITAL MICROMETERS	60
DIGITAL EXTERNAL MICROMETERS WITH / WITHOUT DATA OUTPUT	60
SPECIAL EXTERNAL MICROMETERS	61 - 62
BLADE MICROMETERS	63
TUBULAR MICROMETERS	63
SETTING GAUGES FOR EXTERNAL MICROMETERS	63
SPARES FOR MECHANICAL & DIGITAL MICROMETERS	64
DIGITAL MICROMETERS SPARES	65
TERMS & CONDITIONS (for products)	65
CALIBRATION - THREAD GAUGES & PLAIN GAUGES	66
CALIBRATION - MECHANICAL EXTERNAL MICROMETERS	67
CALIBRATION - DIGITAL EXTERNAL MICROMETERS	67
TERMS & CONDITIONS (for services)	67
CALIBRATION SERVICES	68
ISO 9001 QMS CERTIFICATE	69
NABL CERTIFICATE OF ACCREDITATION	70
NABL SCOPE OF ACCREDITATION	71 - 78

**Note:**

We manufacture all types of special thread gauges like ACME / STUB ACME / TRAPEZOIDAL / BUTTRESS / ROUND / Pg & Specials made to drawings.

# ISO METRIC THREAD GAUGES

## I. INDIAN STANDARD (IS)

BASIC DIMENSIONS : IS 4218 PART III : 1999  
IS 4218 PART IV : 2001

GAUGING PRACTICE : IS 2334 : 2001

## II. INTERNATIONAL ORGANIZATION FOR STANDARDIZATION (ISO)

BASIC DIMENSIONS : ISO 724 :1993  
: ISO 965-1 : 2013

GAUGING PRACTICE : ISO 1502 : 1996

RIGHT HAND		THREAD PLUGS D/E GO & NOT GO	THREAD RINGS GO OR NOT GO	WCP GO OR NOT GO	RIGHT HAND		THREAD PLUGS D/E GO & NOT GO	THREAD RINGS GO OR NOT GO	WCP GO OR NOT GO		
NOMINAL DIAMETER	PITCH	CLASS 6H ₹	CLASS 6g ₹	CLASS 6g ₹	NOMINAL DIAMETER	PITCH	CLASS 6H ₹	CLASS 6g ₹	CLASS 6g ₹		
1	0.25	5H 3155	6h 10760	3945	8	1.25 1.0 0.75 0.50	1615 1615 2355 3555	1745 1745 2590 5170	2010 2010 2940 4445		
1.1	0.25	5H 3155	6h 10760	3945	9	1.25 1.0 0.75 0.50	1630 1630 2355 3555	1745 1745 2590 5170	2010 2010 2940 4445		
1.2	0.25	5H 3155	6h 10760	3945		10	1.5 1.25 1.0 0.75 0.50	1650 1615 1615 2355 3555	1795 1745 1745 2590 5170	2060 2010 2010 2940 4445	
1.4	0.30	5H 2560	6h 10760	4365			11	1.5 1.0 0.75	1650 1615 2355	1795 1745 2590	2315 2260 3295
1.6	0.35	2560	6125	3195	12			1.75 1.5 1.25 1.0 0.75 0.50	1650 1650 1615 1615 2355 3555	1795 1795 1745 1745 2590 5170	2315 2315 2260 2260 3295 4445
1.8	0.35	2560	6125	3195				13	1.5 1.0	2575 2575	3730 3730
2	0.4 0.25	1685 2510	2835 4050	2105 3135		14	2.0 1.5 1.25 1.0 0.75		2210 1860 1860 1860 2775	3060 1985 1985 1985 3930	3090 2605 2605 2605 3865
2.2	0.45 0.25	1685 2530	2835 4050	2105 3135			15	1.5 1.0	2335 2335	2575 2575	3275 3275
2.3	0.4	2090	2835	2615	16			2.0 1.5 1 1.25 0.75	2210 1860 1860 2775 4630	3060 1985 1985 3930 5895	3090 2605 2605 3865 6490
2.5	0.45 0.35	1685 2530	2230 3370	2105 3135		17	1.5 1.0	2510 2510	3180 3180	3525 3525	
2.6	0.45	2090	2835	2615			18	2.5 2.0 1.5 1.0	2970 2510 2325 2325	3395 3300 2970 2970	4155 3525 3260 3260
3	0.5 0.35	1615 2355	1745 2590	2010 2940		19		1.5 1.0	3215 3215	4415 4415	4505 4505
3.5	0.6 0.35	1615 2355	1745 2590	2010 2940	20			2.5 2.0 1.5 1.0	2970 2510 2325 2325	4320 4210 2970 2970	4155 3525 3260 3260
4	0.7 0.75 0.5	1615 2355 2355	1745 2590 2590	2010 2940 2940							
4.5	0.75 0.5	1615 2355	1745 2590	2010 2940							
5	0.80 0.75 0.50	1615 2355 2355	1745 2590 2590	2010 2940 2940							
5.5	0.50	2355	2590	2940							
6	1.0 0.75 0.50	1615 2355 3555	1745 2590 5170	2010 2940 4445							
7	1.0 0.75 0.50	1615 2355 3555	1745 2590 5170	2010 2940 4445							



# ISO METRIC THREAD GAUGES

**BAKER**  
...A PASSION FOR PRECISION

RIGHT HAND		THREAD PLUGS D/E GO & NOT GO	THREAD RINGS GO OR NOT GO	WCP GO OR NOT GO	RIGHT HAND		THREAD PLUGS D/E GO & NOT GO	THREAD RINGS GO OR NOT GO
NOMINAL DIAMETER	PITCH	CLASS 6H ₹	CLASS 6g ₹	CLASS 6g ₹	NOMINAL DIAMETER	PITCH	CLASS 6H ₹	CLASS 6g ₹
21	1.5	3215	5645	4505	40	3.0	5090	6315
	1.0	3215	5645	4505		2.0	4100	5425
22	2.5	2970	4320	4155	42	1.5	3780	5325
	2.0	2510	4210	3525		1.0	5655	7820
	1.5	2325	2970	3260		4.5	7285	8245
24	1.0	2325	2970	3260	45	4.0	7285	7570
	3.0	2970	4530	4155		3.0	6140	7570
	2.0	2510	4210	3525		2.0	4710	6795
	1.5	2325	3485	3260		1.5	4330	6520
25	1.0	2325	3485	3260	48	1.0	6465	9750
	2.0	3045	4590	4175		4.5	7285	8245
	1.5	2795	4070	3845		4.0	7285	7570
26	1.0	2795	4070	3845	50	3.0	6140	7570
	1.5	3125	4070	6140		2.0	4710	6795
27	1.0	3125	6140		55	1.5	4330	6520
	3.0	4125	5645			1.0	6465	9750
	2.0	3385	4620			5.0	8520	9415
	1.5	3125	4070			4.0	7285	7570
28	1.0	3125	4070		56	3.0	6140	7570
	2.0	3385	4620			2.0	4710	6795
	1.5	3125	4070			1.5	4330	6520
29	1.0	4660	6140		58	1.0	6465	9750
	1.5	4660	6140			4.0	4940	10140
30	3.5	6115	6315		60	3.0	3845	9695
	3.0	5090	6315			2.0	2955	8665
	2.0	4100	5425			1.5	2735	8315
	1.5	3780	5215			5.5	4940	11000
	1.0	4685	6520			4.0	4940	10140
32	2.0	4100	5425		62	3.0	3845	9695
	1.5	3780	5215			2.0	2955	8665
	1.0	5655	7820			1.5	2735	8315
	4.0	6115	6315			4.0	4940	10140
33	3.0	5090	6315		64	3.0	3845	9695
	2.0	4100	5425			2.0	2955	8665
34	1.5	3780	5325		66	1.5	2735	8315
	1.0	5655	7820			5.5	4940	11000
	4.0	6115	6315			4.0	4940	10140
35	3.0	5090	6315		68	3.0	3845	9695
	2.0	4100	5425			2.0	2955	8665
	1.5	3780	5325			1.5	2735	8315
	1.0	5655	7820			4.0	4940	10140
36	1.0	5655	7820		70	3.0	3845	9695
	4.0	6115	6315			2.0	2955	8665
	3.0	5090	6315			1.5	2735	8315
38	2.0	4100	5425		72	5.5	4940	11000
	1.5	3780	5325			4.0	4940	10140
	1.0	5655	7820			3.0	3845	9695
	4.0	6115	6315			2.0	2955	8665
39	3.0	5090	6315		74	1.5	2735	8315
	2.0	4100	5425			4.0	4940	10140
	1.5	3780	5325			3.0	3845	9695
	1.0	5655	7820			2.0	2955	8665

## ISO METRIC THREAD GAUGES

RIGHT HAND		THREAD PLUGS S/E GO OR NOT GO	THREAD RINGS GO OR NOT GO	RIGHT HAND		THREAD PLUGS S/E GO OR NOT GO	THREAD RINGS GO OR NOT GO		
NOMINAL DIAMETER	PITCH	CLASS 6H ₹	CLASS 6g ₹	NOMINAL DIAMETER	PITCH	CLASS 6H ₹	CLASS 6g ₹		
64	6.0	5710	11855	95	6.0	8645	19345		
	4.0	4940	10140		4.0	7315	15760		
	3.0	3845	9695		3.0	5875	15095		
	2.0	2955	8665		2.0	4495	13505		
	1.5	2735	8315		1.5	4145	12935		
65	4.0	4940	10140	100	6.0	8645	19345		
	3.0	3845	9695		4.0	7315	15760		
	2.0	2955	8665		3.0	5875	15095		
	1.5	2735	8315		2.0	4495	13505		
68	6.0	5985	13385	105	6.0	11325	25100		
	4.0	5160	11535		4.0	8425	21080		
	3.0	4040	9695		3.0	8015	20145		
	2.0	3070	8665		2.0	5705	16390		
	1.5	2830	8315		1.5	5480	15740		
70	6.0	5985	13385	110	6.0	11325	25100		
	4.0	5160	11535		4.0	8425	21080		
	3.0	4040	9695		3.0	8015	20145		
	2.0	3070	8665		2.0	5705	16390		
	1.5	2830	8315		1.5	5480	15740		
72	6.0	5985	13385	115	6.0	11325	25100		
	4.0	5160	11535		4.0	8425	21080		
	3.0	4040	9695		3.0	8015	20145		
	2.0	3070	8665		2.0	5705	16390		
	1.5	2830	8315		1.5	5480	15740		
75	4.0	5160	11535	120	6.0	11515	25680		
	3.0	4040	9695		4.0	8865	23220		
	2.0	3070	8665		3.0	8660	22195		
	1.5	2830	8315		2.0	5985	18060		
					1.5	6145	17295		
76	6.0	7190	16100	125	6.0	11515	25680		
	4.0	6180	12660		4.0	8865	23220		
	3.0	4915	12090		3.0	8660	22195		
	2.0	3725	10805		2.0	5985	18060		
	1.5	3430	10350		1.5	6145	17295		
78	2.0	3725	10805	130	6.0	11515	25680		
	1.5	3430	10350		4.0	8865	23220		
80	6.0	7190	16100	135	3.0	8660	22195		
	4.0	6180	12660		2.0	5985	18060		
	3.0	4915	12090		1.5	6145	17295		
	2.0	3725	10805		140	6.0	15055	33710	
	1.5	3430	10350			4.0	10050	26615	
82	2.0	3725	10805	145	3.0	9565	25455		
	1.5	3430	10350		2.0	7335	19905		
					1.5	7015	19075		
	85	6.0	7190		16100	140	6.0	15055	33710
		4.0	6180		12660		4.0	10050	26615
3.0		4915	12090	3.0	9565		25455		
2.0		3725	10805	2.0	7335		19905		
1.5		3430	10350	1.5	7015		19075		
90	6.0	8645	19345	145	6.0	15055	33710		
	4.0	7315	15760		4.0	10050	26615		
	3.0	5875	15095		3.0	9565	25455		
	2.0	4495	13505		2.0	7335	19905		
	1.5	4145	12935		1.5	7015	19075		

# ISO METRIC THREAD GAUGES



RIGHT HAND		THREAD PLUGS S/E GO OR NOT GO	THREAD RINGS GO OR NOT GO	RIGHT HAND		THREAD PLUGS S/E GO OR NOT GO	THREAD RINGS GO OR NOT GO
NOMINAL DIAMETER	PITCH	CLASS 6H ₹	CLASS 6g ₹	NOMINAL DIAMETER	PITCH	CLASS 6H ₹	CLASS 6g ₹
150	6.0	18580	41575	180	6.0	22880	51245
	4.0	12390	28315		4.0	17005	34185
	3.0	12390	27100		3.0	17005	34185
	2.0	9490	21805		2.0	13010	29120
	1.5	9100	20900		1.5	12455	27880
155	6.0	18580	41575	185	6.0	22880	51245
	4.0	12390	28315		4.0	17005	34185
	3.0	12390	27100		3.0	17005	34185
	2.0	10260	21805		2.0	13010	29120
	1.5	9840	20900		1.5	12455	27880
160	6.0	18580	41575	190	6.0	22880	51245
	4.0	12390	28315		4.0	17005	34185
	3.0	12390	27100		3.0	17005	34185
	2.0	10260	21805		2.0	13010	29120
	1.5	9840	20900		1.5	12455	27880
165	6.0	21130	47310	195	6.0	27995	62700
	4.0	15095	31110		4.0	19560	43805
	3.0	14735	29755		3.0	19560	43805
	2.0	11285	23275		2.0	14995	33565
	1.5	10810	22260		1.5	14350	32130
170	6.0	21130	47310	200	6.0	27995	62700
	4.0	15095	31110		4.0	19560	43805
	3.0	14735	29755		3.0	19560	43805
	2.0	11285	23275		2.0	14995	33565
	1.5	10810	22260		1.5	14350	32130
175	6.0	21130	47310	Prices for above 200 mm & specials on request			
	4.0	15095	31110				
	3.0	14735	29755				
	2.0	11285	23275				
	1.5	10810	22260				



**SET OF THREAD PLUGS GAUGES IN ONE BOX CONSISTING OF M3, M4, M5, M6, M8, M10, M12 - 6H CLASS OF FIT DOUBLE END THREAD PLUG GAUGES.**

**PRICE : Rs. 11880/- PER BOX.**



**SET OF "GO" THREAD RINGS GAUGES IN ONE BOX CONSISTING OF M3, M4, M5, M6, M8, M10, M12 - 6g CLASS OF FIT "GO" THREAD RING GAUGES.**

**PRICE : Rs. 12820/- PER BOX.**



**SET OF "NOT GO" THREAD RINGS GAUGES IN ONE BOX CONSISTING OF M3, M4, M5, M6, M8, M10, M12 - 6g CLASS OF FIT "NOT GO" THREAD RING GAUGES.**

**PRICE : Rs. 12820/- PER BOX.**

**NOTES:**

**I] THREAD PLUGS**

- 1 PRICE FOR DIAMETER 0.50 mm TO 0.90 mm ON REQUEST.
- 2 FOR SIZES 1 mm TO 1.4 mm AS PER SPECIFICATION STANDARD CLASS RECOMMENDED IS 5H/6H.
- 3 PRICE FOR THREAD PLUG OTHER THAN 6H CLASS, ADD 25% ON 6H THREAD PLUG.
- 4 PRICE FOR LEFT HAND THREAD PLUG, ADD 50% ON RIGHT HAND THREAD PLUG.
- 5 PRICE FOR NON-STANDARD DIAMETER-PITCH COMBINATIONS AND DIAMETERS ABOVE 200 mm ON REQUEST.

**II] THREAD RINGS**

- 1 PRICE FOR DIAMETER 0.50 mm TO 0.90 mm ON REQUEST.
- 2 PRICE FOR THREAD RING OTHER THAN 6g CLASS, DIAMETER UPTO AND INCLUDING 24 mm ADD 40% ON 6g THREAD RING.
- 3 PRICE FOR THREAD RING OTHER THAN 6g CLASS, DIAMETER ABOVE 24 mm ADD 25% ON 6g THREAD RING.
- 4 PRICE FOR LEFT HAND THREAD RING GAUGE ADD 50% ON RIGHT HAND THREAD RING GAUGE.
- 5 PRICE FOR NON-STANDARD DIAMETER-PITCH COMBINATIONS AND DIAMETERS ABOVE 200 mm ON REQUEST.

**III] CERTIFICATE OF INSPECTION SUPPLIED WITH EACH GAUGE, TRACEABLE TO NATIONAL LENGTH STANDARDS.**

# UNIFIED THREAD GAUGES



**AMERICAN STANDARD**  
GAUGING PRACTICE : ANSI / ASME B1.2 - 1983

RIGHT HAND		THREAD PLUGS D/E GO & NOT GO	THREAD RINGS GO OR NOT GO	WCP GO OR NOT GO	RIGHT HAND		THREAD PLUGS D/E GO & NOT GO	THREAD RINGS GO OR NOT GO	WCP GO OR NOT GO
NOMINAL DIAMETER	THREADS PER INCH	CLASS 2B ₹	CLASS 2A ₹	CLASS 2A ₹	NOMINAL DIAMETER	THREADS PER INCH	CLASS 2B ₹	CLASS 2A ₹	CLASS 2A ₹
No. 0	80 UNF	5735	8830	7170	3/4	10 UNC	3265	4365	4565
No. 1	64 UNC	4865	8105	6085		16 UNF	2775	2930	3875
	72 UNF	4865	8105	6085		12 UN	4170	5845	5840
No. 2	56 UNC	3225	5200	4040	18 UNEF	4170	6875	5840	
	64 UNF	4040	7860	5045	20 UNEF	4170	6875	5840	
No. 3	48 UNC	3225	4170	4040	13/16	12 UN	4170	5845	5840
	56 UNF	4040	6245	5045		16 UN	4170	6875	5840
No. 4	40 UNC	1685	2205	2105		18 UNEF	4170	6875	5840
	48 UNF	1685	2205	2105	20 UNEF	4170	6875	5840	
No. 5	40 UNC	1920	2510	2400	7/8	9 UNC	4415	7260	6190
No. 6	32 UNC	1920	2510	2400		14 UNF	2775	2930	3875
	40 UNF	1920	2510	2400		12 UN	4170	6875	5840
No. 8	32 UNC	1920	2510	2400	16 UN	4170	6875	5840	
	36 UNF	1920	2510	2400	18 UNEF	4170	6875	5840	
No. 10	24 UNC	1920	2510	2400	15/16	20 UNEF	4170	6875	5840
	32 UNF	1920	2510	2400		12 UN	4170	6875	5840
No. 12	24 UNC	1920	2510	2400		16 UN	4170	6875	5840
	28 UNF	1920	2510	2400	18 UNEF	4170	6875	5840	
1/4	20 UNC	1920	2510	2400	1	8 UNC	4415	7260	6190
	28 UNF	1920	2510	2400		12 UNF	2775	5760	6110
	32 UNEF	2835	5015	3540		14 UNS	4170	6875	5840
5/16	18 UNC	1920	2510	2400	16 UN	4170	6875	5840	
	24 UNF	1920	2510	2400	18 UNEF	4170	6875	5840	
	32 UNEF	2835	5015	3540	20 UNEF	4170	6875	5840	
3/8	16 UNC	1920	2510	2400	1.1/16	8 UN	7205	10095	
	24 UNF	1920	2510	2400		12 UN	4015	6270	
	32 UNEF	2835	5015	3540		16 UN	4540	7480	
7/16	16 UNC	1985	2760	2780	18 UNEF	6860	10055		
	24 UNF	1920	2510	2400	20 UN	6860	10055		
	32 UNEF	2835	5015	3540					
1/2	13 UNC	1985	2760	2780	1.1/8	7 UNC	7205	10095	
	20 UNF	1920	2510	2400		8 UN	7205	10095	
	28 UNEF	2835	5015	3540		12 UNF	4015	6270	
9/16	12 UNC	2210	4265	3100	16 UN	4540	7480		
	18 UNF	2210	2930	3100	18 UNEF	6860	10055		
	20 UN	3300	5845	4615	20 UN	6860	10055		
5/8	20 UNEF	3300	5845	4615	1.3/16	8 UN	7205	10095	
	11 UNC	3265	4365	4565		12 UN	4540	6270	
	18 UNF	2775	2930	3875		16 UN	4540	7480	
11/16	20 UN	4170	5845	5840	18 UNEF	6860	10055		
	24 UNEF	4170	5845	5840	20 UN	6860	10055		
	12 UN	4170	5845	5840					
11/16	16 UN	4170	5845	5840	1.1/4	7 UNC	7205	10095	
	18 UN	4170	6875	5840		8 UN	7205	10095	
	20 UN	4170	6875	5840		12 UNF	4540	6270	
	24 UNEF	4170	6875	5840		16 UN	4540	7480	
11/16	16 UN	4170	5845	5840	18 UNEF	6860	10055		
	18 UN	4170	6875	5840	20 UN	6860	10055		
	20 UN	4170	6875	5840					
	24 UNEF	4170	6875	5840					

# UNIFIED THREAD GAUGES

RIGHT HAND		THREAD PLUGS D/E GO & NOT GO	THREAD RINGS GO OR NOT GO	RIGHT HAND		THREAD PLUGS S/E GO OR NOT GO	THREAD RINGS GO OR NOT GO		
NOMINAL DIAMETER	THREADS PER INCH	CLASS 2B ₹	CLASS 2A ₹	NOMINAL DIAMETER	THREADS PER INCH	CLASS 2B ₹	CLASS 2A ₹		
1.3/8	6 UNC	7205	10095	2.1/2	4 UNC	6775	16060		
	8 UN	7205	10095		8 UN	5680	13385		
	12 UNF	4540	6270		12 UN	3810	9595		
	16 UN	4540	7480		16 UN	3810	9595		
	18 UNEF	6860	10055		2.5/8	8 UN	5680	13385	
20 UN	6860	10055	12 UN	3810		9595			
1.7/16	6 UN	7205	10095	16 UN		3810	9595		
	8 UN	7205	10095	2.3/4		4 UNC	6775	16060	
	12 UN	4540	6270			8 UN	5680	13385	
	16 UN	4540	7480		12 UN	3810	9595		
	18 UNEF	6860	10055		16 UN	3810	9595		
20 UN	6860	10055	1.1/2		6 UN	7205	10095		
8 UN	7205	10095		8 UN	7205	10095			
12 UN	4540	6270		12 UN	4540	6270			
16 UN	4540	7480		16 UN	4540	7480			
18 UNEF	6860	10055		18 UNEF	6860	10055			
20 UN	6860	10055	20 UN	6860	10055	2.7/8	8 UN	5680	13385
1.9/16	6 UN	8510	10990	12 UN	3810		9595		
	8 UN	8510	10990	16 UN	3810		9595		
	12 UN	6335	6870	3	4 UNC		8495	20045	
	16 UN	6335	7480		8 UN		7160	16770	
	18 UNEF	7825	10300		12 UN	4805	11980		
20 UN	7825	10300	16 UN		4805	11980			
1.5/8	8 UN	8510	10990		3.1/4	4 UNC	8495	20045	
	12 UN	6335	6870	8 UN		7160	16770		
	16 UN	6335	7480	12 UN		4805	11980		
	18 UNEF	7825	10300	16 UN		4805	11980		
	20 UN	7825	10300	3.1/2		4 UNC	10755	25105	
1.3/4	5 UNC	10285	13690		8 UN	8985	20975		
	8 UN	8510	10990		12 UN	6025	15015		
	12 UN	6335	6870		16 UN	6025	15015		
	16 UN	6335	7480		3.3/4	4 UNC	10755	25105	
	20 UN	7825	10300	8 UN		8985	20975		
1.7/8	8 UN	8510	10990	12 UN		6025	15015		
	12 UN	6335	6870	16 UN		6025	15015		
	16 UN	6335	7480	4		4 UNC	11150	26030	
	20 UN	7825	10300		8 UN	9310	21750		
	RIGHT HAND	THREAD PLUGS S/E GO OR NOT GO			THREAD RINGS GO OR NOT GO		12 UN	6255	15580
NOMINAL DIAMETER		THREADS PER INCH	CLASS 2B ₹		CLASS 2A ₹	16 UN	6255	15580	
2		4.5 UN	5410		13690	4.1/4	4 UNC	13445	30110
		8 UN	4470	10990	8 UN		9605	24175	
		12 UN	3175	6870	12 UN		6855	19680	
	16 UN	3175	7480	16 UN	6855		19680		
	20 UN	3925	10300	4.1/2	4 UNC		13445	30110	
2.1/4	4.5 UN	6775	16060		8 UN	9605	24175		
	8 UN	5680	13385		12 UN	6855	19680		
	12 UN	3810	9595		16 UN	6855	19680		
	16 UN	3810	9595		4.3/4	4 UNC	13445	30820	
	2.3/8	8 UN	5680	13385		8 UN	9605	26665	
12 UN		3810	9595	12 UN		6855	21650		
16 UN		3810	9595	16 UN		6855	21650		
5		4 UNC	13445	30820		8 UN	9605	26665	
		8 UN	9605	26665	12 UN	6855	21650		
	12 UN	6855	21650	16 UN	6855	21650			
	16 UN	6855	21650	RIGHT HAND	THREAD PLUGS S/E GO OR NOT GO		THREAD RINGS GO OR NOT GO		
	20 UN	6855	21650		NOMINAL DIAMETER	THREADS PER INCH	CLASS 2B ₹	CLASS 2A ₹	



# UNIFIED THREAD GAUGES



RIGHT HAND		THREAD PLUGS S/E GO OR NOT GO	THREAD RINGS GO OR NOT GO	RIGHT HAND		THREAD PLUGS S/E GO OR NOT GO	THREAD RINGS GO OR NOT GO
NOMINAL DIAMETER	THREADS PER INCH	CLASS 2B ₹	CLASS 2A ₹	NOMINAL DIAMETER	THREADS PER INCH	CLASS 2B ₹	CLASS 2A ₹
5.1/4	4 UNC	18065	40440	5.3/4	4 UNC	22415	49905
	8 UN	11480	30555		8 UN	14860	32505
	12 UN	9605	23880		12 UN	11385	26160
	16 UN	8425	22890		16 UN	10905	25070
5.1/2	4 UNC	18065	40440	6	4 UNC	22415	49905
	8 UN	11480	30555		8 UN	14860	32505
	12 UN	9605	23880		12 UN	11385	26160
	16 UN	8425	22890		16 UN	10905	25070

Prices for above 6" & specials on request

**NOTES:**

**I] THREAD PLUGS**

- 1 PRICE FOR THREAD PLUG OTHER THAN 2B CLASS, ADD 25% ON 2B THREAD PLUG.
- 2 PRICE FOR LEFT HAND THREAD PLUG, ADD 50% ON RIGHT HAND.
- 3 PRICE FOR NON-STANDARD DIAMETER-TPI COMBINATIONS AND DIAMETERS ABOVE 6" ON REQUEST.

**II] THREAD RINGS**

- 1 PRICE FOR THREAD RING OTHER THAN 2A CLASS, DIAMETER UPTO AND INCLUDING 1" ADD 40% ON 2A THREAD RING.
- 2 PRICE FOR THREAD RING OTHER THAN 2A CLASS, DIAMETER ABOVE 1" ADD 25% ON 2A THREAD RING.
- 3 PRICE FOR LEFT HAND THREAD RING, ADD 50% ON RIGHT HAND THREAD RING GAUGES.
- 4 PRICE FOR NON-STANDARD DIAMETER-TPI COMBINATIONS AND DIAMETERS ABOVE 6" ON REQUEST.

**III] CERTIFICATE OF INSPECTION IS SUPPLIED WITH EACH GAUGE, TRACEABLE TO NATIONAL LENGTH STANDARDS.**

## ISO PARALLEL PIPE THREAD GAUGES (BSP)

**I. INDIAN STANDARD (IS)**

BASIC DIMENSIONS : IS 2643 : 2005  
GAUGING PRACTICE : IS 10216 :1988

**II. INTERNATIONAL ORGANIZATION FOR STANDARDIZATION (ISO)**

BASIC DIMENSIONS : ISO 228-1:2000  
GAUGING PRACTICE : ISO 228-2:1987

RIGHT HAND		THREAD PLUGS D/E GO & NOT GO	THREAD RINGS GO OR NOT GO	WCP GO OR NOT GO	THREAD RINGS NOT GO
NOMINAL DIAMETER	THREADS PER INCH	CLASS GENERAL ₹	CLASS B ₹	CLASS B ₹	CLASS A ₹
G 1/16	28	2100	3415	2625	5125
G 1/8	28	2100	3415	2625	5125
G 1/4	19	2100	3415	2940	5125
G 3/8	19	2100	3415	2940	5125
G 1/2	14	2645	5015	3705	7525
G 5/8	14	2645	5015	3705	6270
G 3/4	14	2645	5015	3705	6270
G 7/8	14	2690	5105	3775	6385
G 1	11	4620	7290		9115
G 1.1/8	11	4620	7290		9115
G 1.1/4	11	4620	7290		9115
G 1.3/8	11	4620	7290		9115
G 1.1/2	11	4620	7290		9115

RIGHT HAND		THREAD PLUGS D/E GO & NOT GO	THREAD RINGS GO OR NOT GO		THREAD RINGS NOT GO
NOMINAL DIAMETER	THREADS PER INCH	CLASS GENERAL ₹	CLASS B ₹		CLASS A ₹
G 1.3/4	11	2715	8670		10840
G 2	11	2715	9150		11440
G 2.1/4	11	3010	9150		11440
G 2.1/2	11	3010	9150		11440
G 2.3/4	11	3750	11455		14320
G 3	11	3750	11455		14320
G 3.1/2	11	4665	14350		17940
G 4 - 11	11	4665	14350		17940
G 5 - 11	11	6855	18255		22820
G 6 - 11	11	10270	22800		28500

**NOTES:**

**I] THREAD PLUGS**

1. PRICE FOR LEFT HAND THREAD PLUG, ADD 50% ON RIGHT HAND THREAD PLUG

**II] THREAD RINGS**

- PRICE FOR NOT GO THREAD RING OF CLASS-A, DIAMETER UPTO AND INCLUDING G1/2" ADD 50% ON CLASS B THREAD RING.
- PRICE FOR NOT GO THREAD RING OF CLASS-A, ADD 25% ON CLASS B ABOVE G1/2" THREAD RING.
- PRICE FOR LEFT HAND THREAD RING, ADD 50% ON RIGHT HAND THREAD RING

**III] CERTIFICATE OF INSPECTION IS SUPPLIED WITH EACH GAUGE, TRACEABLE TO NATIONAL LENGTH STANDARDS.**

## BSPT TAPER THREAD GAUGES

**BASIC DIMENSIONS & GAUGING PRACTICE**

BS 21 - 1985

NOMINAL DIAMETER	THREADS PER INCH	PLUGS SYSTEM - B ₹	RINGS SYSTEM - B ₹
1/16	28	6605	11650
1/8	28	6605	10900
1/4	19	5325	10175
3/8	19	5325	8720
1/2	14	5325	6910
3/4	14	5325	6910
1	11	7555	10030
1.1/4	11	7555	10030
1.1/2	11	7555	10030
2	11	11275	12525
2.1/2	11	11545	12525
3	11	11545	12525
4	11	17380	18795
5	11	19875	21580
6	11	19875	21580

**NOTE: DETAILED CERTIFICATE OF INSPECTION IS SUPPLIED WITH EACH GAUGE, TRACEABLE TO NATIONAL LENGTH STANDARDS.**

# BRITISH STANDARD WITHWORTH THREAD GAUGES



## FORM (B.S. CYCLE SCREW GAUGE)

Basic Dimensions : B.S. 84-1956  
Gauging Practices : B.S. 919 PART - II. 1971  
CLASS OF FIT : MEDIUM

NOMINAL DIAMETER	THREADS PER INCH	BAKES GAUGES THREAD PLUGS D/E GO & NOT GO CLASS MEDIUM ₹	BAKES GAUGES THREAD RINGS GO OR NOT GO PRICE IN RS EACH CLASS MEDIUM ₹
9 SWG	40	5040	8580
10 SWG	40	5040	8580
11 SWG	44	5040	8580
12 SWG	56	5340	9295
14 SWG	56	5340	9295
7/32"	26	3390	4940
1/4"	26	3390	4940
9/32"	26	3390	4940
5/16"	26	3390	4940
3/8"	26	3390	4940
7/16"	26	3390	4940
1/2"	26	3390	4940
9/16"	26	3840	6695
5/8"	26	3840	6695
11/16"	26	3840	6695
3/4"	26	4020	6955
1"	26	4020	7345
1 1/4"	26	4950	7670
1 1/2"	26	4950	7670
1 3/4"	26	6420	9815
1"	24	3840	6955
1.37	24 RH	4380	7670
1.371	24 LH	5700	9945
1.555 (38.50 MM)	24 RH	6060	8350
1.555 (38.50 MM)	24 LH	7860	10920

## SCREW GAUGE (BSW/BSF)

Basic Dimensions : B.S. 84-1956  
Gauging Practices : B.S. 919 PART - II. 1971  
CLASS OF FIT : MEDIUM

NOMINAL DIAMETER	THREADS PER INCH	BAKES GAUGES THREAD PLUGS D/E GO & NOT GO CLASS MEDIUM ₹	BAKES GAUGES THREAD RINGS GO OR NOT GO PRICE IN RS EACH CLASS MEDIUM ₹
1/8"	40 BSW	5580	7215
3/16"	26 BSW	3480	7215
	32 BSF	3480	4840
1/4"	20 BSW	3480	4840
	26 BSF	3480	4840
5/16"	18 BSW	3480	4840
	22 BSF	3480	4840
3/8"	16 BSW	3480	4840
	20 BSF	3480	4840
7/16"	14 BSW	3480	4840
	18 BSF	3480	4840
1/2"	12 BSW	3480	4840
	16 BSF	3480	4840
9/16"	12 BSW	3480	4840
	16 BSF	3480	4840
5/8"	11 BSW	3480	3770
	14 BSF	3480	3770
3/4"	10 BSW	6390	6920
	12 BSF	4380	4745
7/8"	9 BSW	6390	6920
	11 BSF	5280	5720
1"	8 BSW	6660	7215
	10 BSF	6660	7215
1.1/8"	7 BSW	13395	13865
	9 BSF	13395	13865
1.1/4"	7 BSW	13395	13865
	9 BSF	13395	13865
1.1/2"	6 BSW	13395	13865
	8 BSF	13395	13865



**B.A. SCREW GAUGE**

Basic Dimensions : B.S. 93-1951  
 Gauging Practices : B.S. 919 PART - II. 1971  
 CLASS OF FIT : NORMAL

NOMINAL DIAMETER	THREADS PER INCH	BAKES GAUGES THREAD PLUGS D/E GO & NOT GO CLASS MEDIUM ₹	BAKES GAUGES THREAD RINGS GO OR NOT GO PRICE IN RS EACH CLASS MEDIUM ₹
NO 0 B.A.	-	5740	7080
NO 1 B.A.	-	5740	7080
NO 2 B.A.	-	5740	7080
NO 3 B.A.	-	5740	7080
NO 4 B.A.	-	5740	7080
NO 5 B.A.	-	5740	7080
NO 6 B.A.	-	6840	10560
NO 7 B.A.	-	6840	10970
NO 8 B.A.	-	8310	12640
NO 9 B.A.	-	11255	18010
NO 10 B.A.	-	11255	18010
NO 11 B.A.	-	11255	18010
NO 12 B.A.	-	11255	18010

**THREAD DEPTH GAUGE**


TYPE	THREAD DEPTH GAUGE SIZE	MEASURING DEPTH	PRICE ₹
BDG 03	M4 X 0.7-6H THREAD DEPTH GAUGE	20 mm	14850
BDG 03	M5 X 0.8-6H THREAD DEPTH GAUGE	20 mm	14850
BDG 03	M6 X 1-6H THREAD DEPTH GAUGE	20 mm	14850
BDG 03	NO. 8 - 32 UNC - 2B THREAD DEPTH GAUGE	20 mm	14850
BDG 03	NO. 10 - 24 UNC - 2B THREAD DEPTH GAUGE	20 mm	14850
BDG 03	NO. 12 - 24 UNC - 2B THREAD DEPTH GAUGE	20 mm	14850
BDG 03	1/4 - 20 UNC - 2B THREAD DEPTH GAUGE	20 mm	14850
BDG 04	M8 X 1.25-6H THREAD DEPTH GAUGE	35 mm	15620
BDG 04	M10 X 1.5-6H THREAD DEPTH GAUGE	35 mm	15620
BDG 04	5/16 - 18 UNC - 2B THREAD DEPTH GAUGE	35 mm	15620
BDG 04	3/8 - 16 UNC - 2B THREAD DEPTH GAUGE	35 mm	15620
BDG 04	7/16 - 14 UNC - 2B THREAD DEPTH GAUGE	35 mm	15620
BDG 05	M12 X 1.75-6H THREAD DEPTH GAUGE	45 mm	16390
BDG 05	M14 X 2.0-6H THREAD DEPTH GAUGE	45 mm	16390
BDG 05	M16 X 2.0-6H THREAD DEPTH GAUGE	45 mm	16390
BDG 05	1/2 - 13 UNC - 2B THREAD DEPTH GAUGE	45 mm	16390
BDG 05	9/16 - 12 UNC - 2B THREAD DEPTH GAUGE	45 mm	16390
BDG 05	5/8 - 11 UNC - 2B THREAD DEPTH GAUGE	45 mm	16390
	SETTING MASTER FOR BDG 03		3300
	SETTING MASTER FOR BDG 04		3850
	SETTING MASTER FOR BDG 05		4180

# 3/4 NGT, ISO 7R & NPT CORE TAPER THREAD GAUGES **BAKER**

...a passion for precision

## NGT Taper Thread - 3/4-14 NGT Taper (Eight Types) IS 15894

SIZE	PRICE ₹
TAPER THREAD PLUG GAUGE A (L1) WITH BASIC/MIN/MAX. STEPS	5090
FULL FORM TAPER THREAD PLUG GAUGE B(L9) WITHOUT STEPS	5565
PLAIN TAPER PLUG GAUGE C WITHOUT STEPS	1845
TAPER THREAD RING GAUGE D (L1) WITH ONE STEP.	7620
FULL FORM TAPER THREAD RING GAUGE E (L8)	9115
PLAIN TAPER RING GAUGE F WITHOUT STEP	8535
MASTER TAPER THREAD RING GAUGE (GAUGE M-INT) WITHOUT STEP (NEW)	11625
MASTER TAPER PLUG GAUGE (GAUGE M-EXT) WITHOUT STEP.	7185

## ISO 7R TAPER PIPE THREADS

Basic Dimensions ISO 7-1:1994 or IS 554-1999  
Gauging Practice ISO 7-2:2000 or IS 8999-2003

NOMINAL DIAMETER	TAPER FULL FORM THREAD PLUG	PARALLEL FULL FORM THREAD RING	PLAIN TAPER RING	TAPER MODIFIED FORM CHECK PLUG FOR RING	PARALLEL THREADS CHECK RING GAUGE
	GAUGE NO. 1 ₹	GAUGE NO. 3 ₹	GAUGE NO. 4 ₹	GAUGE NO. 5 ₹	GAUGE NO. 6 ₹
1/16 - 28	8260	18200	10920	12390	27300
1/8 - 28	8260	17030	10220	12390	25550
1/4 - 19	6660	15860	9520	9985	23790
3/8 - 19	6660	13625	8175	9985	20440
1/2 - 14	6660	10790	6475	9985	16190
3/4 - 14	6660	10790	6475	9985	16190
1 - 11	9440	15670	9405	14160	23500
1.1/4 - 11	9440	15670	9405	14160	23500
1.1/2 - 11	9440	15670	9405	14160	23500
2 - 11	14095	19570	11745	21140	29350
2.1/2 - 11	14430	19570	11745	21650	29350
3 - 11	14430	19570	11745	21650	29350
4 - 11	21730	29370	17625	32585	44055
5 - 11	24850	33725	20235	37265	50590
6 - 11	24850	33725	20235	37265	50590

## NPT THREAD & CORE GAUGES

AMERICAN STANDARD - BASIC DIMENSIONS & GAUGING PRACTICE: ASME B1.20.1-2013 OR H-28 PART II-1957.

### THREAD PLUG GAUGES

SIZE	UNIT RATE ₹
1/8 -27 NPT L1 TAPER 3 STEP	5910
1/8 -27 NPT L3 TAPER 3 STEP	6890
1/8 -27 NPT L1 CORE 2 STEP	6400
1/4 -18 NPT L1 TAPER 3 STEP	4935
1/4 -18 NPT L3 TAPER 3 STEP	5760
1/4 -18 NPT L1 CORE 2 STEP	5350
3/8 -18 NPT L1 TAPER 3 STEP	4935
3/8 -18 NPT L3 TAPER 3 STEP	5760
3/8 -18 NPT L1 CORE 2 STEP	5350
1/2 -14 NPT L1 TAPER 3 STEP	4935
1/2 -14 NPT L3 TAPER 3 STEP	5760
1/2 -14 NPT L1 CORE 2 STEP	5350
3/4 -14 NPT L1 TAPER 3 STEP	4935
3/4 -14 NPT L3 TAPER 3 STEP	5760
3/4 -14 NPT L1 CORE 2 STEP	5350
1 - 11.1/2 NPT L1 TAPER 3 STEP	6675
1 - 11.1/2 NPT L3 TAPER 3 STEP	7780
1 - 11.1/2 NPT L1 CORE 2 STEP	7230
1.1/4 - 11.1/2 NPT L1 TAPER 3 STEP	6675
1.1/4 - 11.1/2 NPT L3 TAPER 3 STEP	7780
1.1/4 - 11.1/2 NPT L1 CORE 2 STEP	7230
1.1/2 - 11.1/2 NPT L1 TAPER 3 STEP	6675
1.1/2 - 11.1/2 NPT L3 TAPER 3 STEP	7780
1.1/2 - 11.1/2 NPT L1 CORE 2 STEP	7230
2 - 11.1/2 NPT L1 TAPER 3 STEP	9740
2 - 11.1/2 NPT L3 TAPER 3 STEP	11360
2 - 11.1/2 NPT L1 CORE 2 STEP	10560

### THREAD RING GAUGES

SIZE	UNIT RATE ₹
1/8 -27 NPT L1 TAPER 3 STEP	9660
1/8 -27 NPT L2 TAPER 3 STEP	11270
1/8 -27 NPT L1 CORE 2 STEP	10465
1/4 -18 NPT L1 TAPER 3 STEP	8810
1/4 -18 NPT L2 TAPER 3 STEP	10285
1/4 -18 NPT L1 CORE 2 STEP	9870
3/8 -18 NPT L1 TAPER 3 STEP	8810
3/8 -18 NPT L2 TAPER 3 STEP	10285
3/8 -18 NPT L1 CORE 2 STEP	9870
1/2 -14 NPT L1 TAPER 3 STEP	7660
1/2 -14 NPT L2 TAPER 3 STEP	8935
1/2 -14 NPT L1 CORE 2 STEP	8300
3/4 -14 NPT L1 TAPER 3 STEP	7660
3/4 -14 NPT L2 TAPER 3 STEP	8935
3/4 -14 NPT L1 CORE 2 STEP	8300
1 - 11.1/2 NPT L1 TAPER 3 STEP	11780
1 - 11.1/2 NPT L2 TAPER 3 STEP	13745
1 - 11.1/2 NPT L1 CORE 2 STEP	12770
1.1/4 - 11.1/2 NPT L1 TAPER 3 STEP	11780
1.1/4 - 11.1/2 NPT L2 TAPER 3 STEP	13745
1.1/4 - 11.1/2 NPT L1 CORE 2 STEP	12770
1.1/2 - 11.1/2 NPT L1 TAPER 3 STEP	11780
1.1/2 - 11.1/2 NPT L2 TAPER 3 STEP	13745
1.1/2 - 11.1/2 NPT L1 CORE 2 STEP	12770
2 - 11.1/2 NPT L1 TAPER 3 STEP	14580
2 - 11.1/2 NPT L2 TAPER 3 STEP	17010
2 - 11.1/2 NPT L1 CORE 2 STEP	15800



## NPT TAPER THREAD GAUGES

**AMERICAN STANDARD**

BASIC DIMENSIONS &amp; GAUGING PRACTICE: ASME B1.20.1-2013 OR H-28 PART II-1957.

RIGHT HAND		NPT BASIC STEP		NPT MIN & MAX STEPS	
NOMINAL DIAMETER	THREADS PER INCH	PLUGS ₹	RINGS ₹	PLUGS ₹	RINGS ₹
1/16	27	3620	5380	3945	6440
1 / 8	27	3620	5380	3945	6440
1 / 4	18	3000	4880	3290	5880
3 / 8	18	3000	4880	3290	5880
1 / 2	14	3000	4265	3290	5110
3 / 4	14	3000	4265	3290	5110
1	11.1/2	4015	6575	4455	7855
1.1/4	11.1/2	4015	6575	4455	7855
1.1/2	11.1/2	4015	6575	4455	7855
2	11.1/2	5870	8135	6440	9760
2.1/2	8	7260	8885	8000	10640
3	8	7260	8885	8000	10640
3.1/2	8	7260	8885	8000	10640
4	8	10945	13365	12025	16060
5	8	12005	14700	13250	17630
6	8	12005	14700	13250	17630

NOTE : DETAILED CERTIFICATE OF INSPECTION IS SUPPLIED WITH EACH GAUGE, TRACEABLE TO NATIONAL LENGTH STANDARDS.

## NPTF TAPER THREAD GAUGES

GAUGING PRACTICE :

ASME B 1.20.5 - 1991

RIGHT HAND		TAPER THREAD PLUG					TAPER THREAD RING				
Nominal Diameter	Threads Per Inch	L1 Basic ₹	L3 Basic ₹	L1 Step Limit ₹	L3 Step Limit ₹	6 Step Plain Plug ₹	L1 Basic ₹	L2 Basic ₹	L1 Step Limit ₹	L2 Step Limit ₹	6 Step Plain Ring ₹
1/16"	27	3955	4320	4350	4735	5200	5920	6450	7105	7730	8500
1/8"	27	3955	4320	4350	4735	5200	5920	6450	7105	7730	8500
1/4"	18	3300	3590	3640	3945	4330	5370	5860	6480	7075	7770
3/8"	18	3300	3590	3640	3945	4330	5370	5860	6480	7075	7770
1/2"	14	3300	3590	3640	3945	4330	4670	5860	5620	6120	6730
3/4"	14	3300	3590	3640	3945	4330	4670	5860	5620	6120	6730
1"	11.1/2	4435	4805	4870	5350	5880	7230	7865	8645	9425	10370
1.1/4"	11.1/2	4435	4805	4870	5350	5880	7230	7865	8645	9425	10370
1.1/2"	11.1/2	4435	4805	4870	5350	5880	7230	7865	8645	9425	10370
2"	11.1/2	6440	7035	7095	7740	8520	8955	9780	10735	11700	12865
2.1/2"	8	8000	8760	8790	9600	10560	9770	10650	11700	12775	14040
3"	8	8000	8760	8790	9600	10560	9770	10650	11700	12775	14040

NOTE: DETAILED CERTIFICATE OF INSPECTION IS SUPPLIED WITH EACH GAUGE, TRACEABLE TO NATIONAL LENGTH STANDARDS.

## ANPT TAPER THREAD GAUGES

BASIC DIMENSIONS &amp; GAUGING PRACTICE :

SAE AS71051B:2008

RIGHT HAND		TAPER THREAD PLUG					TAPER THREAD RING				
Nominal Diameter	Threads Per Inch	L1 Basic Step ₹	L3 Basic Step ₹	L1 Step Min/Max ₹	L3 Step Min/Max ₹	6 Step Plain Plug ₹	L1 Basic Step ₹	L2 Basic Step ₹	L1 Step Min/Max ₹	L2 Step Min/Max ₹	6 Step Plain Ring ₹
1/16	27	6085	6950	6625	7575	8335	9050	10340	10830	12380	13615
1/8	27	6085	6950	6625	7575	8335	9050	10340	10830	12380	13615
1/4	18	5045	5765	5535	6325	6960	8210	9385	9880	11295	12430
3/8	18	5045	5765	5535	6325	6960	8210	9385	9880	11295	12430
1/2	14	5045	5765	5535	6325	6960	7180	8200	8595	9820	10800
3/4	14	5045	5765	5535	6325	6960	7180	8200	8595	9820	10800
1	11.1/2	6750	7720	7480	8550	9405	11045	12630	13220	15105	16610
1.1/4	11.1/2	6750	7720	7480	8550	9405	11045	12630	13220	15105	16610
1.1/2	11.1/2	6750	7720	7480	8550	9405	11045	12630	13220	15105	16610
2	11.1/2	9870	11275	10830	12380	13615	13690	15645	16425	18765	20635
2.1/2	8	12210	13960	13450	15375	16915	14945	17080	17890	20450	22500
3	8	12210	13960	13450	15375	16915	14945	17080	17890	20450	22500

NOTE: DETAILED CERTIFICATE OF INSPECTION IS SUPPLIED WITH EACH GAUGE, TRACEABLE TO NATIONAL LENGTH STANDARDS.



# EXTERNAL MICROMETERS

## METRIC EXTERNAL MICROMETERS

DIN : 863 / IS 2967 - 1983

TYPE	RANGE	READING	₹
MMC25	0 - 25 mm	0.01 mm	1700
MMC50	25 - 50 mm	0.01 mm	2100
MMC75	50 - 75 mm	0.01 mm	2390
MMC100	75 - 100 mm	0.01 mm	2590
MMC125	100 - 125 mm	0.01 mm	3190
MMC150	125 - 150 mm	0.01 mm	3570
MMC175	150 - 175 mm	0.01 mm	4150
MMC200	175 - 200 mm	0.01 mm	4950

TYPE	RANGE	READING	₹
MMC25-1	0 - 25 mm	0.001 mm	2080
MMC50-1	25 - 50 mm	0.001 mm	2825
MMC75-1	50 - 75 mm	0.001 mm	3125
MMC100-1	75 - 100 mm	0.001 mm	3560
MMC125-1	100 - 125 mm	0.001 mm	4480
MMC150-1	125 - 150 mm	0.001 mm	4760

## METRIC EXTERNAL MICROMETERS WITH INTERCHANGEABLE ANVILS

TYPE	RANGE	READING	₹
MMI0-100	0 - 100 mm	0.01 mm	9950
MMI0-150	0 - 150 mm	0.01 mm	12990
MMI150-300	150 - 300 mm	0.01 mm	18000
MMI200-300	200 - 300 mm	0.01 mm	15550
MMI300-400	300 - 400 mm	0.01 mm	20500
MMI400-500	400 - 500 mm	0.01 mm	22600
MMI0-100-1	0 - 100 mm	0.001 mm	13275
MMI0-150-1	0 - 150 mm	0.001 mm	16365
MMI150-300-1	150-300 mm	0.001 mm	22715

## METRIC EXTERNAL MICROMETERS WITH ADD ON EXTENSION ANVIL

TYPE	RANGE	READING	₹
MME500-600	500 - 600 mm	0.01 mm	30200
MME600-700	600 - 700 mm	0.01 mm	35750
MME700-800	700 - 800 mm	0.01 mm	39650
MME800-900	800 - 900 mm	0.01 mm	44500
MME900-1000	900 - 1000 mm	0.01 mm	52500

## METRIC MICROMETERS HEAD

TYPE	RANGE	READING	₹
MM25-HP	0 - 25 mm	0.01 mm	1450
MM25-HT	0 - 25 mm	0.01 mm	1500
MM25-1HP	0 - 25 mm	0.001 mm	1600
MM25-1HT	0 - 25 mm	0.001 mm	1650

## METRIC DEPTH MICROMETER

TYPE	RANGE	READING	₹
MMC25-DM60	0 - 25 mm	0.01 mm	5110
MMC25-1DM60	0 - 25 mm	0.001 mm	5340
MMC25-DM100	0 - 25 mm	0.01 mm	5625
MMC25-1DM100	0 - 25 mm	0.001 mm	5875
MMC25-DM60S	0 - 25 mm	0.01 mm	5875
MMC25-1DM60S	0 - 25 mm	0.001 mm	6145
MMC25-DM100S	0 - 25 mm	0.01 mm	6470
MMC25-1DM100S	0 - 25 mm	0.001 mm	6755
MMC100-DM60	0 - 100 mm	0.01 mm	6255
MMC100-DM100	0 - 100 mm	0.01 mm	6800
MMC150-DM60	0 - 150 mm	0.01 mm	7815
MMC150-DM100	0 - 150 mm	0.01 mm	8600

**NOTE: CERTIFICATE OF INSPECTION IS SUPPLIED WITH EACH MICROMETER, TRACEABLE TO NATIONAL LENGTH STANDARDS.**

**INCH DEPTH MICROMETERS**
**ASME B89.1.13-2013**

TYPE	RANGE	READING	₹
INC1-DM60	0-1 inch	0.001 inch	5110
INC1-1DM60	0-1 inch	0.0001 inch	5340
INC1-DM100	0-1 inch	0.001 inch	5625
INC1-1DM100	0-1 inch	0.0001 inch	5875
INC1-DM60S	0-1 inch	0.001 inch	5875
INC1-1DM60S	0-1 inch	0.0001 inch	6145
INC1-DM100S	0-1 inch	0.001 inch	6470
INC1-1DM100S	0-1 inch	0.0001 inch	6755
INC4-DM60	0-4 inch	0.001 inch	6255
INC4-DM100	0-4 inch	0.001 inch	6880
INC6-DM60	0-6 inch	0.001 inch	7815
INC6-DM100	0-6 inch	0.001 inch	8600

**INCH EXTERNAL MICROMETERS**
**ASME B89.1.13-2013**

TYPE	RANGE	READING	₹
INC1	0 - 1 inch	0.001 inch	1700
INC2	1 - 2 inch	0.001 inch	2100
INC3	2 - 3 inch	0.001 inch	2390
INC4	3 - 4 inch	0.001 inch	2590
INC5	4 - 5 inch	0.001 inch	3190
INC6	5 - 6 inch	0.001 inch	3570
INC7	6 - 7 inch	0.001 inch	4150
INC8	7 - 8 inch	0.001 inch	4950

TYPE	RANGE	READING	₹
INC1-1	0 - 1 inch	0.0001 inch	2080
INC2-1	1 - 2 inch	0.0001 inch	2825
INC3-1	2 - 3 inch	0.0001 inch	3125
INC4-1	3 - 4 inch	0.0001 inch	3560
INC5-1	4 - 5 inch	0.0001 inch	4480
INC6-1	5 - 6 inch	0.0001 inch	4760

**INCH EXTERNAL MICROMETERS WITH INTERCHANGEABLE ANVILS**

TYPE	RANGE	READING	₹
INI0-4	0-4 inch	0.001 inch	9950
INI0-6	0-6 inch	0.001 inch	12990
INI6-12	6-12 inch	0.001 inch	18000
INI8-12	8-12 inch	0.001 inch	15550
INI12-16	12-16 inch	0.001 inch	20500
INI16-20	16-20 inch	0.001 inch	22600
INI0-4-1	0 -4 inch	0.0001 inch	13275
INI0-6-1	0 -6 inch	0.0001 inch	16365
INI6-12-1	6-12 inch	0.0001 inch	22715

**INCH EXTERNAL MICROMETERS WITH ADD ON EXTENSION ANVIL**

TYPE	RANGE	READING	₹
INE20-24	20-24 inch	0.001 inch	30200
INE24-28	24-28 inch	0.001 inch	35750
INE28-32	28-32 inch	0.001 inch	39650
INE32-36	32-36 inch	0.001 inch	44500
INE36-40	36-40 inch	0.001 inch	52500

**INCH MICROMETERS HEAD**

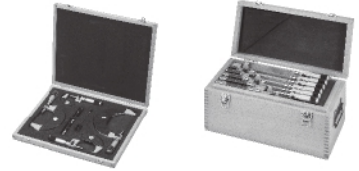
TYPE	RANGE	READING	₹
IN1-HP	0 - 1 inch	0.001 inch	1450
IN1-HT	0 - 1 inch	0.001 inch	1500
IN1-1HP	0 - 1 inch	0.0001 inch	1600
IN1-1HT	0 - 1 inch	0.0001 inch	1650

**NOTE: CERTIFICATE OF INSPECTION IS SUPPLIED WITH EACH MICROMETER, TRACEABLE TO NATIONAL LENGTH STANDARDS**

# EXTERNAL MICROMETERS

**BAKER**  
...A PASSION FOR PRECISION

## 1) SET OF MECHANICAL MICROMETERS



### 1) A SET OF FOUR METRIC MICROMETERS IN ONE WOODEN BOX

TYPE	RANGE	READING	₹
4MMC100	0 - 100 mm	0.01 mm	9350
4MMC100-1	0 - 100 mm	0.001 mm	12200

### 2) A SET OF FOUR INCH MICROMETERS IN ONE WOODEN BOX

TYPE	RANGE	READING	₹
4INC4	0 - 4 inch	0.001 inch	9350
4INC4-1	0 - 4 inch	0.0001 inch	12200

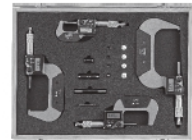
### 3) A SET OF SIX METRIC MICROMETERS IN ONE WOODEN BOX

TYPE	RANGE	READING	₹
6MMC150	0 - 150 mm	0.01 mm	16540
6MMC150-1	0 - 150 mm	0.001 mm	21850

### 4) A SET OF SIX INCH MICROMETERS IN ONE WOODEN BOX

TYPE	RANGE	READING	₹
6INC6	0 - 6 inch	0.001 inch	16540
6INC6-1	0 - 6 inch	0.0001 inch	21850

## 5) SET OF DIGITAL MICROMETERS



### A SET OF FOUR DIGITAL MICROMETERS IN ONE WOODEN BOX

TYPE	RANGE	READING	₹
4DMM100	0 - 100 mm	0.001 mm / 0.00005 inch	45550

## DIGITAL EXTERNAL MICROMETERS WITHOUT DATA OUTPUT

TYPE	RANGE	READING	₹
DMM25	0 - 25 mm	0.001 mm / 0.00005 inch	7980
DMM50	25 - 50 mm	0.001 mm / 0.00005 inch	10405
DMM75	50 - 75 mm	0.001 mm / 0.00005 inch	12320
DMM100	75 - 100 mm	0.001 mm / 0.00005 inch	14250
DMM125	100 - 125 mm	0.001 mm / 0.00005 inch	15710
DMM150	125 - 150 mm	0.001 mm / 0.00005 inch	17625
DMM175	150 - 175 mm	0.001 mm / 0.00005 inch	18870
DMM200	175 - 200 mm	0.001 mm / 0.00005 inch	20755

## DIGITAL EXTERNAL MICROMETERS WITH DATA OUTPUT

TYPE	RANGE	READING	₹
DMM25 - 1	0 - 25 mm	0.001 mm / 0.00005 inch	9865
DMM50 - 1	25 - 50 mm	0.001 mm / 0.00005 inch	12560
DMM75 - 1	50 - 75 mm	0.001 mm / 0.00005 inch	16075
DMM100 - 1	75 - 100 mm	0.001 mm / 0.00005 inch	18065
	Data Cable P1502		5605
	SwitchP1601		1295

NOTE: CERTIFICATE OF INSPECTION IS SUPPLIED WITH EACH MICROMETER, TRACEABLE TO NATIONAL LENGTH STANDARDS.



**1) TUBE TYPE : [TYPE - T1] SPHERICAL HARDENED STEEL ANVIL & FLAT CARBIDE SPINDLE FACE.  
[TYPE - T2] BOTH ENDS SPHERICAL HARDENED STEEL FACES.**

TYPE	RANGE	READING	₹
MMC25 - T1	0 - 25 mm	0.01 mm	2770
MMC50 - T1	25 - 50 mm	0.01 mm	3595
MMC75 - T1	50 - 75 mm	0.01 mm	4060
MMC100 - T1	75 - 100 mm	0.01 mm	4470
MMC25 - T2	0 - 25 mm	0.01 mm	2915
MMC50 - T2	25 - 50 mm	0.01 mm	3790
MMC75 - T2	50 - 75 mm	0.01 mm	4145
MMC100 - T2	75 - 100 mm	0.01 mm	4715

TYPE	RANGE	READING	₹
INC1 - T1	0 - 1 inch	0.001 inch	2770
INC2 - T1	1 - 2 inch	0.001 inch	3595
INC3 - T1	2 - 3 inch	0.001 inch	4060
INC4 - T1	3 - 4 inch	0.001 inch	4470
INC1 - T2	0 - 1 inch	0.001 inch	2915
INC2 - T2	1 - 2 inch	0.001 inch	3790
INC3 - T2	2 - 3 inch	0.001 inch	4145
INC4 - T2	3 - 4 inch	0.001 inch	4715

**2) DISC TYPE: ROTATING - HARDENED STEEL MEASURING FACES.**

TYPE	RANGE	READING	₹
MMC25 - D	0 - 25 mm	0.01 mm	5390
MMC50 - D	25 - 50 mm	0.01 mm	6250
MMC75 - D	50 - 75 mm	0.01 mm	6690
MMC100 - D	75 - 100 mm	0.01 mm	7800

TYPE	RANGE	READING	₹
INC1 - D	0 - 1 inch	0.001 inch	5390
INC2 - D	1 - 2 inch	0.001 inch	6250
INC3 - D	2 - 3 inch	0.001 inch	6690
INC4 - D	3 - 4 inch	0.001 inch	7800

**3) DISC TYPE: NON - ROTATING - HARDENED STEEL MEASURING FACES.**

TYPE	RANGE	READING	₹
MMC25 - ND	0 - 25 mm	0.01 mm	8480
MMC50 - ND	25 - 50 mm	0.01 mm	10195
MMC75 - ND	50 - 75 mm	0.01 mm	10830
MMC100 - ND	75 - 100 mm	0.01 mm	11250

TYPE	RANGE	READING	₹
INC1 - ND	0 - 1 inch	0.001 inch	8480
INC2 - ND	1 - 2 inch	0.001 inch	10195
INC3 - ND	2 - 3 inch	0.001 inch	10830
INC4 - ND	3 - 4 inch	0.001 inch	11250

**NOTE:**

- 1) CERTIFICATE OF INSPECTION IS SUPPLIED WITH EACH MICROMETER, TRACEABLE TO NATIONAL LENGTH STANDARDS.
- 2) PRICES FOR READINGS 0.001 mm & 0.0001" ON REQUEST.

# SPECIAL MICROMETERS

## 4) POINT TYPE : 15° HARDENED STEEL MEASURING TIPS.

TYPE	RANGE	READING	₹
MMC25 - P1	0 - 25 mm	0.01 mm	5430
MMC50 - P1	25 - 50 mm	0.01 mm	7060
MMC75 - P1	50 - 75 mm	0.01 mm	8520
MMC100 - P1	75 - 100 mm	0.01 mm	10650

TYPE	RANGE	READING	₹
INC1 - P1	0 - 1 inch	0.001 inch	5430
INC2 - P1	1 - 2 inch	0.001 inch	7060
INC3 - P1	2 - 3 inch	0.001 inch	8520
INC4 - P1	3 - 4 inch	0.001 inch	10650

## 5) POINT TYPE : 30° HARDENED STEEL MEASURING TIPS.

TYPE	RANGE	READING	₹
MMC25 - P2	0 - 25 mm	0.01 mm	5030
MMC50 - P2	25 - 50 mm	0.01 mm	6290
MMC75 - P2	50 - 75 mm	0.01 mm	7140
MMC100 - P2	75 - 100 mm	0.01 mm	8375

TYPE	RANGE	READING	₹
INC1 - P2	0 - 1 inch	0.001 inch	5030
INC2 - P2	1 - 2 inch	0.001 inch	6290
INC3 - P2	2 - 3 inch	0.001 inch	7140
INC4 - P2	3 - 4 inch	0.001 inch	8375

## 6) SPLINE TYPE : Ø3 mm X L 8 mm CARBIDE MEASURING FACES.

TYPE	RANGE	READING	₹
MMC25 - S3	0 - 25 mm	0.01 mm	5610
MMC50 - S3	25 - 50 mm	0.01 mm	7025
MMC75 - S3	50 - 75 mm	0.01 mm	8285
MMC100 - S3	75 - 100 mm	0.01 mm	8795

TYPE	RANGE	READING	₹
INC1 - S3	0 - 1 inch	0.001 inch	5610
INC2 - S3	1 - 2 inch	0.001 inch	7025
INC3 - S3	2 - 3 inch	0.001 inch	8285
INC4 - S3	3 - 4 inch	0.001 inch	8795

## 7) SPLINE TYPE : Ø2 mm X L 5 mm CARBIDE MEASURING FACES.

TYPE	RANGE	READING	₹
MMC25 - S2	0 - 25 mm	0.01 mm	5610
MMC50 - S2	25 - 50 mm	0.01 mm	7025
MMC75 - S2	50 - 75 mm	0.01 mm	8285
MMC100 - S2	75 - 100 mm	0.01 mm	8795

TYPE	RANGE	READING	₹
INC1 - S2	0 - 1 inch	0.001 inch	5610
INC2 - S2	1 - 2 inch	0.001 inch	7025
INC3 - S2	2 - 3 inch	0.001 inch	8285
INC4 - S2	3 - 4 inch	0.001 inch	8795

NOTE: 1) CERTIFICATE OF INSPECTION IS SUPPLIED WITH EACH MICROMETER, TRACEABLE TO NATIONAL LENGTH STANDARDS.  
2) PRICES FOR READINGS 0.001 mm & 0.0001 inch ON REQUEST.

**8) BLADE MICROMETERS (BLADE THICKNESS 0.75 mm)**

TYPE	RANGE	READING	₹
MMC25 - B	0 - 25 mm	0.01 mm	8035
MMC50 - B	25 - 50 mm	0.01 mm	8560
MMC75 - B	50 - 75 mm	0.01 mm	8840
MMC100 - B	75 - 100 mm	0.01 mm	9775
MMC125 - B	100 - 125 mm	0.010 mm	15050
MMC150 - B	125 - 150 mm	0.010 mm	17610
MMC175 - B	150 - 175 mm	0.010 mm	19230
MMC200 - B	175 - 200 mm	0.010 mm	20695

**BLADE MICROMETERS (BLADE THICKNESS 0.75 mm)**

TYPE	RANGE	READING	₹
INC1 - B	0 - 1 inch	0.001 inch	8035
INC2 - B	1 - 2 inch	0.001 inch	8560
INC3 - B	2 - 3 inch	0.001 inch	8840
INC4 - B	3 - 4 inch	0.001 inch	9775
INC5 - B	4 - 5 inch	0.001 inch	15050
INC6 - B	5 - 6 inch	0.001 inch	17610
INC7 - B	6 - 7 inch	0.001 inch	19230
INC8 - B	7 - 8 inch	0.001 inch	20695

**BLADE MICROMETERS (BLADE THICKNESS 0.4 mm)**

TYPE	RANGE	READING	₹
MMC25 - BA	0 - 25 mm	0.01 mm	9650
MMC50 - BA	25 - 50 mm	0.01 mm	10275
MMC75 - BA	50 - 75 mm	0.01 mm	10615
MMC100 - BA	75 - 100 mm	0.01 mm	11740
MMC125 - BA	100 - 125 mm	0.01 mm	19010
MMC150 - BA	125 - 150 mm	0.01 mm	22245
MMC175 - BA	150 - 175 mm	0.01 mm	24290
MMC200 - BA	175 - 200 mm	0.01 mm	26140

TYPE	RANGE	READING	₹
INC1 - BA	0 - 1 inch	0.001 inch	9650
INC2 - BA	1 - 2 inch	0.001 inch	10275
INC5 - BA	2 - 3 inch	0.001 inch	10615
INC4 - BA	3 - 4 inch	0.001 inch	11740
INC5 - BA	4 - 5 inch	0.001 inch	19010
INC6 - BA	5 - 6 inch	0.001 inch	22245
INC7 - BA	6 - 7 inch	0.001 inch	24290
INC8 - BA	7 - 8 inch	0.001 inch	26140

**SETTING GAUGES FOR EXTERNAL MICROMETERS**

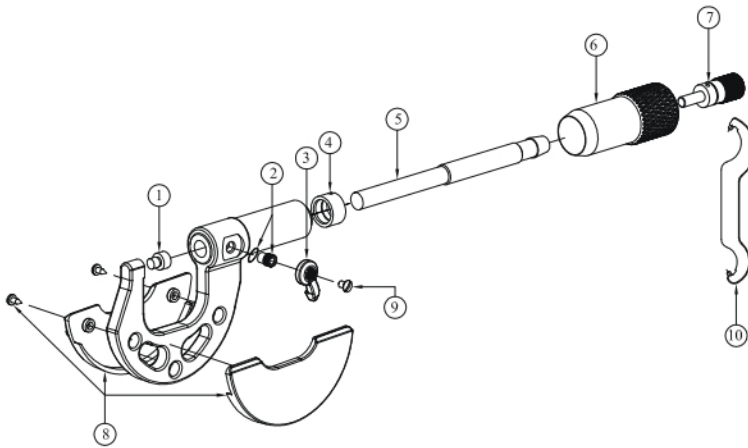
PART NO.	SIZE	UNIT PRICE ₹	PART NO.	SIZE	UNIT PRICE ₹
MM0200C066000BF00F	25.0 mm	385	MI0200C069000BF00F	1.0 inch	470
MM0300C091000BF00F	50.0 mm	440	MI0300C094000BF00F	2.0 inch	495
MM0400C116000BF00F	75.0 mm	470	MI0400C119000BF00F	3.0 inch	525
MM0500C141000BF00F	100.0 mm	495	MI0500C144000BF00F	4.0 inch	580
MM0600C167000BF00F	125.0 mm	605	MI0600C170000BF00F	5.0 inch	635
MM0700C193000BF00F	150.0 mm	660	MI0700C196000BF00F	6.0 inch	690
MM0800C219000BF00F	175.0 mm	715	MI0700C196000BF00F	7.0 inch	745
MM0900C245000BF00F	200.0 mm	745	MI0900C262000BF00F	8.0 inch	800
MM0900C246000BF00F	225.0 mm	825	MI0900C263000BF00F	9.0 inch	880
MM0900C247000BF00F	250.0 mm	880	MI0900C264000BF00F	10.0 inch	935
MM0900C248000BF00F	275.0 mm	935	MI0900C265000BF00F	11.0 inch	990

**TUBULAR MICROMETERS (INTERNAL MICROMETERS)**

TYPE	RANGE	READING	₹
MMT150	50 - 150 mm	0.01 mm	7370
MMT300	50 - 300 mm	0.01 mm	9930
MMT500	50 - 500 mm	0.01 mm	13644
MMT1000	50 - 1000 mm	0.01 mm	18000
MMT1500	50 - 1500 mm	0.01 mm	22253



## MECHANICAL MICROMETERS SPARES PRICE LIST



REF. NO.	DESCRIPTION
1	Anvil
2	Pressure Screw M4 with washer
3	Metal Locking Lever
4	Collet Lock Nut
5	Spindle
6	Thimble Marked
7	Ratchet Knob
8	Handle Shell Set
9	Raised CSK Screw
10	Spanner

### MECHANICAL MICROMETERS SPARES

PART NO.	PART DESCRIPTION	UNIT PRICE ₹	USED ON
M00000C018000000BF	Collet Lock Nut For full slitted Collet (For Spi.Ø6.5)	25	All micrometers MMA25 to MMA200, INA1 to INA8
M00000C051J00000GF	Complete Anvil (0-200)	175	All micrometers MMA25 to MMA200, INA1 to INA8,MMC25 to MMC200 ,INC1 to INC8 "
M00000C459000D04GF	Finish Spindle mm ("C"series)	500	All micrometers MMC25 to MMC200
M00000C476000D04GF	Finish Spindle inch ("C"series)	500	All micrometers INC1 to INC8
MM0000C0490000D04F	Thimble Marked mm ("C"series)	200	All micrometers MMC25 to MMC200
MI0000C1020000D04F	Thimble Marked inch ("C"series)	200	All micrometers INC1 to INC8
M00000S0210000000F	Knurled Ring with toothed ring	90	All micrometers MMA25 to MMA200 ,INA1 to INA8 & MMC25 to MMC500 ,INC1 to INC20
M00000C020000000BF	Pressure Screw M4 x 0.7	12	All micrometers MMC25 to MMC200, INC1 to INI8
M00100C0210000000F	Metalic Locking Lever (0-25mm)	5	All micrometers MMC25 to MMC200, INC1 to INI8 & MMI0-100 to MMI400-500,INI0-4 to INI16-20"
M00000C0150000000F	Raised CSK Screw M2.5	4	All micrometers MMC25 to MMC200, INC1 to INI8 & MMI0-100 to MMI400-500,INI0-4 to INI16-20"
I00000C0240000000F	Ratchet Knob	1000	All micrometers Up to 500
M00000C0110000000F	Spanner	20	All micrometers Up to 500
M00000C521000B000F	Wave Washer	4	All micrometers Up to 500
M00000S0220000000F	"Set of (Thimble spring + Thimble pin+ Thimble grub screw)"	20	All micrometers MMC25 to MMC200, INC1 to INI8 & MMI0-100 to MMI400-500,INI0-4 to INI16-20"
M00100S0230000000F	Printed Heat Insulating Plate set 0-25 mm	45	All micrometers Range 0-25
M00200S0230000000F	Printed Heat Insulating Plate set 25-50 mm	65	All micrometers Range 25-50
M00300S0230000000F	Printed Heat Insulating Plate set 50-75 mm	85	All micrometers Range 50-75
M00400S0230000000F	Printed Heat Insulating Plate set 75-100 mm	100	All micrometers Range 75-100
M00500S0230000000F	Heat Insulating Plate set 100-125 mm	125	All micrometers Range 100-125
M00600S0230000000F	Heat Insulating Plate set 125-150 mm	150	All micrometers Range 125-150
M00700S0230000000F	Heat Insulating Plate set 150-175 mm	175	All micrometers Range 150-175
M00800S0230000000F	Heat Insulating Plate set 175-200 mm	200	All micrometers Range 175-200

**DIGITAL MICROMETERS SPARES**

PART NO.	PART DESCRIPTION	UNIT PRICE ₹	USED ON
IM0101S0020000000F	Electronic Module IP65 0-25 mm	2550	DMM25
IM0201S0040000000F	Electronic Module IP65 25-50mm	2810	DMM50
IM0301S0040000000F	Electronic Module IP65 50-75mm	3020	DMM75
IM0401S0040000000F	Electronic Module IP65 75-100mm	3300	DMM100
I00000C0060000000F	Battery cap with plastic washer (For IP65 digital micrometer)	15	DMM25 DMM50 DMM75 DMM100
I00000C0230000000F	Spindle locking knob (Plastic)	15	
IM0101C0020000000F	Heat insulating covers set - 0 - 25mm	50	DMM25
IM0201C0020000000F	Heat insulating covers set - 25 - 50mm	50	DMM50
IM0301C0020000000F	Heat insulating covers set - 50 - 75mm	75	DMM75
IM0401C0020000000F	Heat insulating covers set - 75 - 100mm	75	DMM100
I00000C0050000000F	Battery -SR 44 ( For IP65 digital micrometer)	125	DMM75 DMM100

**TERMS AND CONDITIONS (for products)**

1. PRICE : Ex. Works, Pune.
2. PACKING & FORWARDING : Extra @ 3%
3. GST : Extra as applicable.
4. PAYMENT : 25% Advance alongwith order and balance against Proforma Invoice.
5. DESPATCH : Courier Service
6. FREIGHT : Extra at Actual
7. ANY OTHER LEVY : Extra to your account
8. This price list is subject to alteration without any notice & cancels all our previous price lists.

# CALIBRATION CHARGES

## A. PARALLEL THREAD GAUGES - (STANDARD GAUGES)

PARTICULARS	SIZE RANGE UP TO 20 mm UP TO 3/4" ₹	SIZE RANGE 21 mm TO 40 mm 13/16" TO 1.1/2" ₹	SIZE RANGE 41 mm TO 100 mm 1.9/16" TO 4" ₹	SIZE RANGE 101 mm TO 200 mm 4.1/8" TO 8" ₹
THREAD PLUG	250	380	580	880
THREAD RING GO OR NOT GO	330	650	1130	1980

PARTICULARS	SIZE RANGE 201 mm TO 250 mm 8.1/4" & 10" ₹	SIZE RANGE 251 mm TO 300 mm 10.1/4" & 12" ₹	SIZE RANGE 301 mm TO 350 mm 12.1/4" & 14" ₹	SIZE RANGE 351 mm TO 400 mm 14.1/4" & 16" ₹
S/E THREAD PLUG	900	1200	1700	2400
THREAD RING GO OR NOT GO	2600	3200	4200	5600

## B. TAPER THREAD GAUGES

PARTICULARS	SIZE RANGE UP TO 3/4" ₹	SIZE RANGE 1" TO 1.1/2" ₹	SIZE RANGE 2" TO 4" ₹	SIZE RANGE 5" TO 8" ₹
TAPER THREAD PLUG	600	760	1410	1760
TAPER THREAD RING	1020	1590	2080	2530

## C. PARALLEL PLAIN GAUGES

PARTICULARS	SIZE RANGE UP TO 20 mm ₹	SIZE RANGE 21 mm TO 40 mm ₹	SIZE RANGE 41 mm TO 100 mm ₹	SIZE RANGE 101 mm TO 200 mm ₹
D/E PLAIN PLUG GO AND NOT GO	150	230	350	530
PLAIN RING GO OR NOT GO	250	380	630	950

PARTICULARS	SIZE RANGE 201 mm & 250 mm ₹	SIZE RANGE 251 mm TO 300 mm ₹	SIZE RANGE 301 mm TO 350 mm ₹	SIZE RANGE 351 mm TO 400 mm ₹
S/E PLAIN PLUG GO OR NOT GO	750	950	1200	1500
PLAIN RING GO OR NOT GO	1400	1800	2500	3200

## D. TAPER PLAIN GAUGES

PARTICULARS	SIZE RANGE UP TO 20 mm ₹	SIZE RANGE 21 mm TO 40 mm ₹	SIZE RANGE 41 mm TO 60 mm ₹	SIZE RANGE 61 mm TO 100 mm ₹
TAPER PLAIN PLUG	360	530	850	1060
TAPER PLAIN RING	620	960	1240	-

PARTICULARS	SIZE RANGE 101 mm & 250 mm ₹	SIZE RANGE 201 mm TO 250 mm ₹	SIZE RANGE 251 mm TO 300 mm ₹	
TAPER PLAIN PLUG	1390	1500	1750	
TAPER PLAIN RING	-	-	-	

### NOTES :

- 1 Environmental condition maintained during calibration : 20 °C ± 1 °C and RH 50 ± 10%.
- 2 Calibration Laboratory is equipped with an extensive range of measuring instruments in the field of length measurement.
- 3 Measuring equipment are traceable to National / International Length Standards.
- 4 Calibration services with NABL accreditation (ISO/IEC 17025 : 2005(E)) are also provided on request.
- 5 Calibration of special Thread Gauges (ACME, TRAPEZOIDAL, BUTTRESS, ROUND THREAD, TAPER ABOVE 8", etc.) on request.



**EXTERNAL MICROMETERS**

SIZE RANGE	READING 0.010 mm (0.001 inch) ₹	READING 0.001 mm (0.0001 inch) ₹	SIZE RANGE	READING 0.010 mm (0.001 inch) ₹	READING 0.001 mm (0.0001 inch) ₹
0 - 25 mm 0 - 1 inch	270	330	125 - 150 mm 5 inch - 6 inch	620	740
25 - 50 mm 1 inch - 2 inch	350	420	150 - 175 mm 6 inch - 7 inch	860	1030
50 - 75 mm 2 inch - 3 inch	430	520	175 - 200 mm 7 inch - 8 inch	1110	1320
75 - 100 mm 3 inch - 4 inch	510	600	200 - 300 mm 8 inch - 12 inch	2750	3190
100 - 125 mm 4 inch - 5 inch	560	670	300 - 400 mm 12 inch - 20 inch	2900 12 inch - 16 inch	3300
			400 - 500 mm 16 inch - 20 inch	2900	3300

**CALIBRATION CHARGES FOR DIGITAL EXTERNAL MICROMETERS**

RANGE	₹	RANGE	₹
0 - 25 mm (0.001mm)	380	125 - 150 mm (0.001mm)	880
25 - 50 mm (0.001mm)	470	150 - 175 mm (0.001mm)	1120
50 - 75 mm (0.001mm)	560	175 - 200 mm (0.001mm)	1450
75 - 100 mm (0.001mm)	700	200 - 300 mm (0.001mm)	3300
100 - 125 mm (0.001mm)	820	300 - 400 mm (0.001mm)	3500
		400 - 500 mm (0.001mm)	3500

**NOTES :**

- 1 Environmental condition maintained during calibration : 20°C ± 1°C and RH 50 ± 10%.
- 2 Calibration Laboratory is equipped with an extensive range of measuring instruments in the field of length measurement.
- 3 Measuring equipments are traceable to National / International Length Standards.
- 4 Calibration services with NABL accreditation (ISO/IEC 17025 : 2005(E)) are also provided on request.
- 5 Calibration of special Micrometers on request.

**PRODUCTS RANGE**

PRODUCT RANGE	
THREAD PLUGS	: 1 mm TO 450 mm
TAPER THREAD PLUGS	: 1/16 inch TO 17 inch ( TAPER 1:16)
THREAD RINGS	: 1 mm TO 500 mm
TAPER THREAD RINGS	: 1/16 inch TO 16 inch ( TAPER 1:16)
FOR SPECIAL THREAD PLUGS AND RINGS INCLUDING ACME, TRAPEZOIDAL, BUTTRESS, ROUND THREAD, ETC PRICES WILL BE FURNISHED AGAINST SPECIFIC ENQUIRIES.	
EXTERNAL MICROMETERS	: 0 TO 1000 mm READING 0.01 mm (READING 0.001 mm UP TO 150 mm) : 0 - 40 inch READING 0.001 inch (READING 0.0001" UP TO 6")
DIGITAL EXTERNAL MICROMETER	: 0 - 200 mm READING 0.001 mm : 0 - 8 inch READING 0.00005 inch
SPECIAL EXTERNAL MICROMETER	: TUBE TYPE, DISC TYPE, POINT TYPE, SPLINE TYPE & BLADE TYPE

**TERMS AND CONDITIONS (for Services)**

1. GST: Extra as applicable
2. PAYMENT : 100% against Proforma Invoice.
3. DESPATCH : Courier Service
4. FREIGHT : Extra at Actual
5. ANY OTHER LEVY : Extra to your account
6. This price list is subject to alteration without any notice & cancels all our previous price lists.



# GOKUL

TRADERS

FOR EVERY INDUSTRIAL NEED

## **GOKUL TRADERS**

H.O.: 983, Raviwar Peth,  
Laxmi Road, Pune-411002.

**Ph: +91-7972969901**

**9371012756**

mail: [info@gokultraders.com](mailto:info@gokultraders.com)

Website:

[www.gokultraders.com](http://www.gokultraders.com)