



Universal Gauge Sets

These gauges are used for measuring internal and external dimensions, such as grooves, shoulders, recesses, threads, tapers, gears, splines, hole centres, a wide range of measuring contacts are available to enable measurement of various features.



Features

- Internal and external measurement
- Range 30-255mm Internal / 0-220mm External with 20mm Anvil Travel
- Large measuring range possible 0-3000mm (0-118")
- Extensions available 150mm (Steel) 500mm and 1000mm (Carbon Fibre)
- Constant measuring force
- Supplied with digital readout
- Large range of accessories for standard measurement of threads, grooves, splines, diameters, lengths, shallow spigots and recess diameters etc
- Special anvil designs available P.O.A

UNIVERSAL GAUGE SETS

Code No	Description
TGUSET1	Large Set with Box
TGUSET1-W	Large Set with Box, without Indicator
TGUSET2	Small Set with Box
TGUSET2-W	Small Set with Box, without Indicator

SET CONTENTS - TGUSET1

Code No	Description
TGU1000-XT	Universal with Box but without Indicator or Accessories
TGUA001-AN	Digital / Analogue Indicator 25mm / 0.001mm c/w COWL
TGUA006	Measuring arms 50mm (Pair)
TGUA007	Measuring Arms 75mm (Pair)
TGUA008	Measuring Arms 100mm (Pair)
TGUA013	20mm Disc Anvils for measuring grooves (Pair)
TGUA014	12mm Disc Anvils Int/Ext for measuring grooves (Pair)
TGUA011	Shoulder anvils flat outside spigot diameter (Pair)
TGUA012	Semi-cylindrical anvils for inside register diameters (Pair)
TGUA010	Depth-stops (Pair)
TGUA003	Clamping inserts (Pair)
TGUA004	Flat Measuring Anvil (Pair)
TGUA005	Spherical contacts (Pair)
TGUA009	Mounting Attachment (Pair)

SET CONTENTS - TGUSET2

Code No	Description
TGU1000-XT	Universal with Box but without Indicator or Accessories
TGUA001-AN	Digital / Analogue Indicator 25mm / 0.001mm c/w COWL
TGUA003	Clamping inserts (Pair)
TGUA005	Spherical contacts (Pair)
TGUA006	Measuring arms 50mm (Pair)
TGUA010	Depth-stops (Pair)



TGUSET1



TGUSET2

Universal Gauge and Accessories

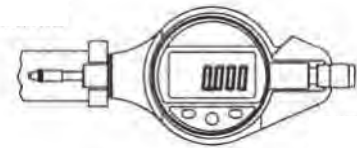
Digital Indicator and Protective Shroud

Code No
TGUA001-AN



Note: A denotes Analogue

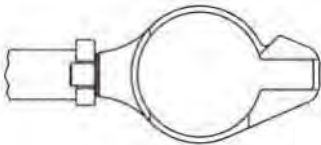
Code No
TGUA001
TGUA001-BT



Note: BT denotes Bluetooth

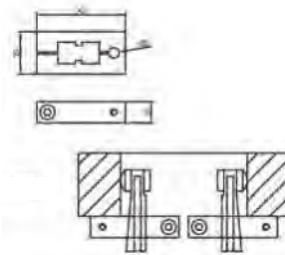
Protective Shroud for Dial/Digital Indicator

Code No
TGUA002



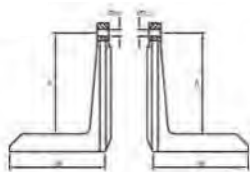
Adjustable Depth Stops for Measuring Arms

Code No
TGUA010



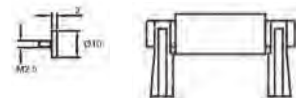
Measuring Arms

Dimn - A	Code No
50	TGUA006
75	TGUA007
100	TGUA008



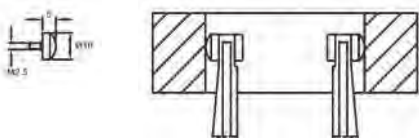
Flat Tips

Code No
TGUA004



Spherical Tips

Code No
TGUA005



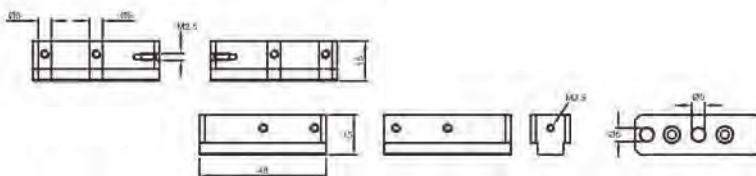
Clamping Insert

Code No
TGUA003



Mounting Attachments for use with the following Anvils

Code No
TGUA009

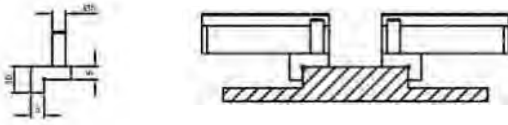




Universal Gauge and Accessories

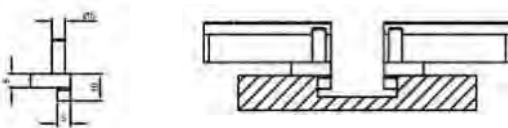
Shoulder Anvils Flat Outside Spigot Diameter

Code No
TGUA011



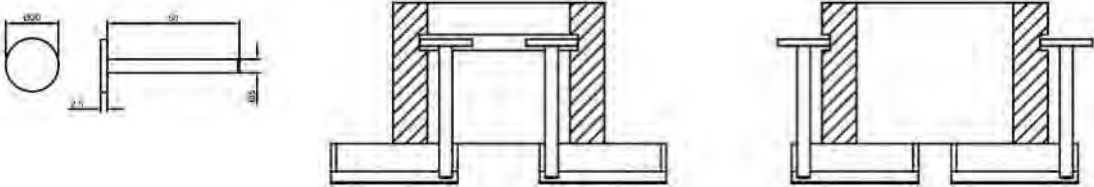
Semi-Cylindrical Anvils for Inside Register Diameters

Code No
TGUA012



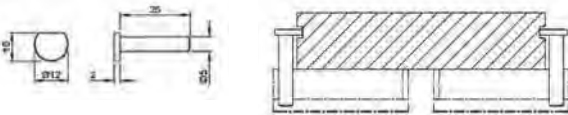
DISC Anvils for measuring Groove Diameter

Code No
TGUA013



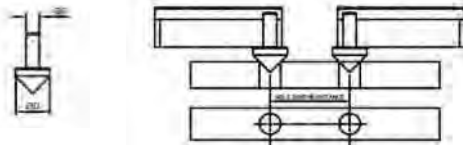
DISC Anvils for measuring Groove Diameter

Code No
TGUA014



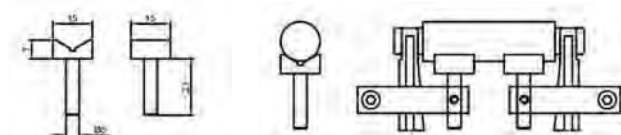
Cone Anvils for Measuring Hole Centre Distance

Code No	Dimn - D
TGUA019	13
TGUA020	25
TGUA021	50



Vee Support for Length Measurement

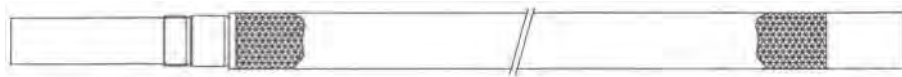
Code No
TGUA022



Universal Gauge and Accessories

UNIVERSAL GAUGING EXTENSIONS

Code No	Description	Length (mm)
TGUA035	Extension Steel	150
TGUA036	Extension Carbon Fibre	500
TGUA037	Extension Carbon Fibre	1000



Universal Setting Gauge up to 1550 Internal and 1650 External



The Universal Gauge can also be used for thread measurement. Thread rolls would be formed to suit requirements.



Watch our video!

Scan the QR code to learn more about the features and capabilities of the Universal Gauge

