

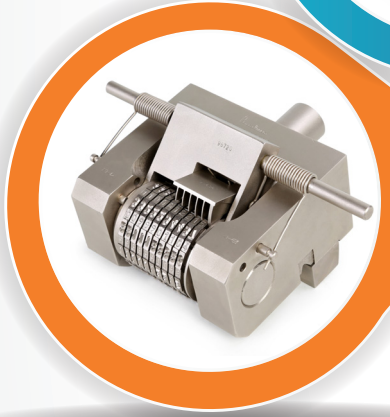
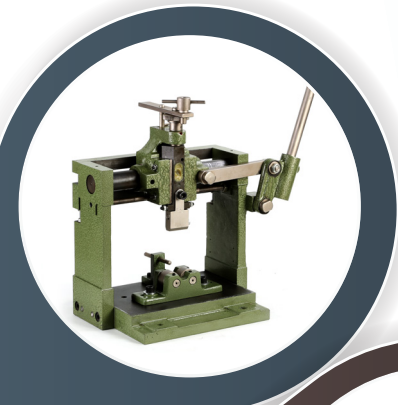
Bradma®

Automating The Future



PRICE LIST

EFFECTIVE 01.08.2023



CONVENTIONAL MARKING SYSTEMS



Forbes & Company Limited

Conventional Marking Systems

ALL RATES ARE IN RUPEES PER PIECE (Excl. of GST)

SAP Code	Description	List Price ₹	MOQ
FCA0100001	T062 IST 1/16" {CHR "A" }	113	50
FCA0100002	T062 IST 1/16" {CHR "B" }	113	50
FCA0100003	T062 IST 1/16" {CHR "C" }	113	50
FCA0100004	T062 IST 1/16" {CHR "D" }	113	50
FCA0100005	T062 IST 1/16" {CHR "E" }	113	50
FCA0100006	T062 IST 1/16" {CHR "F" }	113	50
FCA0100007	T062 IST 1/16" {CHR "G" }	113	50
FCA0100008	T062 IST 1/16" {CHR "H" }	113	50
FCA0100009	T062 IST 1/16" {CHR "I" }	113	50
FCA0100010	T062 IST 1/16" {CHR "J" }	113	50
FCA0100011	T062 IST 1/16" {CHR "K" }	113	50
FCA0100012	T062 IST 1/16" {CHR "L" }	113	50
FCA0100013	T062 IST 1/16" {CHR "M" }	113	50
FCA0100014	T062 IST 1/16" {CHR "N" }	113	50
FCA0100015	T062 IST 1/16" {CHR "O" }	113	50
FCA0100016	T062 IST 1/16" {CHR "P" }	113	50
FCA0100017	T062 IST 1/16" {CHR "Q" }	113	50
FCA0100018	T062 IST 1/16" {CHR "R" }	113	50
FCA0100019	T062 IST 1/16" {CHR "S" }	113	50
FCA0100020	T062 IST 1/16" {CHR "T" }	113	50
FCA0100021	T062 IST 1/16" {CHR "U" }	113	50
FCA0100022	T062 IST 1/16" {CHR "V" }	113	50
FCA0100023	T062 IST 1/16" {CHR "W" }	113	50
FCA0100024	T062 IST 1/16" {CHR "X" }	113	50
FCA0100025	T062 IST 1/16" {CHR "Y" }	113	50
FCA0100026	T062 IST 1/16" {CHR "Z" }	113	50

ALL RATES ARE IN RUPEES PER PIECE (Excl. of GST)

SAP Code	Description	List Price ₹	MOQ
FCA0100027	T062 IST 1/16" {CHR "1" }	113	50
FCA0100028	T062 IST 1/16" {CHR "2" }	113	50
FCA0100029	T062 IST 1/16" {CHR "3" }	113	50
FCA0100030	T062 IST 1/16" {CHR "4" }	113	50
FCA0100031	T062 IST 1/16" {CHR "5" }	113	50
FCA0100032	T062 IST 1/16" {CHR "6" }	113	50
FCA0100033	T062 IST 1/16" {CHR "7" }	113	50
FCA0100034	T062 IST 1/16" {CHR "8" }	113	50
FCA0100035	T062 IST 1/16" {CHR "9" }	113	50
FCA0100036	T062 IST 1/16" {CHR "DASH" }	113	50
FCA0100037	T062 IST 1/16" {CHR "F.S." }	113	50
FCA0100038	T062 IST 1/16" {CHR "DEC" }	113	50
FCA0100039	T062 IST 1/16" {CHR "STROK" }	113	50
FCA0100040	T062 IST 1/16" {CHR "&" }	113	50
FCA0100041	T093 IST 3/32" {CHR "A" }	118	15
FCA0100042	T093 IST 3/32" {CHR "B" }	118	15
FCA0100043	T093 IST 3/32" {CHR "C" }	118	15
FCA0100044	T093 IST 3/32" {CHR "D" }	118	15
FCA0100045	T093 IST 3/32" {CHR "E" }	118	15
FCA0100046	T093 IST 3/32" {CHR "F" }	118	15
FCA0100047	T093 IST 3/32" {CHR "G" }	118	15
FCA0100048	T093 IST 3/32" {CHR "H" }	118	15
FCA0100049	T093 IST 3/32" {CHR "I" }	118	15
FCA0100050	T093 IST 3/32" {CHR "J" }	118	15
FCA0100051	T093 IST 3/32" {CHR "K" }	118	15
FCA0100052	T093 IST 3/32" {CHR "L" }	118	15

Conventional Marking Systems

ALL RATES ARE IN RUPEES PER PIECE (Excl. of GST)

SAP Code	Description	List Price ₹	MOQ
FCA0100053	T093 IST 3/32" {CHR "M" }	118	15
FCA0100054	T093 IST 3/32" {CHR "N" }	118	15
FCA0100055	T093 IST 3/32" {CHR "O" }	118	15
FCA0100056	T093 IST 3/32" {CHR "P" }	118	15
FCA0100057	T093 IST 3/32" {CHR "Q" }	118	15
FCA0100058	T093 IST 3/32" {CHR "R" }	118	15
FCA0100059	T093 IST 3/32" {CHR "S" }	118	15
FCA0100060	T093 IST 3/32" {CHR "T" }	118	15
FCA0100061	T093 IST 3/32" {CHR "U" }	118	15
FCA0100062	T093 IST 3/32" {CHR "V" }	118	15
FCA0100063	T093 IST 3/32" {CHR "W" }	118	15
FCA0100064	T093 IST 3/32" {CHR "X" }	118	15
FCA0100065	T093 IST 3/32" {CHR "Y" }	118	15
FCA0100066	T093 IST 3/32" {CHR "Z" }	118	15
FCA0100067	T093 IST 3/32" {CHR "1" }	118	15
FCA0100068	T093 IST 3/32" {CHR "2" }	118	15
FCA0100069	T093 IST 3/32" {CHR "3" }	118	15
FCA0100070	T093 IST 3/32" {CHR "4" }	118	15
FCA0100071	T093 IST 3/32" {CHR "5" }	118	15
FCA0100072	T093 IST 3/32" {CHR "6" }	118	15
FCA0100073	T093 IST 3/32" {CHR "7" }	118	15
FCA0100074	T093 IST 3/32" {CHR "8" }	118	15
FCA0100075	T093 IST 3/32" {CHR "9" }	118	15
FCA0100076	T093 IST 3/32" {CHR "DASH" }	118	15
FCA0100077	T093 IST 3/32" {CHR "F.S." }	118	15
FCA0100078	T093 IST 3/32" {CHR "DEC" }	118	15

ALL RATES ARE IN RUPEES PER PIECE (Excl. of GST)

SAP Code	Description	List Price ₹	MOQ
FCA0100079	T093 IST 3/32" {CHR "STROK" }	118	15
FCA0100080	T093 IST 3/32" {CHR "&" }	118	15
FCA0100081	T125 IST 1/8" {CHR "A" }	121	15
FCA0100082	T125 IST 1/8" {CHR "B" }	121	15
FCA0100083	T125 IST 1/8" {CHR "C" }	121	15
FCA0100084	T125 IST 1/8" {CHR "D" }	121	15
FCA0100085	T125 IST 1/8" {CHR "E" }	121	15
FCA0100086	T125 IST 1/8" {CHR "F" }	121	15
FCA0100087	T125 IST 1/8" {CHR "G" }	121	15
FCA0100088	T125 IST 1/8" {CHR "H" }	121	15
FCA0100089	T125 IST 1/8" {CHR "I" }	121	15
FCA0100090	T125 IST 1/8" {CHR "J" }	121	15
FCA0100091	T125 IST 1/8" {CHR "K" }	121	15
FCA0100092	T125 IST 1/8" {CHR "L" }	121	15
FCA0100093	T125 IST 1/8" {CHR "M" }	121	15
FCA0100094	T125 IST 1/8" {CHR "N" }	121	15
FCA0100095	T125 IST 1/8" {CHR "O" }	121	15
FCA0100096	T125 IST 1/8" {CHR "P" }	121	15
FCA0100097	T125 IST 1/8" {CHR "Q" }	121	15
FCA0100098	T125 IST 1/8" {CHR "R" }	121	15
FCA0100099	T125 IST 1/8" {CHR "S" }	121	15
FCA0100100	T125 IST 1/8" {CHR "T" }	121	15
FCA0100101	T125 IST 1/8" {CHR "U" }	121	15
FCA0100102	T125 IST 1/8" {CHR "V" }	121	15
FCA0100103	T125 IST 1/8" {CHR "W" }	121	15
FCA0100104	T125 IST 1/8" {CHR "X" }	121	15

Conventional Marking Systems

ALL RATES ARE IN RUPEES PER PIECE (Excl. of GST)

SAP Code	Description	List Price ₹	MOQ
FCA0100105	T125 IST 1/8" {CHR "Y" }	121	15
FCA0100106	T125 IST 1/8" {CHR "Z" }	121	15
FCA0100107	T125 IST 1/8" {CHR "1" }	121	15
FCA0100108	T125 IST 1/8" {CHR "2" }	121	15
FCA0100109	T125 IST 1/8" {CHR "3" }	121	15
FCA0100110	T125 IST 1/8" {CHR "4" }	121	15
FCA0100111	T125 IST 1/8" {CHR "5" }	121	15
FCA0100112	T125 IST 1/8" {CHR "6" }	121	15
FCA0100113	T125 IST 1/8" {CHR "7" }	121	15
FCA0100114	T125 IST 1/8" {CHR "8" }	121	15
FCA0100115	T125 IST 1/8" {CHR "9" }	121	15
FCA0100116	T125 IST 1/8" {CHR "DASH" }	121	15
FCA0100117	T125 IST 1/8" {CHR "F.S." }	121	15
FCA0100118	T125 IST 1/8" {CHR "DEC" }	121	15
FCA0100119	T125 IST 1/8" {CHR "STROK" }	121	15
FCA0100120	T125 IST 1/8" {CHR "&" }	121	15
FCA0100121	S062 SPACER SIZE 1/16"	71	50
FCA0100122	S093 SPACER SIZE 3/32"	71	15
FCA0100123	S125 SPACER SIZE 1/8"	77	15
FCA0100124	T187 IST 3/16" {CHR "A" }	200	15
FCA0100125	T187 IST 3/16" {CHR "B" }	200	12
FCA0100126	T187 IST 3/16" {CHR "C" }	200	12
FCA0100127	T187 IST 3/16" {CHR "D" }	200	12
FCA0100128	T187 IST 3/16" {CHR "E" }	200	12
FCA0100129	T187 IST 3/16" {CHR "F" }	200	12
FCA0100130	T187 IST 3/16" {CHR "G" }	200	12

ALL RATES ARE IN RUPEES PER PIECE (Excl. of GST)

SAP Code	Description	List Price ₹	MOQ
FCA0100131	T187 IST 3/16" {CHR "H" }	200	12
FCA0100132	T187 IST 3/16" {CHR "I" }	200	12
FCA0100133	T187 IST 3/16" {CHR "J" }	200	12
FCA0100134	T187 IST 3/16" {CHR "K" }	200	12
FCA0100135	T187 IST 3/16" {CHR "L" }	200	12
FCA0100136	T187 IST 3/16" {CHR "M" }	200	12
FCA0100137	T187 IST 3/16" {CHR "N" }	200	12
FCA0100138	T187 IST 3/16" {CHR "O" }	200	12
FCA0100139	T187 IST 3/16" {CHR "P" }	200	12
FCA0100140	T187 IST 3/16" {CHR "Q" }	200	12
FCA0100141	T187 IST 3/16" {CHR "R" }	200	12
FCA0100142	T187 IST 3/16" {CHR "S" }	200	12
FCA0100143	T187 IST 3/16" {CHR "T" }	200	12
FCA0100144	T187 IST 3/16" {CHR "U" }	200	12
FCA0100145	T187 IST 3/16" {CHR "V" }	200	12
FCA0100146	T187 IST 3/16" {CHR "W" }	200	12
FCA0100147	T187 IST 3/16" {CHR "X" }	200	12
FCA0100148	T187 IST 3/16" {CHR "Y" }	200	12
FCA0100149	T187 IST 3/16" {CHR "Z" }	200	12
FCA0100150	T187 IST 3/16" {CHR "1" }	200	12
FCA0100151	T187 IST 3/16" {CHR "2" }	200	12
FCA0100152	T187 IST 3/16" {CHR "3" }	200	12
FCA0100153	T187 IST 3/16" {CHR "4" }	200	12
FCA0100154	T187 IST 3/16" {CHR "5" }	200	12
FCA0100155	T187 IST 3/16" {CHR "6" }	200	12
FCA0100156	T187 IST 3/16" {CHR "7" }	200	12

Conventional Marking Systems

ALL RATES ARE IN RUPEES PER PIECE (Excl. of GST)

SAP Code	Description	List Price ₹	MOQ
FCA0100157	T187 IST 3/16" {CHR "8" }	200	12
FCA0100158	T187 IST 3/16" {CHR "9" }	200	12
FCA0100159	T187 IST 3/16" {CHR "DASH" }	200	12
FCA0100160	T187 IST 3/16" {CHR "F.S." }	200	12
FCA0100161	T187 IST 3/16" {CHR "DEC" }	200	12
FCA0100162	T187 IST 3/16" {CHR "STROK" }	200	12
FCA0100163	T187 IST 3/16" {CHR "&" }	200	12
FCA0100164	2754 BOX WOODEN FOR 1/16" IST	1,690	0
FCA0100165	T250 IST 1/4" {CHR "A" }	203	12
FCA0100166	T250 IST 1/4" {CHR "B" }	203	12
FCA0100167	T250 IST 1/4" {CHR "C" }	203	12
FCA0100168	T250 IST 1/4" {CHR "D" }	203	12
FCA0100169	T250 IST 1/4" {CHR "E" }	203	12
FCA0100170	T250 IST 1/4" {CHR "F" }	203	12
FCA0100171	T250 IST 1/4" {CHR "G" }	203	12
FCA0100172	T250 IST 1/4" {CHR "H" }	203	12
FCA0100173	T250 IST 1/4" {CHR "I" }	203	12
FCA0100174	T250 IST 1/4" {CHR "J" }	203	12
FCA0100175	T250 IST 1/4" {CHR "K" }	203	12
FCA0100176	T250 IST 1/4" {CHR "L" }	203	12
FCA0100177	T250 IST 1/4" {CHR "M" }	203	12
FCA0100178	T250 IST 1/4" {CHR "N" }	203	12
FCA0100179	T250 IST 1/4" {CHR "O" }	203	12
FCA0100180	T250 IST 1/4" {CHR "P" }	203	12
FCA0100181	T250 IST 1/4" {CHR "Q" }	203	12
FCA0100182	T250 IST 1/4" {CHR "R" }	203	12

ALL RATES ARE IN RUPEES PER PIECE (Excl. of GST)

SAP Code	Description	List Price ₹	MOQ
FCA0100183	T250 IST 1/4" {CHR "S" }	203	12
FCA0100184	T250 IST 1/4" {CHR "T" }	203	12
FCA0100185	T250 IST 1/4" {CHR "U" }	203	12
FCA0100186	T250 IST 1/4" {CHR "V" }	203	12
FCA0100187	T250 IST 1/4" {CHR "W" }	203	12
FCA0100188	T250 IST 1/4" {CHR "X" }	203	12
FCA0100189	T250 IST 1/4" {CHR "Y" }	203	12
FCA0100190	T250 IST 1/4" {CHR "Z" }	203	12
FCA0100191	T250 IST 1/4" {CHR "1" }	203	12
FCA0100192	T250 IST 1/4" {CHR "2" }	203	12
FCA0100193	T250 IST 1/4" {CHR "3" }	203	12
FCA0100194	T250 IST 1/4" {CHR "4" }	203	12
FCA0100195	T250 IST 1/4" {CHR "5" }	203	12
FCA0100196	T250 IST 1/4" {CHR "6" }	203	12
FCA0100197	T250 IST 1/4" {CHR "7" }	203	12
FCA0100198	T250 IST 1/4" {CHR "8" }	203	12
FCA0100199	T250 IST 1/4" {CHR "9" }	203	12
FCA0100200	T250 IST 1/4" {CHR "DASH" }	203	12
FCA0100201	T250 IST 1/4" {CHR "F.S." }	203	12
FCA0100202	T250 IST 1/4" {CHR "DEC" }	203	12
FCA0100203	T250 IST 1/4" {CHR "STROK" }	203	12
FCA0100204	T250 IST 1/4" {CHR "&" }	203	12
FCA0100205	BOX WOODEN FOR 8,10,3/8"MM IST	2,368	0
FCA0100206	T375 IST 3/8" {CHR "A" }	371	0
FCA0100207	T375 IST 3/8" {CHR "B" }	371	0
FCA0100208	T375 IST 3/8" {CHR "C" }	371	0

Conventional Marking Systems

ALL RATES ARE IN RUPEES PER PIECE (Excl. of GST)

SAP Code	Description	List Price ₹	MOQ
FCA0100209	T375 IST 3/8" {CHR "D" }	371	0
FCA0100210	T375 IST 3/8" {CHR "E" }	371	0
FCA0100211	T375 IST 3/8" {CHR "F" }	371	0
FCA0100212	T375 IST 3/8" {CHR "G" }	371	0
FCA0100213	T375 IST 3/8" {CHR "H" }	371	0
FCA0100214	T375 IST 3/8" {CHR "I" }	371	0
FCA0100215	T375 IST 3/8" {CHR "J" }	371	0
FCA0100216	T375 IST 3/8" {CHR "K" }	371	0
FCA0100217	T375 IST 3/8" {CHR "L" }	371	0
FCA0100218	T375 IST 3/8" {CHR "M" }	371	0
FCA0100219	T375 IST 3/8" {CHR "N" }	371	0
FCA0100220	T375 IST 3/8" {CHR "O" }	371	0
FCA0100221	T375 IST 3/8" {CHR "P" }	371	0
FCA0100222	T375 IST 3/8" {CHR "Q" }	371	0
FCA0100223	T375 IST 3/8" {CHR "R" }	371	0
FCA0100224	T375 IST 3/8" {CHR "S" }	371	0
FCA0100225	T375 IST 3/8" {CHR "T" }	371	0
FCA0100226	T375 IST 3/8" {CHR "U" }	371	0
FCA0100227	T375 IST 3/8" {CHR "V" }	371	0
FCA0100228	T375 IST 3/8" {CHR "W" }	371	0
FCA0100229	T375 IST 3/8" {CHR "X" }	371	0
FCA0100230	T375 IST 3/8" {CHR "Y" }	371	0
FCA0100231	T375 IST 3/8" {CHR "Z" }	371	0
FCA0100232	T375 IST 3/8" {CHR "1" }	371	0
FCA0100233	T375 IST 3/8" {CHR "2" }	371	0
FCA0100234	T375 IST 3/8" {CHR "3" }	371	0

ALL RATES ARE IN RUPEES PER PIECE (Excl. of GST)

SAP Code	Description	List Price ₹	MOQ
FCA0100235	T375 IST 3/8" {CHR "4" }	371	0
FCA0100236	T375 IST 3/8" {CHR "5" }	371	0
FCA0100237	T375 IST 3/8" {CHR "6" }	371	0
FCA0100238	T375 IST 3/8" {CHR "7" }	371	0
FCA0100239	T375 IST 3/8" {CHR "8" }	371	0
FCA0100240	T375 IST 3/8" {CHR "9" }	371	0
FCA0100241	T375 IST 3/8" {CHR "DASH" }	371	0
FCA0100242	T375 IST 3/8" {CHR "F.S." }	371	0
FCA0100243	T375 IST 3/8" {CHR "DEC" }	371	0
FCA0100244	T375 IST 3/8" {CHR "STROK" }	371	0
FCA0100245	T375 IST 3/8" {CHR "&" }	371	0
FCA0100246	T010 IST 1MM {CHR "A" }	135	20
FCA0100247	T010 IST 1MM {CHR "B" }	135	20
FCA0100248	T010 IST 1MM {CHR "C" }	135	20
FCA0100249	T010 IST 1MM {CHR "D" }	135	20
FCA0100250	T010 IST 1MM {CHR "E" }	135	20
FCA0100251	T010 IST 1MM {CHR "F" }	135	20
FCA0100252	T010 IST 1MM {CHR "G" }	135	20
FCA0100253	T010 IST 1MM {CHR "H" }	135	20
FCA0100254	T010 IST 1MM {CHR "I" }	135	20
FCA0100255	T010 IST 1MM {CHR "J" }	135	20
FCA0100256	T010 IST 1MM {CHR "K" }	135	20
FCA0100257	T010 IST 1MM {CHR "L" }	135	20
FCA0100258	T010 IST 1MM {CHR "M" }	135	20
FCA0100259	T010 IST 1MM {CHR "N" }	135	20
FCA0100260	T010 IST 1MM {CHR "O" }	135	20

Conventional Marking Systems

ALL RATES ARE IN RUPEES PER PIECE (Excl. of GST)

SAP Code	Description	List Price ₹	MOQ
FCA0100261	T010 IST 1MM {CHR "P" }	135	20
FCA0100262	T010 IST 1MM {CHR "Q" }	135	20
FCA0100263	T010 IST 1MM {CHR "R" }	135	20
FCA0100264	T010 IST 1MM {CHR "S" }	135	20
FCA0100265	T010 IST 1MM {CHR "T" }	135	20
FCA0100266	T010 IST 1MM {CHR "U" }	135	20
FCA0100267	T010 IST 1MM {CHR "V" }	135	20
FCA0100268	T010 IST 1MM {CHR "W" }	135	20
FCA0100269	T010 IST 1MM {CHR "X" }	135	20
FCA0100270	T010 IST 1MM {CHR "Y" }	135	20
FCA0100271	T010 IST 1MM {CHR "Z" }	135	20
FCA0100272	T010 IST 1MM {CHR "1" }	135	20
FCA0100273	T010 IST 1MM {CHR "2" }	135	20
FCA0100274	T010 IST 1MM {CHR "3" }	135	20
FCA0100275	T010 IST 1MM {CHR "4" }	135	20
FCA0100276	T010 IST 1MM {CHR "5" }	135	20
FCA0100277	T010 IST 1MM {CHR "6" }	135	20
FCA0100278	T010 IST 1MM {CHR "7" }	135	20
FCA0100279	T010 IST 1MM {CHR "8" }	135	20
FCA0100280	T010 IST 1MM {CHR "9" }	135	20
FCA0100281	T010 IST 1MM {CHR "DASH" }	135	20
FCA0100282	T010 IST 1MM {CHR "F.S." }	135	20
FCA0100283	T010 IST 1MM {CHR "DEC" }	135	20
FCA0100284	T010 IST 1MM {CHR "STROK" }	135	20
FCA0100285	T010 IST 1MM {CHR "&" }	135	20
FCA0100286	6RTN2 RTN ASSY HAND 2MM 6WHEELS	19,595	2

ALL RATES ARE IN RUPEES PER PIECE (Excl. of GST)

SAP Code	Description	List Price ₹	MOQ
FCA0100287	T020 IST 2MM {CHR "A" }	115	15
FCA0100288	T020 IST 2MM {CHR "B" }	115	15
FCA0100289	T020 IST 2MM {CHR "C" }	115	15
FCA0100290	T020 IST 2MM {CHR "D" }	115	15
FCA0100291	T020 IST 2MM {CHR "E" }	115	15
FCA0100292	T020 IST 2MM {CHR "F" }	115	15
FCA0100293	T020 IST 2MM {CHR "G" }	115	15
FCA0100294	T020 IST 2MM {CHR "H" }	115	15
FCA0100295	T020 IST 2MM {CHR "I" }	115	15
FCA0100296	T020 IST 2MM {CHR "J" }	115	15
FCA0100297	T020 IST 2MM {CHR "K" }	115	15
FCA0100298	T020 IST 2MM {CHR "L" }	115	15
FCA0100299	T020 IST 2MM {CHR "M" }	115	15
FCA0100300	T020 IST 2MM {CHR "N" }	115	15
FCA0100301	T020 IST 2MM {CHR "O" }	115	15
FCA0100302	T020 IST 2MM {CHR "P" }	115	15
FCA0100303	T020 IST 2MM {CHR "Q" }	115	15
FCA0100304	T020 IST 2MM {CHR "R" }	115	15
FCA0100305	T020 IST 2MM {CHR "S" }	115	15
FCA0100306	T020 IST 2MM {CHR "T" }	115	15
FCA0100307	T020 IST 2MM {CHR "U" }	115	15
FCA0100308	T020 IST 2MM {CHR "V" }	115	15
FCA0100309	T020 IST 2MM {CHR "W" }	115	15
FCA0100310	T020 IST 2MM {CHR "X" }	115	15
FCA0100311	T020 IST 2MM {CHR "Y" }	115	15
FCA0100312	T020 IST 2MM {CHR "Z" }	115	15

Conventional Marking Systems

ALL RATES ARE IN RUPEES PER PIECE (Excl. of GST)

SAP Code	Description	List Price ₹	MOQ
FCA0100313	T020 IST 2MM {CHR "1" }	115	15
FCA0100314	T020 IST 2MM {CHR "2" }	115	15
FCA0100315	T020 IST 2MM {CHR "3" }	115	15
FCA0100316	T020 IST 2MM {CHR "4" }	115	15
FCA0100317	T020 IST 2MM {CHR "5" }	115	15
FCA0100318	T020 IST 2MM {CHR "6" }	115	15
FCA0100319	T020 IST 2MM {CHR "7" }	115	15
FCA0100320	T020 IST 2MM {CHR "8" }	115	15
FCA0100321	T020 IST 2MM {CHR "9" }	115	15
FCA0100322	T020 IST 2MM {CHR "DASH" }	115	15
FCA0100323	T020 IST 2MM {CHR "F.S." }	115	15
FCA0100324	T020 IST 2MM {CHR "DEC" }	115	15
FCA0100325	T020 IST 2MM {CHR "STROK" }	115	15
FCA0100326	T020 IST 2MM {CHR "&" }	115	15
FCA0100327	T030 IST 3MM {CHR "A" }	120	15
FCA0100328	T030 IST 3MM {CHR "B" }	120	15
FCA0100329	T030 IST 3MM {CHR "C" }	120	15
FCA0100330	T030 IST 3MM {CHR "D" }	120	15
FCA0100331	T030 IST 3MM {CHR "E" }	120	15
FCA0100332	T030 IST 3MM {CHR "F" }	120	15
FCA0100333	T030 IST 3MM {CHR "G" }	120	15
FCA0100334	T030 IST 3MM {CHR "H" }	120	15
FCA0100335	T030 IST 3MM {CHR "I" }	120	15
FCA0100336	T030 IST 3MM {CHR "J" }	120	15
FCA0100337	T030 IST 3MM {CHR "K" }	120	15
FCA0100338	T030 IST 3MM {CHR "L" }	120	15

ALL RATES ARE IN RUPEES PER PIECE (Excl. of GST)

SAP Code	Description	List Price ₹	MOQ
FCA0100339	T030 IST 3MM {CHR "M" }	120	15
FCA0100340	T030 IST 3MM {CHR "N" }	120	15
FCA0100341	T030 IST 3MM {CHR "O" }	120	15
FCA0100342	T030 IST 3MM {CHR "P" }	120	15
FCA0100343	T030 IST 3MM {CHR "Q" }	120	15
FCA0100344	T030 IST 3MM {CHR "R" }	120	15
FCA0100345	T030 IST 3MM {CHR "S" }	120	15
FCA0100346	T030 IST 3MM {CHR "T" }	120	15
FCA0100347	T030 IST 3MM {CHR "U" }	120	15
FCA0100348	T030 IST 3MM {CHR "V" }	120	15
FCA0100349	T030 IST 3MM {CHR "W" }	120	15
FCA0100350	T030 IST 3MM {CHR "X" }	120	15
FCA0100351	T030 IST 3MM {CHR "Y" }	120	15
FCA0100352	T030 IST 3MM {CHR "Z" }	120	15
FCA0100353	T030 IST 3MM {CHR "1" }	120	15
FCA0100354	T030 IST 3MM {CHR "2" }	120	15
FCA0100355	T030 IST 3MM {CHR "3" }	120	15
FCA0100356	T030 IST 3MM {CHR "4" }	120	15
FCA0100357	T030 IST 3MM {CHR "5" }	120	15
FCA0100358	T030 IST 3MM {CHR "6" }	120	15
FCA0100359	T030 IST 3MM {CHR "7" }	120	15
FCA0100360	T030 IST 3MM {CHR "8" }	120	15
FCA0100361	T030 IST 3MM {CHR "9" }	120	15
FCA0100362	T030 IST 3MM {CHR "DASH" }	120	15
FCA0100363	T030 IST 3MM {CHR "F.S." }	120	15
FCA0100364	T030 IST 3MM {CHR "DEC" }	120	15

Conventional Marking Systems

ALL RATES ARE IN RUPEES PER PIECE (Excl. of GST)

SAP Code	Description	List Price ₹	MOQ
FCA0100365	T030 IST 3MM {CHR "STROK" }	120	15
FCA0100366	T030 IST 3MM {CHR "&" }	120	15
FCA0100367	T040 IST 4MM {CHR "A" }	156	15
FCA0100368	T040 IST 4MM {CHR "B" }	156	15
FCA0100369	T040 IST 4MM {CHR "C" }	156	15
FCA0100370	T040 IST 4MM {CHR "D" }	156	15
FCA0100371	T040 IST 4MM {CHR "E" }	156	15
FCA0100372	T040 IST 4MM {CHR "F" }	156	15
FCA0100373	T040 IST 4MM {CHR "G" }	156	15
FCA0100374	T040 IST 4MM {CHR "H" }	156	15
FCA0100375	T040 IST 4MM {CHR "I" }	156	15
FCA0100376	T040 IST 4MM {CHR "J" }	156	15
FCA0100377	T040 IST 4MM {CHR "K" }	156	15
FCA0100378	T040 IST 4MM {CHR "L" }	156	15
FCA0100379	T040 IST 4MM {CHR "M" }	156	15
FCA0100380	T040 IST 4MM {CHR "N" }	156	15
FCA0100381	T040 IST 4MM {CHR "O" }	156	15
FCA0100382	T040 IST 4MM {CHR "P" }	156	15
FCA0100383	T040 IST 4MM {CHR "Q" }	156	15
FCA0100384	T040 IST 4MM {CHR "R" }	156	15
FCA0100385	T040 IST 4MM {CHR "S" }	156	15
FCA0100386	T040 IST 4MM {CHR "T" }	156	15
FCA0100387	T040 IST 4MM {CHR "U" }	156	15
FCA0100388	T040 IST 4MM {CHR "V" }	156	15
FCA0100389	T040 IST 4MM {CHR "W" }	156	15
FCA0100390	T040 IST 4MM {CHR "X" }	156	15

ALL RATES ARE IN RUPEES PER PIECE (Excl. of GST)

SAP Code	Description	List Price ₹	MOQ
FCA0100391	T040 IST 4MM {CHR "Y" }	156	15
FCA0100392	T040 IST 4MM {CHR "Z" }	156	15
FCA0100393	T040 IST 4MM {CHR "1" }	156	15
FCA0100394	T040 IST 4MM {CHR "2" }	156	15
FCA0100395	T040 IST 4MM {CHR "3" }	156	15
FCA0100396	T040 IST 4MM {CHR "4" }	156	15
FCA0100397	T040 IST 4MM {CHR "5" }	156	15
FCA0100398	T040 IST 4MM {CHR "6" }	156	15
FCA0100399	T040 IST 4MM {CHR "7" }	156	15
FCA0100400	T040 IST 4MM {CHR "8" }	156	15
FCA0100401	T040 IST 4MM {CHR "9" }	156	15
FCA0100402	T040 IST 4MM {CHR "DASH" }	156	15
FCA0100403	T040 IST 4MM {CHR "F.S." }	156	15
FCA0100404	T040 IST 4MM {CHR "DEC" }	156	15
FCA0100405	T040 IST 4MM {CHR "STROK" }	156	15
FCA0100406	T040 IST 4MM {CHR "&" }	156	15
FCA0100407	T050 IST 5MM {CHR "A" }	161	12
FCA0100408	T050 IST 5MM {CHR "B" }	161	12
FCA0100409	T050 IST 5MM {CHR "C" }	161	12
FCA0100410	T050 IST 5MM {CHR "D" }	161	12
FCA0100411	T050 IST 5MM {CHR "E" }	161	12
FCA0100412	T050 IST 5MM {CHR "F" }	161	12
FCA0100413	T050 IST 5MM {CHR "G" }	161	12
FCA0100414	T050 IST 5MM {CHR "H" }	161	12
FCA0100415	T050 IST 5MM {CHR "I" }	161	12
FCA0100416	T050 IST 5MM {CHR "J" }	161	12

Conventional Marking Systems

ALL RATES ARE IN RUPEES PER PIECE (Excl. of GST)

SAP Code	Description	List Price ₹	MOQ
FCA0100417	T050 IST 5MM {CHR "K" }	161	12
FCA0100418	T050 IST 5MM {CHR "L" }	161	12
FCA0100419	T050 IST 5MM {CHR "M" }	161	12
FCA0100420	T050 IST 5MM {CHR "N" }	161	12
FCA0100421	T050 IST 5MM {CHR "O" }	161	12
FCA0100422	T050 IST 5MM {CHR "P" }	161	12
FCA0100423	T050 IST 5MM {CHR "Q" }	161	12
FCA0100424	T050 IST 5MM {CHR "R" }	161	12
FCA0100425	T050 IST 5MM {CHR "S" }	161	12
FCA0100426	T050 IST 5MM {CHR "T" }	161	12
FCA0100427	T050 IST 5MM {CHR "U" }	161	12
FCA0100428	T050 IST 5MM {CHR "V" }	161	12
FCA0100429	T050 IST 5MM {CHR "W" }	161	12
FCA0100430	T050 IST 5MM {CHR "X" }	161	12
FCA0100431	T050 IST 5MM {CHR "Y" }	161	12
FCA0100432	T050 IST 5MM {CHR "Z" }	161	12
FCA0100433	T050 IST 5MM {CHR "1" }	161	12
FCA0100434	T050 IST 5MM {CHR "2" }	161	12
FCA0100435	T050 IST 5MM {CHR "3" }	161	12
FCA0100436	T050 IST 5MM {CHR "4" }	161	12
FCA0100437	T050 IST 5MM {CHR "5" }	161	12
FCA0100438	T050 IST 5MM {CHR "6" }	161	12
FCA0100439	T050 IST 5MM {CHR "7" }	161	12
FCA0100440	T050 IST 5MM {CHR "8" }	161	12
FCA0100441	T050 IST 5MM {CHR "9" }	161	12
FCA0100442	T050 IST 5MM {CHR "DASH" }	161	12

ALL RATES ARE IN RUPEES PER PIECE (Excl. of GST)

SAP Code	Description	List Price ₹	MOQ
FCA0100443	T050 IST 5MM {CHR "F.S." }	161	12
FCA0100444	T050 IST 5MM {CHR "DEC" }	161	12
FCA0100445	T050 IST 5MM {CHR "STROK" }	161	12
FCA0100446	T050 IST 5MM {CHR "&" }	161	12
FCA0100447	T060 IST 6MM {CHR "A" }	164	12
FCA0100448	T060 IST 6MM {CHR "B" }	164	12
FCA0100449	T060 IST 6MM {CHR "C" }	164	12
FCA0100450	T060 IST 6MM {CHR "D" }	164	12
FCA0100451	T060 IST 6MM {CHR "E" }	164	12
FCA0100452	T060 IST 6MM {CHR "F" }	164	12
FCA0100453	T060 IST 6MM {CHR "G" }	164	12
FCA0100454	T060 IST 6MM {CHR "H" }	164	12
FCA0100455	T060 IST 6MM {CHR "I" }	164	12
FCA0100456	T060 IST 6MM {CHR "J" }	164	12
FCA0100457	T060 IST 6MM {CHR "K" }	164	12
FCA0100458	T060 IST 6MM {CHR "L" }	164	12
FCA0100459	T060 IST 6MM {CHR "M" }	164	12
FCA0100460	T060 IST 6MM {CHR "N" }	164	12
FCA0100461	T060 IST 6MM {CHR "O" }	164	12
FCA0100462	T060 IST 6MM {CHR "P" }	164	12
FCA0100463	T060 IST 6MM {CHR "Q" }	164	12
FCA0100464	T060 IST 6MM {CHR "R" }	164	12
FCA0100465	T060 IST 6MM {CHR "S" }	164	12
FCA0100466	T060 IST 6MM {CHR "T" }	164	12
FCA0100467	T060 IST 6MM {CHR "U" }	164	12
FCA0100468	T060 IST 6MM {CHR "V" }	164	12

Conventional Marking Systems

ALL RATES ARE IN RUPEES PER PIECE (Excl. of GST)

SAP Code	Description	List Price ₹	MOQ
FCA0100469	T060 IST 6MM {CHR "W" }	164	12
FCA0100470	T060 IST 6MM {CHR "X" }	164	12
FCA0100471	T060 IST 6MM {CHR "Y" }	164	12
FCA0100472	T060 IST 6MM {CHR "Z" }	164	12
FCA0100473	T060 IST 6MM {CHR "1" }	164	12
FCA0100474	T060 IST 6MM {CHR "2" }	164	12
FCA0100475	T060 IST 6MM {CHR "3" }	164	12
FCA0100476	T060 IST 6MM {CHR "4" }	164	12
FCA0100477	T060 IST 6MM {CHR "5" }	164	12
FCA0100478	T060 IST 6MM {CHR "6" }	164	12
FCA0100479	T060 IST 6MM {CHR "7" }	164	12
FCA0100480	T060 IST 6MM {CHR "8" }	164	12
FCA0100481	T060 IST 6MM {CHR "9" }	164	12
FCA0100482	T060 IST 6MM {CHR "DASH" }	164	12
FCA0100483	T060 IST 6MM {CHR "F.S." }	164	12
FCA0100484	T060 IST 6MM {CHR "DEC" }	164	12
FCA0100485	T060 IST 6MM {CHR "STROK" }	164	12
FCA0100486	T060 IST 6MM {CHR "&" }	164	12
FCA0100487	T080 IST 8MM {CHR "A" }	328	4
FCA0100488	T080 IST 8MM {CHR "B" }	328	4
FCA0100489	T080 IST 8MM {CHR "C" }	328	4
FCA0100490	T080 IST 8MM {CHR "D" }	328	4
FCA0100491	T080 IST 8MM {CHR "E" }	328	4
FCA0100492	T080 IST 8MM {CHR "F" }	328	4
FCA0100493	T080 IST 8MM {CHR "G" }	328	4
FCA0100494	T080 IST 8MM {CHR "H" }	328	4

ALL RATES ARE IN RUPEES PER PIECE (Excl. of GST)

SAP Code	Description	List Price ₹	MOQ
FCA0100495	T080 IST 8MM {CHR "I" }	328	4
FCA0100496	T080 IST 8MM {CHR "J" }	328	4
FCA0100497	T080 IST 8MM {CHR "K" }	328	4
FCA0100498	T080 IST 8MM {CHR "L" }	328	4
FCA0100499	T080 IST 8MM {CHR "M" }	328	4
FCA0100500	T080 IST 8MM {CHR "N" }	328	4
FCA0100501	T080 IST 8MM {CHR "O" }	328	4
FCA0100502	T080 IST 8MM {CHR "P" }	328	4
FCA0100503	T080 IST 8MM {CHR "Q" }	328	4
FCA0100504	T080 IST 8MM {CHR "R" }	328	4
FCA0100505	T080 IST 8MM {CHR "S" }	328	4
FCA0100506	T080 IST 8MM {CHR "T" }	328	4
FCA0100507	T080 IST 8MM {CHR "U" }	328	4
FCA0100508	T080 IST 8MM {CHR "V" }	328	4
FCA0100509	T080 IST 8MM {CHR "W" }	328	4
FCA0100510	T080 IST 8MM {CHR "X" }	328	4
FCA0100511	T080 IST 8MM {CHR "Y" }	328	4
FCA0100512	T080 IST 8MM {CHR "Z" }	328	4
FCA0100513	T080 IST 8MM {CHR "1" }	328	4
FCA0100514	T080 IST 8MM {CHR "2" }	328	4
FCA0100515	T080 IST 8MM {CHR "3" }	328	4
FCA0100516	T080 IST 8MM {CHR "4" }	328	4
FCA0100517	T080 IST 8MM {CHR "5" }	328	4
FCA0100518	T080 IST 8MM {CHR "6" }	328	4
FCA0100519	T080 IST 8MM {CHR "7" }	328	4
FCA0100520	T080 IST 8MM {CHR "8" }	328	4

Conventional Marking Systems

ALL RATES ARE IN RUPEES PER PIECE (Excl. of GST)

SAP Code	Description	List Price ₹	MOQ
FCA0100521	T080 IST 8MM {CHR "9" }	328	4
FCA0100522	T080 IST 8MM {CHR "DASH" }	328	4
FCA0100523	T080 IST 8MM {CHR "F.S." }	328	4
FCA0100524	T080 IST 8MM {CHR "DEC" }	328	4
FCA0100525	T080 IST 8MM {CHR "STROK" }	328	4
FCA0100526	T080 IST 8MM {CHR "&" }	328	4
FCA0100527	S030 SPACER SIZE 3MM	75	15
FCA0100528	S050 SPACER SIZE 5MM	86	12
FCA0100529	8H40 HAND HOLDER ASSY (90241)	5,220	5
FCA0100530	T100 IST 10MM {CHR "A" }	348	4
FCA0100531	T100 IST 10MM {CHR "B" }	348	4
FCA0100532	T100 IST 10MM {CHR "C" }	348	4
FCA0100533	T100 IST 10MM {CHR "D" }	348	4
FCA0100534	T100 IST 10MM {CHR "E" }	348	4
FCA0100535	T100 IST 10MM {CHR "F" }	348	4
FCA0100536	T100 IST 10MM {CHR "G" }	348	4
FCA0100537	T100 IST 10MM {CHR "H" }	348	4
FCA0100538	T100 IST 10MM {CHR "I" }	348	4
FCA0100539	T100 IST 10MM {CHR "J" }	348	4
FCA0100540	T100 IST 10MM {CHR "K" }	348	4
FCA0100541	T100 IST 10MM {CHR "L" }	348	4
FCA0100542	T100 IST 10MM {CHR "M" }	348	4
FCA0100543	T100 IST 10MM {CHR "N" }	348	4
FCA0100544	T100 IST 10MM {CHR "O" }	348	4
FCA0100545	T100 IST 10MM {CHR "P" }	348	4
FCA0100546	T100 IST 10MM {CHR "Q" }	348	4

ALL RATES ARE IN RUPEES PER PIECE (Excl. of GST)

SAP Code	Description	List Price ₹	MOQ
FCA0100547	T100 IST 10MM {CHR "R" }	348	4
FCA0100548	T100 IST 10MM {CHR "S" }	348	4
FCA0100549	T100 IST 10MM {CHR "T" }	348	4
FCA0100550	T100 IST 10MM {CHR "U" }	348	4
FCA0100551	T100 IST 10MM {CHR "V" }	348	4
FCA0100552	T100 IST 10MM {CHR "W" }	348	4
FCA0100553	T100 IST 10MM {CHR "X" }	348	4
FCA0100554	T100 IST 10MM {CHR "Y" }	348	4
FCA0100555	T100 IST 10MM {CHR "Z" }	348	4
FCA0100556	T100 IST 10MM {CHR "1" }	348	4
FCA0100557	T100 IST 10MM {CHR "2" }	348	4
FCA0100558	T100 IST 10MM {CHR "3" }	348	4
FCA0100559	T100 IST 10MM {CHR "4" }	348	4
FCA0100560	T100 IST 10MM {CHR "5" }	348	4
FCA0100561	T100 IST 10MM {CHR "6" }	348	4
FCA0100562	T100 IST 10MM {CHR "7" }	348	4
FCA0100563	T100 IST 10MM {CHR "8" }	348	4
FCA0100564	T100 IST 10MM {CHR "9" }	348	4
FCA0100565	T100 IST 10MM {CHR "DASH" }	348	4
FCA0100566	T100 IST 10MM {CHR "F.S." }	348	4
FCA0100567	T100 IST 10MM {CHR "DEC" }	348	4
FCA0100568	T100 IST 10MM {CHR "STROK" }	348	4
FCA0100569	T100 IST 10MM {CHR "&" }	348	4
FCA0100650	SPACER SIZE 1MM	71	20
FCA0100652	SPACER SIZE 8MM	154	4
FCA0100900	112BH062 IST SET WITH HOLDER SIZE 1/16"	13,696	5

Conventional Marking Systems

ALL RATES ARE IN RUPEES PER PIECE (Excl. of GST)

SAP Code	Description	List Price ₹	MOQ
FCA0100901	112BH093 IST SET WITH HOLDER SIZE 3/32"	14,763	0
FCA0100902	112BH125 IST SET WITH HOLDER SIZE 1/8"	15,081	0
FCA0100903	112BH187 IST SET WITH HOLDER SIZE 3/16"	23,047	0
FCA0100904	112BH250 IST SET WITH HOLDER SIZE 1/4"	22,127	0
FCA0100905	112B062 IST SET W/O HOLDER SIZE 1/16"	12,007	0
FCA0100906	112B093 IST SET W/O HOLDER SIZE 3/32"	12,515	0
FCA0100907	112B125 IST SET W/O HOLDER SIZE 1/8"	12,895	0
FCA0100908	112B187 IST SET W/O HOLDER SIZE 3/16"	20,518	0
FCA0100909	112B250 IST SET W/O HOLDER SIZE 1/4"	18,600	0
FCA0100911	112BH020 IST SET WITH HOLDER SIZE 2MM	14,141	0
FCA0100912	112BH030 IST SET WITH HOLDER SIZE 3MM	14,979	0
FCA0100913	112BH040 IST SET WITH HOLDER SIZE 4MM	18,499	0
FCA0100914	112BH050 IST SET WITH HOLDER SIZE 5MM	18,359	0
FCA0100915	112BH060 IST SET WITH HOLDER SIZE 6MM	18,486	0
FCA0100916	112B010 IST SET WITHOUT HOLDER SIZE 1MM	14,166	0
FCA0100917	112B020 IST SET WITHOUT HOLDER SIZE 2MM	12,261	0
FCA0100918	112B030 IST SET WITHOUT HOLDER SIZE 3MM	12,769	0
FCA0100919	112B040 IST SET WITHOUT HOLDER SIZE 4MM	16,326	0
FCA0100920	112B050 IST FONT SET W/O HOLDER SIZE 5M	16,707	0
FCA0100921	112B060 IST SET WITHOUT HOLDER SIZE 6MM	17,089	0
FCA0100922	66BH080 IST SET WITH HOLDER SIZE 8MM	25,417	0
FCA0100923	66BH100 IST SET WITH HOLDER SIZE 10MM	27,259	0
FCA0100924	66B080 IST SET W/O HOLDER SIZE 8MM	20,303	0
FCA0100925	66B100 IST SET W/O HOLDER SIZE 10MM	22,367	0
FCA0100962	T030D IST DOTTED SIZE 3mm CHR"&"	487	15
FCA0100963	T030D IST DOTTED SIZE 3mm CHR"DASH"	487	15

ALL RATES ARE IN RUPEES PER PIECE (Excl. of GST)

SAP Code	Description	List Price ₹	MOQ
FCA0100964	T030D IST DOTTED SIZE 3mm CHR"DEC"	487	15
FCA0100965	T030D IST DOTTED SIZE 3mm CHR"STROKE"	487	15
FCA0100966	T030D IST DOTTED SIZE 3mm CHR"A"	487	15
FCA0100967	T030D IST DOTTED SIZE 3mm CHR"B"	487	15
FCA0100968	T030D IST DOTTED SIZE 3mm CHR"C"	487	15
FCA0100969	T030D IST DOTTED SIZE 3mm CHR"D"	487	15
FCA0100970	T030D IST DOTTED SIZE 3mm CHR"E"	487	15
FCA0100971	T030D IST DOTTED SIZE 3mm CHR"F"	487	15
FCA0100972	T030D IST DOTTED SIZE 3mm CHR"G"	487	15
FCA0100973	T030D IST DOTTED SIZE 3mm CHR"H"	487	15
FCA0100974	T030D IST DOTTED SIZE 3mm CHR"I"	487	15
FCA0100975	T030D IST DOTTED SIZE 3mm CHR"J"	487	15
FCA0100976	T030D IST DOTTED SIZE 3mm CHR"K"	487	15
FCA0100977	T030D IST DOTTED SIZE 3mm CHR"L"	487	15
FCA0100978	T030D IST DOTTED SIZE 3mm CHR"M"	487	15
FCA0100979	T030D IST DOTTED SIZE 3mm CHR"N"	487	15
FCA0100980	T030D IST DOTTED SIZE 3mm CHR"O"	487	15
FCA0100981	T030D IST DOTTED SIZE 3mm CHR"P"	487	15
FCA0100982	T030D IST DOTTED SIZE 3mm CHR"Q"	487	15
FCA0100983	T030D IST DOTTED SIZE 3mm CHR"R"	487	15
FCA0100984	T030D IST DOTTED SIZE 3mm CHR"S"	487	15
FCA0100985	T030D IST DOTTED SIZE 3mm CHR"T"	487	15
FCA0100986	T030D IST DOTTED SIZE 3mm CHR"U"	487	15
FCA0100987	T030D IST DOTTED SIZE 3mm CHR"V"	487	15
FCA0100988	T030D IST DOTTED SIZE 3mm CHR"W"	487	15
FCA0100989	T030D IST DOTTED SIZE 3mm CHR"X"	487	15

Conventional Marking Systems

ALL RATES ARE IN RUPEES PER PIECE (Excl. of GST)

SAP Code	Description	List Price ₹	MOQ
FCA0100990	T030D IST DOTTED SIZE 3mm CHR"Y"	487	15
FCA0100991	T030D IST DOTTED SIZE 3mm CHR"Z"	487	15
FCA0100992	T030D IST DOTTED SIZE 3mm CHR"1"	487	15
FCA0100993	T030D IST DOTTED SIZE 3mm CHR"2"	487	15
FCA0100994	T030D IST DOTTED SIZE 3mm CHR"3"	487	15
FCA0100995	T030D IST DOTTED SIZE 3mm CHR"4"	487	15
FCA0100996	T030D IST DOTTED SIZE 3mm CHR"5"	487	15
FCA0100997	T030D IST DOTTED SIZE 3mm CHR"6"	487	15
FCA0100998	T030D IST DOTTED SIZE 3mm CHR"7"	487	15
FCA0100999	T030D IST DOTTED SIZE 3mm CHR"8"	487	15
FCA0101000	T030D IST DOTTED SIZE 3mm CHR"9"	487	15
FCA0101002	T040D IST DOTTED SIZE 4mm CHR"&"	487	15
FCA0101003	T040D IST DOTTED SIZE 4mm CHR"DASH"	487	15
FCA0101004	T040D IST DOTTED SIZE 4mm CHR"DEC"	487	15
FCA0101005	T040D IST DOTTED SIZE 4mm CHR"STROKE"	487	15
FCA0101006	T040D IST DOTTED SIZE 4mm CHR"F.STOP"	487	15
FCA0101007	T040D IST DOTTED SIZE 4mm CHR"A"	487	15
FCA0101008	T040D IST DOTTED SIZE 4mm CHR"B"	487	15
FCA0101009	T040D IST DOTTED SIZE 4mm CHR"C"	487	15
FCA0101010	T040D IST DOTTED SIZE 4mm CHR"D"	487	15
FCA0101011	T040D IST DOTTED SIZE 4mm CHR"E"	487	15
FCA0101012	T040D IST DOTTED SIZE 4mm CHR"F"	487	15
FCA0101013	T040D IST DOTTED SIZE 4mm CHR"G"	487	15
FCA0101014	T040D IST DOTTED SIZE 4mm CHR"H"	487	15
FCA0101015	T040D IST DOTTED SIZE 4mm CHR"I"	487	15
FCA0101016	T040D IST DOTTED SIZE 4mm CHR"J"	487	15

ALL RATES ARE IN RUPEES PER PIECE (Excl. of GST)

SAP Code	Description	List Price ₹	MOQ
FCA0101017	T040D IST DOTTED SIZE 4mm CHR"K"	487	15
FCA0101018	T040D IST DOTTED SIZE 4mm CHR"L"	487	15
FCA0101019	T040D IST DOTTED SIZE 4mm CHR"M"	487	15
FCA0101020	T040D IST DOTTED SIZE 4mm CHR"N"	487	15
FCA0101021	T040D IST DOTTED SIZE 4mm CHR"O"	487	15
FCA0101022	T040D IST DOTTED SIZE 4mm CHR"P"	487	15
FCA0101023	T040D IST DOTTED SIZE 4mm CHR"Q"	487	15
FCA0101024	T040D IST DOTTED SIZE 4mm CHR"R"	487	15
FCA0101025	T040D IST DOTTED SIZE 4mm CHR"S"	487	15
FCA0101026	T040D IST DOTTED SIZE 4mm CHR"T"	487	15
FCA0101027	T040D IST DOTTED SIZE 4mm CHR"U"	487	15
FCA0101028	T040D IST DOTTED SIZE 4mm CHR"V"	487	15
FCA0101029	T040D IST DOTTED SIZE 4mm CHR"W"	487	15
FCA0101030	T040D IST DOTTED SIZE 4mm CHR"X"	487	15
FCA0101031	T040D IST DOTTED SIZE 4mm CHR"Y"	487	15
FCA0101032	T040D IST DOTTED SIZE 4mm CHR"Z"	487	15
FCA0101033	T040D IST DOTTED SIZE 4mm CHR"1"	487	15
FCA0101034	T040D IST DOTTED SIZE 4mm CHR"2"	487	15
FCA0101035	T040D IST DOTTED SIZE 4mm CHR"3"	487	15
FCA0101036	T040D IST DOTTED SIZE 4mm CHR"4"	487	15
FCA0101037	T040D IST DOTTED SIZE 4mm CHR"5"	487	15
FCA0101038	T040D IST DOTTED SIZE 4mm CHR"6"	487	15
FCA0101039	T040D IST DOTTED SIZE 4mm CHR"7"	487	15
FCA0101040	T040D IST DOTTED SIZE 4mm CHR"8"	487	15
FCA0101041	T040D IST DOTTED SIZE 4mm CHR"9"	487	15
FCA0101042	T050D IST DOTTED SIZE 5mm CHR"DASH"	641	12

Conventional Marking Systems

ALL RATES ARE IN RUPEES PER PIECE (Excl. of GST)

SAP Code	Description	List Price ₹	MOQ
FCA0101043	T050D IST DOTTED SIZE 5mm CHR"STROKE"	641	12
FCA0101044	T050D IST DOTTED SIZE 5mm CHR"A"	641	12
FCA0101045	T050D IST DOTTED SIZE 5mm CHR"B"	641	12
FCA0101046	T050D IST DOTTED SIZE 5mm CHR"C"	641	12
FCA0101047	T050D IST DOTTED SIZE 5mm CHR"D"	641	12
FCA0101048	T050D IST DOTTED SIZE 5mm CHR"E"	641	12
FCA0101049	T050D IST DOTTED SIZE 5mm CHR"F"	641	12
FCA0101050	T050D IST DOTTED SIZE 5mm CHR"G"	641	12
FCA0101051	T050D IST DOTTED SIZE 5mm CHR"H"	641	12
FCA0101052	T050D IST DOTTED SIZE 5mm CHR"I"	641	12
FCA0101053	T050D IST DOTTED SIZE 5mm CHR"J"	641	12
FCA0101054	T050D IST DOTTED SIZE 5mm CHR"K"	641	12
FCA0101055	T050D IST DOTTED SIZE 5mm CHR"L"	641	12
FCA0101056	T050D IST DOTTED SIZE 5mm CHR"M"	641	12
FCA0101057	T050D IST DOTTED SIZE 5mm CHR"N"	641	12
FCA0101058	T050D IST DOTTED SIZE 5mm CHR"O"	641	12
FCA0101059	T050D IST DOTTED SIZE 5mm CHR"P"	641	12
FCA0101060	T050D IST DOTTED SIZE 5mm CHR"Q"	641	12
FCA0101061	T050D IST DOTTED SIZE 5mm CHR"R"	641	12
FCA0101062	T050D IST DOTTED SIZE 5mm CHR"S"	641	12
FCA0101063	T050D IST DOTTED SIZE 5mm CHR"T"	641	12
FCA0101064	T050D IST DOTTED SIZE 5mm CHR"U"	641	12
FCA0101065	T050D IST DOTTED SIZE 5mm CHR"V"	641	12
FCA0101066	T050D IST DOTTED SIZE 5mm CHR"W"	641	12
FCA0101067	T050D IST DOTTED SIZE 5mm CHR"X"	641	12
FCA0101068	T050D IST DOTTED SIZE 5mm CHR"Y"	641	12

ALL RATES ARE IN RUPEES PER PIECE (Excl. of GST)

SAP Code	Description	List Price ₹	MOQ
FCA0101069	T050D IST DOTTED SIZE 5mm CHR"Z"	641	12
FCA0101070	T050D IST DOTTED SIZE 5mm CHR"1"	641	12
FCA0101071	T050D IST DOTTED SIZE 5mm CHR"2"	641	12
FCA0101072	T050D IST DOTTED SIZE 5mm CHR"3"	641	12
FCA0101073	T050D IST DOTTED SIZE 5mm CHR"4"	641	12
FCA0101074	T050D IST DOTTED SIZE 5mm CHR"5"	641	12
FCA0101075	T050D IST DOTTED SIZE 5mm CHR"6"	641	12
FCA0101076	T050D IST DOTTED SIZE 5mm CHR"7"	641	12
FCA0101077	T050D IST DOTTED SIZE 5mm CHR"8"	641	12
FCA0101078	T050D IST DOTTED SIZE 5mm CHR"9"	641	12
FCA0101079	T060D IST DOTTED SIZE 6mm CHR"A"	653	12
FCA0101080	T060D IST DOTTED SIZE 6mm CHR"B"	653	12
FCA0101081	T060D IST DOTTED SIZE 6mm CHR"C"	653	12
FCA0101082	T060D IST DOTTED SIZE 6mm CHR"D"	653	12
FCA0101083	T060D IST DOTTED SIZE 6mm CHR"E"	653	12
FCA0101084	T060D IST DOTTED SIZE 6mm CHR"F"	653	12
FCA0101085	T060D IST DOTTED SIZE 6mm CHR"G"	653	12
FCA0101086	T060D IST DOTTED SIZE 6mm CHR"H"	653	12
FCA0101087	T060D IST DOTTED SIZE 6mm CHR"I"	653	12
FCA0101088	T060D IST DOTTED SIZE 6mm CHR"J"	653	12
FCA0101089	T060D IST DOTTED SIZE 6mm CHR"K"	653	12
FCA0101090	T060D IST DOTTED SIZE 6mm CHR"L"	653	12
FCA0101091	T060D IST DOTTED SIZE 6mm CHR"M"	653	12
FCA0101092	T060D IST DOTTED SIZE 6mm CHR"N"	653	12
FCA0101093	T060D IST DOTTED SIZE 6mm CHR"O"	653	12
FCA0101094	T060D IST DOTTED SIZE 6mm CHR"P"	653	12

Conventional Marking Systems

ALL RATES ARE IN RUPEES PER PIECE (Excl. of GST)

SAP Code	Description	List Price ₹	MOQ
FCA0101095	T060D IST DOTTED SIZE 6mm CHR"Q"	653	12
FCA0101096	T060D IST DOTTED SIZE 6mm CHR"R"	653	12
FCA0101097	T060D IST DOTTED SIZE 6mm CHR"S"	653	12
FCA0101098	T060D IST DOTTED SIZE 6mm CHR"T"	653	12
FCA0101099	T060D IST DOTTED SIZE 6mm CHR"U"	653	12
FCA0101100	T060D IST DOTTED SIZE 6mm CHR"V"	653	12
FCA0101101	T060D IST DOTTED SIZE 6mm CHR"W"	653	12
FCA0101102	T060D IST DOTTED SIZE 6mm CHR"X"	653	12
FCA0101103	T060D IST DOTTED SIZE 6mm CHR"Y"	653	12
FCA0101104	T060D IST DOTTED SIZE 6mm CHR"Z"	653	12
FCA0101105	T060D IST DOTTED SIZE 6mm CHR"1"	653	12
FCA0101106	T060D IST DOTTED SIZE 6mm CHR"2"	653	12
FCA0101107	T060D IST DOTTED SIZE 6mm CHR"3"	653	12
FCA0101108	T060D IST DOTTED SIZE 6mm CHR"4"	653	12
FCA0101109	T060D IST DOTTED SIZE 6mm CHR"5"	653	12
FCA0101110	T060D IST DOTTED SIZE 6mm CHR"6"	653	12
FCA0101111	T060D IST DOTTED SIZE 6mm CHR"7"	653	12
FCA0101112	T060D IST DOTTED SIZE 6mm CHR"8"	653	12
FCA0101113	T060D IST DOTTED SIZE 6mm CHR"9"	653	12
FCA0101114	TC020 IST CRMP 2MM {CHR "A" }	265	15
FCA0101115	TC020 IST CRMP 2MM {CHR "B" }	265	15
FCA0101116	TC020 IST CRMP 2MM {CHR "C" }	265	15
FCA0101117	TC020 IST CRMP 2MM {CHR "D" }	265	15
FCA0101118	TC020 IST CRMP 2MM {CHR "E" }	265	15
FCA0101119	TC020 IST CRMP 2MM {CHR "F" }	265	15
FCA0101120	TC020 IST CRMP 2MM {CHR "G" }	265	15

ALL RATES ARE IN RUPEES PER PIECE (Excl. of GST)

SAP Code	Description	List Price ₹	MOQ
FCA0101121	TC020 IST CRMP 2MM {CHR "H" }	265	15
FCA0101122	TC020 IST CRMP 2MM {CHR "I" }	265	15
FCA0101123	TC020 IST CRMP 2MM {CHR "J" }	265	15
FCA0101124	TC020 IST CRMP 2MM {CHR "K" }	265	15
FCA0101125	TC020 IST CRMP 2MM {CHR "L" }	265	15
FCA0101126	TC020 IST CRMP 2MM {CHR "M" }	265	15
FCA0101127	TC020 IST CRMP 2MM {CHR "N" }	265	15
FCA0101128	TC020 IST CRMP 2MM {CHR "O" }	265	15
FCA0101129	TC020 IST CRMP 2MM {CHR "P" }	265	15
FCA0101130	TC020 IST CRMP 2MM {CHR "Q" }	265	15
FCA0101131	TC020 IST CRMP 2MM {CHR "R" }	265	15
FCA0101132	TC020 IST CRMP 2MM {CHR "S" }	265	15
FCA0101133	TC020 IST CRMP 2MM {CHR "T" }	265	15
FCA0101134	TC020 IST CRMP 2MM {CHR "U" }	265	15
FCA0101135	TC020 IST CRMP 2MM {CHR "V" }	265	15
FCA0101136	TC020 IST CRMP 2MM {CHR "W" }	265	15
FCA0101137	TC020 IST CRMP 2MM {CHR "X" }	265	15
FCA0101138	TC020 IST CRMP 2MM {CHR "Y" }	265	15
FCA0101139	TC020 IST CRMP 2MM {CHR "Z" }	265	15
FCA0101140	TC020 IST CRMP 2MM {CHR "1" }	265	15
FCA0101141	TC020 IST CRMP 2MM {CHR "2" }	265	15
FCA0101142	TC020 IST CRMP 2MM {CHR "3" }	265	15
FCA0101143	TC020 IST CRMP 2MM {CHR "4" }	265	15
FCA0101144	TC020 IST CRMP 2MM {CHR "5" }	265	15
FCA0101145	TC020 IST CRMP 2MM {CHR "6" }	265	15
FCA0101146	TC020 IST CRMP 2MM {CHR "7" }	265	15

Conventional Marking Systems

ALL RATES ARE IN RUPEES PER PIECE (Excl. of GST)

SAP Code	Description	List Price ₹	MOQ
FCA0101147	TC020 IST CRMP 2MM {CHR "8" }	265	15
FCA0101148	TC020 IST CRMP 2MM {CHR "9" }	265	15
FCA0101149	TC020 IST CRMP 2MM {CHR "DASH" }	265	15
FCA0101150	TC020 IST CRMP 2MM {CHR "F.S." }	265	15
FCA0101151	TC020 IST CRMP 2MM {CHR "DEC" }	265	15
FCA0101152	TC020 IST CRMP 2MM {CHR "STROK" }	265	15
FCA0101154	TC020 IST CRMP 2MM {CHR "&" }	265	15
FCA0101195	S020 SPACER SIZE 2MM	71	15
FCA0101196	S040 SPACER SIZE 4MM	97	15
FCA0101197	SPACER SIZE 6MM	131	12
FCA0101198	SPACER SIZE 10MM	164	4
FCA0101201	BOX WOODEN FOR 1,2MM IST	1,706	0
FCA0101202	BOX WOODEN FOR 3,4MM IST	1,743	0
FCA0101203	BOX WOODEN FOR 5,6MM IST	1,704	0
FCA0101204	BOX WOODEN FOR 3/32",1/8"MM IST	1,847	0
FCA0101205	IST FONT SET WITH HOLDER SIZE 1MM	15,882	0
FCA0101329	91433 IST SPL. 16MM {CHR "A" }	383	0
FCA0101330	91433 IST SPL. 16MM {CHR "B" }	383	0
FCA0101331	91433 IST SPL. 16MM {CHR "C" }	383	0
FCA0101332	91433 IST SPL. 16MM {CHR "D" }	383	0
FCA0101333	91433 IST SPL. 16MM {CHR "E" }	383	0
FCA0101334	91433 IST SPL. 16MM {CHR "F" }	383	0
FCA0101335	91433 IST SPL. 16MM {CHR "G" }	383	0
FCA0101336	91433 IST SPL. 16MM {CHR "H" }	383	0
FCA0101337	91433 IST SPL. 16MM {CHR "I" }	383	0
FCA0101338	91433 IST SPL. 16MM {CHR "J" }	383	0

ALL RATES ARE IN RUPEES PER PIECE (Excl. of GST)

SAP Code	Description	List Price ₹	MOQ
FCA0101339	91433 IST SPL. 16MM {CHR "K" }	383	0
FCA0101340	91433 IST SPL. 16MM {CHR "L" }	383	0
FCA0101341	91433 IST SPL. 16MM {CHR "M" }	383	0
FCA0101342	91433 IST SPL. 16MM {CHR "N" }	383	0
FCA0101343	91433 IST SPL. 16MM {CHR "O" }	383	0
FCA0101344	91433 IST SPL. 16MM {CHR "P" }	383	0
FCA0101345	91433 IST SPL. 16MM {CHR "Q" }	383	0
FCA0101346	91433 IST SPL. 16MM {CHR "R" }	383	0
FCA0101347	91433 IST SPL. 16MM {CHR "S" }	383	0
FCA0101348	91433 IST SPL. 16MM {CHR "T" }	383	0
FCA0101349	91433 IST SPL. 16MM {CHR "U" }	383	0
FCA0101350	91433 IST SPL. 16MM {CHR "V" }	383	0
FCA0101351	91433 IST SPL. 16MM {CHR "W" }	383	0
FCA0101352	91433 IST SPL. 16MM {CHR "X" }	383	0
FCA0101353	91433 IST SPL. 16MM {CHR "Y" }	383	0
FCA0101354	91433 IST SPL. 16MM {CHR "Z" }	452	0
FCA0101355	91433 IST SPL. 16MM {CHR "1" }	383	0
FCA0101356	91433 IST SPL. 16MM {CHR "2" }	383	0
FCA0101357	91433 IST SPL. 16MM {CHR "3" }	383	0
FCA0101358	91433 IST SPL. 16MM {CHR "4" }	383	0
FCA0101359	91433 IST SPL. 16MM {CHR "5" }	383	0
FCA0101360	91433 IST SPL. 16MM {CHR "6" }	383	0
FCA0101361	91433 IST SPL. 16MM {CHR "7" }	383	0
FCA0101362	91433 IST SPL. 16MM {CHR "8" }	383	0
FCA0101363	91433 IST SPL. 16MM {CHR "9" }	383	0
FCA0101364	91433 IST SPL. 16MM {CHR "DASH" }	383	0

Conventional Marking Systems

ALL RATES ARE IN RUPEES PER PIECE (Excl. of GST)

SAP Code	Description	List Price ₹	MOQ
FCA0101365	91433 IST SPL. 16MM {CHR "F.S." }	383	0
FCA0101366	91433 IST SPL. 16MM {CHR "DEC" }	383	0
FCA0101367	91433 IST SPL. 16MM {CHR "STROK" }	383	0
FCA0101368	91433 IST SPL. 16MM {CHR "&" }	383	0
FCA0101571	93346 FEM.CRIMP WITH NICK CHR "A"	285	20
FCA0101572	93346 FEM.CRIMP WITH NICK CHR "B"	285	20
FCA0101573	93346 FEM.CRIMP WITH NICK CHR "C"	285	20
FCA0101574	93346 FEM.CRIMP WITH NICK CHR "D"	285	20
FCA0101575	93346 FEM.CRIMP WITH NICK CHR "E"	285	20
FCA0101576	93346 FEM.CRIMP WITH NICK CHR "F"	285	20
FCA0101577	93346 FEM.CRIMP WITH NICK CHR "G"	285	20
FCA0101578	93346 FEM.CRIMP WITH NICK CHR "H"	285	20
FCA0101579	93346 FEM.CRIMP WITH NICK CHR "I"	285	20
FCA0101580	93346 FEM.CRIMP WITH NICK CHR "J"	285	20
FCA0101581	93346 FEM.CRIMP WITH NICK CHR "K"	285	20
FCA0101582	93346 FEM.CRIMP WITH NICK CHR "L"	285	20
FCA0101583	93346 FEM.CRIMP WITH NICK CHR "M"	285	20
FCA0101584	93346 FEM.CRIMP WITH NICK CHR "N"	285	20
FCA0101585	93346 FEM.CRIMP WITH NICK CHR "O"	285	20
FCA0101586	93346 FEM.CRIMP WITH NICK CHR "P"	285	20
FCA0101587	93346 FEM.CRIMP WITH NICK CHR "Q"	285	20
FCA0101588	93346 FEM.CRIMP WITH NICK CHR "R"	285	20
FCA0101589	93346 FEM.CRIMP WITH NICK CHR "S"	285	20
FCA0101590	93346 FEM.CRIMP WITH NICK CHR "T"	285	20
FCA0101591	93346 FEM.CRIMP WITH NICK CHR "U"	285	20
FCA0101592	93346 FEM.CRIMP WITH NICK CHR "V"	285	20

ALL RATES ARE IN RUPEES PER PIECE (Excl. of GST)

SAP Code	Description	List Price ₹	MOQ
FCA0101593	93346 FEM.CRIMP WITH NICK CHR "W"	285	20
FCA0101594	93346 FEM.CRIMP WITH NICK CHR "X"	285	20
FCA0101595	93346 FEM.CRIMP WITH NICK CHR "Y"	285	20
FCA0101596	93346 FEM.CRIMP WITH NICK CHR "Z"	285	20
FCA0101597	93346 FEM.CRIMP WITH NICK CHR "1"	285	20
FCA0101598	93346 FEM.CRIMP WITH NICK CHR "2"	285	20
FCA0101599	93346 FEM.CRIMP WITH NICK CHR "3"	285	20
FCA0101600	93346 FEM.CRIMP WITH NICK CHR "4"	285	20
FCA0101601	93346 FEM.CRIMP WITH NICK CHR "5"	285	20
FCA0101602	93346 FEM.CRIMP WITH NICK CHR "6"	285	20
FCA0101603	93346 FEM.CRIMP WITH NICK CHR "7"	285	20
FCA0101604	93346 FEM.CRIMP WITH NICK CHR "8"	285	20
FCA0101605	93346 FEM.CRIMP WITH NICK CHR "9"	285	20
FCA0101606	93346 FEM.CRIMP WITH NICK CHR "DASH"	285	20
FCA0101607	93346 FEM.CRIMP WITH NICK CHR "F.S."	285	20
FCA0101609	93346 FEM.CRIMP WITH NICK CHR "STROK"	285	20
FCA0101653	94125 IST SPL.L-SHAPE 1.60MM CHR "A"	311	20
FCA0101654	94125 IST SPL.L-SHAPE 1.60MM CHR "B"	311	20
FCA0101655	94125 IST SPL.L-SHAPE 1.60MM CHR "C"	311	20
FCA0101656	94125 IST SPL.L-SHAPE 1.60MM. CHR "D"	311	20
FCA0101657	94125 IST SPL.L-SHAPE 1.60MM. CHR "E"	311	20
FCA0101658	94125 IST SPL.L-SHAPE 1.60MM. CHR "F"	311	20
FCA0101659	94125 IST SPL.L-SHAPE 1.60MM. CHR "G"	311	20
FCA0101660	94125 IST SPL.L-SHAPE 1.60MM. CHR "H"	311	20
FCA0101661	94125 IST SPL.L-SHAPE 1.60MM. CHR "I"	311	20
FCA0101663	94125 IST SPL.L-SHAPE 1.60MM. CHR "K"	311	20

Conventional Marking Systems

ALL RATES ARE IN RUPEES PER PIECE (Excl. of GST)

SAP Code	Description	List Price ₹	MOQ
FCA0101664	94125 IST SPL.L-SHAPE 1.60MM. CHR "L"	311	20
FCA0101665	94125 IST SPL.L-SHAPE 1.60MM. CHR "M"	311	20
FCA0101666	94125 IST SPL.L-SHAPE 1.60MM. CHR "N"	311	20
FCA0101667	94125 IST SPL.L-SHAPE 1.60MM. CHR "O"	311	20
FCA0101668	94125 IST SPL.L-SHAPE 1.60MM. CHR "P"	311	20
FCA0101669	94125 IST SPL.L-SHAPE 1.60MM. CHR "Q"	311	20
FCA0101670	94125 IST SPL.L-SHAPE 1.60MM. CHR "R"	311	20
FCA0101671	94125 IST SPL.L-SHAPE 1.60MM. CHR "S"	311	20
FCA0101672	94125 IST SPL.L-SHAPE 1.60MM. CHR "T"	311	20
FCA0101673	94125 IST SPL.L-SHAPE 1.60MM. CHR "7"	311	20
FCA0101674	94125 IST SPL.L-SHAPE 1.60MM. CHR "V"	311	20
FCA0101675	94125 IST SPL.L-SHAPE 1.60MM. CHR "W"	311	20
FCA0101676	94125 IST SPL.L-SHAPE 1.60MM. CHR "X"	311	20
FCA0101677	94125 IST SPL.L-SHAPE 1.60MM. CHR "Y"	311	20
FCA0101678	94125 IST SPL.L-SHAPE 1.60MM. CHR "Z"	311	20
FCA0101679	94125 IST SPL.L-SHAPE 1.60MM. CHR "1"	311	20
FCA0101680	94125 IST SPL.L-SHAPE 1.60MM. CHR "2"	311	20
FCA0101681	94125 IST SPL.L-SHAPE 1.60MM. CHR "3"	311	20
FCA0101682	94125 IST SPL.L-SHAPE 1.60MM. CHR "4"	311	20
FCA0101683	94125 IST SPL.L-SHAPE 1.60MM. CHR "5"	311	20
FCA0101684	94125 IST SPL.L-SHAPE 1.60MM. CHR "U"	311	20
FCA0101685	94125 IST SPL.L-SHAPE 1.60MM. CHR "6"	311	20
FCA0101686	94125 IST SPL.L-SHAPE 1.60MM. CHR "8"	311	20
FCA0101687	94125 IST SPL.L-SHAPE 1.60MM. CHR "9"	311	20
FCA0101688	94125 IST SPL.L-SHAPE 1.60MM CHR"DASH"	311	20
FCA0101689	94125 IST SPL.L-SHAPE 1.60MM. CHR "F.S"	311	20

ALL RATES ARE IN RUPEES PER PIECE (Excl. of GST)

SAP Code	Description	List Price ₹	MOQ
FCA0101690	94125 IST SPL.L-SHAPE 1.60MM. CHR "DEC"	311	20
FCA0101691	94125 IST SPL.L-SHAPE 1.60MM. CHR "/"	311	20
FCA0101693	T062R IST SP REV 1/16" {CHR "A" }	192	30
FCA0101694	T062R IST SP REV 1/16" {CHR "B" }	192	30
FCA0101695	T062R IST SP REV 1/16" {CHR "C" }	192	30
FCA0101696	T062R IST SP REV 1/16" {CHR "D" }	192	30
FCA0101697	T062R IST SP REV 1/16" {CHR "E" }	192	30
FCA0101698	T062R IST SP REV 1/16" {CHR "F" }	192	30
FCA0101699	T062R IST SP REV 1/16" {CHR "G" }	192	30
FCA0101700	T062R IST SP REV 1/16" {CHR "H" }	192	30
FCA0101701	T062R IST SP REV 1/16" {CHR "I" }	192	30
FCA0101702	T062R IST SP REV 1/16" {CHR "J" }	192	30
FCA0101703	T062R IST SP REV 1/16" {CHR "K" }	192	30
FCA0101704	T062R IST SP REV 1/16" {CHR "L" }	192	30
FCA0101705	T062R IST SP REV 1/16" {CHR "M" }	192	30
FCA0101706	T062R IST SP REV 1/16" {CHR "N" }	192	30
FCA0101707	T062R IST SP REV 1/16" {CHR "O" }	192	30
FCA0101708	T062R IST SP REV 1/16" {CHR "P" }	192	30
FCA0101709	T062R IST SP REV 1/16" {CHR "Q" }	192	30
FCA0101710	T062R IST SP REV 1/16" {CHR "R" }	192	30
FCA0101711	T062R IST SP REV 1/16" {CHR "S" }	192	30
FCA0101712	T062R IST SP REV 1/16" {CHR "T" }	192	30
FCA0101713	T062R IST SP REV 1/16" {CHR "U" }	192	30
FCA0101714	T062R IST SP REV 1/16" {CHR "V" }	192	30
FCA0101715	T062R IST SP REV 1/16" {CHR "W" }	192	30
FCA0101716	T062R IST SP REV 1/16" {CHR "X" }	192	30

Conventional Marking Systems

ALL RATES ARE IN RUPEES PER PIECE (Excl. of GST)

SAP Code	Description	List Price ₹	MOQ
FCA0101717	T062R IST SP REV 1/16" {CHR "Y" }	192	30
FCA0101718	T062R IST SP REV 1/16" {CHR "Z" }	192	30
FCA0101719	T062R IST SP REV 1/16" {CHR "1" }	192	30
FCA0101720	T062R IST SP REV 1/16" {CHR "2" }	192	30
FCA0101721	T062R IST SP REV 1/16" {CHR "3" }	192	30
FCA0101722	T062R IST SP REV 1/16" {CHR "4" }	192	30
FCA0101723	T062R IST SP REV 1/16" {CHR "5" }	192	30
FCA0101724	T062R IST SP REV 1/16" {CHR "6" }	192	30
FCA0101725	T062R IST SP REV 1/16" {CHR "7" }	192	30
FCA0101726	T062R IST SP REV 1/16" {CHR "8" }	192	30
FCA0101727	T062R IST SP REV 1/16" {CHR "9" }	192	30
FCA0101728	T062R IST SP REV 1/16" {CHR "DASH" }	192	30
FCA0101729	T062R IST SP REV 1/16" {CHR "F.S." }	192	30
FCA0101731	T062R IST SP REV 1/16" {CHR "STROK" }	192	30
FCA0102759	IST SPL. 2MM REV CALL {CHR "A" }	172	0
FCA0102760	IST SPL. 2MM REV CALL {CHR "B" }	172	0
FCA0102761	IST SPL. 2MM REV CALL {CHR "C" }	172	0
FCA0102762	IST SPL. 2MM REV CALL {CHR "D" }	313	0
FCA0102763	IST SPL. 2MM REV CALL {CHR "E" }	172	0
FCA0102764	IST SPL. 2MM REV CALL {CHR "F" }	313	0
FCA0102765	IST SPL. 2MM REV CALL {CHR "G" }	313	0
FCA0102766	IST SPL. 2MM REV CALL {CHR "H" }	172	0
FCA0102767	IST SPL. 2MM REV CALL {CHR "I" }	172	0
FCA0102768	IST SPL. 2MM REV CALL {CHR "J" }	313	0
FCA0102769	IST SPL. 2MM REV CALL {CHR "K" }	313	0
FCA0102770	IST SPL. 2MM REV CALL {CHR "L" }	172	0

ALL RATES ARE IN RUPEES PER PIECE (Excl. of GST)

SAP Code	Description	List Price ₹	MOQ
FCA0102771	IST SPL. 2MM REV CALL {CHR "M" }	172	0
FCA0102772	IST SPL. 2MM REV CALL {CHR "N" }	313	0
FCA0102773	IST SPL. 2MM REV CALL {CHR "O" }	172	0
FCA0102774	IST SPL. 2MM REV CALL {CHR "P" }	313	0
FCA0102775	IST SPL. 2MM REV CALL {CHR "Q" }	313	0
FCA0102776	IST SPL. 2MM REV CALL {CHR "R" }	313	0
FCA0102777	IST SPL. 2MM REV CALL {CHR "S" }	172	0
FCA0102778	IST SPL. 2MM REV CALL {CHR "T" }	172	0
FCA0102779	IST SPL. 2MM REV CALL {CHR "U" }	172	0
FCA0102780	IST SPL. 2MM REV CALL {CHR "V" }	172	0
FCA0102781	IST SPL. 2MM REV CALL {CHR "W" }	172	0
FCA0102782	IST SPL. 2MM REV CALL {CHR "X" }	172	0
FCA0102783	IST SPL. 2MM REV CALL {CHR "Y" }	172	0
FCA0102784	IST SPL. 2MM REV CALL {CHR "Z" }	313	0
FCA0102785	IST SPL. 2MM REV CALL {CHR "1" }	172	0
FCA0102786	IST SPL. 2MM REV CALL {CHR "2" }	172	0
FCA0102787	IST SPL. 2MM REV CALL {CHR "3" }	172	0
FCA0102788	IST SPL. 2MM REV CALL {CHR "4" }	172	0
FCA0102789	IST SPL. 2MM REV CALL {CHR "5" }	172	0
FCA0102790	IST SPL. 2MM REV CALL {CHR "6" }	172	0
FCA0102791	IST SPL. 2MM REV CALL {CHR "7" }	172	0
FCA0102792	IST SPL. 2MM REV CALL {CHR "8" }	172	0
FCA0102793	IST SPL. 2MM REV CALL {CHR "9" }	172	0
FCA0102794	IST SPL. 2MM REV CALL {CHR "DASH" }	172	0
FCA0102795	IST SPL. 2MM REV CALL {CHR "F.S." }	172	0
FCA0102796	IST SPL. 2MM REV CALL {CHR "DEC" }	172	0
FCA0102797	IST SPL. 2MM REV CALL {CHR "STROK" }	172	0

Conventional Marking Systems

ALL RATES ARE IN RUPEES PER PIECE (Excl. of GST)

ALL RATES ARE IN RUPEES PER PIECE (Excl. of GST)

SAP Code	Description	List Price ₹	MOQ
FCA0102798	IST SPL. 2MM REV CALL {CHR "&" }	313	0
FCA0103249	T030D IST DOTTED SIZE 3MM CHR "A"	484	0
FCA0103250	T030D IST DOTTED SIZE 3MM CHR "B"	484	0
FCA0103251	T030D IST DOTTED SIZE 3MM CHR "C"	484	0
FCA0103252	T030D IST DOTTED SIZE 3MM CHR "D"	484	0
FCA0103253	T030D IST DOTTED SIZE 3MM CHR "E"	484	0
FCA0103254	T030D IST DOTTED SIZE 3MM CHR "F"	484	0
FCA0103255	T030D IST DOTTED SIZE 3MM CHR "G"	484	0
FCA0103256	T030D IST DOTTED SIZE 3MM CHR "H"	484	0
FCA0103257	T030D IST DOTTED SIZE 3MM CHR "I"	484	0
FCA0103258	T030D IST DOTTED SIZE 3MM CHR "J"	484	0
FCA0103259	T030D IST DOTTED SIZE 3MM CHR "K"	484	0
FCA0103260	T030D IST DOTTED SIZE 3MM CHR "L"	484	0
FCA0103261	T030D IST DOTTED SIZE 3MM CHR "M"	484	0
FCA0103262	T030D IST DOTTED SIZE 3MM CHR "N"	484	0
FCA0103264	100372 IST SPL.1. 8MM T-SHAPED "H"	484	0
FCA0103367	T093R 3/32"REV IST {CHR "B"}	199	0
FCA0103368	T093R 3/32"REV IST {CHR "C"}	199	0
FCA0103369	T093R 3/32"REV IST {CHR "D"}	199	0
FCA0103370	T093R 3/32"REV IST {CHR "E"}	199	0
FCA0103371	T093R 3/32"REV IST {CHR "F"}	199	0
FCA0103372	T093R 3/32"REV IST {CHR "G"}	199	0
FCA0103375	T093R 3/32"REV IST {CHR "J"}	199	0
FCA0103376	T093R 3/32"REV IST {CHR "K"}	199	0
FCA0103377	T093R 3/32"REV IST {CHR "L"}	199	0
FCA0103379	T093R 3/32"REV IST {CHR "N"}	199	0

SAP Code	Description	List Price ₹	MOQ
FCA0103381	T093R 3/32"REV IST {CHR "P"}	199	0
FCA0103383	T093R 3/32"REV IST {CHR "R"}	199	0
FCA0103384	T093R 3/32"REV IST {CHR "S"}	199	0
FCA0103392	T093R 3/32"REV IST {CHR "1"}	199	0
FCA0103393	T093R 3/32"REV IST {CHR "2"}	199	0
FCA0103394	T093R 3/32"REV IST {CHR "3"}	199	0
FCA0103395	T093R 3/32"REV IST {CHR "4"}	199	0
FCA0103396	T093R 3/32"REV IST {CHR "5"}	199	0
FCA0103397	T093R 3/32"REV IST {CHR "6"}	199	0
FCA0103398	T093R 3/32"REV IST {CHR "7"}	199	0
FCA0103400	T093R 3/32"REV IST {CHR "9"}	199	0
FCA0103404	T093R 3/32"REV IST {CHR "STROK"}	199	0
FCB0100041	HHP020 HHP 2MM {CHR "A"}	288	5
FCB0100042	HHP020 HHP 2MM {CHR "B"}	288	5
FCB0100043	HHP020 HHP 2MM {CHR "C"}	288	5
FCB0100044	HHP020 HHP 2MM {CHR "D"}	288	5
FCB0100045	HHP020 HHP 2MM {CHR "E"}	288	5
FCB0100046	HHP020 HHP 2MM {CHR "F"}	288	5
FCB0100047	HHP020 HHP 2MM {CHR "G"}	288	5
FCB0100048	HHP020 HHP 2MM {CHR "H"}	288	5
FCB0100049	HHP020 HHP 2MM {CHR "I"}	288	5
FCB0100050	HHP020 HHP 2MM {CHR "J"}	288	5
FCB0100051	HHP020 HHP 2MM {CHR "K"}	288	5
FCB0100052	HHP020 HHP 2MM {CHR "L"}	288	5
FCB0100053	HHP020 HHP 2MM {CHR "M"}	288	5
FCB0100054	HHP020 HHP 2MM {CHR "N"}	288	5

Conventional Marking Systems

ALL RATES ARE IN RUPEES PER PIECE (Excl. of GST)

SAP Code	Description	List Price ₹	MOQ
FCB0100055	HHP020 HHP 2MM {CHR "O" }	288	5
FCB0100056	HHP020 HHP 2MM {CHR "P" }	288	5
FCB0100057	HHP020 HHP 2MM {CHR "Q" }	288	5
FCB0100058	HHP020 HHP 2MM {CHR "R" }	288	5
FCB0100059	HHP020 HHP 2MM {CHR "S" }	288	5
FCB0100060	HHP020 HHP 2MM {CHR "T" }	288	5
FCB0100061	HHP020 HHP 2MM {CHR "U" }	288	5
FCB0100062	HHP020 HHP 2MM {CHR "V" }	288	5
FCB0100063	HHP020 HHP 2MM {CHR "W" }	288	5
FCB0100064	HHP 2MM {CHR "X" }	288	5
FCB0100065	HHP 2MM {CHR "Y" }	288	5
FCB0100066	HHP 2MM {CHR "Z" }	288	5
FCB0100067	HHP 2MM {CHR "1" }	288	5
FCB0100068	HHP 2MM {CHR "2" }	288	5
FCB0100069	HHP 2MM {CHR "3" }	288	5
FCB0100070	HHP 2MM {CHR "4" }	288	5
FCB0100071	HHP 2MM {CHR "5" }	288	5
FCB0100072	HHP 2MM {CHR "6" }	288	5
FCB0100073	HHP 2MM {CHR "7" }	288	5
FCB0100074	HHP 2MM {CHR "8" }	288	5
FCB0100075	HHP 2MM {CHR "9" }	288	5
FCB0100076	HHP 2MM {CHR "DASH" }	288	5
FCB0100077	HHP 2MM {CHR "F.S." }	288	5
FCB0100078	HHP 2MM {CHR "DEC" }	288	5
FCB0100079	HHP 2MM {CHR "STROK" }	288	5
FCB0100080	HHP 2MM {CHR "&" }	288	5

ALL RATES ARE IN RUPEES PER PIECE (Excl. of GST)

SAP Code	Description	List Price ₹	MOQ
FCB0100081	HHP 3MM {CHR "A" }	296	5
FCB0100082	HHP 3MM {CHR "B" }	296	5
FCB0100083	HHP 3MM {CHR "C" }	296	5
FCB0100084	HHP 3MM {CHR "D" }	296	5
FCB0100085	HHP 3MM {CHR "E" }	296	5
FCB0100086	HHP 3MM {CHR "F" }	296	5
FCB0100087	HHP 3MM {CHR "G" }	296	5
FCB0100088	HHP 3MM {CHR "H" }	296	5
FCB0100089	HHP 3MM {CHR "I" }	296	5
FCB0100090	HHP 3MM {CHR "J" }	296	5
FCB0100091	HHP 3MM {CHR "K" }	296	5
FCB0100092	HHP 3MM {CHR "L" }	296	5
FCB0100093	HHP 3MM {CHR "M" }	296	5
FCB0100094	HHP 3MM {CHR "N" }	296	5
FCB0100095	HHP 3MM {CHR "O" }	296	5
FCB0100096	HHP 3MM {CHR "P" }	296	5
FCB0100097	HHP 3MM {CHR "Q" }	296	5
FCB0100098	HHP 3MM {CHR "R" }	296	5
FCB0100099	HHP 3MM {CHR "S" }	296	5
FCB0100100	HHP 3MM {CHR "T" }	296	5
FCB0100101	HHP 3MM {CHR "U" }	296	5
FCB0100102	HHP 3MM {CHR "V" }	296	5
FCB0100103	HHP 3MM {CHR "W" }	296	5
FCB0100104	HHP 3MM {CHR "X" }	296	5
FCB0100105	HHP 3MM {CHR "Y" }	296	5
FCB0100106	HHP 3MM {CHR "Z" }	296	5

Conventional Marking Systems

ALL RATES ARE IN RUPEES PER PIECE (Excl. of GST)

SAP Code	Description	List Price ₹	MOQ
FCB0100107	HHP 3MM {CHR "1" }	296	5
FCB0100108	HHP 3MM {CHR "2" }	296	5
FCB0100109	HHP 3MM {CHR "3" }	296	5
FCB0100110	HHP 3MM {CHR "4" }	296	5
FCB0100111	HHP 3MM {CHR "5" }	296	5
FCB0100112	HHP 3MM {CHR "6" }	296	5
FCB0100113	HHP 3MM {CHR "7" }	296	5
FCB0100114	HHP 3MM {CHR "8" }	296	5
FCB0100115	HHP 3MM {CHR "9" }	296	5
FCB0100116	HHP 3MM {CHR "DASH" }	296	5
FCB0100117	HHP 3MM {CHR "F.S." }	296	5
FCB0100118	HHP 3MM {CHR "DEC" }	296	5
FCB0100119	HHP 3MM {CHR "STROK" }	296	5
FCB0100120	HHP 3MM {CHR "&" }	296	5
FCB0100121	HHP 4MM {CHR "A" }	341	5
FCB0100122	HHP 4MM {CHR "B" }	341	5
FCB0100123	HHP 4MM {CHR "C" }	341	5
FCB0100124	HHP 4MM {CHR "D" }	341	5
FCB0100125	HHP 4MM {CHR "E" }	341	5
FCB0100126	HHP 4MM {CHR "F" }	341	5
FCB0100127	HHP 4MM {CHR "G" }	341	5
FCB0100128	HHP 4MM {CHR "H" }	341	5
FCB0100129	HHP 4MM {CHR "I" }	341	5
FCB0100130	HHP 4MM {CHR "J" }	341	5
FCB0100131	HHP 4MM {CHR "K" }	341	5
FCB0100132	HHP 4MM {CHR "L" }	341	5

ALL RATES ARE IN RUPEES PER PIECE (Excl. of GST)

SAP Code	Description	List Price ₹	MOQ
FCB0100133	HHP 4MM {CHR "M" }	341	5
FCB0100134	HHP 4MM {CHR "N" }	341	5
FCB0100135	HHP 4MM {CHR "O" }	341	5
FCB0100136	HHP 4MM {CHR "P" }	341	5
FCB0100137	HHP 4MM {CHR "Q" }	341	5
FCB0100138	HHP 4MM {CHR "R" }	341	5
FCB0100139	HHP 4MM {CHR "S" }	341	5
FCB0100140	HHP 4MM {CHR "T" }	341	5
FCB0100141	HHP 4MM {CHR "U" }	341	5
FCB0100142	HHP 4MM {CHR "V" }	341	5
FCB0100143	HHP 4MM {CHR "W" }	341	5
FCB0100144	HHP 4MM {CHR "X" }	341	5
FCB0100145	HHP 4MM {CHR "Y" }	341	5
FCB0100146	HHP 4MM {CHR "Z" }	341	5
FCB0100147	HHP 4MM {CHR "1" }	341	5
FCB0100148	HHP 4MM {CHR "2" }	341	5
FCB0100149	HHP 4MM {CHR "3" }	341	5
FCB0100150	HHP 4MM {CHR "4" }	341	5
FCB0100151	HHP 4MM {CHR "5" }	341	5
FCB0100152	HHP 4MM {CHR "6" }	341	5
FCB0100153	HHP 4MM {CHR "7" }	341	5
FCB0100154	HHP 4MM {CHR "8" }	341	5
FCB0100155	HHP 4MM {CHR "9" }	341	5
FCB0100156	HHP 4MM {CHR "DASH" }	341	5
FCB0100157	HHP 4MM {CHR "F.S." }	757	5
FCB0100158	HHP 4MM {CHR "DEC" }	341	5

Conventional Marking Systems

ALL RATES ARE IN RUPEES PER PIECE (Excl. of GST)

SAP Code	Description	List Price ₹	MOQ
FCB0100159	HHP 4MM {CHR "STROK" }	341	5
FCB0100160	HHP 4MM {CHR "&" }	341	5
FCB0100161	HHP 5MM {CHR "A" }	358	5
FCB0100162	HHP 5MM {CHR "B" }	358	5
FCB0100163	HHP 5MM {CHR "C" }	358	5
FCB0100164	HHP 5MM {CHR "D" }	358	5
FCB0100165	HHP 5MM {CHR "E" }	358	5
FCB0100166	HHP 5MM {CHR "F" }	358	5
FCB0100167	HHP 5MM {CHR "G" }	358	5
FCB0100168	HHP 5MM {CHR "H" }	358	5
FCB0100169	HHP 5MM {CHR "I" }	358	5
FCB0100170	HHP 5MM {CHR "J" }	358	5
FCB0100171	HHP 5MM {CHR "K" }	358	5
FCB0100172	HHP 5MM {CHR "L" }	358	5
FCB0100173	HHP 5MM {CHR "M" }	358	5
FCB0100174	HHP 5MM {CHR "N" }	358	5
FCB0100175	HHP 5MM {CHR "O" }	358	5
FCB0100176	HHP 5MM {CHR "P" }	358	5
FCB0100177	HHP 5MM {CHR "Q" }	358	5
FCB0100178	HHP 5MM {CHR "R" }	358	5
FCB0100179	HHP 5MM {CHR "S" }	358	5
FCB0100180	HHP 5MM {CHR "T" }	358	5
FCB0100181	HHP 5MM {CHR "U" }	358	5
FCB0100182	HHP 5MM {CHR "V" }	358	5
FCB0100183	HHP 5MM {CHR "W" }	358	5
FCB0100184	HHP 5MM {CHR "X" }	358	5

ALL RATES ARE IN RUPEES PER PIECE (Excl. of GST)

SAP Code	Description	List Price ₹	MOQ
FCB0100185	HHP 5MM {CHR "Y" }	358	5
FCB0100186	HHP 5MM {CHR "Z" }	358	5
FCB0100187	HHP 5MM {CHR "1" }	358	5
FCB0100188	HHP 5MM {CHR "2" }	358	5
FCB0100189	HHP 5MM {CHR "3" }	358	5
FCB0100190	HHP 5MM {CHR "4" }	358	5
FCB0100191	HHP 5MM {CHR "5" }	358	5
FCB0100192	HHP 5MM {CHR "6" }	358	5
FCB0100193	HHP 5MM {CHR "7" }	358	5
FCB0100194	HHP 5MM {CHR "8" }	358	5
FCB0100195	HHP 5MM {CHR "9" }	358	5
FCB0100196	HHP 5MM {CHR "DASH" }	358	5
FCB0100197	HHP 5MM {CHR "F.S." }	358	5
FCB0100198	HHP 5MM {CHR "DEC" }	358	5
FCB0100199	HHP 5MM {CHR "STROK" }	358	5
FCB0100200	HHP 5MM {CHR "&" }	358	5
FCB0100201	HHP060 HHP 6MM {CHR "A" }	385	5
FCB0100202	HHP060 HHP 6MM {CHR "B" }	385	5
FCB0100203	HHP060 HHP 6MM {CHR "C" }	385	5
FCB0100204	HHP060 HHP 6MM {CHR "D" }	385	5
FCB0100205	HHP060 HHP 6MM {CHR "E" }	385	5
FCB0100206	HHP060 HHP 6MM {CHR "F" }	385	5
FCB0100207	HHP060 HHP 6MM {CHR "G" }	385	5
FCB0100208	HHP060 HHP 6MM {CHR "H" }	385	5
FCB0100209	HHP060 HHP 6MM {CHR "I" }	385	5
FCB0100210	HHP060 HHP 6MM {CHR "J" }	385	5
FCB0100211	HHP060 HHP 6MM {CHR "K" }	385	5

Conventional Marking Systems

ALL RATES ARE IN RUPEES PER PIECE (Excl. of GST)

SAP Code	Description	List Price ₹	MOQ
FCB0100212	HHP060 HHP 6MM {CHR "L" }	385	5
FCB0100213	HHP060 HHP 6MM {CHR "M" }	385	5
FCB0100214	HHP060 HHP 6MM {CHR "N" }	385	5
FCB0100215	HHP060 HHP 6MM {CHR "O" }	385	5
FCB0100216	HHP060 HHP 6MM {CHR "P" }	385	5
FCB0100217	HHP060 HHP 6MM {CHR "Q" }	385	5
FCB0100218	HHP060 HHP 6MM {CHR "R" }	385	5
FCB0100219	HHP060 HHP 6MM {CHR "S" }	385	5
FCB0100220	HHP060 HHP 6MM {CHR "T" }	385	5
FCB0100221	HHP060 HHP 6MM {CHR "U" }	385	5
FCB0100222	HHP060 HHP 6MM {CHR "V" }	385	5
FCB0100223	HHP060 HHP 6MM {CHR "W" }	385	5
FCB0100224	HHP060 HHP 6MM {CHR "X" }	385	5
FCB0100225	HHP060 HHP 6MM {CHR "Y" }	385	5
FCB0100226	HHP060 HHP 6MM {CHR "Z" }	385	5
FCB0100227	HHP 6MM {CHR "1" }	385	5
FCB0100228	HHP 6MM {CHR "2" }	385	5
FCB0100229	HHP 6MM {CHR "3" }	385	5
FCB0100230	HHP 6MM {CHR "4" }	385	5
FCB0100231	HHP 6MM {CHR "5" }	385	5
FCB0100232	HHP 6MM {CHR "6" }	385	5
FCB0100233	HHP 6MM {CHR "7" }	385	5
FCB0100234	HHP 6MM {CHR "8" }	385	5
FCB0100235	HHP 6MM {CHR "9" }	385	5
FCB0100236	HHP 6MM {CHR "DASH" }	385	5
FCB0100237	HHP 6MM {CHR "F.S." }	385	5
FCB0100238	HHP 6MM {CHR "DEC" }	385	5

ALL RATES ARE IN RUPEES PER PIECE (Excl. of GST)

SAP Code	Description	List Price ₹	MOQ
FCB0100239	HHP 6MM {CHR "STROK" }	385	5
FCB0100240	HHP 6MM {CHR "&" }	385	5
FCB0100241	HHP080 HHP 8MM {CHR "A" }	410	5
FCB0100242	HHP080 HHP 8MM {CHR "B" }	410	5
FCB0100243	HHP080 HHP 8MM {CHR "C" }	410	5
FCB0100244	HHP080 HHP 8MM {CHR "D" }	410	5
FCB0100245	HHP080 HHP 8MM {CHR "E" }	410	5
FCB0100246	HHP080 HHP 8MM {CHR "F" }	410	5
FCB0100247	HHP080 HHP 8MM {CHR "G" }	410	5
FCB0100248	HHP080 HHP 8MM {CHR "H" }	410	5
FCB0100249	HHP080 HHP 8MM {CHR "I" }	410	5
FCB0100250	HHP080 HHP 8MM {CHR "J" }	410	5
FCB0100251	HHP080 HHP 8MM {CHR "K" }	410	5
FCB0100252	HHP080 HHP 8MM {CHR "L" }	410	5
FCB0100253	HHP080 HHP 8MM {CHR "M" }	410	5
FCB0100254	HHP080 HHP 8MM {CHR "N" }	410	5
FCB0100255	HHP080 HHP 8MM {CHR "O" }	410	5
FCB0100256	HHP080 HHP 8MM {CHR "P" }	410	5
FCB0100257	HHP080 HHP 8MM {CHR "Q" }	410	5
FCB0100258	HHP080 HHP 8MM {CHR "R" }	410	5
FCB0100259	HHP080 HHP 8MM {CHR "S" }	410	5
FCB0100260	HHP080 HHP 8MM {CHR "T" }	410	5
FCB0100261	HHP080 HHP 8MM {CHR "U" }	410	5
FCB0100262	HHP080 HHP 8MM {CHR "V" }	410	5
FCB0100263	HHP080 HHP 8MM {CHR "W" }	410	5
FCB0100264	HHP080 HHP 8MM {CHR "X" }	410	5
FCB0100265	HHP080 HHP 8MM {CHR "Y" }	410	5

Conventional Marking Systems

ALL RATES ARE IN RUPEES PER PIECE (Excl. of GST)

SAP Code	Description	List Price ₹	MOQ
FCB0100266	HHP080 HHP 8MM {CHR "Z" }	410	5
FCB0100267	HHP080 HHP 8MM {CHR "1" }	410	5
FCB0100268	HHP080 HHP 8MM {CHR "2" }	410	5
FCB0100269	HHP080 HHP 8MM {CHR "3" }	410	5
FCB0100270	HHP080 HHP 8MM {CHR "4" }	410	5
FCB0100271	HHP080 HHP 8MM {CHR "5" }	410	5
FCB0100272	HHP080 HHP 8MM {CHR "6" }	410	5
FCB0100273	HHP080 HHP 8MM {CHR "7" }	410	5
FCB0100274	HHP080 HHP 8MM {CHR "8" }	410	5
FCB0100275	HHP080 HHP 8MM {CHR "9" }	410	5
FCB0100276	HHP 8MM {CHR "DASH" }	410	5
FCB0100277	HHP 8MM {CHR "F.S." }	410	5
FCB0100278	HHP 8MM {CHR "DEC" }	410	5
FCB0100279	HHP 8MM {CHR "STROK" }	410	5
FCB0100280	HHP 8MM {CHR "&" }	410	5
FCB0100281	HHP 10MM {CHR "A" }	448	5
FCB0100282	HHP 10MM {CHR "B" }	448	5
FCB0100283	HHP 10MM {CHR "C" }	448	5
FCB0100284	HHP 10MM {CHR "D" }	448	5
FCB0100285	HHP 10MM {CHR "E" }	448	5
FCB0100286	HHP 10MM {CHR "F" }	448	5
FCB0100287	HHP 10MM {CHR "G" }	448	5
FCB0100288	HHP 10MM {CHR "H" }	448	5
FCB0100289	HHP 10MM {CHR "I" }	448	5
FCB0100290	HHP 10MM {CHR "J" }	448	5
FCB0100291	HHP 10MM {CHR "K" }	448	5

ALL RATES ARE IN RUPEES PER PIECE (Excl. of GST)

SAP Code	Description	List Price ₹	MOQ
FCB0100292	HHP 10MM {CHR "L" }	448	5
FCB0100293	HHP 10MM {CHR "M" }	448	5
FCB0100294	HHP 10MM {CHR "N" }	448	5
FCB0100295	HHP 10MM {CHR "O" }	448	5
FCB0100296	HHP 10MM {CHR "P" }	448	5
FCB0100297	HHP 10MM {CHR "Q" }	448	5
FCB0100298	HHP 10MM {CHR "R" }	448	5
FCB0100299	HHP 10MM {CHR "S" }	448	5
FCB0100300	HHP 10MM {CHR "T" }	448	5
FCB0100301	HHP 10MM {CHR "U" }	448	5
FCB0100302	HHP 10MM {CHR "V" }	448	5
FCB0100303	HHP 10MM {CHR "W" }	448	5
FCB0100304	HHP 10MM {CHR "X" }	448	5
FCB0100305	HHP 10MM {CHR "Y" }	448	5
FCB0100306	HHP 10MM {CHR "Z" }	448	5
FCB0100307	HHP 10MM {CHR "1" }	448	5
FCB0100308	HHP 10MM {CHR "2" }	448	5
FCB0100309	HHP 10MM {CHR "3" }	448	5
FCB0100310	HHP 10MM {CHR "4" }	448	5
FCB0100311	HHP 10MM {CHR "5" }	448	5
FCB0100312	HHP 10MM {CHR "6" }	448	5
FCB0100313	HHP 10MM {CHR "7" }	448	5
FCB0100314	HHP 10MM {CHR "8" }	448	5
FCB0100315	HHP 10MM {CHR "9" }	448	5
FCB0100316	HHP 10MM {CHR "DASH" }	448	5
FCB0100317	HHP 10MM {CHR "F.S." }	448	5

Conventional Marking Systems

ALL RATES ARE IN RUPEES PER PIECE (Excl. of GST)

SAP Code	Description	List Price ₹	MOQ
FCB0100318	HHP 10MM {CHR "DEC" }	448	5
FCB0100319	HHP 10MM {CHR "STROK" }	448	5
FCB0100320	HHP 10MM {CHR "&" }	448	5
FCB0100321	HHP 16MM {CHR "A" }	2,049	5
FCB0100322	HHP 16MM {CHR "B" }	2,049	5
FCB0100323	HHP 16MM {CHR "C" }	2,049	5
FCB0100324	HHP 16MM {CHR "D" }	2,049	5
FCB0100325	HHP 16MM {CHR "E" }	2,049	5
FCB0100326	HHP 16MM {CHR "F" }	2,049	5
FCB0100327	HHP 16MM {CHR "G" }	2,049	5
FCB0100328	HHP 16MM {CHR "H" }	2,049	5
FCB0100329	HHP 16MM {CHR "I" }	2,049	5
FCB0100330	HHP 16MM {CHR "J" }	2,049	5
FCB0100331	HHP 16MM {CHR "K" }	2,049	5
FCB0100332	HHP 16MM {CHR "L" }	2,049	5
FCB0100333	HHP 16MM {CHR "M" }	2,049	5
FCB0100334	HHP 16MM {CHR "N" }	2,049	5
FCB0100335	HHP 16MM {CHR "O" }	2,049	5
FCB0100336	HHP 16MM {CHR "P" }	2,049	5
FCB0100337	HHP 16MM {CHR "Q" }	2,049	5
FCB0100338	HHP 16MM {CHR "R" }	2,049	5
FCB0100339	HHP 16MM {CHR "S" }	2,049	5
FCB0100340	HHP 16MM {CHR "T" }	2,049	5
FCB0100341	HHP 16MM {CHR "U" }	2,049	5
FCB0100342	HHP 16MM {CHR "V" }	2,049	5
FCB0100343	HHP 16MM {CHR "W" }	2,049	5

ALL RATES ARE IN RUPEES PER PIECE (Excl. of GST)

SAP Code	Description	List Price ₹	MOQ
FCB0100344	HHP 16MM {CHR "X" }	2,049	5
FCB0100345	HHP 16MM {CHR "Y" }	2,049	5
FCB0100346	HHP 16MM {CHR "Z" }	2,049	5
FCB0100347	HHP 16MM {CHR "1" }	2,049	5
FCB0100348	HHP 16MM {CHR "2" }	2,049	5
FCB0100349	HHP 16MM {CHR "3" }	2,049	5
FCB0100350	HHP 16MM {CHR "4" }	2,049	5
FCB0100351	HHP 16MM {CHR "5" }	2,049	5
FCB0100352	HHP 16MM {CHR "6" }	2,049	5
FCB0100353	HHP 16MM {CHR "7" }	2,049	5
FCB0100354	HHP 16MM {CHR "8" }	2,049	5
FCB0100355	HHP 16MM {CHR "9" }	2,049	5
FCB0100356	HHP 16MM {CHR "DASH" }	2,049	5
FCB0100357	HHP 16MM {CHR "F.S." }	2,049	5
FCB0100358	HHP 16MM {CHR "DEC" }	2,049	5
FCB0100359	HHP 16MM {CHR "STROK" }	2,049	5
FCB0100360	HHP 16MM {CHR "&" }	2,049	5
FCB0100361	26HHP030 HHP ALPHA SET A TO Z SIZE 3MM	7,262	1
FCB0100362	26HHP060 HHP ALPHA SET A TO Z SIZE 6MM	9,145	1
FCB0100363	26HHP080 HHP ALPHA SET A TO Z SIZE 8MM	10,347	1
FCB0100364	26HHP100 HHP ALPHA SET A TO Z SIZE 10MM	11,225	1
FCB0100365	9HHP030 HHP NUMBER SET 0 TO 8 SIZE 3MM	2,561	1
FCB0100366	9HHP060 HHP NUMBER SET 0 TO 8 SIZE 6MM	3,235	1
FCB0100367	9HHP080 HHP NUMBER SET 0 TO 8 SIZE 8MM	3,791	1
FCB0100368	9HHP100 HHP NUMBER SET 0 TO 8 SIZE 10MM	3,971	1
FCB0100369	26HHP062 ALPHA SET A TO Z SIZE 1.6MM	7,679	2

Conventional Marking Systems

ALL RATES ARE IN RUPEES PER PIECE (Excl. of GST)

SAP Code	Description	List Price ₹	MOQ
FCB0100370	26HHP020 HHP ALPHA SET A T O Z SIZE 2MM	7,679	1
FCB0100371	26HHP040 HHP ALPHA SET A T O Z SIZE 4MM	9,029	1
FCB0100372	26HHP050 HHP ALPHA SET A T O Z SIZE 5MM	9,029	1
FCB0100373	9HHP062 HHP NUMBER SET 0 TO 8 SIZE 1.6MM	2,824	2
FCB0100374	9HHP020 HHP NUMBER SET 0 TO 8 SIZE 2MM	2,804	1
FCB0100375	9HHP040 HHP NUMBER SET 0 TO 8 SIZE 4MM	3,195	1
FCB0100376	9HHP050 HHP NUMBER SET 0 TO 8 SIZE 5MM	3,235	1
FCB0100377	9HHP120 HHP NUMBER SET 0 TO 8 SIZE 12MM	7,338	1
FCB0100378	26HHP120 HHP ALPHA SET A TO Z SIZE 12MM	20,266	1
FCB0100379	HHP 20MM {CHR "A" }	8,104	5
FCB0100380	HHP 20MM {CHR "B" }	2,355	5
FCB0100381	HHP 20MM {CHR "C" }	3,073	5
FCB0100382	HHP 20MM {CHR "D" }	3,073	5
FCB0100383	HHP 20MM {CHR "E" }	3,073	5
FCB0100384	HHP 20MM {CHR "F" }	3,073	5
FCB0100385	HHP 20MM {CHR "G" }	3,073	5
FCB0100386	HHP 20MM {CHR "H" }	3,073	5
FCB0100387	HHP 20MM {CHR "I" }	3,073	5
FCB0100388	HHP 20MM {CHR "J" }	3,073	5
FCB0100389	HHP 20MM {CHR "K" }	3,073	5
FCB0100390	HHP 20MM {CHR "L" }	3,073	5
FCB0100391	HHP 20MM {CHR "M" }	3,073	5
FCB0100392	HHP 20MM {CHR "N" }	3,073	5
FCB0100393	HHP 20MM {CHR "O" }	3,073	5
FCB0100394	HHP 20MM {CHR "P" }	3,073	5
FCB0100395	HHP 20MM {CHR "Q" }	3,073	5

ALL RATES ARE IN RUPEES PER PIECE (Excl. of GST)

SAP Code	Description	List Price ₹	MOQ
FCB0100396	HHP 20MM {CHR "R" }	3,073	5
FCB0100397	HHP 20MM {CHR "S" }	3,073	5
FCB0100398	HHP 20MM {CHR "T" }	3,073	5
FCB0100399	HHP 20MM {CHR "U" }	3,073	5
FCB0100400	HHP 20MM {CHR "V" }	3,073	5
FCB0100401	HHP 20MM {CHR "W" }	3,073	5
FCB0100402	HHP 20MM {CHR "X" }	3,073	5
FCB0100403	HHP 20MM {CHR "Y" }	3,073	5
FCB0100404	HHP 20MM {CHR "Z" }	3,073	5
FCB0100405	HHP 20MM {CHR "1" }	3,073	5
FCB0100406	HHP 20MM {CHR "2" }	3,073	5
FCB0100407	HHP 20MM {CHR "3" }	3,073	5
FCB0100408	HHP 20MM {CHR "4" }	3,073	5
FCB0100409	HHP 20MM {CHR "5" }	3,073	5
FCB0100410	HHP 20MM {CHR "6" }	3,073	5
FCB0100411	HHP 20MM {CHR "7" }	3,073	5
FCB0100412	HHP 20MM {CHR "8" }	3,073	5
FCB0100413	HHP 20MM {CHR "9" }	3,073	5
FCB0100414	HHP 20MM {CHR "DASH" }	3,073	5
FCB0100415	HHP 20MM {CHR "F.S." }	3,073	5
FCB0100416	HHP 20MM {CHR "DEC" }	3,073	5
FCB0100417	HHP 20MM {CHR "STROK" }	3,073	5
FCB0100418	HHP 20MM {CHR "&" }	3,073	5
FCB0100419	HHP 12MM {CHR "A" }	897	5
FCB0100420	HHP 12MM {CHR "B" }	897	5
FCB0100421	HHP 12MM {CHR "C" }	897	5

Conventional Marking Systems

ALL RATES ARE IN RUPEES PER PIECE (Excl. of GST)

SAP Code	Description	List Price ₹	MOQ
FCB0100422	HHP 12MM {CHR "D" }	897	5
FCB0100423	HHP 12MM {CHR "E" }	897	5
FCB0100424	HHP 12MM {CHR "F" }	897	5
FCB0100425	HHP 12MM {CHR "G" }	897	5
FCB0100426	HHP 12MM {CHR "H" }	897	5
FCB0100427	HHP 12MM {CHR "I" }	897	5
FCB0100428	HHP 12MM {CHR "J" }	897	5
FCB0100429	HHP 12MM {CHR "K" }	897	5
FCB0100430	HHP 12MM {CHR "L" }	897	5
FCB0100431	HHP 12MM {CHR "M" }	897	5
FCB0100432	HHP 12MM {CHR "N" }	897	5
FCB0100433	HHP 12MM {CHR "O" }	897	5
FCB0100434	HHP 12MM {CHR "P" }	897	5
FCB0100435	HHP 12MM {CHR "Q" }	897	5
FCB0100436	HHP 12MM {CHR "R" }	897	5
FCB0100437	HHP 12MM {CHR "S" }	897	5
FCB0100438	HHP 12MM {CHR "T" }	897	5
FCB0100439	HHP 12MM {CHR "U" }	897	5
FCB0100440	HHP 12MM {CHR "V" }	897	5
FCB0100441	HHP 12MM {CHR "W" }	897	5
FCB0100442	HHP 12MM {CHR "X" }	897	5
FCB0100443	HHP 12MM {CHR "Y" }	897	5
FCB0100444	HHP 12MM {CHR "Z" }	897	5
FCB0100445	HHP 12MM {CHR "1" }	897	5
FCB0100446	HHP 12MM {CHR "2" }	897	5
FCB0100447	HHP 12MM {CHR "3" }	897	5

ALL RATES ARE IN RUPEES PER PIECE (Excl. of GST)

SAP Code	Description	List Price ₹	MOQ
FCB0100448	HHP 12MM {CHR "4" }	897	5
FCB0100449	HHP 12MM {CHR "5" }	897	5
FCB0100450	HHP 12MM {CHR "6" }	897	5
FCB0100451	HHP 12MM {CHR "7" }	897	5
FCB0100452	HHP 12MM {CHR "8" }	897	5
FCB0100453	HHP 12MM {CHR "9" }	897	5
FCB0100457	HHP 12MM {CHR "STROK" }	897	5
FCB0100458	HHP 12MM {CHR "&" }	897	5
FCB0100499	HAND PUNCH ALPHA SET A T O Z SIZE 16MM	44,664	1
FCB0100501	9HHP200 HHP NUMBER SET 0T08 SIZE 20MM	19,210	1
FCB0100505	HHP030D Hand Punch Dotted Size 3mm CHR"A	730	5
FCB0100506	HHP030D Hand Punch Dotted Size 3mm CHR"B	730	5
FCB0100507	HHP030D Hand Punch Dotted Size 3mm CHR"C	730	5
FCB0100508	HHP030D Hand Punch Dotted Size 3mm CHR"D	730	5
FCB0100509	HHP030D Hand Punch Dotted Size 3mm CHR"E	730	5
FCB0100510	HHP030D Hand Punch Dotted Size 3mm CHR"F	730	5
FCB0100511	HHP030D Hand Punch Dotted Size 3mm CHR"G	730	5
FCB0100512	HHP030D Hand Punch Dotted Size 3mm CHR"H	730	5
FCB0100513	HHP030D Hand Punch Dotted Size 3mm CHR"I	730	5
FCB0100514	HHP030D Hand Punch Dotted Size 3mm CHR"J	730	5
FCB0100515	HHP030D Hand Punch Dotted Size 3mm CHR"K	730	5
FCB0100516	HHP030D Hand Punch Dotted Size 3mm CHR"L	730	5
FCB0100517	HHP030D Hand Punch Dotted Size 3mm CHR"M	730	5
FCB0100518	HHP030D Hand Punch Dotted Size 3mm CHR"N	730	5
FCB0100519	HHP030D Hand Punch Dotted Size 3mm CHR"O	730	5
FCB0100520	HHP030D Hand Punch Dotted Size 3mm CHR"P	730	5

Conventional Marking Systems

ALL RATES ARE IN RUPEES PER PIECE (Excl. of GST)

ALL RATES ARE IN RUPEES PER PIECE (Excl. of GST)

SAP Code	Description	List Price ₹	MOQ
FCB0100521	HHP030D Hand Punch Dotted Size 3mm CHR"Q	730	5
FCB0100522	HHP030D Hand Punch Dotted Size 3mm CHR"R	730	5
FCB0100523	HHP030D Hand Punch Dotted Size 3mm CHR"S	730	5
FCB0100524	HHP030D Hand Punch Dotted Size 3mm CHR"T	730	5
FCB0100525	HHP030D Hand Punch Dotted Size 3mm CHR"U	730	5
FCB0100526	HHP030D Hand Punch Dotted Size 3mm CHR"V	730	5
FCB0100527	HHP030D Hand Punch Dotted Size 3mm CHR"W	730	5
FCB0100528	HHP030D Hand Punch Dotted Size 3mm CHR"X	730	5
FCB0100529	HHP030D Hand Punch Dotted Size 3mm CHR"Y	730	5
FCB0100530	HHP030D Hand Punch Dotted Size 3mm CHR"Z	730	5
FCB0100531	HHP030D Hand Punch Dotted Size 3mm CHR"1	730	5
FCB0100532	HHP030D Hand Punch Dotted Size 3mm CHR"2	730	5
FCB0100533	HHP030D Hand Punch Dotted Size 3mm CHR"3	730	5
FCB0100534	HHP030D Hand Punch Dotted Size 3mm CHR"4	730	5
FCB0100535	HHP030D Hand Punch Dotted Size 3mm CHR"5	730	5
FCB0100536	HHP030D Hand Punch Dotted Size 3mm CHR"6	730	5
FCB0100537	HHP030D Hand Punch Dotted Size 3mm CHR"7	730	5
FCB0100538	HHP030D Hand Punch Dotted Size 3mm CHR"8	730	5
FCB0100539	HHP030D Hand Punch Dotted Size 3mm CHR"9	730	5
FCB0100540	HHP NUMBER SET 0 TO 8 SIZE 3MM (DOTTED)	6,698	1
FCB0100541	HHP ALPHA SET A T O Z SIZE 3MM (DOTTED)	19,184	1
FCB0100542	HHP040D Hand Punch Dotted Size 4mm CHR"A	909	5
FCB0100543	HHP040D Hand Punch Dotted Size 4mm CHR"B	909	5
FCB0100544	HHP040D Hand Punch Dotted Size 4mm CHR"C	909	5
FCB0100545	HHP040D Hand Punch Dotted Size 4mm CHR"D	909	5
FCB0100546	HHP040D Hand Punch Dotted Size 4mm CHR"E	909	5

SAP Code	Description	List Price ₹	MOQ
FCB0100547	HHP040D Hand Punch Dotted Size 4mm CHR"F	909	5
FCB0100548	HHP040D Hand Punch Dotted Size 4mm CHR"G	909	5
FCB0100549	HHP040D Hand Punch Dotted Size 4mm CHR"H	909	5
FCB0100550	HHP040D Hand Punch Dotted Size 4mm CHR"I	909	5
FCB0100551	HHP040D Hand Punch Dotted Size 4mm CHR"J	909	5
FCB0100552	HHP040D Hand Punch Dotted Size 4mm CHR"K	909	5
FCB0100553	HHP040D Hand Punch Dotted Size 4mm CHR"L	909	5
FCB0100554	HHP040D Hand Punch Dotted Size 4mm CHR"M	909	5
FCB0100555	HHP040D Hand Punch Dotted Size 4mm CHR"N	909	5
FCB0100556	HHP040D Hand Punch Dotted Size 4mm CHR"O	909	5
FCB0100557	HHP040D Hand Punch Dotted Size 4mm CHR"P	909	5
FCB0100558	HHP040D Hand Punch Dotted Size 4mm CHR"Q	909	5
FCB0100559	HHP040D Hand Punch Dotted Size 4mm CHR"R	909	5
FCB0100560	HHP040D Hand Punch Dotted Size 4mm CHR"S	909	5
FCB0100561	HHP040D Hand Punch Dotted Size 4mm CHR"T	909	5
FCB0100562	HHP040D Hand Punch Dotted Size 4mm CHR"U	909	5
FCB0100563	HHP040D Hand Punch Dotted Size 4mm CHR"V	909	5
FCB0100564	HHP040D Hand Punch Dotted Size 4mm CHR"W	909	5
FCB0100565	HHP040D Hand Punch Dotted Size 4mm CHR"X	909	5
FCB0100566	HHP040D Hand Punch Dotted Size 4mm CHR"Y	909	5
FCB0100567	HHP040D Hand Punch Dotted Size 4mm CHR"Z	909	5
FCB0100568	HHP040D Hand Punch Dotted Size 4mm CHR"1	909	5
FCB0100569	HHP040D Hand Punch Dotted Size 4mm CHR"2	909	5
FCB0100570	HHP040D Hand Punch Dotted Size 4mm CHR"3	909	5
FCB0100571	HHP040D Hand Punch Dotted Size 4mm CHR"4	909	5
FCB0100572	HHP040D Hand Punch Dotted Size 4mm CHR"5	909	5

Conventional Marking Systems

ALL RATES ARE IN RUPEES PER PIECE (Excl. of GST)

SAP Code	Description	List Price ₹	MOQ
FCB0100573	HHP040D Hand Punch Dotted Size 4mm CHR"6	909	5
FCB0100574	HHP040D Hand Punch Dotted Size 4mm CHR"7	909	5
FCB0100575	HHP040D Hand Punch Dotted Size 4mm CHR"8	909	5
FCB0100577	HHP NUMBER SET 0 TO 8 SIZE 4MM (DOTTED)	8,312	1
FCB0100578	HHP ALPHA SET A T O Z SIZE 4MM (DOTTED)	23,846	1
FCB0100579	HHP050D Hand Punch Dotted Size 5mm CHR"A	999	5
FCB0100580	HHP050D Hand Punch Dotted Size 5mm CHR"B	999	5
FCB0100581	HHP050D Hand Punch Dotted Size 5mm CHR"C	999	5
FCB0100582	HHP050D Hand Punch Dotted Size 5mm CHR"D	999	5
FCB0100583	HHP050D Hand Punch Dotted Size 5mm CHR"E	999	5
FCB0100584	HHP050D Hand Punch Dotted Size 5mm CHR"F	999	5
FCB0100585	HHP050D Hand Punch Dotted Size 5mm CHR"G	999	5
FCB0100586	HHP050D Hand Punch Dotted Size 5mm CHR"H	999	5
FCB0100587	HHP050D Hand Punch Dotted Size 5mm CHR"I	999	5
FCB0100588	HHP050D Hand Punch Dotted Size 5mm CHR"J	999	5
FCB0100589	HHP050D Hand Punch Dotted Size 5mm CHR"K	999	5
FCB0100590	HHP050D Hand Punch Dotted Size 5mm CHR"L	999	5
FCB0100591	HHP050D Hand Punch Dotted Size 5mm CHR"M	999	5
FCB0100592	HHP050D Hand Punch Dotted Size 5mm CHR"N	999	5
FCB0100593	HHP050D Hand Punch Dotted Size 5mm CHR"O	999	5
FCB0100594	HHP050D Hand Punch Dotted Size 5mm CHR"P	999	5
FCB0100595	HHP050D Hand Punch Dotted Size 5mm CHR"Q	999	5
FCB0100596	HHP050D Hand Punch Dotted Size 5mm CHR"R	999	5
FCB0100597	HHP050D Hand Punch Dotted Size 5mm CHR"S	999	5
FCB0100598	HHP050D Hand Punch Dotted Size 5mm CHR"T	999	5
FCB0100599	HHP050D Hand Punch Dotted Size 5mm CHR"U	999	5

ALL RATES ARE IN RUPEES PER PIECE (Excl. of GST)

SAP Code	Description	List Price ₹	MOQ
FCB0100600	HHP050D Hand Punch Dotted Size 5mm CHR"V	999	5
FCB0100601	HHP050D Hand Punch Dotted Size 5mm CHR"W	999	5
FCB0100602	HHP050D Hand Punch Dotted Size 5mm CHR"X	999	5
FCB0100603	HHP050D Hand Punch Dotted Size 5mm CHR"Y	999	5
FCB0100604	HHP050D Hand Punch Dotted Size 5mm CHR"Z	999	5
FCB0100605	HHP050D Hand Punch Dotted Size 5mm CHR"1	999	5
FCB0100606	HHP050D Hand Punch Dotted Size 5mm CHR"2	999	5
FCB0100607	HHP050D Hand Punch Dotted Size 5mm CHR"3	999	5
FCB0100608	HHP050D Hand Punch Dotted Size 5mm CHR"4	999	5
FCB0100609	HHP050D Hand Punch Dotted Size 5mm CHR"5	999	5
FCB0100610	HHP050D Hand Punch Dotted Size 5mm CHR"6	999	5
FCB0100611	HHP050D Hand Punch Dotted Size 5mm CHR"7	999	5
FCB0100612	HHP050D Hand Punch Dotted Size 5mm CHR"8	999	5
FCB0100614	9HHP050D Hand Punch Dotted Number Set 0-	9,118	1
FCB0100615	26HHP050D Hand Punch Dotted Alpha Set A-	26,177	1
FCB0100616	HHP060D Hand Punch Dotted Size 6mm CHR"A	1,044	5
FCB0100617	HHP060D Hand Punch Dotted Size 6mm CHR"B	1,044	5
FCB0100618	HHP060D Hand Punch Dotted Size 6mm CHR"C	1,044	5
FCB0100619	HHP060D Hand Punch Dotted Size 6mm CHR"D	1,044	5
FCB0100620	HHP060D Hand Punch Dotted Size 6mm CHR"E	1,044	5
FCB0100621	HHP060D Hand Punch Dotted Size 6mm CHR"F	1,044	5
FCB0100622	HHP060D Hand Punch Dotted Size 6mm CHR"G	1,044	5
FCB0100623	HHP060D Hand Punch Dotted Size 6mm CHR"H	1,044	5
FCB0100624	HHP060D Hand Punch Dotted Size 6mm CHR"I	1,044	5
FCB0100625	HHP060D Hand Punch Dotted Size 6mm CHR"J	1,044	5
FCB0100626	HHP060D Hand Punch Dotted Size 6mm CHR"K	1,044	5

Conventional Marking Systems

ALL RATES ARE IN RUPEES PER PIECE (Excl. of GST)

SAP Code	Description	List Price ₹	MOQ
FCB0100627	HHP060D Hand Punch Dotted Size 6mm CHR"L	1,044	5
FCB0100628	HHP060D Hand Punch Dotted Size 6mm CHR"M	1,044	5
FCB0100629	HHP060D Hand Punch Dotted Size 6mm CHR"N	1,044	5
FCB0100630	HHP060D Hand Punch Dotted Size 6mm CHR"O	1,044	5
FCB0100631	HHP060D Hand Punch Dotted Size 6mm CHR"P	1,044	5
FCB0100632	HHP060D Hand Punch Dotted Size 6mm CHR"Q	1,044	5
FCB0100633	HHP060D Hand Punch Dotted Size 6mm CHR"R	1,044	5
FCB0100634	HHP060D Hand Punch Dotted Size 6mm CHR"S	1,044	5
FCB0100635	HHP060D Hand Punch Dotted Size 6mm CHR"T	1,044	5
FCB0100636	HHP060D Hand Punch Dotted Size 6mm CHR"U	1,044	5
FCB0100637	HHP060D Hand Punch Dotted Size 6mm CHR"V	1,044	5
FCB0100638	HHP060D Hand Punch Dotted Size 6mm CHR"W	1,044	5
FCB0100639	HHP060D Hand Punch Dotted Size 6mm CHR"X	1,044	5
FCB0100640	HHP060D Hand Punch Dotted Size 6mm CHR"Y	1,044	5
FCB0100641	HHP060D Hand Punch Dotted Size 6mm CHR"Z	1,044	5
FCB0100642	HHP060D Hand Punch Dotted Size 6mm CHR"1	1,044	5
FCB0100643	HHP060D Hand Punch Dotted Size 6mm CHR"2	1,044	5
FCB0100644	HHP060D Hand Punch Dotted Size 6mm CHR"3	1,044	5
FCB0100645	HHP060D Hand Punch Dotted Size 6mm CHR"4	1,044	5
FCB0100646	HHP060D Hand Punch Dotted Size 6mm CHR"5	1,044	5
FCB0100647	HHP060D Hand Punch Dotted Size 6mm CHR"6	1,044	5
FCB0100648	HHP060D Hand Punch Dotted Size 6mm CHR"7	1,044	5
FCB0100649	HHP060D Hand Punch Dotted Size 6mm CHR"8	1,044	5
FCB0100651	9HHP060D Hand Punch Dotted Number Set 0-	9,523	1
FCB0100652	26HHP060D Hand Punch Dotted Alpha Set A-	23,609	1
FCB0100653	HHP080D Hand Punch Dotted Size 8mm CHR"A	1,224	5

ALL RATES ARE IN RUPEES PER PIECE (Excl. of GST)

SAP Code	Description	List Price ₹	MOQ
FCB0100654	HHP080D Hand Punch Dotted Size 8mm CHR"B	1,224	5
FCB0100655	HHP080D Hand Punch Dotted Size 8mm CHR"C	1,224	5
FCB0100656	HHP080D Hand Punch Dotted Size 8mm CHR"D	1,224	5
FCB0100657	HHP080D Hand Punch Dotted Size 8mm CHR"E	1,224	5
FCB0100658	HHP080D Hand Punch Dotted Size 8mm CHR"F	1,224	5
FCB0100659	HHP080D Hand Punch Dotted Size 8mm CHR"G	1,224	5
FCB0100660	HHP080D Hand Punch Dotted Size 8mm CHR"H	1,224	5
FCB0100661	HHP080D Hand Punch Dotted Size 8mm CHR"I	1,224	5
FCB0100662	HHP080D Hand Punch Dotted Size 8mm CHR"J	1,224	5
FCB0100663	HHP080D Hand Punch Dotted Size 8mm CHR"K	1,224	5
FCB0100664	HHP080D Hand Punch Dotted Size 8mm CHR"L	1,224	5
FCB0100665	HHP080D Hand Punch Dotted Size 8mm CHR"M	1,224	5
FCB0100666	HHP080D Hand Punch Dotted Size 8mm CHR"N	1,224	5
FCB0100667	HHP080D Hand Punch Dotted Size 8mm CHR"O	1,224	5
FCB0100668	HHP080D Hand Punch Dotted Size 8mm CHR"P	1,224	5
FCB0100669	HHP080D Hand Punch Dotted Size 8mm CHR"Q	1,224	5
FCB0100670	HHP080D Hand Punch Dotted Size 8mm CHR"R	1,224	5
FCB0100671	HHP080D Hand Punch Dotted Size 8mm CHR"S	1,224	5
FCB0100672	HHP080D Hand Punch Dotted Size 8mm CHR"T	1,224	5
FCB0100673	HHP080D Hand Punch Dotted Size 8mm CHR"U	1,224	5
FCB0100674	HHP080D Hand Punch Dotted Size 8mm CHR"V	1,224	5
FCB0100675	HHP080D Hand Punch Dotted Size 8mm CHR"W	1,224	5
FCB0100676	HHP080D Hand Punch Dotted Size 8mm CHR"X	1,224	5
FCB0100677	HHP080D Hand Punch Dotted Size 8mm CHR"Y	1,224	5
FCB0100678	HHP080D Hand Punch Dotted Size 8mm CHR"Z	1,224	5
FCB0100679	HHP080D Hand Punch Dotted Size 8mm CHR"1	1,224	5

Conventional Marking Systems

ALL RATES ARE IN RUPEES PER PIECE (Excl. of GST)

SAP Code	Description	List Price ₹	MOQ
FCB0100680	HHP080D Hand Punch Dotted Size 8mm CHR"2	1,224	5
FCB0100681	HHP080D Hand Punch Dotted Size 8mm CHR"3	1,224	5
FCB0100682	HHP080D Hand Punch Dotted Size 8mm CHR"4	1,224	5
FCB0100683	HHP080D Hand Punch Dotted Size 8mm CHR"5	1,224	5
FCB0100684	HHP080D Hand Punch Dotted Size 8mm CHR"6	1,224	5
FCB0100685	HHP080D Hand Punch Dotted Size 8mm CHR"7	1,224	5
FCB0100686	HHP080D Hand Punch Dotted Size 8mm CHR"8	1,224	5
FCB0100688	9HHP080D HAND PUNCH DOTTED NUMBER SET 0-	11,135	1
FCB0100689	26HHP080D Hand Punch Dotted Alpha Set A-	32,695	1
FCB0100694	HHP080D HAND PUNCH DOTTED 8MM CHR "&"	1,224	5
FCB0100700	HHP030D DOTTED HAND PUNCH 3MM CHR "&"	730	5
FCB0101255	LOW STRESS DOTTED HHP SET (A-Z)SIZE 1/4"	14,213	2
FCB0101256	LOW STRESS DOTTED HHP SET (0-9)SIZE 1/4"	10,896	2
FCB0101373	HHP SET SIZE 1/2" (0-8)	17,733	2
FCB0101419	HHP 25MM {CHR "T" }	3,183	0
FCB0101442	LOW STRESS DOTTED HHP SET (0-8)SIZE 10MM	16,550	1
FCB0101453	HHP ALPHA SET (A-Z) OF S IZE 3/16"	13,873	0
FCB0101587	LOW STRESS DOTTED HHP SET (A-Z) 10MM	35,859	1
FCB0101588	LOW STRESS DOTTED HHP SET (0-8) 10 MM	16,550	1
FCB0101720	HHP SET 20MM (A-Z)	61,777	1
FCB0101721	HHP SET 20MM (0-8)	21,262	1
FCC0100001	6RTN3 RTN ASSY HAND 3MM 6WHEELS	19,171	2
FCC0100002	6RTN4 RTN ASSY HAND 4MM 6WHEEL S	27,198	2
FCC0100003	6RTN3M RTN ASSY M/C 3MM 6WHEELS	19,633	2
FCC0100004	6RTN2M RTN ASSY M/C 2MM 6WHEELS	20,195	2
FCC0100005	6RTN4M RTN ASSY M/C 4MM 6WHEELS	27,088	0

ALL RATES ARE IN RUPEES PER PIECE (Excl. of GST)

SAP Code	Description	List Price ₹	MOQ
FCC0100006	5RTN5M RTN ASSY M/C 5MM 5WHEELS	25,067	0
FCC0100007	5RTN5 RTN ASSY HAND 5MM 5WHEEL S	31,991	0
FCC0100008	90139 RTN NUMBER WHEEL 2MM 0-9	3,175	5
FCC0100009	90140 INDEXING PIN (2 MM) RTN	1,011	2
FCC0100010	90616 RTN NUMBER WHEEL 4MM 0-9	4,219	5
FCC0100011	90617 INDEXING PIN (4MM) RTN	1,948	0
FCC0100012	90143 RTN NUMBER WHEEL 3MM 0-9	2,999	5
FCC0100013	90383 RTN ALPHA WHEEL 2MM A-J	3,100	5
FCC0100014	90384 RTN ALPHA WHEEL 2MM K-T	3,100	5
FCC0100015	90387 RTN ALPHA WHEEL 3MM A-J	3,035	5
FCC0100016	90626 RTN NUMBER WHEEL 5MM 0-9	4,421	5
FCC0100017	90933 RTN ALPHA WHEEL 4MM A-J	3,710	5
FCC0100018	90934 RTN ALPHA WHEEL 4MM K-T	3,740	5
FCC0100019	90144 INDEXING PIN (3 MM) RTN	1,895	2
FCC0100020	90388 RTN ALPHA WHEEL 3MM K-T	3,035	5
FCC0100021	90389 RTN ALPHA WHEEL 3MM U-Z	3,011	5
FCC0100023	90937 RTN ALPHA WHEEL 5MM A-J	4,510	5
FCC0100024	90385 RTN ALPHA WHEEL 2MM U-Z	3,100	5
FCC0100025	90935 RTN ALPHA WHEEL 4MM U-Z	8,500	5
FCC0100026	90938 RTN ALPHA WHEEL 5MM K-T	4,546	5
FCC0100027	90939 RTN ALPHA WHEEL 5MM U-Z	4,510	5
FCC0100029	96058 ACTUATING PAWL (1.6 MM) ARN	8,934	0
FCC0100030	96038 ACTUATING PAWL (2 MM) ARN	7,028	0
FCC0100031	96011 ACTUATING PAWL (3 MM) ARN	8,061	2
FCC0100032	ACTUATING LEVER (6 MM) ARN	7,087	0
FCC0100034	96636 ACTUATING PAWL (4/5 MM) ARN	8,312	0
FCC0100037	96637 SPRING FOR ACT. PAWL (4,5,6 MM)ARN	204	0

Conventional Marking Systems

ALL RATES ARE IN RUPEES PER PIECE (Excl. of GST)

SAP Code	Description	List Price ₹	MOQ
FCC0100038	96018 PIN FOR ACTUATING PAWL(3 MM) ARN	204	0
FCC0100040	96087 PIN FOR ACTUATING PAWL(3 MM) ARN	204	0
FCC0100043	96828 ACTUATING PAWL(6 MM) ARN	11,263	2
FCC0100048	96010 SPRING FOR LEVER LH (1.6,2MM)ARN	186	2
FCC0100049	TENS HOLDING CATCH (1.6 MM) ARN	1,576	2
FCC0100050	96646 TENS HOLDING CATCH (4/5/6 MM) ARN	1,864	2
FCC0100051	96638 DIGIT HOLDING CATCH (4/5/6 MM) ARN	1,853	0
FCC0100053	96008 HANDLE (3 MM) ARN	319	0
FCC0100054	96634 SPRING FOR LEVER RH (4,5MM) ARN	204	0
FCC0100055	96635 SPRING FOR LEVER LH (4,5MM) ARN	204	0
FCC0100056	96019 SPRING PIN (1.6,2 MM) ARN	109	0
FCC0100057	96014 TENS HOLDING CATCH (3 MM) ARN	1,576	2
FCC0100058	96080 ALPHA WHEEL 3MM K TO T ARN	6,410	2
FCC0100060	96040 TENS HOLDING CATCH (2 MM) ARN	1,576	2
FCC0100061	96616 TENS WHEEL 4MM 0-9 ARN	7,480	0
FCC0100064	96867 SPRING BAR ASSY. 3 MM ARN	4,401	2
FCC0100065	96093 SPRING FOR LEVER RH (3 MM) ARN	206	2
FCC0100066	96094 SPRING FOR LEVER LH (3 MM) ARN	206	2
FCC0100068	96039 DIGIT HOLDING CATCH (2 M M) ARN	1,097	2
FCC0100069	96016 SPRING WIRE LONG (1.83X6 9) ARN	134	0
FCC0100070	96017 SPRING WIRE SHORT (1.51X 39.5)ARN	134	0
FCC0100071	96020 STOP PIN (1.6,2 MM) ARN	109	0
FCC0100072	96006 MAKE UP WASHER (1.6/2/3) ARN	173	2
FCC0100073	96013 DIGIT HOLDING CATCH (3 M M) ARN	1,576	2
FCC0100074	96024 KNIFE ASSY. (FOR ALL ARN)	294	0
FCC0100075	96909 SPRING FOR LEVER RH (8,1 0 MM) ARN	204	0
FCC0100076	96910 SPRING FOR LEVER LH (8,1 0 MM) ARN	204	0

ALL RATES ARE IN RUPEES PER PIECE (Excl. of GST)

SAP Code	Description	List Price ₹	MOQ
FCC0100077	CENTRE SHAFT 2MM ARN 96033	1,100	0
FCC0100078	CENTRE SHAFT 3MM ARN 96003	1,204	0
FCC0100081	96640 SPRING WIRE LONG (2.03X7 3.5) ARN	121	0
FCC0100084	96641 SPRING WIRE SHORT (1.60X 3.3) ARN	84	0
FCC0100086	96092 SPRING PIN (3MM) ARN	204	0
FCC0100087	10AN030 AUTO NUMERATOR ASSY 3MM 10WHEELS	69,031	0
FCC0100088	10AN040 AUTO NUMERATOR ASSY 4MM 10WHEELS	99,739	0
FCC0100089	6AN020 AUTO NUMERATOR ASSY 2MM 6WHEELS	49,529	0
FCC0100090	6AN030 AUTO NUMERATOR ASSY 3MM 6WHEELS	44,779	1
FCC0100091	6AN040 AUTO NUMERATOR ASSY 4MM 6WHEELS	54,745	0
FCC0100092	6AN050 AUTO NUMERATOR ASSY 5MM 6WHEELS	68,115	0
FCC0100093	6AN060 AUTO NUMERATOR ASSY 6MM 6WHEELS	76,072	0
FCC0100094	6AN062 AUTO NUMERATOR ASSY 1.6MM 6WHEELS	49,556	0
FCC0100095	6AN080 AUTO NUMERATOR ASSY 8MM 6WHEELS	97,624	0
FCC0100096	7AN020 AUTO NUMERATOR ASSY 2MM 7WHEELS	54,536	0
FCC0100097	7AN030 AUTO NUMERATOR ASSY 3MM 7WHEELS	50,768	0
FCC0100098	7AN040 AUTO NUMERATOR ASSY 4MM 7WHEELS	61,645	0
FCC0100099	7AN050 AUTO NUMERATOR ASSY 5MM 7WHEELS	78,279	0
FCC0100100	7AN062 AUTO NUMERATOR ASSY 1.6MM 7WHEELS	45,391	0
FCC0100101	7AN100 AUTO NUMERATOR ASSY 10MM 7WHEELS	129,583	0
FCC0100102	8AN020 AUTO NUMERATOR ASSY 2MM 8WHEELS	57,329	0
FCC0100103	8AN030 AUTO NUMERATOR ASSY 3MM 8WHEELS	59,388	0
FCC0100104	8AN040 AUTO NUMERATOR ASSY 4MM 8WHEELS	76,737	0
FCC0100105	8AN050 AUTO NUMERATOR ASSY 5MM 8WHEELS	88,814	0
FCC0100106	ACTUATING LEVER (3 MM) ARN	3,936	0
FCC0100107	96085 ACTUATING LEVER (3 MM) ARN	3,895	0
FCC0100109	96012 SPRING FOR ACT. PAWL (1.6,2,3 MM)	204	0

Conventional Marking Systems

ALL RATES ARE IN RUPEES PER PIECE (Excl. of GST)

SAP Code	Description	List Price ₹	MOQ
FCC0100110	95268 ACTUATING ROD ASSY.	4,247	0
FCC0100112	95269 ACTUATING ROD	101	0
FCC0100114	ACTUATING PAWL (8 MM) AR N	17,234	0
FCC0100117	95155 PAWL SPRING	84	0
FCC0100118	98038 COLLET	968	0
FCC0100119	ACTUATING PAWL 96058	8,846	0
FCC0100120	DIGIT HOLDING CATCH 96059	1,566	0
FCC0100121	96076 ALPHA WHEEL 2MM K TO T	5,958	0
FCC0100122	96075 ALPHA WHEEL 2MM A TO J	5,971	0
FCC0100123	96826 TENS WHEEL 6MM 0 TO 9	11,069	0
FCC0100124	98031 RETURN SPRING	541	0
FCC0100125	96054 DIGIT WHEEL 1.6MM 0 TO 9	5,423	0
FCC0100126	96055 TENS WHEEL 1.6MM 0 TO 9	5,423	0
FCC0100127	96825 DIGIT WHEEL 6MM 0 TO 9	11,069	0
FCC0100129	95125 PAWL HOLDER	2,214	0
FCC0100131	96709 TENS WHEEL 5MM 0 TO 9	10,102	0
FCC0100133	95156 PAWL HOLDER SPRING	235	0
FCC0100134	95155 PAWL SPRING	84	0
FCC0100135	96615 DIGIT WHEEL 4MM 0 TO 9	7,480	0
FCC0100136	96649 ALPHA WHEEL 4MM A TO J	7,480	0
FCC0100137	ALPHA WHEEL 4MM K TO T	7,480	0
FCC0100138	96035 TENS WHEEL 2MM 0 TO 9	5,958	0
FCC0100139	96072 ALPHA WHEEL 1.6MM K TO T	5,448	0
FCC0100140	96071 ALPHA WHEEL 1.6MM A TO J	5,448	0
FCC0100141	96077 ALPHA WHEEL 2MM U TO Z	5,971	0
FCC0100142	96079 ALPHA WHEEL 3MM A TO J	6,372	0
FCC0100143	96005 TENS WHEEL 3MM 0 TO 9	6,372	0

ALL RATES ARE IN RUPEES PER PIECE (Excl. of GST)

SAP Code	Description	List Price ₹	MOQ
FCC0100144	96034 DIGIT WHEEL 2 MM 0-9	5,958	0
FCC0100145	9AN020 AUTO NUMERATOR ASSY 2MM 9WHEELS	97,006	0
FCC0100146	96073 ALPHA WHEEL 1.6MM U TO Z	5,448	0
FCC0100147	95280 DIAL WHEEL 3MM	14,652	0
FCC0100148	96790 ALPHA WHEEL 5MM K TO T	11,133	0
FCC0100149	96789 ALPHA WHEEL 5MM A TO J	10,102	0
FCC0100150	9AN030 AUTO NUMERATOR ASSY 3MM 9WHEELS	62,662	0
FCC0100153	9AN050 AUTO NUMERATOR ASSY 5MM 9WHEELS	95,892	0
FCC0100155	96919 DIGIT WHEEL 8MM 0 TO 9	14,857	0
FCC0100157	96920 TENS WHEEL 8MM 0 TO 9	14,857	0
FCC0100158	96866 SPRING BAR ASSY 3MM 6 WHEEL	1,750	0
FCC0100160	96004 DIGIT WHEEL 3MM 0 TO 9	6,372	0
FCC0100175	MAIN SPINDLE (2/3 MM RTN)	812	0
FCC0100181	RTN BODY HAND 2/3MM	7,002	0
FCC0100186	RETAINING SCREW (M6) RTN	304	0
FCC0100188	96918 TENS HOLDER CATCH 8MM	2,553	0
FCC0100190	96643 SPRING PIN (4,5,6,8,10MM)	229	0
FCC0100192	96916 SPRING WIRE SHORT (2.61 X 1.04)	268	0
FCC0100195	96915 SPRING WIRE LONG (2.61 X 1.04)	268	0
FCC0100303	9RTN3 RTN ASSY SPL . HAND 9WHEELS 3MM	48,437	0
FCC0100313	7661 PAWL HOLDER ASSY.	3,056	0
FCC0100314	RTN ASSY SPL. HAND 6RTN5	43,968	0
FCC0100321	8RTN3 RTN ASSY SPL . HAND 8WHEELS 3MM	34,048	0
FCC0100333	8RTN2M RTN ASSY SPL . M/C . 8WHEELS 2MM	29,973	0
FCC0100339	6RTN5 RTN ASSY HAND SPL. 95003	43,968	0
FCC0100349	ALPHA WHEEL 4MM U TO Z 96651	7,480	0
FCC0100351	96088 CENTRE SHAFT 3MM 9 WHEELS	943	0

Conventional Marking Systems

ALL RATES ARE IN RUPEES PER PIECE (Excl. of GST)

SAP Code	Description	List Price ₹	MOQ
FCC0100352	96081 ALPHA WHEEL 3MM U TO Z	6,372	0
FCC0100353	97161 SPACER WHEEL 3MM	481	0
FCC0100354	100132 ALPHA WHEEL 6MM A TO J	9,847	0
FCC0100393	96062 PIN FOR ACTUATING PAWL(1.6 MM)ARN	204	0
FCC0100396	96042 PIN FOR ACTUATING PAWL (2 MM) ARN	204	0
FCC0100399	6020 STEEL BALL 1/8	112	0
FCC0100414	96059 DIGIT HOLDING CATCH 1.6MM	1,566	0
FCC0100415	97021 SPRING FOR LEVER RH (6 MM) ARN	204	0
FCC0100416	97022 SPRING FOR LEVER LH (6 MM)ARN	204	0
FCC0100417	96631 MAKE UP WASHER 4, 5, 6 MM ARN	924	0
FCC0100419	CENTRE SHAFT 5MM ARN 96723	943	0
FCC0100422	96708 DIGIT WHEEL 5MM 0 TO 9	10,102	0
FCC0100424	10AN050 AUTO NUMERATOR ASSY 5MM 10 WHLS.	106,795	0
FCC0100425	10AN020 AUTO NUMERATOR ASSY 2MM 10WHEELS	66,040	0
FCC0100427	11AN030 AUTO NUMERATOR ASSY 3MM 11WHEELS	77,637	0
FCC0100430	9AN040 AUTO NUMERATOR ASSY 4MM 9WHEELS	80,898	0
FCC0100431	8AN060 AUTO NUMERATOR ASSY 6MM 8WHEELS	99,259	0
FCC0100438	96015 SPRING BAR ARN (3MM)	4,393	0
FCC0100465	96009--SPRING FOR LEVER RH (1.6,2MM)ARN	185	0
FCC0100512	10AN062 AUTO NUMERATOR ASSY 1/16"10WHL.	90,038	0
FCC0100524	96913 DIGIT HOLDING CATCH (8/1 0 MM) ARN	5,146	0
FCC0100527	96868 SPRING BAR ASSY 4MM ARN	7,630	0
FCC0100567	100823-SPRING BAR ASSY. 4MM ARN	6,847	0
FCC0100628	96869 SPRING BAR ASSY FOR 9-11 WL OF 4MM	6,581	0
FCC0100702	96734 ARN CENTER SHAFT 2MM	1,670	0
FCC0100758	SPLIT PIN	112	0
FCC0100759	CS205 SPRING	207	0

ALL RATES ARE IN RUPEES PER PIECE (Excl. of GST)

SAP Code	Description	List Price ₹	MOQ
FCC0100760	HEX GRUB SCREW	112	0
FCC0100771	96725 HANDLE	892	0
FCE0100001	LM40/3 METAL LABEL MARKER 3MM	72,684	1
FCE0100002	LM40/2 METAL LABEL MARKER 2MM	72,692	1
FCE0100003	LM40/1.6 METAL LABEL MARKER 1.6MM	72,692	1
FCE0100004	95148 SPRING FOR RETURN DRIVE	353	2
FCE0100005	CS196 COMPRESSION SPRING	64	0
FCE0100006	95135 DEPTH ADJUSTER	1,121	2
FCE0100007	95123 ADJUSTING THUMB SCREW	549	2
FCE0100011	95240 POINTER 1.6 MM	445	0
FCE0100015	95295 SPECIAL SCREW	177	2
FCE0100016	95116 CLAMPING NUT	269	2
FCE0100017	95179 RATCHET AND PINION ASSY. 3MM PITCH	2,352	2
FCE0100019	95278 DIAL WHEEL ASSY. 2 MM	24,473	2
FCE0100020	95136 SPRING RETURN STOP	256	2
FCE0100024	95130 SPRING PLATE	585	0
FCE0100025	CS162 SPRING	229	0
FCE0100026	95128 LINK	281	2
FCE0100027	95138 INDEXING TOOTH	999	2
FCE0100028	95132 PIVOT PIN	178	0
FCE0100030	95232 O RING	319	0
FCE0100031	SHOULDER SCREW 95141	691	2
FCE0100032	95265 LABEL CLIP ASSY.	7,797	2
FCE0100034	2592 CIRCLIP 4 MM DIA	70	0
FCE0100036	95157 SPRING TORSION L.H.	288	2
FCE0100037	95158 SPRING TORSION R.H.	288	2
FCE0100038	95231 COVER	331	0

Conventional Marking Systems

ALL RATES ARE IN RUPEES PER PIECE (Excl. of GST)

SAP Code	Description	List Price ₹	MOQ
FCE0100039	95194 OUTER HOUSING	314	2
FCE0100043	95196 SPRING	231	2
FCE0100044	STEEL BALL 4 MM 95195	218	2
FCE0100045	95137 PINION	1,770	2
FCE0100047	95270 COLLAR	395	0
FCE0100048	95159 MAIN FRAME CASTING	18,300	0
FCE0100049	95152 TABLE GUIDE	6,875	0
FCE0100051	95139 RACK	2,870	0
FCE0100052	95146 TABLE	3,055	0
FCE0100056	95161 WEDGE PLATE R.H	1,268	0
FCE0100057	95094 PIVOT PIN	235	0
FCE0100058	95287 SPRING COMPRESSION	241	0
FCE0100059	95274 CLIP PIN	560	0
FCE0100060	95117 TABLE STOP	515	0
FCE0100061	95119 CLAMPING SCREW	235	0
FCE0100062	95134 GUIDE STRIP LARGE	178	0
FCE0100063	95133 GUIDE STRIP SMALL 95133	223	0
FCE0100064	95129 GUIDE BAR	1,299	0
FCE0100066	POINTER (3 MM)	220	0
FCE0100067	SCREW (KEY)98007	462	0
FCE0100069	95177 RATCHET & PINION ASSY.-PITCH 2MM	1,579	0
FCE0100070	95275 WING NUT ASSY.	476	0
FCE0100072	95139-RACK - (L.M.40 M/C)	2,955	0
FCE0100073	95117-TABLE STOP (L.M.40 M/C)	515	0
FCE0100074	95119-CLAMPING SCREW (L.M.40 M/C)	235	0
FCE0100075	95147-SPINDLE FOR RATCHET (L.M.40 M/C)	133	0

ALL RATES ARE IN RUPEES PER PIECE (Excl. of GST)

SAP Code	Description	List Price ₹	MOQ
FCE0100076	95146-TABLE FOR LM40 M/C	3,055	0
FCE0100077	95092 - MAIN SPINDLE - LM40	7,505	0
FCE0100078	95178 RATCHET & PINION ASSY-PITCH 1.6MM	1,579	0
FCE0100079	95097 HANDLE ARM LM40	594	0
FCE0100082	95273 CLIP TOP	459	0
FCE0100083	STEEL BALL 4 MM DIA (95195)	216	0
FCE0100084	PAWL HOLDER ASSEMBLY LM/40	2,779	0
FCE0100086	95194 OUTER HOUSING	313	0
FCE0100087	SPRING (95196) FOR LM40	229	0
FCE0100088	95193 POINTER FOR LM40	220	0
FCE0100089	95167 BANK OF POINTER FOR LM40	220	0
FCF0100001	RH10 - ROLL MARKING MACHINE	58,528	1
FCF0100002	RH15 ROLL MARKING MACHINE	58,180	1
FCF0100017	RC2 CRADLE ASSY . (90115)	13,151	1
FCF0100018	6380 STUD ARBOUR ASSY	17,382	1
FCF0100021	RC1 CRADLE ASSY . (90114)	12,345	1
FCF0100030	RC3 CRADLE ASSY . (6806)	18,671	1
FCF0100043	6303 MAIN BODY RH10	7,625	2
FCG0100001	IP28H IMPACT PRESS ASSY. HAND	69,267	1
FCG0100002	98034D IMPACT SPRING	589	1
FCG0100003	98035 IMPACT ADJUST. NUT	2,069	1
FCG0100004	98032 IMPACT SPRING HOUSING	3,759	1
FCG0100005	IMPACT PRESS ASSY PNEUMATIC IP28PN	77,448	1
FCG0100008	98084 O-RING 85.1x5.33	172	0
FCG0100009	98083 O-RING 20.22x3.53	105	0
FCG0100011	95264/A ADAPTOR FOR IP28 10D X 59L	772	1

Conventional Marking Systems

ALL RATES ARE IN RUPEES PER PIECE (Excl. of GST)

SAP Code	Description	List Price ₹	MOQ
FCG0100014	PORTABEL PNEUMAT IMPACT PRESS IPP7 W/HOL	46,835	0
FCG0100015	98081 CYLINDER SHELL	2,238	1
FCG0100016	98008 PINION SHAFT	3,123	1
FCG0100017	98011 SPRING HOUSING	944	0
FCG0100018	98059 ADAPTOR FOR IMPACT	2,362	0
FCG0100019	98015 SUPPORT RING	1,736	0
FCG0100020	98033 HAMMER	4,182	1
FCG0100021	98027 TRIGGER SPRING	512	1
FCG0100022	98036 COLLET HOLDER	1,604	1
FCG0100023	98038 COLLET	974	1
FCG0100024	98039 NUT FOR COLLET	666	1
FCG0100025	98040 LOCK NUT	353	1
FCG0100026	98041 LOCK NUT	353	1
FCG0100027	98028 TRIGGER BUSH	1,710	1
FCG0100028	98029 GUIDE TUBE	1,710	1
FCG0100029	98037 CUSHION NUT	991	1
FCG0100030	98042 RUBBER RING	161	1
FCG0100031	98043 DAMPING NUT	494	1
FCG0100032	98044 KEY	475	1
FCG0100033	98068 HOLLOW PIN	105	0
FCG0100034	98030 STEEL BALL DIA.6mm	185	0
FCG0100035	98026 TRIGGER HOUSING	3,736	0
FCG0100036	98045 HEX NUT	968	1
FCG0100038	98049 FOOT VALVE 2.8T 98049	3,736	0
FCG0100040	98048 PNEUMATIC CYLINDER ASSY	8,829	0
FCG0100041	98013 LOCKING SCREW	540	0

ALL RATES ARE IN RUPEES PER PIECE (Excl. of GST)

SAP Code	Description	List Price ₹	MOQ
FCG0100042	98024 KNOB	750	0
FCG0100043	98025 PRESSURE SPRING	160	0
FCG0100044	98067 STEEL BALL DIA. 3.5 MM	61	0
FCG0100045	98010 TORSION SPRING	133	1
FCG0100046	98051 NOZZLE	255	0
FCG0100048	98017 SINTERED BUSH FOR IP28	1,038	0
FCG0100049	98047 HANDLE FOR IMPACT PRESS	484	0
FCG0100050	98019 COLLAR FOR IMPACT PRESS	263	1
FCG0100051	FOOT VALVE ASSY IP28	5,338	0
FCG0100052	98034A IMPACT SPRING	115	1
FCG0100053	98034B IMPACT SPRING	114	0
FCG0100054	98034C IMPACT SPRING	114	0
FCG0100057	98078 UPPER FLANGE IP28PN	1,201	1
FCG0100058	98079 LOWER FLANGE IP28PN	1,309	0
FCH0100001	250M1000 MACHINE HOLDER ASSY. (1954)	4,265	5
FCH0100002	125M1000 MACHINE HOLDER ASSY (1961)	4,137	5
FCH0100003	250H1000 HAND HOLDER ASSY. (2308)	2,843	5
FCH0100004	250H1250 HAND HOLDER ASSY (2309)	2,530	5
FCH0100005	312H1250 HAND HOLDER ASSY (2310)	3,048	5
FCH0100006	375H1500 HAND HOLDER ASSY. (2311)	2,801	5
FCH0100007	8M20 MACHINE HOLDER ASSY. (6249)	4,265	5
FCH0100008	8M40 MACHINE HOLDER ASSY. (6253)	4,341	5
FCH0100010	8M60 MACHINE HOLDER ASSY. (6257)	5,584	5
FCH0100012	125H750 HAND HOLDER ASSY. (90348)	5,517	5
FCH0100013	250M2000 MACHINE HOLDER ASSY. 1955	4,239	5
FCH0100014	250M3000 MACHINE HOLDER ASSY. 1956	5,545	5

Conventional Marking Systems

ALL RATES ARE IN RUPEES PER PIECE (Excl. of GST)

SAP Code	Description	List Price ₹	MOQ
FCH0100015	312M2000 MACHINE HOLDER ASSY. 1957	4,055	5
FCH0100016	375M2000 MACHINE HOLDER ASSY. (1959)	4,195	5
FCH0100017	2258- MACHINE HOLDER ASSY. (250M2L1000)	1,425	5
FCH0100018	8H25 HAND HOLDER ASSY. (6272)	2,804	5
FCH0100019	8M80 MACHINE HOLDER ASSY. (90243)	5,751	5
FCH0100022	125M2000 MACHINE HOLDER ASSY (1952)	2,030	5
FCH0100024	14H60 HAND HOLDER ASSY. (90457)	6,733	5
FCH0100031	8H20 HAND HOLDER ASSY. (6270)	2,716	5
FCH0100035	90108--- 125R101000 M/C HOLD. (R.M.M/C.)	3,779	5
FCH0100074	8R1020 MACHINE HOLDER (R.M.M/C.) 90317	2,424	5
FCH0100075	8R1060 MACHINE HOLDER (R.M.M/C.) 90321	3,185	5
FCH0100076	90110--- 250R102L1000M/C HO (R.M.M/C.)	2,799	5
FCH0100077	90112---- 250R101000 M/C HOLD R.M.M/C	2,569	5
FCH0100078	90111--- 250R102L2000 M/C HOLD R.M.M/C	2,592	5
FCH0100079	8H15 SPL.HAND HOLDER ASSY. (100329)	2,414	5
FCH0100080	8R1040 MACHINE HOLDER (R.M.M/C.) 90319	2,761	5
FCH0100081	90113---250R102000 M/C HOLD R.M.M/C	3,747	5
FCH0100086	8H40G HAND HOLDER ASSY FOR GROOVED TYPE	3,537	5
FCH0100090	90109--125R102000 M/C HOLDER R.M.M/C.	4,607	0
FCH0100091	100620 SPL.M/C HOLDER ASSY.FOR IPP7-8X13	7,038	0
FCH0100092	100763SPL2 LINE M/C HOLDR RMMC	6,790	0
FCH0100103	SPL RMMC HOLDER TO HOLD T093 101X25X81	12,860	0
FCH0100104	625H1500 HAND HOLDER ASSY.	3,803	0
FCH0100105	SPL RMMC HOLDER FOR 2 LINES/4MM RH15	14,792	0
FCH0100106	SPL RMMC HOLDER TO HOLD SM30870	2,481	0
FCH0100107	102071 SPL HOLDER TO HOLD 10CHR OF T060	4,434	0

ALL RATES ARE IN RUPEES PER PIECE (Excl. of GST)

SAP Code	Description	List Price ₹	MOQ
FCH0100108	102117 14M170 HOLDER TO HOLD 17CHR-T100	5,765	0
FCH0100109	102085 2 LINE HOLDER-T030 5 CHR PER LINE	4,839	0
FCH0100111	102143 2-LINE HOLDER TO HOLD T050 10 IST	17,100	5
FCM0100005	RP30-PNEUMATIC ROLL MARKING M/C	100,000	1



Bradma®

Automating The Future

HEAD OFFICE

Forbes & Company Limited

Forbes Building, Charanjit Rai Marg, Fort, Mumbai 400 001 | **Telephone:** +91 (0) 22 61358958 | **Email:** sales@forbes.co.in

DIVISIONAL SALES OFFICES ADDRESS / PH. NO.

AHMEDABAD

1st Floor, Pranvijay Building,
Opp. Bata Showroom, Near Times Of India,
Ashram Road, Ahmedabad - 380009
Telephone: +91 (0) 79 26587769, 079-26580741
Fax: 079-26584618

BENGALURU

Classic Building, 3rd Floor, 24 Richmond Road
Bengaluru - 560025
Telephone: +91 (0) 80 43230129
Fax: +91 (0) 80 43230110

CHENNAI

Catholic Centre, 1st Floor,
108, Armenian Street,
Chennai - 600001
Telephone: +91 (0) 44 25389890/95,
Fax: +91 (0) 44 25360872

NEW DELHI

8F, 8th Floor, Vandana Building,
Tolstoy Marg, New Delhi -110001
Telephone: +91 (0) 11 43000120/107

KOLKATA

222, Circular Mansion, 1st Floor,
A.J.C. Bose Road,
Kolkata-700 017
Mobile: +91 (0) 70 91193999

MUMBAI

Forbes Building, Charanjit Rai Marg,
Fort, Mumbai 400 001
Telephone: +91 (0) 22 69402500

PUNE

H.No.1195/5, Bhosale Heights, 4th Floor,
Opp. Deendayal Hospital, Fergusson College Road,
Pune 411005
Telephone: +91 (0) 20 48509111

CHHATRAPATI SAMBHAJINAGAR

B 13, Waluj MIDC,
Chhatrapati Sambhajanagar - 431133
Telephone: +91 (0) 240 2553422

www.bradma-forbes.com