

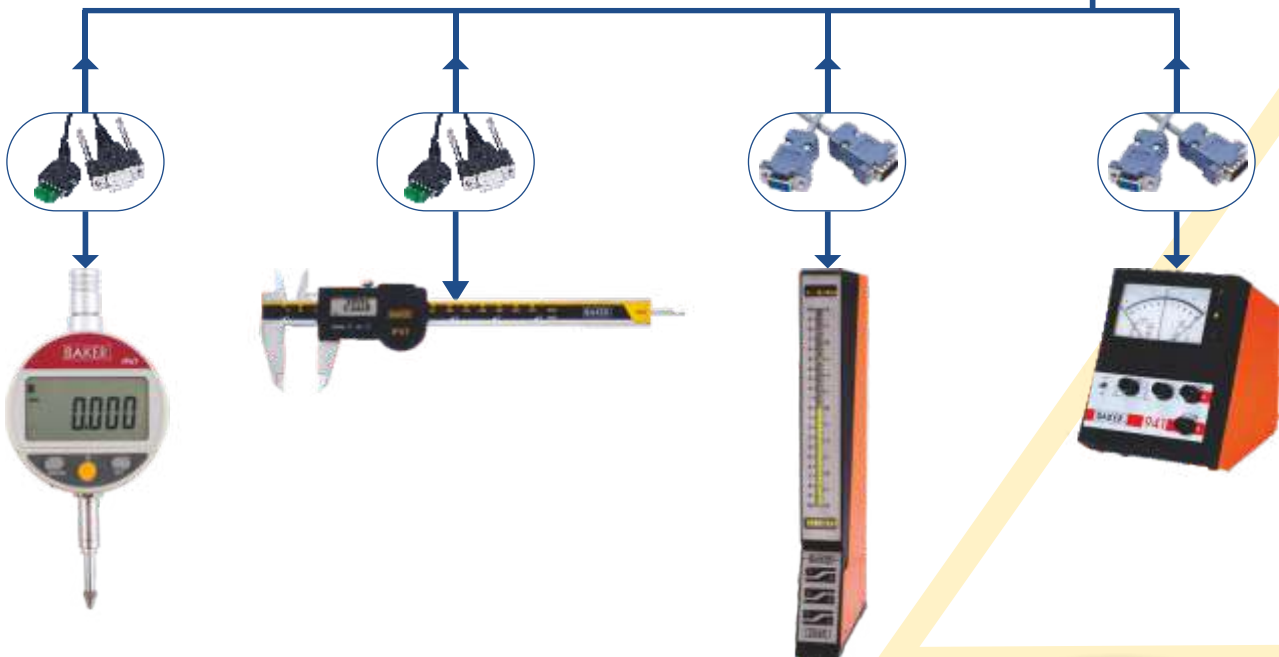
**DATA ACQUISITION
& SPC SOFTWARE**



The world today is moving toward Statistical process control techniques at a lightning pace. It is likely that in the near future, the use of statistical process control is mandated in the automobile industry. In order to keep its customers at par with international requirements, Baker Gauges has developed Q-Soft a simple yet effective data acquisition and SPC software, which can be easily installed by anyone, ranging from a small workshop to a big organization. It is as simple as plug and play.



BAKER Q-Soft



REQUIREMENTS

- Baker digital instruments capable of data output
- Connecting cables
- Multiplexer (optional)
- PC (Minimum Configuration Win XP and Above)
- Q Soft Software





REAL TIME PROCESS CONTROL

Date	Time	Parameter	Machine No.	Operator	Part Name	Count	Reading
10/16/2013	6:32:08 PM	od1	1	VICKY	1	19	< -1.8 um
10/16/2013	11:50:00	od2	1	VICKY	1	22	< -1.7 um
10/16/2013	11:50:01	od3	1	VICKY	1	18	< -1.75 um
10/16/2013	11:50:02	od4	1	VICKY	1	19	< -1.5 um
10/16/2013	11:50:03	od5	1	VICKY	1	24	< -1.4 um
10/16/2013	11:50:02	od6	1	VICKY	1	20	< -1.75 um
10/16/2013	12:03:33	od7	1	VICKY	1	1	> 1.8 um
10/16/2013	12:05:30	od8	1	VICKY	1	7	> 1.8 um

Part Number: [] Part Name: [] Back Color: [] Fore Color: []
 Parameter: [] Channel: []
 UTL Value: [] UTL Name: [] UTL+Reading > UTL
 LTL Value: [] LTL Name: [] UCL+Reading > UCL
 UTL Value: [] UTL Name: [] UCL+Reading >+ UCL
 LTL Value: [] LTL Name: [] UCL+Reading >+ UCL
 UTL Value: [] UTL Name: [] Reading < LTL
 LTL Value: [] LTL Name: [] Reading < LTL

Buttons: Add, Save, Modify, Delete, Close

Online information includes - Date, time, part name, parameter, machine, measurement values and count of individual measurements.

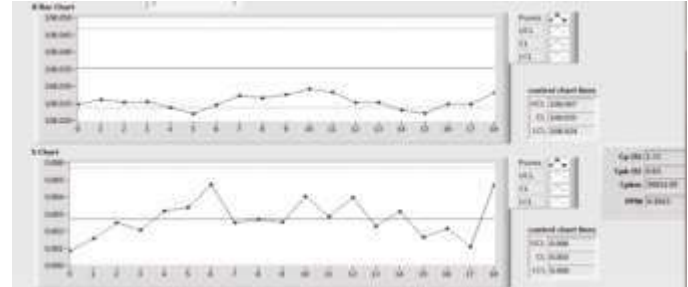
Various representations of data, displayed on one screen with tabs for navigation.

STATISTICAL INFORMATION INCLUDES

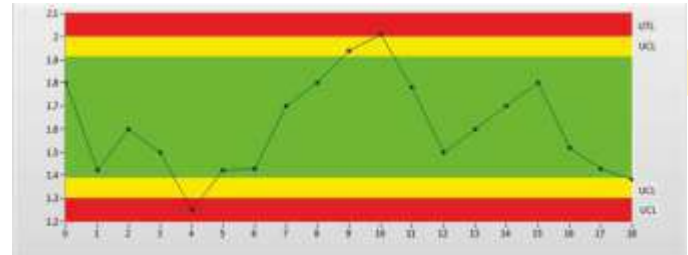
CP, CPK, CPM, PPM

Part No.	Parameter	Part Name	Cp	Cpk	Cpm	PPM
1	od1	1	0.377624	0.334886	0.700000	14272
1	od2	1	0.499088	0.596427	0.722288	30309.1
1	od3	1	0.493114	0.622382	0.248833	10978.3
1	od4	1	0.886522	0.609982	0.811372	12448.1
1	od5	1	0.76006	0.56204	0.89948	84938.6
1	od6	1	0.885383	0.548587	0.739277	37423.8
1	od7	1	0.885482	0.734278	0.745345	34574.8
1	od8	1	0.853223	0.800482	0.678188	37545.7

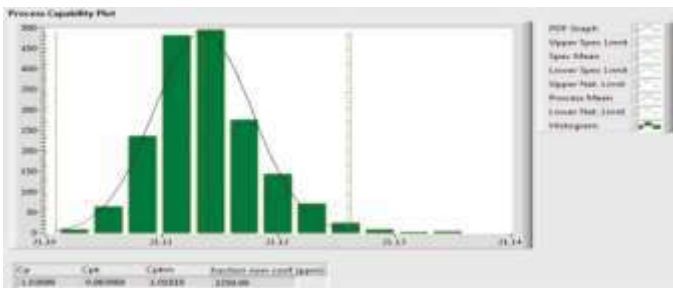
XBAR-R CHART



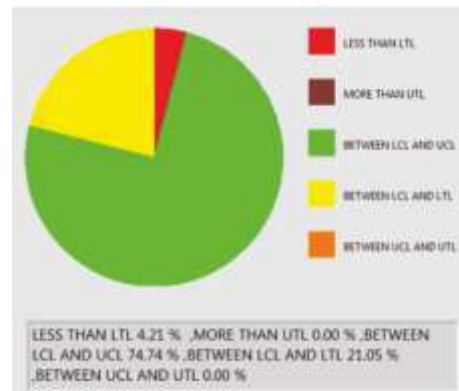
RUN CHART



HISTOGRAM



PIE CHART



REPORT OUTPUT

- Results of statistical data can be offered as :-
 - Xbar-R control chart
 - Xbar control chart
 - Xbar-S control chart
 - Histogram
 - Runchart
- All Statistical charts can be exported to html format and can be also printed.
- During runtime, statistical charts could be further customized.
- Results such as X dbar, Standard Deviation (Rbar/d2), Process capability (Cp, Cpk, Cpm, Ppm) are standard in the report.
- Optional outputs in the form of Pie charts and tabular form also available.
- In the table form, data can be exported to Excel, html format and can also be printed